

Final Reclamation Inspection

December 14, 2017

Operator: CHESAPEAKE OPERATING LLC- 16660

API: 05-123-34591

Weld County, CO

NENW Section 30 T10N R66W

Chris Binschus
Reclamation Specialist, COGCC



COLORADO
Oil & Gas Conservation
Commission

Department of Natural Resources

Inspection Photos

Location Name: ROUSE FARMS 30-10-66 #1H

API: 05-123-34591

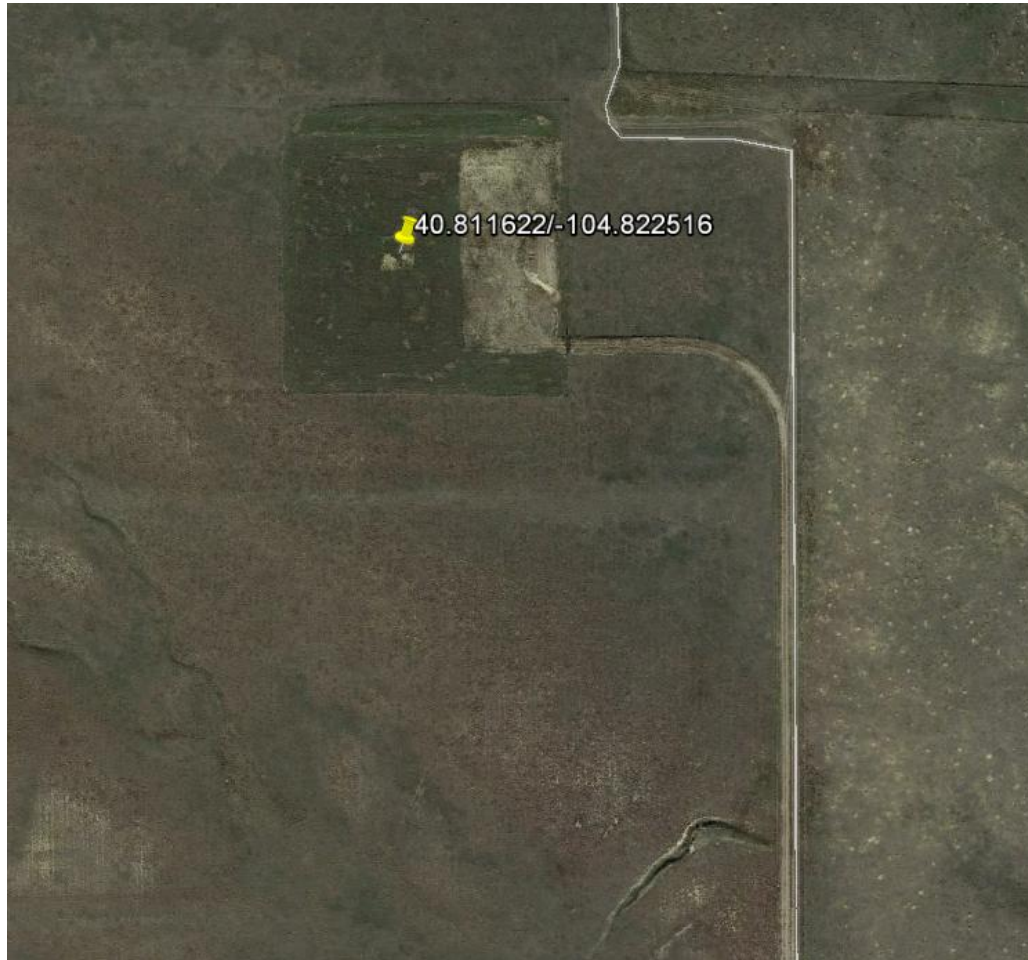


Google Earth imagery taken August 18, 2011. Photo illustrates that no well location and access road were in place before the Operator developed the location.

Inspection Photos

Location Name: ROUSE FARMS 30-10-66 #1H

API: 05-123-34591



Google Earth imagery taken October 14, 2017. Photo illustrates the well pad location and access road. Access road has not been reclaimed. Access was gated and locked, so an inspection of the well location was not performed.