

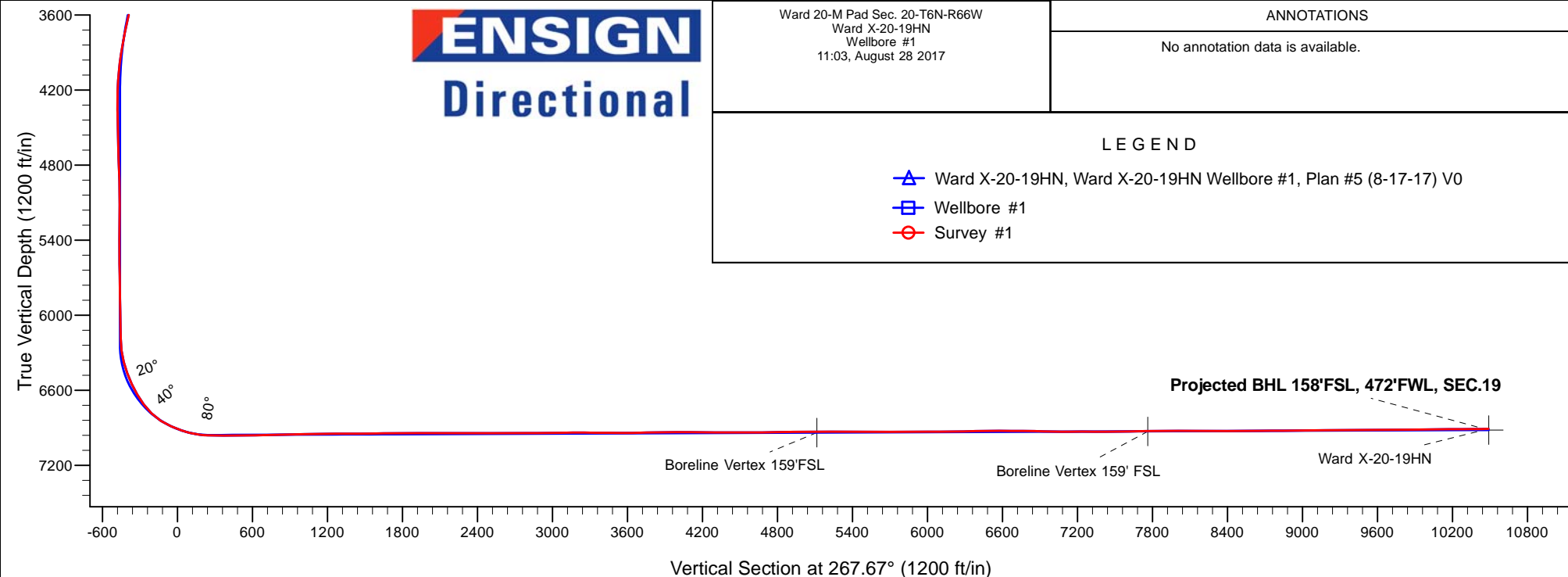
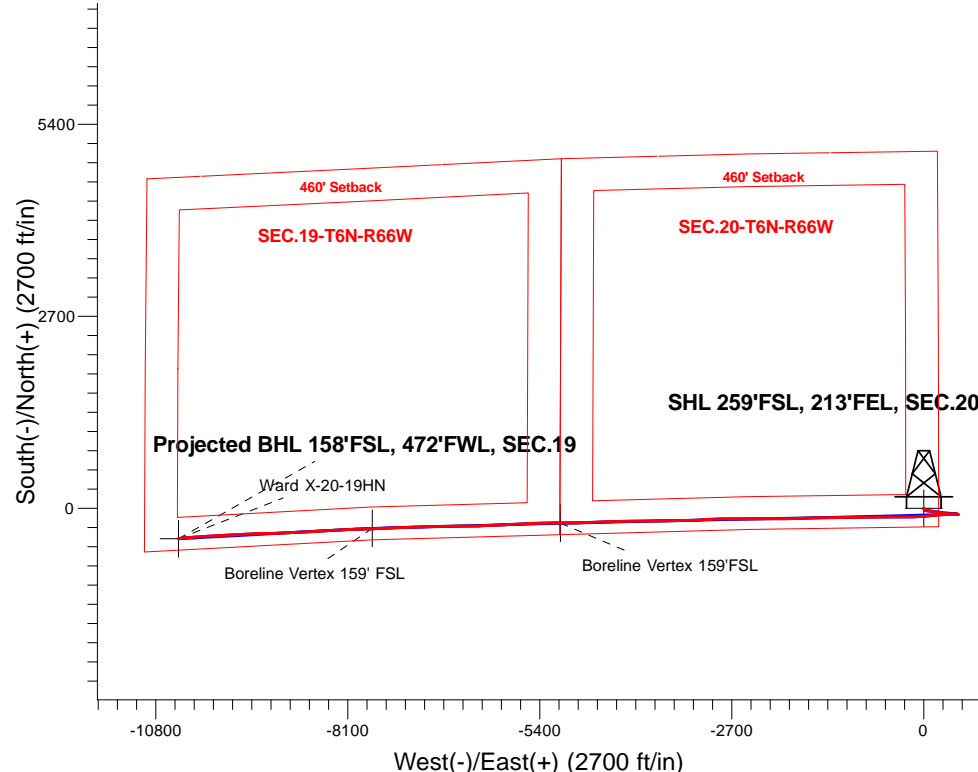
# Bayswater Exploration & Production, LLC

Well Name: **Ward X-20-19HN**

Surface Location: Ward 20-M Pad Sec. 20-T6N-R66W  
North American Datum 1983 , US State Plane 1983, Colorado Northern Zone  
Ground Elevation: 4728.0  
+N/-S+E/-W Northing Easting Latitude Longitude Slot  
0.0 0.0 413791.99196666.41 40.467109 -104.793156  
RKB - 25' WELL @ 4753.0ft (RKB - 25')

## FINAL SURVEY

**Projected Bottom Hole Location**  
**17,645'MD 6909'TVD 425'S & 10480'W of SHL**  
**90.6 degree Incl @ 264.20 degree AZM**





# **Bayswater Exploration & Production, LLC**

**SEC.20-T6N-R66W**

**Ward 20-M Pad Sec. 20-T6N-R66W**

**Ward X-20-19HN**

**Ward X-20-19HN Wellbore #1**

**Survey: Survey #1**

## **Standard Survey Report**

**28 August, 2017**



**BAYSWATER**  
**EXPLORATION & PRODUCTION, LLC**

<b>Company:</b>	Bayswater Exploration & Production, LLC	<b>Local Co-ordinate Reference:</b>	Well Ward X-20-19HN
<b>Project:</b>	SEC.20-T6N-R66W	<b>TVD Reference:</b>	WELL @ 4753.0ft (RKB - 25')
<b>Site:</b>	Ward 20-M Pad Sec. 20-T6N-R66W	<b>MD Reference:</b>	WELL @ 4753.0ft (RKB - 25')
<b>Well:</b>	Ward X-20-19HN	<b>North Reference:</b>	True
<b>Wellbore:</b>	Ward X-20-19HN Wellbore #1	<b>Survey Calculation Method:</b>	Minimum Curvature
<b>Design:</b>	Wellbore #1	<b>Database:</b>	US_EDM

<b>Project</b>	SEC.20-T6N-R66W, Weld County, Colorado		
<b>Map System:</b>	US State Plane 1983	<b>System Datum:</b>	Mean Sea Level
<b>Geo Datum:</b>	North American Datum 1983		Using Well Reference Point
<b>Map Zone:</b>	Colorado Northern Zone		Using geodetic scale factor

Site		Ward 20-M Pad Sec. 20-T6N-R66W						
Site Position:		Northing:	1,413,957.04	usft	Latitude:	40.467562		
From:	Lat/Long	Easting:	3,196,665.10	usft	Longitude:	-104.793156		
Position Uncertainty:	0.0	ft	Slot Radius:	13-3/16	"	Grid Convergence:	0.46	°

Well	Ward X-20-19HN					
Well Position	+N/-S	0.0 ft	Northing:	1,413,791.99 usft	Latitude:	40.467109
	+E/-W	0.0 ft	Easting:	3,196,666.42 usft	Longitude:	-104.793156
Position Uncertainty		0.0 ft	Wellhead Elevation:	0.0 ft	Ground Level:	4,728.0 ft

<b>Wellbore</b>	Ward X-20-19HN Wellbore #1				
<b>Magnetics</b>	<b>Model Name</b>	<b>Sample Date</b>	<b>Declination (°)</b>	<b>Dip Angle (°)</b>	<b>Field Strength (nT)</b>
	IGRF2010	8/17/2017	8.05	66.88	52,514

<b>Design</b>	Wellbore #1				
<b>Audit Notes:</b>					
<b>Version:</b>	1.0	<b>Phase:</b>	ACTUAL	<b>Tie On Depth:</b>	0.0
<b>Vertical Section:</b>	<b>Depth From (TVD) (ft)</b>	<b>+N/-S (ft)</b>	<b>+E/-W (ft)</b>	<b>Direction (°)</b>	
	0.0	0.0	0.0	267.67	

<b>Survey Program</b>	<b>Date</b>	8/28/2017			
<b>From (ft)</b>	<b>To (ft)</b>	<b>Survey (Wellbore)</b>	<b>Tool Name</b>	<b>Description</b>	
241.0	17,645.0	Survey #1 (Ward X-20-19HN Wellbore #1)	MWD	MWD - Standard	

<b>Survey</b>										
<b>Measured Depth (ft)</b>	<b>Inclination (°)</b>	<b>Azimuth (°)</b>	<b>Vertical Depth (ft)</b>	<b>+N/-S (ft)</b>	<b>+E/-W (ft)</b>	<b>Vertical Section (ft)</b>	<b>Dogleg Rate (°/100usft)</b>	<b>Build Rate (°/100usft)</b>	<b>Turn Rate (°/100usft)</b>	
0.0	0.00	0.00	0.0	0.0	0.0	0.0	0.00	0.00	0.00	
241.0	0.70	140.30	241.0	-1.1	0.9	-0.9	0.29	0.29	0.00	
336.0	0.70	143.60	336.0	-2.0	1.7	-1.6	0.04	0.00	3.47	
430.0	0.70	137.10	430.0	-2.9	2.4	-2.3	0.08	0.00	-6.91	
525.0	0.80	150.10	525.0	-3.9	3.1	-3.0	0.21	0.11	13.68	
620.0	0.50	155.00	620.0	-4.9	3.6	-3.4	0.32	-0.32	5.16	
715.0	0.70	152.40	715.0	-5.8	4.1	-3.8	0.21	0.21	-2.74	
809.0	0.50	159.60	809.0	-6.7	4.5	-4.2	0.23	-0.21	7.66	
904.0	0.60	142.40	904.0	-7.4	4.9	-4.6	0.20	0.11	-18.11	
999.0	0.60	158.40	998.9	-8.3	5.4	-5.1	0.18	0.00	16.84	

<b>Company:</b>	Bayswater Exploration & Production, LLC	<b>Local Co-ordinate Reference:</b>	Well Ward X-20-19HN
<b>Project:</b>	SEC.20-T6N-R66W	<b>TVD Reference:</b>	WELL @ 4753.0ft (RKB - 25')
<b>Site:</b>	Ward 20-M Pad Sec. 20-T6N-R66W	<b>MD Reference:</b>	WELL @ 4753.0ft (RKB - 25')
<b>Well:</b>	Ward X-20-19HN	<b>North Reference:</b>	True
<b>Wellbore:</b>	Ward X-20-19HN Wellbore #1	<b>Survey Calculation Method:</b>	Minimum Curvature
<b>Design:</b>	Wellbore #1	<b>Database:</b>	US_EDM

Survey									
Measured Depth (ft)	Inclination (°)	Azimuth (°)	Vertical Depth (ft)	+N/-S (ft)	+E/-W (ft)	Vertical Section (ft)	Dogleg Rate (°/100usft)	Build Rate (°/100usft)	Turn Rate (°/100usft)
1,094.0	0.80	170.20	1,093.9	-9.4	5.7	-5.3	0.26	0.21	12.42
1,189.0	0.90	174.40	1,188.9	-10.8	5.9	-5.4	0.12	0.11	4.42
1,283.0	1.10	165.10	1,282.9	-12.4	6.2	-5.7	0.27	0.21	-9.89
1,378.0	1.10	163.30	1,377.9	-14.2	6.7	-6.1	0.04	0.00	-1.89
1,473.0	1.50	168.20	1,472.9	-16.3	7.2	-6.5	0.44	0.42	5.16
1,495.0	1.10	164.30	1,494.9	-16.8	7.3	-6.6	1.86	-1.82	-17.73
1,572.0	1.30	165.00	1,571.8	-18.3	7.7	-7.0	0.26	0.26	0.91
1,667.0	0.80	157.80	1,666.8	-20.0	8.3	-7.5	0.54	-0.53	-7.58
1,762.0	2.70	123.50	1,761.8	-21.8	10.4	-9.5	2.20	2.00	-36.11
1,856.0	3.60	115.10	1,855.6	-24.3	14.9	-13.9	1.07	0.96	-8.94
1,952.0	5.00	112.50	1,951.4	-27.2	21.5	-20.4	1.47	1.46	-2.71
2,045.0	6.90	103.30	2,043.9	-30.0	30.7	-29.4	2.28	2.04	-9.89
2,140.0	7.80	101.20	2,138.1	-32.6	42.6	-41.2	0.99	0.95	-2.21
2,234.0	8.50	96.50	2,231.1	-34.6	55.7	-54.3	1.03	0.74	-5.00
2,329.0	9.80	92.10	2,324.9	-35.7	70.8	-69.3	1.55	1.37	-4.63
2,424.0	11.10	98.40	2,418.4	-37.3	87.9	-86.3	1.82	1.37	6.63
2,519.0	12.60	98.20	2,511.3	-40.1	107.2	-105.5	1.58	1.58	-0.21
2,614.0	13.90	100.50	2,603.8	-43.7	128.7	-126.8	1.48	1.37	2.42
2,708.0	16.20	100.30	2,694.6	-48.1	152.7	-150.6	2.45	2.45	-0.21
2,803.0	15.70	98.40	2,785.9	-52.3	178.5	-176.2	0.76	-0.53	-2.00
2,899.0	14.50	97.90	2,878.6	-55.9	203.2	-200.8	1.26	-1.25	-0.52
2,993.0	16.80	100.30	2,969.1	-59.9	228.2	-225.6	2.54	2.45	2.55
3,088.0	15.80	99.60	3,060.3	-64.5	254.5	-251.7	1.07	-1.05	-0.74
3,183.0	15.80	98.20	3,151.7	-68.5	280.0	-277.0	0.40	0.00	-1.47
3,277.0	14.50	95.90	3,242.4	-71.6	304.4	-301.3	1.52	-1.38	-2.45
3,372.0	15.60	98.80	3,334.2	-74.8	328.9	-325.6	1.40	1.16	3.05
3,467.0	14.20	97.00	3,426.0	-78.1	353.1	-349.6	1.55	-1.47	-1.89
3,561.0	13.00	94.40	3,517.3	-80.3	375.0	-371.5	1.43	-1.28	-2.77
3,656.0	12.30	92.20	3,610.0	-81.6	395.8	-392.2	0.89	-0.74	-2.32
3,751.0	12.20	90.70	3,702.9	-82.1	416.0	-412.3	0.35	-0.11	-1.58
3,846.0	10.60	87.30	3,796.0	-81.8	434.7	-431.1	1.83	-1.68	-3.58
3,941.0	9.10	92.40	3,889.6	-81.7	451.0	-447.3	1.83	-1.58	5.37
4,036.0	7.00	96.10	3,983.6	-82.6	464.2	-460.5	2.28	-2.21	3.89
4,130.0	5.10	102.80	4,077.1	-84.1	474.0	-470.2	2.15	-2.02	7.13
4,224.0	3.20	90.00	4,170.9	-85.1	480.7	-476.8	2.24	-2.02	-13.62
4,319.0	1.50	156.20	4,265.8	-86.2	483.9	-480.0	3.09	-1.79	69.68
4,413.0	1.40	296.20	4,359.8	-86.8	483.3	-479.4	2.90	-0.11	148.94
4,507.0	1.40	294.90	4,453.8	-85.8	481.2	-477.4	0.03	0.00	-1.38
4,603.0	1.40	295.30	4,549.7	-84.8	479.1	-475.3	0.01	0.00	0.42
4,698.0	1.30	280.50	4,644.7	-84.2	477.0	-473.2	0.38	-0.11	-15.58
4,792.0	1.50	269.10	4,738.7	-84.0	474.7	-470.9	0.36	0.21	-12.13
4,887.0	1.80	265.70	4,833.6	-84.1	472.0	-468.2	0.33	0.32	-3.58
4,981.0	2.00	287.90	4,927.6	-83.7	469.0	-465.2	0.81	0.21	23.62
5,076.0	1.90	281.70	5,022.5	-82.9	465.8	-462.1	0.25	-0.11	-6.53

<b>Company:</b>	Bayswater Exploration & Production, LLC	<b>Local Co-ordinate Reference:</b>	Well Ward X-20-19HN
<b>Project:</b>	SEC.20-T6N-R66W	<b>TVD Reference:</b>	WELL @ 4753.0ft (RKB - 25')
<b>Site:</b>	Ward 20-M Pad Sec. 20-T6N-R66W	<b>MD Reference:</b>	WELL @ 4753.0ft (RKB - 25')
<b>Well:</b>	Ward X-20-19HN	<b>North Reference:</b>	True
<b>Wellbore:</b>	Ward X-20-19HN Wellbore #1	<b>Survey Calculation Method:</b>	Minimum Curvature
<b>Design:</b>	Wellbore #1	<b>Database:</b>	US_EDM

Survey									
Measured Depth (ft)	Inclination (°)	Azimuth (°)	Vertical Depth (ft)	+N/-S (ft)	+E/-W (ft)	Vertical Section (ft)	Dogleg Rate (°/100usft)	Build Rate (°/100usft)	Turn Rate (°/100usft)
5,170.0	0.90	79.40	5,116.5	-82.4	465.0	-461.3	2.93	-1.06	167.77
5,264.0	0.50	76.30	5,210.5	-82.2	466.2	-462.5	0.43	-0.43	-3.30
5,359.0	0.40	68.20	5,305.5	-82.0	466.9	-463.2	0.12	-0.11	-8.53
5,453.0	0.10	345.90	5,399.5	-81.8	467.2	-463.5	0.42	-0.32	-87.55
5,548.0	0.40	255.70	5,494.5	-81.8	466.8	-463.1	0.43	0.32	-94.95
5,643.0	0.60	230.20	5,589.5	-82.2	466.1	-462.4	0.31	0.21	-26.84
5,738.0	0.70	247.10	5,684.5	-82.7	465.2	-461.5	0.23	0.11	17.79
5,832.0	0.80	274.90	5,778.5	-82.9	464.0	-460.3	0.40	0.11	29.57
5,927.0	1.00	289.80	5,873.5	-82.6	462.6	-458.9	0.32	0.21	15.68
6,021.0	1.00	295.80	5,967.5	-81.9	461.1	-457.4	0.11	0.00	6.38
6,146.0	1.10	305.80	6,092.4	-80.7	459.1	-455.5	0.17	0.08	8.00
6,241.0	1.10	296.90	6,187.4	-79.8	457.6	-453.9	0.18	0.00	-9.37
6,336.0	7.40	266.60	6,282.1	-79.7	450.6	-447.0	6.81	6.63	-31.89
6,430.0	14.20	270.80	6,374.4	-79.9	433.0	-429.4	7.28	7.23	4.47
6,524.0	20.20	264.70	6,464.2	-81.3	405.3	-401.7	6.66	6.38	-6.49
6,618.0	25.50	265.70	6,550.8	-84.3	369.0	-365.2	5.65	5.64	1.06
6,713.0	30.10	269.40	6,634.8	-86.1	324.7	-321.0	5.17	4.84	3.89
6,807.0	36.60	269.10	6,713.3	-86.8	273.1	-269.3	6.92	6.91	-0.32
6,902.0	45.60	263.60	6,784.8	-91.0	210.9	-207.0	10.20	9.47	-5.79
6,997.0	57.50	262.90	6,843.8	-99.8	137.1	-133.0	12.54	12.53	-0.74
7,092.0	65.60	266.40	6,889.0	-107.5	54.1	-49.7	9.12	8.53	3.68
7,187.0	71.80	267.00	6,923.5	-112.5	-34.3	38.8	6.55	6.53	0.63
7,281.0	78.60	266.40	6,947.5	-117.8	-124.9	129.6	7.26	7.23	-0.64
7,375.0	86.10	270.70	6,960.0	-120.1	-218.0	222.7	9.18	7.98	4.57
7,470.0	90.70	270.10	6,962.6	-119.4	-312.9	317.5	4.88	4.84	-0.63
7,564.0	89.50	269.60	6,962.5	-119.7	-406.9	411.4	1.38	-1.28	-0.53
7,659.0	91.20	270.00	6,961.9	-120.0	-501.9	506.4	1.84	1.79	0.42
7,754.0	90.50	268.40	6,960.5	-121.3	-596.9	601.3	1.84	-0.74	-1.68
7,850.0	92.00	269.40	6,958.4	-123.2	-692.8	697.3	1.88	1.56	1.04
7,945.0	90.70	269.40	6,956.2	-124.2	-787.8	792.2	1.37	-1.37	0.00
8,040.0	90.10	269.40	6,955.5	-125.2	-882.8	887.2	0.63	-0.63	0.00
8,135.0	92.70	269.60	6,953.2	-126.0	-977.8	982.1	2.74	2.74	0.21
8,230.0	91.40	269.40	6,949.8	-126.8	-1,072.7	1,077.0	1.38	-1.37	-0.21
8,325.0	90.70	268.60	6,948.0	-128.5	-1,167.7	1,171.9	1.12	-0.74	-0.84
8,419.0	90.30	269.60	6,947.2	-130.0	-1,261.6	1,265.9	1.15	-0.43	1.06
8,513.0	89.40	270.30	6,947.5	-130.1	-1,355.6	1,359.8	1.21	-0.96	0.74
8,608.0	90.00	268.40	6,948.0	-131.1	-1,450.6	1,454.8	2.10	0.63	-2.00
8,707.0	91.40	268.00	6,946.8	-134.2	-1,549.6	1,553.7	1.47	1.41	-0.40
8,801.0	90.50	267.30	6,945.2	-138.1	-1,643.5	1,647.7	1.21	-0.96	-0.74
8,896.0	90.70	269.10	6,944.2	-141.1	-1,738.4	1,742.7	1.91	0.21	1.89
8,991.0	90.70	268.90	6,943.0	-142.7	-1,833.4	1,837.7	0.21	0.00	-0.21
9,085.0	89.90	268.60	6,942.5	-144.8	-1,927.4	1,931.7	0.91	-0.85	-0.32
9,180.0	89.30	270.50	6,943.2	-145.5	-2,022.4	2,026.6	2.10	-0.63	2.00

<b>Company:</b>	Bayswater Exploration & Production, LLC	<b>Local Co-ordinate Reference:</b>	Well Ward X-20-19HN
<b>Project:</b>	SEC.20-T6N-R66W	<b>TVD Reference:</b>	WELL @ 4753.0ft (RKB - 25')
<b>Site:</b>	Ward 20-M Pad Sec. 20-T6N-R66W	<b>MD Reference:</b>	WELL @ 4753.0ft (RKB - 25')
<b>Well:</b>	Ward X-20-19HN	<b>North Reference:</b>	True
<b>Wellbore:</b>	Ward X-20-19HN Wellbore #1	<b>Survey Calculation Method:</b>	Minimum Curvature
<b>Design:</b>	Wellbore #1	<b>Database:</b>	US_EDM

Survey									
Measured Depth (ft)	Inclination (°)	Azimuth (°)	Vertical Depth (ft)	+N/-S (ft)	+E/-W (ft)	Vertical Section (ft)	Dogleg Rate (°/100usft)	Build Rate (°/100usft)	Turn Rate (°/100usft)
9,275.0	90.40	270.10	6,943.5	-145.0	-2,117.4	2,121.5	1.23	1.16	-0.42
9,369.0	89.30	269.60	6,943.7	-145.3	-2,211.4	2,215.4	1.29	-1.17	-0.53
9,464.0	90.20	268.20	6,944.1	-147.1	-2,306.3	2,310.4	1.75	0.95	-1.47
9,559.0	90.70	270.70	6,943.4	-148.0	-2,401.3	2,405.4	2.68	0.53	2.63
9,654.0	90.30	270.80	6,942.5	-146.8	-2,496.3	2,500.2	0.43	-0.42	0.11
9,748.0	90.10	270.80	6,942.2	-145.5	-2,590.3	2,594.1	0.21	-0.21	0.00
9,843.0	89.80	270.70	6,942.3	-144.2	-2,685.3	2,688.9	0.33	-0.32	-0.11
9,938.0	89.50	269.30	6,942.9	-144.2	-2,780.3	2,783.8	1.51	-0.32	-1.47
10,033.0	91.00	266.40	6,942.5	-147.8	-2,875.2	2,878.8	3.44	1.58	-3.05
10,127.0	90.80	266.10	6,941.0	-153.9	-2,969.0	2,972.8	0.38	-0.21	-0.32
10,222.0	90.70	267.30	6,939.7	-159.4	-3,063.8	3,067.8	1.27	-0.11	1.26
10,316.0	90.20	266.40	6,939.0	-164.6	-3,157.7	3,161.8	1.10	-0.53	-0.96
10,411.0	89.30	269.60	6,939.4	-167.9	-3,252.6	3,256.7	3.50	-0.95	3.37
10,506.0	90.00	268.90	6,940.0	-169.1	-3,347.6	3,351.7	1.04	0.74	-0.74
10,601.0	89.30	268.70	6,940.6	-171.1	-3,442.6	3,446.7	0.77	-0.74	-0.21
10,696.0	89.30	270.00	6,941.7	-172.2	-3,537.6	3,541.6	1.37	0.00	1.37
10,791.0	91.10	269.30	6,941.4	-172.8	-3,632.6	3,636.6	2.03	1.89	-0.74
10,885.0	91.20	268.70	6,939.5	-174.4	-3,726.5	3,730.5	0.65	0.11	-0.64
10,980.0	91.30	268.00	6,937.5	-177.1	-3,821.5	3,825.5	0.74	0.11	-0.74
11,075.0	90.50	269.60	6,936.0	-179.1	-3,916.4	3,920.5	1.88	-0.84	1.68
11,170.0	90.20	269.80	6,935.4	-179.6	-4,011.4	4,015.4	0.38	-0.32	0.21
11,264.0	89.80	269.80	6,935.4	-180.0	-4,105.4	4,109.3	0.43	-0.43	0.00
11,359.0	89.40	270.00	6,936.0	-180.1	-4,200.4	4,204.3	0.47	-0.42	0.21
11,454.0	89.10	268.20	6,937.3	-181.6	-4,295.4	4,299.2	1.92	-0.32	-1.89
11,549.0	90.50	267.50	6,937.6	-185.2	-4,390.3	4,394.2	1.65	1.47	-0.74
11,643.0	89.80	268.40	6,937.4	-188.5	-4,484.3	4,488.2	1.21	-0.74	0.96
11,739.0	89.10	267.50	6,938.3	-192.0	-4,580.2	4,584.2	1.19	-0.73	-0.94
11,833.0	91.80	267.70	6,937.6	-195.9	-4,674.1	4,678.2	2.88	2.87	0.21
11,928.0	91.50	267.20	6,934.8	-200.1	-4,769.0	4,773.2	0.61	-0.32	-0.53
12,023.0	90.70	269.10	6,933.0	-203.2	-4,863.9	4,868.1	2.17	-0.84	2.00
12,118.0	90.50	269.80	6,932.0	-204.1	-4,958.9	4,963.1	0.77	-0.21	0.74
12,213.0	90.00	270.30	6,931.6	-204.0	-5,053.9	5,058.0	0.74	-0.53	0.53
12,308.0	89.60	270.80	6,931.9	-203.1	-5,148.9	5,152.9	0.67	-0.42	0.53
12,402.0	89.10	268.40	6,933.0	-203.8	-5,242.9	5,246.8	2.61	-0.53	-2.55
12,497.0	90.50	268.00	6,933.3	-206.8	-5,337.8	5,341.8	1.53	1.47	-0.42
12,592.0	90.20	268.70	6,932.7	-209.5	-5,432.8	5,436.8	0.80	-0.32	0.74
12,686.0	89.70	267.30	6,932.8	-212.8	-5,526.7	5,530.8	1.58	-0.53	-1.49
12,781.0	90.40	268.00	6,932.7	-216.7	-5,621.6	5,625.8	1.04	0.74	0.74
12,876.0	90.70	268.20	6,931.8	-219.8	-5,716.6	5,720.8	0.38	0.32	0.21
12,971.0	90.00	267.70	6,931.2	-223.2	-5,811.5	5,815.8	0.91	-0.74	-0.53
13,066.0	89.10	267.00	6,932.0	-227.6	-5,906.4	5,910.8	1.20	-0.95	-0.74
13,160.0	90.40	266.60	6,932.4	-232.9	-6,000.2	6,004.8	1.45	1.38	-0.43
13,255.0	90.00	265.60	6,932.1	-239.3	-6,095.0	6,099.7	1.13	-0.42	-1.05

<b>Company:</b>	Bayswater Exploration & Production, LLC	<b>Local Co-ordinate Reference:</b>	Well Ward X-20-19HN
<b>Project:</b>	SEC.20-T6N-R66W	<b>TVD Reference:</b>	WELL @ 4753.0ft (RKB - 25')
<b>Site:</b>	Ward 20-M Pad Sec. 20-T6N-R66W	<b>MD Reference:</b>	WELL @ 4753.0ft (RKB - 25')
<b>Well:</b>	Ward X-20-19HN	<b>North Reference:</b>	True
<b>Wellbore:</b>	Ward X-20-19HN Wellbore #1	<b>Survey Calculation Method:</b>	Minimum Curvature
<b>Design:</b>	Wellbore #1	<b>Database:</b>	US_EDM

Survey									
Measured Depth (ft)	Inclination (°)	Azimuth (°)	Vertical Depth (ft)	+N/-S (ft)	+E/-W (ft)	Vertical Section (ft)	Dogleg Rate (°/100usft)	Build Rate (°/100usft)	Turn Rate (°/100usft)
13,350.0	91.10	267.50	6,931.2	-245.0	-6,189.8	6,194.7	2.31	1.16	2.00
13,445.0	91.30	269.60	6,929.2	-247.4	-6,284.8	6,289.6	2.22	0.21	2.21
13,539.0	91.20	269.30	6,927.1	-248.3	-6,378.8	6,383.6	0.34	-0.11	-0.32
13,634.0	90.70	269.40	6,925.5	-249.4	-6,473.7	6,478.5	0.54	-0.53	0.11
13,729.0	90.00	269.40	6,925.0	-250.4	-6,568.7	6,573.5	0.74	-0.74	0.00
13,824.0	89.70	269.60	6,925.2	-251.2	-6,663.7	6,668.4	0.38	-0.32	0.21
13,919.0	89.30	270.00	6,926.0	-251.6	-6,758.7	6,763.4	0.60	-0.42	0.42
14,014.0	89.10	268.70	6,927.4	-252.6	-6,853.7	6,858.3	1.38	-0.21	-1.37
14,109.0	88.10	268.00	6,929.7	-255.4	-6,948.6	6,953.3	1.28	-1.05	-0.74
14,203.0	89.70	267.70	6,931.5	-258.9	-7,042.5	7,047.3	1.73	1.70	-0.32
14,298.0	90.60	268.00	6,931.2	-262.5	-7,137.5	7,142.3	1.00	0.95	0.32
14,393.0	90.00	268.00	6,930.7	-265.8	-7,232.4	7,237.2	0.63	-0.63	0.00
14,488.0	89.30	268.40	6,931.3	-268.8	-7,327.4	7,332.2	0.85	-0.74	0.42
14,582.0	90.80	267.70	6,931.2	-272.0	-7,421.3	7,426.2	1.76	1.60	-0.74
14,677.0	90.10	266.80	6,930.5	-276.5	-7,516.2	7,521.2	1.20	-0.74	-0.95
14,772.0	91.50	268.20	6,929.2	-280.7	-7,611.1	7,616.2	2.08	1.47	1.47
14,867.0	90.80	268.00	6,927.3	-283.8	-7,706.0	7,711.2	0.77	-0.74	-0.21
14,961.0	90.50	267.50	6,926.2	-287.5	-7,799.9	7,805.2	0.62	-0.32	-0.53
15,056.0	89.80	268.70	6,925.9	-290.7	-7,894.9	7,900.2	1.46	-0.74	1.26
15,151.0	90.70	267.70	6,925.5	-293.6	-7,989.8	7,995.2	1.42	0.95	-1.05
15,246.0	90.20	267.70	6,924.8	-297.5	-8,084.8	8,090.2	0.53	-0.53	0.00
15,341.0	89.10	267.90	6,925.4	-301.1	-8,179.7	8,185.2	1.18	-1.16	0.21
15,435.0	90.40	266.30	6,925.8	-305.9	-8,273.6	8,279.2	2.19	1.38	-1.70
15,530.0	90.00	265.90	6,925.4	-312.3	-8,368.3	8,374.1	0.60	-0.42	-0.42
15,624.0	89.50	266.10	6,925.9	-318.9	-8,462.1	8,468.1	0.57	-0.53	0.21
15,719.0	91.10	267.30	6,925.4	-324.3	-8,556.9	8,563.1	2.11	1.68	1.26
15,814.0	90.40	267.70	6,924.1	-328.5	-8,651.8	8,658.0	0.85	-0.74	0.42
15,908.0	90.60	267.30	6,923.3	-332.6	-8,745.8	8,752.0	0.48	0.21	-0.43
16,003.0	89.80	267.70	6,923.0	-336.7	-8,840.7	8,847.0	0.94	-0.84	0.42
16,098.0	90.50	266.40	6,922.7	-341.6	-8,935.5	8,942.0	1.55	0.74	-1.37
16,193.0	91.00	266.40	6,921.5	-347.6	-9,030.3	9,037.0	0.53	0.53	0.00
16,287.0	90.50	268.40	6,920.2	-351.8	-9,124.2	9,131.0	2.19	-0.53	2.13
16,382.0	90.60	270.80	6,919.3	-352.5	-9,219.2	9,225.9	2.53	0.11	2.53
16,477.0	90.60	270.10	6,918.3	-351.8	-9,314.2	9,320.8	0.74	0.00	-0.74
16,572.0	89.60	267.00	6,918.2	-354.2	-9,409.2	9,415.8	3.43	-1.05	-3.26
16,667.0	89.80	265.90	6,918.7	-360.1	-9,504.0	9,510.8	1.18	0.21	-1.16
16,762.0	90.80	267.00	6,918.2	-365.9	-9,598.8	9,605.7	1.56	1.05	1.16
16,857.0	90.10	265.90	6,917.4	-371.8	-9,693.6	9,700.7	1.37	-0.74	-1.16
16,951.0	91.50	268.00	6,916.1	-376.8	-9,787.5	9,794.7	2.68	1.49	2.23
17,046.0	91.20	267.00	6,913.9	-381.0	-9,882.3	9,889.7	1.10	-0.32	-1.05
17,141.0	90.80	267.30	6,912.2	-385.7	-9,977.2	9,984.6	0.53	-0.42	0.32
17,236.0	90.30	266.40	6,911.3	-390.9	-10,072.1	10,079.6	1.08	-0.53	-0.95
17,331.0	90.10	265.90	6,911.0	-397.3	-10,166.8	10,174.6	0.57	-0.21	-0.53
17,426.0	89.90	265.40	6,911.0	-404.5	-10,261.6	10,269.5	0.57	-0.21	-0.53

<b>Company:</b>	Bayswater Exploration & Production, LLC	<b>Local Co-ordinate Reference:</b>	Well Ward X-20-19HN
<b>Project:</b>	SEC.20-T6N-R66W	<b>TVD Reference:</b>	WELL @ 4753.0ft (RKB - 25')
<b>Site:</b>	Ward 20-M Pad Sec. 20-T6N-R66W	<b>MD Reference:</b>	WELL @ 4753.0ft (RKB - 25')
<b>Well:</b>	Ward X-20-19HN	<b>North Reference:</b>	True
<b>Wellbore:</b>	Ward X-20-19HN Wellbore #1	<b>Survey Calculation Method:</b>	Minimum Curvature
<b>Design:</b>	Wellbore #1	<b>Database:</b>	US_EDM

Survey										
Measured Depth (ft)	Inclination (°)	Azimuth (°)	Vertical Depth (ft)	+N/-S (ft)	+E/-W (ft)	Vertical Section (ft)	Dogleg Rate (°/100usft)	Build Rate (°/100usft)	Turn Rate (°/100usft)	
17,520.0	90.70	265.00	6,910.5	-412.4	-10,355.2	10,363.4	0.95	0.85	-0.43	
17,588.0	90.60	264.20	6,909.7	-418.8	-10,422.9	10,431.3	1.19	-0.15	-1.18	
17,645.0	90.60	264.20	6,909.1	-424.5	-10,479.6	10,488.2	0.00	0.00	0.00	

Design Targets										
Target Name	Dip Angle (°)	Dip Dir. (°)	TVD (ft)	+N/-S (ft)	+E/-W (ft)	Northing (usft)	Easting (usft)	Latitude	Longitude	
SHL 259'FSL, 213'FEL, : - hit/miss target - Shape - Point	0.00	0.00	1.0	0.0	0.0	1,413,792.01	3,196,666.42	40.467109	-104.793156	
BHL 157'FSL, 470'FWL, - survey misses target center by 9.2ft at 17645.0ft MD (6909.1 TVD, -424.5 N, -10479.6 E) - Point	0.00	0.00	6,918.0	-425.8	-10,481.7	1,413,282.65	3,186,188.86	40.465934	-104.830826	
Boreline Vertex 159' FSL - survey misses target center by 6.2ft at 14918.6ft MD (6926.6 TVD, -285.7 N, -7757.6 E) - Point	0.00	0.00	6,929.0	-280.0	-7,757.8	1,413,450.17	3,188,911.35	40.466337	-104.821037	
Boreline Vertex 159'FSL - survey misses target center by 8.6ft at 12271.1ft MD (6931.7 TVD, -203.6 N, -5111.9 E) - Point	0.00	0.00	6,939.0	-208.2	-5,112.0	1,413,543.06	3,191,556.47	40.466536	-104.811528	

Checked By: _____	Approved By: _____	Date: _____
-------------------	--------------------	-------------