

1 Job Details & Summary

1.1 Geometry

Type	Function	OD (in)	ID (in)	Weight (lb/ft)	Thread	Top (ft)	Bottom (ft)	Excess (%)
Open Hole	Outer	n/a	13.5	n/a	n/a	0	1555	30
Casing	Inner	9.625	8.921	36	LTC	0	1549	0

1.2 Equipment / People

Unit Type	Unit	Employee #1	Mileage
Bulk Trailer	E421	Vasquez, Mike	140
Bulk Trailer	E435	Borst, David	140
Cement Pump	PPC11250	Staples, Anthony	140
Light Duty Pickups	51	Boyd, Brian	140

1.3 Timing

Event	Date/Time
Call Out	7/2/2017 06:30
Depart Facility	7/2/2017 07:30
On Location	7/2/2017 09:00
Rig Up Iron	7/2/2017 09:30
Job Started	7/2/2017 16:01
Job Completed	7/2/2017 17:32
Rig Down Iron	7/2/2017 17:35
Depart Location	7/2/2017 18:30

1.4 General Job Information

Metrics	Value
Well Fluid Density	8.4 lb/gal
Well Fluid Type	WBM
Rig Circulation Vol	220 bbls
Rig Circulation Time	1 hours
Calculated Displacement	116 bbls
Actual Displacement	116 bbls
Total Spacer to Surface	20 bbls
Total CMT to Surface	32 bbls

1.5 Well Fluid Details

Metrics	Value
Plastic Viscosity	1
Yield Point	4
10 sec. SGS	1
10 min. SGS	2
30 min. SGS	3
Filtrate	0.1
Flow Line Temp.	71

1.6 Job Details

Metrics	Value
Flare Prior to Job	No
Flare During Job	No
Flare at End of Job	No
Well Full Prior to Job	Yes
Well Fluid Density Into Well	8.4 lb/gal
Well Fluid Density Out of Well	8.4 lb/gal

1.7 Job Details (cont.)

Metrics	Value
BHCT	88 °F
BHST	110 °F

1.8 Circulation

Lost Circulation Experienced
No

1.9 Job Execution Information

Job	Fluid	Product	Function	Density (lb/gal)	Yield (ft ³ /sk)	Water Rq. (gal/sk)	Water Rq. (gal/bbl)	Volume (sks)	Volume (bbl)	Top (ft)
1	1	Water	Flush	8.33			42.00		20.00	0
1	2	ALTCem S100-12	Lead	12.00	2.53	14.85		270.00	121.49	0
1	3	ALTCem S100-12	Tail	12.50	2.22	12.58		155.00	61.38	1000
1	4	Water	DisplacementFinal	8.33			42.00		113.00	0
1	5	ALTCem S100-12	Topout	12.50	2.22	12.58		150.00	59.40	0

1.10 Job Fluid Details

Job	Fluid	Type	Fluid	Product	Function	Conc.	Uom
1	2	Lead	ALTCem S100-12	AC3-10	Cement	100.00	%
1	2	Lead	ALTCem S100-12	ACL-10	Accelerator	2.00	lb/sk
1	2	Lead	ALTCem S100-12	ACL-20	Accelerator	5.00	%BWOB
1	2	Lead	ALTCem S100-12	ADF-11	Defoamer	0.30	%BWOB
1	2	Lead	ALTCem S100-12	ALC-10	LostCirculation	0.13	lb/sk
1	2	Lead	ALTCem S100-12	AXE-30	Extender	2.00	lb/sk
1	3	Tail	ALTCem S100-12	AC3-10	Cement	100.00	%
1	3	Tail	ALTCem S100-12	ACL-10	Accelerator	2.00	lb/sk
1	3	Tail	ALTCem S100-12	ACL-20	Accelerator	5.00	%BWOB
1	3	Tail	ALTCem S100-12	ADF-11	Defoamer	0.30	%BWOB
1	3	Tail	ALTCem S100-12	ALC-10	LostCirculation	0.13	lb/sk
1	3	Tail	ALTCem S100-12	AXE-30	Extender	2.00	lb/sk
1	5	Topout	ALTCem S100-12	AC3-10	Cement	100.00	%
1	5	Topout	ALTCem S100-12	ACL-10	Accelerator	2.00	lb/sk
1	5	Topout	ALTCem S100-12	ACL-20	Accelerator	5.00	%BWOB
1	5	Topout	ALTCem S100-12	ADF-11	Defoamer	0.30	%BWOB
1	5	Topout	ALTCem S100-12	ALC-10	LostCirculation	0.13	lb/sk
1	5	Topout	ALTCem S100-12	AXE-30	Extender	2.00	lb/sk

2 Job Logs

Line	Event	Date (MM/DD/YY)	Time (HH:MM)	Density (lb/gal)	Pump Rate (bpm)	Pump Volume (bbls)	Pipe Pressure (psi)	Comment
1	Callout	7/2/2017	06:00					CUSTOMER REQUESTED CREW ON LOCATION 10:30
2	DEPART FROM SHOP	7/2/2017	07:30					CREW DEPART SHOP AFTER JOURNEY MANAGEMENT
3	AOL	7/2/2017	09:00					CREW ARRIVED ON LOC. MEET WITH COSTUMER
4	STEACS BRIEFING	7/2/2017	09:15					BRIEFING OVER RIG UP AND HAZARDS
5	Rig Up Iron	7/2/2017	09:30					RIGGED UP IRON AND EQUIPMENT
6	Waiting	7/2/2017	10:30					WAITING ON RIG TO RUN CSG.
7	RIG LANDS CASING	7/2/2017	15:00					RIG LANDS CSG. BOTTOMS UP
8	STEACS BRIEFING	7/2/2017	15:30					BRIEFING WITH BJ & RIG CREW OVER JOB & HAZARDS
9	FILL LINES	7/2/2017	16:01	8.33	3	3	30	FILL P & L
10	PSI TEST	7/2/2017	16:07				3200	PSI TEST TO 3000
11	PUMP WATER SPACER	7/2/2017	16:09	8.33	5	20	78	PUMP 20BBLS OF H2O
12	PUMP LEAD CEMENT	7/2/2017	16:19	12	5	121	107	PUMP 121BBLS OF LEAD CMT (270 SKS, 2.53 Y, 12PPG, 14.85GPS
13	PUMP TAIL CEMENT	7/2/2017	16:43	12.5	5	61	153	PUMP 61BBLS OF TAIL CMT (155SKS, 2.22Y 12.5PPG, 12.58GPS
14	SHUTDOWN	7/2/2017	16:59					SHUTDOWN PUMPING
15	DROP PLUG	7/2/2017	17:04					DROP PLUG WITH COMPANY MAN
16	START DISP.	7/2/2017	17:05	8.33	6	116	320	PUMP 116BBLS FRESH WATER DISP.
17	CMT TO SURFACE	7/2/2017	17:22	12	6	84		84BBL INTO DISP. GOT 32BBLS BACK
18	SLOW RATE	7/2/2017	17:26	8.33	2	10	423	LAST 10BBLS SLOW TO 2BPM
19	LAND PLUG	7/2/2017	17:29	8.33	2		971	BUMP PLUG 971S FCP 423
20	CHECK FLOATS	7/2/2017	17:32					FLOATS HELD 1/2 BBLS BACK
21	RIG DOWN IRON	7/2/2017	17:35					CREW RIGGED DOWN IRON AND EQUIPMENT
22	DEPART LOCATION	7/2/2017	18:30					CREW DEPART LOCATIONS

3 Water Analysis

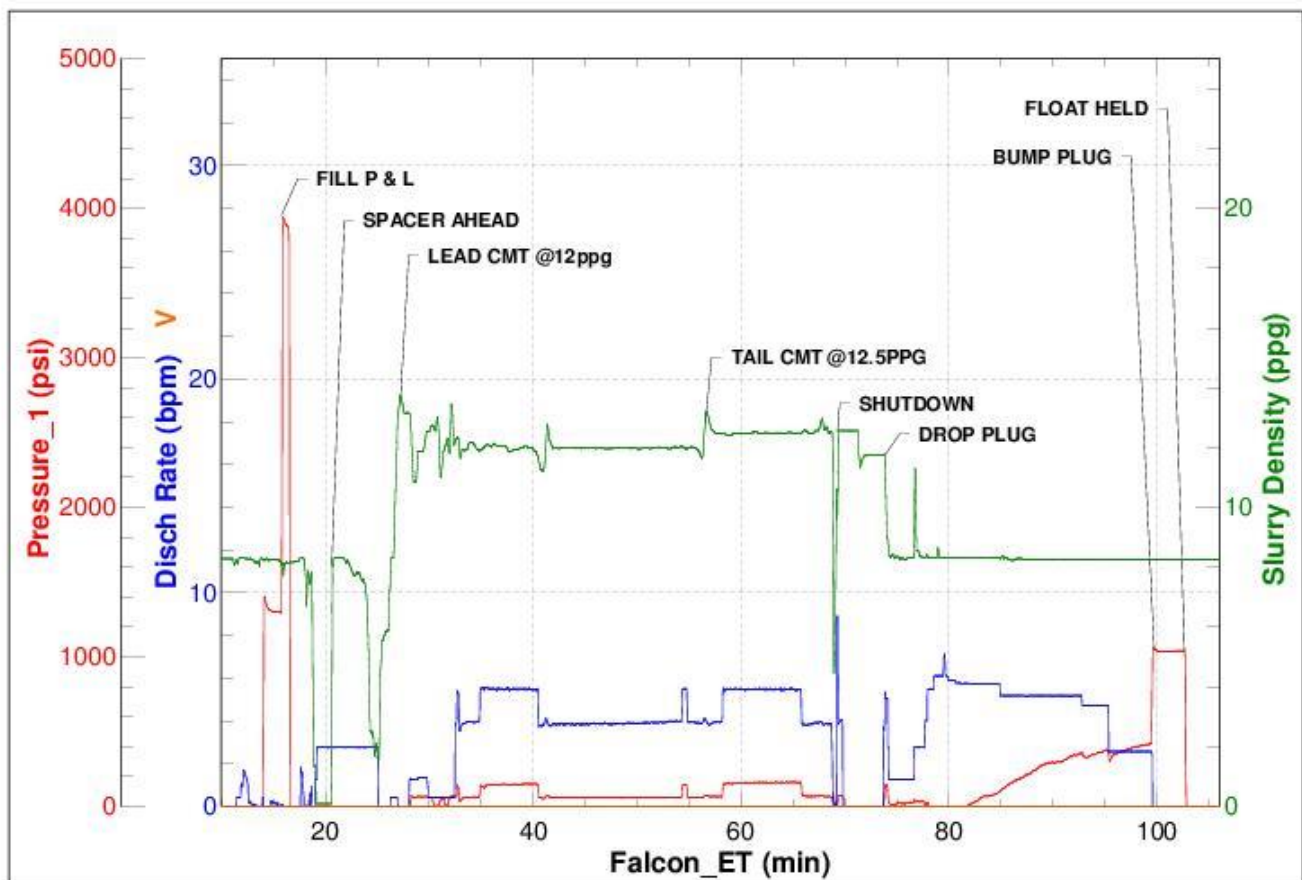
Metrics	Value	Recommended
Water Source	Upright Rig Tank	
Temperature	69 °F	50-80 °F
pH Level	7	5.5-8.5
Chlorides	0 mg/L	0-3000 mg/L
Total Alkalinity	80	0-1000
Total Hardness	70 mg/L	0-500 mg/L
Carbonates	100 mg/L	0-100 mg/L
Sulfates	<200 mg/L	0-1500 mg/L
Potassium	450 mg/L	0-3000 mg/L

4 Pump Diagrams



JobMaster Program Version 4.02

Customer: Bayswater
Well Name: Ward O-20-19HN



Job Start: Sunday, July 02, 2017