

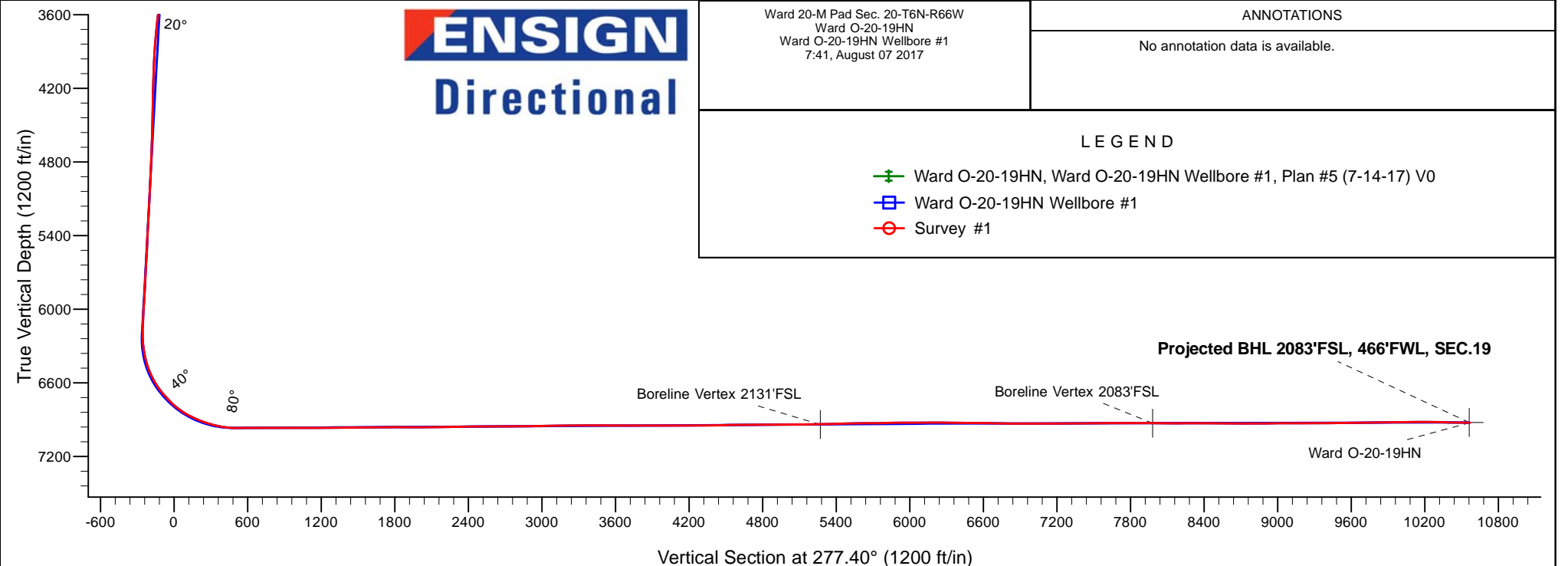
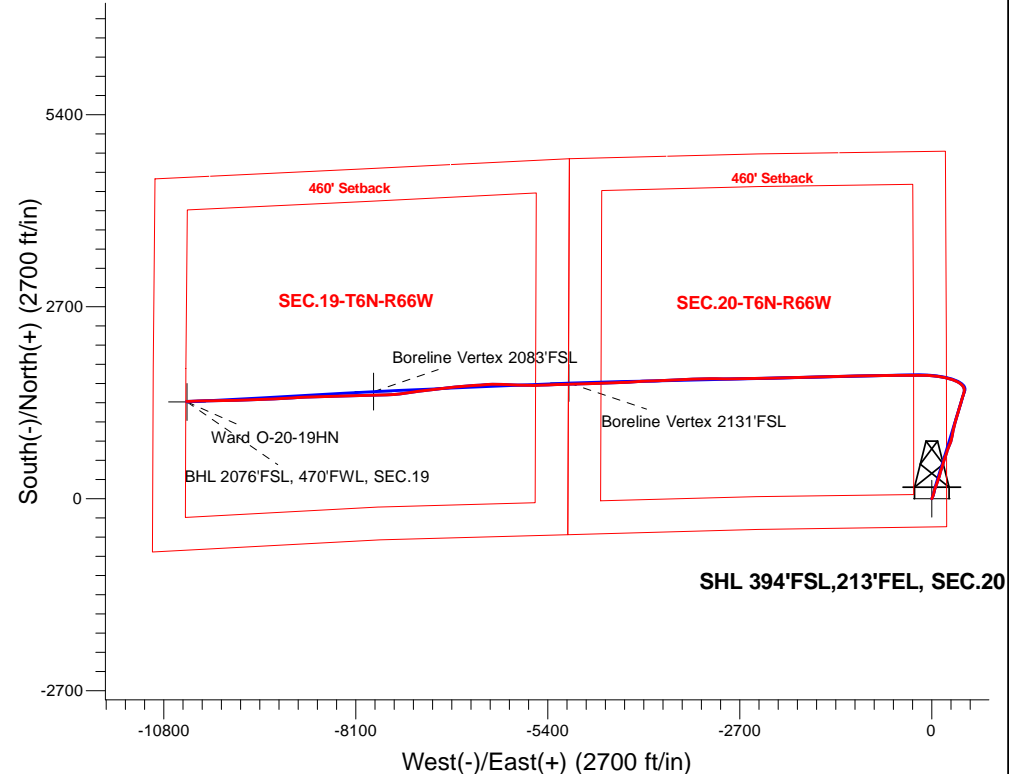
# Bayswater Exploration & Production, LLC

Well Name: **Ward O-20-19HN**

Surface Location: Ward 20-M Pad Sec. 20-T6N-R66W  
North American Datum 1983 , US State Plane 1983, Colorado Northern Zone  
Ground Elevation: 4728.0  
+N/-S+E/-W Northing Easting Latitude Longitude Slot  
0.0 0.0 1413927.13 196665.34 40.467480 -104.793156  
RKB - 25' WELL @ 4753.0ft (RKB - 25')

## FINAL SURVEY

**Projected Bottom Hole Location**  
**17,873'MD 6926'TVD 1369'N & 10478'W of SHL**  
**88.7 degree Incl @ 267.9 degree AZM**



**ENSIGN**  
**Directional**

Ward 20-M Pad Sec. 20-T6N-R66W  
Ward O-20-19HN  
Ward O-20-19HN Wellbore #1  
7:41, August 07 2017

### ANNOTATIONS

No annotation data is available.

### LEGEND

- Ward O-20-19HN, Ward O-20-19HN Wellbore #1, Plan #5 (7-14-17) V0
- Ward O-20-19HN Wellbore #1
- Survey #1



## **Bayswater Exploration & Production, LLC**

**SEC.20-T6N-R66W**

**Ward 20-M Pad Sec. 20-T6N-R66W**

**Ward O-20-19HN**

**Ward O-20-19HN Wellbore #1**

**Survey: Survey #1**

## **Standard Survey Report**

**07 August, 2017**



**BAYSWATER**  
**EXPLORATION & PRODUCTION, LLC**

<b>Company:</b>	Bayswater Exploration & Production, LLC	<b>Local Co-ordinate Reference:</b>	Well Ward O-20-19HN
<b>Project:</b>	SEC.20-T6N-R66W	<b>TVD Reference:</b>	WELL @ 4753.0ft (RKB - 25')
<b>Site:</b>	Ward 20-M Pad Sec. 20-T6N-R66W	<b>MD Reference:</b>	WELL @ 4753.0ft (RKB - 25')
<b>Well:</b>	Ward O-20-19HN	<b>North Reference:</b>	True
<b>Wellbore:</b>	Ward O-20-19HN Wellbore #1	<b>Survey Calculation Method:</b>	Minimum Curvature
<b>Design:</b>	Ward O-20-19HN Wellbore #1	<b>Database:</b>	US_EDM

<b>Project</b>	SEC.20-T6N-R66W, Weld County, Colorado		
<b>Map System:</b>	US State Plane 1983	<b>System Datum:</b>	Mean Sea Level
<b>Geo Datum:</b>	North American Datum 1983		Using Well Reference Point
<b>Map Zone:</b>	Colorado Northern Zone		Using geodetic scale factor

Site	Ward 20-M Pad Sec. 20-T6N-R66W				
Site Position:		Northing:	1,413,957.04 usft	Latitude:	40.467562
From:	Lat/Long	Easting:	3,196,665.10 usft	Longitude:	-104.793156
Position Uncertainty:	0.0 ft	Slot Radius:	13-3/16 "	Grid Convergence:	0.46 °

Well	Ward O-20-19HN					
Well Position	+N/-S	0.0 ft	Northing:	1,413,927.13 usft	Latitude:	40.467480
	+E/-W	0.0 ft	Easting:	3,196,665.34 usft	Longitude:	-104.793156
Position Uncertainty		0.0 ft	Wellhead Elevation:	0.0 ft	Ground Level:	4,728.0 ft

<b>Wellbore</b>	Ward O-20-19HN Wellbore #1				
<b>Magnetics</b>	<b>Model Name</b>	<b>Sample Date</b>	<b>Declination (°)</b>	<b>Dip Angle (°)</b>	<b>Field Strength (nT)</b>
	IGRF2010	7/3/2017	8.07	66.89	52,527

<b>Design</b>	Ward O-20-19HN Wellbore #1				
<b>Audit Notes:</b>					
<b>Version:</b>	1.0	<b>Phase:</b>	ACTUAL	<b>Tie On Depth:</b>	0.0
<b>Vertical Section:</b>	<b>Depth From (TVD) (ft)</b>	<b>+N/-S (ft)</b>	<b>+E/-W (ft)</b>	<b>Direction (°)</b>	
	0.0	0.0	0.0	277.40	

<b>Survey Program</b>	<b>Date</b>	8/7/2017			
<b>From (ft)</b>	<b>To (ft)</b>	<b>Survey (Wellbore)</b>	<b>Tool Name</b>	<b>Description</b>	
210.0	17,873.0	Survey #1 (Ward O-20-19HN Wellbore #1)	MWD	MWD - Standard	

<b>Survey</b>										
<b>Measured Depth (ft)</b>	<b>Inclination (°)</b>	<b>Azimuth (°)</b>	<b>Vertical Depth (ft)</b>	<b>+N/-S (ft)</b>	<b>+E/-W (ft)</b>	<b>Vertical Section (ft)</b>	<b>Dogleg Rate (°/100usft)</b>	<b>Build Rate (°/100usft)</b>	<b>Turn Rate (°/100usft)</b>	
0.0	0.00	0.00	0.0	0.0	0.0	0.0	0.00	0.00	0.00	
210.0	0.10	319.90	210.0	0.1	-0.1	0.1	0.05	0.05	0.00	
304.0	0.30	265.40	304.0	0.2	-0.4	0.4	0.27	0.21	-57.98	
399.0	0.00	0.00	399.0	0.2	-0.7	0.7	0.32	-0.32	0.00	
494.0	0.40	236.90	494.0	0.0	-0.9	0.9	0.42	0.42	0.00	
589.0	0.70	358.60	589.0	0.4	-1.2	1.3	1.02	0.32	128.11	
683.0	2.00	29.70	683.0	2.4	-0.4	0.7	1.54	1.38	33.09	
778.0	3.90	25.30	777.8	6.7	1.8	-0.9	2.01	2.00	-4.63	
873.0	5.40	26.00	872.5	13.7	5.1	-3.3	1.58	1.58	0.74	
968.0	6.60	19.20	967.0	22.9	8.9	-5.8	1.47	1.26	-7.16	

<b>Company:</b>	Bayswater Exploration & Production, LLC	<b>Local Co-ordinate Reference:</b>	Well Ward O-20-19HN
<b>Project:</b>	SEC.20-T6N-R66W	<b>TVD Reference:</b>	WELL @ 4753.0ft (RKB - 25')
<b>Site:</b>	Ward 20-M Pad Sec. 20-T6N-R66W	<b>MD Reference:</b>	WELL @ 4753.0ft (RKB - 25')
<b>Well:</b>	Ward O-20-19HN	<b>North Reference:</b>	True
<b>Wellbore:</b>	Ward O-20-19HN Wellbore #1	<b>Survey Calculation Method:</b>	Minimum Curvature
<b>Design:</b>	Ward O-20-19HN Wellbore #1	<b>Database:</b>	US_EDM

Survey									
Measured Depth (ft)	Inclination (°)	Azimuth (°)	Vertical Depth (ft)	+N/-S (ft)	+E/-W (ft)	Vertical Section (ft)	Dogleg Rate (°/100usft)	Build Rate (°/100usft)	Turn Rate (°/100usft)
1,063.0	7.30	20.40	1,061.3	33.7	12.8	-8.3	0.75	0.74	1.26
1,157.0	8.20	15.80	1,154.4	45.7	16.7	-10.6	1.16	0.96	-4.89
1,252.0	9.40	17.70	1,248.3	59.6	20.9	-13.0	1.30	1.26	2.00
1,347.0	10.80	17.40	1,341.9	75.5	25.9	-15.9	1.47	1.47	-0.32
1,442.0	10.90	11.40	1,435.2	92.8	30.3	-18.1	1.19	0.11	-6.32
1,495.0	10.60	12.80	1,487.2	102.5	32.4	-18.9	0.75	-0.57	2.64
1,574.0	10.70	12.50	1,564.9	116.7	35.6	-20.3	0.14	0.13	-0.38
1,669.0	11.10	19.30	1,658.2	134.0	40.5	-22.9	1.42	0.42	7.16
1,764.0	11.40	21.40	1,751.3	151.3	47.0	-27.1	0.53	0.32	2.21
1,859.0	12.20	20.40	1,844.3	169.5	53.9	-31.6	0.87	0.84	-1.05
1,954.0	13.50	20.20	1,936.9	189.3	61.2	-36.3	1.37	1.37	-0.21
2,048.0	15.00	18.60	2,028.0	211.1	68.9	-41.1	1.65	1.60	-1.70
2,142.0	16.90	18.80	2,118.4	235.6	77.2	-46.2	2.02	2.02	0.21
2,236.0	18.40	18.40	2,208.0	262.6	86.3	-51.7	1.60	1.60	-0.43
2,331.0	17.70	18.10	2,298.3	290.6	95.5	-57.3	0.74	-0.74	-0.32
2,426.0	17.10	16.90	2,389.0	317.7	104.0	-62.2	0.74	-0.63	-1.26
2,521.0	19.30	16.50	2,479.2	346.1	112.6	-67.0	2.32	2.32	-0.42
2,616.0	18.90	16.20	2,569.0	375.9	121.3	-71.9	0.43	-0.42	-0.32
2,711.0	18.60	16.90	2,658.9	405.2	130.0	-76.7	0.39	-0.32	0.74
2,805.0	18.50	16.70	2,748.1	433.8	138.6	-81.6	0.13	-0.11	-0.21
2,901.0	17.30	15.30	2,839.4	462.2	146.8	-86.0	1.33	-1.25	-1.46
2,996.0	18.90	19.00	2,929.7	490.3	155.5	-91.0	2.07	1.68	3.89
3,091.0	18.40	17.70	3,019.7	519.2	165.1	-96.8	0.68	-0.53	-1.37
3,185.0	16.90	16.90	3,109.3	546.4	173.6	-101.7	1.62	-1.60	-0.85
3,280.0	17.60	20.60	3,200.0	573.0	182.6	-107.3	1.37	0.74	3.89
3,374.0	18.80	18.40	3,289.3	600.7	192.4	-113.4	1.47	1.28	-2.34
3,469.0	17.10	16.20	3,379.7	628.6	201.2	-118.5	1.93	-1.79	-2.32
3,563.0	18.50	16.90	3,469.2	656.2	209.3	-123.0	1.51	1.49	0.74
3,658.0	17.90	20.00	3,559.4	684.3	218.7	-128.7	1.20	-0.63	3.26
3,753.0	20.00	23.20	3,649.3	713.0	230.1	-136.3	2.47	2.21	3.37
3,849.0	20.10	23.20	3,739.5	743.2	243.1	-145.3	0.10	0.10	0.00
3,943.0	20.70	21.10	3,827.6	773.6	255.4	-153.6	1.01	0.64	-2.23
4,038.0	22.20	15.10	3,916.0	806.6	266.2	-160.0	2.80	1.58	-6.32
4,133.0	21.50	13.30	4,004.2	840.8	274.8	-164.2	1.02	-0.74	-1.89
4,227.0	18.60	12.10	4,092.5	872.3	281.9	-167.2	3.12	-3.09	-1.28
4,321.0	18.00	12.50	4,181.7	901.1	288.2	-169.7	0.65	-0.64	0.43
4,415.0	17.00	11.80	4,271.4	928.7	294.2	-172.0	1.09	-1.06	-0.74
4,510.0	16.60	10.40	4,362.3	955.7	299.5	-173.8	0.60	-0.42	-1.47
4,605.0	16.40	10.00	4,453.4	982.2	304.2	-175.1	0.24	-0.21	-0.42
4,700.0	17.00	14.00	4,544.4	1,008.9	309.9	-177.3	1.36	0.63	4.21
4,794.0	16.40	14.70	4,634.4	1,035.1	316.6	-180.6	0.67	-0.64	0.74
4,889.0	15.70	13.50	4,725.7	1,060.6	323.0	-183.7	0.82	-0.74	-1.26
4,984.0	16.00	14.20	4,817.1	1,085.8	329.2	-186.6	0.37	0.32	0.74
5,078.0	15.90	17.20	4,907.5	1,110.6	336.2	-190.3	0.88	-0.11	3.19

<b>Company:</b>	Bayswater Exploration & Production, LLC	<b>Local Co-ordinate Reference:</b>	Well Ward O-20-19HN
<b>Project:</b>	SEC.20-T6N-R66W	<b>TVD Reference:</b>	WELL @ 4753.0ft (RKB - 25')
<b>Site:</b>	Ward 20-M Pad Sec. 20-T6N-R66W	<b>MD Reference:</b>	WELL @ 4753.0ft (RKB - 25')
<b>Well:</b>	Ward O-20-19HN	<b>North Reference:</b>	True
<b>Wellbore:</b>	Ward O-20-19HN Wellbore #1	<b>Survey Calculation Method:</b>	Minimum Curvature
<b>Design:</b>	Ward O-20-19HN Wellbore #1	<b>Database:</b>	US_EDM

Survey										
Measured Depth (ft)	Inclination (°)	Azimuth (°)	Vertical Depth (ft)	+N/-S (ft)	+E/-W (ft)	Vertical Section (ft)	Dogleg Rate (°/100usft)	Build Rate (°/100usft)	Turn Rate (°/100usft)	
5,172.0	16.50	17.60	4,997.8	1,135.6	344.1	-194.9	0.65	0.64	0.43	
5,267.0	17.40	18.10	5,088.6	1,162.0	352.6	-199.9	0.96	0.95	0.53	
5,361.0	18.30	16.50	5,178.1	1,189.5	361.1	-204.8	1.09	0.96	-1.70	
5,456.0	17.60	17.70	5,268.5	1,217.5	369.7	-209.8	0.83	-0.74	1.26	
5,550.0	18.10	14.90	5,358.0	1,245.1	377.8	-214.2	1.06	0.53	-2.98	
5,676.0	17.00	17.00	5,478.1	1,281.7	388.2	-219.8	1.01	-0.87	1.67	
5,771.0	18.30	17.20	5,568.6	1,309.2	396.7	-224.7	1.37	1.37	0.21	
5,865.0	19.80	16.30	5,657.5	1,338.6	405.5	-229.6	1.63	1.60	-0.96	
5,960.0	17.50	14.00	5,747.5	1,367.9	413.5	-233.8	2.54	-2.42	-2.42	
6,054.0	19.00	17.00	5,836.8	1,396.2	421.4	-238.0	1.88	1.60	3.19	
6,148.0	17.60	20.00	5,926.0	1,424.2	430.7	-243.6	1.79	-1.49	3.19	
6,243.0	18.20	16.00	6,016.4	1,452.0	439.7	-249.0	1.44	0.63	-4.21	
6,338.0	18.50	16.00	6,106.6	1,480.7	448.0	-253.4	0.32	0.32	0.00	
6,385.0	17.40	14.90	6,151.3	1,494.7	451.8	-255.5	2.45	-2.34	-2.34	
6,431.0	16.70	12.60	6,195.3	1,507.8	455.0	-256.9	2.11	-1.52	-5.00	
6,478.0	18.60	358.80	6,240.1	1,521.9	456.4	-256.4	9.75	4.04	-29.36	
6,526.0	20.20	348.40	6,285.4	1,537.7	454.5	-252.6	7.92	3.33	-21.67	
6,573.0	20.30	344.50	6,329.5	1,553.5	450.7	-246.8	2.88	0.21	-8.30	
6,620.0	20.10	333.80	6,373.6	1,568.6	445.0	-239.1	7.86	-0.43	-22.77	
6,667.0	20.80	326.10	6,417.6	1,582.8	436.8	-229.2	5.91	1.49	-16.38	
6,715.0	22.30	317.60	6,462.3	1,596.6	425.9	-216.6	7.21	3.13	-17.71	
6,762.0	26.00	310.20	6,505.2	1,609.8	412.0	-201.1	10.16	7.87	-15.74	
6,809.0	27.90	306.00	6,547.1	1,622.9	395.2	-182.8	5.72	4.04	-8.94	
6,856.0	31.70	300.00	6,587.9	1,635.6	375.6	-161.7	10.27	8.09	-12.77	
6,904.0	35.70	295.80	6,627.8	1,648.0	352.1	-136.8	9.64	8.33	-8.75	
6,951.0	39.50	293.00	6,665.0	1,659.8	325.9	-109.3	8.86	8.09	-5.96	
6,999.0	41.40	289.00	6,701.5	1,670.9	296.9	-79.1	6.70	3.96	-8.33	
7,093.0	46.30	285.60	6,769.3	1,690.2	234.7	-14.9	5.78	5.21	-3.62	
7,188.0	56.00	282.10	6,828.9	1,707.7	162.9	58.5	10.60	10.21	-3.68	
7,283.0	63.80	278.80	6,876.5	1,722.5	82.2	140.5	8.74	8.21	-3.47	
7,377.0	69.20	273.50	6,914.0	1,731.7	-3.5	226.6	7.73	5.74	-5.64	
7,471.0	75.60	272.60	6,942.4	1,736.4	-92.9	315.9	6.87	6.81	-0.96	
7,566.0	81.50	269.10	6,961.2	1,737.8	-185.9	408.3	7.18	6.21	-3.68	
7,661.0	89.80	269.10	6,968.4	1,736.3	-280.6	502.0	8.74	8.74	0.00	
7,756.0	90.60	270.90	6,968.1	1,736.3	-375.6	596.2	2.07	0.84	1.89	
7,852.0	90.30	270.20	6,967.3	1,737.2	-471.6	691.5	0.79	-0.31	-0.73	
7,947.0	89.70	270.50	6,967.3	1,737.8	-566.6	785.8	0.71	-0.63	0.32	
8,042.0	89.90	269.60	6,967.7	1,737.9	-661.5	880.0	0.97	0.21	-0.95	
8,136.0	89.90	268.90	6,967.8	1,736.6	-755.5	973.0	0.74	0.00	-0.74	
8,232.0	89.50	268.60	6,968.3	1,734.5	-851.5	1,067.9	0.52	-0.42	-0.31	
8,326.0	90.60	267.20	6,968.3	1,731.1	-945.4	1,160.6	1.89	1.17	-1.49	
8,421.0	90.60	266.60	6,967.3	1,726.0	-1,040.3	1,254.0	0.63	0.00	-0.63	
8,515.0	90.70	268.60	6,966.2	1,722.0	-1,134.2	1,346.7	2.13	0.11	2.13	

<b>Company:</b>	Bayswater Exploration & Production, LLC	<b>Local Co-ordinate Reference:</b>	Well Ward O-20-19HN
<b>Project:</b>	SEC.20-T6N-R66W	<b>TVD Reference:</b>	WELL @ 4753.0ft (RKB - 25')
<b>Site:</b>	Ward 20-M Pad Sec. 20-T6N-R66W	<b>MD Reference:</b>	WELL @ 4753.0ft (RKB - 25')
<b>Well:</b>	Ward O-20-19HN	<b>North Reference:</b>	True
<b>Wellbore:</b>	Ward O-20-19HN Wellbore #1	<b>Survey Calculation Method:</b>	Minimum Curvature
<b>Design:</b>	Ward O-20-19HN Wellbore #1	<b>Database:</b>	US_EDM

Survey										
Measured Depth (ft)	Inclination (°)	Azimuth (°)	Vertical Depth (ft)	+N/-S (ft)	+E/-W (ft)	Vertical Section (ft)	Dogleg Rate (°/100usft)	Build Rate (°/100usft)	Turn Rate (°/100usft)	
8,610.0	90.80	267.90	6,965.0	1,719.1	-1,229.2	1,440.4	0.74	0.11	-0.74	
8,709.0	90.90	270.00	6,963.5	1,717.3	-1,328.1	1,538.4	2.12	0.10	2.12	
8,803.0	90.00	269.60	6,962.7	1,717.0	-1,422.1	1,631.5	1.05	-0.96	-0.43	
8,898.0	89.70	268.80	6,963.0	1,715.7	-1,517.1	1,725.5	0.90	-0.32	-0.84	
8,993.0	89.90	267.70	6,963.3	1,712.8	-1,612.1	1,819.3	1.18	0.21	-1.16	
9,087.0	90.60	268.90	6,962.9	1,710.0	-1,706.0	1,912.1	1.48	0.74	1.28	
9,182.0	89.80	269.10	6,962.6	1,708.3	-1,801.0	2,006.1	0.87	-0.84	0.21	
9,277.0	91.50	268.40	6,961.5	1,706.2	-1,896.0	2,100.0	1.94	1.79	-0.74	
9,371.0	90.20	267.70	6,960.1	1,703.0	-1,989.9	2,192.8	1.57	-1.38	-0.74	
9,466.0	91.30	269.50	6,958.9	1,700.7	-2,084.9	2,286.6	2.22	1.16	1.89	
9,561.0	90.70	269.50	6,957.2	1,699.9	-2,179.8	2,380.7	0.63	-0.63	0.00	
9,656.0	90.50	269.10	6,956.2	1,698.7	-2,274.8	2,474.8	0.47	-0.21	-0.42	
9,750.0	90.00	268.60	6,955.8	1,696.8	-2,368.8	2,567.7	0.75	-0.53	-0.53	
9,845.0	89.20	268.10	6,956.5	1,694.1	-2,463.8	2,661.5	0.99	-0.84	-0.53	
9,940.0	91.50	267.90	6,955.9	1,690.8	-2,558.7	2,755.2	2.43	2.42	-0.21	
10,035.0	90.90	268.60	6,953.9	1,687.9	-2,653.6	2,849.0	0.97	-0.63	0.74	
10,128.0	90.90	269.10	6,952.4	1,686.0	-2,746.6	2,941.0	0.54	0.00	0.54	
10,223.0	90.60	270.00	6,951.2	1,685.3	-2,841.6	3,035.1	1.00	-0.32	0.95	
10,318.0	90.80	270.50	6,950.0	1,685.7	-2,936.6	3,129.3	0.57	0.21	0.53	
10,413.0	90.70	271.20	6,948.8	1,687.1	-3,031.6	3,223.7	0.74	-0.11	0.74	
10,508.0	90.50	269.30	6,947.8	1,687.5	-3,126.6	3,317.9	2.01	-0.21	-2.00	
10,603.0	89.90	268.90	6,947.5	1,686.0	-3,221.5	3,411.9	0.76	-0.63	-0.42	
10,698.0	89.50	269.80	6,948.0	1,685.0	-3,316.5	3,506.0	1.04	-0.42	0.95	
10,793.0	90.00	267.00	6,948.4	1,682.3	-3,411.5	3,599.8	2.99	0.53	-2.95	
10,887.0	90.20	266.30	6,948.2	1,676.8	-3,505.3	3,692.2	0.77	0.21	-0.74	
10,982.0	89.60	265.40	6,948.4	1,669.9	-3,600.1	3,785.2	1.14	-0.63	-0.95	
11,077.0	90.10	267.90	6,948.6	1,664.4	-3,694.9	3,878.6	2.68	0.53	2.63	
11,172.0	89.70	270.50	6,948.8	1,663.1	-3,789.9	3,972.6	2.77	-0.42	2.74	
11,266.0	90.20	267.70	6,948.9	1,661.6	-3,883.9	4,065.6	3.03	0.53	-2.98	
11,361.0	89.50	267.90	6,949.1	1,657.9	-3,978.8	4,159.3	0.77	-0.74	0.21	
11,456.0	90.60	266.10	6,949.0	1,653.0	-4,073.7	4,252.7	2.22	1.16	-1.89	
11,551.0	90.70	265.10	6,948.0	1,645.7	-4,168.4	4,345.7	1.06	0.11	-1.05	
11,645.0	91.40	267.50	6,946.2	1,639.6	-4,262.1	4,437.9	2.66	0.74	2.55	
11,740.0	90.90	267.50	6,944.3	1,635.5	-4,357.0	4,531.5	0.53	-0.53	0.00	
11,835.0	90.90	267.30	6,942.8	1,631.2	-4,451.9	4,625.0	0.21	0.00	-0.21	
11,930.0	90.30	267.30	6,941.8	1,626.7	-4,546.8	4,718.5	0.63	-0.63	0.00	
12,025.0	90.30	268.90	6,941.3	1,623.5	-4,641.8	4,812.3	1.68	0.00	1.68	
12,120.0	89.30	268.90	6,941.7	1,621.7	-4,736.7	4,906.2	1.05	-1.05	0.00	
12,215.0	90.70	268.40	6,941.7	1,619.5	-4,831.7	5,000.1	1.56	1.47	-0.53	
12,309.0	91.20	268.80	6,940.1	1,617.2	-4,925.7	5,093.0	0.68	0.53	0.43	
12,404.0	91.00	268.10	6,938.3	1,614.6	-5,020.6	5,186.8	0.77	-0.21	-0.74	
12,499.0	90.30	267.30	6,937.2	1,610.8	-5,115.5	5,280.5	1.12	-0.74	-0.84	
12,594.0	91.70	268.10	6,935.6	1,607.0	-5,210.4	5,374.1	1.70	1.47	0.84	

<b>Company:</b>	Bayswater Exploration & Production, LLC	<b>Local Co-ordinate Reference:</b>	Well Ward O-20-19HN
<b>Project:</b>	SEC.20-T6N-R66W	<b>TVD Reference:</b>	WELL @ 4753.0ft (RKB - 25')
<b>Site:</b>	Ward 20-M Pad Sec. 20-T6N-R66W	<b>MD Reference:</b>	WELL @ 4753.0ft (RKB - 25')
<b>Well:</b>	Ward O-20-19HN	<b>North Reference:</b>	True
<b>Wellbore:</b>	Ward O-20-19HN Wellbore #1	<b>Survey Calculation Method:</b>	Minimum Curvature
<b>Design:</b>	Ward O-20-19HN Wellbore #1	<b>Database:</b>	US_EDM

Survey									
Measured Depth (ft)	Inclination (°)	Azimuth (°)	Vertical Depth (ft)	+N/-S (ft)	+E/-W (ft)	Vertical Section (ft)	Dogleg Rate (°/100usft)	Build Rate (°/100usft)	Turn Rate (°/100usft)
12,688.0	91.30	267.50	6,933.1	1,603.4	-5,304.3	5,466.7	0.77	-0.43	-0.64
12,783.0	91.50	270.50	6,930.8	1,601.7	-5,399.3	5,560.7	3.16	0.21	3.16
12,878.0	90.00	265.80	6,929.5	1,598.6	-5,494.2	5,654.4	5.19	-1.58	-4.95
12,973.0	90.70	269.60	6,929.0	1,594.8	-5,589.1	5,748.0	4.07	0.74	4.00
13,068.0	91.40	272.30	6,927.2	1,596.4	-5,684.1	5,842.4	2.94	0.74	2.84
13,162.0	90.10	270.50	6,926.0	1,598.7	-5,778.0	5,935.9	2.36	-1.38	-1.91
13,257.0	90.40	272.40	6,925.6	1,601.1	-5,873.0	6,030.3	2.02	0.32	2.00
13,352.0	90.20	273.00	6,925.1	1,605.6	-5,967.9	6,125.0	0.67	-0.21	0.63
13,447.0	89.50	271.90	6,925.3	1,609.6	-6,062.8	6,219.7	1.37	-0.74	-1.16
13,541.0	90.00	268.40	6,925.7	1,609.9	-6,156.8	6,312.9	3.76	0.53	-3.72
13,636.0	89.90	267.00	6,925.8	1,606.1	-6,251.7	6,406.5	1.48	-0.11	-1.47
13,731.0	89.30	265.60	6,926.5	1,599.9	-6,346.5	6,499.8	1.60	-0.63	-1.47
13,826.0	88.70	265.20	6,928.1	1,592.3	-6,441.2	6,592.7	0.76	-0.63	-0.42
13,921.0	88.50	264.90	6,930.5	1,584.1	-6,535.8	6,685.4	0.38	-0.21	-0.32
14,015.0	88.80	265.60	6,932.7	1,576.4	-6,629.4	6,777.3	0.81	0.32	0.74
14,110.0	90.30	265.10	6,933.4	1,568.7	-6,724.1	6,870.2	1.66	1.58	-0.53
14,205.0	89.60	264.00	6,933.5	1,559.6	-6,818.7	6,962.8	1.37	-0.74	-1.16
14,323.0	90.60	264.40	6,933.3	1,547.7	-6,936.1	7,077.7	0.91	0.85	0.34
14,417.0	90.00	262.20	6,932.8	1,536.7	-7,029.4	7,168.9	2.43	-0.64	-2.34
14,512.0	90.90	262.60	6,932.1	1,524.2	-7,123.6	7,260.6	1.04	0.95	0.42
14,607.0	90.20	260.10	6,931.1	1,509.9	-7,217.5	7,351.9	2.73	-0.74	-2.63
14,702.0	90.60	262.60	6,930.5	1,495.6	-7,311.4	7,443.2	2.66	0.42	2.63
14,797.0	90.50	261.50	6,929.6	1,482.5	-7,405.5	7,534.8	1.16	-0.11	-1.16
14,869.0	90.10	264.20	6,929.2	1,473.5	-7,476.9	7,604.5	3.79	-0.56	3.75
14,963.0	90.80	267.00	6,928.5	1,466.3	-7,570.6	7,696.5	3.07	0.74	2.98
15,058.0	89.50	267.50	6,928.2	1,461.7	-7,665.5	7,790.0	1.47	-1.37	0.53
15,153.0	90.00	268.40	6,928.6	1,458.3	-7,760.5	7,883.7	1.08	0.53	0.95
15,248.0	89.80	268.40	6,928.8	1,455.7	-7,855.4	7,977.5	0.21	-0.21	0.00
15,342.0	89.30	268.10	6,929.5	1,452.8	-7,949.4	8,070.3	0.62	-0.53	-0.32
15,437.0	90.10	269.10	6,930.0	1,450.5	-8,044.3	8,164.2	1.35	0.84	1.05
15,532.0	90.10	268.80	6,929.9	1,448.8	-8,139.3	8,258.2	0.32	0.00	-0.32
15,626.0	90.10	268.60	6,929.7	1,446.6	-8,233.3	8,351.1	0.21	0.00	-0.21
15,721.0	89.80	268.40	6,929.8	1,444.1	-8,328.3	8,444.9	0.38	-0.32	-0.21
15,816.0	88.70	267.90	6,931.0	1,441.1	-8,423.2	8,538.7	1.27	-1.16	-0.53
15,910.0	90.00	268.40	6,932.1	1,438.0	-8,517.2	8,631.5	1.48	1.38	0.53
16,005.0	89.40	268.10	6,932.6	1,435.1	-8,612.1	8,725.2	0.71	-0.63	-0.32
16,100.0	91.20	268.40	6,932.1	1,432.2	-8,707.1	8,819.0	1.92	1.89	0.32
16,195.0	90.70	268.10	6,930.5	1,429.3	-8,802.0	8,912.8	0.61	-0.53	-0.32
16,289.0	90.70	267.20	6,929.4	1,425.5	-8,895.9	9,005.4	0.96	0.00	-0.96
16,384.0	89.80	264.90	6,928.9	1,418.9	-8,990.7	9,098.6	2.60	-0.95	-2.42
16,479.0	89.60	267.20	6,929.4	1,412.4	-9,085.4	9,191.7	2.43	-0.21	2.42
16,574.0	90.40	265.80	6,929.4	1,406.6	-9,180.3	9,285.0	1.70	0.84	-1.47
16,669.0	90.40	268.60	6,928.8	1,402.0	-9,275.1	9,378.5	2.95	0.00	2.95
16,764.0	90.00	268.10	6,928.4	1,399.2	-9,370.1	9,472.3	0.67	-0.42	-0.53

<b>Company:</b>	Bayswater Exploration & Production, LLC	<b>Local Co-ordinate Reference:</b>	Well Ward O-20-19HN
<b>Project:</b>	SEC.20-T6N-R66W	<b>TVD Reference:</b>	WELL @ 4753.0ft (RKB - 25')
<b>Site:</b>	Ward 20-M Pad Sec. 20-T6N-R66W	<b>MD Reference:</b>	WELL @ 4753.0ft (RKB - 25')
<b>Well:</b>	Ward O-20-19HN	<b>North Reference:</b>	True
<b>Wellbore:</b>	Ward O-20-19HN Wellbore #1	<b>Survey Calculation Method:</b>	Minimum Curvature
<b>Design:</b>	Ward O-20-19HN Wellbore #1	<b>Database:</b>	US_EDM

Survey										
Measured Depth (ft)	Inclination (°)	Azimuth (°)	Vertical Depth (ft)	+N/-S (ft)	+E/-W (ft)	Vertical Section (ft)	Dogleg Rate (°/100usft)	Build Rate (°/100usft)	Turn Rate (°/100usft)	
16,858.0	91.10	268.90	6,927.5	1,396.8	-9,464.1	9,565.1	1.45	1.17	0.85	
16,953.0	90.80	268.20	6,926.0	1,394.4	-9,559.0	9,659.0	0.80	-0.32	-0.74	
17,048.0	91.10	268.10	6,924.4	1,391.3	-9,654.0	9,752.7	0.33	0.32	-0.11	
17,143.0	90.60	265.80	6,923.0	1,386.2	-9,748.8	9,846.2	2.48	-0.53	-2.42	
17,238.0	90.70	268.60	6,921.9	1,381.6	-9,843.7	9,939.6	2.95	0.11	2.95	
17,333.0	91.30	269.50	6,920.2	1,380.0	-9,938.6	10,033.6	1.14	0.63	0.95	
17,427.0	89.60	269.60	6,919.5	1,379.3	-10,032.6	10,126.7	1.81	-1.81	0.11	
17,522.0	89.40	269.10	6,920.3	1,378.2	-10,127.6	10,220.8	0.57	-0.21	-0.53	
17,617.0	89.30	268.80	6,921.4	1,376.5	-10,222.6	10,314.7	0.33	-0.11	-0.32	
17,712.0	89.00	268.40	6,922.8	1,374.1	-10,317.6	10,408.6	0.53	-0.32	-0.42	
17,807.0	88.70	267.90	6,924.7	1,371.1	-10,412.5	10,502.4	0.61	-0.32	-0.53	
17,873.0	88.70	267.90	6,926.2	1,368.7	-10,478.4	10,567.4	0.00	0.00	0.00	

Design Targets										
Target Name	Dip Angle (°)	Dip Dir. (°)	TVD (ft)	+N/-S (ft)	+E/-W (ft)	Northing (usft)	Easting (usft)	Latitude	Longitude	
SHL 394'FSL, 213'FEL, S - hit/miss target - Shape - Point	0.00	0.00	1.0	0.0	0.0	1,413,927.17	3,196,665.34	40.467480	-104.793156	
BHL 2076'FSL, 470'FWL - survey misses target center by 8.2ft at 17869.5ft MD (6926.2 TVD, 1368.8 N, -10474.9 E) - Point	0.00	0.00	6,923.0	1,361.2	-10,474.7	1,415,204.70	3,186,180.48	40.471210	-104.830804	
Boreline Vertex 2083'FS - survey misses target center by 51.2ft at 15242.4ft MD (6928.8 TVD, 1455.8 N, -7849.9 E) - Point	0.00	0.00	6,929.0	1,507.0	-7,851.3	1,415,371.45	3,188,802.59	40.471613	-104.821375	
Boreline Vertex 2131'FS - survey misses target center by 17.6ft at 12486.5ft MD (6937.3 TVD, 1611.4 N, -5103.0 E) - Point	0.00	0.00	6,940.0	1,628.7	-5,103.8	1,415,515.03	3,191,548.95	40.471949	-104.811500	

Checked By: _____	Approved By: _____	Date: _____
-------------------	--------------------	-------------