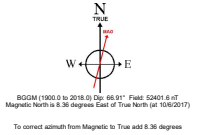
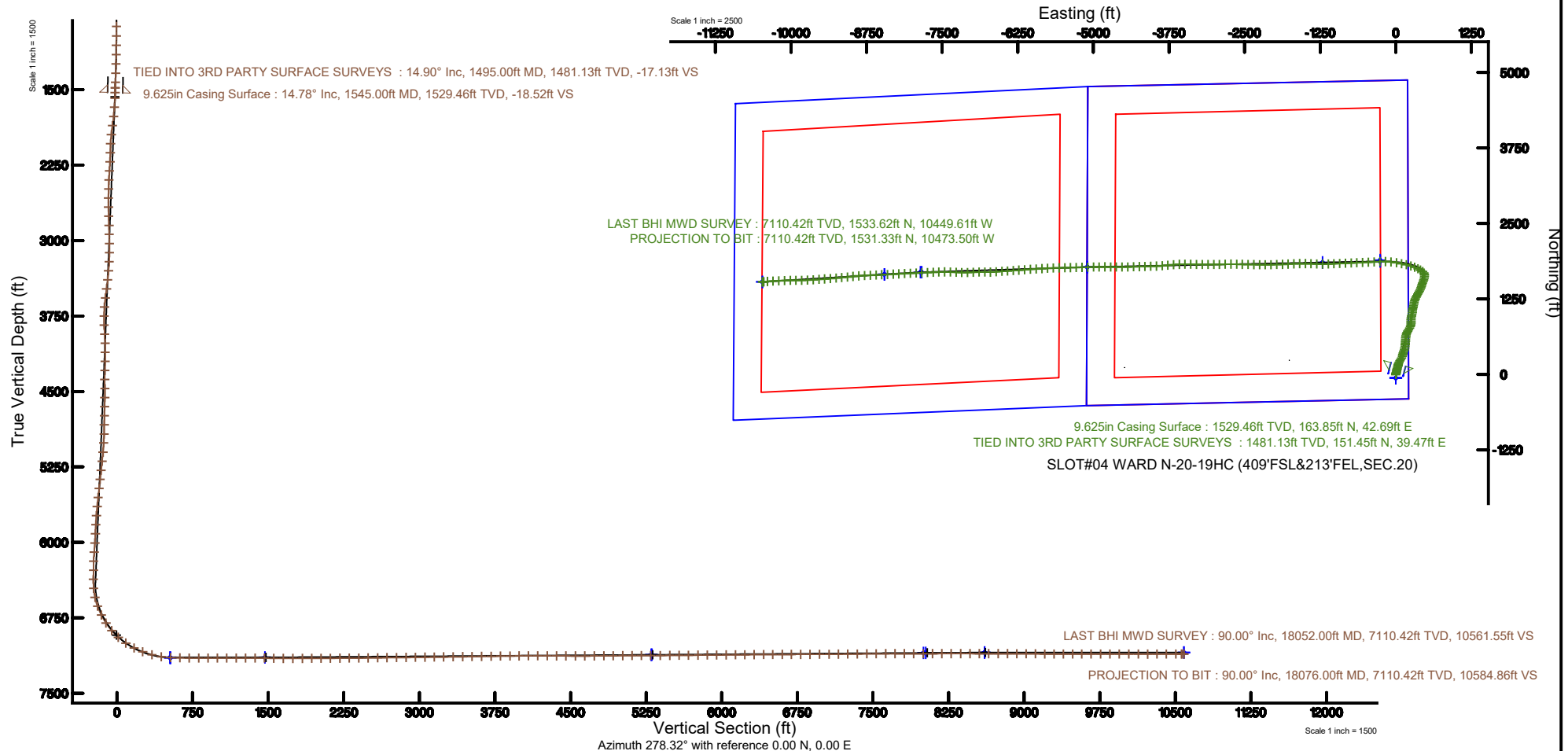


BAYSWATER E & P LLC

Location: COLORADO Slot: SLOT#04 WARD N-20-19HC (409'FSL&213'FEL,SEC.20)
 Field: WELD COUNTY (NAD83/TRUE NORTH) Well: WARD N-20-19HC
 Facility: SEC.20-T06N-R66W Wellbore: WARD N-20-19HC PWB



Plot reference wellpath is WARD N-20-19HC (REV-A.0) PWP	Grid System: NAD83 / Lambert Colorado SP, Northern Zone (501), US feet
True vertical depths are referenced to True 38 (25'KB) (RKB)	* = Wellpath was transformed from a different geodetic datum
Measured depths are referenced to True 38 (25'KB) (RKB)	North Reference: True north
True 38 (25'KB) (RKB) to Mean Sea Level: 4753 feet	Scale: True distance
Mean Sea Level to Ground level (At Slot: SLOT#04 WARD N-20-19HC (409'FSL&213'FEL,SEC.20)): 0 feet	Depths are in feet
Coordinates are in feet referenced to Slot	Created by: doddanna on 2017-11-28
	Database: Denver DB



Actual Wellpath Report

WARD N-20-19HC AWP

Page 1 of 7



REFERENCE WELLPATH IDENTIFICATION

Operator	BAYSWATER E & P LLC	Slot	SLOT#04 WARD N-20-19HC (409'FSL&213'FEL,SEC.20)
Area	COLORADO	Well	WARD N-20-19HC
Field	WELD COUNTY (NAD83/TRUE NORTH)	Wellbore	WARD N-20-19HC AWB
Facility	SEC.20-T06N-R66W		

REPORT SETUP INFORMATION

Projection System	NAD83 / Lambert Colorado SP, Northern Zone (501), US feet	Software System	WellArchitect® 5.0
North Reference	True	User	Doddanna
Scale	0.999964	Report Generated	11/28/2017 at 10:47:24 AM
Convergence at slot	0.46° East	Database/Source file	Denver DB/WARD_N-20-19HC_AWP.xml

WELLPATH LOCATION

	Local coordinates		Grid coordinates		Geographic coordinates	
	North[ft]	East[ft]	Easting[US ft]	Northing[US ft]	Latitude	Longitude
Slot Location	-111.72	4484.67	3196665.19	1413942.14	40°28'03.076"N	104°47'35.362"W
Facility Reference Pt			3192179.96	1414018.92	40°28'04.184"N	104°48'33.386"W
Field Reference Pt			3174587.00	1430859.71	40°30'51.890"N	104°52'19.470"W

WELLPATH DATUM

Calculation method	Minimum curvature	True 38 (25'KB) (RKB) to Facility Vertical Datum	4753.00ft
Horizontal Reference Pt	Slot	True 38 (25'KB) (RKB) to Mean Sea Level	4753.00ft
Vertical Reference Pt	True 38 (25'KB) (RKB)	True 38 (25'KB) (RKB) to Ground Level at Slot (SLOT#04 WARD N-20-19HC (409'FSL&213'FEL,SEC.20))	4753.00ft
MD Reference Pt	True 38 (25'KB) (RKB)	Section Origin	N 0.00, E 0.00 ft
Field Vertical Reference	Mean Sea Level	Section Azimuth	278.32°

Actual Wellpath Report

WARD N-20-19HC AWP

Page 2 of 7



REFERENCE WELLPATH IDENTIFICATION			
Operator	BAYSWATER E & P LLC	Slot	SLOT#04 WARD N-20-19HC (409'FSL&213'FEL,SEC.20)
Area	COLORADO	Well	WARD N-20-19HC
Field	WELD COUNTY (NAD83/TRUE NORTH)	Wellbore	WARD N-20-19HC AWB
Facility	SEC.20-T06N-R66W		

WELLPATH DATA (193 stations)								
MD [ft]	Inclination [°]	Azimuth [°]	TVD [ft]	Vert Sect [ft]	North [ft]	East [ft]	DLS [°/100ft]	Comments
0.00	0.000	7.600	0.00	0.00	0.00	0.00	0.00	
100.00	0.000	0.000	100.00	0.00	0.00	0.00	0.00	
210.00	0.500	7.600	210.00	0.01	0.48	0.06	0.45	
304.00	0.700	20.000	303.99	-0.11	1.42	0.31	0.25	
399.00	1.200	8.100	398.98	-0.22	2.95	0.65	0.56	
494.00	1.800	14.100	493.95	-0.37	5.38	1.16	0.65	
589.00	3.100	15.500	588.86	-0.84	9.31	2.21	1.37	
683.00	4.500	17.200	682.65	-1.72	15.28	3.98	1.49	
778.00	6.200	19.000	777.23	-3.25	23.69	6.75	1.80	
873.00	7.100	12.800	871.59	-4.66	34.27	9.72	1.21	
968.00	8.100	10.700	965.76	-5.40	46.57	12.26	1.09	
1063.00	9.400	12.800	1059.65	-6.28	60.71	15.22	1.41	
1157.00	11.000	12.100	1152.16	-7.47	76.97	18.81	1.71	
1252.00	12.400	15.300	1245.19	-9.31	95.67	23.40	1.62	
1347.00	13.700	17.000	1337.73	-12.25	116.26	29.38	1.43	
1440.00	14.500	16.200	1427.93	-15.51	137.98	35.85	0.89	
1495.00	14.900	13.900	1481.13	-17.14	151.45	39.47	1.29	TIED INTO 3RD PARTY SURFACE SURVEYS
1601.00	14.650	16.840	1583.63	-20.45	177.51	46.62	0.75	
1696.00	15.120	21.880	1675.44	-25.14	200.51	54.72	1.45	
1791.00	16.170	29.200	1766.93	-32.76	223.56	65.79	2.35	
1885.00	17.720	35.800	1856.85	-44.03	246.59	80.55	2.63	
1980.00	18.350	28.940	1947.20	-55.97	271.40	96.24	2.33	
2075.00	18.410	16.570	2037.38	-63.39	298.88	107.76	4.10	
2169.00	17.350	9.160	2126.86	-65.73	326.95	114.23	2.67	
2264.00	17.240	19.600	2217.58	-68.69	354.20	121.21	3.26	
2359.00	17.740	21.080	2308.19	-74.64	380.97	131.14	0.70	
2454.00	17.810	16.780	2398.66	-79.98	408.38	140.54	1.38	
2548.00	17.760	11.240	2488.17	-82.82	436.21	147.48	1.80	
2643.00	17.830	9.710	2578.63	-83.91	464.76	152.76	0.50	
2737.00	17.740	6.100	2668.14	-83.71	493.18	156.71	1.18	
2832.00	17.710	1.690	2758.63	-81.48	522.02	158.67	1.41	
2927.00	17.770	3.760	2849.12	-78.66	550.93	160.05	0.67	
3021.00	17.800	3.920	2938.62	-76.42	579.58	161.97	0.06	
3116.00	17.660	4.240	3029.11	-74.28	608.43	164.03	0.18	
3211.00	17.760	12.440	3119.62	-74.30	636.96	168.22	2.63	
3306.00	17.660	18.280	3210.13	-77.83	664.79	175.86	1.87	
3400.00	18.030	21.330	3299.61	-83.57	691.88	185.62	1.07	
3495.00	17.530	30.020	3390.09	-92.18	717.97	198.13	2.84	
3589.00	17.940	33.050	3479.62	-103.47	742.36	213.11	1.07	
3684.00	17.880	30.810	3570.02	-115.17	767.15	228.56	0.73	
3779.00	18.100	20.270	3660.40	-123.80	793.53	241.14	3.43	
3874.00	18.140	11.020	3750.71	-127.56	821.89	249.08	3.03	
3969.00	18.320	1.560	3840.96	-126.50	851.34	252.32	3.12	
4063.00	17.860	355.930	3930.32	-121.67	880.49	251.70	1.92	
4158.00	17.840	3.210	4020.76	-117.25	909.55	251.48	2.35	

Actual Wellpath Report

WARD N-20-19HC AWP

Page 3 of 7



REFERENCE WELLPATH IDENTIFICATION			
Operator	BAYSWATER E & P LLC	Slot	SLOT#04 WARD N-20-19HC (409'FSL&213'FEL,SEC.20)
Area	COLORADO	Well	WARD N-20-19HC
Field	WELD COUNTY (NAD83/TRUE NORTH)	Wellbore	WARD N-20-19HC AWB
Facility	SEC.20-T06N-R66W		

WELLPATH DATA (193 stations)								
MD [ft]	Inclination [°]	Azimuth [°]	TVD [ft]	Vert Sect [ft]	North [ft]	East [ft]	DLS [°/100ft]	Comments
4253.00	17.960	10.680	4111.17	-116.55	938.48	255.01	2.42	
4347.00	17.840	11.550	4200.62	-117.96	966.83	260.58	0.31	
4442.00	17.800	13.370	4291.06	-120.06	995.21	266.85	0.59	
4537.00	17.970	8.100	4381.48	-121.28	1023.85	272.27	1.71	
4631.00	17.850	5.900	4470.92	-120.62	1052.53	275.79	0.73	
4726.00	17.830	11.240	4561.36	-120.75	1081.28	280.13	1.72	
4821.00	18.170	13.290	4651.71	-122.77	1109.97	286.37	0.76	
4916.00	18.070	11.090	4742.00	-124.77	1138.84	292.61	0.73	
5011.00	18.160	10.920	4832.29	-126.15	1167.83	298.24	0.11	
5106.00	18.170	13.340	4922.56	-128.12	1196.78	304.47	0.79	
5200.00	17.450	18.840	5012.06	-131.98	1224.39	312.40	1.95	
5295.00	17.840	23.920	5102.60	-138.49	1251.17	322.90	1.67	
5390.00	18.050	27.340	5192.98	-147.21	1277.55	335.56	1.13	
5485.00	17.700	27.260	5283.39	-156.69	1303.46	348.94	0.37	
5579.00	17.750	29.830	5372.93	-166.58	1328.59	362.61	0.83	
5674.00	17.820	30.420	5463.39	-177.36	1353.69	377.17	0.20	
5769.00	17.480	26.780	5553.92	-187.35	1378.96	390.96	1.22	
5864.00	17.940	23.890	5644.42	-195.80	1405.08	403.31	1.04	
5959.00	17.870	24.170	5734.82	-203.71	1431.75	415.21	0.12	
6053.00	17.800	17.420	5824.31	-209.92	1458.62	425.42	2.20	
6148.00	17.570	14.370	5914.83	-213.73	1486.37	433.32	1.00	
6243.00	17.010	22.140	6005.54	-218.56	1513.13	442.12	2.50	
6338.00	18.300	23.640	6096.07	-225.82	1539.67	453.34	1.44	
6433.00	18.030	14.930	6186.35	-231.45	1567.54	463.11	2.87	
6528.00	17.440	7.930	6276.85	-233.05	1595.85	468.86	2.33	
6622.00	17.880	11.800	6366.42	-233.83	1623.93	473.75	1.33	
6717.00	17.370	354.370	6457.02	-231.30	1652.34	475.35	5.56	
6812.00	19.560	331.370	6547.25	-218.30	1680.45	466.32	7.95	
6906.00	22.800	307.600	6635.05	-192.90	1705.43	444.31	9.69	
7002.00	28.010	296.400	6721.78	-155.20	1726.83	409.33	7.36	
7096.00	35.060	297.390	6801.85	-108.65	1749.09	365.54	7.52	
7191.00	41.230	293.090	6876.54	-52.52	1773.95	312.45	7.07	
7286.00	49.330	286.210	6943.37	13.59	1796.33	248.91	9.95	
7381.00	55.850	283.830	7001.06	88.49	1815.81	176.06	7.14	
7476.00	62.550	282.900	7049.68	169.73	1834.64	96.71	7.10	
7570.00	70.180	279.460	7087.34	255.66	1851.25	12.29	8.78	
7665.00	74.420	276.200	7116.23	346.12	1863.54	-77.33	5.53	
7760.00	80.910	270.630	7136.53	438.50	1869.01	-169.89	8.91	
7854.00	88.310	267.620	7145.35	530.80	1867.57	-263.39	8.49	
7949.00	88.890	266.840	7147.67	624.00	1862.98	-358.25	1.02	
8044.00	89.780	267.150	7148.78	717.14	1858.00	-453.11	0.99	
8139.00	89.720	267.550	7149.19	810.41	1853.60	-548.01	0.43	
8234.00	89.690	267.400	7149.68	903.71	1849.42	-642.91	0.16	
8329.00	90.090	267.850	7149.86	997.06	1845.48	-737.83	0.63	
8423.00	90.030	267.960	7149.76	1089.51	1842.05	-831.77	0.13	

Actual Wellpath Report

WARD N-20-19HC AWP

Page 4 of 7



REFERENCE WELLPATH IDENTIFICATION			
Operator	BAYSWATER E & P LLC	Slot	SLOT#04 WARD N-20-19HC (409'FSL&213'FEL,SEC.20)
Area	COLORADO	Well	WARD N-20-19HC
Field	WELD COUNTY (NAD83/TRUE NORTH)	Wellbore	WARD N-20-19HC AWB
Facility	SEC.20-T06N-R66W		

WELLPATH DATA (193 stations)								
MD [ft]	Inclination [°]	Azimuth [°]	TVD [ft]	Vert Sect [ft]	North [ft]	East [ft]	DLS [°/100ft]	Comments
8518.00	90.030	267.300	7149.71	1182.86	1838.12	-926.69	0.69	
8613.00	90.090	266.900	7149.62	1276.05	1833.31	-1021.56	0.43	
8708.00	90.060	267.790	7149.49	1369.31	1828.91	-1116.46	0.94	
8802.00	88.860	269.600	7150.38	1461.98	1826.77	-1210.43	2.31	
8897.00	88.800	272.070	7152.32	1556.14	1828.15	-1305.39	2.60	
8992.00	90.090	272.400	7153.24	1650.60	1831.86	-1400.31	1.40	
9087.00	90.060	271.140	7153.11	1744.98	1834.79	-1495.26	1.33	
9182.00	90.000	268.910	7153.06	1838.98	1834.83	-1590.26	2.35	
9276.00	90.220	267.180	7152.88	1931.47	1831.63	-1684.20	1.86	
9371.00	90.490	267.190	7152.29	2024.68	1826.96	-1779.08	0.28	
9466.00	90.520	267.750	7151.46	2117.97	1822.77	-1873.99	0.59	
9561.00	90.400	268.530	7150.69	2211.48	1819.68	-1968.93	0.83	
9655.00	90.430	269.230	7150.01	2304.20	1817.85	-2062.91	0.75	
9750.00	90.550	269.500	7149.20	2398.04	1816.79	-2157.90	0.31	
9845.00	90.830	271.130	7148.06	2492.10	1817.32	-2252.89	1.74	
9939.00	90.650	271.170	7146.84	2585.36	1819.20	-2346.86	0.20	
10034.00	90.740	270.500	7145.69	2679.54	1820.59	-2441.85	0.71	
10129.00	90.710	271.940	7144.49	2773.81	1822.61	-2536.81	1.52	
10223.00	90.680	271.870	7143.35	2867.21	1825.73	-2630.75	0.08	
10318.00	90.740	269.450	7142.17	2961.35	1826.83	-2725.73	2.55	
10413.00	90.680	267.950	7140.99	3055.00	1824.67	-2820.70	1.58	
10508.00	90.800	268.390	7139.77	3148.51	1821.64	-2915.64	0.48	
10602.00	90.680	269.950	7138.55	3241.30	1820.28	-3009.62	1.66	
10697.00	90.740	269.460	7137.37	3335.22	1819.79	-3104.61	0.52	
10792.00	90.800	270.410	7136.10	3429.20	1819.68	-3199.60	1.00	
10887.00	90.950	271.800	7134.65	3523.43	1821.51	-3294.57	1.47	
10982.00	90.920	271.250	7133.10	3617.75	1824.04	-3389.53	0.58	
11077.00	90.770	269.690	7131.70	3711.85	1824.82	-3484.51	1.65	
11172.00	90.770	268.090	7130.42	3805.56	1822.98	-3579.48	1.68	
11267.00	90.740	264.860	7129.17	3898.51	1817.14	-3674.28	3.40	
11361.00	90.460	263.720	7128.18	3989.70	1807.79	-3767.81	1.25	
11456.00	90.150	265.020	7127.68	4081.90	1798.47	-3862.34	1.41	
11551.00	89.880	268.720	7127.65	4174.99	1793.28	-3957.19	3.91	
11646.00	89.850	268.790	7127.88	4268.67	1791.22	-4052.16	0.08	
11741.00	89.880	267.990	7128.10	4362.25	1788.55	-4147.13	0.84	
11835.00	89.880	268.390	7128.30	4454.78	1785.58	-4241.08	0.43	
11930.00	89.970	267.970	7128.42	4548.30	1782.56	-4336.03	0.45	
12025.00	89.970	268.670	7128.47	4641.86	1779.78	-4430.99	0.74	
12120.00	90.490	270.160	7128.09	4735.71	1778.81	-4525.98	1.66	
12215.00	90.550	270.220	7127.23	4829.75	1779.12	-4620.98	0.09	
12309.00	90.550	270.860	7126.32	4922.88	1780.01	-4714.97	0.68	
12404.00	90.340	270.190	7125.59	5017.00	1780.88	-4809.96	0.74	
12498.00	90.310	269.160	7125.05	5109.93	1780.35	-4903.95	1.10	
12593.00	90.250	268.070	7124.59	5203.57	1778.05	-4998.92	1.15	
12687.00	90.310	268.600	7124.13	5296.14	1775.32	-5092.88	0.57	

Actual Wellpath Report

WARD N-20-19HC AWP

Page 5 of 7



REFERENCE WELLPATH IDENTIFICATION

Operator	BAYSWATER E & P LLC	Slot	SLOT#04 WARD N-20-19HC (409'FSL&213'FEL,SEC.20)
Area	COLORADO	Well	WARD N-20-19HC
Field	WELD COUNTY (NAD83/TRUE NORTH)	Wellbore	WARD N-20-19HC AWB
Facility	SEC.20-T06N-R66W		

WELLPATH DATA (193 stations)

MD [ft]	Inclination [°]	Azimuth [°]	TVD [ft]	Vert Sect [ft]	North [ft]	East [ft]	DLS [°/100ft]	Comments
12782.00	90.180	268.950	7123.72	5389.83	1773.29	-5187.86	0.39	
12877.00	90.520	268.710	7123.14	5483.53	1771.35	-5282.84	0.44	
12972.00	90.430	268.580	7122.36	5577.17	1769.10	-5377.81	0.17	
13066.00	90.430	268.340	7121.65	5669.78	1766.58	-5471.77	0.26	
13161.00	90.800	269.040	7120.63	5763.44	1764.40	-5566.74	0.83	
13256.00	90.400	267.700	7119.64	5857.00	1761.70	-5661.69	1.47	
13351.00	90.400	266.900	7118.97	5950.25	1757.23	-5756.59	0.84	
13446.00	90.520	267.100	7118.21	6043.40	1752.26	-5851.45	0.25	
13541.00	90.580	266.700	7117.30	6136.51	1747.12	-5946.31	0.43	
13636.00	90.520	266.150	7116.39	6229.47	1741.20	-6041.12	0.58	
13731.00	90.520	265.340	7115.52	6322.18	1734.15	-6135.85	0.85	
13826.00	90.370	265.610	7114.79	6414.80	1726.65	-6230.55	0.33	
13920.00	90.400	265.770	7114.15	6506.53	1719.59	-6324.29	0.17	
14015.00	90.250	266.840	7113.62	6599.45	1713.47	-6419.09	1.14	
14109.00	90.090	265.680	7113.34	6691.37	1707.33	-6512.88	1.25	
14204.00	90.000	264.720	7113.26	6783.89	1699.39	-6607.55	1.01	
14298.00	90.220	268.870	7113.08	6875.97	1694.13	-6701.38	4.42	
14393.00	90.430	271.770	7112.54	6970.04	1694.66	-6796.37	3.06	
14488.00	90.430	269.210	7111.83	7064.14	1695.47	-6891.35	2.69	
14582.00	90.620	267.040	7110.97	7156.65	1692.40	-6985.29	2.32	
14677.00	90.650	268.430	7109.92	7250.03	1688.64	-7080.21	1.46	
14772.00	90.550	270.940	7108.92	7343.94	1688.12	-7175.20	2.64	
14867.00	90.680	273.060	7107.90	7438.35	1691.44	-7270.13	2.24	
14961.00	90.620	272.510	7106.83	7531.90	1696.00	-7364.01	0.59	
15056.00	90.400	269.300	7105.99	7626.09	1697.50	-7458.98	3.39	
15151.00	89.780	267.360	7105.84	7719.65	1694.74	-7553.94	2.14	
15245.00	89.850	267.740	7106.14	7811.99	1690.72	-7647.85	0.41	
15339.00	90.000	267.870	7106.27	7904.41	1687.12	-7741.78	0.21	
15434.00	90.090	267.120	7106.19	7997.72	1682.97	-7836.69	0.80	
15529.00	90.180	267.270	7105.97	8090.94	1678.32	-7931.58	0.18	
15624.00	90.150	267.330	7105.69	8184.19	1673.84	-8026.47	0.07	
15718.00	90.090	267.130	7105.50	8276.43	1669.30	-8120.36	0.22	
15813.00	89.880	267.490	7105.52	8369.68	1664.84	-8215.26	0.44	
15908.00	89.850	266.230	7105.75	8462.79	1659.64	-8310.11	1.33	
16003.00	89.940	268.120	7105.92	8555.99	1654.95	-8404.99	1.99	
16097.00	90.000	267.540	7105.97	8648.42	1651.40	-8498.92	0.62	
16192.00	89.910	267.140	7106.04	8741.68	1646.99	-8593.82	0.43	
16287.00	89.970	266.910	7106.14	8834.84	1642.06	-8688.69	0.25	
16382.00	89.940	267.230	7106.22	8928.02	1637.20	-8783.57	0.34	
16477.00	89.350	265.520	7106.81	9020.96	1631.19	-8878.37	1.90	
16572.00	89.350	264.040	7107.88	9113.31	1622.55	-8972.97	1.56	
16667.00	89.480	264.090	7108.85	9205.38	1612.73	-9067.46	0.15	
16760.00	89.480	265.640	7109.70	9295.82	1604.41	-9160.08	1.67	
16855.00	90.000	264.950	7110.13	9388.38	1596.61	-9254.75	0.91	
16950.00	90.030	265.440	7110.10	9480.89	1588.66	-9349.42	0.52	

Actual Wellpath Report

WARD N-20-19HC AWP

Page 6 of 7



REFERENCE WELLPATH IDENTIFICATION			
Operator	BAYSWATER E & P LLC	Slot	SLOT#04 WARD N-20-19HC (409'FSL&213'FEL, SEC.20)
Area	COLORADO	Well	WARD N-20-19HC
Field	WELD COUNTY (NAD83/TRUE NORTH)	Wellbore	WARD N-20-19HC AWB
Facility	SEC.20-T06N-R66W		

WELLPATH DATA (193 stations)								
MD [ft]	Inclination [°]	Azimuth [°]	TVD [ft]	Vert Sect [ft]	North [ft]	East [ft]	DLS [°/100ft]	Comments
17044.00	89.970	265.180	7110.10	9572.48	1580.97	-9443.10	0.28	
17139.00	89.940	265.520	7110.18	9665.06	1573.27	-9537.79	0.36	
17234.00	90.000	266.080	7110.23	9757.80	1566.31	-9632.54	0.59	
17329.00	90.000	267.300	7110.23	9850.85	1560.83	-9727.38	1.28	
17424.00	90.120	270.000	7110.13	9944.49	1558.59	-9822.34	2.84	
17519.00	89.970	269.700	7110.05	10038.45	1558.34	-9917.34	0.35	
17614.00	89.690	268.830	7110.34	10132.27	1557.12	-10012.33	0.96	
17708.00	90.150	268.050	7110.47	10224.87	1554.56	-10106.29	0.96	
17803.00	90.000	267.140	7110.34	10318.21	1550.58	-10201.21	0.97	
17898.00	90.000	266.560	7110.34	10411.32	1545.36	-10296.07	0.61	
17993.00	89.940	265.470	7110.39	10504.13	1538.75	-10390.83	1.15	
18052.00	90.000	264.540	7110.42	10561.55	1533.62	-10449.61	1.58	LAST BHI MWD SURVEY
18076.00	90.000	264.540	7110.42	10584.86	1531.33	-10473.50	0.00	PROJECTION TO BIT

HOLE & CASING SECTIONS - Ref Wellbore: WARD N-20-19HC AWB Ref Wellpath: WARD N-20-19HC AWP									
String/Diameter	Start MD [ft]	End MD [ft]	Interval [ft]	Start TVD [ft]	End TVD [ft]	Start N/S [ft]	Start E/W [ft]	End N/S [ft]	End E/W [ft]
9.625in Casing Surface	25.00	1545.00	1520.00	25.00	1529.46	0.00	0.00	163.85	42.69
8.5in Open Hole	1545.00	18076.00	16531.00	1529.46	7110.42	163.85	42.69	1531.33	-10473.50

WELLPATH COMPOSITION - Ref Wellbore: WARD N-20-19HC AWB Ref Wellpath: WARD N-20-19HC AWP				
Start MD [ft]	End MD [ft]	Positional Uncertainty Model	Log Name/Comment	Wellbore
0.00	1495.00	ISCWSA MWD, Rev. 4 (Standard)	3rd Pary Surface Surveys <100'-1495'>	WARD N-20-19HC AWB
1495.00	18052.00	Custom BHI AutoTrak Curve (Short) (Rockies 0.03Gt model)	8 1/2" BHI AUTOTRAK CURVE (SHORT) <1601'-18052'>	WARD N-20-19HC AWB
18052.00	18076.00	Blind Drilling (std)	Projection to bit	WARD N-20-19HC AWB

Actual Wellpath Report

WARD N-20-19HC AWP

Page 7 of 7



REFERENCE WELLPATH IDENTIFICATION			
Operator	BAYSWATER E & P LLC	Slot	SLOT#04 WARD N-20-19HC (409'FSL&213'FEL,SEC.20)
Area	COLORADO	Well	WARD N-20-19HC
Field	WELD COUNTY (NAD83/TRUE NORTH)	Wellbore	WARD N-20-19HC AWB
Facility	SEC.20-T06N-R66W		

WELLPATH COMMENTS				
MD [ft]	Inclination [°]	Azimuth [°]	TVD [ft]	Comment
1495.00	14.900	13.900	1481.13	TIED INTO 3RD PARTY SURFACE SURVEYS
18052.00	90.000	264.540	7110.42	LAST BHI MWD SURVEY
18076.00	90.000	264.540	7110.42	PROJECTION TO BIT