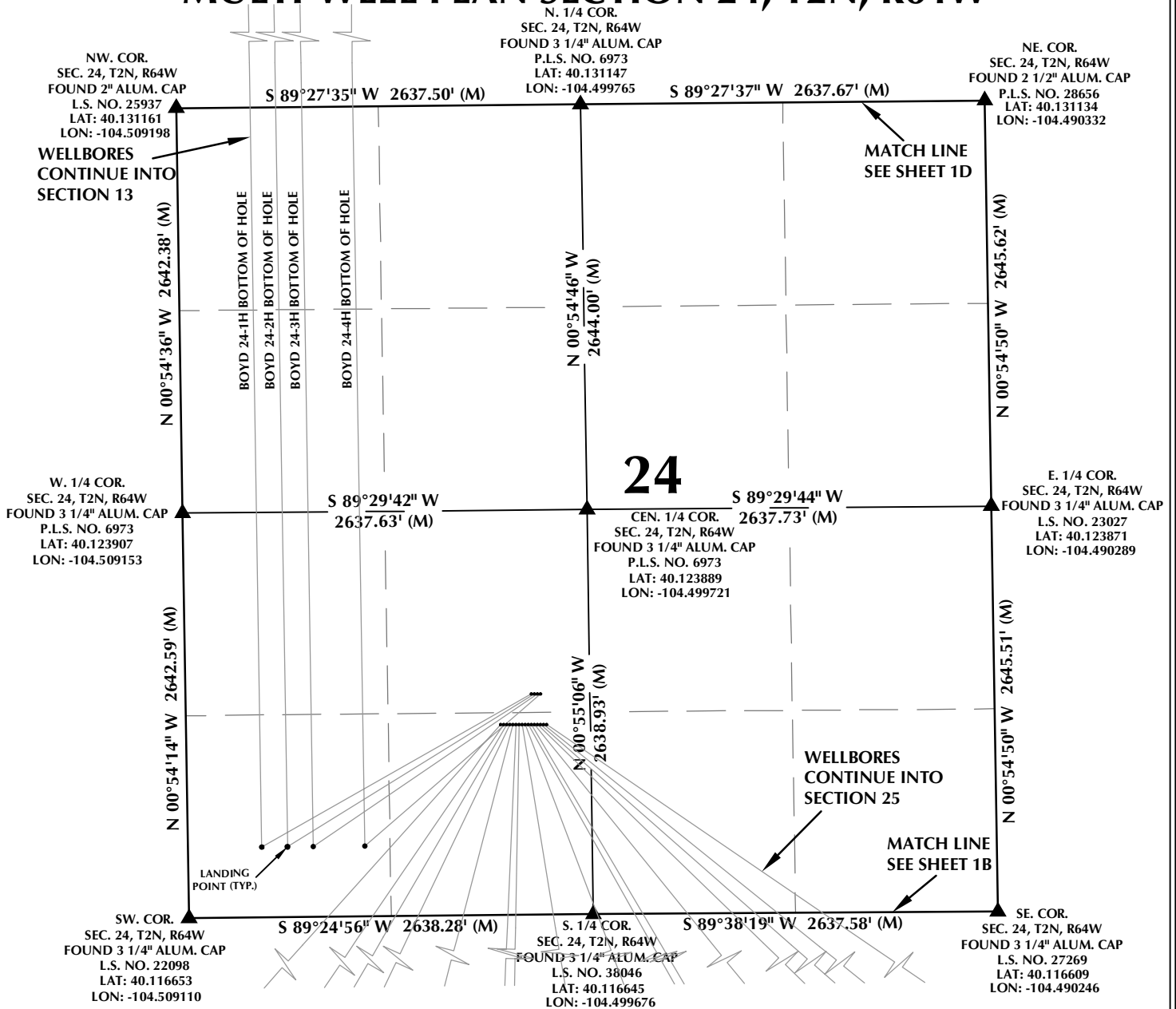
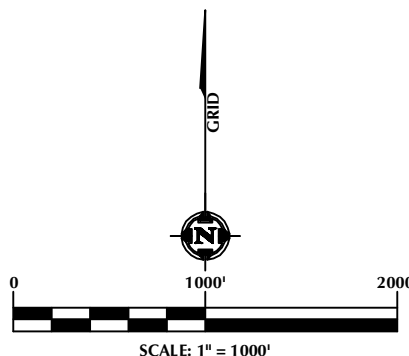


MULTI-WELL PLAN SECTION 24, T2N, R64W



NOTES:

- ▲ INDICATES SECTION CORNER
 - INDICATES CALCULATED CORNER
 - BASIS OF BEARING DERIVED FROM COLORADO COORDINATE SYSTEM OF 1983 NORTH ZONE.
 - ALL MEASURED DISTANCES ARE GRID.
- COMBINED SCALE FACTOR: .99972739 CALCULATED FROM THE C. 1/4 CORNER OF SECTION 24, T2N, R64W.
- WELL FOOTAGES ARE MEASURED AT RIGHT ANGLES TO THE SECTION LINES.



WELL PAD - ARNOLD 02N-64W-24

MULTI-WELL PLAN

BOYD 24-1H, BOYD 24-2H, BOYD 24-3H, BOYD 24-4H, HELEN 24-3H, HELEN 24-4H, HELEN 24-5H, HELEN 24-6H, HELEN 24-7H, HELEN 24-8H, HELEN 24-9H, HELEN 24-10H, HELEN 24-11H, HELEN 24-12H, HELEN 24-13H, HELEN 24-14H, HELEN 24-15H, HELEN 24-16H, HELEN 24-17H & HELEN 24-18H LOCATED IN SECTIONS 13, 24, 25 & 36, T2N, R64W, 6TH P.M. WELD COUNTY, COLORADO



5950 Cedar Springs Road, Suite 200
Dallas, Texas 75235



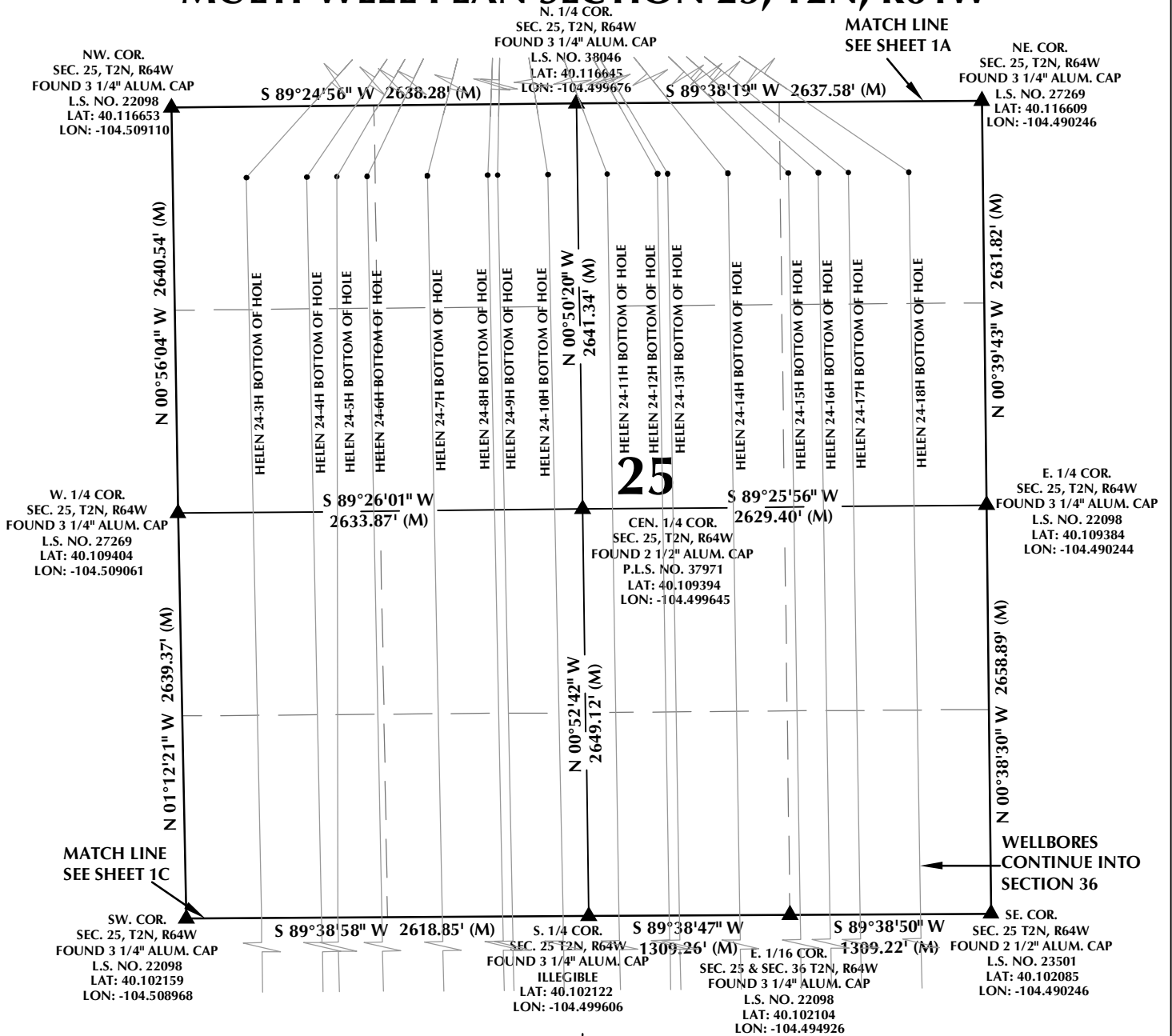
CONSULTING, LLC

SHERIDAN OFFICE
1095 Saberton Avenue
Sheridan, Wyoming 82801
Phone 307-674-0609

LOVELAND OFFICE
1635 Foxtrail Drive, Suite 204
Loveland, Colorado 80538
Phone 970-776-4331

DRAFTED BY:	GLK	CHECKED BY:	JRS	SHEET NO: 1A 1A OF 2
DATE DRAFTED:	10/30/17	DATE SURVEYED:	9/29/17	
REVISED:	11/6/17	FILE NAME:	17-138	

MULTI-WELL PLAN SECTION 25, T2N, R64W



NOTES:

- ▲ INDICATES SECTION CORNER
- INDICATES CALCULATED CORNER
- BASIS OF BEARING DERIVED FROM COLORADO COORDINATE SYSTEM OF 1983 NORTH ZONE.
- ALL MEASURED DISTANCES ARE GRID.
- COMBINED SCALE FACTOR: .99972739 CALCULATED FROM THE C. 1/4 CORNER OF SECTION 24, T2N, R64W.
- WELL FOOTAGES ARE MEASURED AT RIGHT ANGLES TO THE SECTION LINES.

WELL PAD - ARNOLD 02N-64W-24

MULTI-WELL PLAN

BOYD 24-1H, BOYD 24-2H, BOYD 24-3H, BOYD 24-4H, HELEN 24-3H, HELEN 24-4H, HELEN 24-5H, HELEN 24-6H, HELEN 24-7H, HELEN 24-8H, HELEN 24-9H, HELEN 24-10H, HELEN 24-11H, HELEN 24-12H, HELEN 24-13H, HELEN 24-14H, HELEN 24-15H, HELEN 24-16H, HELEN 24-17H & HELEN 24-18H LOCATED IN SECTIONS 13, 24, 25 & 36, T2N, R64W, 6TH P.M. WELD COUNTY, COLORADO



5950 Cedar Springs Road, Suite 200
Dallas, Texas 75235



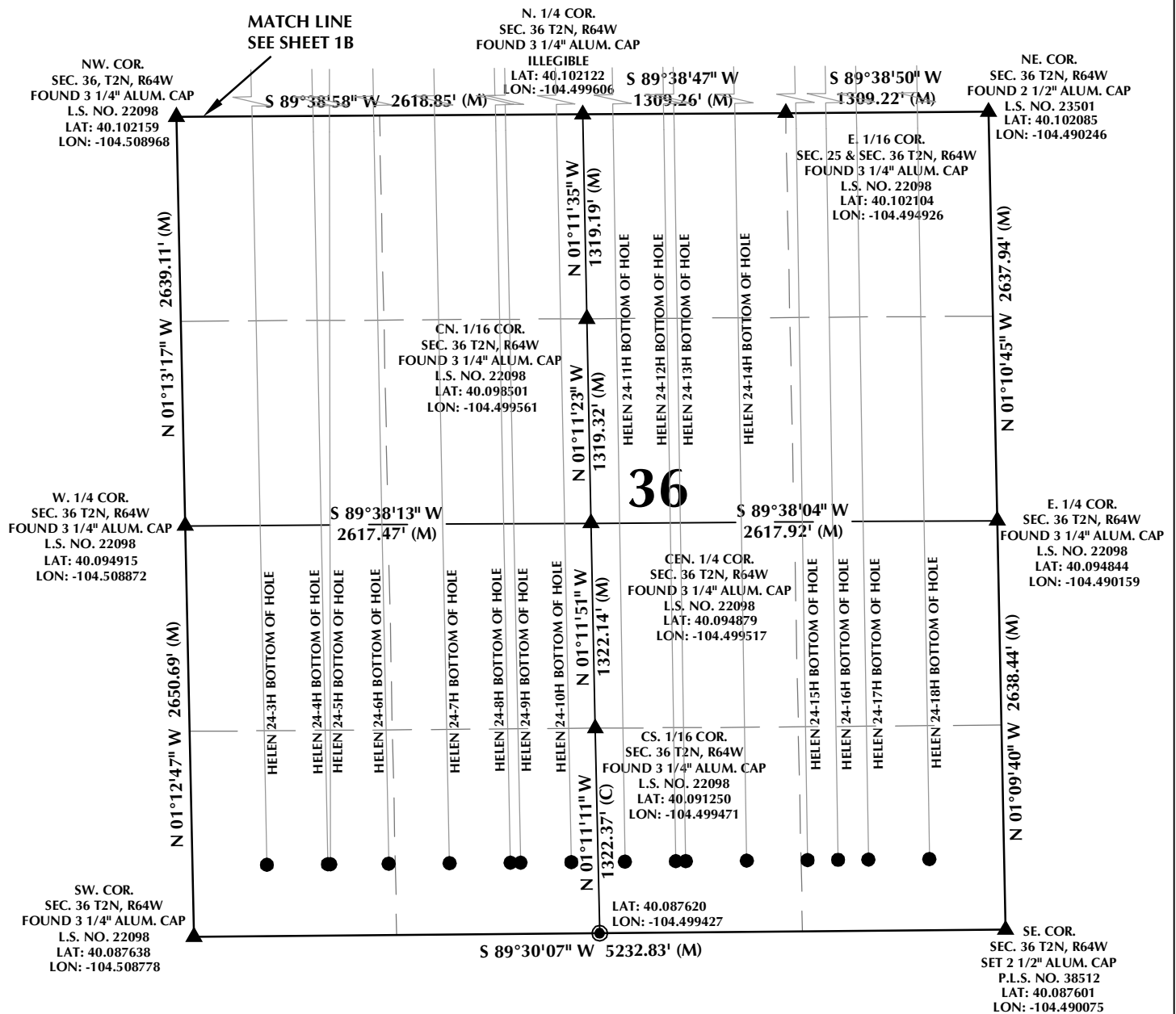
CONSULTING, LLC

SHERIDAN OFFICE
1095 Saberton Avenue
Sheridan, Wyoming 82801
Phone 307-674-0609

LOVELAND OFFICE
1635 Foxtrail Drive, Suite 204
Loveland, Colorado 80538
Phone 970-776-4331

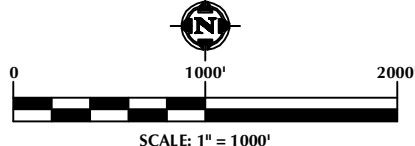
DRAFTED BY:	GLK	CHECKED BY:	JRS	SHEET NO:
DATE DRAFTED:	10/30/17	DATE SURVEYED:	9/29/17	1B
REVISED:	11/6/17	FILE NAME:	17-138	1B OF 2

MULTI-WELL PLAN SECTION 36, T2N, R64W



NOTES:

- ▲ INDICATES SECTION CORNER
 - INDICATES CALCULATED CORNER
 - BASIS OF BEARING DERIVED FROM COLORADO COORDINATE SYSTEM OF 1983 NORTH ZONE.
 - ALL MEASURED DISTANCES ARE GRID.
- COMBINED SCALE FACTOR: .99972739 CALCULATED FROM THE C. 1/4 CORNER OF SECTION 24, T2N, R64W.
- WELL FOOTAGES ARE MEASURED AT RIGHT ANGLES TO THE SECTION LINES.



SCALE: 1" = 1000'

WELL PAD - ARNOLD 02N-64W-24

MULTI-WELL PLAN

BOYD 24-1H, BOYD 24-2H, BOYD 24-3H, BOYD 24-4H,
HELEN 24-3H, HELEN 24-4H, HELEN 24-5H, HELEN 24-6H,
HELEN 24-7H, HELEN 24-8H, HELEN 24-9H, HELEN 24-10H,
HELEN 24-11H, HELEN 24-12H, HELEN 24-13H, HELEN 24-14H,
HELEN 24-15H, HELEN 24-16H, HELEN 24-17H & HELEN 24-18H
LOCATED IN SECTIONS 13, 24, 25 & 36, T2N, R64W, 6TH P.M.
WELD COUNTY, COLORADO



5950 Cedar Springs Road, Suite 200
Dallas, Texas 75235



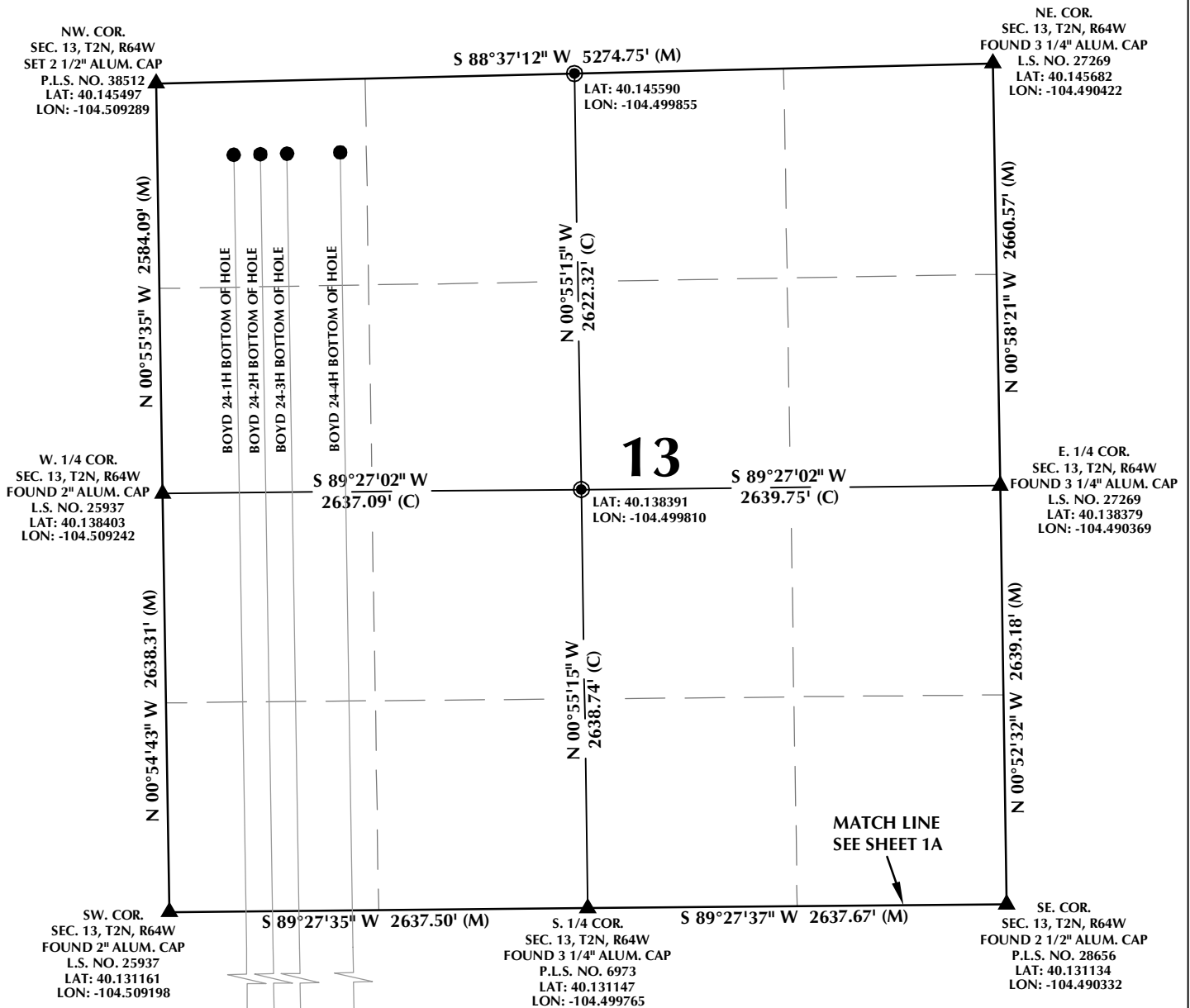
CONSULTING, LLC

SHERIDAN OFFICE
1095 Saberton Avenue
Sheridan, Wyoming 82801
Phone 307-674-0609

LOVELAND OFFICE
1635 Foxtrail Drive, Suite 204
Loveland, Colorado 80538
Phone 970-776-4331

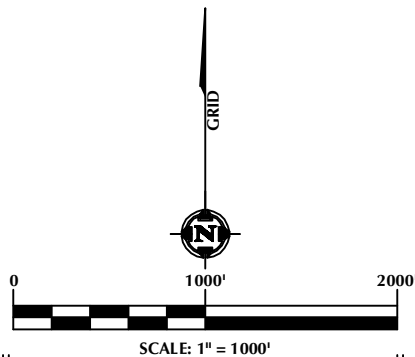
DRAFTED BY:	GLK	CHECKED BY:	JRS	SHEET NO:
DATE DRAFTED:	10/30/17	DATE SURVEYED:	9/29/17	1C
REVISED:	11/6/17	FILE NAME:	17-138	1C OF 2

MULTI-WELL PLAN SECTION 13, T2N, R64W



NOTES:

- ▲ INDICATES SECTION CORNER
 - INDICATES CALCULATED CORNER
 - BASIS OF BEARING DERIVED FROM COLORADO COORDINATE SYSTEM OF 1983 NORTH ZONE.
 - ALL MEASURED DISTANCES ARE GRID.
- COMBINED SCALE FACTOR: .99972739 CALCULATED FROM THE C. 1/4 CORNER OF SECTION 24, T2N, R64W.
- WELL FOOTAGES ARE MEASURED AT RIGHT ANGLES TO THE SECTION LINES.



WELL PAD - ARNOLD 02N-64W-24

MULTI-WELL PLAN

BOYD 24-1H, BOYD 24-2H, BOYD 24-3H, BOYD 24-4H, HELEN 24-3H, HELEN 24-4H, HELEN 24-5H, HELEN 24-6H, HELEN 24-7H, HELEN 24-8H, HELEN 24-9H, HELEN 24-10H, HELEN 24-11H, HELEN 24-12H, HELEN 24-13H, HELEN 24-14H, HELEN 24-15H, HELEN 24-16H, HELEN 24-17H & HELEN 24-18H LOCATED IN SECTIONS 13, 24, 25 & 36, T2N, R64W, 6TH P.M. WELD COUNTY, COLORADO



5950 Cedar Springs Road, Suite 200
Dallas, Texas 75235



CONSULTING, LLC

SHERIDAN OFFICE
1095 Saberton Avenue
Sheridan, Wyoming 82801
Phone 307-674-0609

LOVELAND OFFICE
1635 Foxtrail Drive, Suite 204
Loveland, Colorado 80538
Phone 970-776-4331

DRAFTED BY:	GLK	CHECKED BY:	JRS	SHEET NO:
DATE DRAFTED:	10/30/17	DATE SURVEYED:	9/29/17	1D
REVISED:	11/6/17	FILE NAME:	17-138	1D OF 2

ARNOLD 02N-64W-24

WELL NOTES:

BOYD 24-1H

SURFACE: 1441' FSL, 2255' FWL, SEC. 24
BOTTOM HOLE: 460' FNL, 480' FWL, SEC. 13

BOYD 24-2H

SURFACE: 1441' FSL, 2275' FWL, SEC. 24
BOTTOM HOLE: 460' FNL, 648' FWL, SEC. 13

BOYD 24-3H

SURFACE: 1440' FSL, 2295' FWL, SEC. 24
BOTTOM HOLE: 460' FNL, 816' FWL, SEC. 13

BOYD 24-4H

SURFACE: 1440' FSL, 2315' FWL, SEC. 24
BOTTOM HOLE: 460' FNL, 1152' FWL, SEC. 13

HELEN 24-3H

SURFACE: 1243' FSL, 2052' FWL, SEC. 24
BOTTOM HOLE: 460' FSL, 480' FWL, SEC. 36

HELEN 24-4H

SURFACE: 1243' FSL, 2072' FWL, SEC. 24
BOTTOM HOLE: 460' FSL, 873' FWL, SEC. 36

HELEN 24-5H

SURFACE: 1242' FSL, 2092' FWL, SEC. 24
BOTTOM HOLE: 460' FSL, 889' FWL, SEC. 36

HELEN 24-6H

SURFACE: 1242' FSL, 2112' FWL, SEC. 24
BOTTOM HOLE: 460' FSL, 1265' FWL, SEC. 36

HELEN 24-7H

SURFACE: 1242' FSL, 2132' FWL, SEC. 24
BOTTOM HOLE: 460' FSL, 1658' FWL, SEC. 3 6

HELEN 24-8H

SURFACE: 1242' FSL, 2152' FWL, SEC. 24
BOTTOM HOLE: 460' FSL, 2051' FWL, SEC. 36

HELEN 24-9H

SURFACE: 1242' FSL, 2172' FWL, SEC. 24
BOTTOM HOLE: 460' FSL, 2116' FWL, SEC. 36

HELEN 24-10H

SURFACE: 1241' FSL, 2192' FWL, SEC. 24
BOTTOM HOLE: 460' FSL, 2444' FWL, SEC. 36

HELEN 24-11H

SURFACE: 1241' FSL, 2212' FWL, SEC. 24
BOTTOM HOLE: 460' FSL, 2444' FEL, SEC. 36

HELEN 24-12H

SURFACE: 1241' FSL, 2232' FWL, SEC. 24
BOTTOM HOLE: 460' FSL, 2116' FEL, SEC. 36

HELEN 24-13H

SURFACE: 1241' FSL, 2252' FWL, SEC. 24
BOTTOM HOLE: 460' FSL, 2051' FEL, SEC. 36

HELEN 24-14H

SURFACE: 1241' FSL, 2272' FWL, SEC. 24
BOTTOM HOLE: 460' FSL, 1658' FEL, SEC. 36

HELEN 24-15H

SURFACE: 1240' FSL, 2292' FWL, SEC. 24
BOTTOM HOLE: 460' FSL, 1265' FEL, SEC. 36

HELEN 24-16H

SURFACE: 1240' FSL, 2312' FWL, SEC. 24
BOTTOM HOLE: 460' FSL, 1069' FEL, SEC. 36

HELEN 24-17H

SURFACE: 1240' FSL, 2332' FWL, SEC. 24
BOTTOM HOLE: 460' FSL, 873' FEL, SEC. 36

HELEN 24-18H

SURFACE: 1240' FSL, 2352' FWL, SEC. 24
BOTTOM HOLE: 460' FSL, 480' FEL, SEC. 36

WELL PAD - ARNOLD 02N-64W-24

MULTI-WELL PLAN

BOYD 24-1H, BOYD 24-2H, BOYD 24-3H, BOYD 24-4H,
HELEN 24-3H, HELEN 24-4H, HELEN 24-5H, HELEN 24-6H,
HELEN 24-7H, HELEN 24-8H, HELEN 24-9H, HELEN 24-10H,
HELEN 24-11H, HELEN 24-12H, HELEN 24-13H, HELEN 24-14H,
HELEN 24-15H, HELEN 24-16H, HELEN 24-17H & HELEN 24-18H
LOCATED IN SECTIONS 13, 24, 25 & 36, T2N, R64W, 6TH P.M.
WELD COUNTY, COLORADO



5950 Cedar Springs Road, Suite 200
Dallas, Texas 75235



CONSULTING, LLC

SHERIDAN OFFICE
1095 Saberton Avenue
Sheridan, Wyoming 82801
Phone 307-674-0609

LOVELAND OFFICE
1635 Foxtrail Drive, Suite 204
Loveland, Colorado 80538
Phone 970-776-4331

DRAFTED BY:	GLK	CHECKED BY:	JRS	SHEET NO:
DATE DRAFTED:	10/30/17	DATE SURVEYED:	9/29/17	2
REVISED:	11/6/17	FILE NAME:	17-138	2 OF 2