



SRC ENERGY

**Operator:** SRC Energy  
**Well Name:** Hergert 8-35  
**Legal:** SESW, Section 8, Township 6N, Range 66W  
**Location:** Weld County, CO  
**API:** 05-123-25977

Deepest Water Well  
Within 1 Mile = 675'





### Wellbore History

Spud Date: 2/14/2008  
Surf Csg: 8.625", 24# @ 753' – 490 sx  
Prod Csg: 4.5", 11.6# @ 7390' – 1110 sx  
TOC: 362' (CBL)  
Perfs: NB-CD: 6936'-7260'

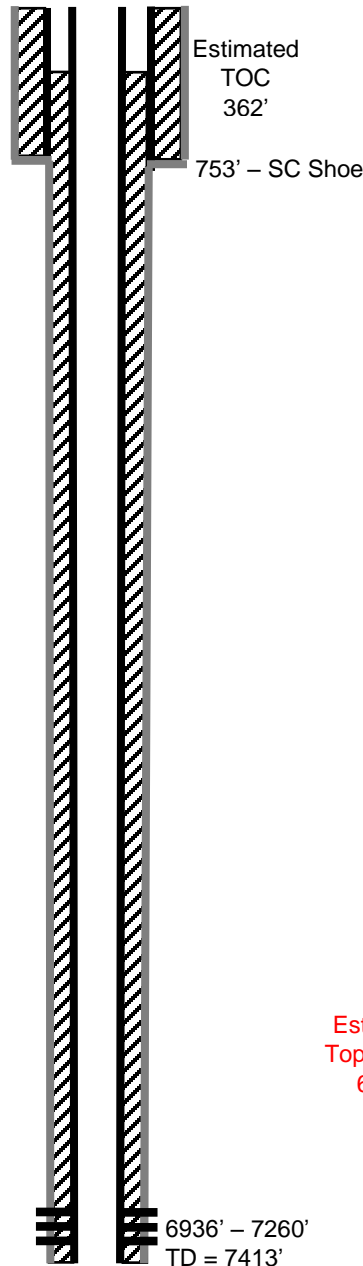
### P&A Procedure

Set CIBP @ 6861'  
Set 16 sx on top of CIBP (161' plug)  
Set 29 sx @ 4300' (300' plug)  
Cut casing @ 350'  
Pmp 190 sx @ 903' to surface

### Key

-  Existing Cement Coverage
-  CICR
-  Cement Pumped
-  CIBP

### Current



### Proposed

