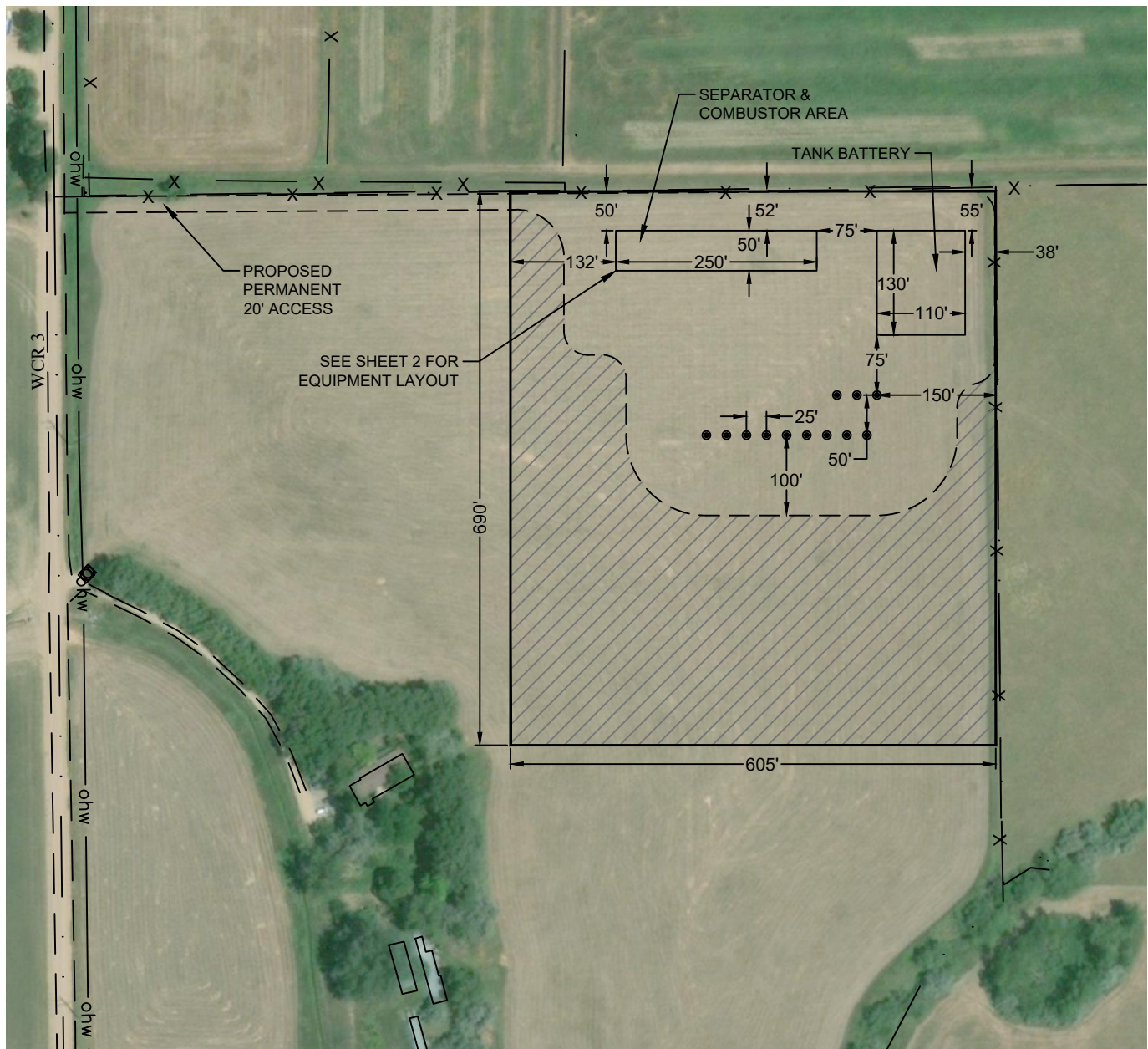




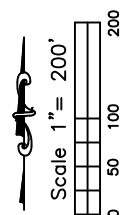
Washburn Land Surveying
www.WashburnSurveying.com
970-232-9645

FACILITY EXHIBIT
NOBLE 3N68W5 SITE

SECTION: 5
TOWNSHIP: 3N
RANGE: 68W
6TH P.M.
WELD COUNTY, CO



//// RECLAIMED AREA(S)
TOTAL DISTURBED AREA OF LOCATION = ± 9.8 ACRES
TOTAL SIZE OF AREA AFTER RECLAMATION = ± 4.6 ACRES

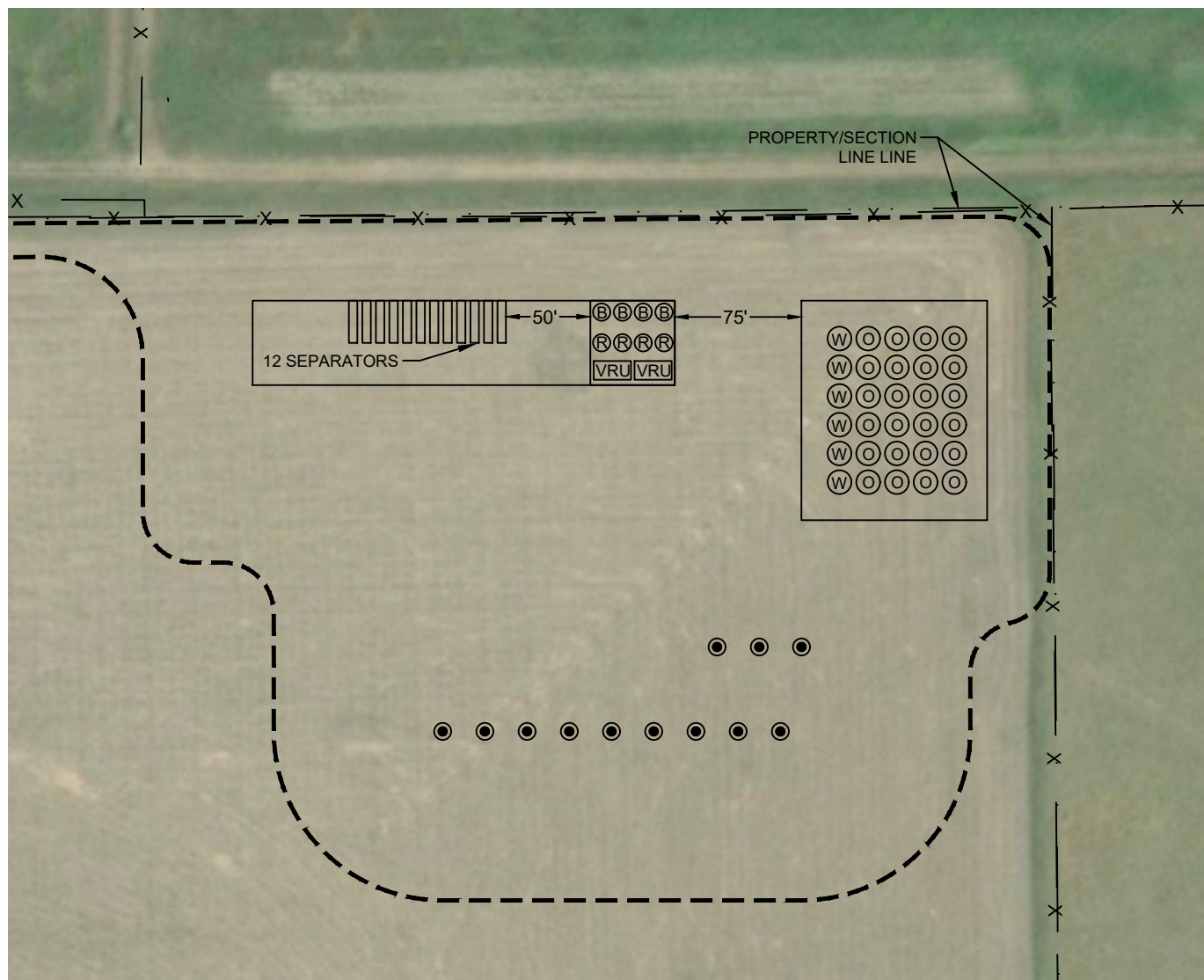




Washburn Land Surveying
www.WashburnSurveying.com
970-232-9645

FACILITY EXHIBIT
NOBLE 3N68W5 SITE

SECTION: 5
TOWNSHIP: 3N
RANGE: 68W
6TH P.M.
WELD COUNTY, CO



LEGEND:

- OIL TANK - 24
- Ⓜ WATER TANKS - 6
- Ⓟ BURNER/ECD - 4
- Ⓡ VAPOR RECOVERY TOWERS - 4
- VRU VAPOR RECOVERY UNIT - 2
- ▭ SEPARATOR - 12

