



RADIAL CEMENT BOND
GAMMA RAY
CCL

Company		VERDAD OIL AND GAS CORP.					
Well		LEECH #1					
Field		WATTENBERG					
County		WELD					
State		COLORADO					
Location:		API # :					
SEC 24 TWP 1S RGE 66W		Elevation					
Permanent Datum		GL					
Log Measured From		KB 10'					
Drilling Measured From		KB					
Other Services		K.B. D.F. G.L.					
Date		12-15-2017					
Run Number		ONE					
Depth Driller							
Depth Logger		3833'					
Bottom Logged Interval		3833'					
Top Log Interval		SURFACE					
Open Hole Size		8 3/4"					
Type Fluid		WATER					
Density / Viscosity		1					
Max. Recorded Temp.		128					
Estimated Cement Top		ABOVE 300'					
Time Well Ready		NA					
Time Logger on Bottom		NA					
Equipment Number		W-062					
Location		WINDSOR, CO					
Recorded By		A.STEERMAN					
Witnessed By		M.LAFFERTY					
Borehole Record		Tubing Record					
Run Number	Bit	From	To	Size	Weight	From	To
Casing Record	Size	Wgt/Ft	Top	Bottom			
Surface String							
Prot. String							
Production String							
Liner							

<<< Fold Here >>>

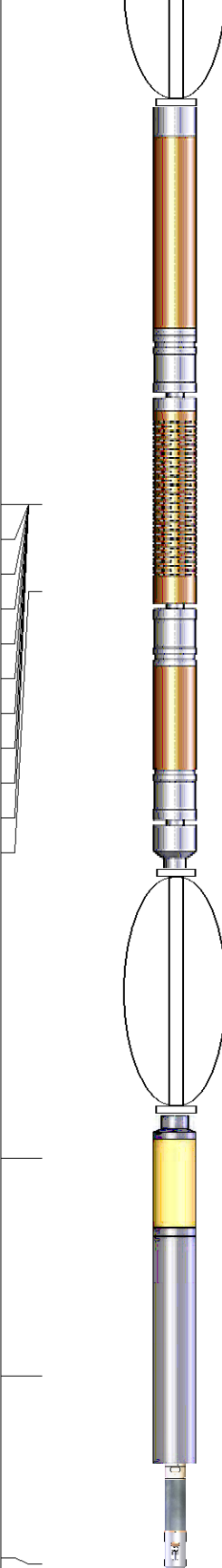
All interpretations are opinions based on inferences from electrical or other measurements and we cannot and do not guarantee the accuracy or correctness of any interpretation, and we shall not, except in the case of gross or willful negligence on our part, be liable or responsible for any loss, costs, damages, or expenses incurred or sustained by anyone resulting from any interpretation made by any of our officers, agents or employees. These interpretations are also subject to our general terms and conditions set out in our current Price Schedule.

Comments

RAN CBL TO VERIFY CEMENT BOND
CORRELATED TO LOG PASS FROM 12-14-2017

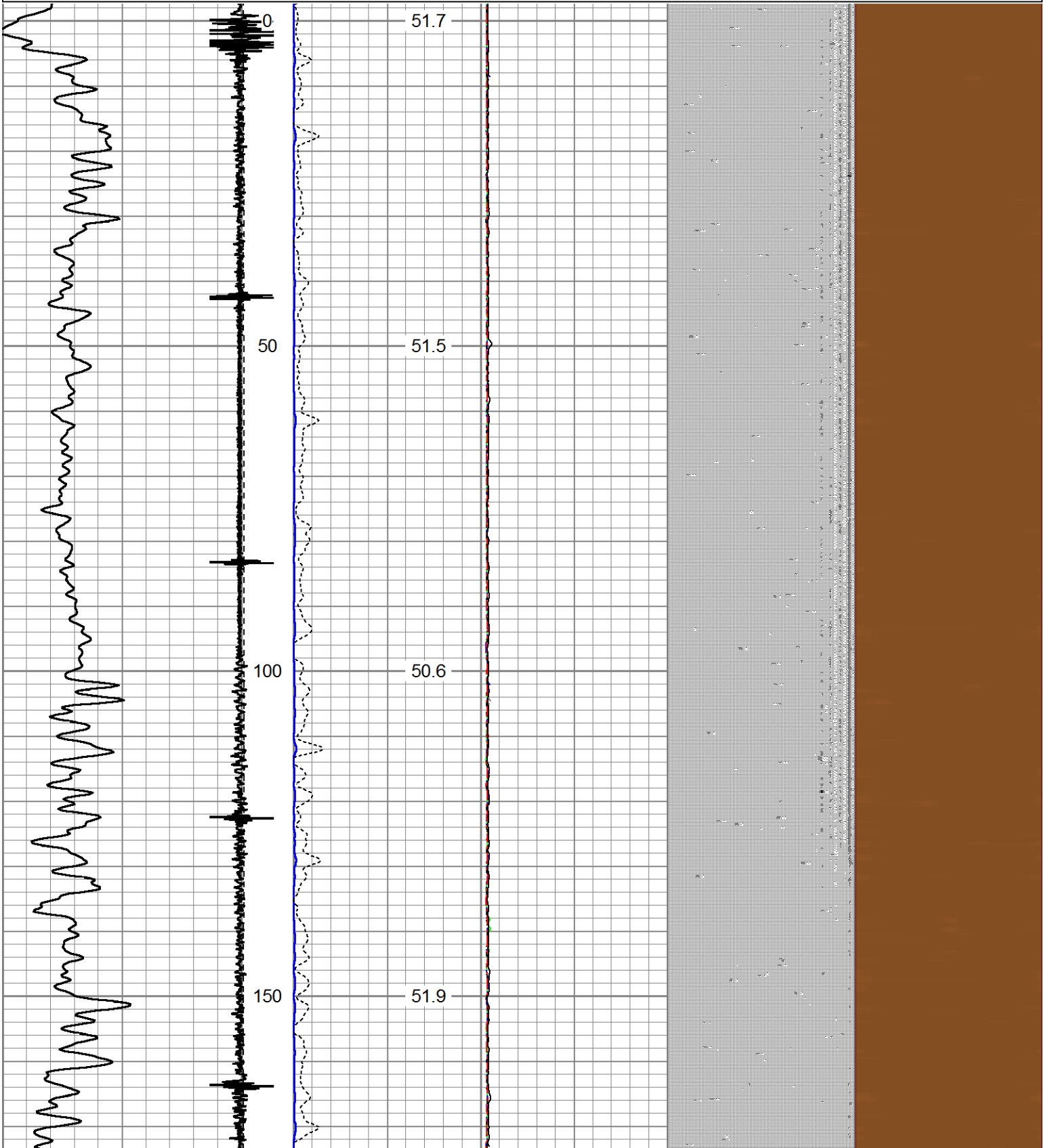
THANK YOU FOR USING CUTTERS WIRELINE

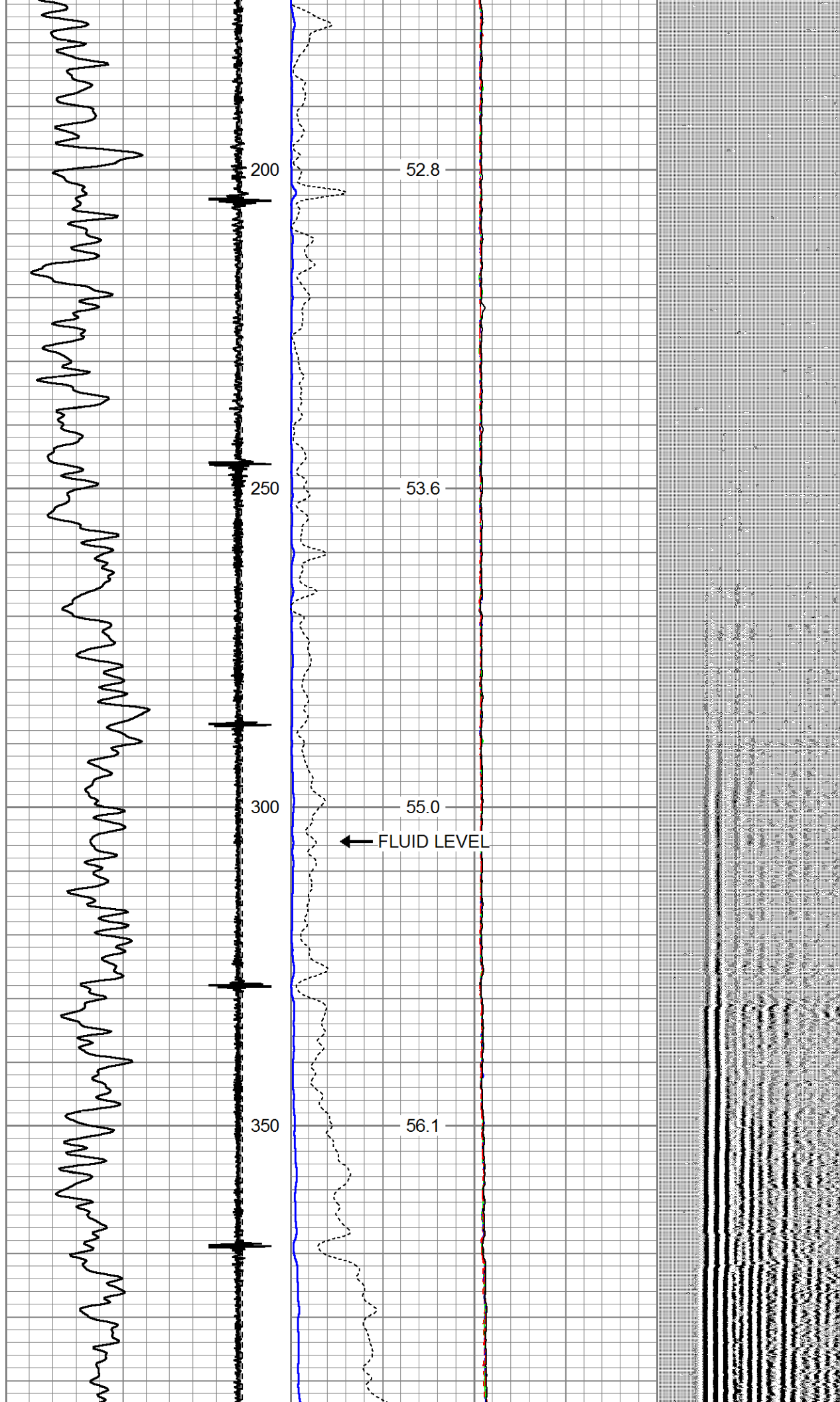
Sensor	Offset (ft)	Schematic	Description	Len (ft)	OD (in)	Wt (lb)
			Probe	2.83	2.75	40.00

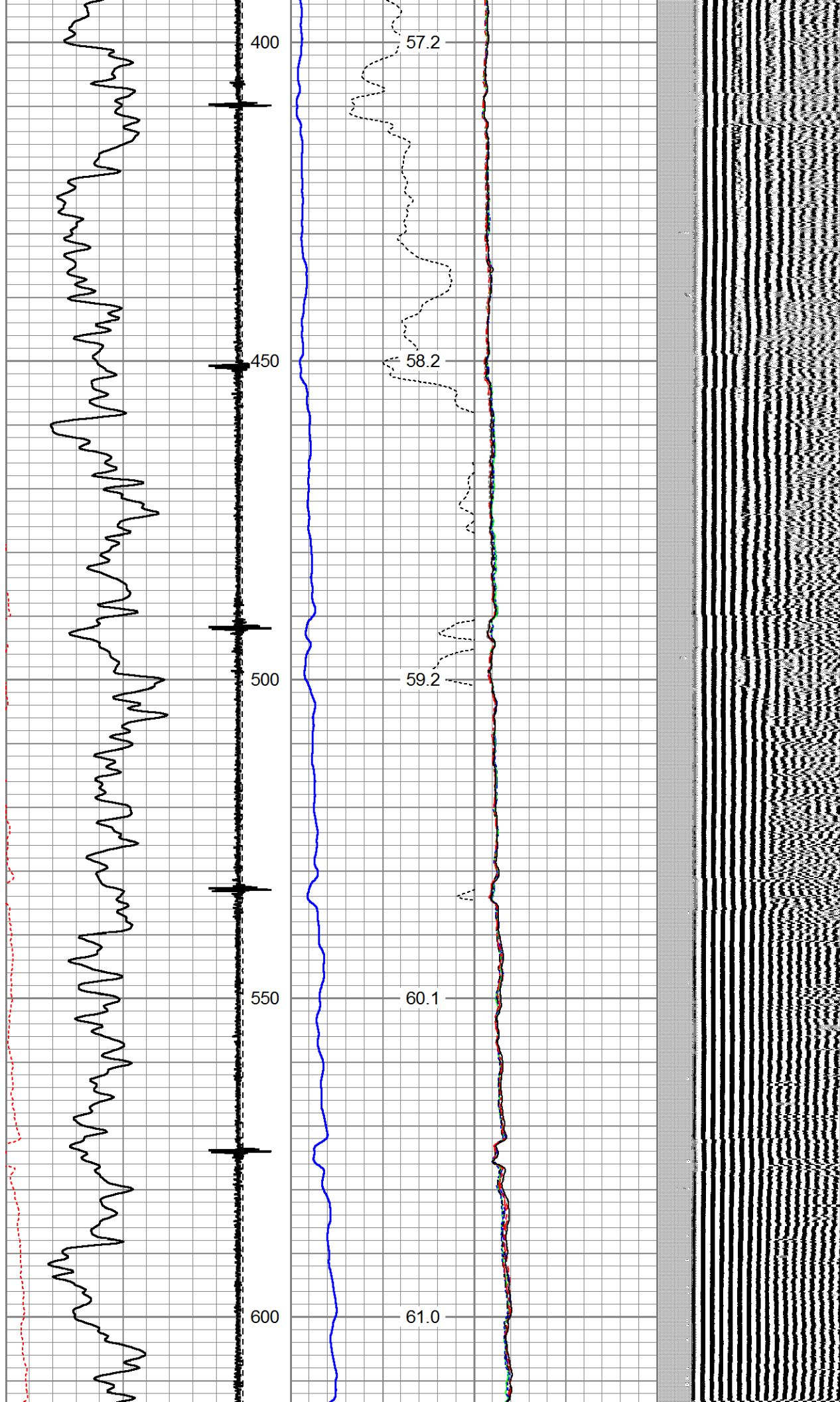
WVF3FT	12.27		RBT-Probe (060112_55) Probe 2.75" Radii Bond Tool	8.75	2.75	90.00	
WVFCAL	12.27						
WVFS1	12.27						
WVFS2	12.27						
WVFS3	12.27						
WVFS4	12.27						
WVFS5	12.27						
WVFS6	12.27						
WVFS7	12.27						
WVFS8	12.27						
WVF5FT	11.27						
			Probe	2.83	2.75	40.00	
CCL	4.75						
			GR-Probe (060109) Probe 2.75" 4 Channel Pulse	4.00	2.75	30.00	
GR	2.25						
			TEMP-1.375TEMP (060110) Temperature Tool	1.25	1.38	30.00	
TEMP	0.08						
Dataset: leech #1.db: field/well/run1/pass7 Total Length: 19.67 ft Total Weight: 230.00 lb O.D. 2.75 in							

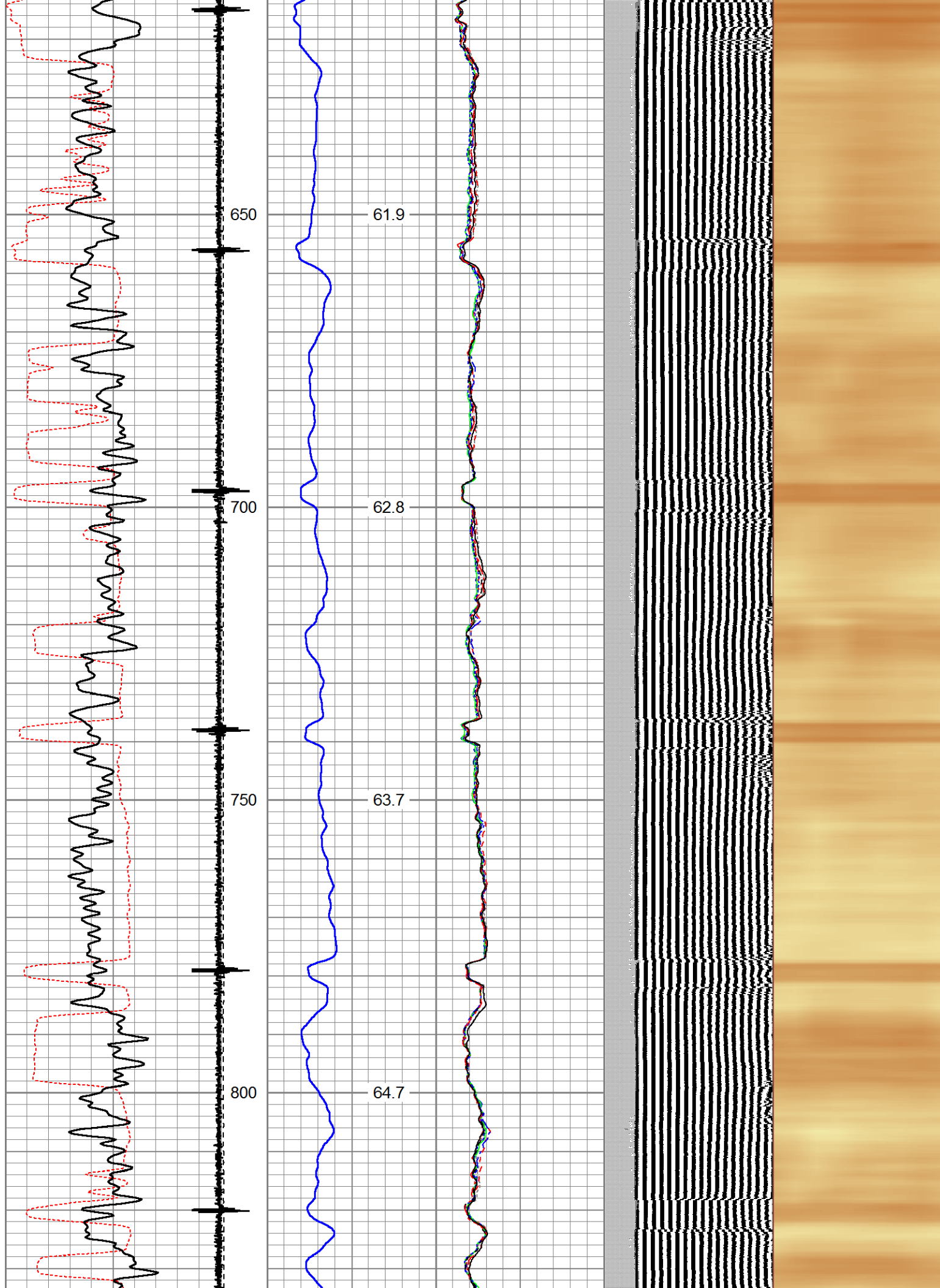
Database File: leech #1.db
 Dataset Pathname: pass7
 Presentation Format: rbl55
 Dataset Creation: Fri Dec 15 07:07:46 2017 by Log 7.0 B1
 Charted by: Depth in Feet scaled 1:240

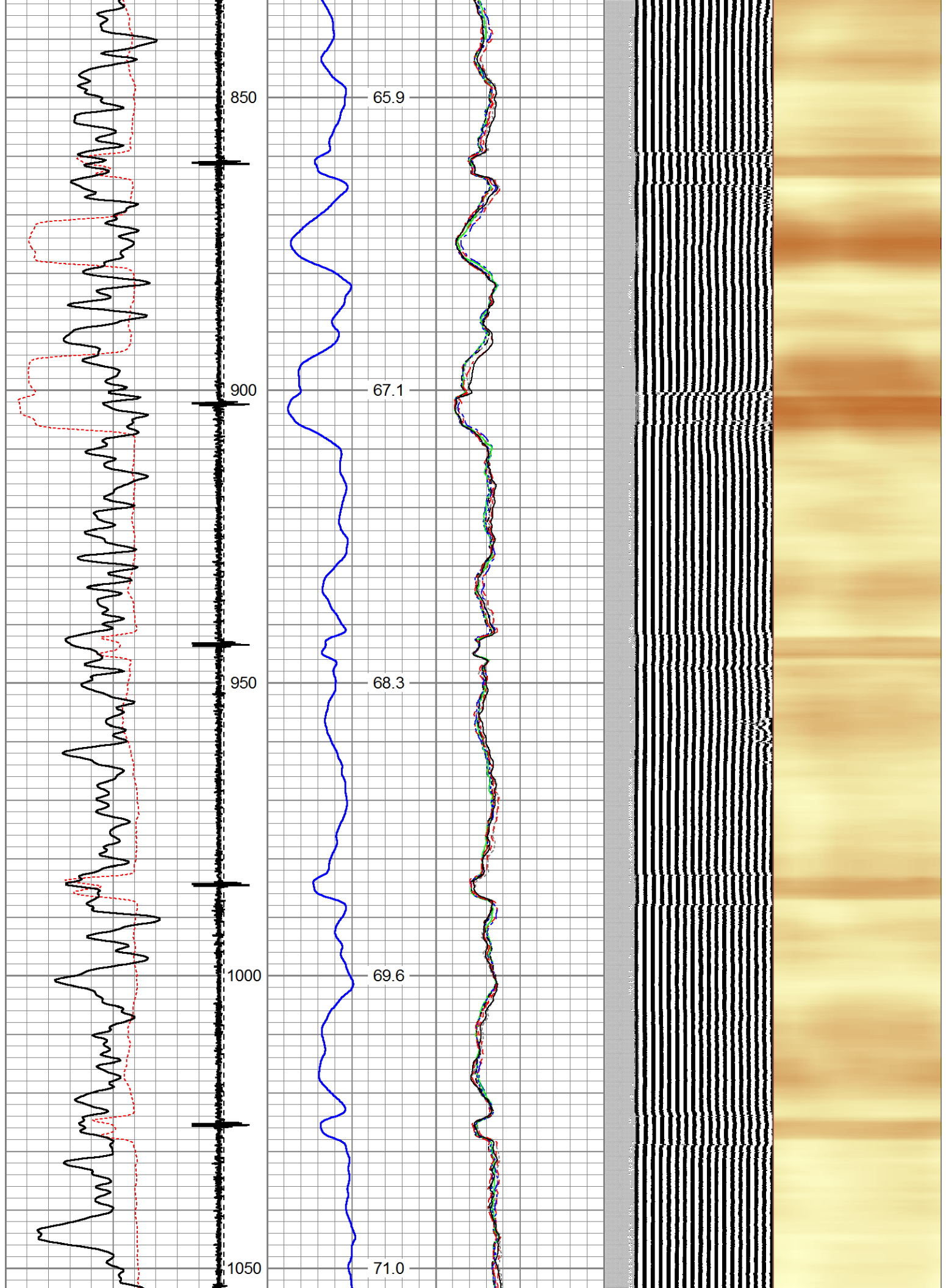
Charted by:		Depth in Feet scaled 1.240											
325	TT (usec)	225	LTEN	0	Amplitude (mV)	100	-5	AMPS2	150	200	VDL	1200	Cement Map
0	GR (GAPI)	200	(lb)		Amplified Amplitude		-5	AMPS3	150				
			CCL000	0	(mV)	10	-5	AMPS4	150				
					TEMP		-5	AMPS5	150				
					(degF)		-5	AMPS6	150				
							-5	AMPS7	150				
							-5	AMPS8	150				
							-5	AMPS1	150				

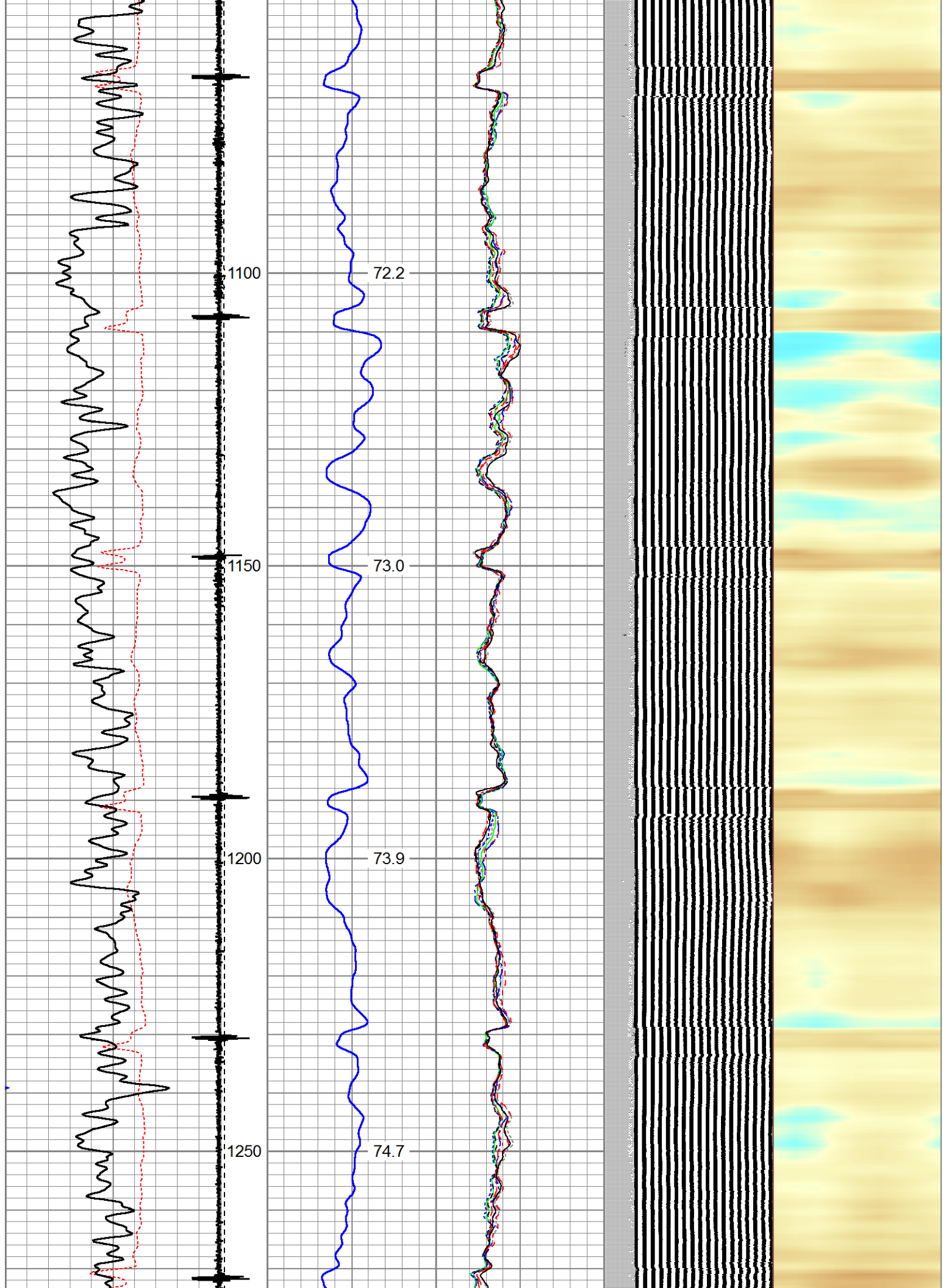


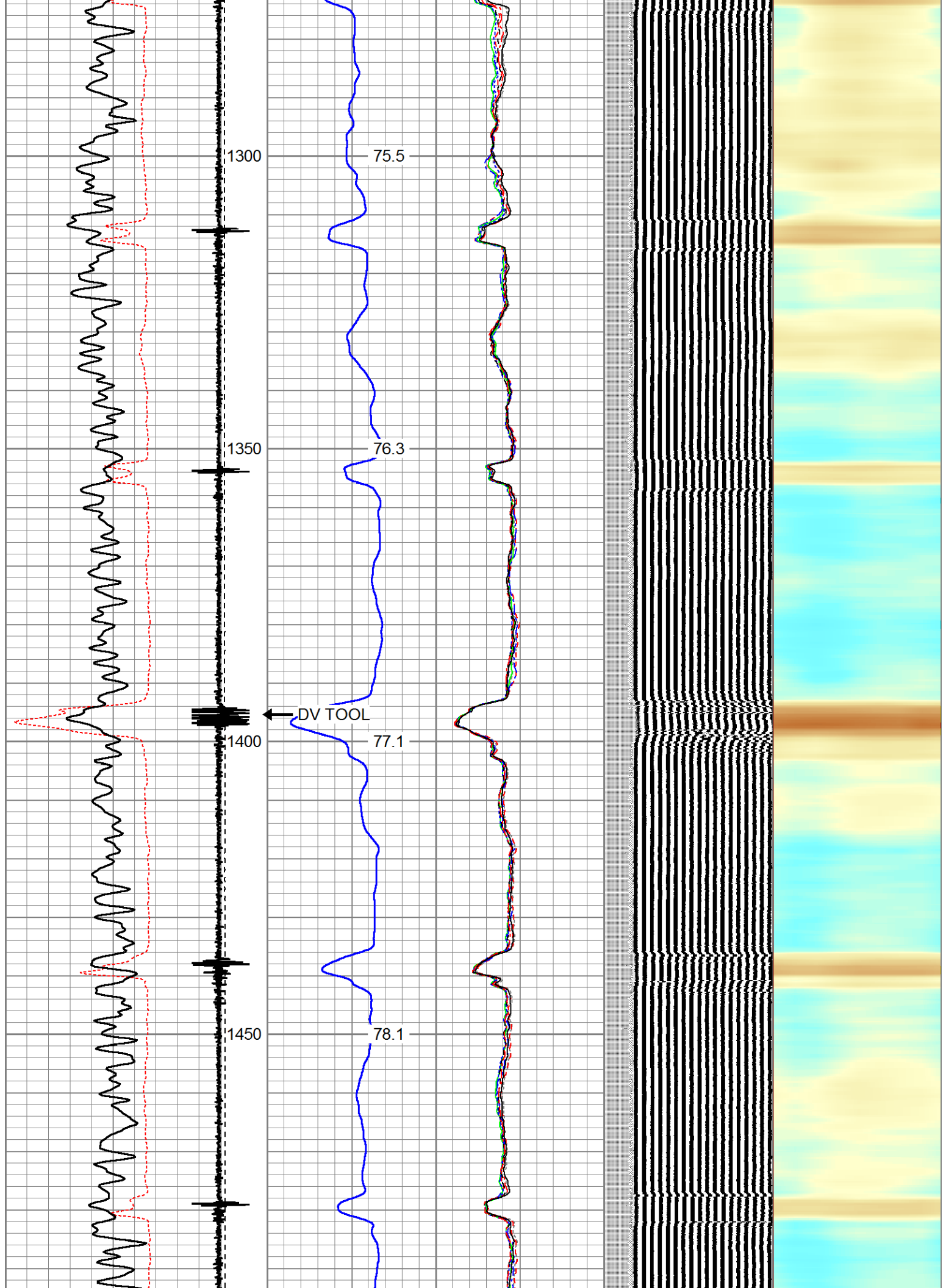


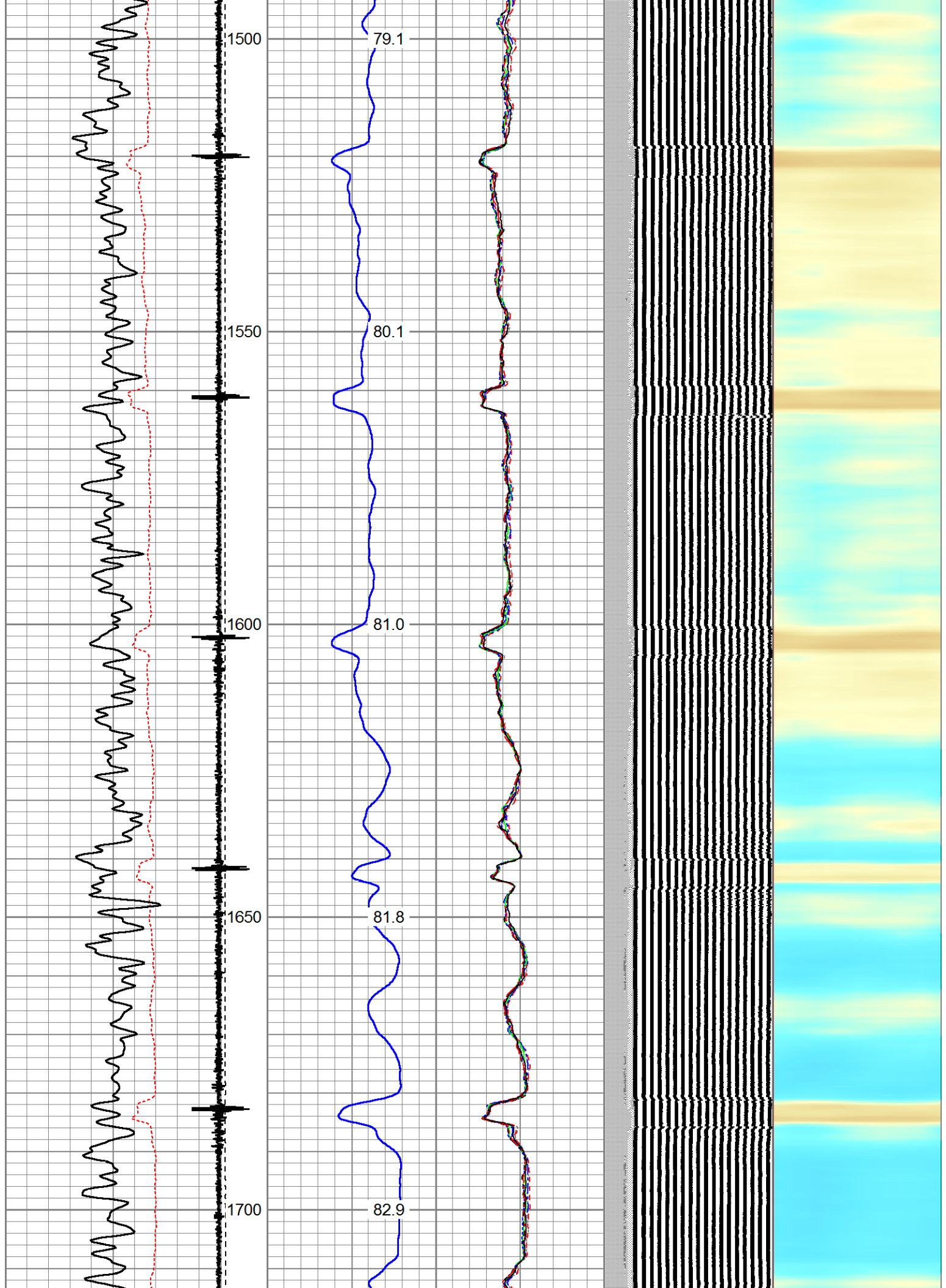


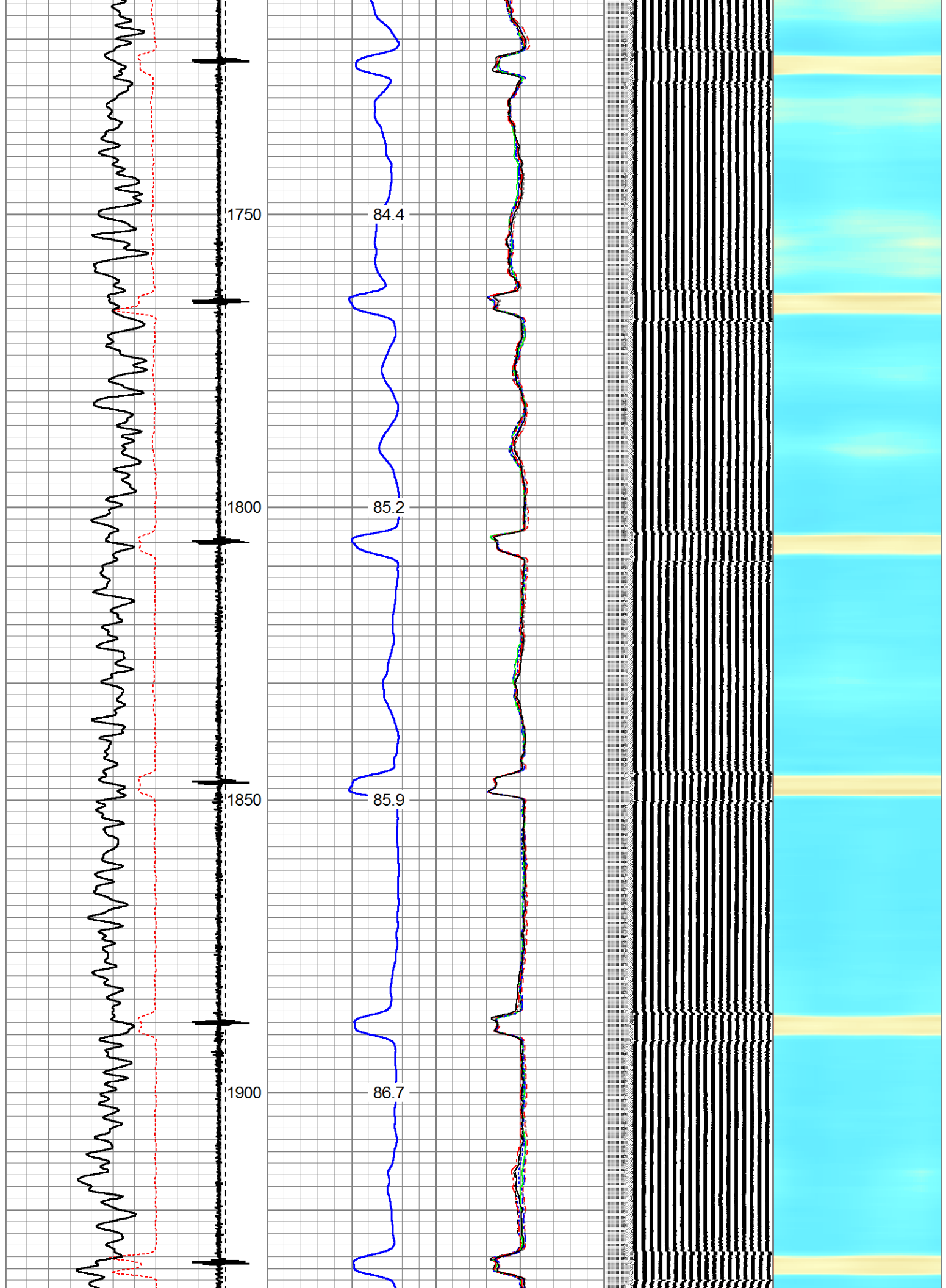


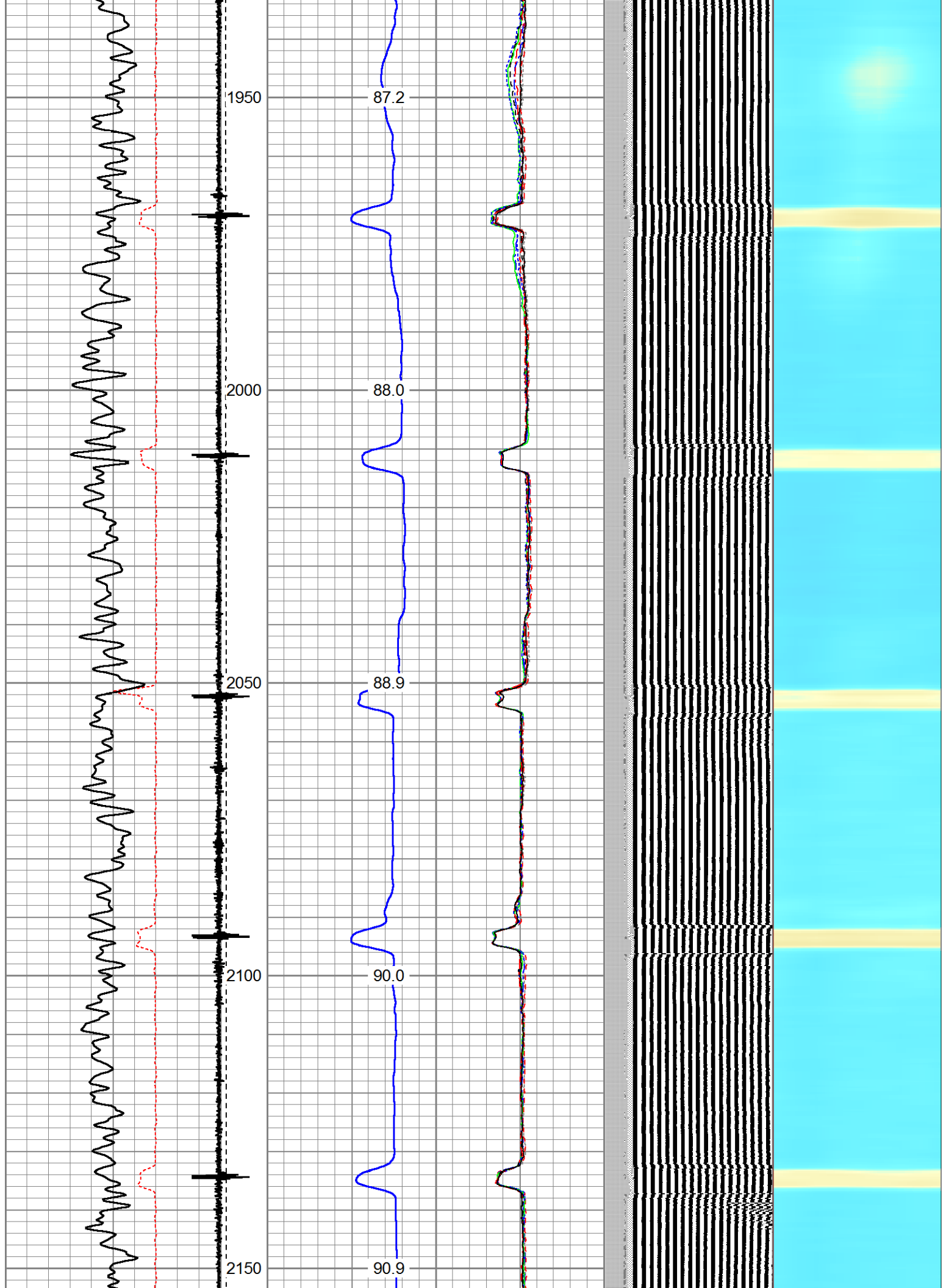


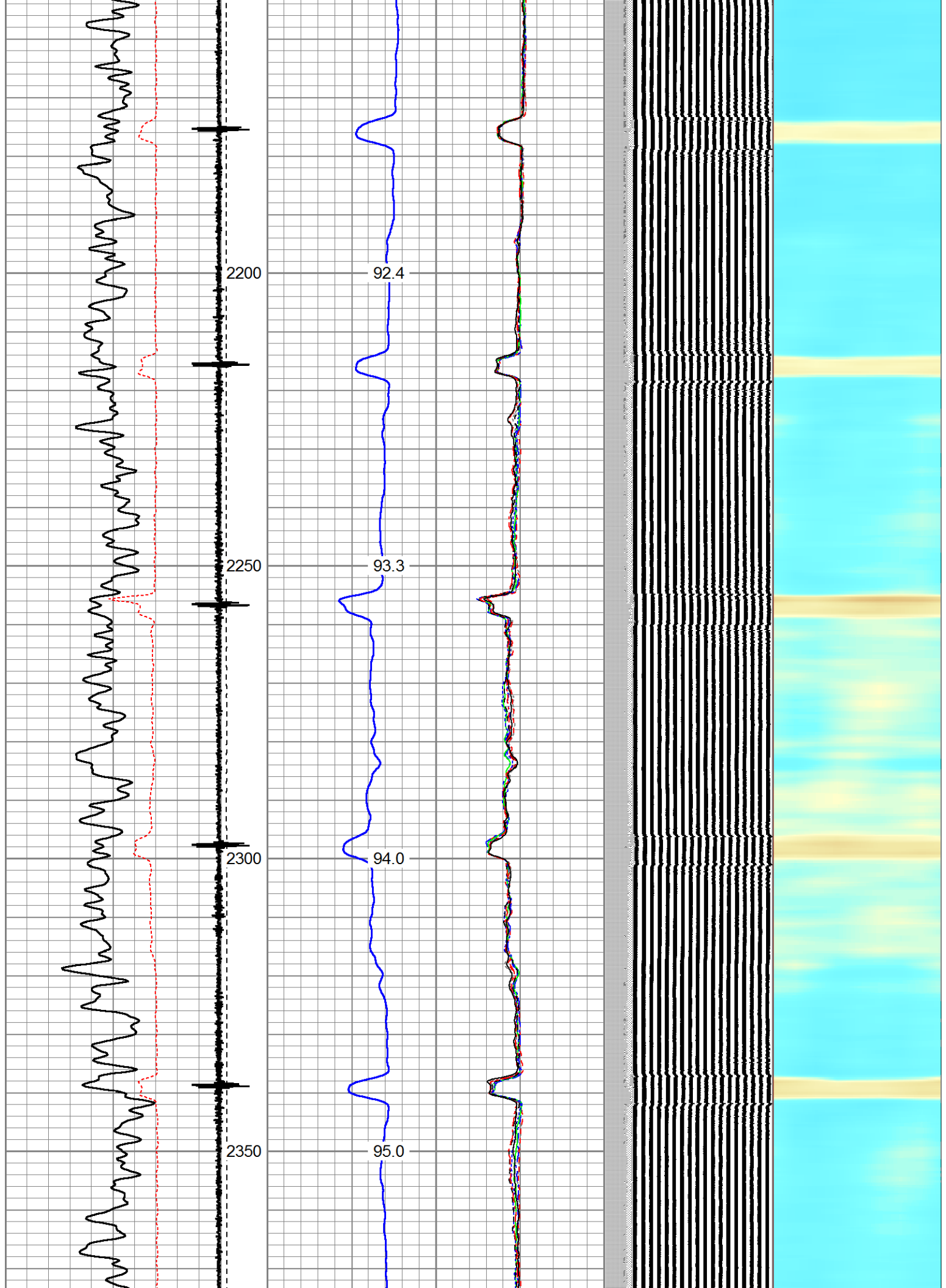


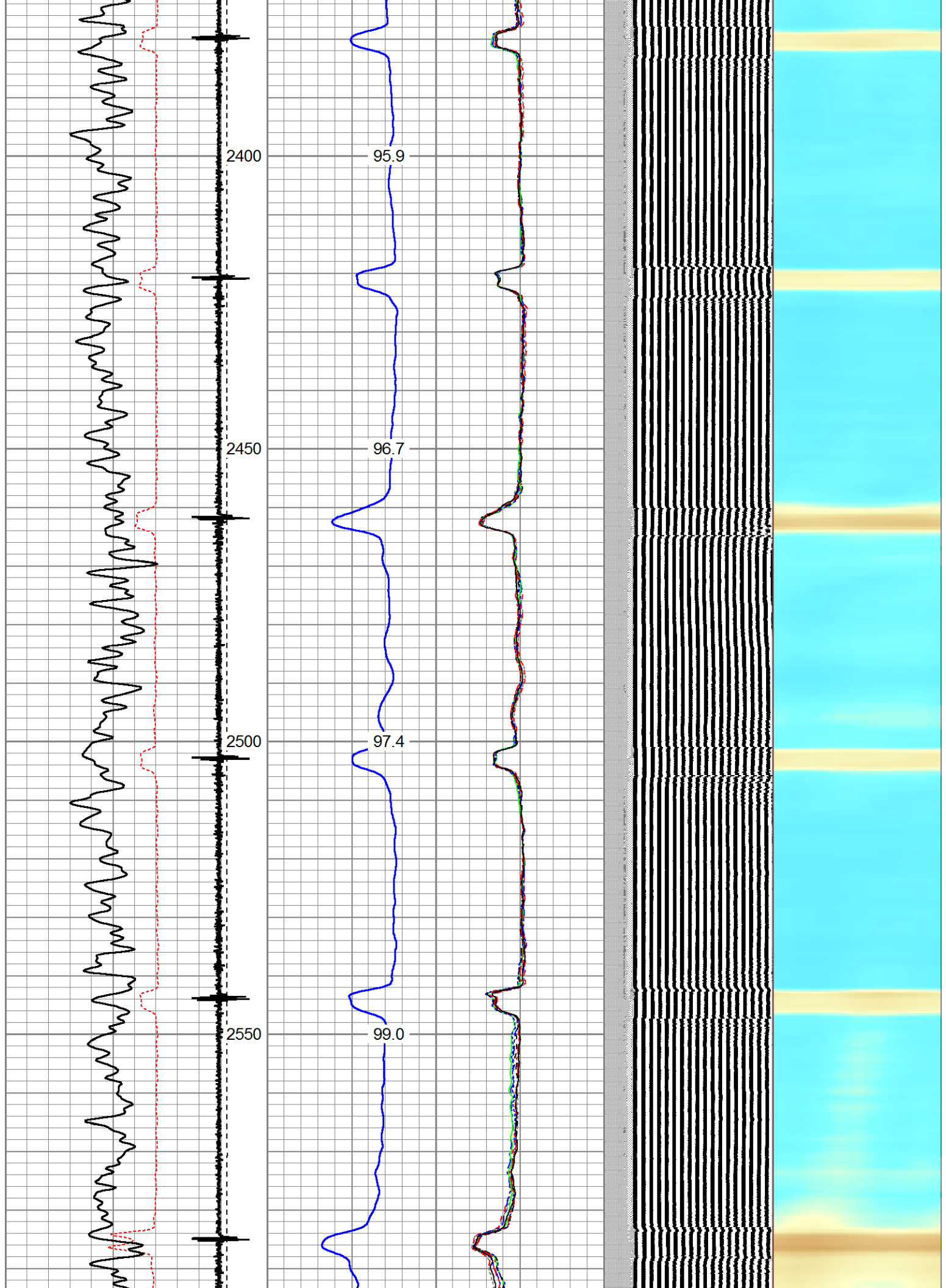


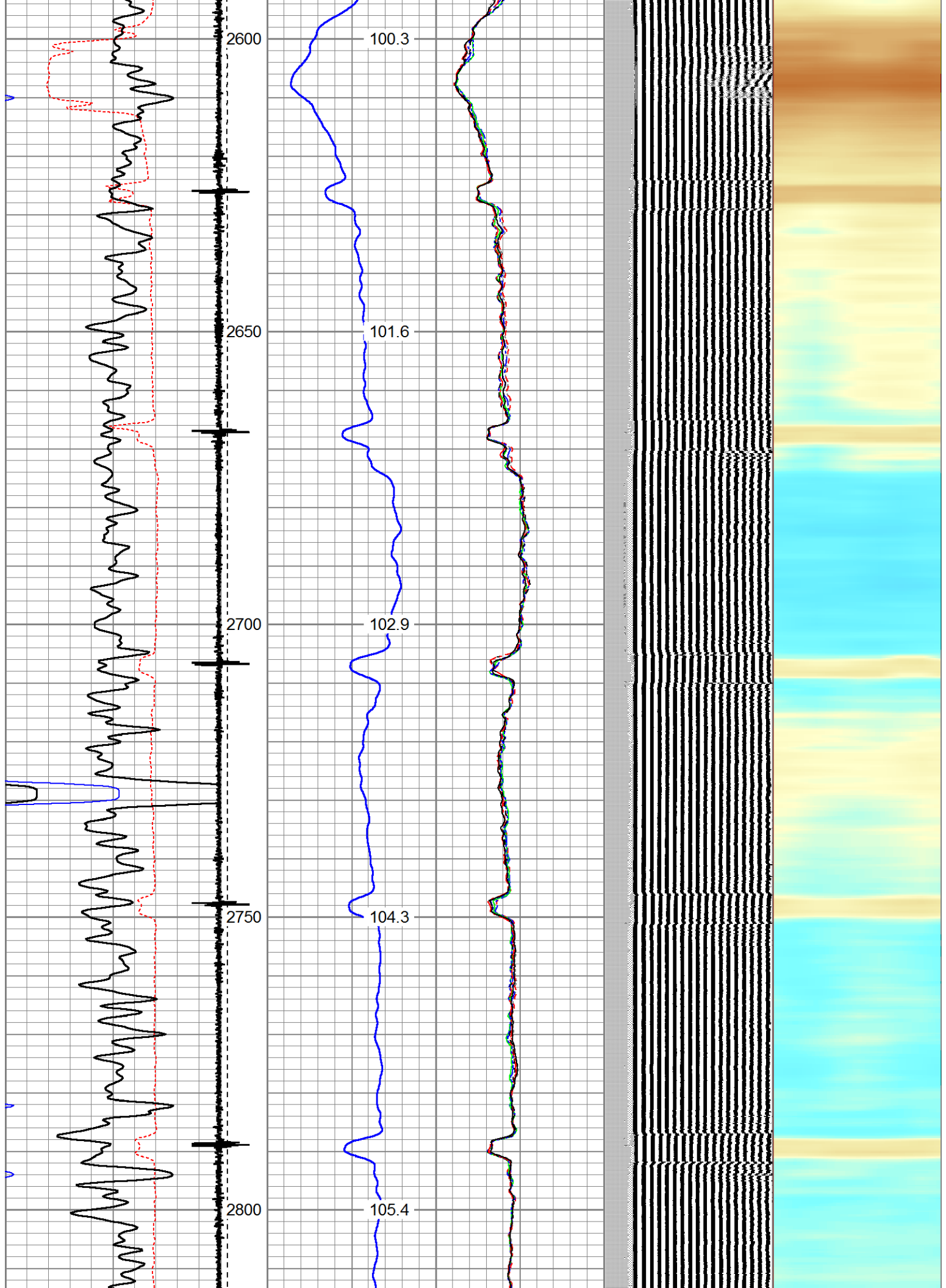


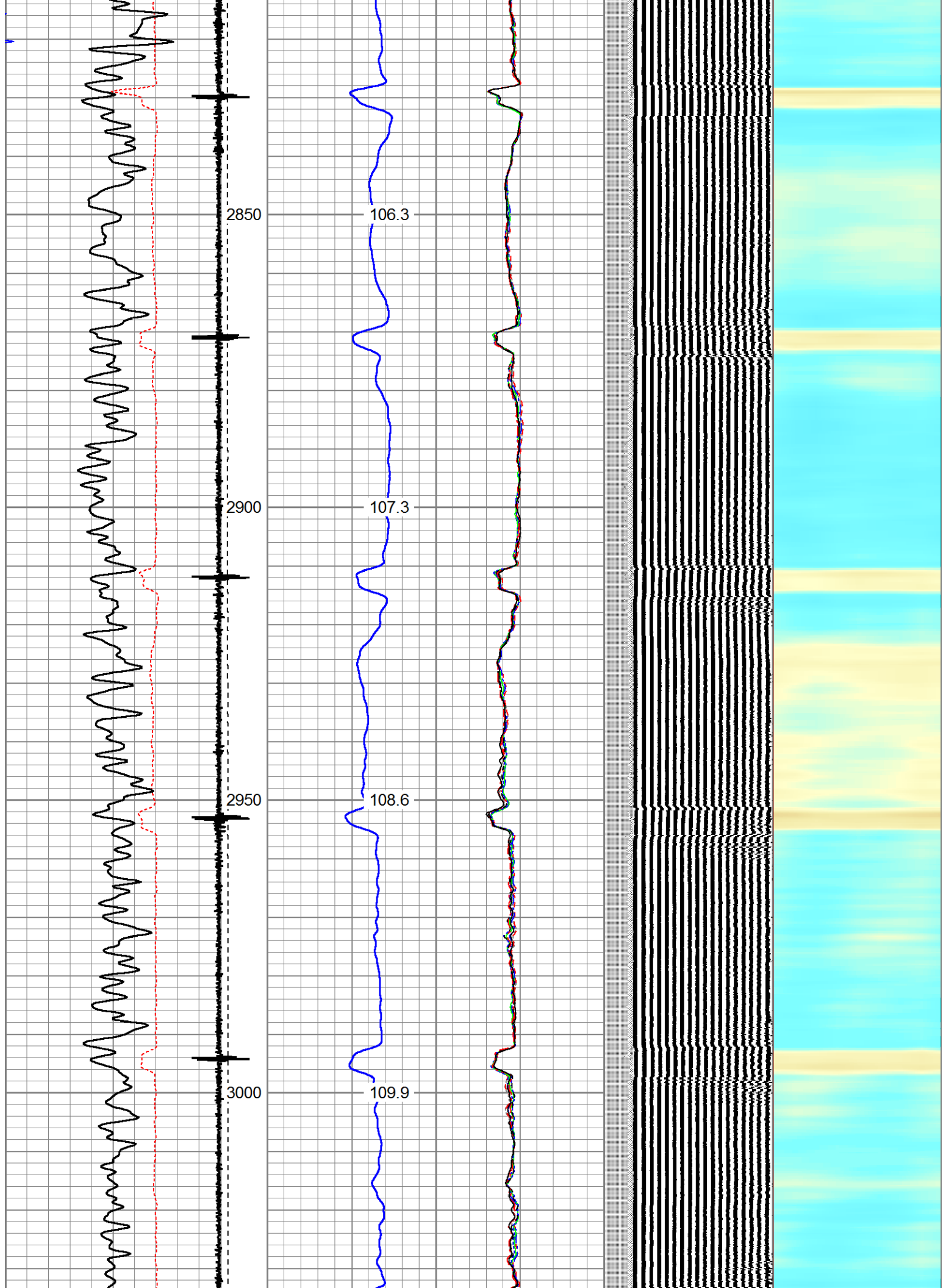


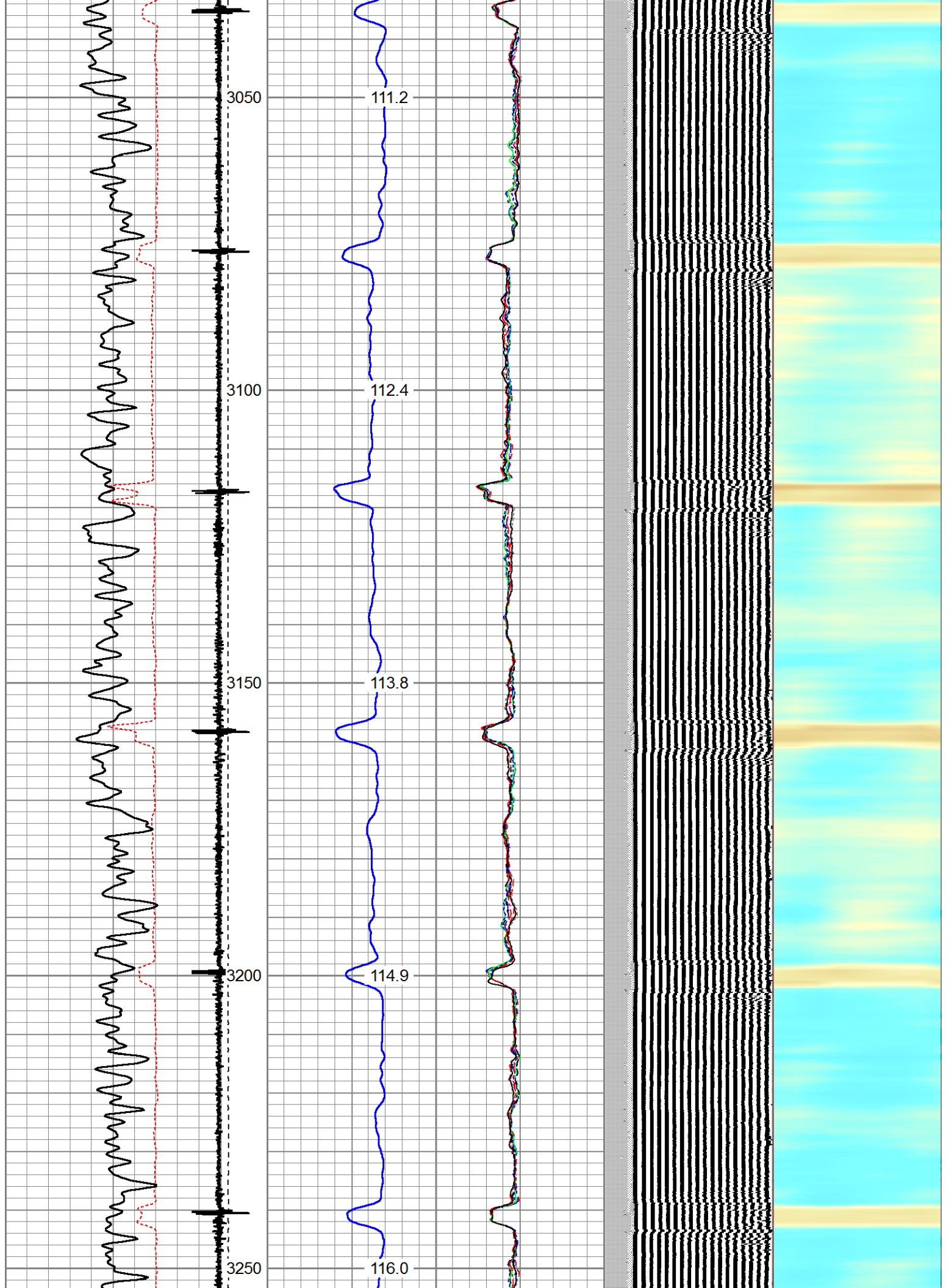


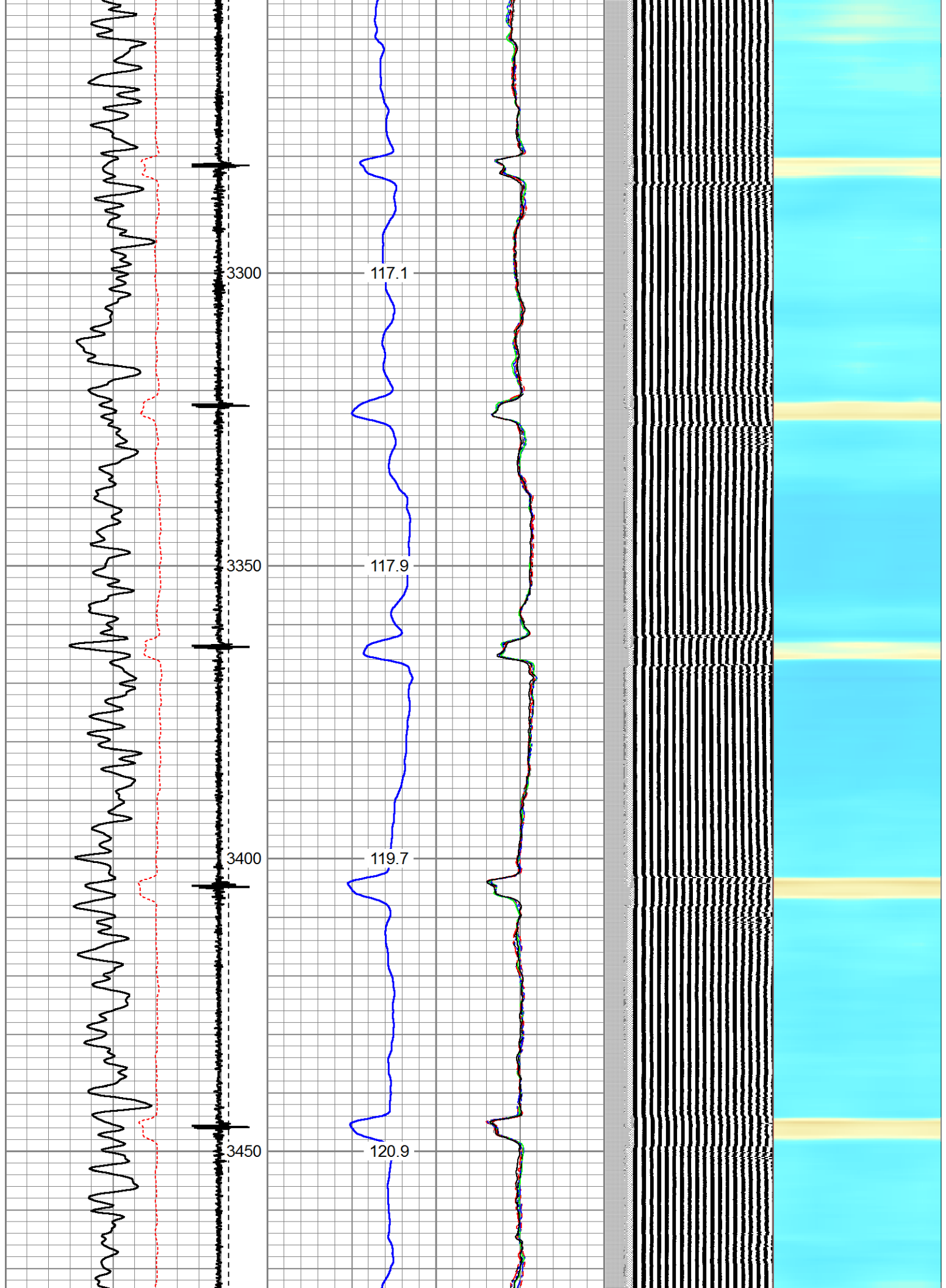


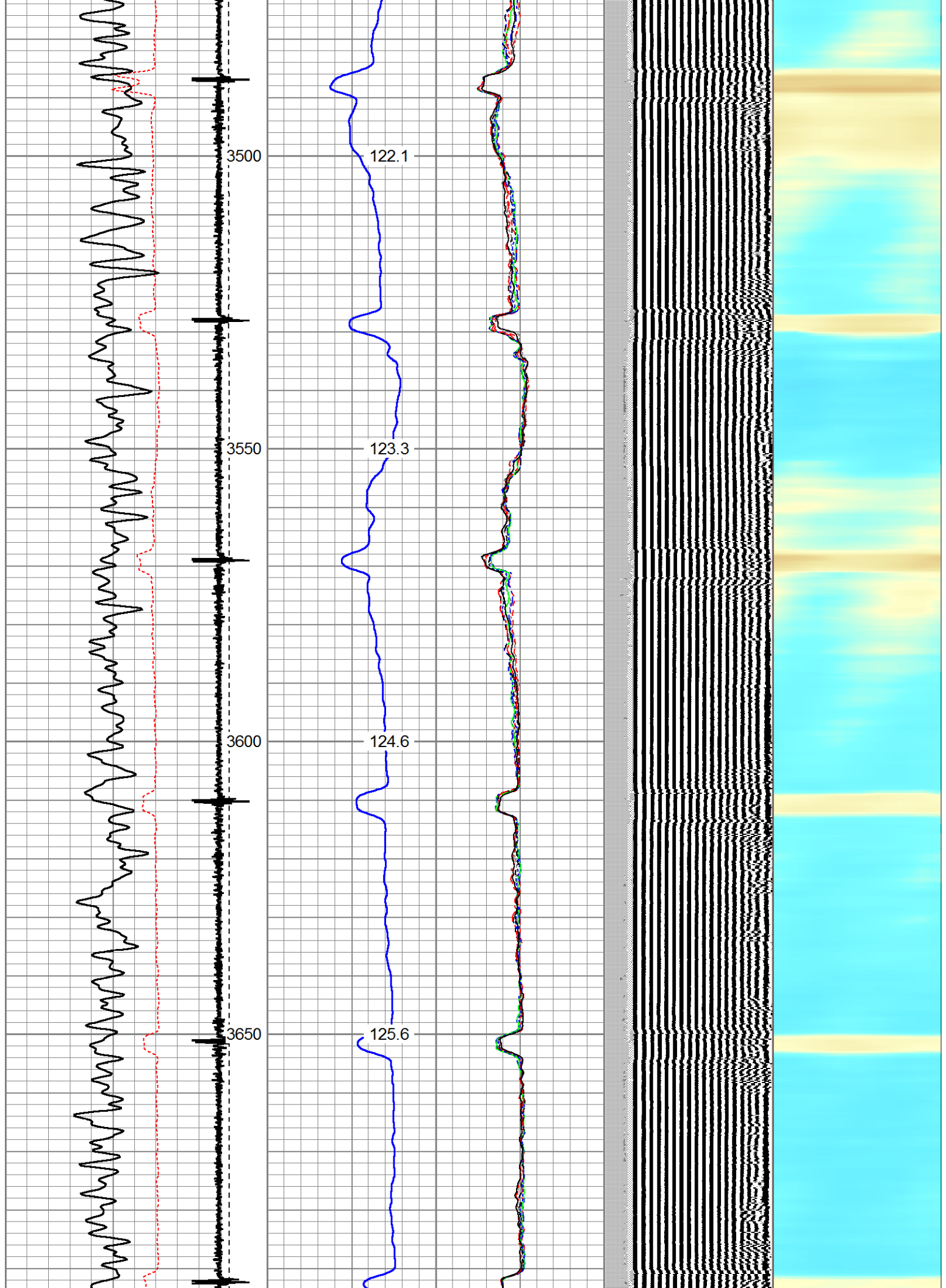


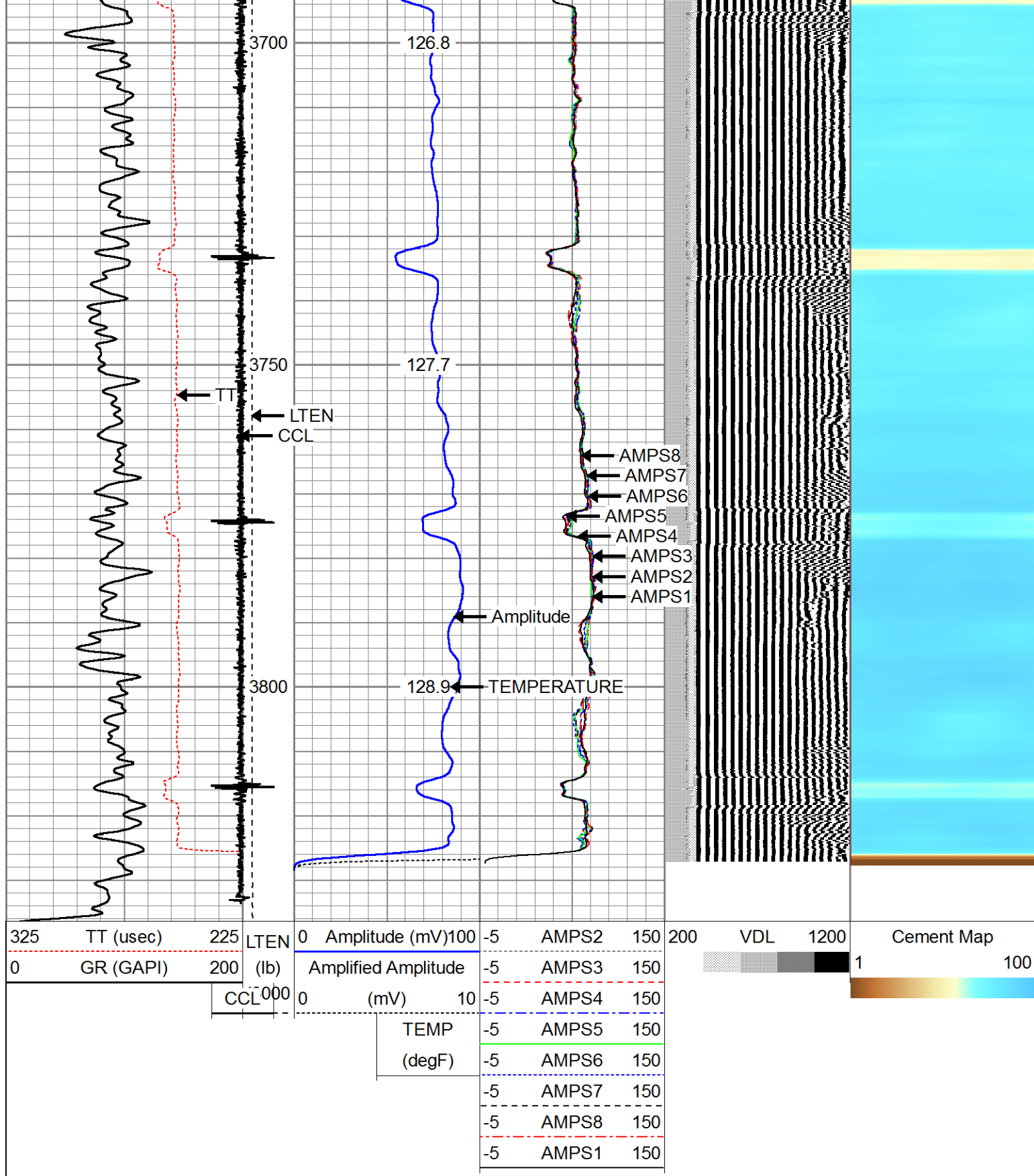












Company ERDAD OIL AND GAS CORP.
Well LEECH #1
Field WATTENBERG
County WELD
State COLORADO