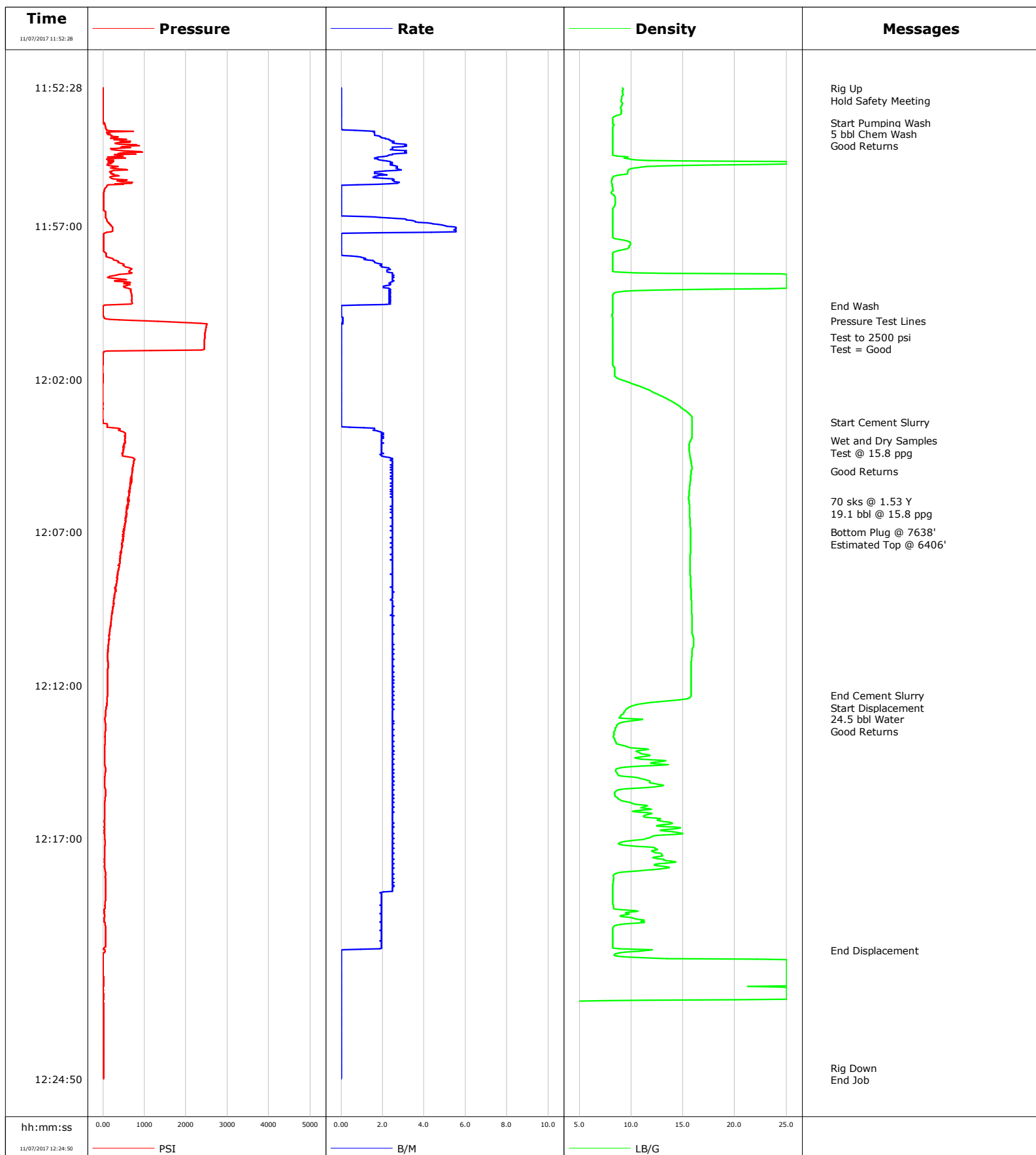


Well Hankins USX N 17-2
Field DJ
Engineer Matt Leiker
Country United States

Client Anadarko
SIR No. DA6T-01805
Job Type Plug
Job Date 11-07-2017



Cementing Service Report

				Customer Anadarko			Job Number DA6T-01805						
Well Hankins USX N 17-2			Location (legal)			Schlumberger Location			Job Start Nov/07/2017				
Field DJ		Formation Name/Type			Deviation deg		Bit Size in		Well MD ft		Well TVD ft		
County Weld		State/Province Colorado			BHP psi		BHST degF		BHCT degF		Pore Press. Gradient lb/gal		
Well Master 0630870031		API/UWI 05123244760000											
Rig Name Leed 724		Drilled For Oil		Service Via Land		Casing/ Liner							
						Depth, ft		Size, in		Weight, lb/ft		Grade	
Offshore Zone		Well Class Old		Well Type Workover									
Drilling Fluid Type		Max. Density lb/gal		Plastic Viscosity cP		Tubing/Drill Pipe							
						T/D		Depth, ft		Size, in		Weight, lb/ft	
												Grade	
												Thread	
Service Line Cementing		Job Type Plug				T		7638.0		2.4		4.7	
								0.0		0.0		J55	
												8RD	
Max. Allowed Tub. Press psi		Max. Allowed Ann. Press psi		WH Connection 2 3/8" 4.7# T/S		Perforations/Open Hole							
						Top, ft		Bottom, ft		shot/ft		No. of Shots	
						ft		ft				Total Interval ft	
						ft		ft				Diameter in	
						ft		ft					
						Treat Down Tubing		Displacement 24.5 bbl		Packer Type		Packer Depth ft	
						Tubing Vol. bbl		Casing Vol. bbl		Annular Vol. bbl		Openhole Vol. bbl	
Casing/Tubing Secured <input checked="" type="checkbox"/>		1 Hole Vol. Circulated prior to Cement <input checked="" type="checkbox"/>				Casing Tools				Squeeze Job			
Lift Pressure psi						Shoe Type				Squeeze Type			
Pipe Rotated <input type="checkbox"/>		Pipe Reciprocated <input type="checkbox"/>				Shoe Depth ft				Tool Type			
No. Centralizers		Top Plugs		Bottom Plugs		Stage Tool Type				Tool Depth ft			
Cement Head Type						Stage Tool Depth ft				Tail Pipe Size in			
Job Scheduled For Nov/07/2017		Arrived on Location Nov/07/2017		Leave Location Nov/07/2017		Collar Type				Tail Pipe Depth ft			
						Collar Depth ft				Sqz. Total Vol. bbl			
Date	Time 24-hr clock	Treating Pressure PSI	Flow Rate B/M	Density LB/G	Volume BBL	Message							
11/07/2017	11:52:28	5	0.0	9.25	0.0	Started Acquisition							
11/07/2017	11:52:30	5	0.0	9.20	0.0	Rig Up							
11/07/2017	11:53:37	23	0.0	8.22	0.0	Start Pumping Wash							
11/07/2017	11:54:00	174	1.6	8.22	0.2	5 bbl Chem Wash							
11/07/2017	11:54:28	407	2.5	8.22	1.3								
11/07/2017	11:56:28	14	0.0	8.22	4.0								
11/07/2017	11:58:28	636	2.2	8.22	7.1								
11/07/2017	11:59:36	14	0.0	8.22	9.7	End Wash							
11/07/2017	12:00:06	1021	0.1	8.22	9.7	Pressure Test Lines							
11/07/2017	12:00:28	2467	0.0	8.22	9.7								
11/07/2017	12:00:38	2454	0.0	8.22	9.7	Test to 2500 psi							
11/07/2017	12:02:28	-5	0.0	12.40	9.7								
11/07/2017	12:03:24	5	0.0	15.88	9.7	Start Cement Slurry							
11/07/2017	12:04:00	526	2.0	15.74	10.5	Wet and Dry Samples							
11/07/2017	12:04:28	471	1.9	15.66	11.5								
11/07/2017	12:05:00	696	2.5	15.79	12.7	Good Returns							
11/07/2017	12:06:00	600	2.5	15.61	15.2	70 sks @ 1.53 Y							
11/07/2017	12:06:28	554	2.5	15.65	16.3								
11/07/2017	12:07:00	490	2.5	15.75	17.6	Bottom Plug @ 7638'							
11/07/2017	12:08:28	357	2.5	15.72	21.3								
11/07/2017	12:10:28	146	2.5	16.02	26.2								

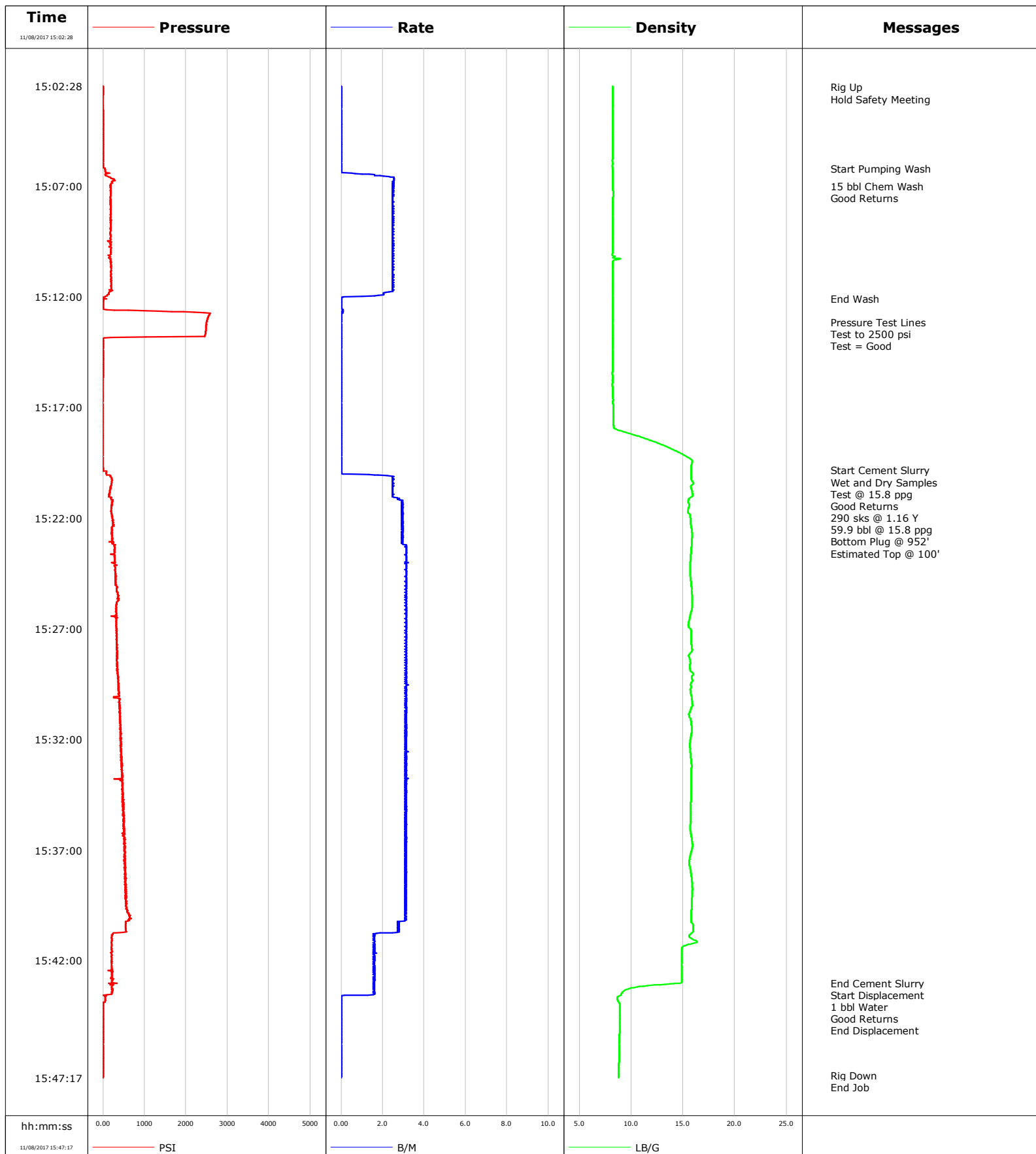
Well			Field		Job Start	Customer		Job Number
Hankins USX N 17-2			DJ		Nov/07/2017	Anadarko		DA6T-01805
Date	Time 24-hr clock	Treating Pressure PSI	Flow Rate B/M	Density LB/G	Volume BBL	Message		
11/07/2017	12:12:20	114	2.5	15.77	30.8	Start Displacement		
11/07/2017	12:12:28	101	2.6	14.62	31.2			
11/07/2017	12:13:00	64	2.5	8.97	32.5	24.5 bbl Water		
11/07/2017	12:14:28	41	2.5	13.17	36.1			
11/07/2017	12:16:28	32	2.5	13.68	41.1			
11/07/2017	12:18:28	69	2.5	8.26	46.0			
11/07/2017	12:20:28	69	2.0	8.24	50.1			
11/07/2017	12:20:39	50	0.0	11.69	50.4	End Displacement		
11/07/2017	12:24:28	14	0.0	0.00	50.4			

Post Job Summary

Average Pump Rates, bbl/min					Volume of Fluid Injected, bbl							
Slurry 2.4	N2	Mud	Maximum Rate 5.5	Total Slurry 19.1	Mud 0.0	Spacer 5.0	N2					
Treating Pressure Summary, psi					Breakdown Fluid							
Maximum 2509	Final 14	Average 256	Bump Plug to	Breakdown	Type	Volume bbl	Density lb/gal					
Avg. N2 Percent %	Designed Slurry Volume 19.1 bbl	Displacement 24.5 bbl	Mix Water Temp 63 degF	Cement Circulated to Surface? <input type="checkbox"/>		Volume bbl						
				Washed Thru Perfs <input type="checkbox"/>		To ft						
Customer or Authorized Representative			Schlumberger Supervisor Matt Leiker			Circulation Lost <input type="checkbox"/>	Job Completed <input checked="" type="checkbox"/>					
						-	-					

Well Hankins USX N 17-2
Field DJ
Engineer Matt Leiker
Country United States

Client Anadarko
SIR No. DA6T-01806
Job Type Plug
Job Date 11-08-2017



				Customer Anadarko		Job Number DA6T-01806	
Well Hankins USX N 17-2 0630870031			Location (legal)		Schlumberger Location		Job Start Nov/08/2017
Field DJ		Formation Name/Type		Deviation deg	Bit Size in	Well MD ft	Well TVD ft
County Weld		State/Province Colorado		BHP psi	BHST degF	BHCT degF	Pore Press. Gradient lb/gal
Well Master 0630870031		API/UWI 05123244760000					
Rig Name	Drilled For Oil	Service Via Land		Casing/ Liner			
				Depth, ft	Size, in	Weight, lb/ft	Grade
Offshore Zone	Well Class Old	Well Type Workover					
Drilling Fluid Type		Max. Density lb/gal	Plastic Viscosity cP	Tubing/Drill Pipe			
				T/D	Depth, ft	Size, in	Weight, lb/ft
							Grade
							Thread
Service Line Cementing	Job Type Plug			T	952.0	2.4	4.7
					0.0	0.0	J55
							8RD
Max. Allowed Tub. Press psi	Max. Allowed Ann. Press psi	WH Connection 2 3/8" 4.7# T/S		Perforations/Open Hole			
				Top, ft	Bottom, ft	shot/ft	No. of Shots
							Total Interval
				ft	ft		ft
				ft	ft		Diameter
				ft	ft		in
Service Instructions Rate and Density Checked Pump 15 bbl Chem Wash 290 sks @ 1.16 Y @ 59.9 bbl @ 15.8 ppg Displace 1 bbl Water Bottom Plug @ 952' Estimated Top @ 100'				Treat Down Tubing	Displacement 1.0 bbl	Packer Type	Packer Depth ft
				Tubing Vol. bbl	Casing Vol. bbl	Annular Vol. bbl	Openhole Vol. bbl
Casing/Tubing Secured <input checked="" type="checkbox"/>		1 Hole Vol. Circulated prior to Cement <input checked="" type="checkbox"/>		Casing Tools		Squeeze Job	
Lift Pressure psi				Shoe Type		Squeeze Type	
Pipe Rotated <input type="checkbox"/>		Pipe Reciprocated <input type="checkbox"/>		Shoe Depth ft		Tool Type	
No. Centralizers		Top Plugs	Bottom Plugs	Stage Tool Type		Tool Depth ft	
Cement Head Type				Stage Tool Depth ft		Tail Pipe Size in	
Job Scheduled For Nov/08/2017		Arrived on Location Nov/08/2017		Leave Location Nov/08/2017		Collar Type	
						Tail Pipe Depth ft	
						Collar Depth ft	
						Sqz. Total Vol. bbl	
Date	Time 24-hr clock	Treating Pressure PSI	Flow Rate B/M	Density LB/G	Volume BBL	Message	
11/08/2017	15:02:28	0	0.0	8.22	0.0	Started Acquisition	
11/08/2017	15:02:31	0	0.0	8.22	0.0	Rig Up	
11/08/2017	15:04:28	0	0.0	8.22	0.0		
11/08/2017	15:06:11	46	0.0	8.20	0.0	Start Pumping Wash	
11/08/2017	15:06:28	60	1.4	8.23	0.0		
11/08/2017	15:07:00	197	2.5	8.22	1.3	15 bbl Chem Wash	
11/08/2017	15:08:28	183	2.6	8.22	5.0		
11/08/2017	15:10:28	183	2.5	8.22	9.9		
11/08/2017	15:12:04	0	0.0	8.22	13.6	End Wash	
11/08/2017	15:12:28	9	0.0	8.22	13.6		
11/08/2017	15:13:09	2499	0.0	8.22	13.6	Pressure Test Lines	
11/08/2017	15:13:12	2499	0.0	8.22	13.6	Test to 2500 psi	
11/08/2017	15:13:13	2495	0.0	8.22	13.6	Test = Good	
11/08/2017	15:14:28	5	0.0	8.22	13.6		
11/08/2017	15:16:28	-5	0.0	8.22	13.6		
11/08/2017	15:18:28	-5	0.0	11.73	13.6		
11/08/2017	15:19:50	5	0.0	15.79	13.6	Start Cement Slurry	
11/08/2017	15:20:00	82	0.1	15.80	13.6	Wet and Dry Samples	
11/08/2017	15:20:28	197	2.5	15.98	14.7		
11/08/2017	15:21:00	137	2.5	15.95	16.0	290 sks @ 1.16 Y	
11/08/2017	15:22:00	238	3.0	15.72	18.9	Bottom Plug @ 952'	

Well Hankins USX N 17-2 0630870031			Field DJ		Job Start Nov/08/2017	Customer Anadarko		Job Number DA6T-01806
Date	Time 24-hr clock	Treating Pressure PSI	Flow Rate B/M	Density LB/G	Volume BBL	Message		
11/08/2017	15:24:28	298	3.2	15.69	26.4			
11/08/2017	15:26:28	320	3.2	15.67	32.7			
11/08/2017	15:28:28	325	3.2	15.70	39.0			
11/08/2017	15:30:28	407	3.2	15.92	45.3			
11/08/2017	15:32:28	444	3.1	15.69	51.5			
11/08/2017	15:34:28	481	3.1	15.77	57.8			
11/08/2017	15:36:28	504	3.1	15.83	64.0			
11/08/2017	15:38:28	540	3.2	15.86	70.2			
11/08/2017	15:40:28	545	2.7	15.98	76.4			
11/08/2017	15:42:28	224	1.5	14.88	79.9			
11/08/2017	15:43:00	243	1.6	14.82	80.7	End Cement Slurry		
11/08/2017	15:43:01	339	1.5	14.68	80.8	Start Displacement		
11/08/2017	15:43:02	142	1.6	14.37	80.8	1 bbl Water		
11/08/2017	15:44:28	5	0.0	8.90	81.6			
11/08/2017	15:46:28	5	0.0	8.83	81.6			

Post Job Summary

Average Pump Rates, bbl/min					Volume of Fluid Injected, bbl					
Slurry 2.8	N2	Mud	Maximum Rate 3.2	Total Slurry 59.9	Mud 0.0	Spacer 15.0	N2			
Treating Pressure Summary, psi					Breakdown Fluid					
Maximum 2586	Final 5	Average 348	Bump Plug to	Breakdown	Type	Volume bbl	Density lb/gal			
Avg. N2 Percent %		Designed Slurry Volume 59.9 bbl		Displacement 1.0 bbl		Cement Circulated to Surface? <input type="checkbox"/>		Volume bbl		
						Washed Thru Perfs <input type="checkbox"/>		To ft		
Customer or Authorized Representative			Schlumberger Supervisor Matt Leiker			Circulation Lost <input type="checkbox"/>	Job Completed <input checked="" type="checkbox"/>			
						-	-			