



Project: Weld County, CO NAD 83  
Site: Anschutz Equus Farms 4-62-33\_34 SWNW Pad [GOOD]  
Well: Anschutz Equus Farms 4-62-32-0916C  
Wellbore: OH  
Design: OH

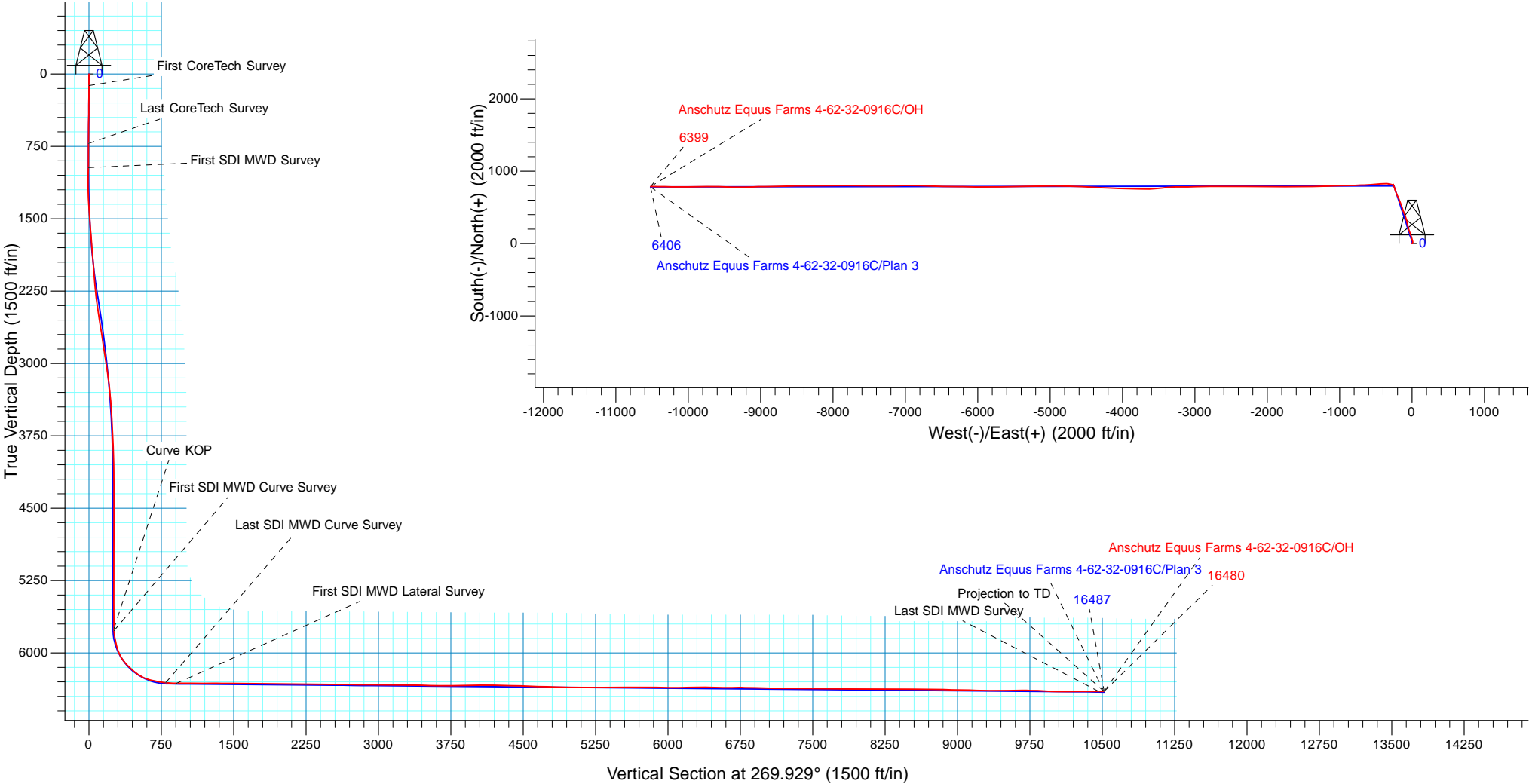


WELL DETAILS: Anschutz Equus Farms 4-62-32-0916C			
GL 4657.3' & KB 20' @ 4677.30ft (Savanna 802)	4657.30		
Northing	Easting	Latitude	Longitude
1343489.76	3324467.59	40° 16' 13.580 N	104° 20' 13.841 W

Design: OH (Anschutz Equus Farms 4-62-32-0916C/OH)	
Created By: Seth Burstad	Date: 10-16-2017

PROJECT DETAILS: Weld County, CO NAD 83	
Geodetic System:	US State Plane 1983
Datum:	North American Datum 1983
Ellipsoid:	GRS 1980
Zone:	Colorado Northern Zone
System Datum:	Mean Sea Level
Local North:	True

ANNOTATIONS									
TVD	MD	Inc	Azi	+N/-S	+E/-W	Vsect	Departure	Annotation	
120.00	120.00	0.29	72.090	0.09	0.29	-0.29	0.30	First CoreTech Survey	
719.98	720.00	0.38	35.260	2.22	4.02	-4.02	4.73	Last CoreTech Survey	
970.90	971.00	2.30	28.110	7.34	6.87	-6.88	10.60	First SDI MWD Survey	
5749.04	5887.00	2.49	298.479	808.60	-259.75	258.75	887.66	Curve KOP	
5771.01	5909.00	3.19	295.150	809.09	-260.73	259.73	888.39	First SDI MWD Curve Survey	
6309.76	6750.00	83.23	268.360	804.85	-795.22	794.22	1425.99	Last SDI MWD Curve Survey	
6315.57	6863.00	90.87	268.930	802.18	-907.95	906.96	1538.76	First SDI MWD Lateral Survey	
6399.58	16424.00	90.47	271.210	787.92	-10464.16	10463.18	11098.38	Last SDI MWD Survey	
6399.12	16480.00	90.47	271.210	789.10	-10520.15	10519.16	11154.38	Projection to TD	





**Bill Barrett Corporation**

## **Bill Barrett Corp.**

**Weld County, CO NAD 83**

**Anschutz Equus Farms 4-62-33\_34 SWNW Pad [GOOD]**

**Anschutz Equus Farms 4-62-32-0916C**

**OH**

**Design: OH**

## **Standard Survey Report**

**16 October, 2017**



**Scientific Drilling**

[www.scientificdrilling.com](http://www.scientificdrilling.com)



<b>Company:</b>	Bill Barrett Corp.	<b>Local Co-ordinate Reference:</b>	Well Anschutz Equus Farms 4-62-32-0916C
<b>Project:</b>	Weld County, CO NAD 83	<b>TVD Reference:</b>	GL 4657.3' & KB 20' @ 4677.30ft (Savanna 802)
<b>Site:</b>	Anschutz Equus Farms 4-62-33_34 SWNW Pad [GOOD]	<b>MD Reference:</b>	GL 4657.3' & KB 20' @ 4677.30ft (Savanna 802)
<b>Well:</b>	Anschutz Equus Farms 4-62-32-0916C	<b>North Reference:</b>	True
<b>Wellbore:</b>	OH	<b>Survey Calculation Method:</b>	Minimum Curvature
<b>Design:</b>	OH	<b>Database:</b>	Casper District

<b>Project</b>	Weld County, CO NAD 83		
<b>Map System:</b>	US State Plane 1983	<b>System Datum:</b>	Mean Sea Level
<b>Geo Datum:</b>	North American Datum 1983		
<b>Map Zone:</b>	Colorado Northern Zone		

Site	Anschutz Equus Farms 4-62-33_34 SWNW Pad [GOOD], Site Center : Anschutz Equus Farms 4-62-32-0916C				
Site Position:		Northing:	1,343,489.80 usft	Latitude:	40° 16' 13.580 N
From:	Lat/Long	Easting:	3,324,467.60 usft	Longitude:	104° 20' 13.841 W
Position Uncertainty:	0.00 ft	Slot Radius:	13.200 in	Grid Convergence:	0.75 °

Well	Anschutz Equus Farms 4-62-32-0916C, 1901' FNL 345' FWL Sec 33 T4N R62W					
Well Position	+N/-S	0.00 ft	Northing:	1,343,489.76 usft	Latitude:	40° 16' 13.580 N
	+E/-W	0.00 ft	Easting:	3,324,467.60 usft	Longitude:	104° 20' 13.841 W
Position Uncertainty		0.00 ft	Wellhead Elevation:	0.00 ft	Ground Level:	4,657.30 ft

<b>Wellbore</b>	OH				
<b>Magnetics</b>	<b>Model Name</b>	<b>Sample Date</b>	<b>Declination (°)</b>	<b>Dip Angle (°)</b>	<b>Field Strength (nT)</b>
	BGGM2016	4/13/2017	8.14	66.85	52,412
	HDGM	10/6/2017	8.25	66.93	52,336

Design	OH				
Audit Notes:					
Version:	1.0	Phase:	ACTUAL	Tie On Depth:	0.00
Vertical Section:	Depth From (TVD) (ft)	+N/-S (ft)	+E/-W (ft)	Direction (°)	
	0.00	0.00	0.00	269.929	

<b>Survey Program</b>	<b>Date</b>	10/16/2017			
<b>From (ft)</b>	<b>To (ft)</b>	<b>Survey (Wellbore)</b>	<b>Tool Name</b>	<b>Description</b>	
120.00	720.00	Survey #1 - Surface Gyro (OH)	Standard Keeper	Standard Wireline Keeper ver 1.0.2	
971.00	6,750.00	Survey #2 - Intermediate (OH)	OWSG MWD	OWSG MWD - Standard	
6,863.00	16,480.00	Survey #3 - Lateral (OH)	OWSG MWD	OWSG MWD - Standard	

<b>Survey</b>										
<b>Measured Depth (ft)</b>	<b>Inclination (°)</b>	<b>Azimuth (°)</b>	<b>Vertical Depth (ft)</b>	<b>+N/-S (ft)</b>	<b>+E/-W (ft)</b>	<b>Vertical Section (ft)</b>	<b>Dogleg Rate (°/100ft)</b>	<b>Build Rate (°/100ft)</b>	<b>Turn Rate (°/100ft)</b>	
0.00	0.00	0.000	0.00	0.00	0.00	0.00	0.00	0.00	0.00	
120.00	0.29	72.090	120.00	0.09	0.29	-0.29	0.24	0.24	0.00	
<b>First CoreTech Survey</b>										
220.00	0.49	43.400	220.00	0.48	0.82	-0.82	0.27	0.20	-28.69	
320.00	0.47	65.100	319.99	0.97	1.49	-1.49	0.18	-0.02	21.70	
420.00	0.36	81.520	419.99	1.18	2.17	-2.17	0.16	-0.11	16.42	
520.00	0.31	70.680	519.99	1.32	2.74	-2.74	0.08	-0.05	-10.84	

<b>Company:</b>	Bill Barrett Corp.	<b>Local Co-ordinate Reference:</b>	Well Anschutz Equus Farms 4-62-32-0916C
<b>Project:</b>	Weld County, CO NAD 83	<b>TVD Reference:</b>	GL 4657.3' & KB 20' @ 4677.30ft (Savanna 802)
<b>Site:</b>	Anschutz Equus Farms 4-62-33_34 SWNW Pad [GOOD]	<b>MD Reference:</b>	GL 4657.3' & KB 20' @ 4677.30ft (Savanna 802)
<b>Well:</b>	Anschutz Equus Farms 4-62-32-0916C	<b>North Reference:</b>	True
<b>Wellbore:</b>	OH	<b>Survey Calculation Method:</b>	Minimum Curvature
<b>Design:</b>	OH	<b>Database:</b>	Casper District

Survey										
Measured Depth (ft)	Inclination (°)	Azimuth (°)	Vertical Depth (ft)	+N/-S (ft)	+E/-W (ft)	Vertical Section (ft)	Dogleg Rate (°/100ft)	Build Rate (°/100ft)	Turn Rate (°/100ft)	
620.00	0.57	57.070	619.99	1.68	3.41	-3.41	0.28	0.26	-13.61	
720.00	0.38	35.260	719.98	2.22	4.02	-4.02	0.26	-0.19	-21.81	
<b>Last CoreTech Survey</b>										
971.00	2.30	28.110	970.90	7.34	6.87	-6.88	0.77	0.76	-2.85	
<b>First SDI MWD Survey</b>										
1,063.00	3.96	14.370	1,062.76	12.05	8.53	-8.55	1.97	1.80	-14.93	
1,154.00	6.67	358.200	1,153.37	20.38	9.15	-9.17	3.37	2.98	-17.77	
1,246.00	8.69	348.080	1,244.54	32.52	7.54	-7.58	2.63	2.20	-11.00	
1,337.00	11.83	341.890	1,334.08	48.12	3.22	-3.28	3.65	3.45	-6.80	
1,428.00	13.48	345.420	1,422.87	67.25	-2.35	2.26	2.00	1.81	3.88	
1,520.00	12.60	341.840	1,512.49	87.16	-8.18	8.07	1.30	-0.96	-3.89	
1,611.00	13.05	339.500	1,601.23	106.22	-14.87	14.74	0.76	0.49	-2.57	
1,702.00	12.95	339.500	1,689.89	125.39	-22.04	21.88	0.11	-0.11	0.00	
1,793.00	13.83	343.910	1,778.42	145.39	-28.62	28.44	1.48	0.97	4.85	
1,884.00	13.96	340.480	1,866.76	166.19	-35.30	35.10	0.92	0.14	-3.77	
1,976.00	15.47	341.200	1,955.74	188.27	-42.97	42.73	1.65	1.64	0.78	
2,067.00	17.62	343.620	2,042.97	212.97	-50.76	50.50	2.48	2.36	2.66	
2,159.00	19.98	348.630	2,130.06	241.75	-57.79	57.49	3.11	2.57	5.45	
2,250.00	21.99	348.280	2,215.02	273.67	-64.32	63.98	2.21	2.21	-0.38	
2,341.00	25.60	344.600	2,298.27	309.32	-73.00	72.62	4.29	3.97	-4.04	
2,435.00	25.66	342.970	2,383.03	348.36	-84.35	83.92	0.75	0.06	-1.73	
2,528.00	24.71	340.380	2,467.19	385.93	-96.78	96.30	1.56	-1.02	-2.78	
2,622.00	23.91	339.490	2,552.85	422.28	-110.05	109.53	0.94	-0.85	-0.95	
2,717.00	24.37	339.330	2,639.54	458.65	-123.71	123.15	0.49	0.48	-0.17	
2,810.00	25.64	341.310	2,723.83	495.66	-136.94	136.32	1.64	1.37	2.13	
2,903.00	25.21	341.040	2,807.82	533.45	-149.82	149.16	0.48	-0.46	-0.29	
2,997.00	23.02	339.040	2,893.61	569.55	-162.90	162.19	2.49	-2.33	-2.13	
3,091.00	21.20	337.320	2,980.70	602.40	-176.03	175.28	2.05	-1.94	-1.83	
3,185.00	19.52	336.300	3,068.82	632.47	-188.90	188.11	1.83	-1.79	-1.09	
3,280.00	17.83	334.320	3,158.82	660.11	-201.58	200.76	1.90	-1.78	-2.08	
3,373.00	14.64	337.520	3,248.10	683.81	-212.25	211.40	3.56	-3.43	3.44	
3,468.00	13.63	336.670	3,340.22	705.18	-221.27	220.40	1.09	-1.06	-0.89	
3,561.00	12.34	341.540	3,430.84	724.67	-228.76	227.86	1.82	-1.39	5.24	
3,655.00	11.95	341.910	3,522.74	743.45	-234.96	234.04	0.42	-0.41	0.39	
3,749.00	10.33	342.750	3,614.97	760.75	-240.48	239.54	1.73	-1.72	0.89	
3,842.00	8.97	344.250	3,706.65	775.69	-244.92	243.96	1.49	-1.46	1.61	
3,936.00	7.89	340.010	3,799.63	788.81	-249.12	248.14	1.32	-1.15	-4.51	
4,030.00	6.18	338.350	3,892.92	799.57	-253.19	252.20	1.83	-1.82	-1.77	
4,124.00	4.86	339.980	3,986.48	808.02	-256.42	255.42	1.41	-1.40	1.73	
4,219.00	2.91	349.620	4,081.26	814.17	-258.23	257.22	2.16	-2.05	10.15	
4,312.00	1.23	333.920	4,174.20	817.39	-259.09	258.08	1.89	-1.81	-16.88	
4,407.00	0.55	235.100	4,269.19	818.04	-259.92	258.90	1.50	-0.72	-104.02	
4,501.00	0.47	202.520	4,363.19	817.43	-260.43	259.42	0.32	-0.09	-34.66	

<b>Company:</b>	Bill Barrett Corp.	<b>Local Co-ordinate Reference:</b>	Well Anschutz Equus Farms 4-62-32-0916C
<b>Project:</b>	Weld County, CO NAD 83	<b>TVD Reference:</b>	GL 4657.3' & KB 20' @ 4677.30ft (Savanna 802)
<b>Site:</b>	Anschutz Equus Farms 4-62-33_34 SWNW Pad [GOOD]	<b>MD Reference:</b>	GL 4657.3' & KB 20' @ 4677.30ft (Savanna 802)
<b>Well:</b>	Anschutz Equus Farms 4-62-32-0916C	<b>North Reference:</b>	True
<b>Wellbore:</b>	OH	<b>Survey Calculation Method:</b>	Minimum Curvature
<b>Design:</b>	OH	<b>Database:</b>	Casper District

Survey										
Measured Depth (ft)	Inclination (°)	Azimuth (°)	Vertical Depth (ft)	+N/-S (ft)	+E/-W (ft)	Vertical Section (ft)	Dogleg Rate (°/100ft)	Build Rate (°/100ft)	Turn Rate (°/100ft)	
4,595.00	0.65	166.990	4,457.18	816.55	-260.46	259.45	0.41	0.19	-37.80	
4,689.00	0.98	165.740	4,551.17	815.26	-260.14	259.13	0.35	0.35	-1.33	
4,782.00	1.30	171.470	4,644.15	813.44	-259.79	258.78	0.36	0.34	6.16	
4,876.00	1.29	176.480	4,738.13	811.33	-259.57	258.56	0.12	-0.01	5.33	
4,970.00	1.17	162.390	4,832.11	809.36	-259.21	258.21	0.35	-0.13	-14.99	
5,065.00	0.99	181.500	4,927.09	807.62	-258.94	257.94	0.42	-0.19	20.12	
5,159.00	0.62	174.520	5,021.08	806.30	-258.91	257.91	0.41	-0.39	-7.43	
5,253.00	0.54	163.250	5,115.08	805.37	-258.74	257.74	0.15	-0.09	-11.99	
5,346.00	0.28	166.900	5,208.07	804.73	-258.56	257.56	0.28	-0.28	3.92	
5,440.00	0.28	17.040	5,302.07	804.72	-258.44	257.44	0.58	0.00	-159.43	
5,533.00	0.46	359.410	5,395.07	805.31	-258.38	257.38	0.23	0.19	-18.96	
5,627.00	0.42	352.300	5,489.07	806.03	-258.43	257.43	0.07	-0.04	-7.56	
5,722.00	0.35	353.890	5,584.07	806.66	-258.51	257.51	0.07	-0.07	1.67	
5,815.00	0.64	9.680	5,677.06	807.46	-258.45	257.45	0.34	0.31	16.98	
5,887.00	2.49	298.479	5,749.04	808.60	-259.75	258.75	3.28	2.57	-98.89	
<b>Curve KOP</b>										
5,909.00	3.19	295.150	5,771.01	809.09	-260.73	259.73	3.28	3.19	-15.13	
<b>First SDI MWD Curve Survey</b>										
6,003.00	11.80	283.320	5,864.12	812.42	-272.47	271.46	9.26	9.16	-12.59	
6,096.00	17.09	286.260	5,954.15	818.44	-294.86	293.84	5.74	5.69	3.16	
6,190.00	29.57	278.470	6,040.32	825.76	-331.21	330.19	13.65	13.28	-8.29	
6,284.00	43.19	268.380	6,115.88	828.28	-386.62	385.59	15.78	14.49	-10.73	
6,377.00	49.06	263.690	6,180.33	823.51	-453.42	452.40	7.28	6.31	-5.04	
6,471.00	58.06	266.380	6,236.12	817.08	-528.68	527.67	9.85	9.57	2.86	
6,565.00	73.38	267.320	6,274.65	812.42	-613.98	612.97	16.32	16.30	1.00	
6,660.00	79.92	267.380	6,296.58	808.15	-706.26	705.26	6.88	6.88	0.06	
6,750.00	83.23	268.360	6,309.76	804.85	-795.22	794.22	3.83	3.68	1.09	
<b>Last SDI MWD Curve Survey</b>										
6,863.00	90.87	268.930	6,315.57	802.18	-907.95	906.96	6.78	6.76	0.50	
<b>First SDI MWD Lateral Survey</b>										
6,957.00	89.66	268.350	6,315.14	799.95	-1,001.92	1,000.93	1.43	-1.29	-0.62	
7,051.00	89.80	267.520	6,315.58	796.57	-1,095.86	1,094.87	0.90	0.15	-0.88	
7,145.00	89.66	268.820	6,316.02	793.56	-1,189.81	1,188.83	1.39	-0.15	1.38	
7,238.00	90.44	268.410	6,315.94	791.32	-1,282.78	1,281.80	0.95	0.84	-0.44	
7,332.00	89.30	269.070	6,316.16	789.25	-1,376.76	1,375.78	1.40	-1.21	0.70	
7,426.00	90.70	269.140	6,316.16	787.78	-1,470.74	1,469.77	1.49	1.49	0.07	
7,520.00	88.89	269.100	6,316.49	786.34	-1,564.73	1,563.75	1.93	-1.93	-0.04	
7,614.00	88.76	268.860	6,318.42	784.67	-1,658.69	1,657.72	0.29	-0.14	-0.26	
7,708.00	89.09	270.890	6,320.18	784.46	-1,752.67	1,751.70	2.19	0.35	2.16	
7,802.00	89.20	271.030	6,321.59	786.03	-1,846.65	1,845.67	0.19	0.12	0.15	
7,897.00	89.63	270.880	6,322.56	787.62	-1,941.63	1,940.65	0.48	0.45	-0.16	
7,991.00	89.73	270.510	6,323.08	788.76	-2,035.62	2,034.64	0.41	0.11	-0.39	
8,085.00	90.37	270.750	6,323.00	789.79	-2,129.61	2,128.63	0.73	0.68	0.26	

<b>Company:</b>	Bill Barrett Corp.	<b>Local Co-ordinate Reference:</b>	Well Anschutz Equus Farms 4-62-32-0916C
<b>Project:</b>	Weld County, CO NAD 83	<b>TVD Reference:</b>	GL 4657.3' & KB 20' @ 4677.30ft (Savanna 802)
<b>Site:</b>	Anschutz Equus Farms 4-62-33_34 SWNW Pad [GOOD]	<b>MD Reference:</b>	GL 4657.3' & KB 20' @ 4677.30ft (Savanna 802)
<b>Well:</b>	Anschutz Equus Farms 4-62-32-0916C	<b>North Reference:</b>	True
<b>Wellbore:</b>	OH	<b>Survey Calculation Method:</b>	Minimum Curvature
<b>Design:</b>	OH	<b>Database:</b>	Casper District

Survey									
Measured Depth (ft)	Inclination (°)	Azimuth (°)	Vertical Depth (ft)	+N/-S (ft)	+E/-W (ft)	Vertical Section (ft)	Dogleg Rate (°/100ft)	Build Rate (°/100ft)	Turn Rate (°/100ft)
8,179.00	88.69	269.030	6,323.77	789.61	-2,223.60	2,222.62	2.56	-1.79	-1.83
8,273.00	88.89	269.340	6,325.76	788.27	-2,317.57	2,316.59	0.39	0.21	0.33
8,367.00	88.99	269.830	6,327.50	787.59	-2,411.55	2,410.58	0.53	0.11	0.52
8,461.00	90.03	270.430	6,328.30	787.81	-2,505.55	2,504.57	1.28	1.11	0.64
8,554.00	89.80	271.440	6,328.44	789.33	-2,598.53	2,597.55	1.11	-0.25	1.09
8,648.00	89.70	270.500	6,328.85	790.92	-2,692.52	2,691.54	1.01	-0.11	-1.00
8,743.00	89.50	268.720	6,329.51	790.27	-2,787.51	2,786.53	1.89	-0.21	-1.87
8,837.00	89.53	269.390	6,330.31	788.72	-2,881.49	2,880.51	0.71	0.03	0.71
8,931.00	89.53	267.570	6,331.08	786.23	-2,975.45	2,974.48	1.94	0.00	-1.94
9,025.00	88.89	269.700	6,332.37	783.99	-3,069.41	3,068.44	2.37	-0.68	2.27
9,119.00	89.60	270.990	6,333.61	784.55	-3,163.40	3,162.43	1.57	0.76	1.37
9,213.00	89.56	268.130	6,334.30	783.83	-3,257.38	3,256.41	3.04	-0.04	-3.04
9,307.00	89.40	265.020	6,335.15	778.22	-3,351.20	3,350.23	3.31	-0.17	-3.31
9,401.00	88.79	263.810	6,336.64	769.07	-3,444.74	3,443.79	1.44	-0.65	-1.29
9,494.00	88.46	265.480	6,338.87	760.39	-3,537.31	3,536.36	1.83	-0.35	1.80
9,588.00	89.03	268.090	6,340.93	755.12	-3,631.13	3,630.19	2.84	0.61	2.78
9,682.00	91.04	270.920	6,340.87	754.31	-3,725.11	3,724.17	3.69	2.14	3.01
9,775.00	91.41	270.640	6,338.88	755.58	-3,818.08	3,817.14	0.50	0.40	-0.30
9,870.00	90.84	272.060	6,337.02	757.82	-3,913.03	3,912.09	1.61	-0.60	1.49
9,963.00	90.30	271.620	6,336.09	760.80	-4,005.98	4,005.03	0.75	-0.58	-0.47
10,057.00	89.56	272.410	6,336.21	764.11	-4,099.92	4,098.97	1.15	-0.79	0.84
10,152.00	89.66	272.580	6,336.86	768.24	-4,194.83	4,193.87	0.21	0.11	0.18
10,246.00	88.69	272.330	6,338.21	772.27	-4,288.73	4,287.77	1.07	-1.03	-0.27
10,339.00	88.79	273.030	6,340.25	776.61	-4,381.60	4,380.64	0.76	0.11	0.75
10,430.00	88.22	273.020	6,342.63	781.42	-4,472.45	4,471.47	0.63	-0.63	-0.01
10,521.00	87.69	272.220	6,345.88	785.57	-4,563.29	4,562.31	1.05	-0.58	-0.88
10,612.00	88.33	272.300	6,349.04	789.16	-4,654.17	4,653.18	0.71	0.70	0.09
10,704.00	88.59	273.130	6,351.51	793.52	-4,746.03	4,745.04	0.95	0.28	0.90
10,795.00	88.49	270.370	6,353.83	796.29	-4,836.95	4,835.96	3.03	-0.11	-3.03
10,886.00	87.99	269.840	6,356.62	796.46	-4,927.90	4,926.91	0.80	-0.55	-0.58
10,978.00	88.63	269.190	6,359.34	795.68	-5,019.86	5,018.87	0.99	0.70	-0.71
11,068.00	90.34	269.030	6,360.14	794.28	-5,109.84	5,108.85	1.91	1.90	-0.18
11,159.00	90.64	268.610	6,359.37	792.41	-5,200.82	5,199.83	0.57	0.33	-0.46
11,251.00	91.34	268.090	6,357.78	789.76	-5,292.77	5,291.78	0.95	0.76	-0.57
11,342.00	90.03	269.470	6,356.69	787.82	-5,383.73	5,382.75	2.09	-1.44	1.52
11,434.00	89.63	269.300	6,356.96	786.84	-5,475.73	5,474.75	0.47	-0.43	-0.18
11,525.00	90.54	270.340	6,356.83	786.55	-5,566.73	5,565.75	1.52	1.00	1.14
11,616.00	89.53	269.020	6,356.77	786.04	-5,657.72	5,656.74	1.83	-1.11	-1.45
11,707.00	89.73	268.670	6,357.36	784.21	-5,748.70	5,747.72	0.44	0.22	-0.38
11,799.00	88.96	269.640	6,358.41	782.85	-5,840.68	5,839.71	1.35	-0.84	1.05
11,890.00	89.00	268.890	6,360.03	781.68	-5,931.66	5,930.69	0.83	0.04	-0.82
11,981.00	90.30	271.200	6,360.59	781.76	-6,022.65	6,021.68	2.91	1.43	2.54
12,072.00	90.17	270.960	6,360.21	783.47	-6,113.63	6,112.66	0.30	-0.14	-0.26

<b>Company:</b>	Bill Barrett Corp.	<b>Local Co-ordinate Reference:</b>	Well Anschutz Equus Farms 4-62-32-0916C
<b>Project:</b>	Weld County, CO NAD 83	<b>TVD Reference:</b>	GL 4657.3' & KB 20' @ 4677.30ft (Savanna 802)
<b>Site:</b>	Anschutz Equus Farms 4-62-33_34 SWNW Pad [GOOD]	<b>MD Reference:</b>	GL 4657.3' & KB 20' @ 4677.30ft (Savanna 802)
<b>Well:</b>	Anschutz Equus Farms 4-62-32-0916C	<b>North Reference:</b>	True
<b>Wellbore:</b>	OH	<b>Survey Calculation Method:</b>	Minimum Curvature
<b>Design:</b>	OH	<b>Database:</b>	Casper District

Survey									
Measured Depth (ft)	Inclination (°)	Azimuth (°)	Vertical Depth (ft)	+N/-S (ft)	+E/-W (ft)	Vertical Section (ft)	Dogleg Rate (°/100ft)	Build Rate (°/100ft)	Turn Rate (°/100ft)
12,164.00	91.38	271.670	6,358.97	785.58	-6,205.60	6,204.62	1.52	1.32	0.77
12,255.00	90.03	269.730	6,357.85	786.69	-6,296.58	6,295.60	2.60	-1.48	-2.13
12,346.00	90.40	270.380	6,357.51	786.78	-6,387.58	6,386.60	0.82	0.41	0.71
12,438.00	88.79	272.340	6,358.16	788.96	-6,479.54	6,478.56	2.76	-1.75	2.13
12,529.00	89.06	272.170	6,359.86	792.54	-6,570.45	6,569.47	0.35	0.30	-0.19
12,620.00	91.17	273.370	6,359.68	796.94	-6,661.34	6,660.35	2.67	2.32	1.32
12,712.00	89.53	271.070	6,359.12	800.50	-6,753.26	6,752.26	3.07	-1.78	-2.50
12,803.00	88.32	269.850	6,360.83	801.23	-6,844.24	6,843.24	1.89	-1.33	-1.34
12,895.00	88.36	269.360	6,363.49	800.60	-6,936.20	6,935.20	0.53	0.04	-0.53
12,986.00	88.49	269.500	6,365.99	799.70	-7,027.16	7,026.16	0.21	0.14	0.15
13,076.00	89.70	269.940	6,367.42	799.26	-7,117.14	7,116.15	1.43	1.34	0.49
13,168.00	90.30	269.750	6,367.42	799.01	-7,209.14	7,208.15	0.68	0.65	-0.21
13,259.00	89.10	269.780	6,367.89	798.63	-7,300.14	7,299.15	1.32	-1.32	0.03
13,350.00	90.03	270.570	6,368.58	798.91	-7,391.14	7,390.14	1.34	1.02	0.87
13,442.00	89.23	269.390	6,369.18	798.88	-7,483.13	7,482.14	1.55	-0.87	-1.28
13,533.00	89.33	269.780	6,370.32	798.22	-7,574.12	7,573.13	0.44	0.11	0.43
13,624.00	89.26	270.840	6,371.44	798.71	-7,665.11	7,664.12	1.17	-0.08	1.16
13,716.00	89.56	271.810	6,372.39	800.84	-7,757.08	7,756.08	1.10	0.33	1.05
13,807.00	89.13	269.470	6,373.43	801.86	-7,848.06	7,847.06	2.61	-0.47	-2.57
13,898.00	89.60	270.580	6,374.44	801.90	-7,939.06	7,938.06	1.32	0.52	1.22
13,990.00	89.53	269.970	6,375.13	802.34	-8,031.05	8,030.05	0.67	-0.08	-0.66
14,082.00	89.66	269.220	6,375.79	801.69	-8,123.05	8,122.05	0.83	0.14	-0.82
14,173.00	89.60	268.660	6,376.37	800.00	-8,214.03	8,213.03	0.62	-0.07	-0.62
14,264.00	91.01	269.410	6,375.89	798.47	-8,305.01	8,304.02	1.75	1.55	0.82
14,356.00	89.80	269.210	6,375.24	797.36	-8,397.00	8,396.01	1.33	-1.32	-0.22
14,447.00	89.80	268.540	6,375.56	795.58	-8,487.98	8,486.99	0.74	0.00	-0.74
14,538.00	89.06	268.560	6,376.46	793.27	-8,578.95	8,577.96	0.81	-0.81	0.02
14,628.00	90.30	268.740	6,376.96	791.15	-8,668.92	8,667.93	1.39	1.38	0.20
14,720.00	88.46	269.200	6,377.96	789.50	-8,760.90	8,759.91	2.06	-2.00	0.50
14,811.00	88.52	269.120	6,380.36	788.17	-8,851.85	8,850.87	0.11	0.07	-0.09
14,902.00	88.86	269.270	6,382.44	786.89	-8,942.82	8,941.84	0.41	0.37	0.16
14,992.00	88.66	268.520	6,384.39	785.15	-9,032.78	9,031.80	0.86	-0.22	-0.83
15,084.00	88.76	267.920	6,386.46	782.30	-9,124.71	9,123.74	0.66	0.11	-0.65
15,175.00	88.12	269.160	6,388.93	779.98	-9,215.65	9,214.68	1.53	-0.70	1.36
15,266.00	88.46	270.140	6,391.65	779.42	-9,306.61	9,305.63	1.14	0.37	1.08
15,357.00	90.80	271.800	6,392.24	780.96	-9,397.58	9,396.61	3.15	2.57	1.82
15,449.00	90.54	271.230	6,391.16	783.40	-9,489.54	9,488.56	0.68	-0.28	-0.62
15,540.00	91.68	271.250	6,389.40	785.37	-9,580.50	9,579.52	1.25	1.25	0.02
15,631.00	89.70	270.060	6,388.30	786.41	-9,671.48	9,670.50	2.54	-2.18	-1.31
15,723.00	88.56	269.720	6,389.70	786.23	-9,763.47	9,762.49	1.29	-1.24	-0.37
15,815.00	87.79	269.130	6,392.63	785.31	-9,855.42	9,854.44	1.05	-0.84	-0.64
15,908.00	86.54	269.110	6,397.23	783.88	-9,948.29	9,947.31	1.34	-1.34	-0.02

<b>Company:</b>	Bill Barrett Corp.	<b>Local Co-ordinate Reference:</b>	Well Anschutz Equus Farms 4-62-32-0916C
<b>Project:</b>	Weld County, CO NAD 83	<b>TVD Reference:</b>	GL 4657.3' & KB 20' @ 4677.30ft (Savanna 802)
<b>Site:</b>	Anschutz Equus Farms 4-62-33_34 SWNW Pad [GOOD]	<b>MD Reference:</b>	GL 4657.3' & KB 20' @ 4677.30ft (Savanna 802)
<b>Well:</b>	Anschutz Equus Farms 4-62-32-0916C	<b>North Reference:</b>	True
<b>Wellbore:</b>	OH	<b>Survey Calculation Method:</b>	Minimum Curvature
<b>Design:</b>	OH	<b>Database:</b>	Casper District

Survey									
Measured Depth (ft)	Inclination (°)	Azimuth (°)	Vertical Depth (ft)	+N/-S (ft)	+E/-W (ft)	Vertical Section (ft)	Dogleg Rate (°/100ft)	Build Rate (°/100ft)	Turn Rate (°/100ft)
16,002.00	89.26	270.010	6,400.67	783.16	-10,042.22	10,041.24	3.05	2.89	0.96
16,096.00	90.30	270.650	6,401.03	783.70	-10,136.21	10,135.23	1.30	1.11	0.68
16,190.00	91.44	270.870	6,399.61	784.95	-10,230.19	10,229.21	1.24	1.21	0.23
16,284.00	89.33	270.500	6,398.98	786.07	-10,324.18	10,323.20	2.28	-2.24	-0.39
16,378.00	89.80	270.780	6,399.69	787.12	-10,418.17	10,417.19	0.58	0.50	0.30
16,424.00	90.47	271.210	6,399.58	787.92	-10,464.16	10,463.18	1.73	1.46	0.93
<b>Last SDI MWD Survey</b>									
16,480.00	90.47	271.210	6,399.12	789.10	-10,520.15	10,519.16	0.00	0.00	0.00
<b>Projection to TD</b>									

Design Annotations				
Measured Depth (ft)	Vertical Depth (ft)	Local Coordinates		Comment
		+N/-S (ft)	+E/-W (ft)	
120.00	120.00	0.09	0.29	First CoreTech Survey
720.00	719.98	2.22	4.02	Last CoreTech Survey
971.00	970.90	7.34	6.87	First SDI MWD Survey
5,887.00	5,749.04	808.60	-259.75	Curve KOP
5,909.00	5,771.01	809.09	-260.73	First SDI MWD Curve Survey
6,750.00	6,309.76	804.85	-795.22	Last SDI MWD Curve Survey
6,863.00	6,315.57	802.18	-907.95	First SDI MWD Lateral Survey
16,424.00	6,399.58	787.92	-10,464.16	Last SDI MWD Survey
16,480.00	6,399.12	789.10	-10,520.15	Projection to TD

Checked By: _____	Approved By: _____	Date: _____
-------------------	--------------------	-------------