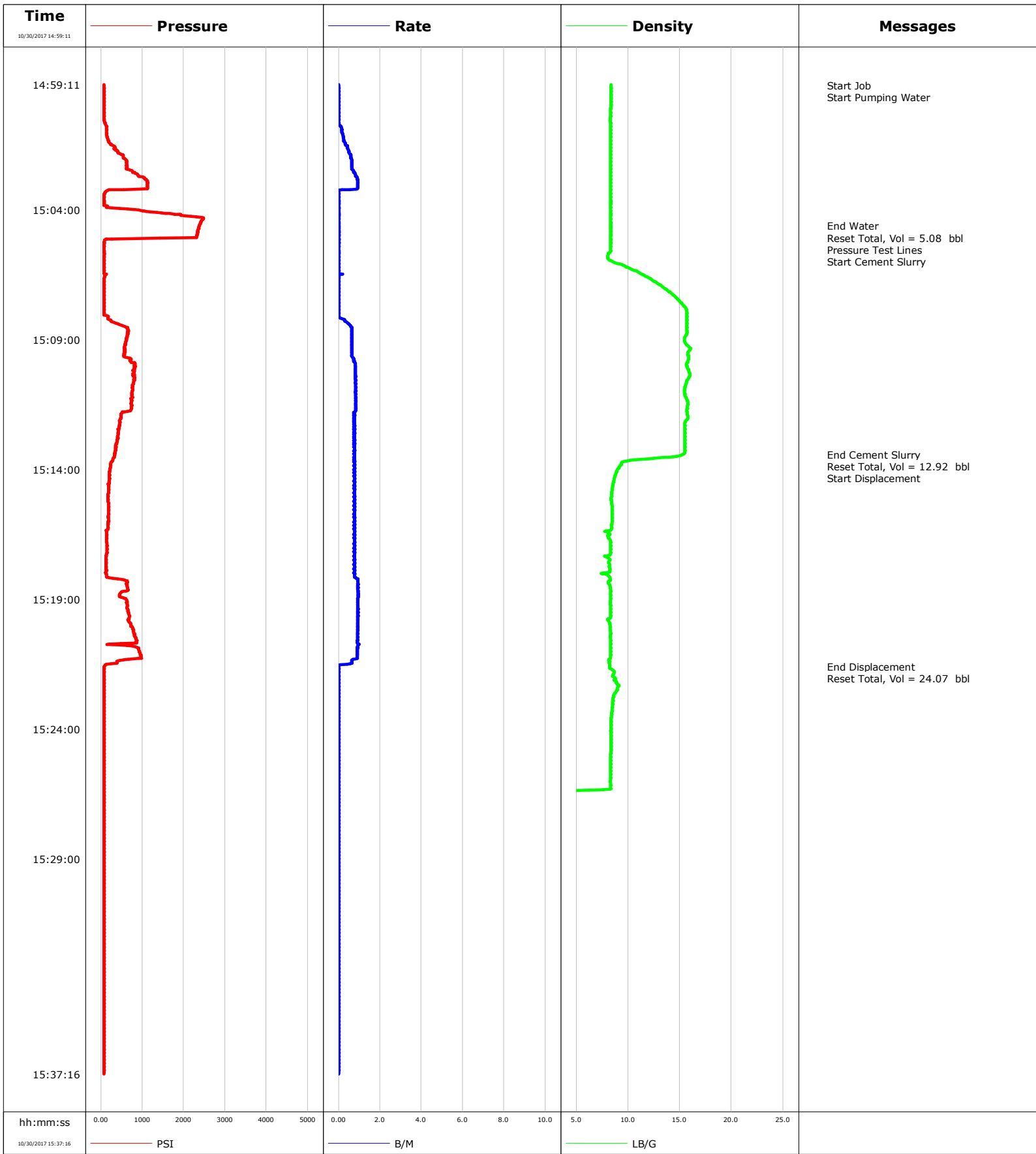


Well	HANKINS-USX-N-17-7	Client	ANADARKO ENERGY
Field	DJ	SIR No.	2599709
Engineer	LUIS JIMENEZ	Job Type	NIO PLUG
Country	United States	Job Date	10-30-2017



				Customer		Job Number	
				ANADARKO ENERGY		2599709	
Well		Location (legal)		Schlumberger Location		Job Start	
HANKINS-USX-N-17-7 0630870030		WELD		CHEYENNE		Oct/30/2017	
Field		Formation Name/Type		Deviation	Bit Size	Well MD	Well TVD
DJ				deg	in	7170.0 ft	7170.0 ft
County		State/Province		BHP	BHST	BHCT	Pore Press. Gradient
WELD		Colorado		psi	degF	degF	lb/gal
Well Master		API/UWI					
Rig Name	Drilled For	Service Via	Casing/Liner				
LEED# 724	Oil and Gas	Land	Depth, ft	Size, in	Weight, lb/ft	Grade	Thread
Offshore Zone	Well Class	Well Type	7170.0	4.5	11.6	N80	N/A
N/A	Old	Workover	0.0	0.0	0.0		
Drilling Fluid Type		Max. Density	Plastic Viscosity	Tubing/Drill Pipe			
		lb/gal	cP	T/D	Depth, ft	Size, in	Weight, lb/ft
Service Line		Job Type		T	7170.0	2.4	4.7
Cementing		NIO PLUG			0.0	0.0	0.0
Max. Allowed Tub. Press	Max. Allowed Ann. Press	WH Connection		Perforations/Open Hole			
psi	psi	2 3/8" 4.7# T/S		Top, ft	Bottom, ft	shot/ft	No. of Shots
Service Instructions 50 sks 1.53 ft3/sk 6.3 gps @ 15.8 ppg 5 bbls Water 13.6 bbls CMT 24 bbls of Disp. est. TOC= 6290 ft				ft	ft		Total Interval
				ft	ft		Diameter
				ft	ft		in
Treat Down		Displacement		Packer Type		Packer Depth	
Tubing		24.0 bbl				ft	
Tubing Vol.		Casing Vol.		Annular Vol.		Openhole Vol.	
13.6 bbl		bbl		bbl		bbl	
Casing/Tubing Secured <input checked="" type="checkbox"/>		1 Hole Vol. Circulated prior to Cement <input checked="" type="checkbox"/>		Casing Tools		Squeeze Job	
Lift Pressure		psi		Shoe Type		Squeeze Type	
Pipe Rotated <input type="checkbox"/>		Pipe Reciprocated <input type="checkbox"/>		Shoe Depth		ft	
No. Centralizers		Top Plugs	Bottom Plugs	Stage Tool Type		Tool Depth	
						ft	
Cement Head Type				Stage Tool Depth		ft	
Job Scheduled For		Arrived on Location	Leave Location	Collar Type		Tail Pipe Depth	
Oct/30/2017 13:30		Oct/30/2017 13:30	Oct/30/2017 15:30			ft	
				Collar Depth		ft	
						Sqz. Total Vol.	
						bbl	
Date	Time 24-hr clock	Treating Pressure PSI	Flow Rate B/M	Density LB/G	Volume BBL	Message	
10/30/2017	14:59:11	81	0.0	8.36	0.0	End Job	
10/30/2017	14:59:13	81	0.0	8.36	0.0	Start Job	
10/30/2017	14:59:14	81	0.0	8.36	0.0	Start Pumping Water	
10/30/2017	15:04:12	1931	0.0	8.31	5.1		
10/30/2017	15:04:38	2379	0.0	8.31	5.1	End Water	
10/30/2017	15:04:39	2375	0.0	8.31	5.1	Reset Total, Vol = 5.08 bbl	
10/30/2017	15:04:50	2343	0.0	8.31	5.1	Pressure Test Lines	
10/30/2017	15:05:17	77	0.0	8.31	5.1	Start Cement Slurry	
10/30/2017	15:09:13	585	0.7	15.71	7.0		
10/30/2017	15:13:26	342	0.8	15.30	18.0	End Cement Slurry	
10/30/2017	15:13:27	329	0.8	15.21	18.0	Reset Total, Vol = 12.92 bbl	
10/30/2017	15:13:28	338	0.8	15.10	18.0	Start Displacement	
10/30/2017	15:14:14	214	0.8	8.77	19.9		
10/30/2017	15:19:15	640	0.9	8.31	35.0		
10/30/2017	15:21:35	91	0.0	8.23	42.0	End Displacement	
10/30/2017	15:21:36	81	0.0	8.22	42.1	Reset Total, Vol = 24.07 bbl	
10/30/2017	15:24:16	77	0.0	8.39	42.1		
10/30/2017	15:29:17	77	0.0	-0.00	42.1		

Well HANKINS-USX-N-17-7 0630870030	Field DJ	Job Start Oct/30/2017	Customer ANADARKO ENERGY	Job Number 2599709
--	--------------------	---------------------------------	------------------------------------	------------------------------

Post Job Summary

Average Pump Rates, bbl/min					Volume of Fluid Injected, bbl			
Slurry 3.2	N2	Mud	Maximum Rate 8.7	Total Slurry 13.6	Mud 0.0	Spacer 5.0	N2	
Treating Pressure Summary, psi					Breakdown Fluid			
Maximum 2485	Final 81	Average 307	Bump Plug to	Breakdown	Type	Volume bbl	Density lb/gal	
Avg. N2 Percent %	Designed Slurry Volume 13.6 bbl	Displacement 24.0 bbl	Mix Water Temp 50 degF	Cement Circulated to Surface? <input type="checkbox"/>	Volume bbl	To ft		
				Washed Thru Perfs <input type="checkbox"/>				
Customer or Authorized Representative ALEX CARAVAGGIO			Schlumberger Supervisor LUIS JIMENEZ		Circulation Lost <input type="checkbox"/>	Job Completed <input checked="" type="checkbox"/>		
					-	-		

Well			Field		Job Start	Customer	Job Number
Hankins USX N 17-7			DJ		Oct/31/2017	Anadarko	DA6T-01761
Date	Time 24-hr clock	Treating Pressure PSI	Flow Rate B/M	Density LB/G	Volume BBL	Message	
10/31/2017	13:28:46	-106	0.0	15.58	4.3		
10/31/2017	13:28:47	-102	0.0	15.60	4.3	Start Cement Slurry	
10/31/2017	13:29:16	512	1.0	15.57	4.7		
10/31/2017	13:29:46	507	1.1	15.19	5.3		
10/31/2017	13:30:16	558	1.1	15.60	5.8		
10/31/2017	13:30:46	736	1.0	15.80	6.4		
10/31/2017	13:31:16	704	1.0	15.23	6.9		
10/31/2017	13:31:46	645	1.1	15.52	7.4		
10/31/2017	13:32:16	626	0.6	15.79	7.9		
10/31/2017	13:32:46	960	0.9	15.64	8.3		
10/31/2017	13:33:16	1102	0.8	15.55	8.7		
10/31/2017	13:33:46	1198	0.8	15.40	9.1		
10/31/2017	13:34:16	1153	1.0	15.65	9.6		
10/31/2017	13:34:46	1029	0.9	15.69	10.1		
10/31/2017	13:35:16	965	0.9	14.26	10.5		
10/31/2017	13:35:46	855	0.9	15.64	10.9		
10/31/2017	13:36:16	791	0.9	14.81	11.4		
10/31/2017	13:36:46	754	1.0	15.07	11.9		
10/31/2017	13:37:16	791	0.9	15.62	12.4		
10/31/2017	13:37:46	764	0.9	15.51	12.8		
10/31/2017	13:38:16	768	0.9	15.39	13.3		
10/31/2017	13:38:46	777	0.9	15.41	13.8		
10/31/2017	13:39:16	786	0.9	15.27	14.2		
10/31/2017	13:39:46	283	0.5	14.82	14.7		
10/31/2017	13:40:16	136	0.5	15.20	14.9		
10/31/2017	13:40:46	722	0.9	15.65	15.3		
10/31/2017	13:41:16	768	0.9	15.85	15.8		
10/31/2017	13:41:46	896	0.9	15.78	16.2		
10/31/2017	13:42:16	860	0.9	15.65	16.7		
10/31/2017	13:42:46	809	0.9	15.20	17.1		
10/31/2017	13:43:16	754	0.9	15.43	17.5		
10/31/2017	13:43:46	750	0.9	15.44	18.0		
10/31/2017	13:44:16	713	0.9	14.99	18.4		
10/31/2017	13:44:46	667	0.9	15.15	18.9		
10/31/2017	13:45:16	667	0.9	15.38	19.3		
10/31/2017	13:45:46	681	0.9	15.50	19.8		
10/31/2017	13:46:16	773	0.9	15.60	20.2		
10/31/2017	13:46:46	791	0.8	15.67	20.6		
10/31/2017	13:47:16	832	0.8	15.62	21.0		
10/31/2017	13:47:46	864	0.9	15.18	21.5		
10/31/2017	13:48:16	892	0.8	15.65	21.9		
10/31/2017	13:48:46	393	0.4	15.67	22.2		
10/31/2017	13:49:16	338	0.5	13.32	22.4		
10/31/2017	13:49:46	-125	0.0	12.39	22.5		
10/31/2017	13:50:16	-106	0.0	12.60	22.5		
10/31/2017	13:50:46	-24	0.0	12.63	22.5		
10/31/2017	13:51:16	622	0.8	14.62	22.7		
10/31/2017	13:51:46	576	0.7	9.65	23.1		
10/31/2017	13:51:48	576	0.8	9.20	23.1	End Cement Slurry	
10/31/2017	13:51:52	617	0.8	8.76	23.1	Start Displacement	
10/31/2017	13:52:16	132	0.0	8.35	23.4		
10/31/2017	13:52:17	118	0.0	8.37	23.4	End Displacement	
10/31/2017	13:52:46	-92	0.0	8.34	23.4		
10/31/2017	13:53:16	-115	0.0	8.31	23.4		

Well		Field		Job Start		Customer		Job Number	
Hankins USX N 17-7		DJ		Oct/31/2017		Anadarko		DA6T-01761	
Date	Time 24-hr clock	Treating Pressure PSI	Flow Rate B/M	Density LB/G	Volume BBL	Message			
10/31/2017	13:53:46	-111	0.0	8.29	23.4				
10/31/2017	13:54:16	-102	0.0	8.28	23.4				
10/31/2017	13:54:46	-97	0.0	8.25	23.4				
10/31/2017	13:55:16	-102	0.0	8.22	23.4				
10/31/2017	13:55:46	-97	0.0	8.18	23.4				
10/31/2017	13:56:16	-115	0.0	8.14	23.4				
10/31/2017	13:56:46	-102	0.0	8.12	23.4				
10/31/2017	13:57:16	-97	0.0	8.12	23.4				
10/31/2017	13:57:46	-97	0.0	9.50	23.4				
10/31/2017	13:58:16	-102	0.0	10.24	23.4				
10/31/2017	13:58:46	-97	0.0	9.14	23.4				
10/31/2017	13:59:16	-97	0.0	8.60	23.4				
10/31/2017	13:59:46	-102	0.0	8.41	23.4				
10/31/2017	14:00:16	-97	0.0	8.35	23.4				
10/31/2017	14:00:46	-97	0.0	8.28	23.4				
10/31/2017	14:01:16	-97	0.0	8.31	23.4				
10/31/2017	14:01:46	-97	0.0	8.22	23.4				
10/31/2017	14:02:16	-97	0.0	8.23	23.4				

Post Job Summary

Average Pump Rates, bbl/min				Volume of Fluid Injected, bbl			
Slurry	N2	Mud	Maximum Rate	Total Slurry	Mud	Spacer	N2
0.9			1.2	23.4	0.0	23.4	
Treating Pressure Summary, psi				Breakdown Fluid			
Maximum	Final	Average	Bump Plug to	Breakdown	Type	Volume	Density
2357	-97	720				bbl	lb/gal
Avg. N2 Percent	Designed Slurry Volume		Displacement	Mix Water Temp	Cement Circulated to Surface?	Volume	
%	62.8 bbl		0.0 bbl	55 degF	<input type="checkbox"/>	bbl	
Customer or Authorized Representative			Schlumberger Supervisor		Washed Thru Perfs	To	
Alex Caravaggio			Robert Pippin		<input type="checkbox"/>	ft	
					Circulation Lost	Job Completed	
					<input type="checkbox"/>	<input checked="" type="checkbox"/>	
					-	-	

Well	Hankins USX N 17-7	Client	Anadarko
Field	DJ	SIR No.	DA6T-01761
Engineer	Robert Pippin	Job Type	Stub Plug
Country	United States	Job Date	10-31-2017

