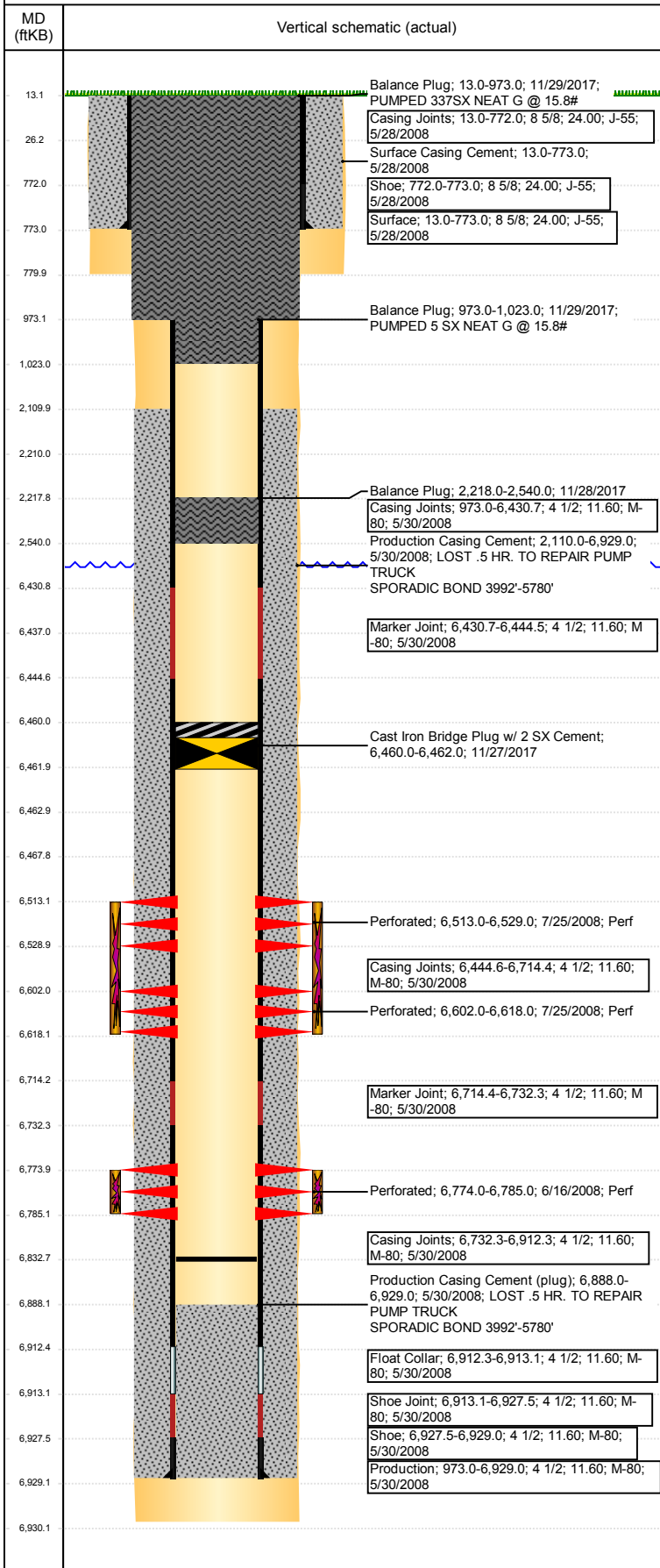


Well Name: WELLS RANCH USX AA35-02

VERTICAL - ORIGINAL HOLE, 12/14/2017 4:18:04 PM



Well Header

API 05-123-25882	Business Unit DJ BASIN	District 15	Well Config VERTICAL
Original KB Elevation (ft) 4,802	KB - GL / MSL (ftKB) 13.00	Spud Date 5/28/2008	P & A Date 11/29/2017

Comment

Directions To Well
From the intersection of WCR 68 and WCR 67, go East 2/10ths of a mile, then South 1.8 miles, then East 1.2 miles, then South 5/10ths of a mile, then Northwest 0.2 miles into location

Congressional Location

Quarter 3 NW	Quarter 4 NE	Section 35	Township 6	Twntshp N/S Dir N	Range 63	Range E/W Dir W
-----------------	-----------------	---------------	---------------	----------------------	-------------	--------------------

Bottom Hole Location

North-South Distance (ft)	From N or S Line	East-West Distance (ft)	From E or W Line
---------------------------	------------------	-------------------------	------------------

Plug Back Total Depths

Date	Depth (ftKB)	Method	Com
5/30/2008	6,912.1	CASING TALLY	TOP OF FLOAT COLLAR
6/13/2008	6,888.0	CASED HOLE LOG	DEPTH LOGGER ON CBL
7/31/2008	6,863.0	TUBING TALLY	DRILL CIFTF W/ SHOE AND CHASE DOWN TO 68...
4/25/2014	6,846.0	TBG TALLY	
6/26/2014	6,832.6	TBG TALLY	DRILL & CHASE CBP TO 6832.58

Wellbore Sections

Section Des	Size (in)	Act Top, MD (ftKB)	Act Btm, MD (ftKB)
SURFACE	12 1/4	13	780
PRODUCTION	7 7/8	780	6,930

Zone Statuses

Zone Name	Status Date	Status	Fluid Type	Job	Prod Method
NIOBRARA	8/8/2008	PR		DRILLING/CO...	
NIOBRARA	2/16/2010	PR	Water		Flowing
NIOBRARA	11/27/2017	P&A	Water	ABANDON WE...	
CODELL	8/8/2008	PR		DRILLING/CO...	
CODELL	2/16/2010	PR	Water		Flowing
CODELL	12/7/2015	PR			
CODELL	4/13/2016	PR			
CODELL	11/27/2017	P&A		ABANDON WE...	

Casing Strings

Surface, 773.0ftKB

Casing Description	Run Date	OD (in)	Wt/Len (L...)	Grade	Top, MD (ft...)	MD (ftKB)
Surface	5/28/2008	8 5/8	24.00	J-55	13.0	773.0

Production, 6,929.0ftKB

Casing Description	Run Date	OD (in)	Wt/Len (L...)	Grade	Top, MD (ft...)	MD (ftKB)
Production	5/30/2008	4 1/2	11.60	M-80	13.1	6,929.0

Cement

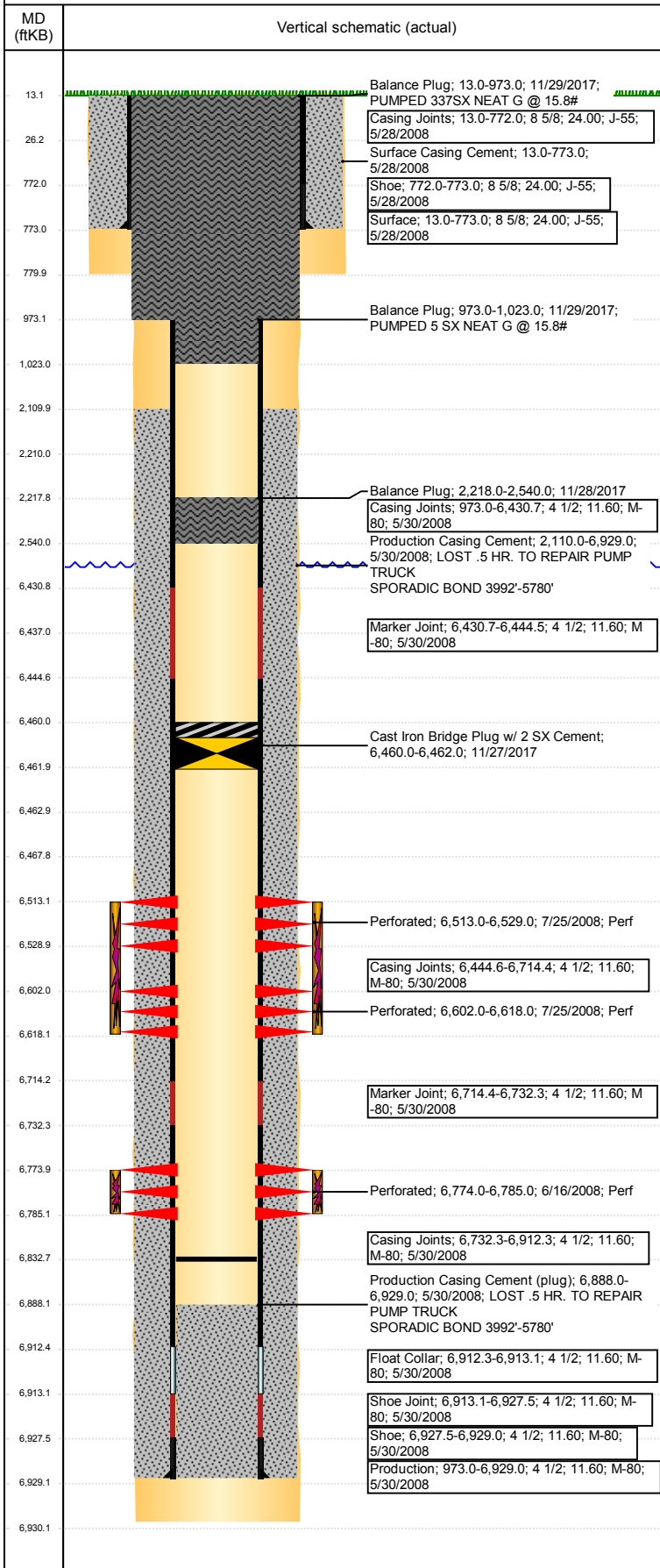
Description	Top Depth (ftKB)	Bottom Depth (ftKB)
Surface Casing Cement	13.0	773.0
Production Casing Cement	2,110.0	6,929.0
Balance Plug	973.0	1,023.0
Shoe Plug	13.0	973.0
Balance Plug	2,210.0	2,540.0
Dump Bail	6,437.0	6,463.0
Balance Plug	2,218.0	2,540.0
Balance Plug	973.0	1,023.0
Balance Plug	13.0	973.0

Tubing Strings

Tubing Description	Run Date	String...	ID (in)	Wt (lb/ft)	Grade	Len (ft)	Set De...
Tubing - Production	8/1/2008	2 3/8	2.00	4.70	J-55	6,753.20	

Well Name: WELLS RANCH USX AA35-02

VERTICAL - ORIGINAL HOLE, 12/14/2017 4:18:04 PM



Tubing Components							
Item Des	OD (in)	Wt (lb/ft)	Grade	Jts	Len (ft)	Btm (ftKB)	Btm (TVD) (ftKB)
Tubing Pup Joint	2 3/8	4.70	J-55	2	20.00	31.0	
Tubing	2 3/8	4.70	J-55	217	6,731.80	6,762.8	
SEATING NIPPLE	2 3/8			1	1.05	6,763.9	
Notched collar	2 3/8			1	0.35	6,764.2	
Tubing Description		Run Date	String...	ID (in)	Wt (lb/ft)	Grade	Len (ft)
Tubing - Production		4/25/2014	2 3/8	2.00	4.70	J-55	5,845.20

Tubing Components							
Item Des	OD (in)	Wt (lb/ft)	Grade	Jts	Len (ft)	Btm (ftKB)	Btm (TVD) (ftKB)
EUE 8rd Tubing	2 3/8	4.70	J-55	188	5,843.40	5,857.5	
Pump Seating Nipple	2 3/8	0.00	X	1	1.10	5,858.6	
Cone Bit DHT	2 3/8	0.00	X	1	0.70	5,859.3	
Tubing Description		Run Date	String...	ID (in)	Wt (lb/ft)	Grade	Len (ft)
Tubing - Production		6/26/2014	2 3/8	2.00	4.70	J-55	6,745.61

Tubing Components							
Item Des	OD (in)	Wt (lb/ft)	Grade	Jts	Len (ft)	Btm (ftKB)	Btm (TVD) (ftKB)
Pup Joint	2 3/8	4.70	J-55	1	10.00	23.0	
Pup Joint	2 3/8	4.70	J-55	1	10.00	33.0	
EUE 8rd Tubing	2 3/8	4.70	J-55	217	6,723.91	6,756.9	
Pump Seating Nipple	2 3/8	1.10	X	1	1.10	6,758.0	
Notched collar	2 3/8		X	1	0.60	6,758.6	

Other In Hole				
Run Date	Des	OD (in)	Top (ftKB)	Btm (ftKB)
8/15/2017	Cast Iron Bridge Plug	3.99	6,463.0	6,468.0
11/27/2017	Cast Iron Bridge Plug w/ 2 SX Cement	3.99	6,460.0	6,462.0

Logs			
Date	Type	Top, MD (ftKB)	Btm, MD (ftKB)
5/30/2008	Caliper/Comp. Density/Neutron/GR/SP/ML	2,700.0	6,910.0
5/30/2008	DIL/GR/SP/Caliper	780.0	6,930.0
6/13/2008	CBL/CCL/GR	1,910.0	6,886.0
7/26/2013	GYRO	13.0	6,700.0

Perforation Data					
Linked Zone	Bnch/St g	Sum of Entered Shot Total	Top (ftKB)	Btm (ftKB)	Date
NIOBRARA, ORIGINAL HOLE	A	64	6,513.00	6,529.00	7/25/2008
NIOBRARA, ORIGINAL HOLE	B	64	6,602.00	6,618.00	7/25/2008
CODELL, ORIGINAL HOLE		44	6,774.00	6,785.00	6/16/2008
Total (Sum)		172			

Stimulation Intervals		
Start Date	Primary Job Type	
7/25/2008	DRILLING/COMPLETION - ORIGINAL	
Technical Result	Tech Result Details	Tech Result Note
Success	According to Plan	
Comment		
FRAC THE CODELL - NO PROBLEMS TO REPORT		
Start Date	Primary Job Type	
7/25/2008	DRILLING/COMPLETION - ORIGINAL	
Technical Result	Tech Result Details	Tech Result Note
Success	According to Plan	
Comment		
FRAC THE CODEL - NO PROBLEMS TO REPORT		