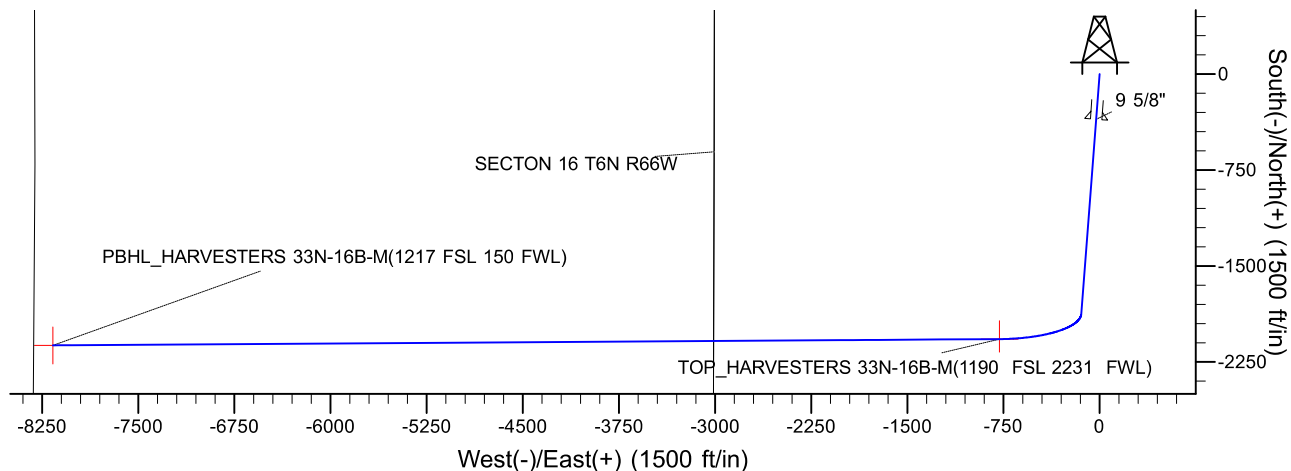
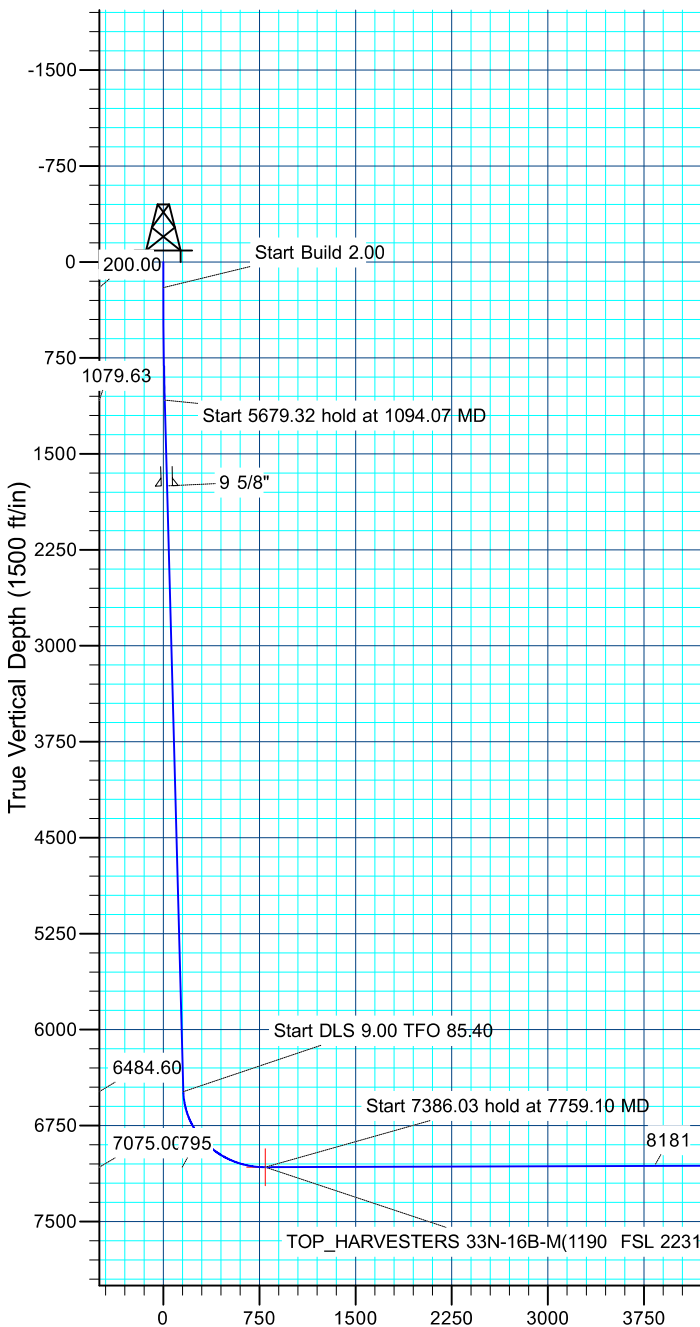
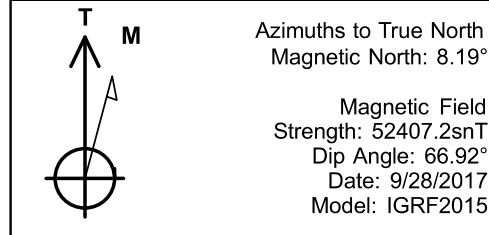




Project: SECTION 15, T6N, R66W
Site: HARVESTERS STATE 7-15 PAD
Well: HARVESTERS STATE 33N-16B-M
Wellbore: OH
Design: PLAN #1
Lat: 40.4900780
Long: -104.7625180



DESIGN TARGET DETAILS									
Name	TVD	+N/-S	+E/-W	Northing	Easting	Latitude	Longitude	Shape	
PBHL	7051.00	-2120.72	-8166.92	1420040.27	3196972.11	40.4842530	-104.7918780	Point	
TOP	- plan hits target center	7075.00	-2071.42	1420150.99	3204357.26	40.4843920	-104.7653260	Point	
	- plan hits target center								
SECTION DETAILS									
MD	Inc	Azi	TVD	+N/-S	+E/-W	Dleg	TFace	VSect	Target
0.00	0.00	0.00	0.00	0.00	0.00	0.00	0.00	0.00	
200.00	0.00	0.00	200.00	0.00	0.00	0.00	0.00	0.00	
1094.07	17.88	184.39	1079.63	-137.98	-10.59	2.00	184.39	11.51	
6773.39	17.88	184.39	6484.60	-1876.69	-144.00	0.00	0.00	156.52	
7759.10	90.19	269.62	7075.00	-2071.42	-781.09	9.00	85.40	794.90	
15145.13	90.19	269.62	7051.00	-2120.72	-8166.92	0.00	0.00	8180.89	PBHL
CASING DETAILS						PROJECT DETAILS: SECTION 15, T6N, R66W			
TVD	MD	Name	Size	Geodetic System: US State Plane 1983 Datum: North American Datum 1983 Ellipsoid: GRS 1980 Zone: Colorado Northern Zone Colorado Northern Zone System Datum: Mean Sea Level					
1750.00	1798.47	9 5/8"	9.625						
HARVESTERS 33N-16B-M(1217 FSL 150 FWL)									

Vertical Section at 269.62° (1500 ft/in)



SRC ENERGY

**SECTION 15, T6N, R66W
HARVESTERS STATE 7-15 PAD
HARVESTERS STATE 33N-16B-M**

OH

Plan: PLAN #1

Standard Planning Report

02 October, 2017





Database:	EDM 5000.14 Single User Db	Local Co-ordinate Reference:	Well HARVESTERS STATE 33N-16B-M
Company:	SRC ENERGY	TVD Reference:	KB @ 4820.00ft
Project:	SECTION 15, T6N, R66W	MD Reference:	KB @ 4820.00ft
Site:	HARVESTERS STATE 7-15 PAD	North Reference:	True
Well:	HARVESTERS STATE 33N-16B-M	Survey Calculation Method:	Minimum Curvature
Wellbore:	OH		
Design:	PLAN #1		

Project	SECTION 15, T6N, R66W		
Map System:	US State Plane 1983	System Datum:	Mean Sea Level
Geo Datum:	North American Datum 1983		
Map Zone:	Colorado Northern Zone		

Site	HARVESTERS STATE 7-15 PAD			
Site Position:		Northing:	1,422,648.53 usft	Latitude: 40.4912300
From:	Lat/Long	Easting:	3,205,120.94 usft	Longitude: -104.7625060
Position Uncertainty:	3.28 ft	Slot Radius:	13.200 in	Grid Convergence: 0.48 °

Well	HARVESTERS STATE 33N-16B-M, 2013' FNL & 2336' FEL			
Well Position	+N/-S	-419.68 ft	Northing:	1,422,228.83 usft
	+E/-W	-3.34 ft	Easting:	3,205,121.10 usft
Position Uncertainty		3.28 ft	Wellhead Elevation:	Latitude: 40.4900780
				Longitude: -104.7625180
				Ground Level: 4,800.00 ft

Wellbore	OH				
Magnetics	Model Name	Sample Date	Declination (°)	Dip Angle (°)	Field Strength (nT)
	IGRF2015	9/28/2017	8.19	66.92	52,407

Design	PLAN #1			
Audit Notes:				
Version:	Phase:	PLAN	Tie On Depth:	0.00
Vertical Section:	Depth From (TVD) (ft)	+N/-S (ft)	+E/-W (ft)	Direction (°)
	0.00	0.00	0.00	269.62

Plan Survey Tool Program	Date	10/2/2017		
Depth From (ft)	Depth To (ft)	Survey (Wellbore)	Tool Name	Remarks
1	0.00	15,145.11	PLAN #1 (OH)	MWD+IFR1
				OWSG MWD + IFR1

Plan Sections										
Measured Depth (ft)	Inclination (°)	Azimuth (°)	Vertical Depth (ft)	+N/-S (ft)	+E/-W (ft)	Dogleg Rate (°/100ft)	Build Rate (°/100ft)	Turn Rate (°/100ft)	TFO (°)	Target
0.00	0.00	0.00	0.00	0.00	0.00	0.00	0.00	0.00	0.00	
200.00	0.00	0.00	200.00	0.00	0.00	0.00	0.00	0.00	0.00	
1,094.07	17.88	184.39	1,079.63	-137.98	-10.59	2.00	2.00	0.00	184.39	
6,773.39	17.88	184.39	6,484.60	-1,876.69	-144.00	0.00	0.00	0.00	0.00	
7,759.10	90.19	269.62	7,075.00	-2,071.42	-781.09	9.00	7.34	8.65	85.40	
15,145.13	90.19	269.62	7,051.00	-2,120.72	-8,166.92	0.00	0.00	0.00	0.00	PBHL_HARVESTERS

Database:	EDM 5000.14 Single User Db	Local Co-ordinate Reference:	Well HARVESTERS STATE 33N-16B-M
Company:	SRC ENERGY	TVD Reference:	KB @ 4820.00ft
Project:	SECTION 15, T6N, R66W	MD Reference:	KB @ 4820.00ft
Site:	HARVESTERS STATE 7-15 PAD	North Reference:	True
Well:	HARVESTERS STATE 33N-16B-M	Survey Calculation Method:	Minimum Curvature
Wellbore:	OH		
Design:	PLAN #1		

Planned Survey									
Measured Depth (ft)	Inclination (°)	Azimuth (°)	Vertical Depth (ft)	+N/-S (ft)	+E/-W (ft)	Vertical Section (ft)	Dogleg Rate (°/100ft)	Build Rate (°/100ft)	Turn Rate (°/100ft)
0.00	0.00	0.00	0.00	0.00	0.00	0.00	0.00	0.00	0.00
100.00	0.00	0.00	100.00	0.00	0.00	0.00	0.00	0.00	0.00
200.00	0.00	0.00	200.00	0.00	0.00	0.00	0.00	0.00	0.00
Start Build 2.00									
300.00	2.00	184.39	299.98	-1.74	-0.13	0.15	2.00	2.00	0.00
400.00	4.00	184.39	399.84	-6.96	-0.53	0.58	2.00	2.00	0.00
500.00	6.00	184.39	499.45	-15.65	-1.20	1.31	2.00	2.00	0.00
600.00	8.00	184.39	598.70	-27.80	-2.13	2.32	2.00	2.00	0.00
700.00	10.00	184.39	697.47	-43.40	-3.33	3.62	2.00	2.00	0.00
800.00	12.00	184.39	795.62	-62.42	-4.79	5.21	2.00	2.00	0.00
900.00	14.00	184.39	893.06	-84.85	-6.51	7.08	2.00	2.00	0.00
1,000.00	16.00	184.39	989.64	-110.65	-8.49	9.23	2.00	2.00	0.00
1,094.07	17.88	184.39	1,079.63	-137.98	-10.59	11.51	2.00	2.00	0.00
Start 5679.32 hold at 1094.07 MD									
1,100.00	17.88	184.39	1,085.27	-139.80	-10.73	11.66	0.00	0.00	0.00
1,200.00	17.88	184.39	1,180.44	-170.41	-13.08	14.21	0.00	0.00	0.00
1,300.00	17.88	184.39	1,275.61	-201.03	-15.42	16.77	0.00	0.00	0.00
1,400.00	17.88	184.39	1,370.78	-231.64	-17.77	19.32	0.00	0.00	0.00
1,500.00	17.88	184.39	1,465.95	-262.26	-20.12	21.87	0.00	0.00	0.00
1,600.00	17.88	184.39	1,561.12	-292.87	-22.47	24.43	0.00	0.00	0.00
1,700.00	17.88	184.39	1,656.29	-323.48	-24.82	26.98	0.00	0.00	0.00
1,798.47	17.88	184.39	1,750.00	-353.63	-27.13	29.49	0.00	0.00	0.00
9 5/8"									
1,800.00	17.88	184.39	1,751.46	-354.10	-27.17	29.53	0.00	0.00	0.00
1,900.00	17.88	184.39	1,846.63	-384.71	-29.52	32.09	0.00	0.00	0.00
2,000.00	17.88	184.39	1,941.80	-415.33	-31.87	34.64	0.00	0.00	0.00
2,100.00	17.88	184.39	2,036.96	-445.94	-34.22	37.19	0.00	0.00	0.00
2,200.00	17.88	184.39	2,132.13	-476.56	-36.57	39.75	0.00	0.00	0.00
2,300.00	17.88	184.39	2,227.30	-507.17	-38.92	42.30	0.00	0.00	0.00
2,400.00	17.88	184.39	2,322.47	-537.79	-41.26	44.85	0.00	0.00	0.00
2,500.00	17.88	184.39	2,417.64	-568.40	-43.61	47.41	0.00	0.00	0.00
2,600.00	17.88	184.39	2,512.81	-599.02	-45.96	49.96	0.00	0.00	0.00
2,700.00	17.88	184.39	2,607.98	-629.63	-48.31	52.51	0.00	0.00	0.00
2,800.00	17.88	184.39	2,703.15	-660.25	-50.66	55.07	0.00	0.00	0.00
2,900.00	17.88	184.39	2,798.32	-690.86	-53.01	57.62	0.00	0.00	0.00
3,000.00	17.88	184.39	2,893.49	-721.48	-55.36	60.17	0.00	0.00	0.00
3,100.00	17.88	184.39	2,988.66	-752.09	-57.71	62.73	0.00	0.00	0.00
3,200.00	17.88	184.39	3,083.83	-782.71	-60.06	65.28	0.00	0.00	0.00
3,300.00	17.88	184.39	3,179.00	-813.32	-62.41	67.83	0.00	0.00	0.00
3,400.00	17.88	184.39	3,274.17	-843.94	-64.76	70.39	0.00	0.00	0.00
3,500.00	17.88	184.39	3,369.34	-874.55	-67.10	72.94	0.00	0.00	0.00
3,600.00	17.88	184.39	3,464.51	-905.17	-69.45	75.49	0.00	0.00	0.00
3,700.00	17.88	184.39	3,559.68	-935.78	-71.80	78.05	0.00	0.00	0.00
3,800.00	17.88	184.39	3,654.84	-966.40	-74.15	80.60	0.00	0.00	0.00
3,900.00	17.88	184.39	3,750.01	-997.01	-76.50	83.15	0.00	0.00	0.00
4,000.00	17.88	184.39	3,845.18	-1,027.62	-78.85	85.71	0.00	0.00	0.00
4,100.00	17.88	184.39	3,940.35	-1,058.24	-81.20	88.26	0.00	0.00	0.00
4,200.00	17.88	184.39	4,035.52	-1,088.85	-83.55	90.81	0.00	0.00	0.00
4,300.00	17.88	184.39	4,130.69	-1,119.47	-85.90	93.37	0.00	0.00	0.00
4,400.00	17.88	184.39	4,225.86	-1,150.08	-88.25	95.92	0.00	0.00	0.00
4,500.00	17.88	184.39	4,321.03	-1,180.70	-90.59	98.47	0.00	0.00	0.00
4,600.00	17.88	184.39	4,416.20	-1,211.31	-92.94	101.03	0.00	0.00	0.00
4,700.00	17.88	184.39	4,511.37	-1,241.93	-95.29	103.58	0.00	0.00	0.00

Database:	EDM 5000.14 Single User Db	Local Co-ordinate Reference:	Well HARVESTERS STATE 33N-16B-M
Company:	SRC ENERGY	TVD Reference:	KB @ 4820.00ft
Project:	SECTION 15, T6N, R66W	MD Reference:	KB @ 4820.00ft
Site:	HARVESTERS STATE 7-15 PAD	North Reference:	True
Well:	HARVESTERS STATE 33N-16B-M	Survey Calculation Method:	Minimum Curvature
Wellbore:	OH		
Design:	PLAN #1		

Planned Survey									
Measured Depth (ft)	Inclination (°)	Azimuth (°)	Vertical Depth (ft)	+N/-S (ft)	+E/-W (ft)	Vertical Section (ft)	Dogleg Rate (°/100ft)	Build Rate (°/100ft)	Turn Rate (°/100ft)
4,800.00	17.88	184.39	4,606.54	-1,272.54	-97.64	106.13	0.00	0.00	0.00
4,900.00	17.88	184.39	4,701.71	-1,303.16	-99.99	108.69	0.00	0.00	0.00
5,000.00	17.88	184.39	4,796.88	-1,333.77	-102.34	111.24	0.00	0.00	0.00
5,100.00	17.88	184.39	4,892.05	-1,364.39	-104.69	113.79	0.00	0.00	0.00
5,200.00	17.88	184.39	4,987.22	-1,395.00	-107.04	116.35	0.00	0.00	0.00
5,300.00	17.88	184.39	5,082.39	-1,425.62	-109.39	118.90	0.00	0.00	0.00
5,400.00	17.88	184.39	5,177.56	-1,456.23	-111.74	121.45	0.00	0.00	0.00
5,500.00	17.88	184.39	5,272.72	-1,486.85	-114.09	124.01	0.00	0.00	0.00
5,600.00	17.88	184.39	5,367.89	-1,517.46	-116.43	126.56	0.00	0.00	0.00
5,700.00	17.88	184.39	5,463.06	-1,548.08	-118.78	129.11	0.00	0.00	0.00
5,800.00	17.88	184.39	5,558.23	-1,578.69	-121.13	131.67	0.00	0.00	0.00
5,900.00	17.88	184.39	5,653.40	-1,609.31	-123.48	134.22	0.00	0.00	0.00
6,000.00	17.88	184.39	5,748.57	-1,639.92	-125.83	136.77	0.00	0.00	0.00
6,100.00	17.88	184.39	5,843.74	-1,670.53	-128.18	139.33	0.00	0.00	0.00
6,200.00	17.88	184.39	5,938.91	-1,701.15	-130.53	141.88	0.00	0.00	0.00
6,300.00	17.88	184.39	6,034.08	-1,731.76	-132.88	144.43	0.00	0.00	0.00
6,400.00	17.88	184.39	6,129.25	-1,762.38	-135.23	146.99	0.00	0.00	0.00
6,500.00	17.88	184.39	6,224.42	-1,792.99	-137.58	149.54	0.00	0.00	0.00
6,600.00	17.88	184.39	6,319.59	-1,823.61	-139.93	152.09	0.00	0.00	0.00
6,700.00	17.88	184.39	6,414.76	-1,854.22	-142.27	154.65	0.00	0.00	0.00
6,773.39	17.88	184.39	6,484.60	-1,876.69	-144.00	156.52	0.00	0.00	0.00
Start DLS 9.00 TFO 85.40									
6,800.00	18.23	192.04	6,509.91	-1,884.84	-145.18	157.76	9.00	1.29	28.76
6,900.00	21.86	216.31	6,603.99	-1,915.20	-159.50	172.28	9.00	3.64	24.27
7,000.00	27.94	232.24	6,694.76	-1,944.60	-189.11	202.08	9.00	6.07	15.93
7,100.00	35.21	242.45	6,779.96	-1,972.34	-233.27	246.43	9.00	7.27	10.21
7,200.00	43.06	249.44	6,857.50	-1,997.71	-290.92	304.24	9.00	7.86	6.99
7,300.00	51.24	254.60	6,925.48	-2,020.10	-360.61	374.08	9.00	8.17	5.16
7,400.00	59.59	258.68	6,982.21	-2,038.96	-440.64	454.24	9.00	8.35	4.08
7,500.00	68.05	262.11	7,026.31	-2,053.82	-529.04	542.74	9.00	8.46	3.43
7,600.00	76.57	265.15	7,056.68	-2,064.32	-623.63	637.39	9.00	8.52	3.04
7,700.00	85.12	267.99	7,072.58	-2,070.19	-722.08	735.88	9.00	8.56	2.83
7,759.09	90.19	269.62	7,075.00	-2,071.42	-781.09	794.89	9.00	8.57	2.76
TOP_HARVESTERS 33N-16B-M(1190 FSL 2231 FWL)									
7,759.10	90.19	269.62	7,075.00	-2,071.42	-781.09	794.90	9.00	8.57	2.75
Start 7386.03 hold at 7759.10 MD									
7,800.00	90.19	269.62	7,074.86	-2,071.69	-821.99	835.80	0.00	0.00	0.00
7,900.00	90.19	269.62	7,074.54	-2,072.36	-921.99	935.80	0.00	0.00	0.00
8,000.00	90.19	269.62	7,074.21	-2,073.03	-1,021.99	1,035.80	0.00	0.00	0.00
8,100.00	90.19	269.62	7,073.89	-2,073.70	-1,121.98	1,135.80	0.00	0.00	0.00
8,200.00	90.19	269.62	7,073.57	-2,074.36	-1,221.98	1,235.80	0.00	0.00	0.00
8,300.00	90.19	269.62	7,073.24	-2,075.03	-1,321.98	1,335.80	0.00	0.00	0.00
8,400.00	90.19	269.62	7,072.92	-2,075.70	-1,421.98	1,435.80	0.00	0.00	0.00
8,500.00	90.19	269.62	7,072.59	-2,076.37	-1,521.97	1,535.80	0.00	0.00	0.00
8,600.00	90.19	269.62	7,072.27	-2,077.03	-1,621.97	1,635.80	0.00	0.00	0.00
8,700.00	90.19	269.62	7,071.94	-2,077.70	-1,721.97	1,735.80	0.00	0.00	0.00
8,800.00	90.19	269.62	7,071.62	-2,078.37	-1,821.97	1,835.80	0.00	0.00	0.00
8,900.00	90.19	269.62	7,071.29	-2,079.04	-1,921.96	1,935.80	0.00	0.00	0.00
9,000.00	90.19	269.62	7,070.97	-2,079.70	-2,021.96	2,035.79	0.00	0.00	0.00
9,100.00	90.19	269.62	7,070.64	-2,080.37	-2,121.96	2,135.79	0.00	0.00	0.00
9,200.00	90.19	269.62	7,070.32	-2,081.04	-2,221.95	2,235.79	0.00	0.00	0.00
9,300.00	90.19	269.62	7,069.99	-2,081.71	-2,321.95	2,335.79	0.00	0.00	0.00
9,400.00	90.19	269.62	7,069.67	-2,082.37	-2,421.95	2,435.79	0.00	0.00	0.00

Database:	EDM 5000.14 Single User Db	Local Co-ordinate Reference:	Well HARVESTERS STATE 33N-16B-M
Company:	SRC ENERGY	TVD Reference:	KB @ 4820.00ft
Project:	SECTION 15, T6N, R66W	MD Reference:	KB @ 4820.00ft
Site:	HARVESTERS STATE 7-15 PAD	North Reference:	True
Well:	HARVESTERS STATE 33N-16B-M	Survey Calculation Method:	Minimum Curvature
Wellbore:	OH		
Design:	PLAN #1		

Planned Survey									
Measured Depth (ft)	Inclination (°)	Azimuth (°)	Vertical Depth (ft)	+N/-S (ft)	+E/-W (ft)	Vertical Section (ft)	Dogleg Rate (°/100ft)	Build Rate (°/100ft)	Turn Rate (°/100ft)
9,500.00	90.19	269.62	7,069.34	-2,083.04	-2,521.95	2,535.79	0.00	0.00	0.00
9,600.00	90.19	269.62	7,069.02	-2,083.71	-2,621.94	2,635.79	0.00	0.00	0.00
9,700.00	90.19	269.62	7,068.69	-2,084.38	-2,721.94	2,735.79	0.00	0.00	0.00
9,800.00	90.19	269.62	7,068.37	-2,085.04	-2,821.94	2,835.79	0.00	0.00	0.00
9,900.00	90.19	269.62	7,068.04	-2,085.71	-2,921.94	2,935.79	0.00	0.00	0.00
10,000.00	90.19	269.62	7,067.72	-2,086.38	-3,021.93	3,035.79	0.00	0.00	0.00
10,100.00	90.19	269.62	7,067.39	-2,087.05	-3,121.93	3,135.79	0.00	0.00	0.00
10,200.00	90.19	269.62	7,067.07	-2,087.71	-3,221.93	3,235.79	0.00	0.00	0.00
10,300.00	90.19	269.62	7,066.74	-2,088.38	-3,321.92	3,335.79	0.00	0.00	0.00
10,400.00	90.19	269.62	7,066.42	-2,089.05	-3,421.92	3,435.79	0.00	0.00	0.00
10,500.00	90.19	269.62	7,066.09	-2,089.72	-3,521.92	3,535.79	0.00	0.00	0.00
10,600.00	90.19	269.62	7,065.77	-2,090.38	-3,621.92	3,635.79	0.00	0.00	0.00
10,700.00	90.19	269.62	7,065.44	-2,091.05	-3,721.91	3,735.79	0.00	0.00	0.00
10,800.00	90.19	269.62	7,065.12	-2,091.72	-3,821.91	3,835.79	0.00	0.00	0.00
10,900.00	90.19	269.62	7,064.79	-2,092.38	-3,921.91	3,935.78	0.00	0.00	0.00
11,000.00	90.19	269.62	7,064.47	-2,093.05	-4,021.90	4,035.78	0.00	0.00	0.00
11,100.00	90.19	269.62	7,064.14	-2,093.72	-4,121.90	4,135.78	0.00	0.00	0.00
11,200.00	90.19	269.62	7,063.82	-2,094.39	-4,221.90	4,235.78	0.00	0.00	0.00
11,300.00	90.19	269.62	7,063.49	-2,095.05	-4,321.90	4,335.78	0.00	0.00	0.00
11,400.00	90.19	269.62	7,063.17	-2,095.72	-4,421.89	4,435.78	0.00	0.00	0.00
11,500.00	90.19	269.62	7,062.84	-2,096.39	-4,521.89	4,535.78	0.00	0.00	0.00
11,600.00	90.19	269.62	7,062.52	-2,097.06	-4,621.89	4,635.78	0.00	0.00	0.00
11,700.00	90.19	269.62	7,062.19	-2,097.72	-4,721.89	4,735.78	0.00	0.00	0.00
11,800.00	90.19	269.62	7,061.87	-2,098.39	-4,821.88	4,835.78	0.00	0.00	0.00
11,900.00	90.19	269.62	7,061.54	-2,099.06	-4,921.88	4,935.78	0.00	0.00	0.00
12,000.00	90.19	269.62	7,061.22	-2,099.73	-5,021.88	5,035.78	0.00	0.00	0.00
12,100.00	90.19	269.62	7,060.89	-2,100.39	-5,121.87	5,135.78	0.00	0.00	0.00
12,200.00	90.19	269.62	7,060.57	-2,101.06	-5,221.87	5,235.78	0.00	0.00	0.00
12,300.00	90.19	269.62	7,060.24	-2,101.73	-5,321.87	5,335.78	0.00	0.00	0.00
12,400.00	90.19	269.62	7,059.92	-2,102.40	-5,421.87	5,435.78	0.00	0.00	0.00
12,500.00	90.19	269.62	7,059.59	-2,103.06	-5,521.86	5,535.78	0.00	0.00	0.00
12,600.00	90.19	269.62	7,059.27	-2,103.73	-5,621.86	5,635.78	0.00	0.00	0.00
12,700.00	90.19	269.62	7,058.94	-2,104.40	-5,721.86	5,735.78	0.00	0.00	0.00
12,800.00	90.19	269.62	7,058.62	-2,105.07	-5,821.86	5,835.77	0.00	0.00	0.00
12,900.00	90.19	269.62	7,058.29	-2,105.73	-5,921.85	5,935.77	0.00	0.00	0.00
13,000.00	90.19	269.62	7,057.97	-2,106.40	-6,021.85	6,035.77	0.00	0.00	0.00
13,100.00	90.19	269.62	7,057.64	-2,107.07	-6,121.85	6,135.77	0.00	0.00	0.00
13,200.00	90.19	269.62	7,057.32	-2,107.74	-6,221.84	6,235.77	0.00	0.00	0.00
13,300.00	90.19	269.62	7,057.00	-2,108.40	-6,321.84	6,335.77	0.00	0.00	0.00
13,400.00	90.19	269.62	7,056.67	-2,109.07	-6,421.84	6,435.77	0.00	0.00	0.00
13,500.00	90.19	269.62	7,056.35	-2,109.74	-6,521.84	6,535.77	0.00	0.00	0.00
13,600.00	90.19	269.62	7,056.02	-2,110.41	-6,621.83	6,635.77	0.00	0.00	0.00
13,700.00	90.19	269.62	7,055.70	-2,111.07	-6,721.83	6,735.77	0.00	0.00	0.00
13,800.00	90.19	269.62	7,055.37	-2,111.74	-6,821.83	6,835.77	0.00	0.00	0.00
13,900.00	90.19	269.62	7,055.05	-2,112.41	-6,921.82	6,935.77	0.00	0.00	0.00
14,000.00	90.19	269.62	7,054.72	-2,113.08	-7,021.82	7,035.77	0.00	0.00	0.00
14,100.00	90.19	269.62	7,054.40	-2,113.74	-7,121.82	7,135.77	0.00	0.00	0.00
14,200.00	90.19	269.62	7,054.07	-2,114.41	-7,221.82	7,235.77	0.00	0.00	0.00
14,300.00	90.19	269.62	7,053.75	-2,115.08	-7,321.81	7,335.77	0.00	0.00	0.00
14,400.00	90.19	269.62	7,053.42	-2,115.75	-7,421.81	7,435.77	0.00	0.00	0.00
14,500.00	90.19	269.62	7,053.10	-2,116.41	-7,521.81	7,535.77	0.00	0.00	0.00
14,600.00	90.19	269.62	7,052.77	-2,117.08	-7,621.81	7,635.77	0.00	0.00	0.00
14,700.00	90.19	269.62	7,052.45	-2,117.75	-7,721.80	7,735.76	0.00	0.00	0.00
14,800.00	90.19	269.62	7,052.12	-2,118.42	-7,821.80	7,835.76	0.00	0.00	0.00

Database:	EDM 5000.14 Single User Db	Local Co-ordinate Reference:	Well HARVESTERS STATE 33N-16B-M
Company:	SRC ENERGY	TVD Reference:	KB @ 4820.00ft
Project:	SECTION 15, T6N, R66W	MD Reference:	KB @ 4820.00ft
Site:	HARVESTERS STATE 7-15 PAD	North Reference:	True
Well:	HARVESTERS STATE 33N-16B-M	Survey Calculation Method:	Minimum Curvature
Wellbore:	OH		
Design:	PLAN #1		

Planned Survey									
Measured Depth (ft)	Inclination (°)	Azimuth (°)	Vertical Depth (ft)	+N/-S (ft)	+E/-W (ft)	Vertical Section (ft)	Dogleg Rate (°/100ft)	Build Rate (°/100ft)	Turn Rate (°/100ft)
14,900.00	90.19	269.62	7,051.80	-2,119.08	-7,921.80	7,935.76	0.00	0.00	0.00
15,000.00	90.19	269.62	7,051.47	-2,119.75	-8,021.79	8,035.76	0.00	0.00	0.00
15,100.00	90.19	269.62	7,051.15	-2,120.42	-8,121.79	8,135.76	0.00	0.00	0.00
15,145.13	90.19	269.62	7,051.00	-2,120.72	-8,166.92	8,180.89	0.00	0.00	0.00
TD at 15145.13 - PBHL_HARVESTERS 33N-16B-M(1217 FSL 150 FWL)									

Design Targets									
Target Name	Dip Angle (°)	Dip Dir. (°)	TVD (ft)	+N/-S (ft)	+E/-W (ft)	Northing (usft)	Easting (usft)	Latitude	Longitude
- hit/miss target									
- Shape									
PBHL_HARVESTERS 3	0.00	0.00	7,051.00	-2,120.72	-8,166.92	1,420,040.27	3,196,972.11	40.4842530	-104.7918780
- plan hits target center									
- Point									
TOP_HARVESTERS 33	0.00	0.00	7,075.00	-2,071.42	-781.09	1,420,150.99	3,204,357.27	40.4843920	-104.7653260
- plan hits target center									
- Point									

Casing Points					
Measured Depth (ft)	Vertical Depth (ft)	Name		Casing Diameter (in)	Hole Diameter (in)
1,798.47	1,750.00	9 5/8"		9.625	13.500

Plan Annotations				
Measured Depth (ft)	Vertical Depth (ft)	Local Coordinates		Comment
		+N/-S (ft)	+E/-W (ft)	
200.00	200.00	0.00	0.00	Start Build 2.00
1,094.07	1,079.63	-137.98	-10.59	Start 5679.32 hold at 1094.07 MD
6,773.39	6,484.60	-1,876.69	-144.00	Start DLS 9.00 TFO 85.40
7,759.10	7,075.00	-2,071.42	-781.09	Start 7386.03 hold at 7759.10 MD
15,145.13	7,051.00	-2,120.72	-8,166.92	TD at 15145.13