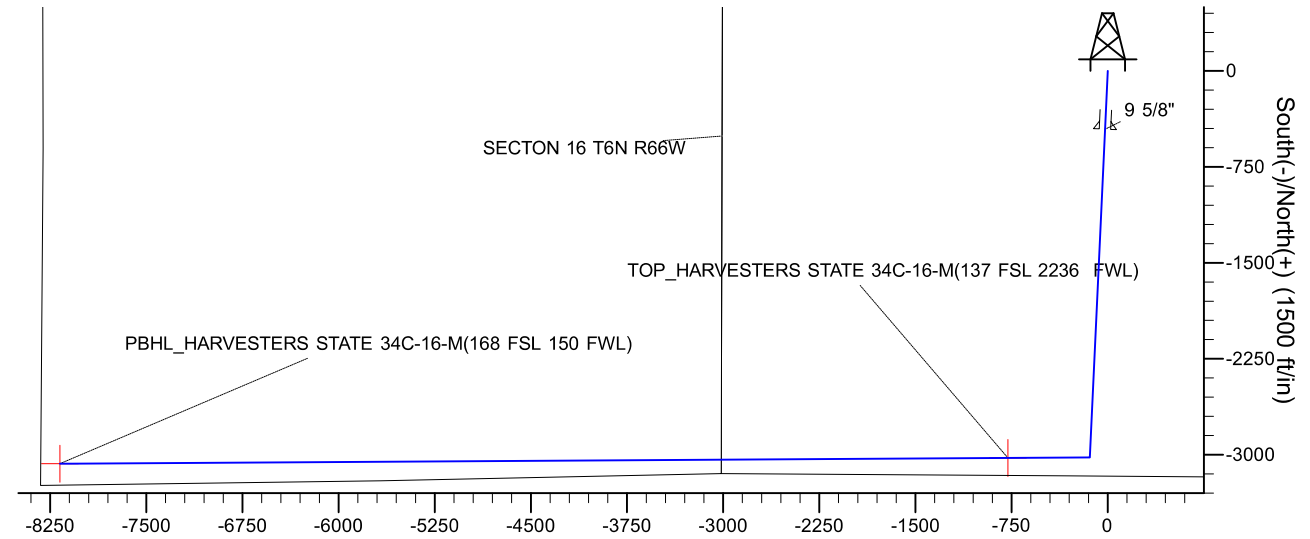
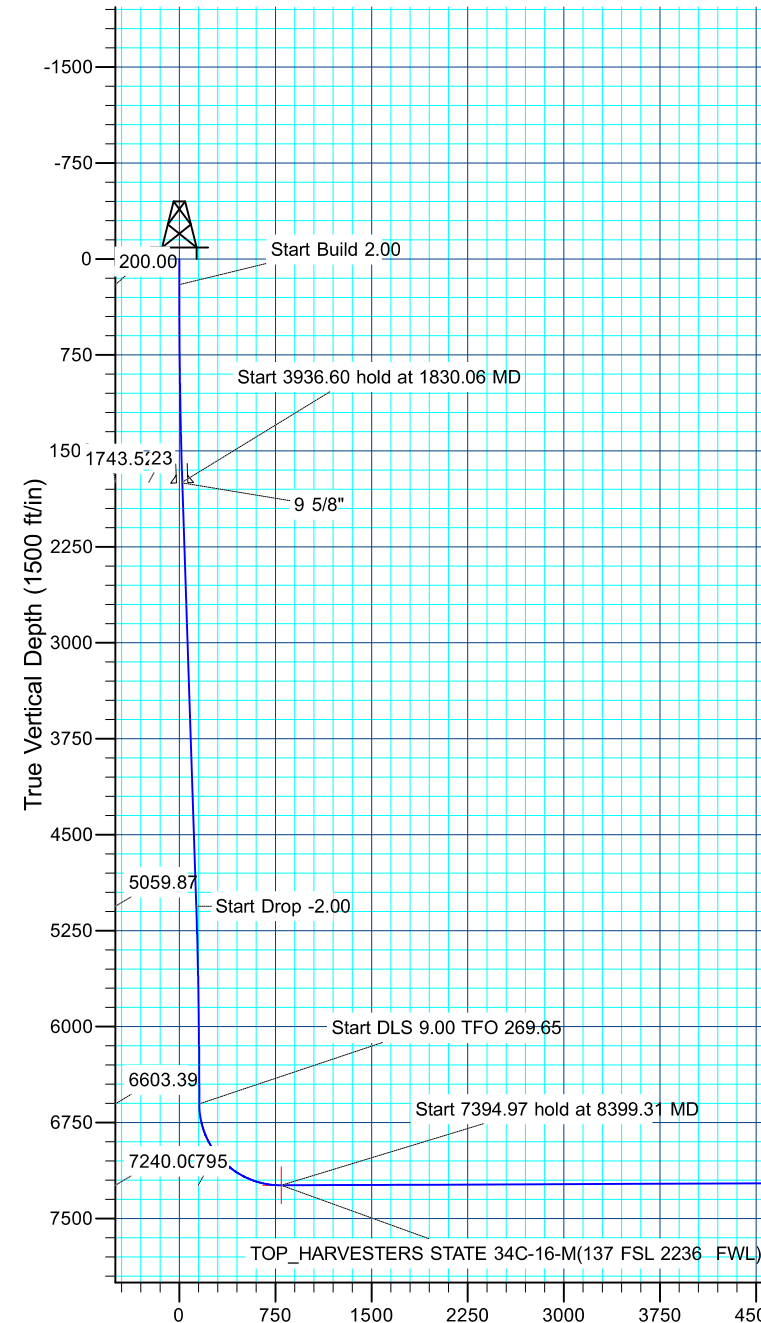
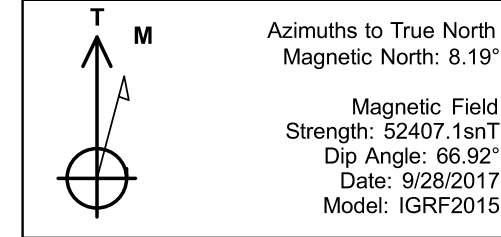




Project: SECTION 15, T6N, R66W
Site: HARVESTERS STATE 7-15 PAD
Well: HARVESTERS STATE 34C-16-M
Wellbore: OH
Design: PLAN #1
Lat: 40.4898030
Long: -104.7625210



DESIGN TARGET DETAILS									
Name	TVD	+N/-S	+E/-W	Northing	Easting	Latitude	Longitude	Shape	
PBHL	7210.00	-3069.72	-8173.66	1418991.05	3196973.26	40.4813730	-104.7919040	Point	
- plan hits target center									
TOP	7240.00	-3024.43	-778.89	1419097.83	3204367.38	40.4815010	-104.7653210	Point	
- plan hits target center									
SECTION DETAILS									
MD	Inc	Azi	TVD	+N/-S	+E/-W	Dleg	TFace	VSect	Target
0.00	0.00	0.00	0.00	0.00	0.00	0.00	0.00	0.00	
200.00	0.00	0.00	200.00	0.00	0.00	0.00	0.00	0.00	
1830.06	32.60	182.65	1743.52	-450.89	-20.85	2.00	182.65	23.26	
5766.67	32.60	182.65	5059.87	-2569.63	-118.85	0.00	0.00	132.56	
7396.73	0.00	0.00	6603.39	-3020.52	-139.70	2.00	180.00	155.82	
8399.31	90.23	269.65	7240.00	-3024.43	-778.89	9.00	269.65	795.03	
15794.28	90.23	269.65	7210.00	-3069.72	-8173.66	0.00	0.00	8189.94	PBHL
CASING DETAILS						PROJECT DETAILS: SECTION 15, T6N, R66W			
TVD	MD	Name	Size	Geodetic System: US State Plane 1983 Datum: North American Datum 1983 Ellipsoid: GRS 1980 Zone: Colorado Northern Zone Colorado Northern Zone System Datum: Mean Sea Level					
1750.00	1837.76	9 5/8"	9.625						

Vertical Section at 269.69° (1500 ft/in)



SRC ENERGY

**SECTION 15, T6N, R66W
HARVESTERS STATE 7-15 PAD
HARVESTERS STATE 34C-16-M**

OH

Plan: PLAN #1

Standard Planning Report

02 October, 2017



Database:	EDM 5000.14 Single User Db	Local Co-ordinate Reference:	Well HARVESTERS STATE 34C-16-
Company:	SRC ENERGY	TVD Reference:	M KB @ 4819.00ft
Project:	SECTION 15, T6N, R66W	MD Reference:	KB @ 4819.00ft
Site:	HARVESTERS STATE 7-15 PAD	North Reference:	True
Well:	HARVESTERS STATE 34C-16-	Survey Calculation Method:	Minimum Curvature
Wellbore:	M OH		
Design:	PLAN #1		

Project	SECTION 15, T6N, R66W		
Map System:	US State Plane 1983	System Datum:	Mean Sea Level
Geo Datum:	North American Datum 1983		
Map Zone:	Colorado Northern Zone		

Site	HARVESTERS STATE 7-15 PAD			
Site Position:		Northing:	1,422,648.53 usft	Latitude: 40.4912300
From:	Lat/Long	Easting:	3,205,120.94 usft	Longitude: -104.7625060
Position Uncertainty:	3.28 ft	Slot Radius:	13.200 in	Grid Convergence: 0.48 °

Well	HARVESTERS STATE 34C-16-M, 2113' FNL & 2337' FEL			
Well Position	+N/-S	-519.87 ft	Northing:	1,422,128.64 usft
	+E/-W	-4.17 ft	Easting:	3,205,121.09 usft
Position Uncertainty		3.28 ft	Wellhead Elevation:	Ground Level: 4,799.00 ft

Wellbore	OH				
Magnetics	Model Name	Sample Date	Declination (°)	Dip Angle (°)	Field Strength (nT)
	IGRF2015	9/28/2017	8.19	66.92	52,407

Design	PLAN #1			
Audit Notes:				
Version:	Phase:	PLAN	Tie On Depth:	0.00
Vertical Section:	Depth From (TVD) (ft)	+N/-S (ft)	+E/-W (ft)	Direction (°)
	0.00	0.00	0.00	269.69

Plan Survey Tool Program	Date	10/2/2017		
Depth From (ft)	Depth To (ft)	Survey (Wellbore)	Tool Name	Remarks
1	0.00	15,794.13 PLAN #1 (OH)	MWD+IFR1	
			OWSG MWD + IFR1	

Plan Sections										
Measured Depth (ft)	Inclination (°)	Azimuth (°)	Vertical Depth (ft)	+N/-S (ft)	+E/-W (ft)	Dogleg Rate (°/100ft)	Build Rate (°/100ft)	Turn Rate (°/100ft)	TFO (°)	Target
0.00	0.00	0.00	0.00	0.00	0.00	0.00	0.00	0.00	0.00	
200.00	0.00	0.00	200.00	0.00	0.00	0.00	0.00	0.00	0.00	
1,830.06	32.60	182.65	1,743.52	-450.89	-20.85	2.00	2.00	0.00	182.65	
5,766.67	32.60	182.65	5,059.87	-2,569.63	-118.85	0.00	0.00	0.00	0.00	
7,396.73	0.00	0.00	6,603.39	-3,020.52	-139.70	2.00	-2.00	0.00	180.00	
8,399.31	90.23	269.65	7,240.00	-3,024.44	-778.89	9.00	9.00	-9.01	269.65	
15,794.28	90.23	269.65	7,210.00	-3,069.73	-8,173.66	0.00	0.00	0.00	0.00	PBHL_HARVESTERS

Database:	EDM 5000.14 Single User Db	Local Co-ordinate Reference:	Well HARVESTERS STATE 34C-16-
Company:	SRC ENERGY	TVD Reference:	M KB @ 4819.00ft
Project:	SECTION 15, T6N, R66W	MD Reference:	KB @ 4819.00ft
Site:	HARVESTERS STATE 7-15 PAD	North Reference:	True
Well:	HARVESTERS STATE 34C-16-	Survey Calculation Method:	Minimum Curvature
Wellbore:	M OH		
Design:	PLAN #1		

Planned Survey									
Measured Depth (ft)	Inclination (°)	Azimuth (°)	Vertical Depth (ft)	+N/-S (ft)	+E/-W (ft)	Vertical Section (ft)	Dogleg Rate (°/100ft)	Build Rate (°/100ft)	Turn Rate (°/100ft)
0.00	0.00	0.00	0.00	0.00	0.00	0.00	0.00	0.00	0.00
100.00	0.00	0.00	100.00	0.00	0.00	0.00	0.00	0.00	0.00
200.00	0.00	0.00	200.00	0.00	0.00	0.00	0.00	0.00	0.00
Start Build 2.00									
300.00	2.00	182.65	299.98	-1.74	-0.08	0.09	2.00	2.00	0.00
400.00	4.00	182.65	399.84	-6.97	-0.32	0.36	2.00	2.00	0.00
500.00	6.00	182.65	499.45	-15.68	-0.73	0.81	2.00	2.00	0.00
600.00	8.00	182.65	598.70	-27.85	-1.29	1.44	2.00	2.00	0.00
700.00	10.00	182.65	697.47	-43.48	-2.01	2.24	2.00	2.00	0.00
800.00	12.00	182.65	795.62	-62.54	-2.89	3.23	2.00	2.00	0.00
900.00	14.00	182.65	893.06	-85.01	-3.93	4.39	2.00	2.00	0.00
1,000.00	16.00	182.65	989.64	-110.86	-5.13	5.72	2.00	2.00	0.00
1,100.00	18.00	182.65	1,085.27	-140.06	-6.48	7.23	2.00	2.00	0.00
1,200.00	20.00	182.65	1,179.82	-172.58	-7.98	8.90	2.00	2.00	0.00
1,300.00	22.00	182.65	1,273.17	-208.38	-9.64	10.75	2.00	2.00	0.00
1,400.00	24.00	182.65	1,365.21	-247.41	-11.44	12.76	2.00	2.00	0.00
1,500.00	26.00	182.65	1,455.84	-289.62	-13.40	14.94	2.00	2.00	0.00
1,600.00	28.00	182.65	1,544.94	-334.97	-15.49	17.28	2.00	2.00	0.00
1,700.00	30.00	182.65	1,632.39	-383.40	-17.73	19.78	2.00	2.00	0.00
1,800.00	32.00	182.65	1,718.11	-434.85	-20.11	22.43	2.00	2.00	0.00
1,830.06	32.60	182.65	1,743.52	-450.89	-20.85	23.26	2.00	2.00	0.00
Start 3936.60 hold at 1830.06 MD									
1,837.76	32.60	182.65	1,750.00	-455.03	-21.05	23.47	0.00	0.00	0.00
9 5/8"									
1,900.00	32.60	182.65	1,802.44	-488.53	-22.59	25.20	0.00	0.00	0.00
2,000.00	32.60	182.65	1,886.68	-542.36	-25.08	27.98	0.00	0.00	0.00
2,100.00	32.60	182.65	1,970.92	-596.18	-27.57	30.76	0.00	0.00	0.00
2,200.00	32.60	182.65	2,055.17	-650.00	-30.06	33.53	0.00	0.00	0.00
2,300.00	32.60	182.65	2,139.41	-703.82	-32.55	36.31	0.00	0.00	0.00
2,400.00	32.60	182.65	2,223.66	-757.64	-35.04	39.09	0.00	0.00	0.00
2,500.00	32.60	182.65	2,307.90	-811.46	-37.53	41.86	0.00	0.00	0.00
2,600.00	32.60	182.65	2,392.14	-865.28	-40.02	44.64	0.00	0.00	0.00
2,700.00	32.60	182.65	2,476.39	-919.10	-42.51	47.42	0.00	0.00	0.00
2,800.00	32.60	182.65	2,560.63	-972.93	-45.00	50.19	0.00	0.00	0.00
2,900.00	32.60	182.65	2,644.88	-1,026.75	-47.49	52.97	0.00	0.00	0.00
3,000.00	32.60	182.65	2,729.12	-1,080.57	-49.98	55.75	0.00	0.00	0.00
3,100.00	32.60	182.65	2,813.36	-1,134.39	-52.47	58.52	0.00	0.00	0.00
3,200.00	32.60	182.65	2,897.61	-1,188.21	-54.96	61.30	0.00	0.00	0.00
3,300.00	32.60	182.65	2,981.85	-1,242.03	-57.44	64.07	0.00	0.00	0.00
3,400.00	32.60	182.65	3,066.10	-1,295.85	-59.93	66.85	0.00	0.00	0.00
3,500.00	32.60	182.65	3,150.34	-1,349.68	-62.42	69.63	0.00	0.00	0.00
3,600.00	32.60	182.65	3,234.58	-1,403.50	-64.91	72.40	0.00	0.00	0.00
3,700.00	32.60	182.65	3,318.83	-1,457.32	-67.40	75.18	0.00	0.00	0.00
3,800.00	32.60	182.65	3,403.07	-1,511.14	-69.89	77.96	0.00	0.00	0.00
3,900.00	32.60	182.65	3,487.32	-1,564.96	-72.38	80.73	0.00	0.00	0.00
4,000.00	32.60	182.65	3,571.56	-1,618.78	-74.87	83.51	0.00	0.00	0.00
4,100.00	32.60	182.65	3,655.80	-1,672.60	-77.36	86.29	0.00	0.00	0.00
4,200.00	32.60	182.65	3,740.05	-1,726.43	-79.85	89.06	0.00	0.00	0.00
4,300.00	32.60	182.65	3,824.29	-1,780.25	-82.34	91.84	0.00	0.00	0.00
4,400.00	32.60	182.65	3,908.54	-1,834.07	-84.83	94.62	0.00	0.00	0.00
4,500.00	32.60	182.65	3,992.78	-1,887.89	-87.32	97.39	0.00	0.00	0.00
4,600.00	32.60	182.65	4,077.03	-1,941.71	-89.80	100.17	0.00	0.00	0.00
4,700.00	32.60	182.65	4,161.27	-1,995.53	-92.29	102.95	0.00	0.00	0.00

Database:	EDM 5000.14 Single User Db	Local Co-ordinate Reference:	Well HARVESTERS STATE 34C-16-
Company:	SRC ENERGY	TVD Reference:	M KB @ 4819.00ft
Project:	SECTION 15, T6N, R66W	MD Reference:	KB @ 4819.00ft
Site:	HARVESTERS STATE 7-15 PAD	North Reference:	True
Well:	HARVESTERS STATE 34C-16-	Survey Calculation Method:	Minimum Curvature
Wellbore:	M OH		
Design:	PLAN #1		

Planned Survey									
Measured Depth (ft)	Inclination (°)	Azimuth (°)	Vertical Depth (ft)	+N/-S (ft)	+E/-W (ft)	Vertical Section (ft)	Dogleg Rate (°/100ft)	Build Rate (°/100ft)	Turn Rate (°/100ft)
4,800.00	32.60	182.65	4,245.51	-2,049.35	-94.78	105.72	0.00	0.00	0.00
4,900.00	32.60	182.65	4,329.76	-2,103.18	-97.27	108.50	0.00	0.00	0.00
5,000.00	32.60	182.65	4,414.00	-2,157.00	-99.76	111.28	0.00	0.00	0.00
5,100.00	32.60	182.65	4,498.25	-2,210.82	-102.25	114.05	0.00	0.00	0.00
5,200.00	32.60	182.65	4,582.49	-2,264.64	-104.74	116.83	0.00	0.00	0.00
5,300.00	32.60	182.65	4,666.73	-2,318.46	-107.23	119.61	0.00	0.00	0.00
5,400.00	32.60	182.65	4,750.98	-2,372.28	-109.72	122.38	0.00	0.00	0.00
5,500.00	32.60	182.65	4,835.22	-2,426.10	-112.21	125.16	0.00	0.00	0.00
5,600.00	32.60	182.65	4,919.47	-2,479.93	-114.70	127.94	0.00	0.00	0.00
5,700.00	32.60	182.65	5,003.71	-2,533.75	-117.19	130.71	0.00	0.00	0.00
5,766.67	32.60	182.65	5,059.87	-2,569.63	-118.85	132.56	0.00	0.00	0.00
Start Drop -2.00									
5,800.00	31.93	182.65	5,088.06	-2,587.40	-119.67	133.48	2.00	-2.00	0.00
5,900.00	29.93	182.65	5,173.83	-2,638.75	-122.04	136.13	2.00	-2.00	0.00
6,000.00	27.93	182.65	5,261.34	-2,687.08	-124.28	138.62	2.00	-2.00	0.00
6,100.00	25.93	182.65	5,350.49	-2,732.33	-126.37	140.96	2.00	-2.00	0.00
6,200.00	23.93	182.65	5,441.16	-2,774.44	-128.32	143.13	2.00	-2.00	0.00
6,300.00	21.93	182.65	5,533.25	-2,813.36	-130.12	145.14	2.00	-2.00	0.00
6,400.00	19.93	182.65	5,626.65	-2,849.05	-131.77	146.98	2.00	-2.00	0.00
6,500.00	17.93	182.65	5,721.23	-2,881.46	-133.27	148.65	2.00	-2.00	0.00
6,600.00	15.93	182.65	5,816.89	-2,910.56	-134.61	150.15	2.00	-2.00	0.00
6,700.00	13.93	182.65	5,913.51	-2,936.30	-135.80	151.48	2.00	-2.00	0.00
6,800.00	11.93	182.65	6,010.97	-2,958.66	-136.84	152.63	2.00	-2.00	0.00
6,900.00	9.93	182.65	6,109.15	-2,977.61	-137.72	153.61	2.00	-2.00	0.00
7,000.00	7.93	182.65	6,207.93	-2,993.12	-138.43	154.41	2.00	-2.00	0.00
7,100.00	5.93	182.65	6,307.19	-3,005.18	-138.99	155.03	2.00	-2.00	0.00
7,200.00	3.93	182.65	6,406.82	-3,013.78	-139.39	155.48	2.00	-2.00	0.00
7,300.00	1.93	182.65	6,506.68	-3,018.89	-139.62	155.74	2.00	-2.00	0.00
7,396.73	0.00	0.00	6,603.39	-3,020.52	-139.70	155.82	2.00	-2.00	0.00
Start DLS 9.00 TFO 269.65									
7,400.00	0.29	269.65	6,606.66	-3,020.52	-139.71	155.83	9.00	9.00	0.00
7,500.00	9.29	269.65	6,706.21	-3,020.57	-148.06	164.18	9.00	9.00	0.00
7,600.00	18.29	269.65	6,803.22	-3,020.72	-171.88	188.00	9.00	9.00	0.00
7,700.00	27.29	269.65	6,895.32	-3,020.95	-210.58	226.70	9.00	9.00	0.00
7,800.00	36.29	269.65	6,980.23	-3,021.28	-263.21	279.34	9.00	9.00	0.00
7,900.00	45.29	269.65	7,055.85	-3,021.68	-328.48	344.60	9.00	9.00	0.00
8,000.00	54.29	269.65	7,120.34	-3,022.14	-404.77	420.90	9.00	9.00	0.00
8,100.00	63.29	269.65	7,172.10	-3,022.67	-490.21	506.34	9.00	9.00	0.00
8,200.00	72.29	269.65	7,209.85	-3,023.23	-582.70	598.83	9.00	9.00	0.00
8,300.00	81.29	269.65	7,232.68	-3,023.83	-679.95	696.09	9.00	9.00	0.00
8,399.32	90.23	269.65	7,240.00	-3,024.44	-778.89	795.03	9.00	9.00	0.00
Start 7394.97 hold at 8399.31 MD - TOP_HARVESTERS STATE 34C-16-M(137 FSL 2236 FWL)									
8,400.00	90.23	269.65	7,240.00	-3,024.44	-779.58	795.71	0.00	0.00	0.00
8,500.00	90.23	269.65	7,239.60	-3,025.05	-879.58	895.71	0.00	0.00	0.00
8,600.00	90.23	269.65	7,239.19	-3,025.66	-979.57	995.71	0.00	0.00	0.00
8,700.00	90.23	269.65	7,238.78	-3,026.28	-1,079.57	1,095.71	0.00	0.00	0.00
8,800.00	90.23	269.65	7,238.38	-3,026.89	-1,179.57	1,195.71	0.00	0.00	0.00
8,900.00	90.23	269.65	7,237.97	-3,027.50	-1,279.56	1,295.71	0.00	0.00	0.00
9,000.00	90.23	269.65	7,237.57	-3,028.11	-1,379.56	1,395.71	0.00	0.00	0.00
9,100.00	90.23	269.65	7,237.16	-3,028.73	-1,479.56	1,495.71	0.00	0.00	0.00
9,200.00	90.23	269.65	7,236.76	-3,029.34	-1,579.56	1,595.71	0.00	0.00	0.00
9,300.00	90.23	269.65	7,236.35	-3,029.95	-1,679.55	1,695.71	0.00	0.00	0.00
9,400.00	90.23	269.65	7,235.94	-3,030.56	-1,779.55	1,795.71	0.00	0.00	0.00

Database:	EDM 5000.14 Single User Db	Local Co-ordinate Reference:	Well HARVESTERS STATE 34C-16-
Company:	SRC ENERGY	TVD Reference:	M KB @ 4819.00ft
Project:	SECTION 15, T6N, R66W	MD Reference:	KB @ 4819.00ft
Site:	HARVESTERS STATE 7-15 PAD	North Reference:	True
Well:	HARVESTERS STATE 34C-16-	Survey Calculation Method:	Minimum Curvature
Wellbore:	M OH		
Design:	PLAN #1		

Planned Survey									
Measured Depth (ft)	Inclination (°)	Azimuth (°)	Vertical Depth (ft)	+N/-S (ft)	+E/-W (ft)	Vertical Section (ft)	Dogleg Rate (°/100ft)	Build Rate (°/100ft)	Turn Rate (°/100ft)
9,500.00	90.23	269.65	7,235.54	-3,031.18	-1,879.55	1,895.70	0.00	0.00	0.00
9,600.00	90.23	269.65	7,235.13	-3,031.79	-1,979.55	1,995.70	0.00	0.00	0.00
9,700.00	90.23	269.65	7,234.73	-3,032.40	-2,079.54	2,095.70	0.00	0.00	0.00
9,800.00	90.23	269.65	7,234.32	-3,033.01	-2,179.54	2,195.70	0.00	0.00	0.00
9,900.00	90.23	269.65	7,233.92	-3,033.63	-2,279.54	2,295.70	0.00	0.00	0.00
10,000.00	90.23	269.65	7,233.51	-3,034.24	-2,379.54	2,395.70	0.00	0.00	0.00
10,100.00	90.23	269.65	7,233.10	-3,034.85	-2,479.53	2,495.70	0.00	0.00	0.00
10,200.00	90.23	269.65	7,232.70	-3,035.46	-2,579.53	2,595.70	0.00	0.00	0.00
10,300.00	90.23	269.65	7,232.29	-3,036.08	-2,679.53	2,695.70	0.00	0.00	0.00
10,400.00	90.23	269.65	7,231.89	-3,036.69	-2,779.52	2,795.70	0.00	0.00	0.00
10,500.00	90.23	269.65	7,231.48	-3,037.30	-2,879.52	2,895.70	0.00	0.00	0.00
10,600.00	90.23	269.65	7,231.08	-3,037.91	-2,979.52	2,995.70	0.00	0.00	0.00
10,700.00	90.23	269.65	7,230.67	-3,038.53	-3,079.52	3,095.69	0.00	0.00	0.00
10,800.00	90.23	269.65	7,230.26	-3,039.14	-3,179.51	3,195.69	0.00	0.00	0.00
10,900.00	90.23	269.65	7,229.86	-3,039.75	-3,279.51	3,295.69	0.00	0.00	0.00
11,000.00	90.23	269.65	7,229.45	-3,040.36	-3,379.51	3,395.69	0.00	0.00	0.00
11,100.00	90.23	269.65	7,229.05	-3,040.98	-3,479.51	3,495.69	0.00	0.00	0.00
11,200.00	90.23	269.65	7,228.64	-3,041.59	-3,579.50	3,595.69	0.00	0.00	0.00
11,300.00	90.23	269.65	7,228.24	-3,042.20	-3,679.50	3,695.69	0.00	0.00	0.00
11,400.00	90.23	269.65	7,227.83	-3,042.81	-3,779.50	3,795.69	0.00	0.00	0.00
11,500.00	90.23	269.65	7,227.42	-3,043.43	-3,879.49	3,895.69	0.00	0.00	0.00
11,600.00	90.23	269.65	7,227.02	-3,044.04	-3,979.49	3,995.69	0.00	0.00	0.00
11,700.00	90.23	269.65	7,226.61	-3,044.65	-4,079.49	4,095.69	0.00	0.00	0.00
11,800.00	90.23	269.65	7,226.21	-3,045.26	-4,179.49	4,195.69	0.00	0.00	0.00
11,900.00	90.23	269.65	7,225.80	-3,045.88	-4,279.48	4,295.68	0.00	0.00	0.00
12,000.00	90.23	269.65	7,225.40	-3,046.49	-4,379.48	4,395.68	0.00	0.00	0.00
12,100.00	90.23	269.65	7,224.99	-3,047.10	-4,479.48	4,495.68	0.00	0.00	0.00
12,200.00	90.23	269.65	7,224.58	-3,047.71	-4,579.48	4,595.68	0.00	0.00	0.00
12,300.00	90.23	269.65	7,224.18	-3,048.33	-4,679.47	4,695.68	0.00	0.00	0.00
12,400.00	90.23	269.65	7,223.77	-3,048.94	-4,779.47	4,795.68	0.00	0.00	0.00
12,500.00	90.23	269.65	7,223.37	-3,049.55	-4,879.47	4,895.68	0.00	0.00	0.00
12,600.00	90.23	269.65	7,222.96	-3,050.16	-4,979.46	4,995.68	0.00	0.00	0.00
12,700.00	90.23	269.65	7,222.55	-3,050.78	-5,079.46	5,095.68	0.00	0.00	0.00
12,800.00	90.23	269.65	7,222.15	-3,051.39	-5,179.46	5,195.68	0.00	0.00	0.00
12,900.00	90.23	269.65	7,221.74	-3,052.00	-5,279.46	5,295.68	0.00	0.00	0.00
13,000.00	90.23	269.65	7,221.34	-3,052.61	-5,379.45	5,395.68	0.00	0.00	0.00
13,100.00	90.23	269.65	7,220.93	-3,053.23	-5,479.45	5,495.67	0.00	0.00	0.00
13,200.00	90.23	269.65	7,220.53	-3,053.84	-5,579.45	5,595.67	0.00	0.00	0.00
13,300.00	90.23	269.65	7,220.12	-3,054.45	-5,679.45	5,695.67	0.00	0.00	0.00
13,400.00	90.23	269.65	7,219.71	-3,055.06	-5,779.44	5,795.67	0.00	0.00	0.00
13,500.00	90.23	269.65	7,219.31	-3,055.68	-5,879.44	5,895.67	0.00	0.00	0.00
13,600.00	90.23	269.65	7,218.90	-3,056.29	-5,979.44	5,995.67	0.00	0.00	0.00
13,700.00	90.23	269.65	7,218.50	-3,056.90	-6,079.44	6,095.67	0.00	0.00	0.00
13,800.00	90.23	269.65	7,218.09	-3,057.51	-6,179.43	6,195.67	0.00	0.00	0.00
13,900.00	90.23	269.65	7,217.69	-3,058.13	-6,279.43	6,295.67	0.00	0.00	0.00
14,000.00	90.23	269.65	7,217.28	-3,058.74	-6,379.43	6,395.67	0.00	0.00	0.00
14,100.00	90.23	269.65	7,216.87	-3,059.35	-6,479.42	6,495.67	0.00	0.00	0.00
14,200.00	90.23	269.65	7,216.47	-3,059.96	-6,579.42	6,595.66	0.00	0.00	0.00
14,300.00	90.23	269.65	7,216.06	-3,060.58	-6,679.42	6,695.66	0.00	0.00	0.00
14,400.00	90.23	269.65	7,215.66	-3,061.19	-6,779.42	6,795.66	0.00	0.00	0.00
14,500.00	90.23	269.65	7,215.25	-3,061.80	-6,879.41	6,895.66	0.00	0.00	0.00
14,600.00	90.23	269.65	7,214.85	-3,062.41	-6,979.41	6,995.66	0.00	0.00	0.00
14,700.00	90.23	269.65	7,214.44	-3,063.03	-7,079.41	7,095.66	0.00	0.00	0.00
14,800.00	90.23	269.65	7,214.03	-3,063.64	-7,179.41	7,195.66	0.00	0.00	0.00

Database:	EDM 5000.14 Single User Db	Local Co-ordinate Reference:	Well HARVESTERS STATE 34C-16-
Company:	SRC ENERGY	TVD Reference:	M KB @ 4819.00ft
Project:	SECTION 15, T6N, R66W	MD Reference:	KB @ 4819.00ft
Site:	HARVESTERS STATE 7-15 PAD	North Reference:	True
Well:	HARVESTERS STATE 34C-16-	Survey Calculation Method:	Minimum Curvature
Wellbore:	M OH		
Design:	PLAN #1		

Planned Survey									
Measured Depth (ft)	Inclination (°)	Azimuth (°)	Vertical Depth (ft)	+N/-S (ft)	+E/-W (ft)	Vertical Section (ft)	Dogleg Rate (°/100ft)	Build Rate (°/100ft)	Turn Rate (°/100ft)
14,900.00	90.23	269.65	7,213.63	-3,064.25	-7,279.40	7,295.66	0.00	0.00	0.00
15,000.00	90.23	269.65	7,213.22	-3,064.86	-7,379.40	7,395.66	0.00	0.00	0.00
15,100.00	90.23	269.65	7,212.82	-3,065.48	-7,479.40	7,495.66	0.00	0.00	0.00
15,200.00	90.23	269.65	7,212.41	-3,066.09	-7,579.39	7,595.66	0.00	0.00	0.00
15,300.00	90.23	269.65	7,212.01	-3,066.70	-7,679.39	7,695.66	0.00	0.00	0.00
15,400.00	90.23	269.65	7,211.60	-3,067.31	-7,779.39	7,795.65	0.00	0.00	0.00
15,500.00	90.23	269.65	7,211.19	-3,067.93	-7,879.39	7,895.65	0.00	0.00	0.00
15,600.00	90.23	269.65	7,210.79	-3,068.54	-7,979.38	7,995.65	0.00	0.00	0.00
15,700.00	90.23	269.65	7,210.38	-3,069.15	-8,079.38	8,095.65	0.00	0.00	0.00
15,794.28	90.23	269.65	7,210.00	-3,069.73	-8,173.66	8,189.94	0.00	0.00	0.00
TD at 15794.28 - PBHL_HARVESTERS STATE 34C-16-M(168 FSL 150 FWL)									

Design Targets									
Target Name	Dip Angle (°)	Dip Dir. (°)	TVD (ft)	+N/-S (ft)	+E/-W (ft)	Northing (usft)	Easting (usft)	Latitude	Longitude
- hit/miss target									
- Shape									
PBHL_HARVESTERS S	0.00	0.00	7,210.00	-3,069.73	-8,173.66	1,418,991.05	3,196,973.26	40.4813730	-104.7919040
- plan hits target center									
- Point									
TOP_HARVESTERS ST	0.00	0.00	7,240.00	-3,024.44	-778.89	1,419,097.83	3,204,367.38	40.4815010	-104.7653210
- plan misses target center by 0.01ft at 8399.31ft MD (7240.00 TVD, -3024.44 N, -778.89 E)									
- Point									

Casing Points					
Measured Depth (ft)	Vertical Depth (ft)	Name		Casing Diameter (in)	Hole Diameter (in)
1,837.76	1,750.00	9 5/8"		9.625	13.500

Plan Annotations				
Measured Depth (ft)	Vertical Depth (ft)	Local Coordinates		Comment
		+N/-S (ft)	+E/-W (ft)	
200.00	200.00	0.00	0.00	Start Build 2.00
1,830.06	1,743.52	-450.89	-20.85	Start 3936.60 hold at 1830.06 MD
5,766.67	5,059.87	-2,569.63	-118.85	Start Drop -2.00
7,396.73	6,603.39	-3,020.52	-139.70	Start DLS 9.00 TFO 269.65
8,399.31	7,240.00	-3,024.44	-778.89	Start 7394.97 hold at 8399.31 MD
15,794.28	7,210.00	-3,069.73	-8,173.66	TD at 15794.28