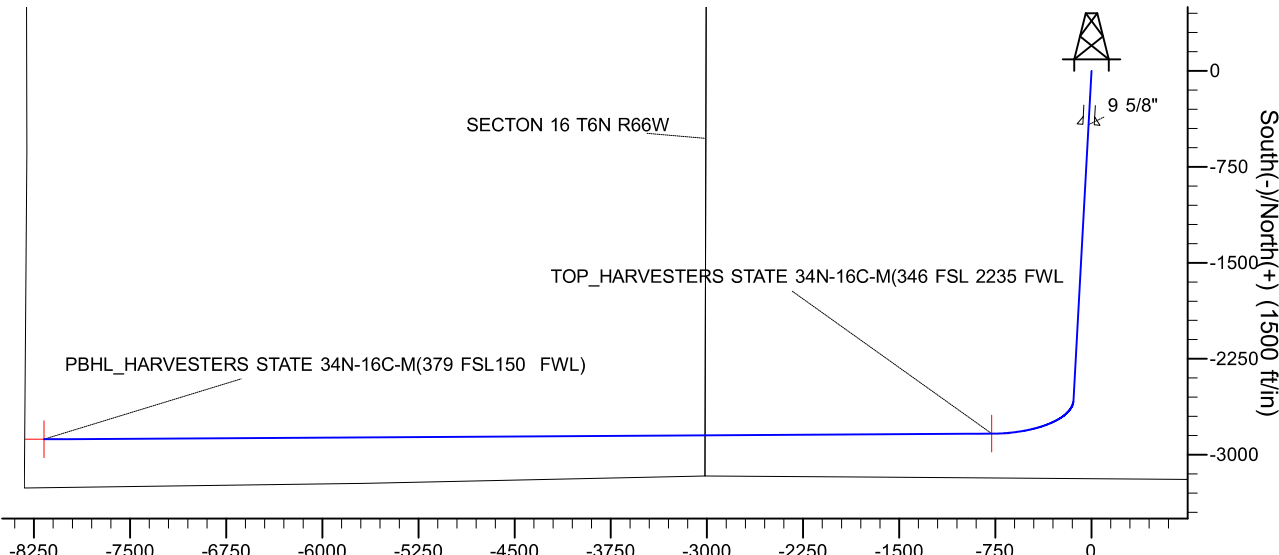
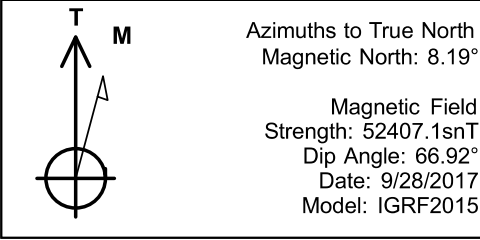




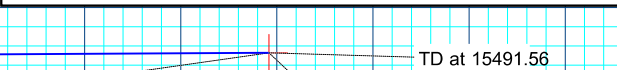
Project: SECTION 15, T6N, R66W
Site: HARVESTERS STATE 7-15 PAD
Well: HARVESTERS STATE 34N-16C-M
Wellbore: OH
Design: PLAN #1
Lat: 40.4898580
Long: -104.7625210



DESIGN TARGET DETAILS									
Name	TVD	+N/-S	+E/-W	Northing	Easting	Latitude	Longitude	Shape	
PBHL	7104.00	-2878.83	-8172.20	1419201.98	3196972.96	40.4819520	-104.7918990	Point	
TOP	- plan hits target center								
	7144.00	-2835.36	-779.16	1419306.93	3204365.37	40.4820750	-104.7653220	Point	
	- plan hits target center								

SECTION DETAILS									
MD	Inc	Azi	TVD	+N/-S	+E/-W	Dleg	TFace	VSect	Target
0.00	0.00	0.00	0.00	0.00	0.00	0.00	0.00	0.00	
200.00	0.00	0.00	200.00	0.00	0.00	0.00	0.00	0.00	
1405.73	24.11	183.13	1370.45	-249.64	-13.67	2.00	183.13	15.14	
7110.89	24.11	183.13	6577.71	-2577.07	-141.10	0.00	0.00	156.25	
8098.28	90.31	269.66	7144.00	-2835.36	-779.16	9.00	86.70	795.82	
15491.56	90.31	269.66	7104.00	-2878.83	-8172.20	0.00	0.00	8188.99	PBHL

CASING DETAILS				PROJECT DETAILS: SECTION 15, T6N, R66W	
TVD	MD	Name	Size	Geodetic System: US State Plane 1983 Datum: North American Datum 1983 Ellipsoid: GRS 1980 Zone: Colorado Northern Zone Colorado Northern Zone System Datum: Mean Sea Level	
1750.00	1821.57	9 5/8"	9.625		



TD at 15491.56

Vertical Section at 269.66° (1500 ft/in)



SRC ENERGY

**SECTION 15, T6N, R66W
HARVESTERS STATE 7-15 PAD
HARVESTERS STATE 34N-16C-M**

OH

Plan: PLAN #1

Standard Planning Report

02 October, 2017





Database:	EDM 5000.14 Single User Db	Local Co-ordinate Reference:	Well HARVESTERS STATE 34N-16C-M
Company:	SRC ENERGY	TVD Reference:	KB @ 4819.00ft
Project:	SECTION 15, T6N, R66W	MD Reference:	KB @ 4819.00ft
Site:	HARVESTERS STATE 7-15 PAD	North Reference:	True
Well:	HARVESTERS STATE 34N-16C-M	Survey Calculation Method:	Minimum Curvature
Wellbore:	OH		
Design:	PLAN #1		

Project	SECTION 15, T6N, R66W		
Map System:	US State Plane 1983	System Datum:	Mean Sea Level
Geo Datum:	North American Datum 1983		
Map Zone:	Colorado Northern Zone		

Site	HARVESTERS STATE 7-15 PAD			
Site Position:		Northing:	1,422,648.53 usft	Latitude: 40.4912300
From:	Lat/Long	Easting:	3,205,120.94 usft	Longitude: -104.7625060
Position Uncertainty:	3.28 ft	Slot Radius:	13.200 in	Grid Convergence: 0.48 °

Well	HARVESTERS STATE 34N-16C-M, 2093' FNL & 2337' FEL			
Well Position	+N/-S	-499.83 ft	Northing:	1,422,148.68 usft
	+E/-W	-4.17 ft	Easting:	3,205,120.93 usft
Position Uncertainty		3.28 ft	Wellhead Elevation:	Latitude: 40.4898580
				Longitude: -104.7625210
				Ground Level: 4,799.00 ft

Wellbore	OH				
Magnetics	Model Name	Sample Date	Declination (°)	Dip Angle (°)	Field Strength (nT)
	IGRF2015	9/28/2017	8.19	66.92	52,407

Design	PLAN #1			
Audit Notes:				
Version:	Phase:	PLAN	Tie On Depth:	0.00
Vertical Section:	Depth From (TVD) (ft)	+N/-S (ft)	+E/-W (ft)	Direction (°)
	0.00	0.00	0.00	269.66

Plan Survey Tool Program	Date	10/2/2017		
Depth From (ft)	Depth To (ft)	Survey (Wellbore)	Tool Name	Remarks
1	0.00	15,491.55	PLAN #1 (OH)	MWD+IFR1
				OWSG MWD + IFR1

Plan Sections										
Measured Depth (ft)	Inclination (°)	Azimuth (°)	Vertical Depth (ft)	+N/-S (ft)	+E/-W (ft)	Dogleg Rate (°/100ft)	Build Rate (°/100ft)	Turn Rate (°/100ft)	TFO (°)	Target
0.00	0.00	0.00	0.00	0.00	0.00	0.00	0.00	0.00	0.00	
200.00	0.00	0.00	200.00	0.00	0.00	0.00	0.00	0.00	0.00	
1,405.74	24.11	183.13	1,370.45	-249.64	-13.67	2.00	2.00	0.00	183.13	
7,110.89	24.11	183.13	6,577.71	-2,577.07	-141.10	0.00	0.00	0.00	0.00	
8,098.28	90.31	269.66	7,144.00	-2,835.36	-779.16	9.00	6.70	8.76	86.70	
15,491.56	90.31	269.66	7,104.00	-2,878.83	-8,172.20	0.00	0.00	0.00	0.00	PBHL_HARVESTERS

Database:	EDM 5000.14 Single User Db	Local Co-ordinate Reference:	Well HARVESTERS STATE 34N-16C-M
Company:	SRC ENERGY	TVD Reference:	KB @ 4819.00ft
Project:	SECTION 15, T6N, R66W	MD Reference:	KB @ 4819.00ft
Site:	HARVESTERS STATE 7-15 PAD	North Reference:	True
Well:	HARVESTERS STATE 34N-16C-M	Survey Calculation Method:	Minimum Curvature
Wellbore:	OH		
Design:	PLAN #1		

Planned Survey									
Measured Depth (ft)	Inclination (°)	Azimuth (°)	Vertical Depth (ft)	+N/-S (ft)	+E/-W (ft)	Vertical Section (ft)	Dogleg Rate (°/100ft)	Build Rate (°/100ft)	Turn Rate (°/100ft)
0.00	0.00	0.00	0.00	0.00	0.00	0.00	0.00	0.00	0.00
100.00	0.00	0.00	100.00	0.00	0.00	0.00	0.00	0.00	0.00
200.00	0.00	0.00	200.00	0.00	0.00	0.00	0.00	0.00	0.00
Start Build 2.00									
300.00	2.00	183.13	299.98	-1.74	-0.10	0.11	2.00	2.00	0.00
400.00	4.00	183.13	399.84	-6.97	-0.38	0.42	2.00	2.00	0.00
500.00	6.00	183.13	499.45	-15.67	-0.86	0.95	2.00	2.00	0.00
600.00	8.00	183.13	598.70	-27.84	-1.52	1.69	2.00	2.00	0.00
700.00	10.00	183.13	697.47	-43.46	-2.38	2.63	2.00	2.00	0.00
800.00	12.00	183.13	795.62	-62.51	-3.42	3.79	2.00	2.00	0.00
900.00	14.00	183.13	893.06	-84.97	-4.65	5.15	2.00	2.00	0.00
1,000.00	16.00	183.13	989.64	-110.81	-6.07	6.72	2.00	2.00	0.00
1,100.00	18.00	183.13	1,085.27	-140.00	-7.67	8.49	2.00	2.00	0.00
1,200.00	20.00	183.13	1,179.82	-172.51	-9.45	10.46	2.00	2.00	0.00
1,300.00	22.00	183.13	1,273.17	-208.29	-11.40	12.63	2.00	2.00	0.00
1,400.00	24.00	183.13	1,365.21	-247.30	-13.54	14.99	2.00	2.00	0.00
1,405.74	24.11	183.13	1,370.45	-249.64	-13.67	15.14	2.00	2.00	0.00
Start 5705.15 hold at 1405.73 MD									
1,500.00	24.11	183.13	1,456.49	-288.09	-15.77	17.47	0.00	0.00	0.00
1,600.00	24.11	183.13	1,547.76	-328.89	-18.01	19.94	0.00	0.00	0.00
1,700.00	24.11	183.13	1,639.04	-369.68	-20.24	22.41	0.00	0.00	0.00
1,800.00	24.11	183.13	1,730.31	-410.48	-22.47	24.89	0.00	0.00	0.00
1,821.57	24.11	183.13	1,750.00	-419.28	-22.96	25.42	0.00	0.00	0.00
9 5/8"									
1,900.00	24.11	183.13	1,821.58	-451.28	-24.71	27.36	0.00	0.00	0.00
2,000.00	24.11	183.13	1,912.85	-492.07	-26.94	29.83	0.00	0.00	0.00
2,100.00	24.11	183.13	2,004.13	-532.87	-29.18	32.31	0.00	0.00	0.00
2,200.00	24.11	183.13	2,095.40	-573.66	-31.41	34.78	0.00	0.00	0.00
2,300.00	24.11	183.13	2,186.67	-614.46	-33.64	37.25	0.00	0.00	0.00
2,400.00	24.11	183.13	2,277.95	-655.25	-35.88	39.73	0.00	0.00	0.00
2,500.00	24.11	183.13	2,369.22	-696.05	-38.11	42.20	0.00	0.00	0.00
2,600.00	24.11	183.13	2,460.49	-736.84	-40.34	44.68	0.00	0.00	0.00
2,700.00	24.11	183.13	2,551.77	-777.64	-42.58	47.15	0.00	0.00	0.00
2,800.00	24.11	183.13	2,643.04	-818.43	-44.81	49.62	0.00	0.00	0.00
2,900.00	24.11	183.13	2,734.31	-859.23	-47.04	52.10	0.00	0.00	0.00
3,000.00	24.11	183.13	2,825.58	-900.02	-49.28	54.57	0.00	0.00	0.00
3,100.00	24.11	183.13	2,916.86	-940.82	-51.51	57.04	0.00	0.00	0.00
3,200.00	24.11	183.13	3,008.13	-981.61	-53.74	59.52	0.00	0.00	0.00
3,300.00	24.11	183.13	3,099.40	-1,022.41	-55.98	61.99	0.00	0.00	0.00
3,400.00	24.11	183.13	3,190.68	-1,063.21	-58.21	64.46	0.00	0.00	0.00
3,500.00	24.11	183.13	3,281.95	-1,104.00	-60.45	66.94	0.00	0.00	0.00
3,600.00	24.11	183.13	3,373.22	-1,144.80	-62.68	69.41	0.00	0.00	0.00
3,700.00	24.11	183.13	3,464.49	-1,185.59	-64.91	71.88	0.00	0.00	0.00
3,800.00	24.11	183.13	3,555.77	-1,226.39	-67.15	74.36	0.00	0.00	0.00
3,900.00	24.11	183.13	3,647.04	-1,267.18	-69.38	76.83	0.00	0.00	0.00
4,000.00	24.11	183.13	3,738.31	-1,307.98	-71.61	79.30	0.00	0.00	0.00
4,100.00	24.11	183.13	3,829.59	-1,348.77	-73.85	81.78	0.00	0.00	0.00
4,200.00	24.11	183.13	3,920.86	-1,389.57	-76.08	84.25	0.00	0.00	0.00
4,300.00	24.11	183.13	4,012.13	-1,430.36	-78.31	86.72	0.00	0.00	0.00
4,400.00	24.11	183.13	4,103.41	-1,471.16	-80.55	89.20	0.00	0.00	0.00
4,500.00	24.11	183.13	4,194.68	-1,511.95	-82.78	91.67	0.00	0.00	0.00
4,600.00	24.11	183.13	4,285.95	-1,552.75	-85.02	94.14	0.00	0.00	0.00
4,700.00	24.11	183.13	4,377.22	-1,593.55	-87.25	96.62	0.00	0.00	0.00

Database:	EDM 5000.14 Single User Db	Local Co-ordinate Reference:	Well HARVESTERS STATE 34N-16C-M
Company:	SRC ENERGY	TVD Reference:	KB @ 4819.00ft
Project:	SECTION 15, T6N, R66W	MD Reference:	KB @ 4819.00ft
Site:	HARVESTERS STATE 7-15 PAD	North Reference:	True
Well:	HARVESTERS STATE 34N-16C-M	Survey Calculation Method:	Minimum Curvature
Wellbore:	OH		
Design:	PLAN #1		

Planned Survey									
Measured Depth (ft)	Inclination (°)	Azimuth (°)	Vertical Depth (ft)	+N/-S (ft)	+E/-W (ft)	Vertical Section (ft)	Dogleg Rate (°/100ft)	Build Rate (°/100ft)	Turn Rate (°/100ft)
4,800.00	24.11	183.13	4,468.50	-1,634.34	-89.48	99.09	0.00	0.00	0.00
4,900.00	24.11	183.13	4,559.77	-1,675.14	-91.72	101.56	0.00	0.00	0.00
5,000.00	24.11	183.13	4,651.04	-1,715.93	-93.95	104.04	0.00	0.00	0.00
5,100.00	24.11	183.13	4,742.32	-1,756.73	-96.18	106.51	0.00	0.00	0.00
5,200.00	24.11	183.13	4,833.59	-1,797.52	-98.42	108.98	0.00	0.00	0.00
5,300.00	24.11	183.13	4,924.86	-1,838.32	-100.65	111.46	0.00	0.00	0.00
5,400.00	24.11	183.13	5,016.13	-1,879.11	-102.88	113.93	0.00	0.00	0.00
5,500.00	24.11	183.13	5,107.41	-1,919.91	-105.12	116.41	0.00	0.00	0.00
5,600.00	24.11	183.13	5,198.68	-1,960.70	-107.35	118.88	0.00	0.00	0.00
5,700.00	24.11	183.13	5,289.95	-2,001.50	-109.59	121.35	0.00	0.00	0.00
5,800.00	24.11	183.13	5,381.23	-2,042.29	-111.82	123.83	0.00	0.00	0.00
5,900.00	24.11	183.13	5,472.50	-2,083.09	-114.05	126.30	0.00	0.00	0.00
6,000.00	24.11	183.13	5,563.77	-2,123.89	-116.29	128.77	0.00	0.00	0.00
6,100.00	24.11	183.13	5,655.05	-2,164.68	-118.52	131.25	0.00	0.00	0.00
6,200.00	24.11	183.13	5,746.32	-2,205.48	-120.75	133.72	0.00	0.00	0.00
6,300.00	24.11	183.13	5,837.59	-2,246.27	-122.99	136.19	0.00	0.00	0.00
6,400.00	24.11	183.13	5,928.86	-2,287.07	-125.22	138.67	0.00	0.00	0.00
6,500.00	24.11	183.13	6,020.14	-2,327.86	-127.45	141.14	0.00	0.00	0.00
6,600.00	24.11	183.13	6,111.41	-2,368.66	-129.69	143.61	0.00	0.00	0.00
6,700.00	24.11	183.13	6,202.68	-2,409.45	-131.92	146.09	0.00	0.00	0.00
6,800.00	24.11	183.13	6,293.96	-2,450.25	-134.15	148.56	0.00	0.00	0.00
6,900.00	24.11	183.13	6,385.23	-2,491.04	-136.39	151.03	0.00	0.00	0.00
7,000.00	24.11	183.13	6,476.50	-2,531.84	-138.62	153.51	0.00	0.00	0.00
7,100.00	24.11	183.13	6,567.77	-2,572.63	-140.86	155.98	0.00	0.00	0.00
7,110.89	24.11	183.13	6,577.71	-2,577.07	-141.10	156.25	0.00	0.00	0.00
Start DLS 9.00 TFO 86.70									
7,200.00	25.77	201.82	6,658.64	-2,613.30	-149.31	164.67	9.00	1.86	20.97
7,300.00	30.02	218.88	6,747.14	-2,653.03	-173.14	188.73	9.00	4.24	17.06
7,400.00	35.91	231.44	6,831.10	-2,690.87	-211.85	227.67	9.00	5.90	12.56
7,500.00	42.78	240.65	6,908.46	-2,725.86	-264.49	280.51	9.00	6.86	9.22
7,600.00	50.21	247.68	6,977.30	-2,757.16	-329.76	345.97	9.00	7.43	7.02
7,700.00	57.98	253.30	7,035.93	-2,783.99	-406.06	422.42	9.00	7.77	5.62
7,800.00	65.95	258.03	7,082.92	-2,805.69	-491.51	508.00	9.00	7.98	4.73
7,900.00	74.06	262.19	7,117.09	-2,821.72	-584.00	600.58	9.00	8.11	4.17
8,000.00	82.24	266.03	7,137.62	-2,831.70	-681.25	697.89	9.00	8.18	3.84
8,098.28	90.31	269.66	7,144.00	-2,835.36	-779.16	795.82	9.00	8.21	3.69
Start 7393.28 hold at 8098.28 MD									
8,098.29	90.31	269.66	7,144.00	-2,835.36	-779.16	795.82	0.00	0.00	0.00
TOP_HARVESTERS STATE 34N-16C-M(346 FSL 2235 FWL									
8,100.00	90.31	269.66	7,143.99	-2,835.37	-780.88	797.54	0.00	0.00	0.00
8,200.00	90.31	269.66	7,143.45	-2,835.96	-880.87	897.53	0.00	0.00	0.00
8,300.00	90.31	269.66	7,142.91	-2,836.55	-980.87	997.53	0.00	0.00	0.00
8,400.00	90.31	269.66	7,142.37	-2,837.14	-1,080.87	1,097.53	0.00	0.00	0.00
8,500.00	90.31	269.66	7,141.83	-2,837.73	-1,180.86	1,197.53	0.00	0.00	0.00
8,600.00	90.31	269.66	7,141.29	-2,838.31	-1,280.86	1,297.53	0.00	0.00	0.00
8,700.00	90.31	269.66	7,140.75	-2,838.90	-1,380.86	1,397.53	0.00	0.00	0.00
8,800.00	90.31	269.66	7,140.21	-2,839.49	-1,480.85	1,497.53	0.00	0.00	0.00
8,900.00	90.31	269.66	7,139.67	-2,840.08	-1,580.85	1,597.52	0.00	0.00	0.00
9,000.00	90.31	269.66	7,139.12	-2,840.67	-1,680.85	1,697.52	0.00	0.00	0.00
9,100.00	90.31	269.66	7,138.58	-2,841.25	-1,780.85	1,797.52	0.00	0.00	0.00
9,200.00	90.31	269.66	7,138.04	-2,841.84	-1,880.84	1,897.52	0.00	0.00	0.00
9,300.00	90.31	269.66	7,137.50	-2,842.43	-1,980.84	1,997.52	0.00	0.00	0.00
9,400.00	90.31	269.66	7,136.96	-2,843.02	-2,080.84	2,097.52	0.00	0.00	0.00

Database:	EDM 5000.14 Single User Db	Local Co-ordinate Reference:	Well HARVESTERS STATE 34N-16C-M
Company:	SRC ENERGY	TVD Reference:	KB @ 4819.00ft
Project:	SECTION 15, T6N, R66W	MD Reference:	KB @ 4819.00ft
Site:	HARVESTERS STATE 7-15 PAD	North Reference:	True
Well:	HARVESTERS STATE 34N-16C-M	Survey Calculation Method:	Minimum Curvature
Wellbore:	OH		
Design:	PLAN #1		

Planned Survey									
Measured Depth (ft)	Inclination (°)	Azimuth (°)	Vertical Depth (ft)	+N/-S (ft)	+E/-W (ft)	Vertical Section (ft)	Dogleg Rate (°/100ft)	Build Rate (°/100ft)	Turn Rate (°/100ft)
9,500.00	90.31	269.66	7,136.42	-2,843.61	-2,180.83	2,197.51	0.00	0.00	0.00
9,600.00	90.31	269.66	7,135.88	-2,844.19	-2,280.83	2,297.51	0.00	0.00	0.00
9,700.00	90.31	269.66	7,135.34	-2,844.78	-2,380.83	2,397.51	0.00	0.00	0.00
9,800.00	90.31	269.66	7,134.80	-2,845.37	-2,480.82	2,497.51	0.00	0.00	0.00
9,900.00	90.31	269.66	7,134.26	-2,845.96	-2,580.82	2,597.51	0.00	0.00	0.00
10,000.00	90.31	269.66	7,133.71	-2,846.55	-2,680.82	2,697.51	0.00	0.00	0.00
10,100.00	90.31	269.66	7,133.17	-2,847.13	-2,780.81	2,797.51	0.00	0.00	0.00
10,200.00	90.31	269.66	7,132.63	-2,847.72	-2,880.81	2,897.50	0.00	0.00	0.00
10,300.00	90.31	269.66	7,132.09	-2,848.31	-2,980.81	2,997.50	0.00	0.00	0.00
10,400.00	90.31	269.66	7,131.55	-2,848.90	-3,080.80	3,097.50	0.00	0.00	0.00
10,500.00	90.31	269.66	7,131.01	-2,849.49	-3,180.80	3,197.50	0.00	0.00	0.00
10,600.00	90.31	269.66	7,130.47	-2,850.07	-3,280.80	3,297.50	0.00	0.00	0.00
10,700.00	90.31	269.66	7,129.93	-2,850.66	-3,380.79	3,397.50	0.00	0.00	0.00
10,800.00	90.31	269.66	7,129.39	-2,851.25	-3,480.79	3,497.50	0.00	0.00	0.00
10,900.00	90.31	269.66	7,128.84	-2,851.84	-3,580.79	3,597.49	0.00	0.00	0.00
11,000.00	90.31	269.66	7,128.30	-2,852.42	-3,680.78	3,697.49	0.00	0.00	0.00
11,100.00	90.31	269.66	7,127.76	-2,853.01	-3,780.78	3,797.49	0.00	0.00	0.00
11,200.00	90.31	269.66	7,127.22	-2,853.60	-3,880.78	3,897.49	0.00	0.00	0.00
11,300.00	90.31	269.66	7,126.68	-2,854.19	-3,980.77	3,997.49	0.00	0.00	0.00
11,400.00	90.31	269.66	7,126.14	-2,854.78	-4,080.77	4,097.49	0.00	0.00	0.00
11,500.00	90.31	269.66	7,125.60	-2,855.36	-4,180.77	4,197.49	0.00	0.00	0.00
11,600.00	90.31	269.66	7,125.06	-2,855.95	-4,280.77	4,297.48	0.00	0.00	0.00
11,700.00	90.31	269.66	7,124.52	-2,856.54	-4,380.76	4,397.48	0.00	0.00	0.00
11,800.00	90.31	269.66	7,123.97	-2,857.13	-4,480.76	4,497.48	0.00	0.00	0.00
11,900.00	90.31	269.66	7,123.43	-2,857.72	-4,580.76	4,597.48	0.00	0.00	0.00
12,000.00	90.31	269.66	7,122.89	-2,858.30	-4,680.75	4,697.48	0.00	0.00	0.00
12,100.00	90.31	269.66	7,122.35	-2,858.89	-4,780.75	4,797.48	0.00	0.00	0.00
12,200.00	90.31	269.66	7,121.81	-2,859.48	-4,880.75	4,897.48	0.00	0.00	0.00
12,300.00	90.31	269.66	7,121.27	-2,860.07	-4,980.74	4,997.47	0.00	0.00	0.00
12,400.00	90.31	269.66	7,120.73	-2,860.66	-5,080.74	5,097.47	0.00	0.00	0.00
12,500.00	90.31	269.66	7,120.19	-2,861.24	-5,180.74	5,197.47	0.00	0.00	0.00
12,600.00	90.31	269.66	7,119.65	-2,861.83	-5,280.73	5,297.47	0.00	0.00	0.00
12,700.00	90.31	269.66	7,119.10	-2,862.42	-5,380.73	5,397.47	0.00	0.00	0.00
12,800.00	90.31	269.66	7,118.56	-2,863.01	-5,480.73	5,497.47	0.00	0.00	0.00
12,900.00	90.31	269.66	7,118.02	-2,863.60	-5,580.72	5,597.47	0.00	0.00	0.00
13,000.00	90.31	269.66	7,117.48	-2,864.18	-5,680.72	5,697.46	0.00	0.00	0.00
13,100.00	90.31	269.66	7,116.94	-2,864.77	-5,780.72	5,797.46	0.00	0.00	0.00
13,200.00	90.31	269.66	7,116.40	-2,865.36	-5,880.71	5,897.46	0.00	0.00	0.00
13,300.00	90.31	269.66	7,115.86	-2,865.95	-5,980.71	5,997.46	0.00	0.00	0.00
13,400.00	90.31	269.66	7,115.32	-2,866.54	-6,080.71	6,097.46	0.00	0.00	0.00
13,500.00	90.31	269.66	7,114.78	-2,867.12	-6,180.70	6,197.46	0.00	0.00	0.00
13,600.00	90.31	269.66	7,114.24	-2,867.71	-6,280.70	6,297.46	0.00	0.00	0.00
13,700.00	90.31	269.66	7,113.69	-2,868.30	-6,380.70	6,397.45	0.00	0.00	0.00
13,800.00	90.31	269.66	7,113.15	-2,868.89	-6,480.70	6,497.45	0.00	0.00	0.00
13,900.00	90.31	269.66	7,112.61	-2,869.48	-6,580.69	6,597.45	0.00	0.00	0.00
14,000.00	90.31	269.66	7,112.07	-2,870.06	-6,680.69	6,697.45	0.00	0.00	0.00
14,100.00	90.31	269.66	7,111.53	-2,870.65	-6,780.69	6,797.45	0.00	0.00	0.00
14,200.00	90.31	269.66	7,110.99	-2,871.24	-6,880.68	6,897.45	0.00	0.00	0.00
14,300.00	90.31	269.66	7,110.45	-2,871.83	-6,980.68	6,997.44	0.00	0.00	0.00
14,400.00	90.31	269.66	7,109.91	-2,872.41	-7,080.68	7,097.44	0.00	0.00	0.00
14,500.00	90.31	269.66	7,109.37	-2,873.00	-7,180.67	7,197.44	0.00	0.00	0.00
14,600.00	90.31	269.66	7,108.82	-2,873.59	-7,280.67	7,297.44	0.00	0.00	0.00
14,700.00	90.31	269.66	7,108.28	-2,874.18	-7,380.67	7,397.44	0.00	0.00	0.00
14,800.00	90.31	269.66	7,107.74	-2,874.77	-7,480.66	7,497.44	0.00	0.00	0.00

Database:	EDM 5000.14 Single User Db	Local Co-ordinate Reference:	Well HARVESTERS STATE 34N-16C-M
Company:	SRC ENERGY	TVD Reference:	KB @ 4819.00ft
Project:	SECTION 15, T6N, R66W	MD Reference:	KB @ 4819.00ft
Site:	HARVESTERS STATE 7-15 PAD	North Reference:	True
Well:	HARVESTERS STATE 34N-16C-M	Survey Calculation Method:	Minimum Curvature
Wellbore:	OH		
Design:	PLAN #1		

Planned Survey									
Measured Depth (ft)	Inclination (°)	Azimuth (°)	Vertical Depth (ft)	+N/-S (ft)	+E/-W (ft)	Vertical Section (ft)	Dogleg Rate (°/100ft)	Build Rate (°/100ft)	Turn Rate (°/100ft)
14,900.00	90.31	269.66	7,107.20	-2,875.35	-7,580.66	7,597.44	0.00	0.00	0.00
15,000.00	90.31	269.66	7,106.66	-2,875.94	-7,680.66	7,697.43	0.00	0.00	0.00
15,100.00	90.31	269.66	7,106.12	-2,876.53	-7,780.65	7,797.43	0.00	0.00	0.00
15,200.00	90.31	269.66	7,105.58	-2,877.12	-7,880.65	7,897.43	0.00	0.00	0.00
15,300.00	90.31	269.66	7,105.04	-2,877.71	-7,980.65	7,997.43	0.00	0.00	0.00
15,400.00	90.31	269.66	7,104.50	-2,878.29	-8,080.64	8,097.43	0.00	0.00	0.00
15,491.56	90.31	269.66	7,104.00	-2,878.83	-8,172.20	8,188.99	0.00	0.00	0.00
TD at 15491.56 - PBHL_HARVESTERS STATE 34N-16C-M(379 FSL150 FWL)									

Design Targets									
Target Name	Dip Angle (°)	Dip Dir. (°)	TVD (ft)	+N/-S (ft)	+E/-W (ft)	Northing (usft)	Easting (usft)	Latitude	Longitude
- hit/miss target									
- Shape									
PBHL_HARVESTERS S	0.00	0.00	7,104.00	-2,878.83	-8,172.20	1,419,201.98	3,196,972.97	40.4819520	-104.7918990
- plan hits target center									
- Point									
TOP_HARVESTERS ST	0.00	0.00	7,144.00	-2,835.36	-779.16	1,419,306.94	3,204,365.37	40.4820750	-104.7653220
- plan hits target center									
- Point									

Casing Points					
Measured Depth (ft)	Vertical Depth (ft)	Name	Casing Diameter (in)	Hole Diameter (in)	
1,821.57	1,750.00	9 5/8"	9.625	13.500	

Plan Annotations				
Measured Depth (ft)	Vertical Depth (ft)	Local Coordinates		Comment
		+N/-S (ft)	+E/-W (ft)	
200.00	200.00	0.00	0.00	Start Build 2.00
1,405.74	1,370.45	-249.64	-13.67	Start 5705.15 hold at 1405.73 MD
7,110.89	6,577.71	-2,577.07	-141.10	Start DLS 9.00 TFO 86.70
8,098.28	7,144.00	-2,835.36	-779.16	Start 7393.28 hold at 8098.28 MD
15,491.56	7,104.00	-2,878.83	-8,172.20	TD at 15491.56