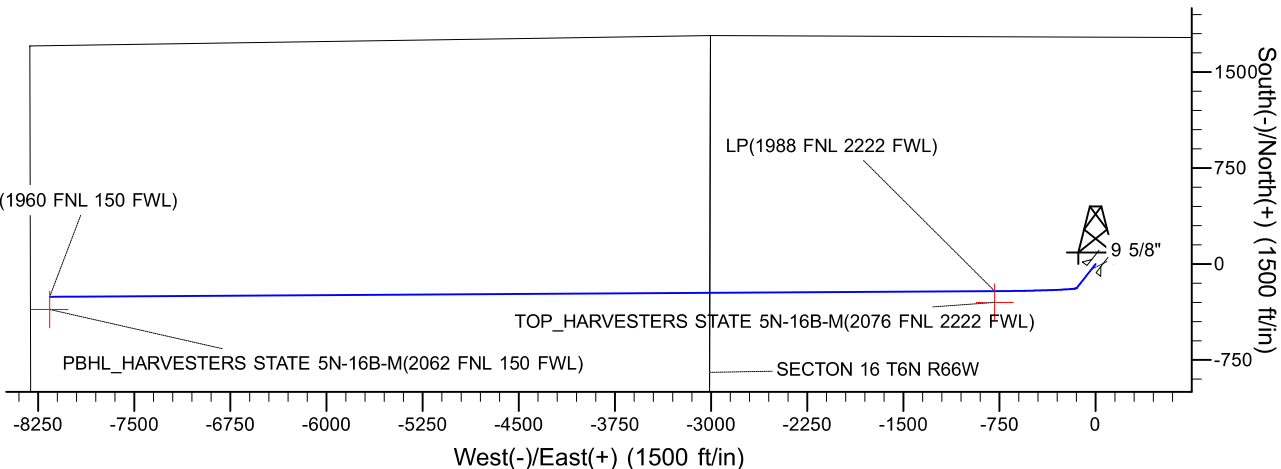
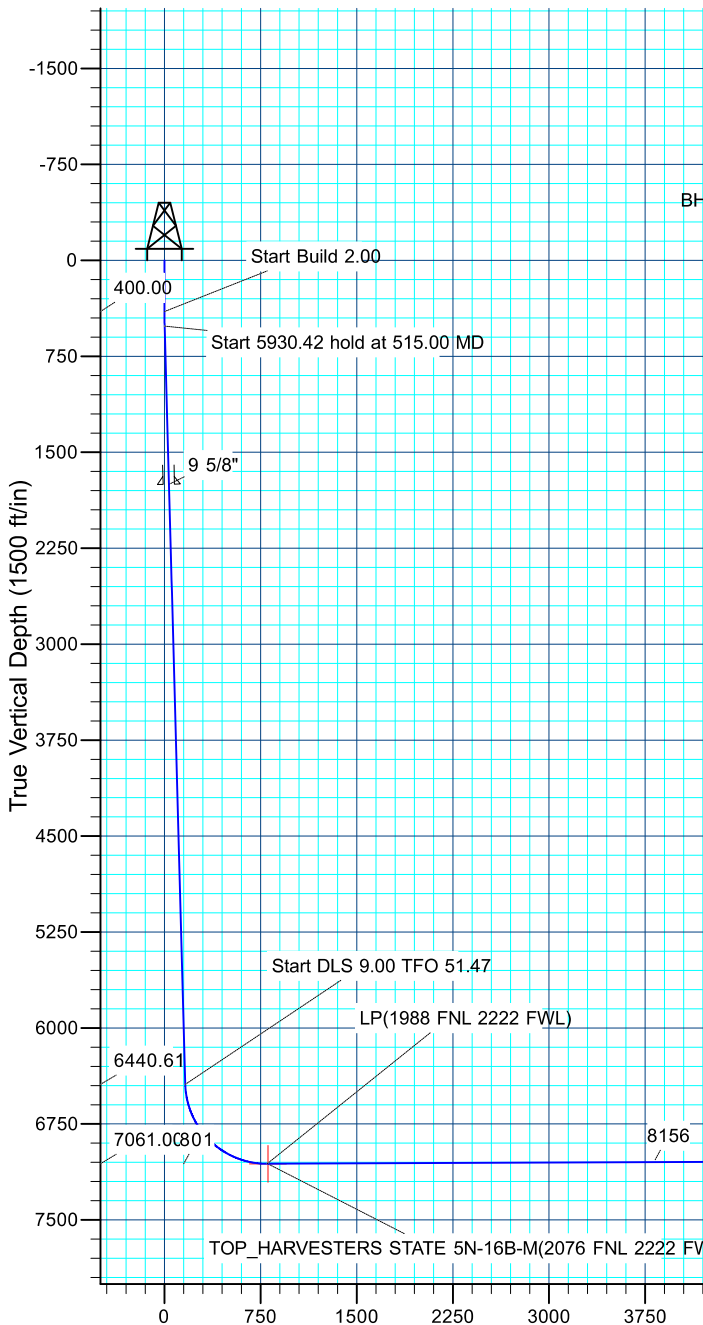
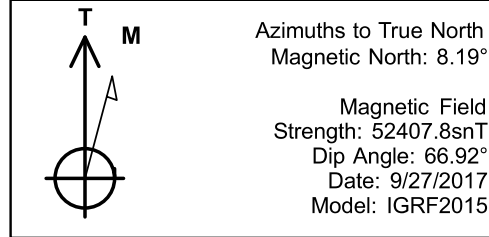




Project: SECTION 15, T6N, R66W
Site: HARVESTERS STATE 7-15 PAD
Well: HARVESTERS STATE 5N-16B-M
Wellbore: OH
Design: PLAN #1
Lat: 40.4907360
Long: -104.7625110



DESIGN TARGET DETAILS									
Name	TVD	+N/-S	+E/-W	Northing	Easting	Latitude	Longitude	Shape	
PBHL	7029.00	-356.39	-8159.86	1422044.31	3196964.45	40.4897540	-104.7918480	Point	
TOP	- plan misses target center by 100.00ft at 14804.66ft MD (7029.00 TVD, -256.39 N, -8159.86 E)								
	7061.00	-300.17	-787.14	1422161.84	3204336.43	40.4899120	-104.7653410	Point	
- plan misses target center by 87.93ft at 7432.26ft MD (7061.00 TVD, -212.25 N, -787.67 E)									
SECTION DETAILS									
MD	Inc	Azi	TVD	+N/-S	+E/-W	Dleg	TFace	VSect	Target
0.00	0.00	0.00	0.00	0.00	0.00	0.00	0.00	0.00	
400.00	0.00	0.00	400.00	0.00	0.00	0.00	0.00	0.00	
515.00	2.30	218.20	514.97	-1.81	-1.43	2.00	218.20	1.56	
6445.42	2.30	218.20	6440.61	-188.85	-148.61	0.00	0.00	162.48	
7432.26	90.25	269.66	7061.00	-212.25	-787.66	9.00	51.47	801.47	
14804.66	90.25	269.66	7029.00	-256.39	-8159.86	0.00	0.00	8155.84	
CASING DETAILS						PROJECT DETAILS: SECTION 15, T6N, R66W			
TVD	MD	Name	Size	Geodetic System: US State Plane 1983 Datum: North American Datum 1983 Ellipsoid: GRS 1980 Zone: Colorado Northern Zone Colorado Northern Zone System Datum: Mean Sea Level					
1750.00	1751.03	9 5/8"	9.625						
BHL(1960 FNL 150 FWL)									

Vertical Section at 265.66° (1500 ft/in)



SRC ENERGY

SECTION 15, T6N, R66W

HARVESTERS STATE 7-15 PAD

HARVESTERS STATE 5N-16B-M

OH

Plan: PLAN #1

Standard Planning Report

02 October, 2017





Database:	EDM 5000.14 Single User Db	Local Co-ordinate Reference:	Well HARVESTERS STATE 5N-16B-M
Company:	SRC ENERGY	TVD Reference:	KB @ 4821.00ft
Project:	SECTION 15, T6N, R66W	MD Reference:	KB @ 4821.00ft
Site:	HARVESTERS STATE 7-15 PAD	North Reference:	True
Well:	HARVESTERS STATE 5N-16B-M	Survey Calculation Method:	Minimum Curvature
Wellbore:	OH		
Design:	PLAN #1		

Project	SECTION 15, T6N, R66W		
Map System:	US State Plane 1983	System Datum:	Mean Sea Level
Geo Datum:	North American Datum 1983		
Map Zone:	Colorado Northern Zone		

Site	HARVESTERS STATE 7-15 PAD			
Site Position:		Northing:	1,422,648.53 usft	Latitude: 40.4912300
From:	Lat/Long	Easting:	3,205,120.94 usft	Longitude: -104.7625060
Position Uncertainty:	3.28 ft	Slot Radius:	13.200 in	Grid Convergence: 0.48 °

Well	HARVESTERS STATE 5N-16B-M, 1773' FNL & 2334' FEL			
Well Position	+N/-S	-179.97 ft	Northing:	1,422,468.55 usft
	+E/-W	-1.39 ft	Easting:	3,205,121.05 usft
Position Uncertainty		3.28 ft	Wellhead Elevation:	Latitude: 40.4907360
				Longitude: -104.7625110
				Ground Level: 4,801.00 ft

Wellbore	OH				
Magnetics	Model Name	Sample Date	Declination (°)	Dip Angle (°)	Field Strength (nT)
	IGRF2015	9/27/2017	8.19	66.92	52,408

Design	PLAN #1			
Audit Notes:				
Version:	Phase:	PLAN	Tie On Depth:	0.00
Vertical Section:	Depth From (TVD) (ft)	+N/-S (ft)	+E/-W (ft)	Direction (°)
	0.00	0.00	0.00	265.66

Plan Survey Tool Program	Date	10/2/2017		
Depth From (ft)	Depth To (ft)	Survey (Wellbore)	Tool Name	Remarks
1	0.00	14,804.66	PLAN #1 (OH)	MWD+IFR1
				OWSG MWD + IFR1

Plan Sections										
Measured Depth (ft)	Inclination (°)	Azimuth (°)	Vertical Depth (ft)	+N/-S (ft)	+E/-W (ft)	Dogleg Rate (°/100ft)	Build Rate (°/100ft)	Turn Rate (°/100ft)	TFO (°)	Target
0.00	0.00	0.00	0.00	0.00	0.00	0.00	0.00	0.00	0.00	
400.00	0.00	0.00	400.00	0.00	0.00	0.00	0.00	0.00	0.00	
515.00	2.30	218.20	514.97	-1.81	-1.43	2.00	2.00	0.00	218.20	
6,445.42	2.30	218.20	6,440.61	-188.85	-148.61	0.00	0.00	0.00	0.00	
7,432.26	90.25	269.66	7,061.00	-212.25	-787.66	9.00	8.91	5.21	51.47	
14,804.66	90.25	269.66	7,029.00	-256.39	-8,159.86	0.00	0.00	0.00	0.00	

Database:	EDM 5000.14 Single User Db	Local Co-ordinate Reference:	Well HARVESTERS STATE 5N-16B-M
Company:	SRC ENERGY	TVD Reference:	KB @ 4821.00ft
Project:	SECTION 15, T6N, R66W	MD Reference:	KB @ 4821.00ft
Site:	HARVESTERS STATE 7-15 PAD	North Reference:	True
Well:	HARVESTERS STATE 5N-16B-M	Survey Calculation Method:	Minimum Curvature
Wellbore:	OH		
Design:	PLAN #1		

Planned Survey									
Measured Depth (ft)	Inclination (°)	Azimuth (°)	Vertical Depth (ft)	+N/-S (ft)	+E/-W (ft)	Vertical Section (ft)	Dogleg Rate (°/100ft)	Build Rate (°/100ft)	Turn Rate (°/100ft)
0.00	0.00	0.00	0.00	0.00	0.00	0.00	0.00	0.00	0.00
100.00	0.00	0.00	100.00	0.00	0.00	0.00	0.00	0.00	0.00
200.00	0.00	0.00	200.00	0.00	0.00	0.00	0.00	0.00	0.00
300.00	0.00	0.00	300.00	0.00	0.00	0.00	0.00	0.00	0.00
400.00	0.00	0.00	400.00	0.00	0.00	0.00	0.00	0.00	0.00
Start Build 2.00									
500.00	2.00	218.20	499.98	-1.37	-1.08	1.18	2.00	2.00	0.00
515.00	2.30	218.20	514.97	-1.81	-1.43	1.56	2.00	2.00	0.00
Start 5930.42 hold at 515.00 MD									
600.00	2.30	218.20	599.90	-4.49	-3.54	3.87	0.00	0.00	0.00
700.00	2.30	218.20	699.82	-7.65	-6.02	6.58	0.00	0.00	0.00
800.00	2.30	218.20	799.74	-10.80	-8.50	9.29	0.00	0.00	0.00
900.00	2.30	218.20	899.66	-13.96	-10.98	12.01	0.00	0.00	0.00
1,000.00	2.30	218.20	999.58	-17.11	-13.46	14.72	0.00	0.00	0.00
1,100.00	2.30	218.20	1,099.50	-20.26	-15.95	17.43	0.00	0.00	0.00
1,200.00	2.30	218.20	1,199.42	-23.42	-18.43	20.15	0.00	0.00	0.00
1,300.00	2.30	218.20	1,299.34	-26.57	-20.91	22.86	0.00	0.00	0.00
1,400.00	2.30	218.20	1,399.26	-29.72	-23.39	25.57	0.00	0.00	0.00
1,500.00	2.30	218.20	1,499.18	-32.88	-25.87	28.29	0.00	0.00	0.00
1,600.00	2.30	218.20	1,599.10	-36.03	-28.35	31.00	0.00	0.00	0.00
1,700.00	2.30	218.20	1,699.01	-39.19	-30.84	33.72	0.00	0.00	0.00
1,751.03	2.30	218.20	1,750.00	-40.80	-32.10	35.10	0.00	0.00	0.00
9 5/8"									
1,800.00	2.30	218.20	1,798.93	-42.34	-33.32	36.43	0.00	0.00	0.00
1,900.00	2.30	218.20	1,898.85	-45.49	-35.80	39.14	0.00	0.00	0.00
2,000.00	2.30	218.20	1,998.77	-48.65	-38.28	41.86	0.00	0.00	0.00
2,100.00	2.30	218.20	2,098.69	-51.80	-40.76	44.57	0.00	0.00	0.00
2,200.00	2.30	218.20	2,198.61	-54.95	-43.25	47.28	0.00	0.00	0.00
2,300.00	2.30	218.20	2,298.53	-58.11	-45.73	50.00	0.00	0.00	0.00
2,400.00	2.30	218.20	2,398.45	-61.26	-48.21	52.71	0.00	0.00	0.00
2,500.00	2.30	218.20	2,498.37	-64.42	-50.69	55.42	0.00	0.00	0.00
2,600.00	2.30	218.20	2,598.29	-67.57	-53.17	58.14	0.00	0.00	0.00
2,700.00	2.30	218.20	2,698.21	-70.72	-55.65	60.85	0.00	0.00	0.00
2,800.00	2.30	218.20	2,798.13	-73.88	-58.14	63.56	0.00	0.00	0.00
2,900.00	2.30	218.20	2,898.05	-77.03	-60.62	66.28	0.00	0.00	0.00
3,000.00	2.30	218.20	2,997.97	-80.19	-63.10	68.99	0.00	0.00	0.00
3,100.00	2.30	218.20	3,097.89	-83.34	-65.58	71.70	0.00	0.00	0.00
3,200.00	2.30	218.20	3,197.81	-86.49	-68.06	74.42	0.00	0.00	0.00
3,300.00	2.30	218.20	3,297.73	-89.65	-70.54	77.13	0.00	0.00	0.00
3,400.00	2.30	218.20	3,397.65	-92.80	-73.03	79.84	0.00	0.00	0.00
3,500.00	2.30	218.20	3,497.56	-95.95	-75.51	82.56	0.00	0.00	0.00
3,600.00	2.30	218.20	3,597.48	-99.11	-77.99	85.27	0.00	0.00	0.00
3,700.00	2.30	218.20	3,697.40	-102.26	-80.47	87.99	0.00	0.00	0.00
3,800.00	2.30	218.20	3,797.32	-105.42	-82.95	90.70	0.00	0.00	0.00
3,900.00	2.30	218.20	3,897.24	-108.57	-85.44	93.41	0.00	0.00	0.00
4,000.00	2.30	218.20	3,997.16	-111.72	-87.92	96.13	0.00	0.00	0.00
4,100.00	2.30	218.20	4,097.08	-114.88	-90.40	98.84	0.00	0.00	0.00
4,200.00	2.30	218.20	4,197.00	-118.03	-92.88	101.55	0.00	0.00	0.00
4,300.00	2.30	218.20	4,296.92	-121.18	-95.36	104.27	0.00	0.00	0.00
4,400.00	2.30	218.20	4,396.84	-124.34	-97.84	106.98	0.00	0.00	0.00
4,500.00	2.30	218.20	4,496.76	-127.49	-100.33	109.69	0.00	0.00	0.00
4,600.00	2.30	218.20	4,596.68	-130.65	-102.81	112.41	0.00	0.00	0.00
4,700.00	2.30	218.20	4,696.60	-133.80	-105.29	115.12	0.00	0.00	0.00

Database:	EDM 5000.14 Single User Db	Local Co-ordinate Reference:	Well HARVESTERS STATE 5N-16B-M
Company:	SRC ENERGY	TVD Reference:	KB @ 4821.00ft
Project:	SECTION 15, T6N, R66W	MD Reference:	KB @ 4821.00ft
Site:	HARVESTERS STATE 7-15 PAD	North Reference:	True
Well:	HARVESTERS STATE 5N-16B-M	Survey Calculation Method:	Minimum Curvature
Wellbore:	OH		
Design:	PLAN #1		

Planned Survey									
Measured Depth (ft)	Inclination (°)	Azimuth (°)	Vertical Depth (ft)	+N/-S (ft)	+E/-W (ft)	Vertical Section (ft)	Dogleg Rate (°/100ft)	Build Rate (°/100ft)	Turn Rate (°/100ft)
4,800.00	2.30	218.20	4,796.52	-136.95	-107.77	117.83	0.00	0.00	0.00
4,900.00	2.30	218.20	4,896.44	-140.11	-110.25	120.55	0.00	0.00	0.00
5,000.00	2.30	218.20	4,996.36	-143.26	-112.74	123.26	0.00	0.00	0.00
5,100.00	2.30	218.20	5,096.28	-146.41	-115.22	125.97	0.00	0.00	0.00
5,200.00	2.30	218.20	5,196.19	-149.57	-117.70	128.69	0.00	0.00	0.00
5,300.00	2.30	218.20	5,296.11	-152.72	-120.18	131.40	0.00	0.00	0.00
5,400.00	2.30	218.20	5,396.03	-155.88	-122.66	134.11	0.00	0.00	0.00
5,500.00	2.30	218.20	5,495.95	-159.03	-125.14	136.83	0.00	0.00	0.00
5,600.00	2.30	218.20	5,595.87	-162.18	-127.63	139.54	0.00	0.00	0.00
5,700.00	2.30	218.20	5,695.79	-165.34	-130.11	142.25	0.00	0.00	0.00
5,800.00	2.30	218.20	5,795.71	-168.49	-132.59	144.97	0.00	0.00	0.00
5,900.00	2.30	218.20	5,895.63	-171.64	-135.07	147.68	0.00	0.00	0.00
6,000.00	2.30	218.20	5,995.55	-174.80	-137.55	150.40	0.00	0.00	0.00
6,100.00	2.30	218.20	6,095.47	-177.95	-140.03	153.11	0.00	0.00	0.00
6,200.00	2.30	218.20	6,195.39	-181.11	-142.52	155.82	0.00	0.00	0.00
6,300.00	2.30	218.20	6,295.31	-184.26	-145.00	158.54	0.00	0.00	0.00
6,400.00	2.30	218.20	6,395.23	-187.41	-147.48	161.25	0.00	0.00	0.00
6,445.42	2.30	218.20	6,440.61	-188.85	-148.61	162.48	0.00	0.00	0.00
Start DLS 9.00 TFO 51.47									
6,500.00	6.59	253.88	6,495.02	-190.58	-152.30	166.29	9.00	7.87	65.38
6,600.00	15.45	263.12	6,593.09	-193.77	-171.08	185.26	9.00	8.85	9.24
6,700.00	24.41	265.68	6,687.01	-196.93	-204.97	219.30	9.00	8.96	2.56
6,800.00	33.39	266.92	6,774.46	-199.97	-253.15	267.56	9.00	8.98	1.24
6,900.00	42.38	267.68	6,853.31	-202.83	-314.42	328.88	9.00	8.99	0.76
7,000.00	51.37	268.21	6,921.60	-205.42	-387.28	401.73	9.00	8.99	0.53
7,100.00	60.36	268.63	6,977.66	-207.68	-469.94	484.32	9.00	8.99	0.41
7,200.00	69.36	268.97	7,020.10	-209.57	-560.35	574.61	9.00	8.99	0.35
7,300.00	78.35	269.28	7,047.88	-211.03	-656.30	670.39	9.00	9.00	0.31
7,400.00	87.35	269.57	7,060.32	-212.03	-755.41	769.30	9.00	9.00	0.29
7,432.26	90.25	269.66	7,061.00	-212.25	-787.66	801.47	9.00	9.00	0.28
LP(1988 FNL 2222 FWL)									
7,432.27	90.25	269.66	7,061.00	-212.25	-787.67	801.48	0.00	0.00	0.00
TOP_HARVESTERS STATE 5N-16B-M(2076 FNL 2222 FWL)									
7,500.00	90.25	269.66	7,060.70	-212.65	-855.40	869.05	0.00	0.00	0.00
7,600.00	90.25	269.66	7,060.27	-213.25	-955.40	968.80	0.00	0.00	0.00
7,700.00	90.25	269.66	7,059.83	-213.85	-1,055.39	1,068.56	0.00	0.00	0.00
7,800.00	90.25	269.66	7,059.40	-214.45	-1,155.39	1,168.31	0.00	0.00	0.00
7,900.00	90.25	269.66	7,058.97	-215.05	-1,255.39	1,268.07	0.00	0.00	0.00
8,000.00	90.25	269.66	7,058.53	-215.65	-1,355.39	1,367.83	0.00	0.00	0.00
8,100.00	90.25	269.66	7,058.10	-216.25	-1,455.38	1,467.58	0.00	0.00	0.00
8,200.00	90.25	269.66	7,057.66	-216.84	-1,555.38	1,567.34	0.00	0.00	0.00
8,300.00	90.25	269.66	7,057.23	-217.44	-1,655.38	1,667.09	0.00	0.00	0.00
8,400.00	90.25	269.66	7,056.80	-218.04	-1,755.38	1,766.85	0.00	0.00	0.00
8,500.00	90.25	269.66	7,056.36	-218.64	-1,855.37	1,866.60	0.00	0.00	0.00
8,600.00	90.25	269.66	7,055.93	-219.24	-1,955.37	1,966.36	0.00	0.00	0.00
8,700.00	90.25	269.66	7,055.49	-219.84	-2,055.37	2,066.11	0.00	0.00	0.00
8,800.00	90.25	269.66	7,055.06	-220.44	-2,155.36	2,165.87	0.00	0.00	0.00
8,900.00	90.25	269.66	7,054.63	-221.04	-2,255.36	2,265.62	0.00	0.00	0.00
9,000.00	90.25	269.66	7,054.19	-221.63	-2,355.36	2,365.38	0.00	0.00	0.00
9,100.00	90.25	269.66	7,053.76	-222.23	-2,455.36	2,465.14	0.00	0.00	0.00
9,200.00	90.25	269.66	7,053.32	-222.83	-2,555.35	2,564.89	0.00	0.00	0.00
9,300.00	90.25	269.66	7,052.89	-223.43	-2,655.35	2,664.65	0.00	0.00	0.00
9,400.00	90.25	269.66	7,052.46	-224.03	-2,755.35	2,764.40	0.00	0.00	0.00

Database:	EDM 5000.14 Single User Db	Local Co-ordinate Reference:	Well HARVESTERS STATE 5N-16B-M
Company:	SRC ENERGY	TVD Reference:	KB @ 4821.00ft
Project:	SECTION 15, T6N, R66W	MD Reference:	KB @ 4821.00ft
Site:	HARVESTERS STATE 7-15 PAD	North Reference:	True
Well:	HARVESTERS STATE 5N-16B-M	Survey Calculation Method:	Minimum Curvature
Wellbore:	OH		
Design:	PLAN #1		

Planned Survey									
Measured Depth (ft)	Inclination (°)	Azimuth (°)	Vertical Depth (ft)	+N/-S (ft)	+E/-W (ft)	Vertical Section (ft)	Dogleg Rate (°/100ft)	Build Rate (°/100ft)	Turn Rate (°/100ft)
9,500.00	90.25	269.66	7,052.02	-224.63	-2,855.35	2,864.16	0.00	0.00	0.00
9,600.00	90.25	269.66	7,051.59	-225.23	-2,955.34	2,963.91	0.00	0.00	0.00
9,700.00	90.25	269.66	7,051.15	-225.83	-3,055.34	3,063.67	0.00	0.00	0.00
9,800.00	90.25	269.66	7,050.72	-226.42	-3,155.34	3,163.42	0.00	0.00	0.00
9,900.00	90.25	269.66	7,050.29	-227.02	-3,255.33	3,263.18	0.00	0.00	0.00
10,000.00	90.25	269.66	7,049.85	-227.62	-3,355.33	3,362.93	0.00	0.00	0.00
10,100.00	90.25	269.66	7,049.42	-228.22	-3,455.33	3,462.69	0.00	0.00	0.00
10,200.00	90.25	269.66	7,048.98	-228.82	-3,555.33	3,562.45	0.00	0.00	0.00
10,300.00	90.25	269.66	7,048.55	-229.42	-3,655.32	3,662.20	0.00	0.00	0.00
10,400.00	90.25	269.66	7,048.12	-230.02	-3,755.32	3,761.96	0.00	0.00	0.00
10,500.00	90.25	269.66	7,047.68	-230.62	-3,855.32	3,861.71	0.00	0.00	0.00
10,600.00	90.25	269.66	7,047.25	-231.21	-3,955.32	3,961.47	0.00	0.00	0.00
10,700.00	90.25	269.66	7,046.81	-231.81	-4,055.31	4,061.22	0.00	0.00	0.00
10,800.00	90.25	269.66	7,046.38	-232.41	-4,155.31	4,160.98	0.00	0.00	0.00
10,900.00	90.25	269.66	7,045.95	-233.01	-4,255.31	4,260.73	0.00	0.00	0.00
11,000.00	90.25	269.66	7,045.51	-233.61	-4,355.30	4,360.49	0.00	0.00	0.00
11,100.00	90.25	269.66	7,045.08	-234.21	-4,455.30	4,460.24	0.00	0.00	0.00
11,200.00	90.25	269.66	7,044.64	-234.81	-4,555.30	4,560.00	0.00	0.00	0.00
11,300.00	90.25	269.66	7,044.21	-235.41	-4,655.30	4,659.76	0.00	0.00	0.00
11,400.00	90.25	269.66	7,043.78	-236.00	-4,755.29	4,759.51	0.00	0.00	0.00
11,500.00	90.25	269.66	7,043.34	-236.60	-4,855.29	4,859.27	0.00	0.00	0.00
11,600.00	90.25	269.66	7,042.91	-237.20	-4,955.29	4,959.02	0.00	0.00	0.00
11,700.00	90.25	269.66	7,042.47	-237.80	-5,055.29	5,058.78	0.00	0.00	0.00
11,800.00	90.25	269.66	7,042.04	-238.40	-5,155.28	5,158.53	0.00	0.00	0.00
11,900.00	90.25	269.66	7,041.61	-239.00	-5,255.28	5,258.29	0.00	0.00	0.00
12,000.00	90.25	269.66	7,041.17	-239.60	-5,355.28	5,358.04	0.00	0.00	0.00
12,100.00	90.25	269.66	7,040.74	-240.20	-5,455.27	5,457.80	0.00	0.00	0.00
12,200.00	90.25	269.66	7,040.30	-240.79	-5,555.27	5,557.55	0.00	0.00	0.00
12,300.00	90.25	269.66	7,039.87	-241.39	-5,655.27	5,657.31	0.00	0.00	0.00
12,400.00	90.25	269.66	7,039.44	-241.99	-5,755.27	5,757.07	0.00	0.00	0.00
12,500.00	90.25	269.66	7,039.00	-242.59	-5,855.26	5,856.82	0.00	0.00	0.00
12,600.00	90.25	269.66	7,038.57	-243.19	-5,955.26	5,956.58	0.00	0.00	0.00
12,700.00	90.25	269.66	7,038.13	-243.79	-6,055.26	6,056.33	0.00	0.00	0.00
12,800.00	90.25	269.66	7,037.70	-244.39	-6,155.26	6,156.09	0.00	0.00	0.00
12,900.00	90.25	269.66	7,037.27	-244.99	-6,255.25	6,255.84	0.00	0.00	0.00
13,000.00	90.25	269.66	7,036.83	-245.58	-6,355.25	6,355.60	0.00	0.00	0.00
13,100.00	90.25	269.66	7,036.40	-246.18	-6,455.25	6,455.35	0.00	0.00	0.00
13,200.00	90.25	269.66	7,035.96	-246.78	-6,555.24	6,555.11	0.00	0.00	0.00
13,300.00	90.25	269.66	7,035.53	-247.38	-6,655.24	6,654.86	0.00	0.00	0.00
13,400.00	90.25	269.66	7,035.10	-247.98	-6,755.24	6,754.62	0.00	0.00	0.00
13,500.00	90.25	269.66	7,034.66	-248.58	-6,855.24	6,854.38	0.00	0.00	0.00
13,600.00	90.25	269.66	7,034.23	-249.18	-6,955.23	6,954.13	0.00	0.00	0.00
13,700.00	90.25	269.66	7,033.79	-249.78	-7,055.23	7,053.89	0.00	0.00	0.00
13,800.00	90.25	269.66	7,033.36	-250.37	-7,155.23	7,153.64	0.00	0.00	0.00
13,900.00	90.25	269.66	7,032.93	-250.97	-7,255.23	7,253.40	0.00	0.00	0.00
14,000.00	90.25	269.66	7,032.49	-251.57	-7,355.22	7,353.15	0.00	0.00	0.00
14,100.00	90.25	269.66	7,032.06	-252.17	-7,455.22	7,452.91	0.00	0.00	0.00
14,200.00	90.25	269.66	7,031.62	-252.77	-7,555.22	7,552.66	0.00	0.00	0.00
14,300.00	90.25	269.66	7,031.19	-253.37	-7,655.21	7,652.42	0.00	0.00	0.00
14,400.00	90.25	269.66	7,030.76	-253.97	-7,755.21	7,752.17	0.00	0.00	0.00
14,500.00	90.25	269.66	7,030.32	-254.57	-7,855.21	7,851.93	0.00	0.00	0.00
14,600.00	90.25	269.66	7,029.89	-255.16	-7,955.21	7,951.69	0.00	0.00	0.00
14,700.00	90.25	269.66	7,029.45	-255.76	-8,055.20	8,051.44	0.00	0.00	0.00
14,800.00	90.25	269.66	7,029.02	-256.36	-8,155.20	8,151.20	0.00	0.00	0.00



Database:	EDM 5000.14 Single User Db	Local Co-ordinate Reference:	Well HARVESTERS STATE 5N-16B-M
Company:	SRC ENERGY	TVD Reference:	KB @ 4821.00ft
Project:	SECTION 15, T6N, R66W	MD Reference:	KB @ 4821.00ft
Site:	HARVESTERS STATE 7-15 PAD	North Reference:	True
Well:	HARVESTERS STATE 5N-16B-M	Survey Calculation Method:	Minimum Curvature
Wellbore:	OH		
Design:	PLAN #1		

Planned Survey									
Measured Depth (ft)	Inclination (°)	Azimuth (°)	Vertical Depth (ft)	+N/-S (ft)	+E/-W (ft)	Vertical Section (ft)	Dogleg Rate (°/100ft)	Build Rate (°/100ft)	Turn Rate (°/100ft)
14,804.66	90.25	269.66	7,029.00	-256.39	-8,159.86	8,155.84	0.00	0.00	0.00
BHL(1960 FNL 150 FWL) - PBHL_HARVESTERS STATE 5N-16B-M(2062 FNL 150 FWL)									

Design Targets									
Target Name	Dip Angle (°)	Dip Dir. (°)	TVD (ft)	+N/-S (ft)	+E/-W (ft)	Northing (usft)	Easting (usft)	Latitude	Longitude
- hit/miss target									
- Shape									
PBHL_HARVESTERS S	0.00	0.00	7,029.00	-356.39	-8,159.86	1,422,044.31	3,196,964.45	40.4897540	-104.7918480
- plan misses target center by 100.00ft at 14804.66ft MD (7029.00 TVD, -256.39 N, -8159.86 E)									
- Point									
TOP_HARVESTERS ST	0.00	0.00	7,061.00	-300.17	-787.14	1,422,161.85	3,204,336.43	40.4899120	-104.7653410
- plan misses target center by 87.93ft at 7432.26ft MD (7061.00 TVD, -212.25 N, -787.67 E)									
- Point									

Casing Points					
Measured Depth (ft)	Vertical Depth (ft)	Name	Casing Diameter (in)	Hole Diameter (in)	
1,751.03	1,750.00	9 5/8"	9.625	13.500	

Plan Annotations				
Measured Depth (ft)	Vertical Depth (ft)	+N/-S (ft)	+E/-W (ft)	Comment
400.00	400.00	0.00	0.00	Start Build 2.00
515.00	514.97	-1.81	-1.43	Start 5930.42 hold at 515.00 MD
6,445.42	6,440.61	-188.85	-148.61	Start DLS 9.00 TFO 51.47
7,432.26	7,061.00	-212.25	-787.66	LP(1988 FNL 2222 FWL)
14,804.66	7,029.00	-256.39	-8,159.86	BHL(1960 FNL 150 FWL)