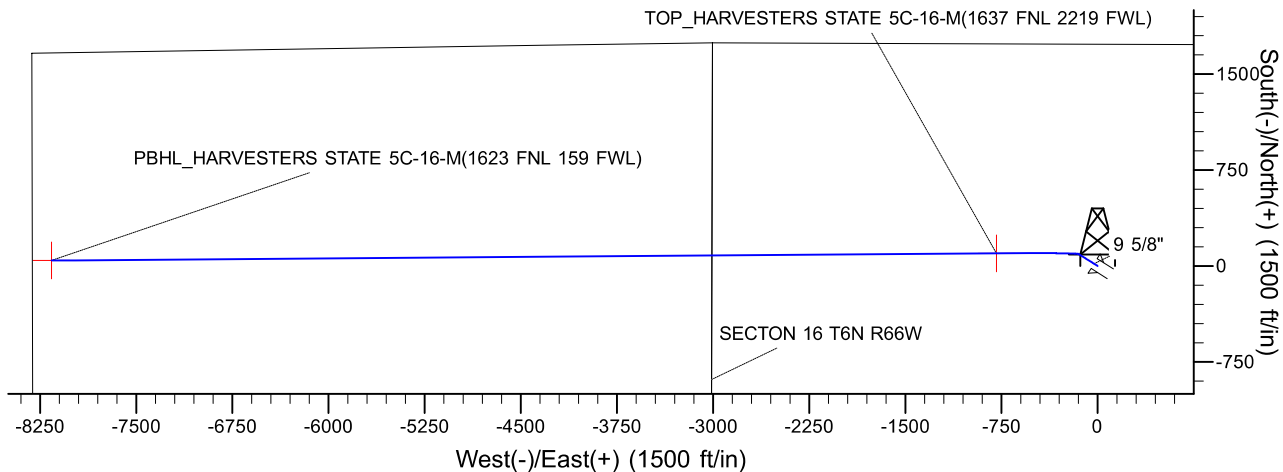
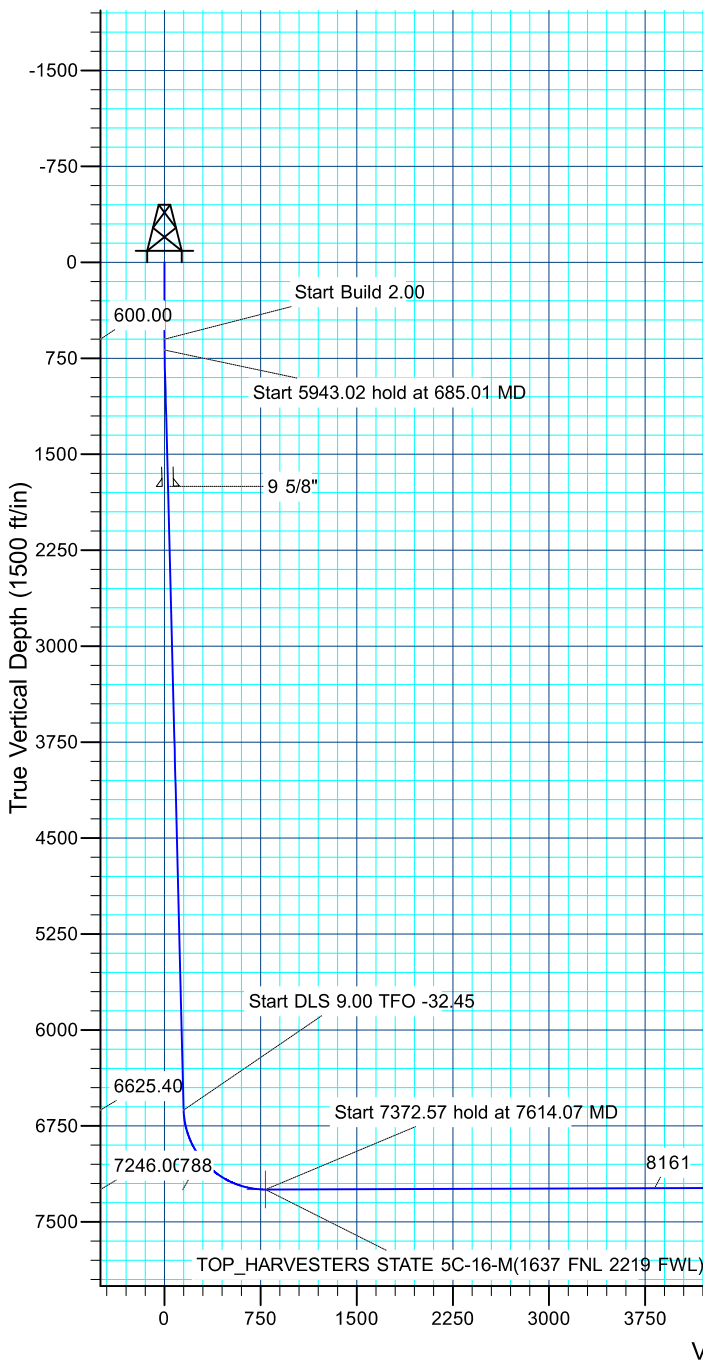
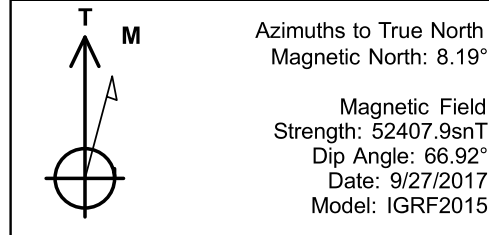




Project: SECTION 15, T6N, R66W  
Site: HARVESTERS STATE 7-15 PAD  
Well: HARVESTERS STATE 5C-16-M  
Wellbore: OH  
Design: PLAN #1  
Lat: 40.4908459  
Long: -104.7625100



DESIGN TARGET DETAILS								
Name	TVD	+N/-S	+E/-W	Northing	Easting	Latitude	Longitude	Shape
PBHL	7223.00	42.53	-8161.38	1422483.27	3196959.56	40.4909590	-104.7918530	Point
TOP	7246.00	99.12	-789.07	1422601.17	3204331.12	40.4911180	-104.7653470	Point

SECTION DETAILS									
MD	Inc	Azi	TVD	+N/-S	+E/-W	Dleg	TFace	VSect	Target
0.00	0.00	0.00	0.00	0.00	0.00	0.00	0.00	0.00	
600.00	0.00	0.00	600.00	0.00	0.00	0.00	0.00	0.00	
685.01	1.70	302.00	685.00	0.67	-1.07	2.00	302.00	1.06	
6628.03	1.70	302.00	6625.40	94.11	-150.60	0.00	0.00	149.88	
7614.07	90.18	269.56	7246.00	99.12	-789.07	9.00	-32.45	788.28	
14986.64	90.18	269.56	7223.00	42.53	-8161.38	0.00	0.00	8160.81	PBHL

CASING DETAILS					PROJECT DETAILS: SECTION 15, T6N, R66W	
TVD	MD	Name	Size		Geodetic System: US State Plane 1983 Datum: North American Datum 1983 Ellipsoid: GRS 1980 Zone: Colorado Northern Zone Colorado Northern Zone System Datum: Mean Sea Level	
1750.00	1750.48	9 5/8"	9.625			



# **SRC ENERGY**

**SECTION 15, T6N, R66W  
HARVESTERS STATE 7-15 PAD  
HARVESTERS STATE 5C-16-M**

**OH**

**Plan: PLAN #1**

## **Standard Planning Report**

**02 October, 2017**





<b>Database:</b>	EDM 5000.14 Single User Db	<b>Local Co-ordinate Reference:</b>	Well HARVESTERS STATE 5C-16-
<b>Company:</b>	SRC ENERGY	<b>TVD Reference:</b>	M KB @ 4821.00ft
<b>Project:</b>	SECTION 15, T6N, R66W	<b>MD Reference:</b>	KB @ 4821.00ft
<b>Site:</b>	HARVESTERS STATE 7-15 PAD	<b>North Reference:</b>	True
<b>Well:</b>	HARVESTERS STATE 5C-16-M	<b>Survey Calculation Method:</b>	Minimum Curvature
<b>Wellbore:</b>	OH		
<b>Design:</b>	PLAN #1		

<b>Project</b>	SECTION 15, T6N, R66W		
<b>Map System:</b>	US State Plane 1983	<b>System Datum:</b>	Mean Sea Level
<b>Geo Datum:</b>	North American Datum 1983		
<b>Map Zone:</b>	Colorado Northern Zone		

<b>Site</b>	HARVESTERS STATE 7-15 PAD			
<b>Site Position:</b>		<b>Northing:</b>	1,422,648.53 usft	<b>Latitude:</b> 40.4912300
<b>From:</b>	Lat/Long	<b>Easting:</b>	3,205,120.94 usft	<b>Longitude:</b> -104.7625060
<b>Position Uncertainty:</b>	3.28 ft	<b>Slot Radius:</b>	13.200 in	<b>Grid Convergence:</b> 0.48 °

<b>Well</b>	HARVESTERS STATE 5C-16-M, 1733' FNL & 2334' FEL			
<b>Well Position</b>	<b>+N/-S</b>	-139.91 ft	<b>Northing:</b>	1,422,508.62 usft
	<b>+E/-W</b>	-1.11 ft	<b>Easting:</b>	3,205,120.99 usft
<b>Position Uncertainty</b>		3.28 ft	<b>Wellhead Elevation:</b>	<b>Latitude:</b> 40.4908460
				<b>Longitude:</b> -104.7625100
				<b>Ground Level:</b> 4,801.00 ft

<b>Wellbore</b>	OH				
<b>Magnetics</b>	<b>Model Name</b>	<b>Sample Date</b>	<b>Declination (°)</b>	<b>Dip Angle (°)</b>	<b>Field Strength (nT)</b>
	IGRF2015	9/27/2017	8.19	66.92	52,408

<b>Design</b>	PLAN #1			
<b>Audit Notes:</b>				
<b>Version:</b>	<b>Phase:</b>	PLAN	<b>Tie On Depth:</b>	0.00
<b>Vertical Section:</b>	<b>Depth From (TVD) (ft)</b>	<b>+N/-S (ft)</b>	<b>+E/-W (ft)</b>	<b>Direction (°)</b>
	0.00	0.00	0.00	269.56

<b>Plan Survey Tool Program</b>	<b>Date</b>	10/2/2017		
<b>Depth From (ft)</b>	<b>Depth To (ft)</b>	<b>Survey (Wellbore)</b>	<b>Tool Name</b>	<b>Remarks</b>
1	0.00	14,986.61	PLAN #1 (OH)	MWD+IFR1
				OWSG MWD + IFR1

<b>Plan Sections</b>										
<b>Measured Depth (ft)</b>	<b>Inclination (°)</b>	<b>Azimuth (°)</b>	<b>Vertical Depth (ft)</b>	<b>+N/-S (ft)</b>	<b>+E/-W (ft)</b>	<b>Dogleg Rate (°/100ft)</b>	<b>Build Rate (°/100ft)</b>	<b>Turn Rate (°/100ft)</b>	<b>TFO (°)</b>	<b>Target</b>
0.00	0.00	0.00	0.00	0.00	0.00	0.00	0.00	0.00	0.00	
600.00	0.00	0.00	600.00	0.00	0.00	0.00	0.00	0.00	0.00	
685.01	1.70	302.00	685.00	0.67	-1.07	2.00	2.00	0.00	302.00	
6,628.03	1.70	302.00	6,625.40	94.11	-150.60	0.00	0.00	0.00	0.00	
7,614.07	90.18	269.56	7,246.00	99.12	-789.07	9.00	8.97	-3.29	-32.45	
14,986.64	90.18	269.56	7,223.00	42.53	-8,161.38	0.00	0.00	0.00	0.00	PBHL_HARVESTERS

<b>Database:</b>	EDM 5000.14 Single User Db	<b>Local Co-ordinate Reference:</b>	Well HARVESTERS STATE 5C-16-
<b>Company:</b>	SRC ENERGY	<b>TVD Reference:</b>	M KB @ 4821.00ft
<b>Project:</b>	SECTION 15, T6N, R66W	<b>MD Reference:</b>	KB @ 4821.00ft
<b>Site:</b>	HARVESTERS STATE 7-15 PAD	<b>North Reference:</b>	True
<b>Well:</b>	HARVESTERS STATE 5C-16-M	<b>Survey Calculation Method:</b>	Minimum Curvature
<b>Wellbore:</b>	OH		
<b>Design:</b>	PLAN #1		

Planned Survey									
Measured Depth (ft)	Inclination (°)	Azimuth (°)	Vertical Depth (ft)	+N/-S (ft)	+E/-W (ft)	Vertical Section (ft)	Dogleg Rate (°/100ft)	Build Rate (°/100ft)	Turn Rate (°/100ft)
0.00	0.00	0.00	0.00	0.00	0.00	0.00	0.00	0.00	0.00
100.00	0.00	0.00	100.00	0.00	0.00	0.00	0.00	0.00	0.00
200.00	0.00	0.00	200.00	0.00	0.00	0.00	0.00	0.00	0.00
300.00	0.00	0.00	300.00	0.00	0.00	0.00	0.00	0.00	0.00
400.00	0.00	0.00	400.00	0.00	0.00	0.00	0.00	0.00	0.00
500.00	0.00	0.00	500.00	0.00	0.00	0.00	0.00	0.00	0.00
600.00	0.00	0.00	600.00	0.00	0.00	0.00	0.00	0.00	0.00
<b>Start Build 2.00</b>									
685.01	1.70	302.00	685.00	0.67	-1.07	1.06	2.00	2.00	0.00
<b>Start 5943.02 hold at 685.01 MD</b>									
700.00	1.70	302.00	699.98	0.90	-1.45	1.44	0.00	0.00	0.00
800.00	1.70	302.00	799.94	2.48	-3.96	3.94	0.00	0.00	0.00
900.00	1.70	302.00	899.89	4.05	-6.48	6.45	0.00	0.00	0.00
1,000.00	1.70	302.00	999.85	5.62	-9.00	8.95	0.00	0.00	0.00
1,100.00	1.70	302.00	1,099.80	7.19	-11.51	11.46	0.00	0.00	0.00
1,200.00	1.70	302.00	1,199.76	8.77	-14.03	13.96	0.00	0.00	0.00
1,300.00	1.70	302.00	1,299.72	10.34	-16.54	16.46	0.00	0.00	0.00
1,400.00	1.70	302.00	1,399.67	11.91	-19.06	18.97	0.00	0.00	0.00
1,500.00	1.70	302.00	1,499.63	13.48	-21.58	21.47	0.00	0.00	0.00
1,600.00	1.70	302.00	1,599.58	15.05	-24.09	23.98	0.00	0.00	0.00
1,700.00	1.70	302.00	1,699.54	16.63	-26.61	26.48	0.00	0.00	0.00
1,750.48	1.70	302.00	1,750.00	17.42	-27.88	27.74	0.00	0.00	0.00
<b>9 5/8"</b>									
1,800.00	1.70	302.00	1,799.50	18.20	-29.12	28.98	0.00	0.00	0.00
1,900.00	1.70	302.00	1,899.45	19.77	-31.64	31.49	0.00	0.00	0.00
2,000.00	1.70	302.00	1,999.41	21.34	-34.16	33.99	0.00	0.00	0.00
2,100.00	1.70	302.00	2,099.36	22.92	-36.67	36.50	0.00	0.00	0.00
2,200.00	1.70	302.00	2,199.32	24.49	-39.19	39.00	0.00	0.00	0.00
2,300.00	1.70	302.00	2,299.28	26.06	-41.70	41.50	0.00	0.00	0.00
2,400.00	1.70	302.00	2,399.23	27.63	-44.22	44.01	0.00	0.00	0.00
2,500.00	1.70	302.00	2,499.19	29.20	-46.74	46.51	0.00	0.00	0.00
2,600.00	1.70	302.00	2,599.14	30.78	-49.25	49.02	0.00	0.00	0.00
2,700.00	1.70	302.00	2,699.10	32.35	-51.77	51.52	0.00	0.00	0.00
2,800.00	1.70	302.00	2,799.06	33.92	-54.29	54.02	0.00	0.00	0.00
2,900.00	1.70	302.00	2,899.01	35.49	-56.80	56.53	0.00	0.00	0.00
3,000.00	1.70	302.00	2,998.97	37.07	-59.32	59.03	0.00	0.00	0.00
3,100.00	1.70	302.00	3,098.92	38.64	-61.83	61.54	0.00	0.00	0.00
3,200.00	1.70	302.00	3,198.88	40.21	-64.35	64.04	0.00	0.00	0.00
3,300.00	1.70	302.00	3,298.84	41.78	-66.87	66.54	0.00	0.00	0.00
3,400.00	1.70	302.00	3,398.79	43.35	-69.38	69.05	0.00	0.00	0.00
3,500.00	1.70	302.00	3,498.75	44.93	-71.90	71.55	0.00	0.00	0.00
3,600.00	1.70	302.00	3,598.70	46.50	-74.41	74.06	0.00	0.00	0.00
3,700.00	1.70	302.00	3,698.66	48.07	-76.93	76.56	0.00	0.00	0.00
3,800.00	1.70	302.00	3,798.62	49.64	-79.45	79.06	0.00	0.00	0.00
3,900.00	1.70	302.00	3,898.57	51.22	-81.96	81.57	0.00	0.00	0.00
4,000.00	1.70	302.00	3,998.53	52.79	-84.48	84.07	0.00	0.00	0.00
4,100.00	1.70	302.00	4,098.48	54.36	-87.00	86.58	0.00	0.00	0.00
4,200.00	1.70	302.00	4,198.44	55.93	-89.51	89.08	0.00	0.00	0.00
4,300.00	1.70	302.00	4,298.40	57.51	-92.03	91.58	0.00	0.00	0.00
4,400.00	1.70	302.00	4,398.35	59.08	-94.54	94.09	0.00	0.00	0.00
4,500.00	1.70	302.00	4,498.31	60.65	-97.06	96.59	0.00	0.00	0.00
4,600.00	1.70	302.00	4,598.26	62.22	-99.58	99.10	0.00	0.00	0.00
4,700.00	1.70	302.00	4,698.22	63.79	-102.09	101.60	0.00	0.00	0.00

<b>Database:</b>	EDM 5000.14 Single User Db	<b>Local Co-ordinate Reference:</b>	Well HARVESTERS STATE 5C-16-
<b>Company:</b>	SRC ENERGY	<b>TVD Reference:</b>	M KB @ 4821.00ft
<b>Project:</b>	SECTION 15, T6N, R66W	<b>MD Reference:</b>	KB @ 4821.00ft
<b>Site:</b>	HARVESTERS STATE 7-15 PAD	<b>North Reference:</b>	True
<b>Well:</b>	HARVESTERS STATE 5C-16-M	<b>Survey Calculation Method:</b>	Minimum Curvature
<b>Wellbore:</b>	OH		
<b>Design:</b>	PLAN #1		

Planned Survey									
Measured Depth (ft)	Inclination (°)	Azimuth (°)	Vertical Depth (ft)	+N/-S (ft)	+E/-W (ft)	Vertical Section (ft)	Dogleg Rate (°/100ft)	Build Rate (°/100ft)	Turn Rate (°/100ft)
4,800.00	1.70	302.00	4,798.18	65.37	-104.61	104.10	0.00	0.00	0.00
4,900.00	1.70	302.00	4,898.13	66.94	-107.12	106.61	0.00	0.00	0.00
5,000.00	1.70	302.00	4,998.09	68.51	-109.64	109.11	0.00	0.00	0.00
5,100.00	1.70	302.00	5,098.04	70.08	-112.16	111.62	0.00	0.00	0.00
5,200.00	1.70	302.00	5,198.00	71.66	-114.67	114.12	0.00	0.00	0.00
5,300.00	1.70	302.00	5,297.96	73.23	-117.19	116.62	0.00	0.00	0.00
5,400.00	1.70	302.00	5,397.91	74.80	-119.71	119.13	0.00	0.00	0.00
5,500.00	1.70	302.00	5,497.87	76.37	-122.22	121.63	0.00	0.00	0.00
5,600.00	1.70	302.00	5,597.82	77.94	-124.74	124.14	0.00	0.00	0.00
5,700.00	1.70	302.00	5,697.78	79.52	-127.25	126.64	0.00	0.00	0.00
5,800.00	1.70	302.00	5,797.74	81.09	-129.77	129.14	0.00	0.00	0.00
5,900.00	1.70	302.00	5,897.69	82.66	-132.29	131.65	0.00	0.00	0.00
6,000.00	1.70	302.00	5,997.65	84.23	-134.80	134.15	0.00	0.00	0.00
6,100.00	1.70	302.00	6,097.60	85.81	-137.32	136.66	0.00	0.00	0.00
6,200.00	1.70	302.00	6,197.56	87.38	-139.83	139.16	0.00	0.00	0.00
6,300.00	1.70	302.00	6,297.52	88.95	-142.35	141.66	0.00	0.00	0.00
6,400.00	1.70	302.00	6,397.47	90.52	-144.87	144.17	0.00	0.00	0.00
6,500.00	1.70	302.00	6,497.43	92.09	-147.38	146.67	0.00	0.00	0.00
6,600.00	1.70	302.00	6,597.38	93.67	-149.90	149.18	0.00	0.00	0.00
6,628.03	1.70	302.00	6,625.40	94.11	-150.60	149.88	0.00	0.00	0.00
Start DLS 9.00 TFO -32.45									
6,700.00	7.96	276.10	6,697.08	95.20	-156.47	155.74	9.00	8.70	-35.99
6,800.00	16.94	272.56	6,794.63	96.59	-177.96	177.21	9.00	8.97	-3.54
6,900.00	25.93	271.44	6,887.62	97.80	-214.44	213.68	9.00	8.99	-1.12
7,000.00	34.92	270.87	6,973.77	98.78	-265.02	264.25	9.00	9.00	-0.57
7,100.00	43.92	270.51	7,050.94	99.53	-328.45	327.67	9.00	9.00	-0.36
7,200.00	52.92	270.25	7,117.24	100.01	-403.17	402.39	9.00	9.00	-0.26
7,300.00	61.92	270.05	7,171.03	100.23	-487.35	486.56	9.00	9.00	-0.20
7,400.00	70.91	269.88	7,211.00	100.17	-578.90	578.11	9.00	9.00	-0.17
7,500.00	79.91	269.73	7,236.16	99.83	-675.58	674.79	9.00	9.00	-0.15
7,600.00	88.91	269.58	7,245.89	99.22	-775.00	774.21	9.00	9.00	-0.14
7,614.07	90.18	269.56	7,246.00	99.12	-789.07	788.28	9.00	9.00	-0.14
Start 7372.57 hold at 7614.07 MD									
7,614.08	90.18	269.56	7,246.00	99.12	-789.07	788.29	0.00	0.00	0.00
TOP_HARVESTERS STATE 5C-16-M(1637 FNL 2219 FWL)									
7,700.00	90.18	269.56	7,245.73	98.46	-874.99	874.21	0.00	0.00	0.00
7,800.00	90.18	269.56	7,245.42	97.69	-974.99	974.21	0.00	0.00	0.00
7,900.00	90.18	269.56	7,245.10	96.92	-1,074.99	1,074.21	0.00	0.00	0.00
8,000.00	90.18	269.56	7,244.79	96.16	-1,174.98	1,174.21	0.00	0.00	0.00
8,100.00	90.18	269.56	7,244.48	95.39	-1,274.98	1,274.21	0.00	0.00	0.00
8,200.00	90.18	269.56	7,244.17	94.62	-1,374.98	1,374.21	0.00	0.00	0.00
8,300.00	90.18	269.56	7,243.86	93.85	-1,474.97	1,474.21	0.00	0.00	0.00
8,400.00	90.18	269.56	7,243.55	93.09	-1,574.97	1,574.21	0.00	0.00	0.00
8,500.00	90.18	269.56	7,243.23	92.32	-1,674.96	1,674.21	0.00	0.00	0.00
8,600.00	90.18	269.56	7,242.92	91.55	-1,774.96	1,774.21	0.00	0.00	0.00
8,700.00	90.18	269.56	7,242.61	90.78	-1,874.96	1,874.21	0.00	0.00	0.00
8,800.00	90.18	269.56	7,242.30	90.02	-1,974.95	1,974.21	0.00	0.00	0.00
8,900.00	90.18	269.56	7,241.99	89.25	-2,074.95	2,074.20	0.00	0.00	0.00
9,000.00	90.18	269.56	7,241.67	88.48	-2,174.95	2,174.20	0.00	0.00	0.00
9,100.00	90.18	269.56	7,241.36	87.71	-2,274.94	2,274.20	0.00	0.00	0.00
9,200.00	90.18	269.56	7,241.05	86.95	-2,374.94	2,374.20	0.00	0.00	0.00
9,300.00	90.18	269.56	7,240.74	86.18	-2,474.94	2,474.20	0.00	0.00	0.00
9,400.00	90.18	269.56	7,240.43	85.41	-2,574.93	2,574.20	0.00	0.00	0.00

<b>Database:</b>	EDM 5000.14 Single User Db	<b>Local Co-ordinate Reference:</b>	Well HARVESTER STATE 5C-16-M
<b>Company:</b>	SRC ENERGY	<b>TVD Reference:</b>	KB @ 4821.00ft
<b>Project:</b>	SECTION 15, T6N, R66W	<b>MD Reference:</b>	KB @ 4821.00ft
<b>Site:</b>	HARVESTERS STATE 7-15 PAD	<b>North Reference:</b>	True
<b>Well:</b>	HARVESTERS STATE 5C-16-M	<b>Survey Calculation Method:</b>	Minimum Curvature
<b>Wellbore:</b>	OH		
<b>Design:</b>	PLAN #1		

Planned Survey									
Measured Depth (ft)	Inclination (°)	Azimuth (°)	Vertical Depth (ft)	+N/-S (ft)	+E/-W (ft)	Vertical Section (ft)	Dogleg Rate (°/100ft)	Build Rate (°/100ft)	Turn Rate (°/100ft)
9,500.00	90.18	269.56	7,240.11	84.64	-2,674.93	2,674.20	0.00	0.00	0.00
9,600.00	90.18	269.56	7,239.80	83.88	-2,774.93	2,774.20	0.00	0.00	0.00
9,700.00	90.18	269.56	7,239.49	83.11	-2,874.92	2,874.20	0.00	0.00	0.00
9,800.00	90.18	269.56	7,239.18	82.34	-2,974.92	2,974.20	0.00	0.00	0.00
9,900.00	90.18	269.56	7,238.87	81.57	-3,074.92	3,074.20	0.00	0.00	0.00
10,000.00	90.18	269.56	7,238.55	80.81	-3,174.91	3,174.20	0.00	0.00	0.00
10,100.00	90.18	269.56	7,238.24	80.04	-3,274.91	3,274.20	0.00	0.00	0.00
10,200.00	90.18	269.56	7,237.93	79.27	-3,374.91	3,374.20	0.00	0.00	0.00
10,300.00	90.18	269.56	7,237.62	78.50	-3,474.90	3,474.20	0.00	0.00	0.00
10,400.00	90.18	269.56	7,237.31	77.74	-3,574.90	3,574.20	0.00	0.00	0.00
10,500.00	90.18	269.56	7,236.99	76.97	-3,674.90	3,674.20	0.00	0.00	0.00
10,600.00	90.18	269.56	7,236.68	76.20	-3,774.89	3,774.20	0.00	0.00	0.00
10,700.00	90.18	269.56	7,236.37	75.43	-3,874.89	3,874.20	0.00	0.00	0.00
10,800.00	90.18	269.56	7,236.06	74.66	-3,974.89	3,974.20	0.00	0.00	0.00
10,900.00	90.18	269.56	7,235.75	73.90	-4,074.88	4,074.20	0.00	0.00	0.00
11,000.00	90.18	269.56	7,235.44	73.13	-4,174.88	4,174.19	0.00	0.00	0.00
11,100.00	90.18	269.56	7,235.12	72.36	-4,274.88	4,274.19	0.00	0.00	0.00
11,200.00	90.18	269.56	7,234.81	71.59	-4,374.87	4,374.19	0.00	0.00	0.00
11,300.00	90.18	269.56	7,234.50	70.83	-4,474.87	4,474.19	0.00	0.00	0.00
11,400.00	90.18	269.56	7,234.19	70.06	-4,574.87	4,574.19	0.00	0.00	0.00
11,500.00	90.18	269.56	7,233.88	69.29	-4,674.86	4,674.19	0.00	0.00	0.00
11,600.00	90.18	269.56	7,233.56	68.52	-4,774.86	4,774.19	0.00	0.00	0.00
11,700.00	90.18	269.56	7,233.25	67.76	-4,874.86	4,874.19	0.00	0.00	0.00
11,800.00	90.18	269.56	7,232.94	66.99	-4,974.85	4,974.19	0.00	0.00	0.00
11,900.00	90.18	269.56	7,232.63	66.22	-5,074.85	5,074.19	0.00	0.00	0.00
12,000.00	90.18	269.56	7,232.32	65.45	-5,174.84	5,174.19	0.00	0.00	0.00
12,100.00	90.18	269.56	7,232.00	64.69	-5,274.84	5,274.19	0.00	0.00	0.00
12,200.00	90.18	269.56	7,231.69	63.92	-5,374.84	5,374.19	0.00	0.00	0.00
12,300.00	90.18	269.56	7,231.38	63.15	-5,474.83	5,474.19	0.00	0.00	0.00
12,400.00	90.18	269.56	7,231.07	62.38	-5,574.83	5,574.19	0.00	0.00	0.00
12,500.00	90.18	269.56	7,230.76	61.62	-5,674.83	5,674.19	0.00	0.00	0.00
12,600.00	90.18	269.56	7,230.44	60.85	-5,774.82	5,774.19	0.00	0.00	0.00
12,700.00	90.18	269.56	7,230.13	60.08	-5,874.82	5,874.19	0.00	0.00	0.00
12,800.00	90.18	269.56	7,229.82	59.31	-5,974.82	5,974.19	0.00	0.00	0.00
12,900.00	90.18	269.56	7,229.51	58.55	-6,074.81	6,074.19	0.00	0.00	0.00
13,000.00	90.18	269.56	7,229.20	57.78	-6,174.81	6,174.19	0.00	0.00	0.00
13,100.00	90.18	269.56	7,228.88	57.01	-6,274.81	6,274.18	0.00	0.00	0.00
13,200.00	90.18	269.56	7,228.57	56.24	-6,374.80	6,374.18	0.00	0.00	0.00
13,300.00	90.18	269.56	7,228.26	55.48	-6,474.80	6,474.18	0.00	0.00	0.00
13,400.00	90.18	269.56	7,227.95	54.71	-6,574.80	6,574.18	0.00	0.00	0.00
13,500.00	90.18	269.56	7,227.64	53.94	-6,674.79	6,674.18	0.00	0.00	0.00
13,600.00	90.18	269.56	7,227.33	53.17	-6,774.79	6,774.18	0.00	0.00	0.00
13,700.00	90.18	269.56	7,227.01	52.40	-6,874.79	6,874.18	0.00	0.00	0.00
13,800.00	90.18	269.56	7,226.70	51.64	-6,974.78	6,974.18	0.00	0.00	0.00
13,900.00	90.18	269.56	7,226.39	50.87	-7,074.78	7,074.18	0.00	0.00	0.00
14,000.00	90.18	269.56	7,226.08	50.10	-7,174.78	7,174.18	0.00	0.00	0.00
14,100.00	90.18	269.56	7,225.77	49.33	-7,274.77	7,274.18	0.00	0.00	0.00
14,200.00	90.18	269.56	7,225.45	48.57	-7,374.77	7,374.18	0.00	0.00	0.00
14,300.00	90.18	269.56	7,225.14	47.80	-7,474.77	7,474.18	0.00	0.00	0.00
14,400.00	90.18	269.56	7,224.83	47.03	-7,574.76	7,574.18	0.00	0.00	0.00
14,500.00	90.18	269.56	7,224.52	46.26	-7,674.76	7,674.18	0.00	0.00	0.00
14,600.00	90.18	269.56	7,224.21	45.50	-7,774.76	7,774.18	0.00	0.00	0.00
14,700.00	90.18	269.56	7,223.89	44.73	-7,874.75	7,874.18	0.00	0.00	0.00
14,800.00	90.18	269.56	7,223.58	43.96	-7,974.75	7,974.18	0.00	0.00	0.00

<b>Database:</b>	EDM 5000.14 Single User Db	<b>Local Co-ordinate Reference:</b>	Well HARVESTERS STATE 5C-16-
<b>Company:</b>	SRC ENERGY	<b>TVD Reference:</b>	M KB @ 4821.00ft
<b>Project:</b>	SECTION 15, T6N, R66W	<b>MD Reference:</b>	KB @ 4821.00ft
<b>Site:</b>	HARVESTERS STATE 7-15 PAD	<b>North Reference:</b>	True
<b>Well:</b>	HARVESTERS STATE 5C-16-M	<b>Survey Calculation Method:</b>	Minimum Curvature
<b>Wellbore:</b>	OH		
<b>Design:</b>	PLAN #1		

Planned Survey									
Measured Depth (ft)	Inclination (°)	Azimuth (°)	Vertical Depth (ft)	+N/-S (ft)	+E/-W (ft)	Vertical Section (ft)	Dogleg Rate (°/100ft)	Build Rate (°/100ft)	Turn Rate (°/100ft)
14,900.00	90.18	269.56	7,223.27	43.19	-8,074.75	8,074.18	0.00	0.00	0.00
14,986.64	90.18	269.56	7,223.00	42.53	-8,161.38	8,160.81	0.00	0.00	0.00
TD at 14986.64 - PBHL_HARVESTERS STATE 5C-16-M(1623 FNL 159 FWL)									

Design Targets									
Target Name	Dip Angle (°)	Dip Dir. (°)	TVD (ft)	+N/-S (ft)	+E/-W (ft)	Northing (usft)	Easting (usft)	Latitude	Longitude
- hit/miss target									
- Shape									
PBHL_HARVESTERS S	0.00	0.00	7,223.00	42.53	-8,161.38	1,422,483.27	3,196,959.56	40.4909590	-104.7918530
- plan hits target center									
- Point									
TOP_HARVESTERS ST	0.00	0.00	7,246.00	99.12	-789.07	1,422,601.17	3,204,331.12	40.4911180	-104.7653470
- plan hits target center									
- Point									

Casing Points					
Measured Depth (ft)	Vertical Depth (ft)	Name	Casing Diameter (in)	Hole Diameter (in)	
1,750.48	1,750.00	9 5/8"	9.625	13.500	

Plan Annotations				
Measured Depth (ft)	Vertical Depth (ft)	Local Coordinates		Comment
		+N/-S (ft)	+E/-W (ft)	
600.00	600.00	0.00	0.00	Start Build 2.00
685.01	685.00	0.67	-1.07	Start 5943.02 hold at 685.01 MD
6,628.03	6,625.40	94.11	-150.60	Start DLS 9.00 TFO -32.45
7,614.07	7,246.00	99.12	-789.07	Start 7372.57 hold at 7614.07 MD
14,986.64	7,223.00	42.53	-8,161.38	TD at 14986.64