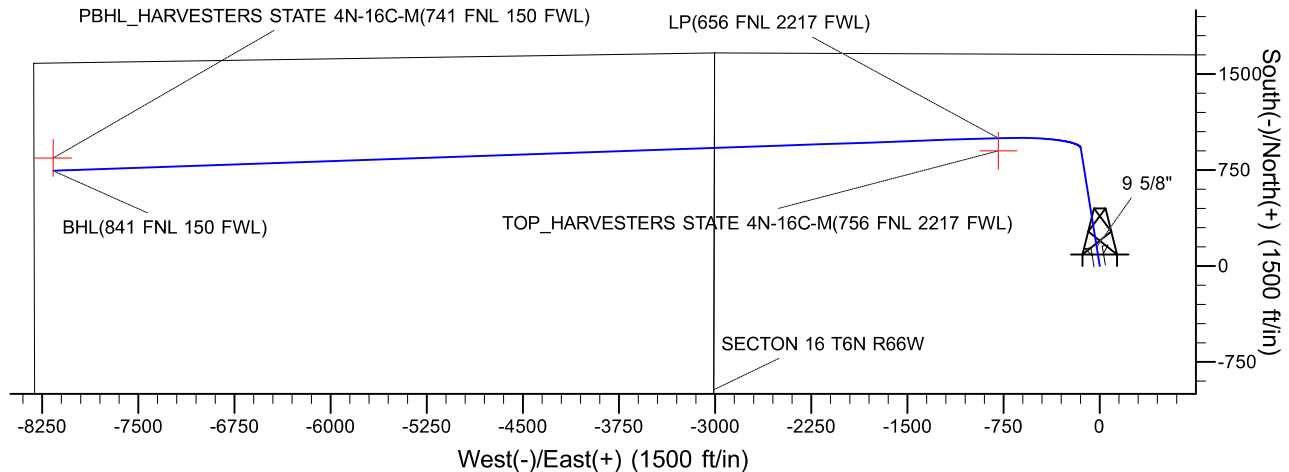
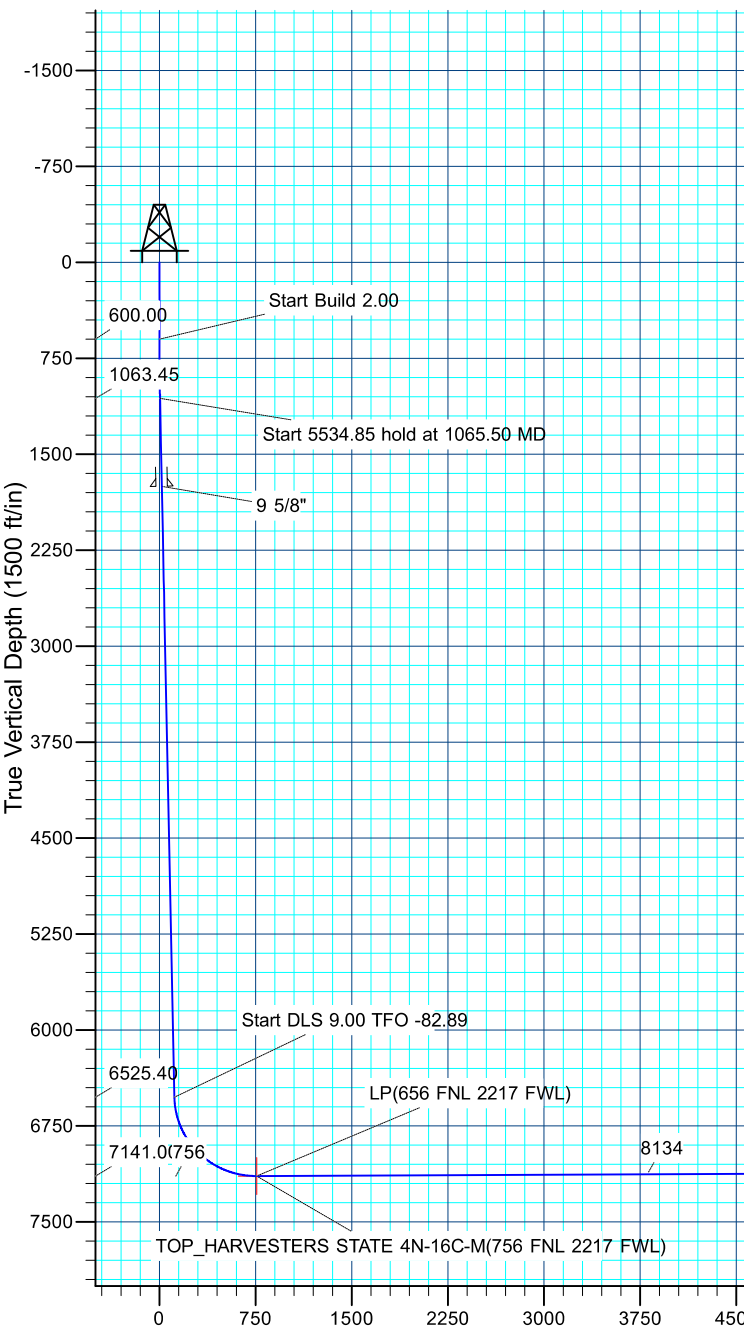
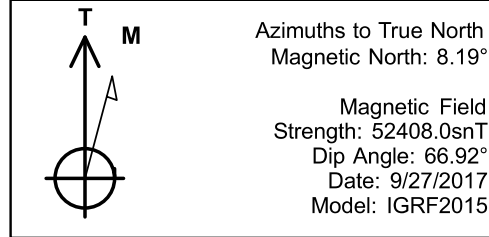




Project: SECTION 15, T6N, R66W
Site: HARVESTERS STATE 7-15 PAD
Well: HARVESTERS STATE 4N-16C-M
Wellbore: OH
Design: PLAN #1
Lat: 40.4910660
Long: -104.7625080



DESIGN TARGET DETAILS									
Name	TVD	+N/-S	+E/-W	Northing	Easting	Latitude	Longitude	Shape	
PBHL	7109.00	844.36	-8164.15	1423365.20	3196950.01	40.4933800	-104.7918620	Point	
TOP	- plan misses target center by 99.94ft at 14964.70ft MD (7109.02 TVD, 744.48 N, -8160.69 E)								
	7141.00	899.85	-790.16	1423482.02	3204323.27	40.4935360	-104.7653490	Point	
	- plan misses target center by 99.77ft at 7593.14ft MD (7140.99 TVD, 999.56 N, -793.61 E)								
SECTION DETAILS									
MD	Inc	Azi	TVD	+N/-S	+E/-W	Dleg	TFace	VSect	Target
0.00	0.00	0.00	0.00	0.00	0.00	0.00	0.00	0.00	
600.00	0.00	0.00	600.00	0.00	0.00	0.00	0.00	0.00	
1065.50	9.31	350.85	1063.45	37.26	-6.00	2.00	350.85	4.71	
6600.35	9.31	350.85	6525.40	921.27	-148.39	0.00	0.00	116.42	
7590.23	90.25	268.02	7141.00	999.66	-790.70	9.00	-82.89	755.63	
14968.16	90.25	268.02	7109.00	744.36	-8164.15	0.00	0.00	8133.50	
CASING DETAILS					PROJECT DETAILS: SECTION 15, T6N, R66W				
TVD	MD	Name	Size	Geodetic System: US State Plane 1983 Datum: North American Datum 1983 Ellipsoid: GRS 1980 Zone: Colorado Northern Zone Colorado Northern Zone System Datum: Mean Sea Level					
1750.00	1761.21	9 5/8"	9.625						
S STATE 4N-16C-M(741 FNL 150 FWL)									

Vertical Section at 268.02° (1500 ft/in)



SRC ENERGY

SECTION 15, T6N, R66W

HARVESTERS STATE 7-15 PAD

HARVESTERS STATE 4N-16C-M

OH

Plan: PLAN #1

Standard Planning Report

02 October, 2017





Database:	EDM 5000.14 Single User Db	Local Co-ordinate Reference:	Well HARVESTERS STATE 4N-16C-M
Company:	SRC ENERGY	TVD Reference:	KB @ 4821.00ft
Project:	SECTION 15, T6N, R66W	MD Reference:	KB @ 4821.00ft
Site:	HARVESTERS STATE 7-15 PAD	North Reference:	True
Well:	HARVESTERS STATE 4N-16C-M	Survey Calculation Method:	Minimum Curvature
Wellbore:	OH		
Design:	PLAN #1		

Project	SECTION 15, T6N, R66W		
Map System:	US State Plane 1983	System Datum:	Mean Sea Level
Geo Datum:	North American Datum 1983		
Map Zone:	Colorado Northern Zone		

Site	HARVESTERS STATE 7-15 PAD			
Site Position:		Northing:	1,422,648.53 usft	Latitude: 40.4912300
From:	Lat/Long	Easting:	3,205,120.94 usft	Longitude: -104.7625060
Position Uncertainty:	3.28 ft	Slot Radius:	13.200 in	Grid Convergence: 0.48 °

Well	HARVESTERS STATE 4N-16C-M, 1653' FNL & 2333' FEL			
Well Position	+N/-S	-59.75 ft	Northing:	1,422,588.77 usft
	+E/-W	-0.56 ft	Easting:	3,205,120.88 usft
Position Uncertainty		3.28 ft	Wellhead Elevation:	Ground Level: 4,801.00 ft

Wellbore	OH				
Magnetics	Model Name	Sample Date	Declination (°)	Dip Angle (°)	Field Strength (nT)
	IGRF2015	9/27/2017	8.19	66.92	52,408

Design	PLAN #1			
Audit Notes:				
Version:	Phase:	PLAN	Tie On Depth:	0.00
Vertical Section:	Depth From (TVD) (ft)	+N/-S (ft)	+E/-W (ft)	Direction (°)
	0.00	0.00	0.00	268.02

Plan Survey Tool Program	Date	10/2/2017		
Depth From (ft)	Depth To (ft)	Survey (Wellbore)	Tool Name	Remarks
1	0.00	14,968.16	PLAN #1 (OH)	MWD+IFR1 OWSG MWD + IFR1

Plan Sections										
Measured Depth (ft)	Inclination (°)	Azimuth (°)	Vertical Depth (ft)	+N/-S (ft)	+E/-W (ft)	Dogleg Rate (°/100ft)	Build Rate (°/100ft)	Turn Rate (°/100ft)	TFO (°)	Target
0.00	0.00	0.00	0.00	0.00	0.00	0.00	0.00	0.00	0.00	
600.00	0.00	0.00	600.00	0.00	0.00	0.00	0.00	0.00	0.00	
1,065.50	9.31	350.85	1,063.45	37.26	-6.00	2.00	2.00	0.00	350.85	
6,600.35	9.31	350.85	6,525.40	921.27	-148.39	0.00	0.00	0.00	0.00	
7,590.23	90.25	268.02	7,141.00	999.66	-790.70	9.00	8.18	-8.37	-82.89	
14,968.16	90.25	268.02	7,109.00	744.36	-8,164.15	0.00	0.00	0.00	0.00	

Database:	EDM 5000.14 Single User Db	Local Co-ordinate Reference:	Well HARVESTERS STATE 4N-16C-M
Company:	SRC ENERGY	TVD Reference:	KB @ 4821.00ft
Project:	SECTION 15, T6N, R66W	MD Reference:	KB @ 4821.00ft
Site:	HARVESTERS STATE 7-15 PAD	North Reference:	True
Well:	HARVESTERS STATE 4N-16C-M	Survey Calculation Method:	Minimum Curvature
Wellbore:	OH		
Design:	PLAN #1		

Planned Survey									
Measured Depth (ft)	Inclination (°)	Azimuth (°)	Vertical Depth (ft)	+N/-S (ft)	+E/-W (ft)	Vertical Section (ft)	Dogleg Rate (°/100ft)	Build Rate (°/100ft)	Turn Rate (°/100ft)
0.00	0.00	0.00	0.00	0.00	0.00	0.00	0.00	0.00	0.00
100.00	0.00	0.00	100.00	0.00	0.00	0.00	0.00	0.00	0.00
200.00	0.00	0.00	200.00	0.00	0.00	0.00	0.00	0.00	0.00
300.00	0.00	0.00	300.00	0.00	0.00	0.00	0.00	0.00	0.00
400.00	0.00	0.00	400.00	0.00	0.00	0.00	0.00	0.00	0.00
500.00	0.00	0.00	500.00	0.00	0.00	0.00	0.00	0.00	0.00
600.00	0.00	0.00	600.00	0.00	0.00	0.00	0.00	0.00	0.00
Start Build 2.00									
700.00	2.00	350.85	699.98	1.72	-0.28	0.22	2.00	2.00	0.00
800.00	4.00	350.85	799.84	6.89	-1.11	0.87	2.00	2.00	0.00
900.00	6.00	350.85	899.45	15.49	-2.50	1.96	2.00	2.00	0.00
1,000.00	8.00	350.85	998.70	27.53	-4.43	3.48	2.00	2.00	0.00
1,065.50	9.31	350.85	1,063.45	37.26	-6.00	4.71	2.00	2.00	0.00
Start 5534.85 hold at 1065.50 MD									
1,100.00	9.31	350.85	1,097.50	42.77	-6.89	5.40	0.00	0.00	0.00
1,200.00	9.31	350.85	1,196.18	58.74	-9.46	7.42	0.00	0.00	0.00
1,300.00	9.31	350.85	1,294.87	74.71	-12.03	9.44	0.00	0.00	0.00
1,400.00	9.31	350.85	1,393.55	90.68	-14.61	11.46	0.00	0.00	0.00
1,500.00	9.31	350.85	1,492.23	106.65	-17.18	13.48	0.00	0.00	0.00
1,600.00	9.31	350.85	1,590.91	122.63	-19.75	15.50	0.00	0.00	0.00
1,700.00	9.31	350.85	1,689.60	138.60	-22.32	17.51	0.00	0.00	0.00
1,761.21	9.31	350.85	1,750.00	148.37	-23.90	18.75	0.00	0.00	0.00
9 5/8"									
1,800.00	9.31	350.85	1,788.28	154.57	-24.90	19.53	0.00	0.00	0.00
1,900.00	9.31	350.85	1,886.96	170.54	-27.47	21.55	0.00	0.00	0.00
2,000.00	9.31	350.85	1,985.64	186.51	-30.04	23.57	0.00	0.00	0.00
2,100.00	9.31	350.85	2,084.33	202.48	-32.61	25.59	0.00	0.00	0.00
2,200.00	9.31	350.85	2,183.01	218.46	-35.19	27.61	0.00	0.00	0.00
2,300.00	9.31	350.85	2,281.69	234.43	-37.76	29.62	0.00	0.00	0.00
2,400.00	9.31	350.85	2,380.38	250.40	-40.33	31.64	0.00	0.00	0.00
2,500.00	9.31	350.85	2,479.06	266.37	-42.90	33.66	0.00	0.00	0.00
2,600.00	9.31	350.85	2,577.74	282.34	-45.48	35.68	0.00	0.00	0.00
2,700.00	9.31	350.85	2,676.42	298.31	-48.05	37.70	0.00	0.00	0.00
2,800.00	9.31	350.85	2,775.11	314.29	-50.62	39.72	0.00	0.00	0.00
2,900.00	9.31	350.85	2,873.79	330.26	-53.19	41.73	0.00	0.00	0.00
3,000.00	9.31	350.85	2,972.47	346.23	-55.77	43.75	0.00	0.00	0.00
3,100.00	9.31	350.85	3,071.15	362.20	-58.34	45.77	0.00	0.00	0.00
3,200.00	9.31	350.85	3,169.84	378.17	-60.91	47.79	0.00	0.00	0.00
3,300.00	9.31	350.85	3,268.52	394.15	-63.48	49.81	0.00	0.00	0.00
3,400.00	9.31	350.85	3,367.20	410.12	-66.06	51.83	0.00	0.00	0.00
3,500.00	9.31	350.85	3,465.89	426.09	-68.63	53.84	0.00	0.00	0.00
3,600.00	9.31	350.85	3,564.57	442.06	-71.20	55.86	0.00	0.00	0.00
3,700.00	9.31	350.85	3,663.25	458.03	-73.77	57.88	0.00	0.00	0.00
3,800.00	9.31	350.85	3,761.93	474.00	-76.35	59.90	0.00	0.00	0.00
3,900.00	9.31	350.85	3,860.62	489.98	-78.92	61.92	0.00	0.00	0.00
4,000.00	9.31	350.85	3,959.30	505.95	-81.49	63.94	0.00	0.00	0.00
4,100.00	9.31	350.85	4,057.98	521.92	-84.07	65.95	0.00	0.00	0.00
4,200.00	9.31	350.85	4,156.67	537.89	-86.64	67.97	0.00	0.00	0.00
4,300.00	9.31	350.85	4,255.35	553.86	-89.21	69.99	0.00	0.00	0.00
4,400.00	9.31	350.85	4,354.03	569.83	-91.78	72.01	0.00	0.00	0.00
4,500.00	9.31	350.85	4,452.71	585.81	-94.36	74.03	0.00	0.00	0.00
4,600.00	9.31	350.85	4,551.40	601.78	-96.93	76.05	0.00	0.00	0.00
4,700.00	9.31	350.85	4,650.08	617.75	-99.50	78.06	0.00	0.00	0.00

Database:	EDM 5000.14 Single User Db	Local Co-ordinate Reference:	Well HARVESTERS STATE 4N-16C-M
Company:	SRC ENERGY	TVD Reference:	KB @ 4821.00ft
Project:	SECTION 15, T6N, R66W	MD Reference:	KB @ 4821.00ft
Site:	HARVESTERS STATE 7-15 PAD	North Reference:	True
Well:	HARVESTERS STATE 4N-16C-M	Survey Calculation Method:	Minimum Curvature
Wellbore:	OH		
Design:	PLAN #1		

Planned Survey									
Measured Depth (ft)	Inclination (°)	Azimuth (°)	Vertical Depth (ft)	+N/-S (ft)	+E/-W (ft)	Vertical Section (ft)	Dogleg Rate (°/100ft)	Build Rate (°/100ft)	Turn Rate (°/100ft)
4,800.00	9.31	350.85	4,748.76	633.72	-102.07	80.08	0.00	0.00	0.00
4,900.00	9.31	350.85	4,847.44	649.69	-104.65	82.10	0.00	0.00	0.00
5,000.00	9.31	350.85	4,946.13	665.66	-107.22	84.12	0.00	0.00	0.00
5,100.00	9.31	350.85	5,044.81	681.64	-109.79	86.14	0.00	0.00	0.00
5,200.00	9.31	350.85	5,143.49	697.61	-112.36	88.16	0.00	0.00	0.00
5,300.00	9.31	350.85	5,242.18	713.58	-114.94	90.17	0.00	0.00	0.00
5,400.00	9.31	350.85	5,340.86	729.55	-117.51	92.19	0.00	0.00	0.00
5,500.00	9.31	350.85	5,439.54	745.52	-120.08	94.21	0.00	0.00	0.00
5,600.00	9.31	350.85	5,538.22	761.50	-122.65	96.23	0.00	0.00	0.00
5,700.00	9.31	350.85	5,636.91	777.47	-125.23	98.25	0.00	0.00	0.00
5,800.00	9.31	350.85	5,735.59	793.44	-127.80	100.27	0.00	0.00	0.00
5,900.00	9.31	350.85	5,834.27	809.41	-130.37	102.28	0.00	0.00	0.00
6,000.00	9.31	350.85	5,932.95	825.38	-132.94	104.30	0.00	0.00	0.00
6,100.00	9.31	350.85	6,031.64	841.35	-135.52	106.32	0.00	0.00	0.00
6,200.00	9.31	350.85	6,130.32	857.33	-138.09	108.34	0.00	0.00	0.00
6,300.00	9.31	350.85	6,229.00	873.30	-140.66	110.36	0.00	0.00	0.00
6,400.00	9.31	350.85	6,327.69	889.27	-143.23	112.38	0.00	0.00	0.00
6,500.00	9.31	350.85	6,426.37	905.24	-145.81	114.39	0.00	0.00	0.00
6,600.00	9.31	350.85	6,525.05	921.21	-148.38	116.41	0.00	0.00	0.00
6,600.35	9.31	350.85	6,525.40	921.27	-148.39	116.42	0.00	0.00	0.00
Start DLS 9.00 TFO -82.89									
6,700.00	13.68	309.99	6,623.18	936.83	-158.72	126.20	9.00	4.38	-41.00
6,800.00	21.17	292.89	6,718.58	951.48	-184.46	151.43	9.00	7.49	-17.10
6,900.00	29.49	284.77	6,808.91	964.81	-224.98	191.46	9.00	8.32	-8.12
7,000.00	38.10	280.03	6,891.95	976.48	-279.27	245.32	9.00	8.61	-4.74
7,100.00	46.84	276.83	6,965.65	986.21	-346.01	311.67	9.00	8.74	-3.20
7,200.00	55.65	274.44	7,028.20	993.76	-423.54	388.89	9.00	8.81	-2.39
7,300.00	64.49	272.51	7,078.04	998.94	-509.95	475.08	9.00	8.84	-1.93
7,400.00	73.36	270.84	7,113.97	1,001.63	-603.13	568.10	9.00	8.87	-1.66
7,500.00	82.23	269.33	7,135.09	1,001.75	-700.77	665.68	9.00	8.88	-1.52
7,590.23	90.25	268.02	7,141.00	999.66	-790.70	755.63	9.00	8.88	-1.45
LP(656 FNL 2217 FWL)									
7,593.14	90.25	268.02	7,140.99	999.56	-793.61	758.55	0.00	0.00	0.00
TOP_HARVESTERS STATE 4N-16C-M(756 FNL 2217 FWL)									
7,600.00	90.25	268.02	7,140.96	999.32	-800.47	765.41	0.00	0.00	0.00
7,700.00	90.25	268.02	7,140.53	995.86	-900.41	865.40	0.00	0.00	0.00
7,800.00	90.25	268.02	7,140.09	992.40	-1,000.34	965.40	0.00	0.00	0.00
7,900.00	90.25	268.02	7,139.66	988.94	-1,100.28	1,065.40	0.00	0.00	0.00
8,000.00	90.25	268.02	7,139.23	985.48	-1,200.22	1,165.40	0.00	0.00	0.00
8,100.00	90.25	268.02	7,138.79	982.02	-1,300.16	1,265.40	0.00	0.00	0.00
8,200.00	90.25	268.02	7,138.36	978.56	-1,400.10	1,365.40	0.00	0.00	0.00
8,300.00	90.25	268.02	7,137.93	975.10	-1,500.04	1,465.40	0.00	0.00	0.00
8,400.00	90.25	268.02	7,137.49	971.64	-1,599.98	1,565.40	0.00	0.00	0.00
8,500.00	90.25	268.02	7,137.06	968.18	-1,699.92	1,665.40	0.00	0.00	0.00
8,600.00	90.25	268.02	7,136.62	964.72	-1,799.86	1,765.40	0.00	0.00	0.00
8,700.00	90.25	268.02	7,136.19	961.26	-1,899.80	1,865.39	0.00	0.00	0.00
8,800.00	90.25	268.02	7,135.76	957.80	-1,999.74	1,965.39	0.00	0.00	0.00
8,900.00	90.25	268.02	7,135.32	954.34	-2,099.68	2,065.39	0.00	0.00	0.00
9,000.00	90.25	268.02	7,134.89	950.88	-2,199.61	2,165.39	0.00	0.00	0.00
9,100.00	90.25	268.02	7,134.45	947.42	-2,299.55	2,265.39	0.00	0.00	0.00
9,200.00	90.25	268.02	7,134.02	943.96	-2,399.49	2,365.39	0.00	0.00	0.00
9,300.00	90.25	268.02	7,133.59	940.50	-2,499.43	2,465.39	0.00	0.00	0.00
9,400.00	90.25	268.02	7,133.15	937.04	-2,599.37	2,565.39	0.00	0.00	0.00

Database:	EDM 5000.14 Single User Db	Local Co-ordinate Reference:	Well HARVESTERS STATE 4N-16C-M
Company:	SRC ENERGY	TVD Reference:	KB @ 4821.00ft
Project:	SECTION 15, T6N, R66W	MD Reference:	KB @ 4821.00ft
Site:	HARVESTERS STATE 7-15 PAD	North Reference:	True
Well:	HARVESTERS STATE 4N-16C-M	Survey Calculation Method:	Minimum Curvature
Wellbore:	OH		
Design:	PLAN #1		

Planned Survey									
Measured Depth (ft)	Inclination (°)	Azimuth (°)	Vertical Depth (ft)	+N/-S (ft)	+E/-W (ft)	Vertical Section (ft)	Dogleg Rate (°/100ft)	Build Rate (°/100ft)	Turn Rate (°/100ft)
9,500.00	90.25	268.02	7,132.72	933.58	-2,699.31	2,665.39	0.00	0.00	0.00
9,600.00	90.25	268.02	7,132.29	930.12	-2,799.25	2,765.39	0.00	0.00	0.00
9,700.00	90.25	268.02	7,131.85	926.66	-2,899.19	2,865.39	0.00	0.00	0.00
9,800.00	90.25	268.02	7,131.42	923.20	-2,999.13	2,965.38	0.00	0.00	0.00
9,900.00	90.25	268.02	7,130.98	919.74	-3,099.07	3,065.38	0.00	0.00	0.00
10,000.00	90.25	268.02	7,130.55	916.28	-3,199.01	3,165.38	0.00	0.00	0.00
10,100.00	90.25	268.02	7,130.12	912.82	-3,298.95	3,265.38	0.00	0.00	0.00
10,200.00	90.25	268.02	7,129.68	909.36	-3,398.88	3,365.38	0.00	0.00	0.00
10,300.00	90.25	268.02	7,129.25	905.90	-3,498.82	3,465.38	0.00	0.00	0.00
10,400.00	90.25	268.02	7,128.82	902.43	-3,598.76	3,565.38	0.00	0.00	0.00
10,500.00	90.25	268.02	7,128.38	898.97	-3,698.70	3,665.38	0.00	0.00	0.00
10,600.00	90.25	268.02	7,127.95	895.51	-3,798.64	3,765.38	0.00	0.00	0.00
10,700.00	90.25	268.02	7,127.51	892.05	-3,898.58	3,865.38	0.00	0.00	0.00
10,800.00	90.25	268.02	7,127.08	888.59	-3,998.52	3,965.38	0.00	0.00	0.00
10,900.00	90.25	268.02	7,126.65	885.13	-4,098.46	4,065.37	0.00	0.00	0.00
11,000.00	90.25	268.02	7,126.21	881.67	-4,198.40	4,165.37	0.00	0.00	0.00
11,100.00	90.25	268.02	7,125.78	878.21	-4,298.34	4,265.37	0.00	0.00	0.00
11,200.00	90.25	268.02	7,125.35	874.75	-4,398.28	4,365.37	0.00	0.00	0.00
11,300.00	90.25	268.02	7,124.91	871.29	-4,498.22	4,465.37	0.00	0.00	0.00
11,400.00	90.25	268.02	7,124.48	867.83	-4,598.15	4,565.37	0.00	0.00	0.00
11,500.00	90.25	268.02	7,124.04	864.37	-4,698.09	4,665.37	0.00	0.00	0.00
11,600.00	90.25	268.02	7,123.61	860.91	-4,798.03	4,765.37	0.00	0.00	0.00
11,700.00	90.25	268.02	7,123.18	857.45	-4,897.97	4,865.37	0.00	0.00	0.00
11,800.00	90.25	268.02	7,122.74	853.99	-4,997.91	4,965.37	0.00	0.00	0.00
11,900.00	90.25	268.02	7,122.31	850.53	-5,097.85	5,065.36	0.00	0.00	0.00
12,000.00	90.25	268.02	7,121.88	847.07	-5,197.79	5,165.36	0.00	0.00	0.00
12,100.00	90.25	268.02	7,121.44	843.61	-5,297.73	5,265.36	0.00	0.00	0.00
12,200.00	90.25	268.02	7,121.01	840.15	-5,397.67	5,365.36	0.00	0.00	0.00
12,300.00	90.25	268.02	7,120.57	836.69	-5,497.61	5,465.36	0.00	0.00	0.00
12,400.00	90.25	268.02	7,120.14	833.23	-5,597.55	5,565.36	0.00	0.00	0.00
12,500.00	90.25	268.02	7,119.71	829.77	-5,697.49	5,665.36	0.00	0.00	0.00
12,600.00	90.25	268.02	7,119.27	826.31	-5,797.42	5,765.36	0.00	0.00	0.00
12,700.00	90.25	268.02	7,118.84	822.85	-5,897.36	5,865.36	0.00	0.00	0.00
12,800.00	90.25	268.02	7,118.41	819.39	-5,997.30	5,965.36	0.00	0.00	0.00
12,900.00	90.25	268.02	7,117.97	815.93	-6,097.24	6,065.36	0.00	0.00	0.00
13,000.00	90.25	268.02	7,117.54	812.47	-6,197.18	6,165.35	0.00	0.00	0.00
13,100.00	90.25	268.02	7,117.10	809.01	-6,297.12	6,265.35	0.00	0.00	0.00
13,200.00	90.25	268.02	7,116.67	805.54	-6,397.06	6,365.35	0.00	0.00	0.00
13,300.00	90.25	268.02	7,116.24	802.08	-6,497.00	6,465.35	0.00	0.00	0.00
13,400.00	90.25	268.02	7,115.80	798.62	-6,596.94	6,565.35	0.00	0.00	0.00
13,500.00	90.25	268.02	7,115.37	795.16	-6,696.88	6,665.35	0.00	0.00	0.00
13,600.00	90.25	268.02	7,114.93	791.70	-6,796.82	6,765.35	0.00	0.00	0.00
13,700.00	90.25	268.02	7,114.50	788.24	-6,896.76	6,865.35	0.00	0.00	0.00
13,800.00	90.25	268.02	7,114.07	784.78	-6,996.69	6,965.35	0.00	0.00	0.00
13,900.00	90.25	268.02	7,113.63	781.32	-7,096.63	7,065.35	0.00	0.00	0.00
14,000.00	90.25	268.02	7,113.20	777.86	-7,196.57	7,165.35	0.00	0.00	0.00
14,100.00	90.25	268.02	7,112.77	774.40	-7,296.51	7,265.34	0.00	0.00	0.00
14,200.00	90.25	268.02	7,112.33	770.94	-7,396.45	7,365.34	0.00	0.00	0.00
14,300.00	90.25	268.02	7,111.90	767.48	-7,496.39	7,465.34	0.00	0.00	0.00
14,400.00	90.25	268.02	7,111.46	764.02	-7,596.33	7,565.34	0.00	0.00	0.00
14,500.00	90.25	268.02	7,111.03	760.56	-7,696.27	7,665.34	0.00	0.00	0.00
14,600.00	90.25	268.02	7,110.60	757.10	-7,796.21	7,765.34	0.00	0.00	0.00
14,700.00	90.25	268.02	7,110.16	753.64	-7,896.15	7,865.34	0.00	0.00	0.00
14,800.00	90.25	268.02	7,109.73	750.18	-7,996.09	7,965.34	0.00	0.00	0.00

Database:	EDM 5000.14 Single User Db	Local Co-ordinate Reference:	Well HARVESTERS STATE 4N-16C-M
Company:	SRC ENERGY	TVD Reference:	KB @ 4821.00ft
Project:	SECTION 15, T6N, R66W	MD Reference:	KB @ 4821.00ft
Site:	HARVESTERS STATE 7-15 PAD	North Reference:	True
Well:	HARVESTERS STATE 4N-16C-M	Survey Calculation Method:	Minimum Curvature
Wellbore:	OH		
Design:	PLAN #1		

Planned Survey									
Measured Depth (ft)	Inclination (°)	Azimuth (°)	Vertical Depth (ft)	+N/-S (ft)	+E/-W (ft)	Vertical Section (ft)	Dogleg Rate (°/100ft)	Build Rate (°/100ft)	Turn Rate (°/100ft)
14,900.00	90.25	268.02	7,109.30	746.72	-8,096.03	8,065.34	0.00	0.00	0.00
14,964.70	90.25	268.02	7,109.02	744.48	-8,160.69	8,130.04	0.00	0.00	0.00
PBHL_HARVESTERS STATE 4N-16C-M(741 FNL 150 FWL)									
14,968.16	90.25	268.02	7,109.00	744.36	-8,164.15	8,133.50	0.00	0.00	0.00
BHL(841 FNL 150 FWL)									

Design Targets									
Target Name	Dip Angle (°)	Dip Dir. (°)	TVD (ft)	+N/-S (ft)	+E/-W (ft)	Northing (usft)	Easting (usft)	Latitude	Longitude
- hit/miss target									
- Shape									
PBHL_HARVESTERS S	0.00	0.00	7,109.00	844.36	-8,164.15	1,423,365.20	3,196,950.01	40.4933800	-104.7918620
- plan misses target center by 99.94ft at 14964.70ft MD (7109.02 TVD, 744.48 N, -8160.69 E)									
- Point									
TOP_HARVESTERS ST	0.00	0.00	7,141.00	899.85	-790.16	1,423,482.02	3,204,323.27	40.4935360	-104.7653490
- plan misses target center by 99.77ft at 7593.14ft MD (7140.99 TVD, 999.56 N, -793.61 E)									
- Point									

Casing Points					
Measured Depth (ft)	Vertical Depth (ft)	Name	Casing Diameter (in)	Hole Diameter (in)	
1,761.21	1,750.00	9 5/8"	9.625	13.500	

Plan Annotations				
Measured Depth (ft)	Vertical Depth (ft)	+N/-S (ft)	+E/-W (ft)	Comment
600.00	600.00	0.00	0.00	Start Build 2.00
1,065.50	1,063.45	37.26	-6.00	Start 5534.85 hold at 1065.50 MD
6,600.35	6,525.40	921.27	-148.39	Start DLS 9.00 TFO -82.89
7,590.23	7,141.00	999.66	-790.70	LP(656 FNL 2217 FWL)
14,968.16	7,109.00	744.36	-8,164.15	BHL(841 FNL 150 FWL)