

HALLIBURTON

iCem[®] Service

CATAMOUNT EXPLORATION LLC

For: Reed Fischer

Date: Sunday, December 03, 2017

IGW-123B

IGW-123B

CATAMOUNT - IGW-123B

Job Date: Sunday, December 03, 2017

Sincerely,

Farmington Cement Engineering

Legal Notice

Warning Disclaimer

Although the information contained in this report is based on sound engineering practices, the copyright owner(s) does (do) not accept any responsibility whatsoever, in negligence or otherwise, for any loss or damage arising from the possession or use of the report whether in terms of correctness or otherwise. The application, therefore, by the user of this report or any part thereof, is solely at the user's own risk.

Limitations of Liability

Except as expressly set forth herein, there are no representations or warranties by Halliburton, express or implied, including implied warranties of merchantability and/or fitness for a particular purpose. In no event will Halliburton or its suppliers be liable for consequential, incidental, special, punitive or exemplary damages (including, without limitation, loss of data, profits, use of hardware, or software). Customer accepts full responsibility for any investment made based on results from the Software. Any interpretations, analyses or modeling of any data, including, but not limited to Customer data, and any recommendation or decisions based upon such interpretations, analyses or modeling are opinions based upon inferences from measurements and empirical relationships and assumptions, which inferences and assumptions are not infallible, and with respect to which professional may differ. Accordingly, Halliburton cannot and does not warrant the accuracy, correctness or completeness of any such interpretation, recommendation, modeling or other products of the Software Product. As such, any interpretation, recommendation or modeling resulting from the Software for the purpose of any drilling, well treatment, production or financial decision will be at the sole risk of Customer. Under no circumstances will Halliburton or its suppliers be liable for any damages.

Table of Contents

1.0 Job Design 4

 1.1 Overview.....4

 1.1 Pump Schedule4

2.0 Real-Time Job Summary 5

 2.1 Job Event Log5

3.0 Attachments..... 8

 3.1 CATAMOUNT - IGW-123B- With Events.png8

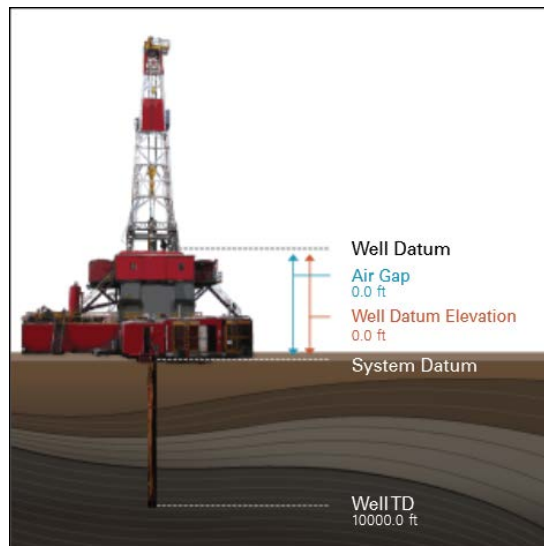
 3.2 CATAMOUNT - IGW-123B- Without Events.png9

1.0 Job Design

1.1 Overview

Job Type	Primary Cement Job
Injection Path	Casing/Conventional
Foam Job	No

Well Snapshot



Simulations Performed

1.1 Pump Schedule

Description	Stage No.	Density (ppg)	Rate (bbl/min)	Yield (ft³/sack)	Water Req. (gal/sack)	Volume (bbl)	Bulk Cement (sacks)	Duration (min)
Int Mud	1	9.20	4.00			0.00		0.00
Tuned Spacer	2	11.50	5.50			20.00		3.64
PRB Lead 2334020/1	3	12.30	5.50	2.4347	13.641	41.19	95.00	7.49
PRB Lead 2334020/1 w/CBL	4	12.30	5.50	2.4347	13.641	69.38	160.00	12.61
PRB Tail 2334025/1	5-1	13.50	5.50	1.8690	9.406	44.94	135.00	8.17
Shutdown	5-2			1.8690	9.406		0.00	10.00
Top Plug/Start Displacement								
Fresh Water	6-1	8.33	6.00			50.00		8.33
Fresh Water	6-2	8.33	4.00			25.00		6.25
Fresh Water	6-3	8.33	2.00			11.64		5.82
Total:						262.16		62.32

*Pump schedule may include additional rows for displacement if "Automatic Rate Adjustment" was enabled and ECDs approached the fracture gradient.

2.0 Real-Time Job Summary

2.1 Job Event Log

Type	Seq. No.	Graph Label	Date	Time	Source	PS Pump Press (psi)	PS Pump Rate (bbl/min)	DH Density (ppg)	Pump Stg Tot (bbl)	Comments
Event	1	Call Out	12/3/2017	03:30:00	USER					REQUESTED ON LOCATION TIME 0700
Event	2	Pre-Convoy Safety Meeting	12/3/2017	06:30:00	USER					WITH HES, JSA COMPLETED, 1 F-450, 1 RED TIGER CEMENTING UNIT, 2 660 BULK TRUCKS
Event	3	Arrive At Loc	12/3/2017	08:50:00	USER					RIG RUNNING CASING UPON HES ARRIVAL, ALL EQUIPMENT AND MATERIALS ON LOCATION
Event	4	Assessment Of Location Safety Meeting	12/3/2017	09:00:00	USER					WITH HES, JSA COMPLETED, SDS OFFERED FOR ALL HES MATERIALS
Event	5	Other	12/3/2017	09:20:00	USER					WATER TEST: CHLOR 0, TEMP 53 DEG F, PH 7.3
Event	6	Pre-Rig Up Safety Meeting	12/3/2017	09:30:00	USER					WITH HES, JSA COMPLETED
Event	7	Rig-Up Equipment	12/3/2017	09:40:00	USER					1 LINE RAN TO THE FLOOR, 1 LINE RAN TO THE PIT, MANIFOLD ON THE GROUND, 1, 5.5 IN QUICK-LATCH PLUG CONTAINER
Event	8	Other	12/3/2017	10:00:00	USER					TD 3596 FT, TP 3586 FT, CSG 5.5 IN. 17 LB/FT J-55, HOLE 7.875 IN, SHOE 45 FT, SURFACE SET AT 377 FT, 8.625 IN 24 LB/FT J-55
Event	9	Other	12/3/2017	10:15:00	USER	10.00	0.00	8.44	0.0	RIG CIRCULATION, 504 BBL, 121 PSI, 5.6 BBL/MIN, PIPE WAS STATIC, RAT HOLE LENGTH 10 FT, MWT 9.0 LB/GAL WBM
Event	10	Pre-Job Safety Meeting	12/3/2017	10:20:00	USER	12.00	0.00	8.44	0.0	WITH HES, CATAMOUNT, AND D&J 3, JSA COMPLETED
Event	11	Start Job	12/3/2017	10:38:54	COM4	9.00	0.00	8.43	0.0	
Event	12	Fill Lines	12/3/2017	10:42:47	USER	35.00	2.00	8.52	0.6	2 BBL FRESH WATER, RETURNS AT 2 BBL AWAY
Event	13	Test Lines	12/3/2017	10:47:14	COM4	4576.00	0.00	8.60	2.2	LOW TEST AT 1855 PSI, HIGH TEST AT 4576 PSI, PRESSURE HOLDING
Event	14	Pump Tuned Spacer III	12/3/2017	10:53:52	COM4	18.00	0.00	11.50	0.0	MIXED AT 11.5 LB/GAL, 20 BBL, 3.73 FT3/SK, 24 GAL/SK, DENSITY VERIFIED USING PRESSURIZED MUD

SCALES

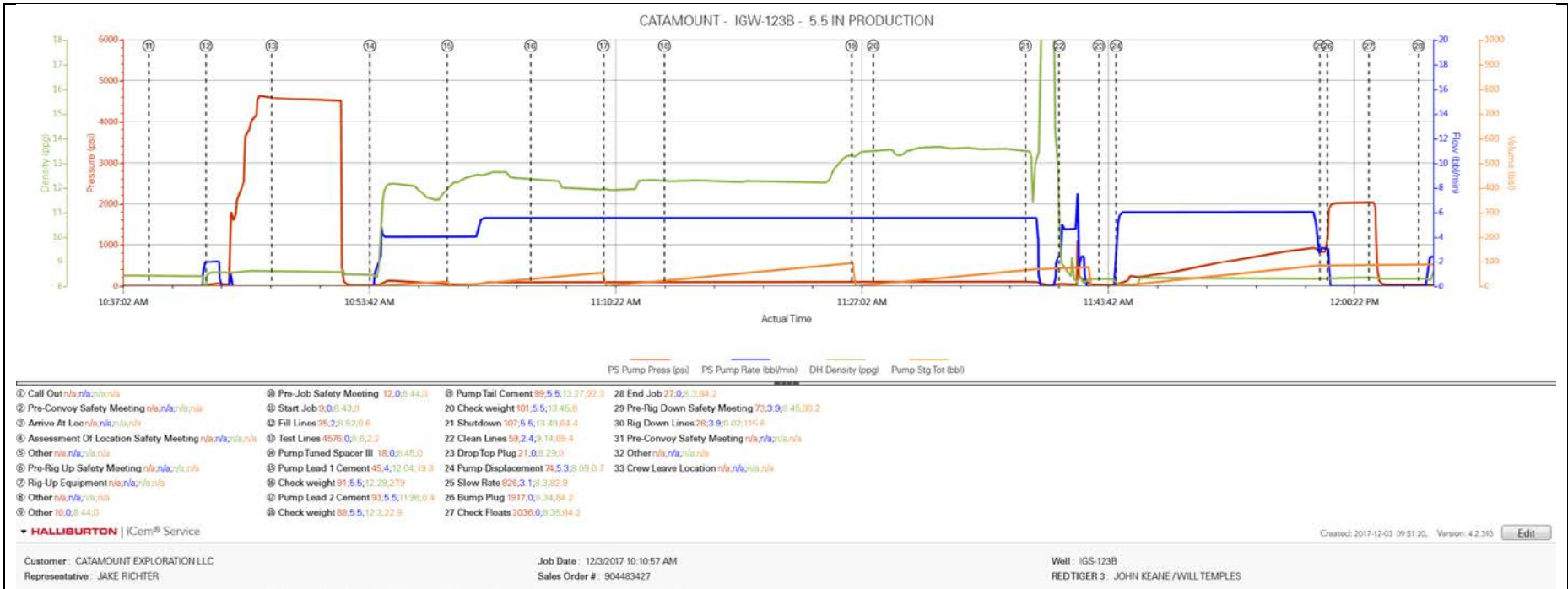
Event	15	Pump Lead 1 Cement	12/3/2017	10:59:07	COM4	45.00	4.00	12.30	41.1	MIXED AT 12.3 LB/GAL, 95 SKS, 2.43 FT3/SK, 13.61GAL/SK, DENSITY VERIFIED USING PRESSURIZED MUD SCALES
Event	16	Check weight	12/3/2017	11:04:45	COM4	91.00	5.50	12.29	27.9	DENSITY VERIFIED USING PRESSURIZED MUD SCALES
Event	17	Pump Lead 2 Cement	12/3/2017	11:09:41	COM4	93.00	5.50	12.30	69.2	MIXED AT 12.3 LB/GAL, 160 SKS, 2.43 FT3/SK, 13.64 GAL/SK, DENSITY VERIFIED USING PRESSURIZED MUD SCALES
Event	18	Check weight	12/3/2017	11:13:48	COM4	88.00	5.50	12.30	22.9	DENSITY VERIFIED USING PRESSURIZED MUD SCALES
Event	19	Pump Tail Cement	12/3/2017	11:26:28	COM4	99.00	5.50	13.27	45.0	MIXED AT 13.5 LB/GAL, 135 SKS, 1.87 FT3/SK, 9.40 GAL/SK, DENSITY VERIFIED USING PRESSURIZED MUD SCALES
Event	20	Check weight	12/3/2017	11:27:56	COM4	101.00	5.50	13.45	8.0	DENSITY VERIFIED USING PRESSURIZED MUD SCALES
Event	21	Shutdown	12/3/2017	11:38:14	USER	107.00	5.50	13.49	64.4	
Event	22	Clean Lines	12/3/2017	11:40:31	COM4	59.00	2.40	9.14	69.4	WASHED PUMPS AND LINES TO THE RESERVE PIT
Event	23	Drop Top Plug	12/3/2017	11:43:12	USER	21.00	0.00	8.29	0.0	PLUG LAUNCHED, CUSTOMER WITNESSED
Event	24	Pump Displacement	12/3/2017	11:44:22	COM4	74.00	5.30	8.09	82.8	FRESH WATER
Event	25	Slow Rate	12/3/2017	11:58:09	USER	826.00	3.10	8.30	75.0	SLOWED AT 75 BBL AWAY TO 3 BBL/MIN
Event	26	Bump Plug	12/3/2017	11:58:39	USER	1917.00	0.00	8.34	81.8	PLUG BUMPED AT CALCULATED DISPLACEMENT, 830 PSI
Event	27	Check Floats	12/3/2017	12:01:28	USER	2036.00	0.00	8.35	81.8	FLOATS HOLDING, .5 BBL RETURNED TO THE TRUCK
Event	28	End Job	12/3/2017	12:04:50	COM4					NO ADD HOURS, RIG SUPPLIED TOP PLUG, RIG DID NOT USE SUGAR
Event	29	Pre-Rig Down Safety Meeting	12/3/2017	12:10:00	USER					WITH HES, JSA COMPLETED
Event	30	Rig Down Lines	12/3/2017	12:15:00	USER					
Event	31	Pre-Convoy Safety Meeting	12/3/2017	12:30:00	USER					WITH HES, JSA COMPLETED
Event	32	Other	12/3/2017	12:45:00	USER					SPACER 20 BBL TUNED SPACER III, LEAD 1 CEMENT 41.1

BBL, LEAD 2 CEMENT 69.2 BBL, TAIL CEMENT 45.0 BBL,
42 BBL CEMENT CIRCULATED TO SURFACE, TOP OF TAIL
CEMENT 2165 FT, FINAL DISPLACEMENT 81.8 BBL

Event	33	Crew Leave Location	12/3/2017	12:50:00	USER	THANKS FOR USING HALLIBURTON, JOHN KEANE AND CREW
-------	----	---------------------	-----------	----------	------	--

3.0 Attachments

3.1 CATAMOUNT - IGW-123B- With Events.png



3.2 CATAMOUNT - IGW-123B- Without Events.png

