

HALLIBURTON

iCem[®] Service

TERRA ENERGY LTD.

For: Terra

Date: Wednesday, September 27, 2017

GM 413-4 Surface

API#05-045-23503

Sincerely,
Grand Junction Cement Engineering

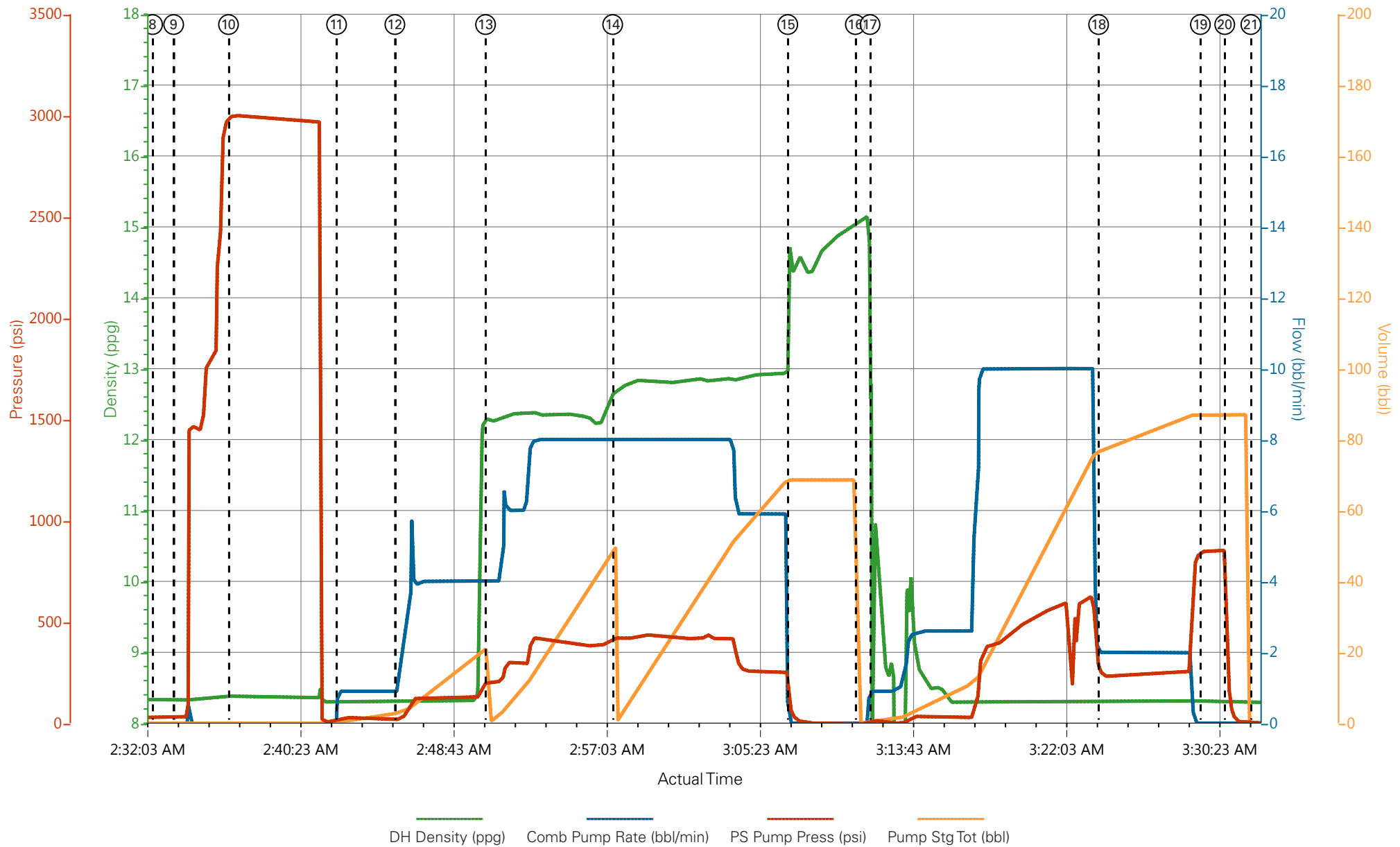
1.0 Real-Time Job Summary

1.1 Job Event Log

Type	Seq. No.	Graph Label	Date	Time	Source	Pass-Side Pump Pressure (psi)	Downhole Density (ppg)	Combined Pump Rate (bbl/min)	Pump Stage Total (bbl)	Comments
Event	1	Call Out	9/26/2017	18:00:00	USER					REQUESTED ON LOCATION @ 0000
Event	2	Pre-Convoy Safety Meeting	9/26/2017	20:00:00	USER					ALL HES PRESENT
Event	3	Crew Leave Yard	9/26/2017	20:15:00	USER					1 F550, 1 PUMP TRUCK & 1 660 BULK TURCK
Event	4	Arrive At Loc	9/26/2017	22:00:00	USER					RIG PULLING DRILL PIPE
Event	5	Assessment Of Location Safety Meeting	9/26/2017	22:15:00	USER					MET WITH COMP REP AND WENT OVER NUMBERS AND JOB PROCEDURE. WALKED AROUND LOCATION AND COLLECTED WATER SAMPLE (PH- 7, CHLORIDES- 100, TEMP- 62F). COMP REP WAS OFFERED SDS FOR ALL CHEMICLES USED BY HES.
Event	6	Pre-Rig Up Safety Meeting	9/26/2017	22:20:00	USER					ALL HES PRESENT
Event	7	Pre-Job Safety Meeting	9/27/2017	02:10:00	USER					ALL HES AND RIG CREW PRESENT
Event	8	Start Job	9/27/2017	02:32:30	COM6					TD 1085', TP 1075', SJ 39.4', OH 13.5", CSG 9.625" 32.3#, MUD 9.3 PPG. RIG CIRCULATED WELL FOR APPROX 1 HRS.
Event	9	Prime Pumps	9/27/2017	02:33:38	COM6	33.00	8.33	1.00	2.0	8.33 PPG FRESH WATER
Event	10	Test Lines	9/27/2017	02:36:37	COM6	2997.00	8.38	0.50	0.5	ALL LINES HELD PRESSURE AT 2997 PSI
Event	11	Pump Spacer 1	9/27/2017	02:42:30	COM6	215.00	8.32	4.00	20.0	8.33 PPG FRESH WATER (20 BBL)
Event	12	Check weight	9/27/2017	02:45:40	COM6					WEIGHT VERIFIED VIA PRESSUREIZED MUD SCALES
Event	13	Pump Lead Cement	9/27/2017	02:50:36	COM6	423.00	12.30	8.00	45.0	VARICEM CEMENT 105 SKS (45 BBLs), 12.3 PPG, 2.38 FT3/SK, 13.77 GAL/SK
Event	14	Pump Tail Cement	9/27/2017	02:57:31	COM6	422.00	12.80	8.00	66.0	VARICEM CEMENT 175 SKS (66 BBLs), 12.8 PPG, 2.11 FT3/SK, 11.78 GAL/SK.
Event	15	Shutdown	9/27/2017	03:07:03	USER					END OF CEMENT

Event	16	Drop Plug	9/27/2017	03:10:44	USER					PLUG WENT, VERIFIED BY CO REP
Event	17	Pump Displacement	9/27/2017	03:11:32	COM6	651.00	8.38	10.00	71.2	8.34 PPG FRESH WATER (81.5 BBLs)
Event	18	Slow Rate	9/27/2017	03:23:58	USER	244.00	8.30	2.00	10.3	SLOW RATE TO 2 BPM PER CO REP TO LAND PLUG
Event	19	Bump Plug	9/27/2017	03:29:30	USER	849.00	8.31	0.00	81.5	LAND PLUG AT 233 PSI, BROUGHT UP TO 878 PSI
Event	20	Check Floats	9/27/2017	03:30:50	USER		8.32	0.00	81.5	FLOATS HELD, 1 BBL BACK TO TRUCK
Event	21	End Job	9/27/2017	03:32:15	USER					RETURNS THROUGHOUT JOB , 20 BBL OF CEMENT BACK TO SURFACE
Event	22	Post-Job Safety Meeting (Pre Rig-Down)	9/27/2017	03:35:00	USER					ALL HES PRESENT
Event	23	Rig-Down Equipment	9/27/2017	03:50:00	USER					ALL HES PRESENT
Event	24	Pre-Convoy Safety Meeting	9/27/2017	04:05:00	USER					ALL HES PRESENT
Event	25	Crew Leave Location	9/27/2017	04:10:50	USER					THANK YOU FOR CHOOSING HALLIBURTON CEMENT, CHRIS SMITH AND CREW

TEP - GM 413-4 - 9.625" SURFACE



- | | | | | | | | |
|-----------------------------|---|--------------------------|-----------------|--------------------|---------------------|-----------------|-----------|
| ① Call Out | ④ Arrive At Loc | ⑦ Pre-Job Safety Meeting | ⑩ Test Lines | ⑬ Pump Lead Cement | ⑯ Drop Plug | ⑲ Bump Plug | 22 Post-J |
| ② Pre-Convoy Safety Meeting | ⑤ Assessment Of Location Safety Meeting | ⑧ Start Job | ⑪ Pump Spacer 1 | ⑭ Pump Tail Cement | ⑰ Pump Displacement | 20 Check Floats | 23 Rig-Dc |
| ③ Crew Leave Yard | ⑥ Pre-Rig Up Safety Meeting | ⑨ Prime Pumps | ⑫ Check weight | ⑮ Shutdown | ⑱ Slow Rate | 21 End Job | 24 Pre-Co |

TEP - GM 413-4 - 9.625" SURFACE

