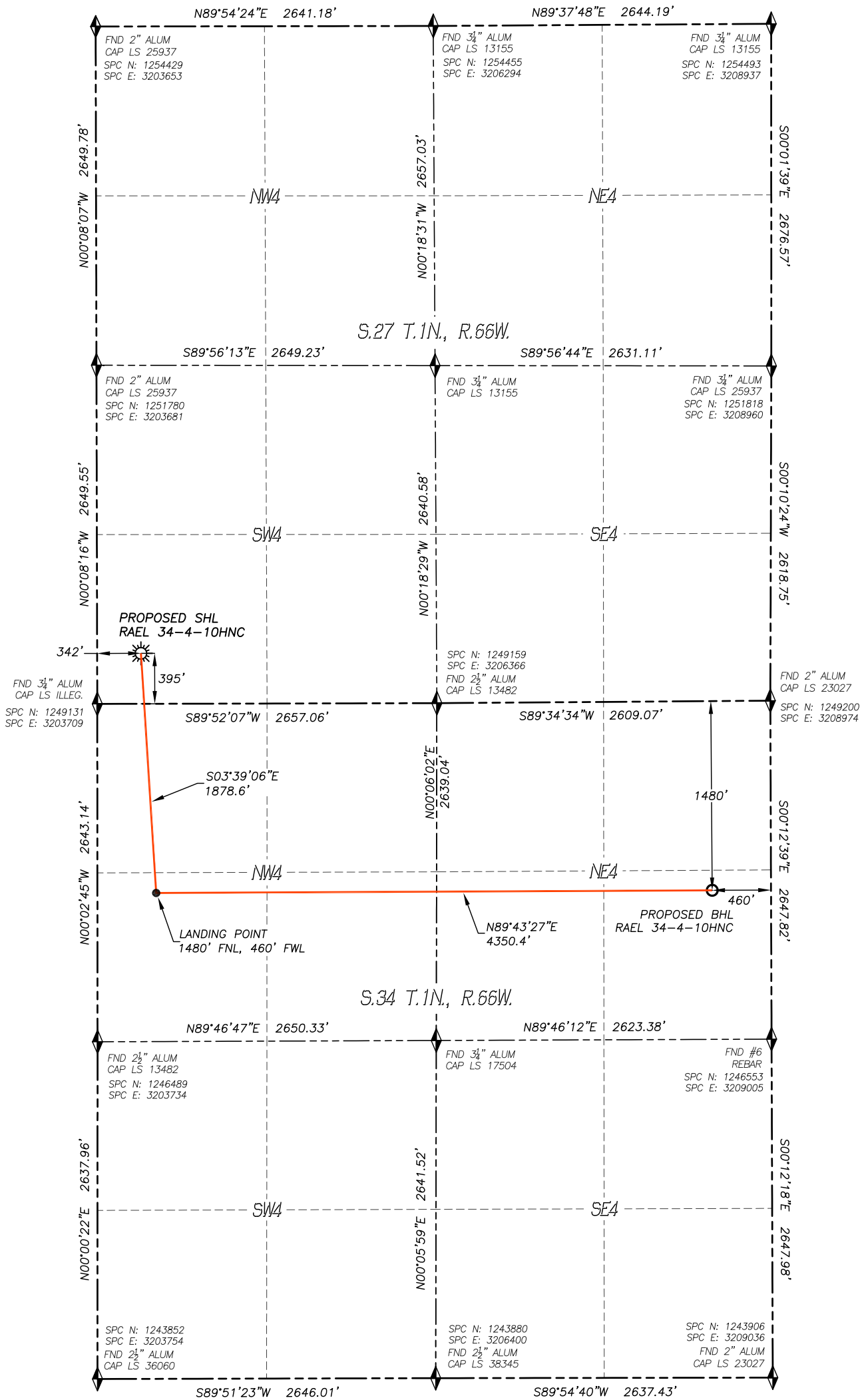


WELL LOCATION CERTIFICATE
RAEL 34-4-10HNC

SECTION: 27
TOWNSHIP: 1N
RANGE: 66W

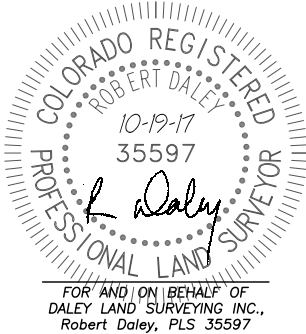


IN ACCORDANCE WITH A REQUEST FROM WARD PETROLEUM CORP., DALEY LAND SURVEYING, INC. HAS DETERMINED THE SURFACE LOCATION OF THE Rael 34-4-10HNC WELL TO BE 395' FSL, 342' FWL, AS MEASURED AT NINETY (90) DEGREES FROM THE SECTION LINES OF SECTION 27, TOWNSHIP 1 NORTH, RANGE 66 WEST, AND THE BOTTOM HOLE LOCATION TO BE 1480' FNL, 460' FEL, AS MEASURED AT NINETY (90) DEGREES FROM THE SECTION LINES OF SECTION 34, TOWNSHIP 1 NORTH, RANGE 66 WEST, OF THE 6TH PRINCIPAL MERIDIAN, WELD COUNTY, COLORADO.

I HEREBY STATE THAT THIS WELL LOCATION CERTIFICATE WAS PREPARED BY ME OR UNDER MY DIRECT SUPERVISION, THAT THE WORK WAS COMPLETED ON 9/21/2017 FOR AND ON BEHALF OF WARD PETROLEUM CORP., AND THAT THIS MAP DOES NOT REPRESENT A BOUNDARY SURVEY, IT IS NOT A LAND SURVEY PLAT OR AN IMPROVEMENT SURVEY PLAT AND IT IS NOT TO BE RELIED UPON FOR THE ESTABLISHMENT OF FENCE, BUILDING OR OTHER FUTURE IMPROVEMENT LINES.

NOTES:

- BEARINGS FOR THIS MAP ARE ASSUMED AND BASED UPON GPS OBSERVATIONS MADE BETWEEN MONUMENTS LOCATED AT THE SOUTHWEST CORNER AND SOUTH QUARTER CORNER OF SECTION 27, T.1N., R.66W.
- HORIZONTAL DATUM IS NAD83. COORDINATES SHOWN ARE GRID COORDINATES, COLORADO STATE PLANE NORTH ZONE (501).
- VERTICAL DATUM IS NAVD88 AND ORIGINATES FROM THE LOCAL C.O.R.S. NETWORK, UTILIZING THE GEOID12A MODEL.
- SEE LOCATION DRAWING FOR VISIBLE IMPROVEMENTS WITHIN 500' OF PROPOSED DISTURBED AREA.
- SURFACE USE: PASTURE.
- INST. OPERATOR: SCOTT ESTABROOKS.



NEAREST CULTURAL ITEMS:

BUILDING: 746'± SW
BUILDING UNIT: 649'± SW
HIGH OCC. BLD. UNIT: 5280'+
DES. OUTSIDE ACTIVITY AREA: 5280'+
PUBLIC ROAD: 332'± W
ABOVE GROUND UTILITY: 309'± W
RAILROAD: 5280'+
PROPERTY LINE: 342'± W

NAD 83 LATITUDE AND LONGITUDE

SURFACE LOCATION:

LATITUDE: N40.01604°
LONGITUDE: W104.77148°
SPC NORTH: 1249529
SPC EAST: 3204048
ELEV: 5118'
PDOP: 1.5
QTR/QTR: SW4/SW4

LANDING POINT:

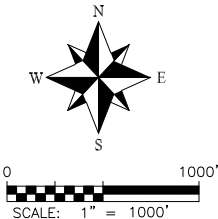
LATITUDE: N40.01090°
LONGITUDE: W104.77105°
SPC NORTH: 1247656
SPC EAST: 3204183

BOTTOM HOLE:

LATITUDE: N40.01096°
LONGITUDE: W104.75553°
SPC NORTH: 1247713
SPC EAST: 3208531

LEGEND

- FOUND MONUMENT AS DESCRIBED
- PROPOSED WELL
- EXISTING WELL
- BOTTOM HOLE
- ABANDONED WELL
- CALCULATED POSITION



WARD PETROLEUM

DALEY LAND
SURVEYING, INC.
PARKER, COLORADO
303.953.9841