



Kerr-McGee Oil & Gas Onshore LP

A subsidiary of Anadarko Petroleum Corporation

1099 18th Street
Denver, CO 80202
720-929-6000

November 30, 2017

Matt Lepore
Director, Colorado Oil and Gas Conservation Commission
Department of Natural Resources
The Chancery Building
1120 Lincoln Street, Suite 801
Denver, CO 80203

Re: **30 Day Certification Letter - 318A.e**
ZELDA 25-2HZ (Doc No. 401455498)
Township 2 North, Range 65 West
Section 25: NWNW
Unit Acreage: 360 Acres
Unit Spacing: 01N65W SEC 1: NWNW
02N65W SEC 25: W2W2; SEC 36: W2W2
Weld County, Colorado

Dear Director Lepore:

Kerr-McGee Oil and Gas Onshore LP (“KMG”) hereby certifies that a thirty (30) day notice was sent to 3 mineral owners by certified mail. We have not received any objections to such well location, proposed spacing unit, or additional producing formation from the 2 notices. The undeliverable notices have a combined working interest of 2.34%. KMG hereby respectfully requests approval of this well.

If you have any questions or issues regarding this permit, please contact me at (720) 929-6907.

Sincerely,

Kerr-McGee Oil and Gas Onshore LP

A handwritten signature in blue ink, appearing to read 'Craig Richardson'.

Craig Richardson
Regulatory Analyst II

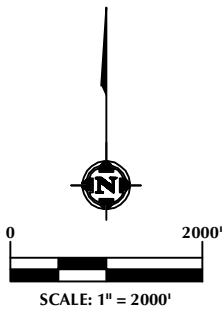
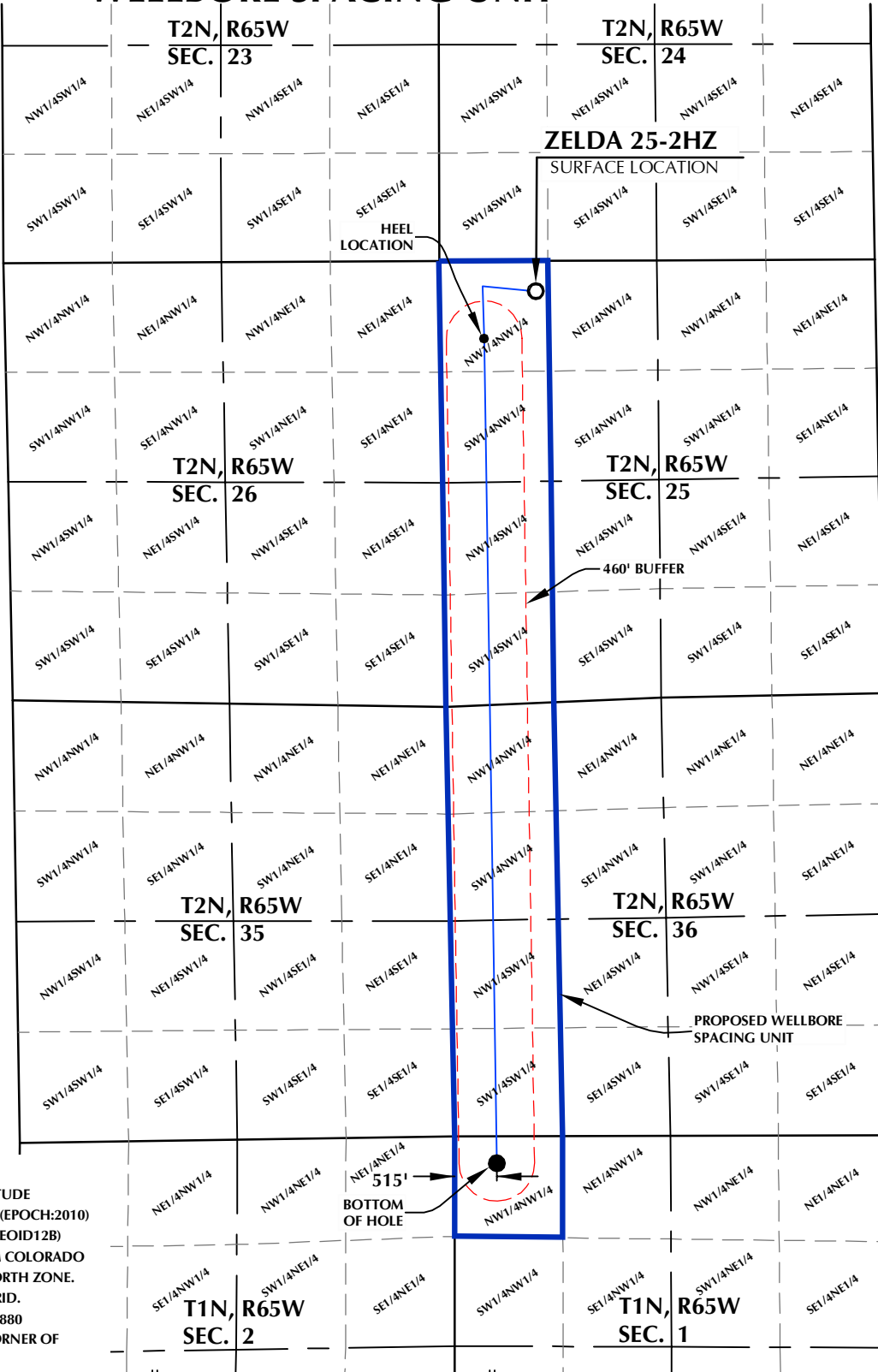
Enclosure

ZELDA 25-2HZ

WELLBORE SPACING UNIT

DISTANCE FROM COMPLETED
PORTION OF WELLBORE TO
NEAREST UNIT BOUNDARY= 515'

SURFACE LOCATION: NAD 83
GROUND ELEVATION= 4897.9'
LATITUDE= 40.115731°
LONGITUDE= -104.617547°
LATITUDE= 40°06'56.631"
LONGITUDE= -104°37'03.168"
HEEL LOCATION: NAD 83
LATITUDE= 40.114157°
LONGITUDE= -104.619828°
LATITUDE= 40°06'50.966"
LONGITUDE= -104°37'11.380"
BOTTOM HOLE LOCATION: NAD 83
LATITUDE= 40.086601°
LONGITUDE= -104.619630°
LATITUDE= 40°05'11.764"
LONGITUDE= -104°37'10.668"



NOTES:

1. DRAWING LATITUDE AND LONGITUDE COORDINATES ARE NAD 83 (2011)(EPOCH:2010)
2. ELEVATION BASED ON NAVD88 (GEOID12B)
3. BASIS OF BEARING DERIVED FROM COLORADO COORDINATE SYSTEM OF 1983 NORTH ZONE.
4. ALL MEASURED DISTANCES ARE GRID.
COMBINED SCALE FACTOR: .99972880
CALCULATED FROM THE N. 1/4 CORNER OF SECTION 25, T2N, R65W

WELL PAD - ZELDA 25-6HZ

ZELDA 25-2HZ
WELLBORE SPACING UNIT
373' FNL & 1174' FWL NWNW (SURFACE)
950' FNL & 532' FWL NWNW (HEEL)
LOCATED IN SECTION 25
T2N, R65W, 6TH P.M.
332' FNL & 515' FWL LOT 2 (NWNW) (BOTTOM)
LOCATED IN SECTION 1
T1N, R65W, 6TH P.M.
WELD COUNTY, COLORADO

**Kerr-McGee Oil &
Gas Onshore L.P.**
1099 18th Street
Denver, Colorado 80202



CONSULTING, LLC

SHERIDAN OFFICE
1095 Saberton Avenue
Sheridan, Wyoming 82801
Phone 307-674-0609

LOVELAND OFFICE
1635 Foxtrail Drive, Suite 204
Loveland, Colorado 80538
Phone 970-776-4331

DRAFTED BY:	LMO	CHECKED BY:	RKF
DATE DRAFTED:	9/15/17	DATE SURVEYED:	7/27/17
REVISED:		FILE NAME:	16-188