

NOBLE ENERGY INC.

Bockius 34-01G

NENE 34-4N-65W

560 FNL & 476 FEL

WELD COUNTY, CO

Wattenberg

CURRENT WELLBORE SCHEMATIC

with PROPOSED P&A

2/24/2017

API: 05-123-15294
COGCC #

GL Elev: 4,735
KB Elev: 4,746

Spud Date: 12/2/1991

Surface Casing :

8-5/8", 23# @ 518'

Cement: 375 sx

TOC: Surface

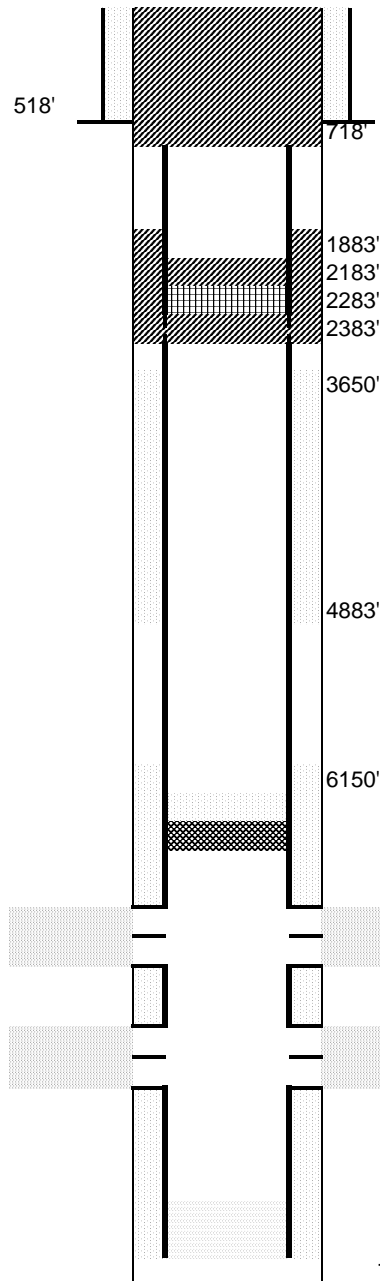
TOC: 3650'
Sussex Top: 4106'

Production Casing :

4-1/2", M-75, 11.60# @ 7,188'

Cement: 400 sx

TD: 7199



Cut surface casing off 6'-8' below surface.

Pump 135 sx and bring to surface
Pump 125 sx balance plug (w/ GasChek)
Cut and pull csg @ 718'

Pump 190 sx thru and 2 bbls (10 sx) on top
(w/ Gaschek)
Set CICR @ 2,283'
Perforate csg @ 2,383'

CIBP @ 6,722' w/ 2 sx cement on top

Niobrara Perforations: 6,772' - 6,937'

Codell Perforations: 7,056' - 7,070'

TD: 7199