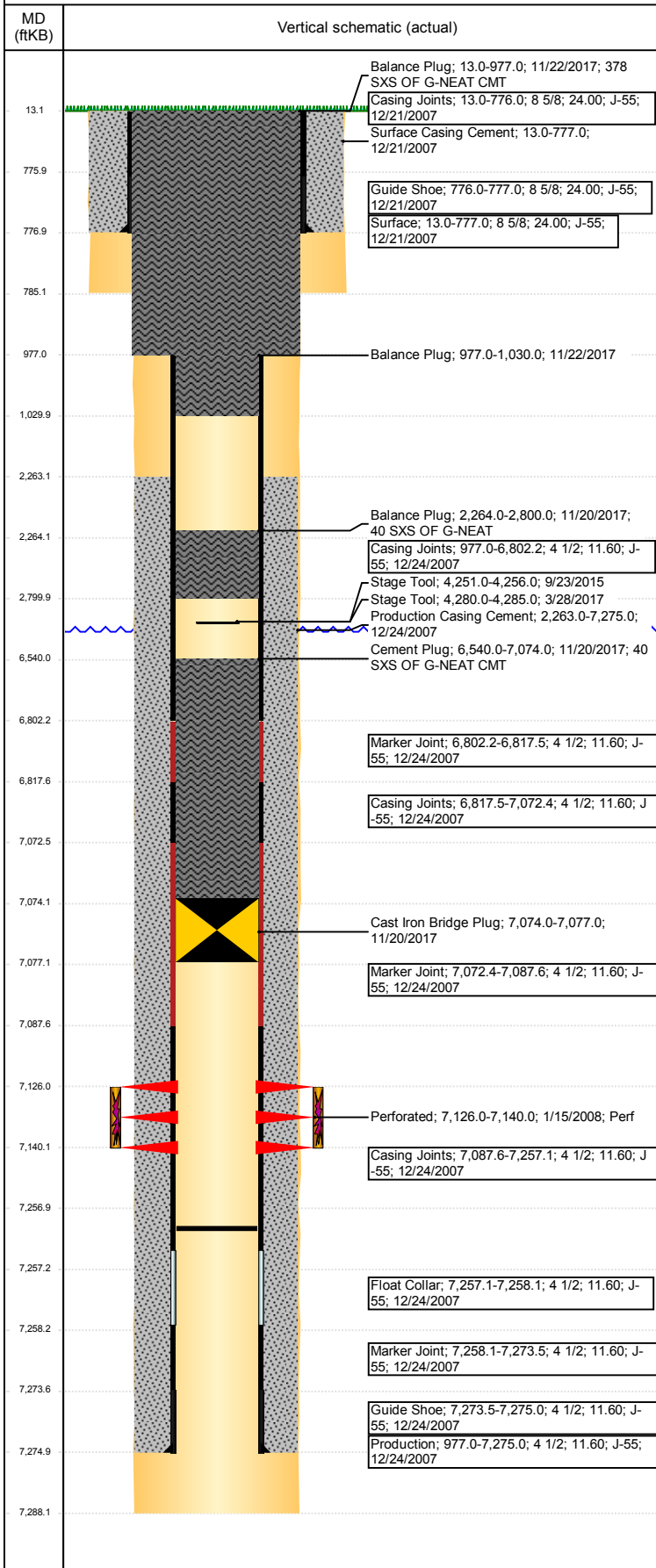


# Wellbore Schematic Input Report

Well Name: BOOTH USX EE25-16

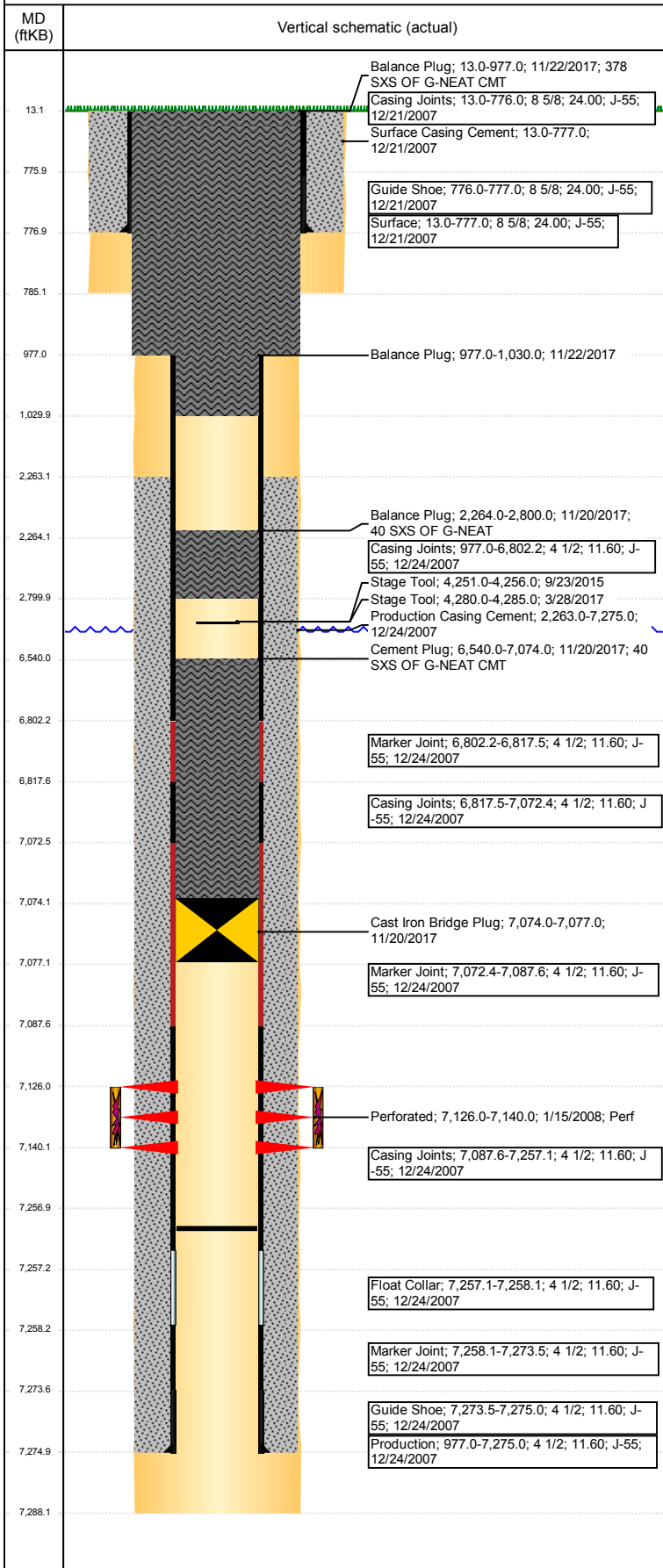
VERTICAL - ORIGINAL HOLE, 12/12/2017 11:13:39 AM



Well Header						
API 05-123-26592	Business Unit DJ BASIN		District 15		Well Config VERTICAL	
Original KB Elevation (ft) 4,865	KB - GL / MSL (ftKB) 13.00		Spud Date 12/20/2007		P & A Date 11/22/2017	
Comment						
Directions To Well From the intersection of WCR 76 and WCR 49, go West 1/10, then North 1/10 to location						
Congressional Location						
Quarter 3 SE	Quarter 4 SE	Section 25	Township 7	Twnshp N/S Dir N	Range 65	Range E/W Dir W
Bottom Hole Location						
North-South Distance (ft)		From N or S Line		East-West Distance (ft)		From E or W Line
Plug Back Total Depths						
Date	Depth (ftKB)	Method		Com		
12/25/2007	7,257.0	CASING TALLY				
Wellbore Sections						
Section Des		Size (in)		Act Top, MD (ftKB)		Act Btm, MD (ftKB)
SURFACE		12 1/4		13		785
PRODUCTION		7 7/8		785		7,288
Zone Statuses						
Zone Name	Status Date	Status	Fluid Type	Job	Prod Method	
CODELL	2/5/2008	PR		DRILLING/CO...		
CODELL	11/20/2017	P&A				
Casing Strings						
Surface, 777.0ftKB						
Casing Description Surface		Run Date 12/21/2007	OD (in) 8 5/8	Wt/Len (l... 24.00	Grade J-55	Top, MD (ft... 13.0 MD (ftKB) 777.0
Production, 7,275.0ftKB						
Casing Description Production		Run Date 12/24/2007	OD (in) 4 1/2	Wt/Len (l... 11.60	Grade J-55	Top, MD (ft... 13.0 MD (ftKB) 7,275.0
Cement						
Description Surface Casing Cement				Top Depth (ftKB) 13.0		Bottom Depth (ftKB) 777.0
Description Production Casing Cement				Top Depth (ftKB) 2,263.0		Bottom Depth (ftKB) 7,275.0
Description Balance Plug				Top Depth (ftKB) 2,264.0		Bottom Depth (ftKB) 2,800.0
Description Cement Plug				Top Depth (ftKB) 6,540.0		Bottom Depth (ftKB) 7,074.0
Description Balance Plug				Top Depth (ftKB) 977.0		Bottom Depth (ftKB) 1,030.0
Description Balance Plug				Top Depth (ftKB) 13.0		Bottom Depth (ftKB) 977.0
Tubing Strings						
Tubing Description Tubing - Production		Run Date 1/15/2008	String... 2 3/8	ID (in) 2.00	Wt (lb/ft) 4.70	Grade J-55 Len (ft) 7,103.10 Set De...
Tubing Components						
Item Des		OD (in)	Wt (lb/ft)	Grade	Jts	Len (ft) Btm (ftKB) Btm (TVD) (ftKB)
Tubing Pup Joint		2 3/8			1	10.00 21.9
Tubing		2 3/8	4.70	J-55	231	7,091.70 7,113.6
Pump Seating		2 3/8			1	1.10 7,114.7
Nipple						
Notched collar		3 1/16			1	0.30 7,115.0
Other In Hole						
Run Date		Des			OD (in)	Top (ftKB) Btm (ftKB)
11/20/2017		Cast Iron Bridge Plug			3.99	7,074.0 7,077.0
Logs						
Date		Type			Top, MD (ftKB)	Btm, MD (ftKB)
12/24/2007		Caliper/Comp.Density/Neutron/GR/SP /ML			2,900.0	7,261.0
12/24/2007		DIL/GR/SP/Caliper			777.0	7,281.0
1/11/2008		CBL/CCL/GR			2,150.0	7,236.0
10/25/2017		GYRO			12.0	7,000.0

**Well Name: BOOTH USX EE25-16**

VERTICAL - ORIGINAL HOLE, 12/12/2017 11:13:40 AM



## Perforation Data

Linked Zone	Bnch/St g	Sum of Entered Shot Total	Top (ftKB)	Btm (ftKB)	Date
CODELL, ORIGINAL HOLE		56	7,126.00	7,140.00	1/15/2008
<b>Total (Sum)</b>		<b>56</b>			

## Stimulation Intervals

Start Date 2/1/2008	Primary Job Type DRILLING/COMPLETION - ORIGINAL	
Technical Result Success	Tech Result Details According to Plan	Tech Result Note
Comment (CODELL) TREATMENT WENT WELL AD TO RUN 0.1 PSA HEAVY FOR THE 1psa - 3 PSA STAGES DUE TO BEING TIGHT ON WATER		