



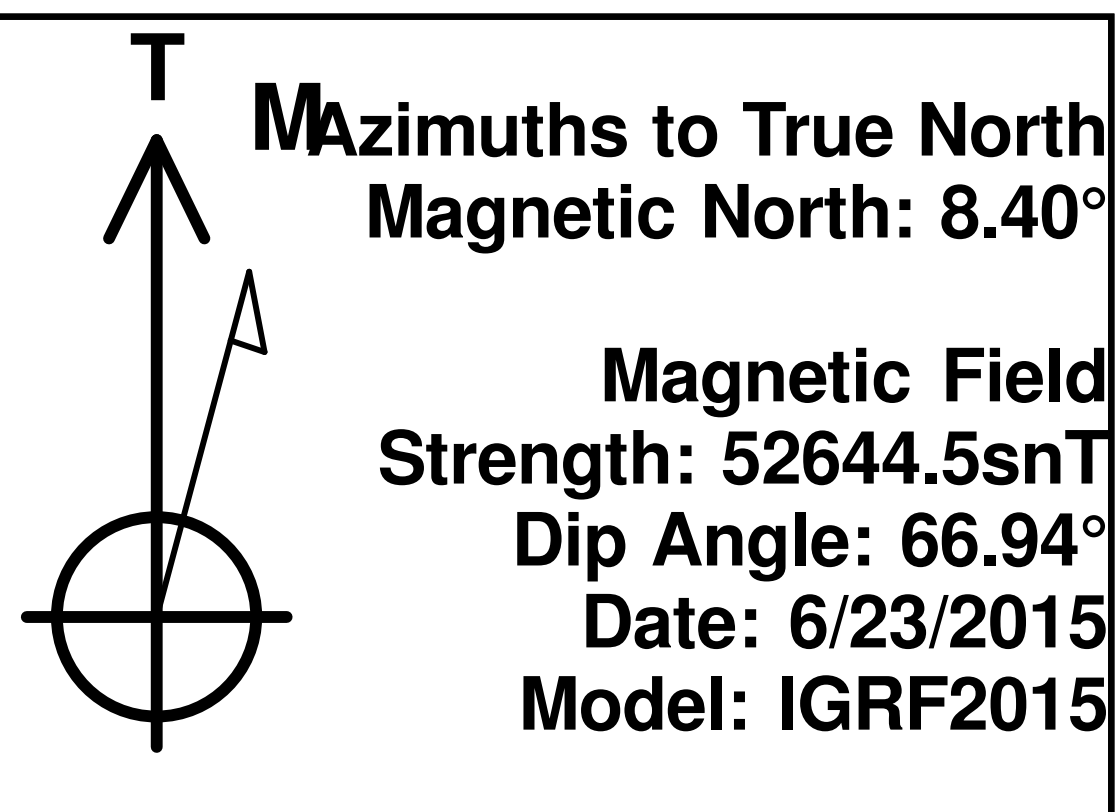
EXTRACTION OIL & GAS
Project: WELD COUNTY, COLORADO (NAD 83)
Site: SW SE SEC 36 T6N R66W 6th P.M.
Well: CS-LONGMEADOW 1-1-13
Wellbore: JOB #2017-158-341
Plan: Plan #3 (CS-LONGMEADOW 1-1-13/JOB #2017-158-341)
PATT 341

WELL DETAILS: CS-LONGMEADOW 1-1-13
Ground Elevation:: 4663.0
RKB Elevation: KB @ 4688.0usft (PATT 341)
Rig Name: PATT 341

		Northing	Easting	Latitude	Longitude
0.0	0.0	1403487.33	3216422.04	40° 26' 18.132 N	104° 43' 20.928 W

Planned Section Details

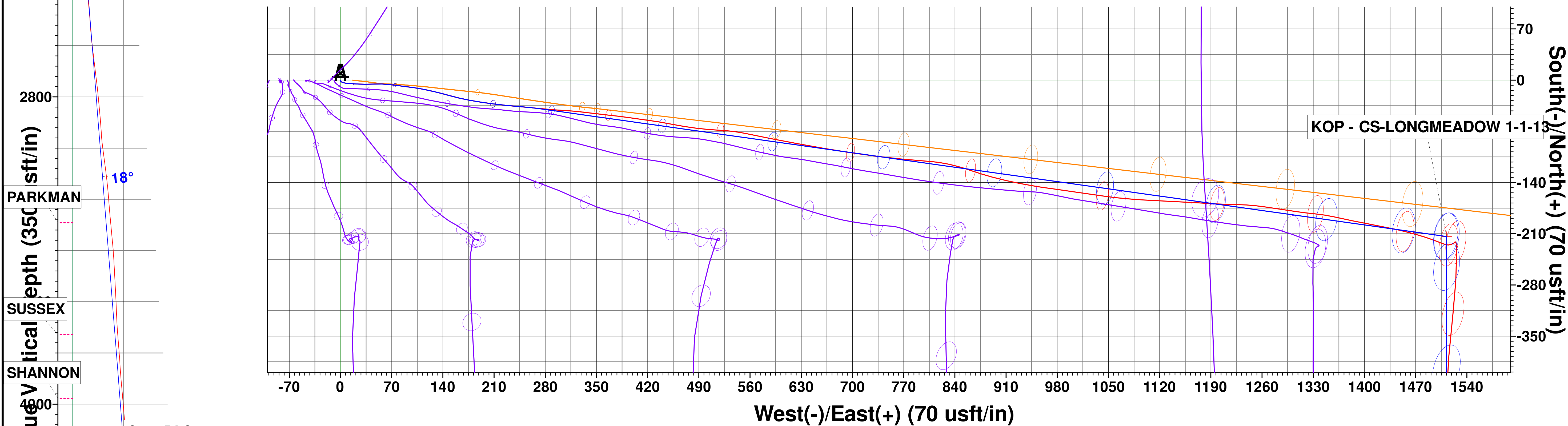
Sec	MD	Inc	Azi	TVD	+N/-S	+E/-W	Dleg	TFace	VSect
1	1595.0	17.80	95.00	1561.9	-37.2	256.7	0.00	0.00	64.7
2	1641.2	17.80	98.02	1605.8	-38.8	270.8	2.00	91.44	67.8
3	5294.1	17.80	98.02	5083.9	-194.6	1376.5	0.00	0.00	341.7
4	6184.1	0.00	0.00	5959.7	-213.8	1512.3	2.00	-180.00	375.3
5	6481.4	0.00	0.00	6257.0	-213.8	1512.3	0.00	0.00	375.3
6	7381.4	90.00	180.08	6830.0	-786.7	1511.5	10.00	180.08	944.9
7	20383.9	90.00	180.08	6830.0	-13789.2	1492.9	0.00	0.00	13869.8



PROJECT DETAILS: WELD COUNTY, COLORADO (NAD 83)
Geodetic System: US State Plane 1983
Datum: North American Datum 1983
Ellipsoid: GRS 1980
Zone: Colorado Northern Zone
System Datum: Mean Sea Level
Local North: True



LAST SURVEY - JUNE 16, 2017
EXTRAPOLATION TO TD - SURFACE
1st MWD Survey, JUNE 16, 2017
Start 3653.0 hold at 1641.2 MD
Start DLS 2.00 TFO 91.44

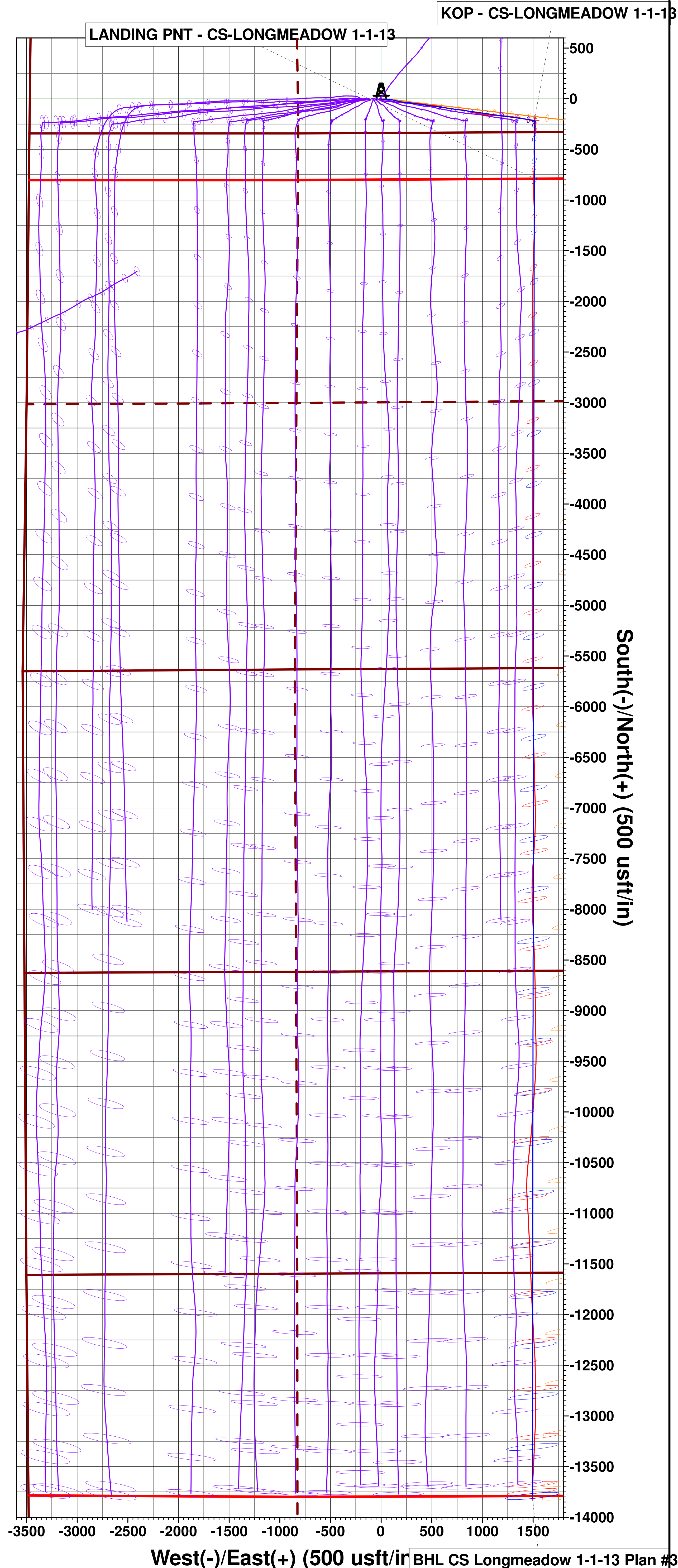


Start DLS 2.00 TFO -100.00
Start 297.3 hold at 6184.1 MD
KOP - CS-LONGMEADOW 1-1-13
Start DLS 10.00 TFO 180.08
LANDING PNT - CS-LONGMEADOW 1-1-13
Start 13002.5 hold at 7381.4 MD

NOBRARA
Last MWD Survey 20238 MD/6832.9 TVD -13677.9 S 1495.0 E N: 1389823.6 E: 3218036.8
TD at 20383.9

Vertical Section at 173.82° (350 usft/in)

PTB 20308 MD/6832.0 TVD -13747.8 S 1492.4 E N: 1389753.6 E: 3218034.8



BHL CS Longmeadow 1-1-13 Plan #3