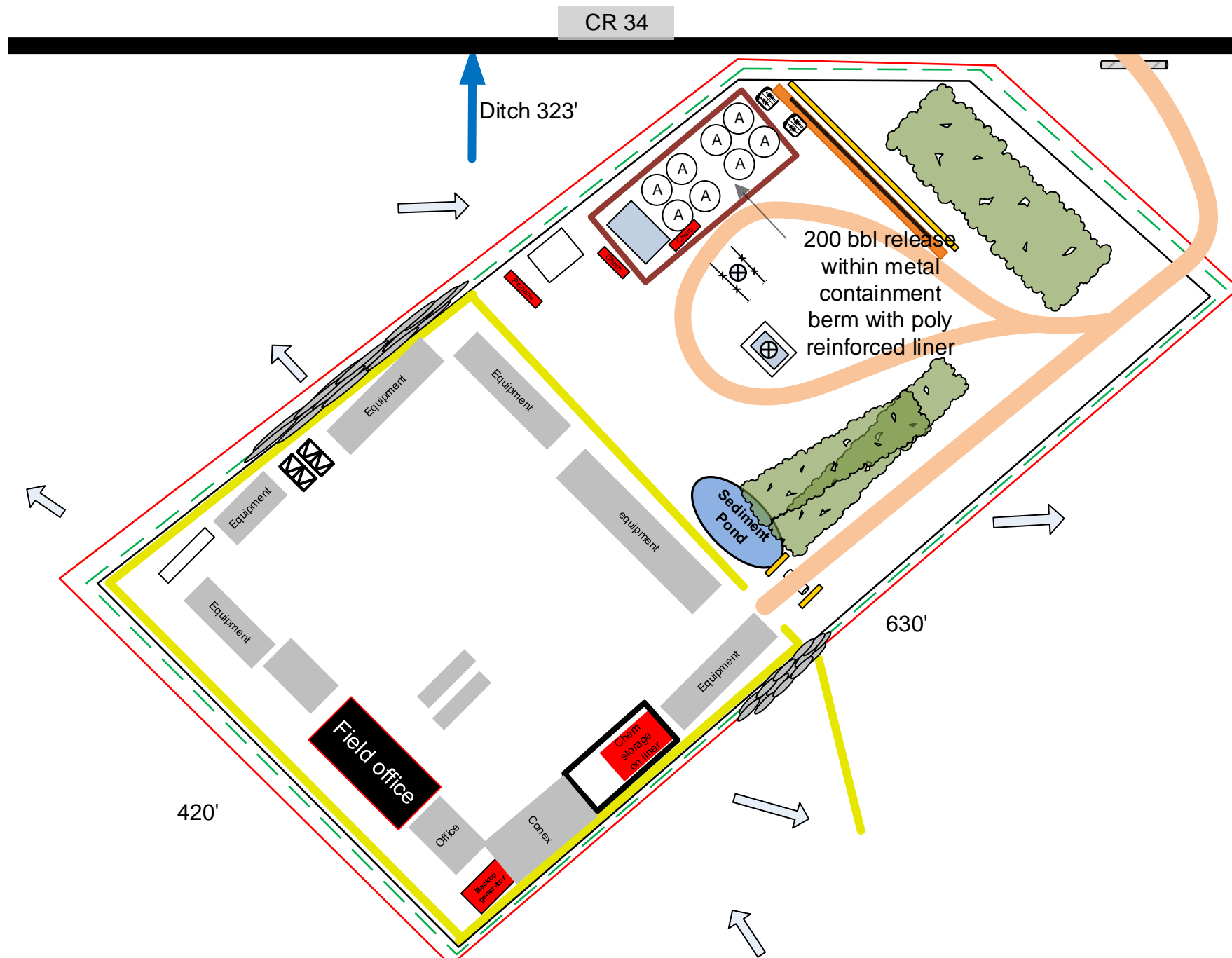
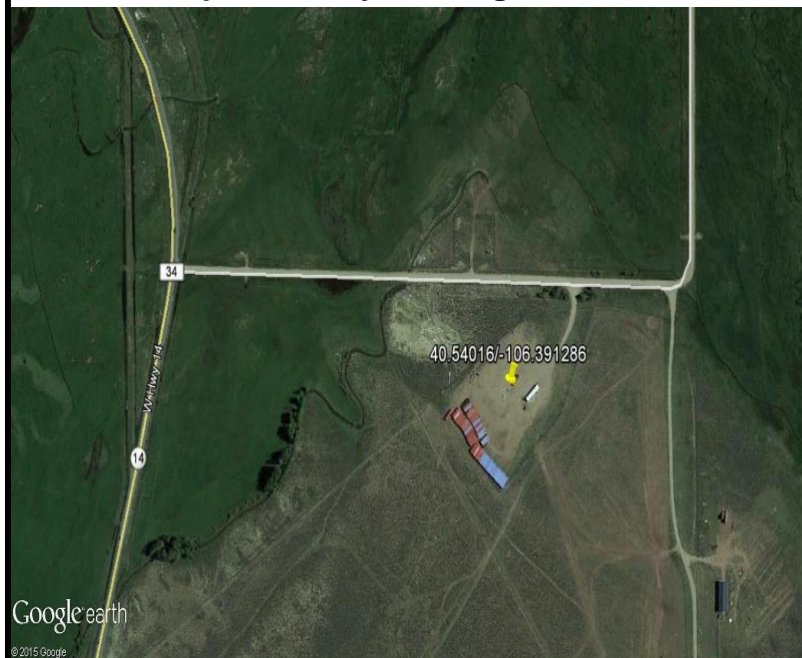


**Location:** Vaneta SWD      **ID:** 324752      **Qtr/Qtr:** NENE      **TWN:** 7N       **RNG:** 80W       **SEC:** 32  
**Land Use:** Rangeland      **Lat/Long:** 40.5404741/-106.3913022  
**Runoff Risk:** low      **County:** Jackson



Satellite Map: Courtesy of Google Earth 2015



**LEGEND**

Construction Boundary	Pad Surface Boundary	Ditch
Disturbance Boundary	Wellhead	Ditch & Berm
Cut/Fill Line	Rig	Filtrexx Sediment Control
Chemical Storage	Stock Pile	Ripping
Port-o-let	Rolloff Frac Tank	Riprap
Roadbased Surface	Frac Trailer	Roadside Ditches & Turnouts
Surface Water	Equipment Storage	Sediment Trap
Paved Road	Trailer	Seeding
Unpaved Road	Surface Flow	Silt Fence
Meter House	Cattleguard	Sound Barrier
Flare	Vehicle Tracking Control	Straw Bale
AST	Dumpster	Fence
Heater Treater	Berm	Wattle
Separator	Check Dam	55 gallon drum
	Culvert	

Topographic Map: Courtesy of Google Earth 2015



- 1) Construction site boundaries include all ground surface disturbances and approximately 10-15 feet beyond perimeter BMPs. Boundaries are subject to change at any time for pad expansion, maintenance and addition of BMP structures, or new access roads.
- 2) Site is located in a rangeland field. Site will be stabilized after drilling operations and will remain until wells are plugged and abandoned.
- 3) Receiving Body of Water:  
Ditch 323' North
- 4) Pad will be graded as close to pre-existing conditions as practicable and seeded to match the pre-disturbance vegetation type.
- 5) Pad dimensions are approximate.