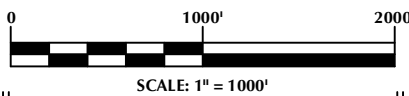


**CERTIFICATE OF SURVEYOR:**

THIS IS TO CERTIFY THAT THE ABOVE PLAT WAS PREPARED FROM FIELD NOTES OF ACTUAL SURVEYS MADE BY ME OR UNDER MY SUPERVISION AND THAT THE SAME ARE TRUE AND CORRECT TO THE BEST OF MY KNOWLEDGE AND BELIEF. THIS CERTIFICATE DOES NOT REPRESENT A LAND SURVEY THAT OR IMPROVEMENT SURVEY PLAT AS DEFINED BY C.R.S. 38-50-502 AND CANNOT BE RELIED UPON TO DETERMINE OWNERSHIP.

*Randall K. French*  
 RANDALL K. FRENCH  
 PROFESSIONAL LAND SURVEYOR  
 COLORADO REGISTRATION NUMBER 38512  
 10/19/17

NOTE:  
 MAGNETIC NORTH IS CURRENT AS OF 10/4/2017.  
 MAGNETIC NORTH CHANGES WEST 0°06' PER YEAR.



**NOTES:**

- ▲ INDICATES SECTION CORNER
- INDICATES CALCULATED CORNER
- ELEVATION BASED ON NAVD88 (GEOID12B)
- BASIS OF BEARING DERIVED FROM COLORADO COORDINATE SYSTEM OF 1983 NORTH ZONE.
- ALL MEASURED DISTANCES ARE GRID.  
 COMBINED SCALE FACTOR: .99972064 CALCULATED FROM THE S. 1/4 CORNER OF SECTION 24, T2N, R66W  
 OPERATOR: PRESTON KNUTSEN / PDOP = 1.7
- SEE ADDENDUM TO WELL LOCATION CERTIFICATE FOR EXISTING IMPROVEMENTS WITHIN 500' OF THE WELL PAD.
- WELL FOOTAGES ARE MEASURED AT RIGHT ANGLES TO THE SECTION LINES.
- THE BOTTOM OF HOLE BEARS S00°03'07"E, 4160' FROM THE HEEL LOCATION.

**WELL PAD - POLO 24-10HZ**

**POLO 24-11HZ  
 WELL LOCATION CERTIFICATE**  
 412' FSL & 2473' FWL SESW (SURFACE)  
 LOCATED IN SECTION 24  
 659' FNL & 1587' FEL NWNE (HEEL)  
 466' FSL & 1613' FEL SWSE (BOTTOM)  
 LOCATED IN SECTION 25  
 T2N, R66W, 6TH P.M.  
 WELD COUNTY, COLORADO

**Kerr-McGee Oil &  
 Gas Onshore L.P.**  
 1099 18th Street  
 Denver, Colorado 80202



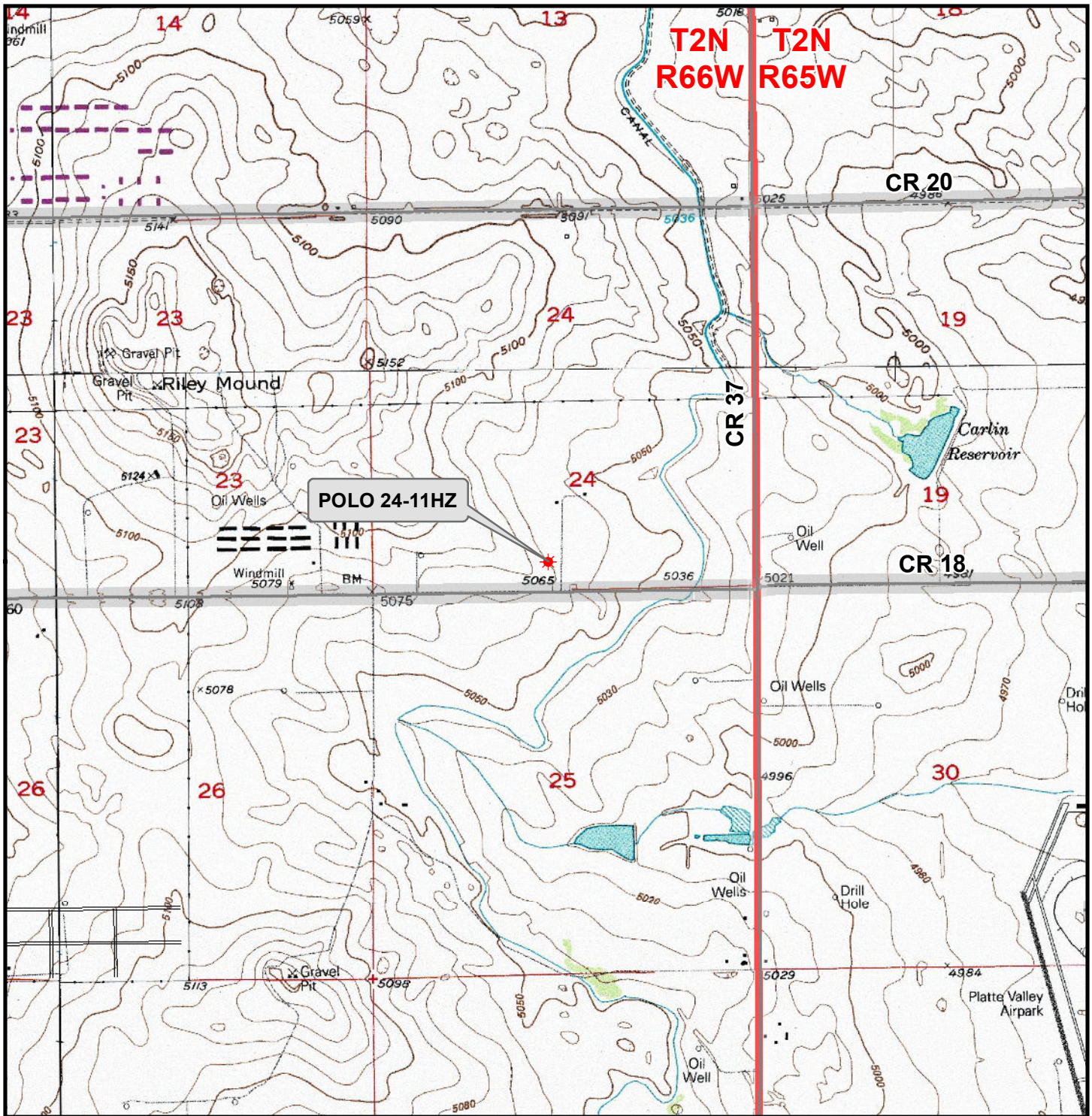
**CONSULTING, LLC**

**SHERIDAN OFFICE**  
 1095 Saberton Avenue  
 Sheridan, Wyoming 82801  
 Phone 307-674-0609

**LOVELAND OFFICE**  
 1635 Foxtrail Drive, Suite 204  
 Loveland, Colorado 80538  
 Phone 970-776-4331

DRAFTED BY:	LMO	CHECKED BY:	RKF
DATE DRAFTED:	10/19/17	DATE SURVEYED:	9/20/17
REVISED:		FILE NAME:	17-72

K:\ANADARKO\2017\2017\_72\_POLO\_T2N\_R66W\_SEC\_24\GIS\Maps\_ABC\POLO 24-10HZ\POLO 24-11HZ.mxd 10/12/2017 5:35:57 PM



**Legend**

- Well - Fee - Proposed
- Road - Primitive - Existing
- Road - County - Existing
- Road - Improved - Existing
- Road - Highway - Existing

**WELL PAD - POLO 24-10HZ  
GENERAL LOCATION MAP  
POLO 24-11HZ  
LOCATED IN SECTION 24  
T2N, R66W, 6th P.M.  
WELD COUNTY, COLORADO**

**Kerr-McGee Oil &  
Gas Onshore L.P.**

1099 18th Street  
Denver, Colorado 80202

**CONSULTING, LLC**

SHERIDAN OFFICE  
1095 Saberton Avenue  
Sheridan, Wyoming 82801  
Phone 307-674-0609

LOVELAND OFFICE  
1635 Foxtail Drive, Suite 204  
Loveland, Colorado 80538  
Phone 970-776-4331

SCALE: 1" = 2,000ft	NAD83 CO-Nft
DRAWN: DP	DATE: 19 Oct 2017
REVISED:	DATE: