



# Kerr-McGee Oil & Gas Onshore LP

A subsidiary of Anadarko Petroleum Corporation

1099 18<sup>th</sup> Street  
Denver, CO 80202  
720-929-6000

November 14, 2017

Matt Lepore  
Director, Colorado Oil and Gas Conservation Commission  
Department of Natural Resources  
The Chancery Building  
1120 Lincoln Street, Suite 801  
Denver, CO 80203

Re: **30 Day Certification Letter - 318A.e**  
GRACIE 24-12HZ (Doc No. 401417873)  
Township 2 North, Range 66 West  
Section 24: SWSE  
Unit Acreage: 400 Acres  
Unit Spacing: SEC. 24: SESW, SWSE;  
SEC. 25: E2W2, W2E2  
Weld County, Colorado

Dear Director Lepore:

Kerr McGee Oil and Gas Onshore LP (“KMG”) hereby certifies that KMG owns one hundred percent (100%) of the leasehold interest in the mineral rights in the proposed spacing unit. KMG hereby respectfully requests approval of this boundary well.

If you have any questions or issues regarding this permit, please contact our office.

Sincerely,

**Kerr-McGee Oil and Gas Onshore LP**

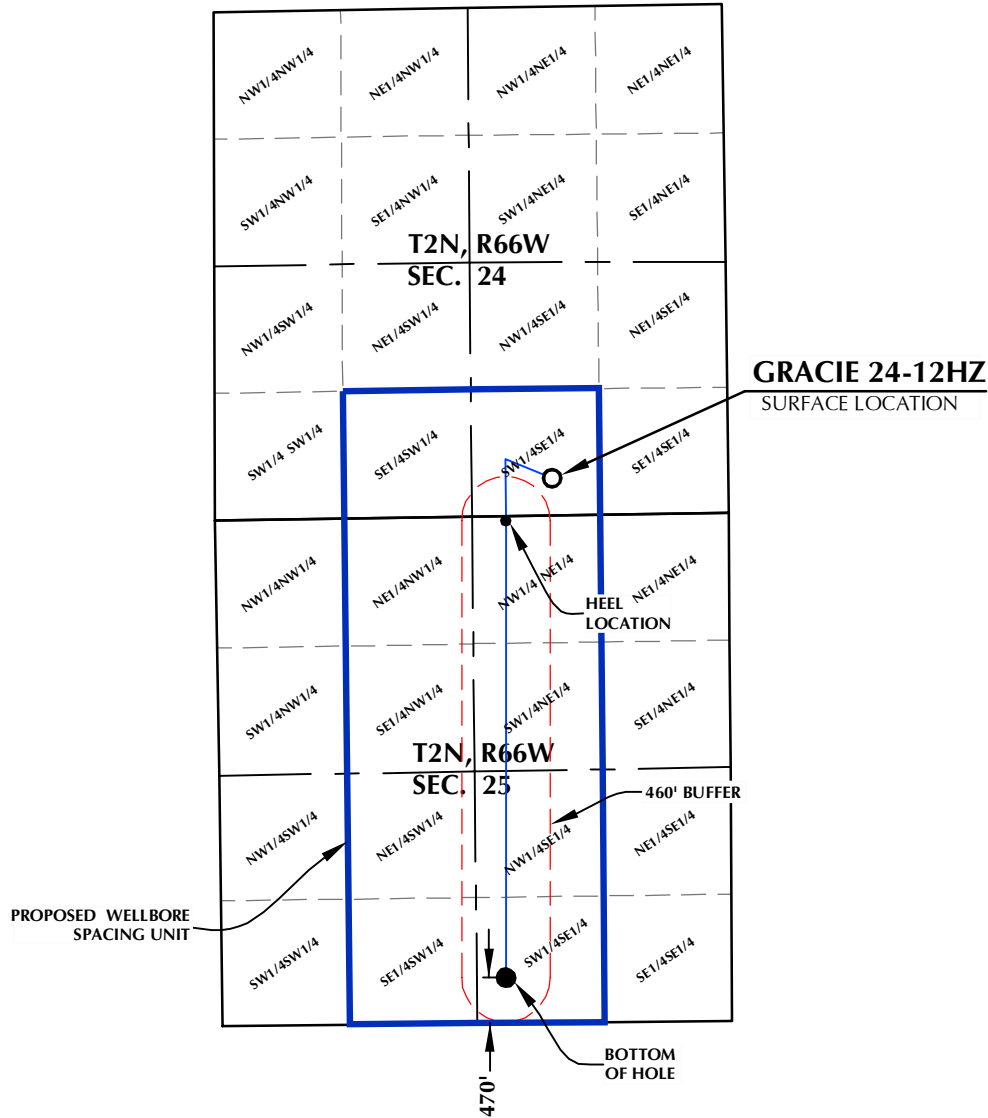
A handwritten signature in black ink, appearing to read 'John Piekara'.

John Piekara  
Sr. Regulatory Analyst

Enclosure

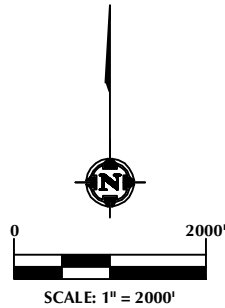
DISTANCE FROM COMPLETED  
PORTION OF WELLBORE TO  
NEAREST UNIT BOUNDARY= 470'

# GRACIE 24-12HZ WELLBORE SPACING UNIT



**NOTES:**

1. DRAWING LATITUDE AND LONGITUDE COORDINATES ARE NAD 83 (2011)(EPOCH:2010)
2. ELEVATION BASED ON NAVD88 (GEOID12B)
3. BASIS OF BEARING DERIVED FROM COLORADO COORDINATE SYSTEM OF 1983 NORTH ZONE.
4. ALL MEASURED DISTANCES ARE GRID. COMBINED SCALE FACTOR: .99972279 CALCULATED FROM THE SE. CORNER OF SECTION 24, T2N, R66W



**SURFACE LOCATION: NAD 83**  
 GROUND ELEVATION= 5052.0'  
 LATITUDE= 40.117616°  
 LONGITUDE= -104.722407°  
 LATITUDE= 40°07'03.416"  
 LONGITUDE= -104°43'20.666"  
**HEEL LOCATION: NAD 83**  
 LATITUDE= 40.116413°  
 LONGITUDE= -104.724147°  
 LATITUDE= 40°06'59.086"  
 LONGITUDE= -104°43'26.930"  
**BOTTOM HOLE LOCATION: NAD 83**  
 LATITUDE= 40.103344°  
 LONGITUDE= -104.724294°  
 LATITUDE= 40°06'12.038"  
 LONGITUDE= -104°43'27.458"

**WELL PAD - GRACIE 24-12HZ**

GRACIE 24-12HZ  
 WELLBORE SPACING UNIT  
 385' FSL & 1834' FEL SWSE (SURFACE)  
 LOCATED IN SECTION 24  
 50' FNL & 2322' FEL NWNE (HEEL)  
 470' FSL & 2355' FEL SWSE (BOTTOM)  
 LOCATED IN SECTION 25  
 T2N, R66W, 6TH P.M.  
 WELD COUNTY, COLORADO

**Kerr-McGee Oil &  
 Gas Onshore L.P.**  
 1099 18th Street  
 Denver, Colorado 80202



**CONSULTING, LLC**

**SHERIDAN OFFICE**  
 1095 Saberton Avenue  
 Sheridan, Wyoming 82801  
 Phone 307-674-0609

**LOVELAND OFFICE**  
 1635 Foxtrail Drive, Suite 204  
 Loveland, Colorado 80538  
 Phone 970-776-4331

DRAFTED BY:	LMO	CHECKED BY:	RKF
DATE DRAFTED:	9/25/17	DATE SURVEYED:	9/20/17
REVISED:		FILE NAME:	17-71