



Kerr-McGee Oil & Gas Onshore LP

A subsidiary of Anadarko Petroleum Corporation

1099 18th Street
Denver, CO 80202
720-929-6000

November 14, 2017

Matt Lepore
Director, Colorado Oil and Gas Conservation Commission
Department of Natural Resources
The Chancery Building
1120 Lincoln Street, Suite 801
Denver, CO 80203

Re: **30 Day Certification Letter - 318A.e**
GRACIE 24-11HZ (Doc No. 401417872)
Township 2 North, Range 66 West
Section 24: SWSE
Unit Acreage: 400 Acres
Unit Spacing: SEC. 24: SESW, SWSE;
SEC. 25: E2W2, W2E2
Weld County, Colorado

Dear Director Lepore:

Kerr McGee Oil and Gas Onshore LP (“KMG”) hereby certifies that KMG owns one hundred percent (100%) of the leasehold interest in the mineral rights in the proposed spacing unit. KMG hereby respectfully requests approval of this boundary well.

If you have any questions or issues regarding this permit, please contact our office.

Sincerely,

Kerr-McGee Oil and Gas Onshore LP

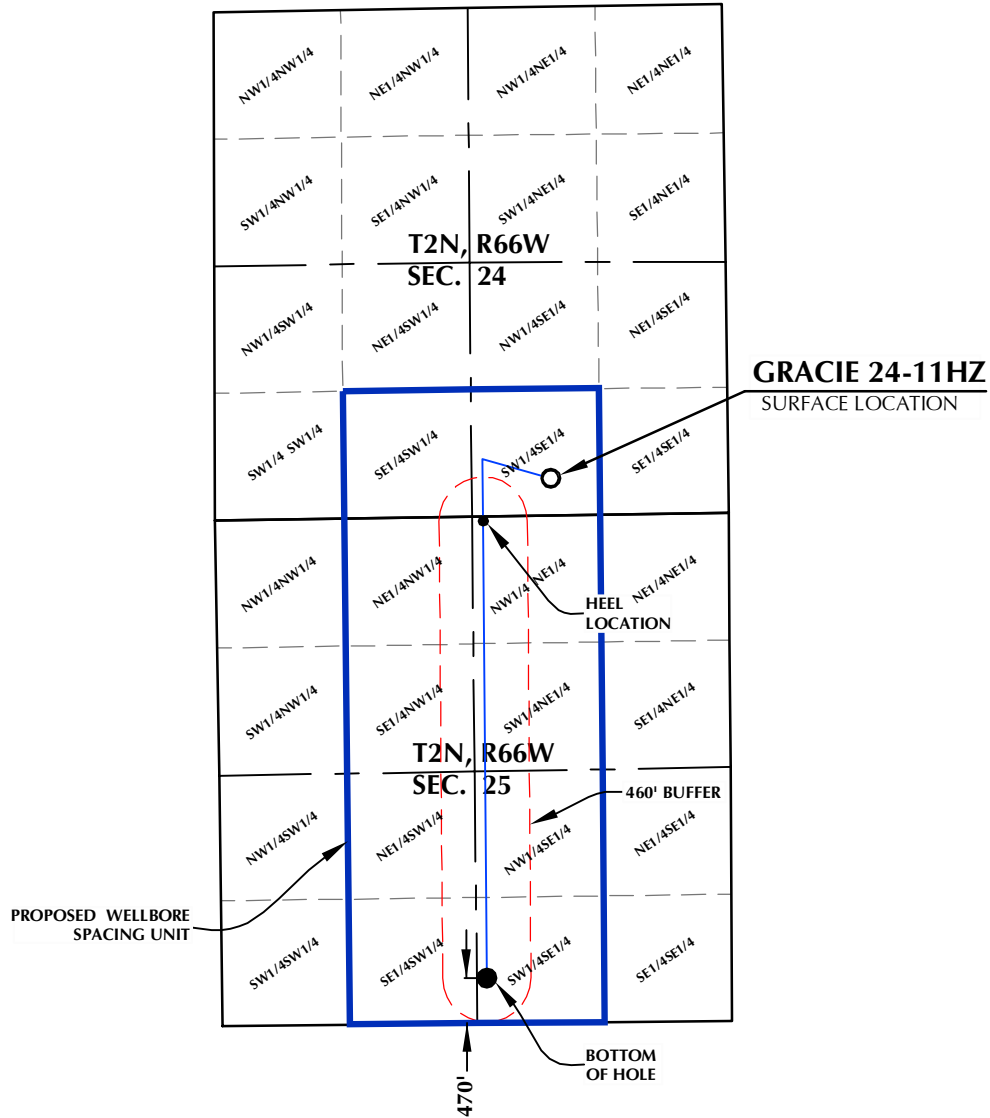
A handwritten signature in black ink, appearing to read 'John Piekara'.

John Piekara
Sr. Regulatory Analyst

Enclosure

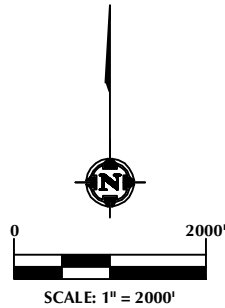
DISTANCE FROM COMPLETED
PORTION OF WELLBORE TO
NEAREST UNIT BOUNDARY= 470'

GRACIE 24-11HZ WELLBORE SPACING UNIT



NOTES:

1. DRAWING LATITUDE AND LONGITUDE COORDINATES ARE NAD 83 (2011)(EPOCH:2010)
2. ELEVATION BASED ON NAVD88 (GEOID12B)
3. BASIS OF BEARING DERIVED FROM COLORADO COORDINATE SYSTEM OF 1983 NORTH ZONE.
4. ALL MEASURED DISTANCES ARE GRID. COMBINED SCALE FACTOR: .99972279 CALCULATED FROM THE SE. CORNER OF SECTION 24, T2N, R66W



SURFACE LOCATION: NAD 83
GROUND ELEVATION= 5052.1'
LATITUDE= 40.117616°
LONGITUDE= -104.722461°
LATITUDE= 40°07'03.417"
LONGITUDE= -104°43'20.859"
HEEL LOCATION: NAD 83
LATITUDE= 40.116409°
LONGITUDE= -104.724987°
LATITUDE= 40°06'59.072"
LONGITUDE= -104°43'29.955"
BOTTOM HOLE LOCATION: NAD 83
LATITUDE= 40.103343°
LONGITUDE= -104.725002°
LATITUDE= 40°06'12.035"
LONGITUDE= -104°43'30.007"

WELL PAD - GRACIE 24-12HZ

GRACIE 24-11HZ
WELLBORE SPACING UNIT
386' FSL & 1849' FEL SWSE (SURFACE)
LOCATED IN SECTION 24
50' FNL & 2557' FEL NWNE (HEEL)
470' FSL & 2554' FEL SWSE (BOTTOM)
LOCATED IN SECTION 25
T2N, R66W, 6TH P.M.
WELD COUNTY, COLORADO

**Kerr-McGee Oil &
Gas Onshore L.P.**
1099 18th Street
Denver, Colorado 80202



CONSULTING, LLC

SHERIDAN OFFICE
1095 Saberton Avenue
Sheridan, Wyoming 82801
Phone 307-674-0609

LOVELAND OFFICE
1635 Foxtrail Drive, Suite 204
Loveland, Colorado 80538
Phone 970-776-4331

DRAFTED BY:	LMO	CHECKED BY:	RKF
DATE DRAFTED:	9/25/17	DATE SURVEYED:	9/20/17
REVISED:		FILE NAME:	17-71