

T2N, R66W
25

GRACIE 24-11HZ
SURFACE LOCATION

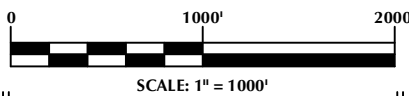
SURFACE LOCATION: NAD 83
GROUND ELEVATION= 5052.1'
LATITUDE= 40.117616°
LONGITUDE= -104.722461°
LATITUDE= 40°07'03.417"
LONGITUDE= -104°43'20.859"
HEEL LOCATION: NAD 83
LATITUDE= 40.116409°
LONGITUDE= -104.724987°
LATITUDE= 40°06'59.072"
LONGITUDE= -104°43'29.955"
BOTTOM HOLE LOCATION: NAD 83
LATITUDE= 40.103343°
LONGITUDE= -104.725002°
LATITUDE= 40°06'12.035"
LONGITUDE= -104°43'30.007"

CERTIFICATE OF SURVEYOR:

THIS IS TO CERTIFY THAT THE ABOVE PLAT WAS PREPARED FROM FIELD NOTES OF ACTUAL SURVEYS MADE BY ME OR UNDER MY SUPERVISION AND THAT THE SAME ARE TRUE AND CORRECT TO THE BEST OF MY KNOWLEDGE AND BELIEF. THIS CERTIFICATE DOES NOT REPRESENT A LAND SURVEY PLAT OR IMPROVEMENT SURVEY PLAT AS DEFINED BY C.R.S. 38-50-102 AND CANNOT BE RELIED UPON TO DETERMINE OWNERSHIP.

Randall K. French
PROFESSIONAL LAND SURVEYOR
38512
9/25/17
RANDALL K. FRENCH
PROFESSIONAL LAND SURVEYOR
COLORADO REGISTRATION NUMBER 38512

NOTE:
MAGNETIC NORTH IS CURRENT AS OF 9/20/2017.
MAGNETIC NORTH CHANGES WEST 0°06' PER YEAR.



NOTES:

- ▲ INDICATES SECTION CORNER
- INDICATES CALCULATED CORNER
- ELEVATION BASED ON NAVD88 (GEOID12B)
- BASIS OF BEARING DERIVED FROM COLORADO COORDINATE SYSTEM OF 1983 NORTH ZONE.
- ALL MEASURED DISTANCES ARE GRID.
COMBINED SCALE FACTOR: .99972279 CALCULATED FROM THE SE. CORNER OF SECTION 24, T2N, R66W
- OPERATOR: PRESTON KNUTSEN / PDOP = 1.3
- SEE ADDENDUM TO WELL LOCATION CERTIFICATE FOR EXISTING IMPROVEMENTS WITHIN 500' OF THE WELL PAD.
- WELL FOOTAGES ARE MEASURED AT RIGHT ANGLES TO THE SECTION LINES.
- THE BOTTOM OF HOLE BEARS S00°27'06"E, 4760' FROM THE HEEL LOCATION.

WELL PAD - GRACIE 24-12HZ

GRACIE 24-11HZ
WELL LOCATION CERTIFICATE
386' FSL & 1849' FEL SWSE (SURFACE)
LOCATED IN SECTION 24
50' FNL & 2557' FEL NWNE (HEEL)
470' FSL & 2554' FEL SWSE (BOTTOM)
LOCATED IN SECTION 25
T2N, R66W, 6TH P.M.
WELD COUNTY, COLORADO

**Kerr-McGee Oil &
Gas Onshore L.P.**
1099 18th Street
Denver, Colorado 80202



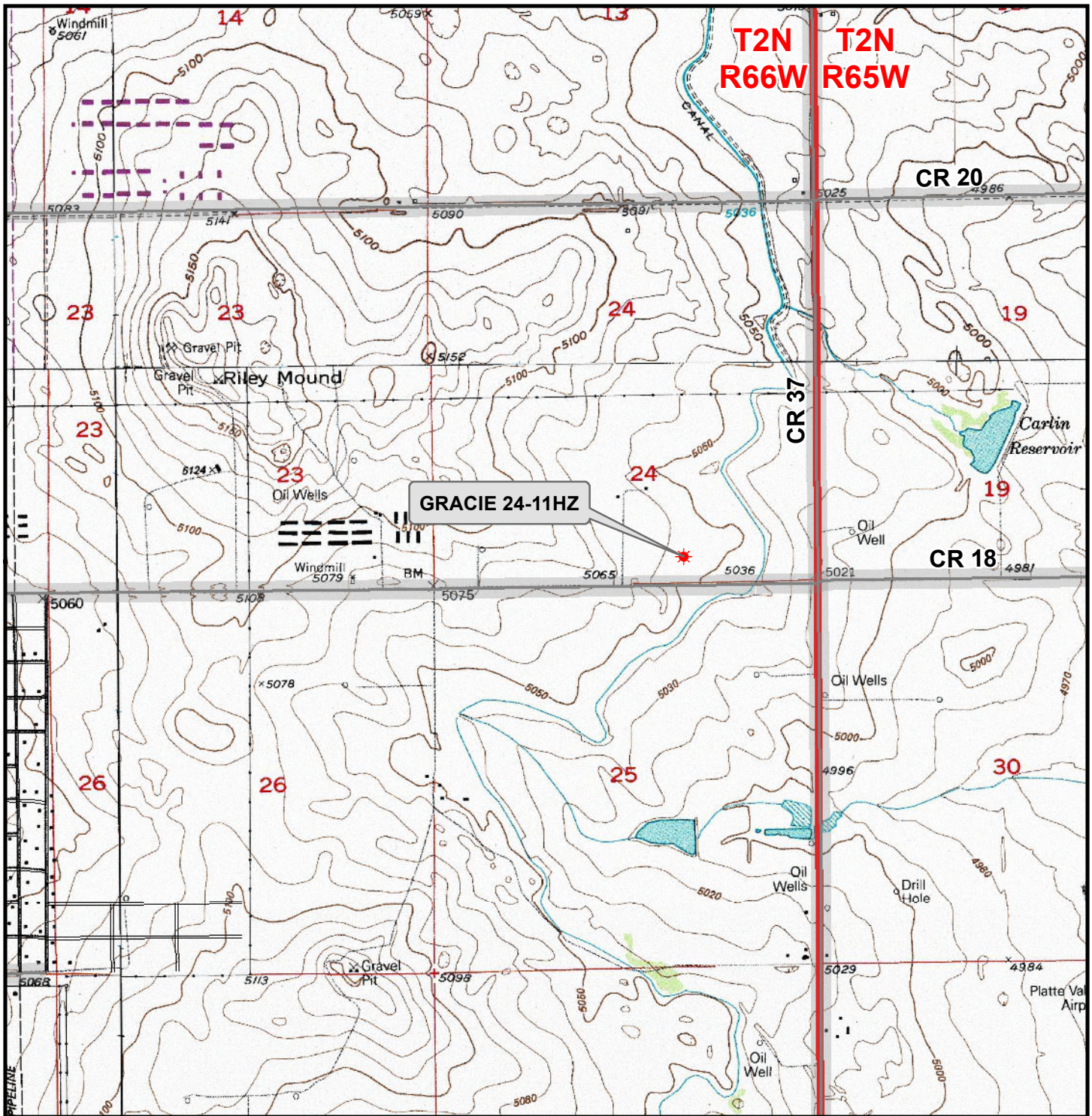
CONSULTING, LLC

SHERIDAN OFFICE
1095 Saberton Avenue
Sheridan, Wyoming 82801
Phone 307-674-0609

LOVELAND OFFICE
1635 Foxtrail Drive, Suite 204
Loveland, Colorado 80538
Phone 970-776-4331

DRAFTED BY:	LMO	CHECKED BY:	RKF
DATE DRAFTED:	9/25/17	DATE SURVEYED:	9/20/17
REVISED:		FILE NAME:	17-71

K:\ANADARKO\2017\2017_71_GRACIE_T2N_R66W_SEC_24\GIS\Maps_ABC\Gracie 24-12HZ\Gracie 24-11HZ.mxd 9/21/2017 4:26:14 PM



Legend

- Well - Fee - Proposed
- Road - Primitive - Existing
- Road - County - Existing
- Road - Improved - Existing
- Road - Highway - Existing

WELL PAD - GRACIE 24-12HZ
GENERAL LOCATION MAP
GRACIE 24-11HZ
 LOCATED IN SECTION 24
 T2N, R66W, 6th P.M.
WELD COUNTY, COLORADO

**Kerr-McGee Oil &
 Gas Onshore L.P.**
 1099 18th Street
 Denver, Colorado 80202



CONSULTING, LLC
 SHERIDAN OFFICE 1095 Saberton Avenue
 Sheridan, Wyoming 82801 Phone 307-674-0609
 LOVELAND OFFICE 1635 Foxtail Drive, Suite 204
 Loveland, Colorado 80538 Phone 970-776-4331



SCALE: 1" = 2,000ft

NAD83 CO-Nft

DRAWN: DP

DATE: 25 Sep 2017

REVISED:

DATE: