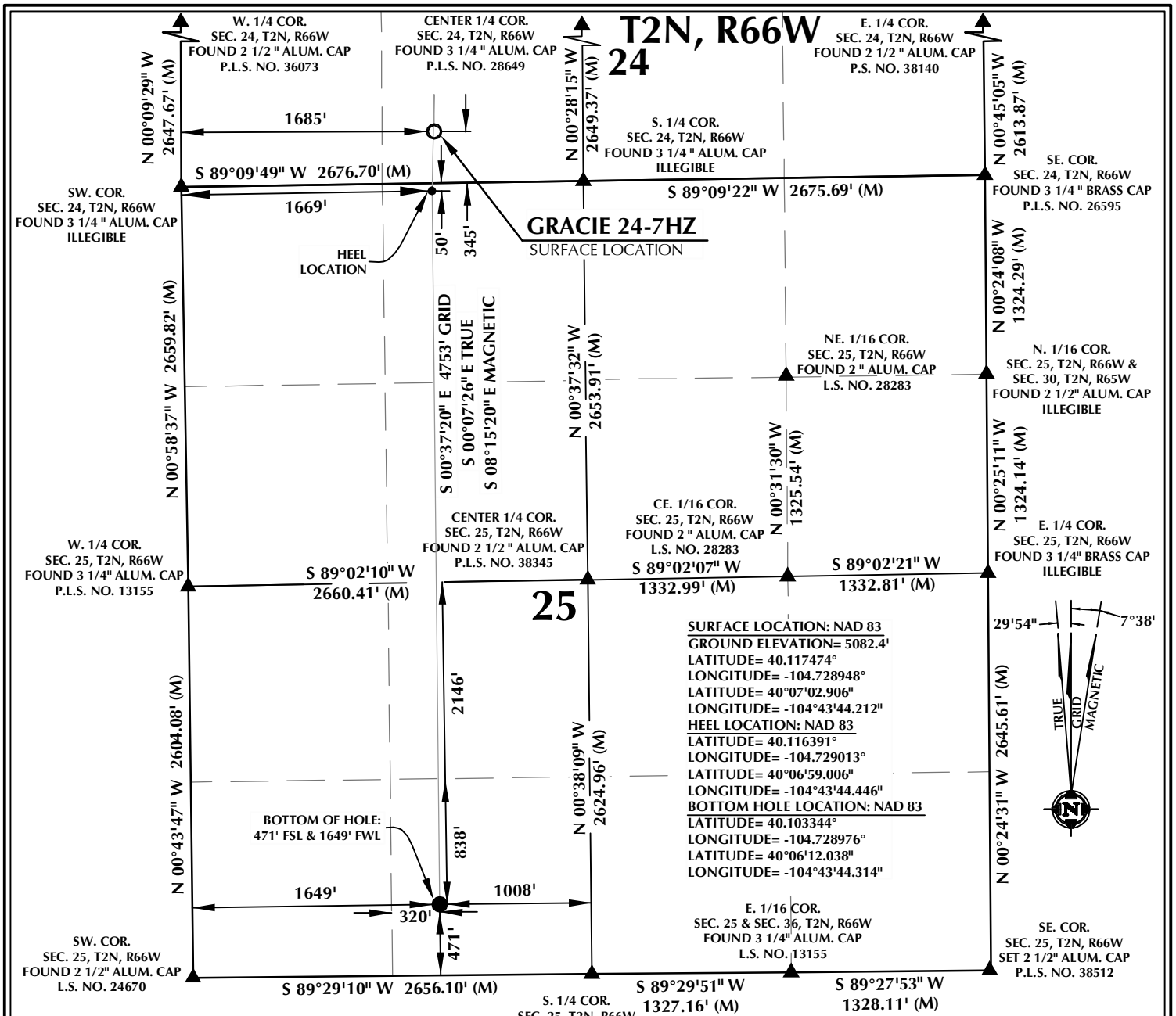


K:\AMADARCO\2017\71\_GRACIE\_T2N\_R66W\_SEC\_24\4-HZ\GRACIE\_24-4HZ\PLATS.dwg, 9/22/2017 1:53:47 PM, dregan



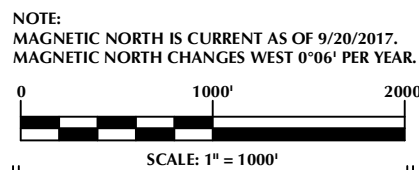
**SURFACE LOCATION: NAD 83**  
 GROUND ELEVATION= 5082.4'  
 LATITUDE= 40.117474°  
 LONGITUDE= -104.728948°  
 LATITUDE= 40°07'02.906"  
 LONGITUDE= -104°43'44.212"  
**HEEL LOCATION: NAD 83**  
 LATITUDE= 40.116391°  
 LONGITUDE= -104.729013°  
 LATITUDE= 40°06'59.006"  
 LONGITUDE= -104°43'44.446"  
**BOTTOM HOLE LOCATION: NAD 83**  
 LATITUDE= 40.103344°  
 LONGITUDE= -104.728976°  
 LATITUDE= 40°06'12.038"  
 LONGITUDE= -104°43'44.314"

**CERTIFICATE OF SURVEYOR:**

THIS IS TO CERTIFY THAT THE ABOVE PLAT WAS PREPARED FROM FIELD NOTES OF ACTUAL SURVEYS MADE BY ME OR UNDER MY SUPERVISION AND THAT THE SAID PLAT IS TRUE AND CORRECT TO THE BEST OF MY KNOWLEDGE AND BELIEF. THIS CERTIFICATE DOES NOT REPRESENT A LAND SURVEY THAT OR IMPROVEMENT SURVEY PLAT AS DEFINED BY C.R.S. 38-5-102 AND CANNOT BE RELIED UPON TO DETERMINE OWNERSHIP.

*Randall K. French*  
 RANDALL K. FRENCH  
 PROFESSIONAL LAND SURVEYOR  
 COLORADO REGISTRATION NUMBER 38512  
 9/22/17

**NOTICE:**  
 ACCORDING TO COLORADO STATE LAW YOU MUST COMMENCE LEGAL ACTION BASED UPON ANY DEFECT IN THIS SURVEY WITHIN THREE YEARS AFTER YOU FIRST DISCOVER SUCH DEFECT. IN NO EVENT MAY ANY ACTION BASED UPON ANY DEFECT IN THIS SURVEY BE COMMENCED MORE THAN TEN YEARS FROM THE DATE ON THE CERTIFICATION SHOWN HEREON.



**NOTES:**

- ▲ INDICATES SECTION CORNER
- INDICATES CALCULATED CORNER
- ELEVATION BASED ON NAVD88 (GEOID12B)
- BASIS OF BEARING DERIVED FROM COLORADO COORDINATE SYSTEM OF 1983 NORTH ZONE.
- ALL MEASURED DISTANCES ARE GRID.  
COMBINED SCALE FACTOR: .99972279 CALCULATED FROM THE SE. CORNER OF SECTION 24, T2N, R66W
- OPERATOR: PRESTON KNUTSEN / PDOP = 1.7
- SEE ADDENDUM TO WELL LOCATION CERTIFICATE FOR EXISTING IMPROVEMENTS WITHIN 500' OF THE WELL PAD.
- WELL FOOTAGES ARE MEASURED AT RIGHT ANGLES TO THE SECTION LINES.
- THE BOTTOM OF HOLE BEARS S00°37'20"E, 4753' FROM THE HEEL LOCATION.

**WELL PAD - GRACIE 24-4HZ**

GRACIE 24-7HZ  
 WELL LOCATION CERTIFICATE  
 345' FSL & 1685' FWL SESW (SURFACE)  
 LOCATED IN SECTION 24  
 50' FNL & 1669' FWL NENW (HEEL)  
 471' FSL & 1649' FWL SESW (BOTTOM)  
 LOCATED IN SECTION 25  
 T2N, R66W, 6TH P.M.  
 WELD COUNTY, COLORADO

**Kerr-McGee Oil & Gas Onshore L.P.**  
 1099 18th Street  
 Denver, Colorado 80202



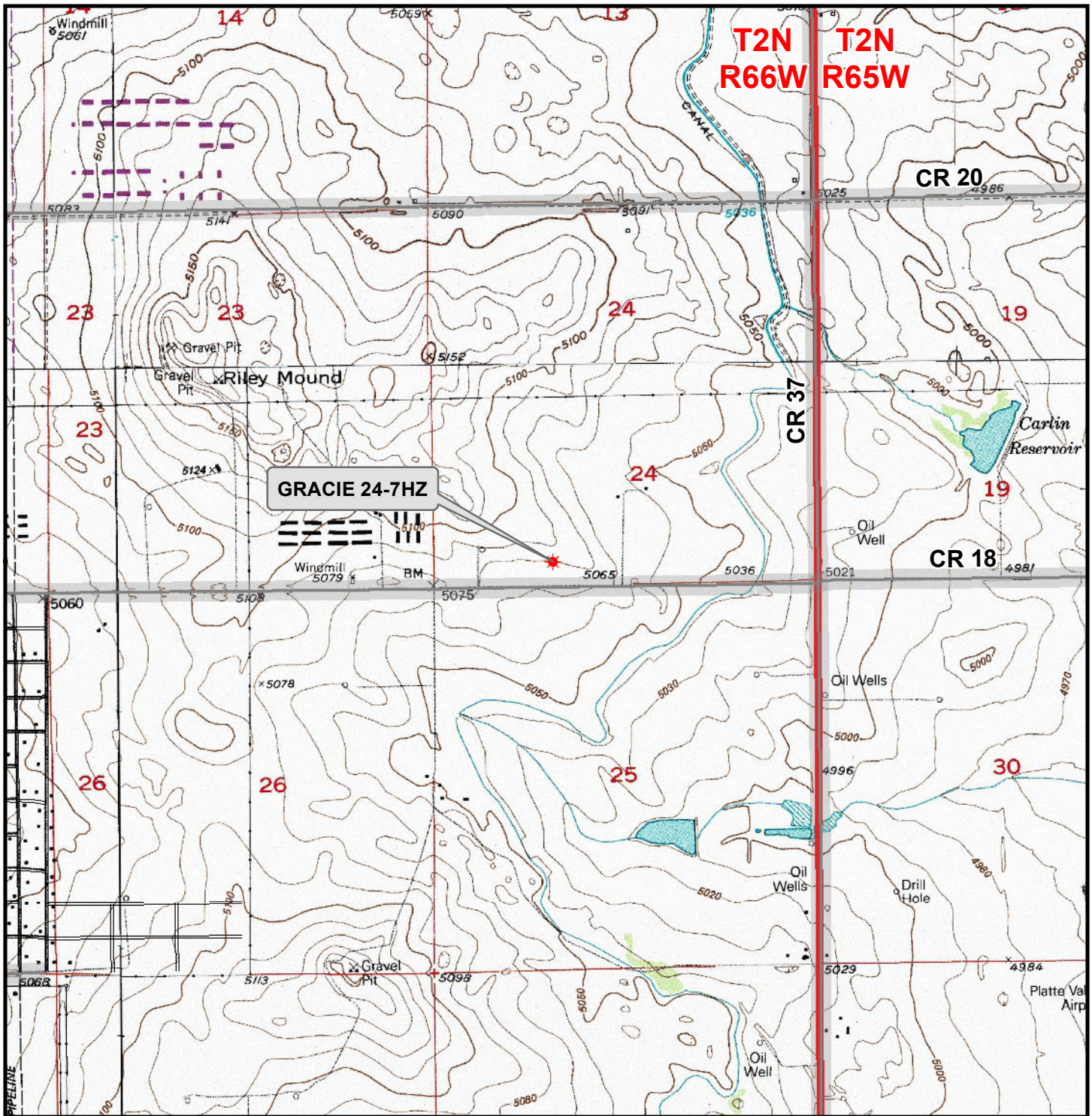
**CONSULTING, LLC**

**SHERIDAN OFFICE**  
 1095 Saberton Avenue  
 Sheridan, Wyoming 82801  
 Phone 307-674-0609

**LOVELAND OFFICE**  
 1635 Foxtrail Drive, Suite 204  
 Loveland, Colorado 80538  
 Phone 970-776-4331

DRAFTED BY:	LMO	CHECKED BY:	RKF
DATE DRAFTED:	9/22/17	DATE SURVEYED:	9/20/17
REVISED:		FILE NAME:	17-71

K:\ANADARKO\2017\2017\_71\_GRACIE\_T2N\_R66W\_SEC\_24\GIS\Maps\_ABC\Gracie 24-4HZ\Gracie 24-7HZ.mxd 9/20/2017 4:27:34 PM



**Legend**

- Well - Fee - Proposed
- Road - Primitive - Existing
- Road - County - Existing
- Road - Improved - Existing
- Road - Highway - Existing

**WELL PAD - GRACIE 24-4HZ  
GENERAL LOCATION MAP  
GRACIE 24-7HZ  
LOCATED IN SECTION 24  
T2N, R66W, 6th P.M.  
WELD COUNTY, COLORADO**

**Kerr-McGee Oil &  
Gas Onshore L.P.**

1099 18th Street  
Denver, Colorado 80202



**CONSULTING, LLC**  
SHERIDAN OFFICE 1095 Saberton Avenue  
Sheridan, Wyoming 82801  
Phone 307-674-0609  
LOVELAND OFFICE 1635 Foxtail Drive, Suite 204  
Loveland, Colorado 80538  
Phone 970-776-4331



SCALE: 1" = 2,000ft

NAD83 CO-Nft

DRAWN: DP

DATE: 22 Sep 2017

REVISED:

DATE: