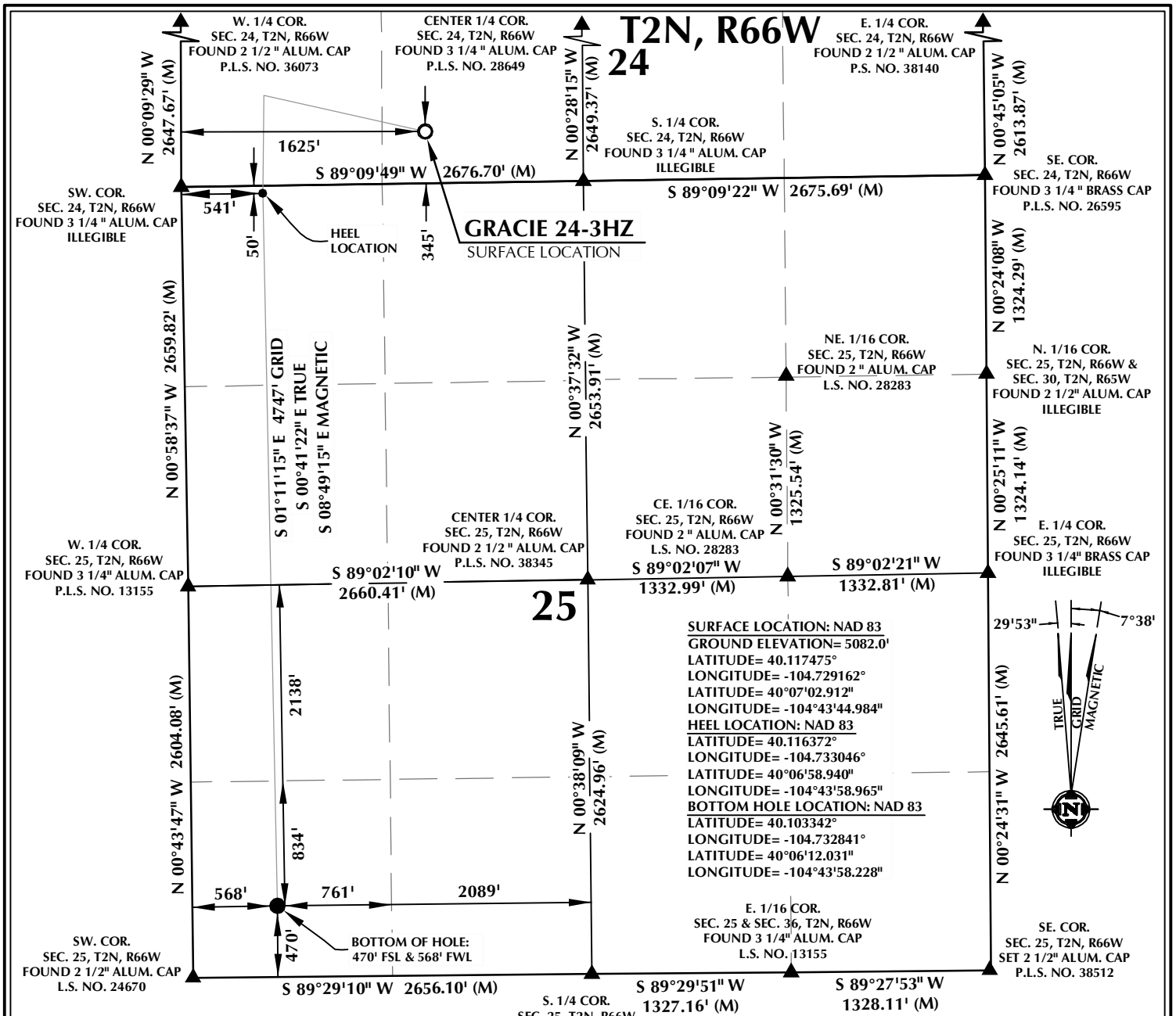


K:\AMARCO\2017\71-GRACIE_T2N_R66W_SEC_24-4HZ\GRACIE_24-4HZ\PLATS.dwg, 9/22/2017 1:52:26 PM, dregan



SURFACE LOCATION: NAD 83
 GROUND ELEVATION= 5082.0'
 LATITUDE= 40.117475°
 LONGITUDE= -104.729162°
HEEL LOCATION: NAD 83
 LATITUDE= 40.116372°
 LONGITUDE= -104.733046°
BOTTOM HOLE LOCATION: NAD 83
 LATITUDE= 40.103342°
 LONGITUDE= -104.732841°
 LATITUDE= 40°06'12.031"
 LONGITUDE= -104°43'58.228"

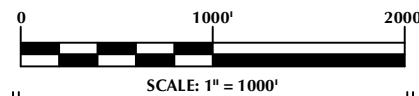
CERTIFICATE OF SURVEYOR:

THIS IS TO CERTIFY THAT THE ABOVE PLAT WAS PREPARED FROM FIELD NOTES OF ACTUAL SURVEYS MADE BY ME OR UNDER MY SUPERVISION AND THAT THE SAID PLAT IS TRUE AND CORRECT TO THE BEST OF MY KNOWLEDGE AND BELIEF. THIS CERTIFICATE DOES NOT REPRESENT A LAND SURVEY THAT OR IMPROVEMENT SURVEY PLAT AS DEFINED BY C.R.S. 38-5-102 AND CANNOT BE RELIED UPON TO DETERMINE OWNERSHIP.

Randall K. French
PROFESSIONAL LAND SURVEYOR
 38512
 9/22/17
 RANDALL K. FRENCH
 PROFESSIONAL LAND SURVEYOR
 COLORADO REGISTRATION NUMBER 38512

NOTICE:
 ACCORDING TO COLORADO STATE LAW YOU MUST COMMENCE LEGAL ACTION BASED UPON ANY DEFECT IN THIS SURVEY WITHIN THREE YEARS AFTER YOU FIRST DISCOVER SUCH DEFECT. IN NO EVENT MAY ANY ACTION BASED UPON ANY DEFECT IN THIS SURVEY BE COMMENCED MORE THAN TEN YEARS FROM THE DATE ON THE CERTIFICATION SHOWN HEREON.

NOTE:
 MAGNETIC NORTH IS CURRENT AS OF 9/20/2017.
 MAGNETIC NORTH CHANGES WEST 0°06' PER YEAR.



NOTES:

- ▲ INDICATES SECTION CORNER
- INDICATES CALCULATED CORNER
- ELEVATION BASED ON NAVD88 (GEOID12B)
- BASIS OF BEARING DERIVED FROM COLORADO COORDINATE SYSTEM OF 1983 NORTH ZONE.
- ALL MEASURED DISTANCES ARE GRID.
COMBINED SCALE FACTOR: .99972279 CALCULATED FROM THE SE. CORNER OF SECTION 24, T2N, R66W
- OPERATOR: PRESTON KNUTSEN / PDOP = 1.7
- SEE ADDENDUM TO WELL LOCATION CERTIFICATE FOR EXISTING IMPROVEMENTS WITHIN 500' OF THE WELL PAD.
- WELL FOOTAGES ARE MEASURED AT RIGHT ANGLES TO THE SECTION LINES.
- THE BOTTOM OF HOLE BEARS S01°11'15"E, 4747' FROM THE HEEL LOCATION.

WELL PAD - GRACIE 24-4HZ

GRACIE 24-3HZ WELL LOCATION CERTIFICATE
 345' FSL & 1625' FWL SESW (SURFACE)
 LOCATED IN SECTION 24
 50' FNL & 541' FWL NWNW (HEEL)
 470' FSL & 568' FWL SWSW (BOTTOM)
 LOCATED IN SECTION 25
 T2N, R66W, 6TH P.M.
 WELD COUNTY, COLORADO

Kerr-McGee Oil & Gas Onshore L.P.
 1099 18th Street
 Denver, Colorado 80202



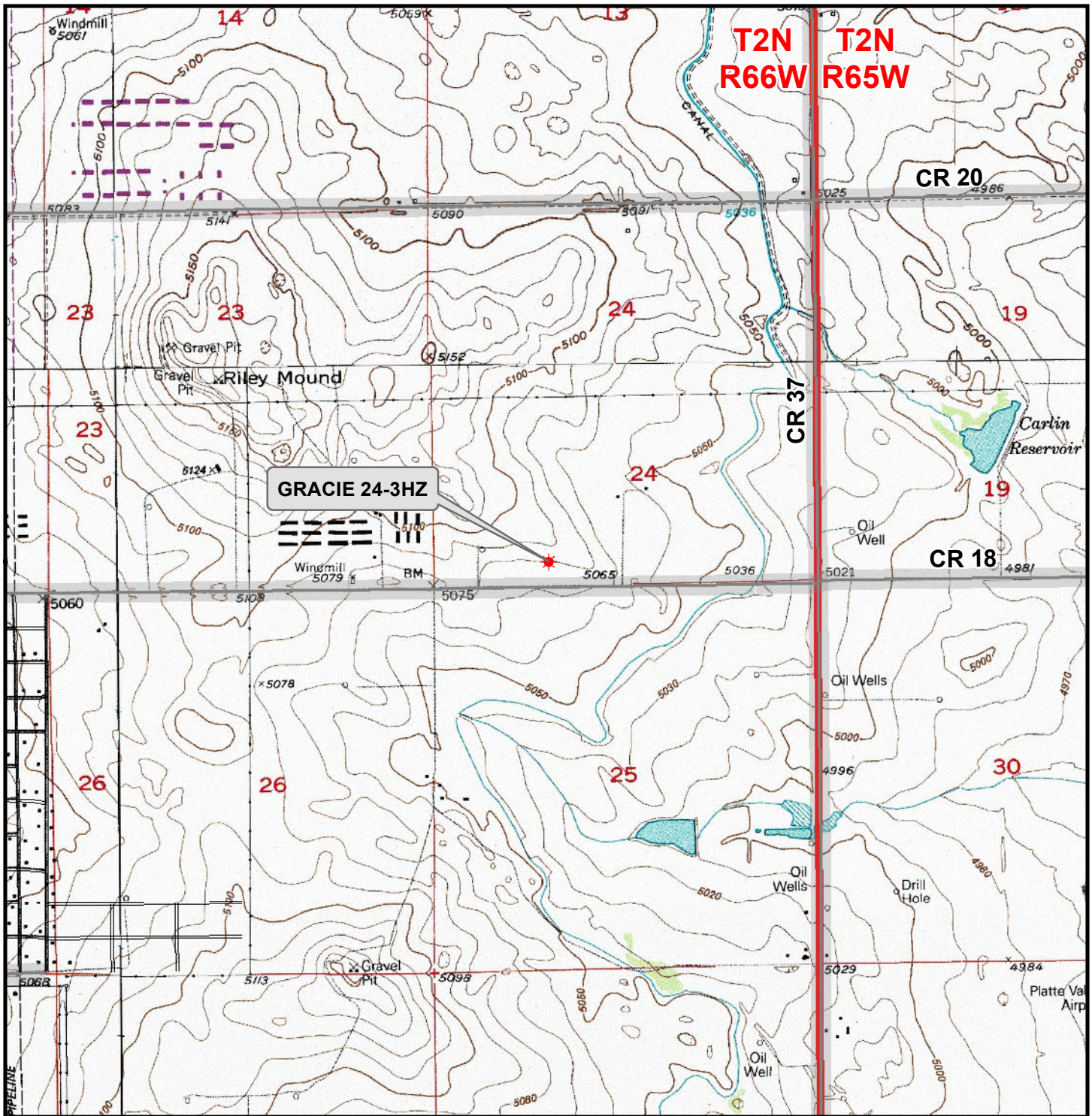
CONSULTING, LLC

SHERIDAN OFFICE
 1095 Saberton Avenue
 Sheridan, Wyoming 82801
 Phone 307-674-0609

LOVELAND OFFICE
 1635 Foxtrail Drive, Suite 204
 Loveland, Colorado 80538
 Phone 970-776-4331

DRAFTED BY:	LMO	CHECKED BY:	RKF
DATE DRAFTED:	9/22/17	DATE SURVEYED:	9/20/17
REVISED:		FILE NAME:	17-71

K:\ANADARKO\2017\2017_71_GRACIE_T2N_R66W_SEC_24\GIS\Maps_ABC\Gracie 24-4HZ\Gracie 24-3HZ.mxd 9/20/2017 4:22:51 PM



Legend

- ★ Well - Fee - Proposed
- ==== Road - Primitive - Existing
- Road - County - Existing
- Road - Improved - Existing
- Road - Highway - Existing

WELL PAD - GRACIE 24-4HZ
GENERAL LOCATION MAP
GRACIE 24-3HZ
LOCATED IN SECTION 24
T2N, R66W, 6th P.M.
WELD COUNTY, COLORADO

Kerr-McGee Oil & Gas Onshore L.P.

1099 18th Street
 Denver, Colorado 80202



CONSULTING, LLC
 SHERIDAN OFFICE 1095 Saberton Avenue Sheridan, Wyoming 82801 Phone 307-674-0609
 LOVELAND OFFICE 1635 Foxtail Drive, Suite 204 Loveland, Colorado 80538 Phone 970-776-4331

SCALE: 1" = 2,000ft

NAD83 CO-Nft

DRAWN: DP

DATE: 22 Sep 2017

REVISED:

DATE:

