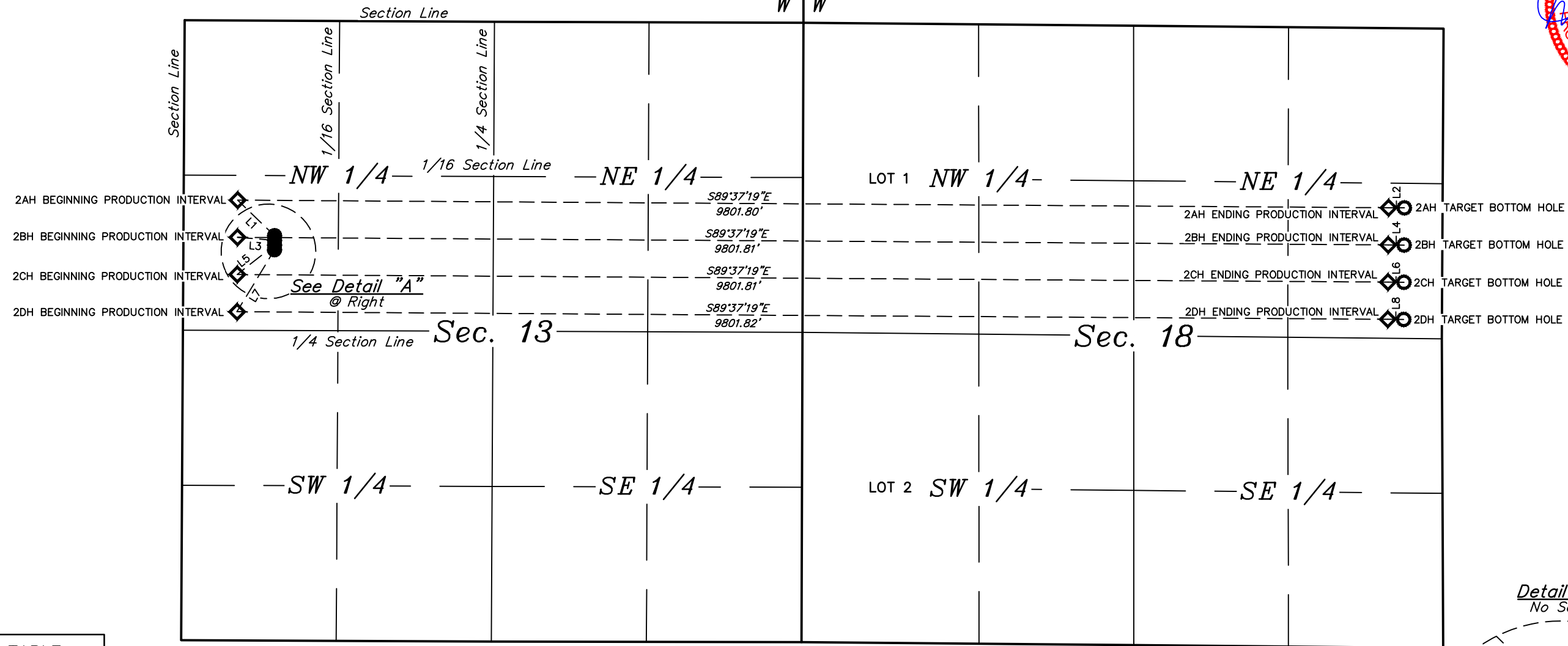




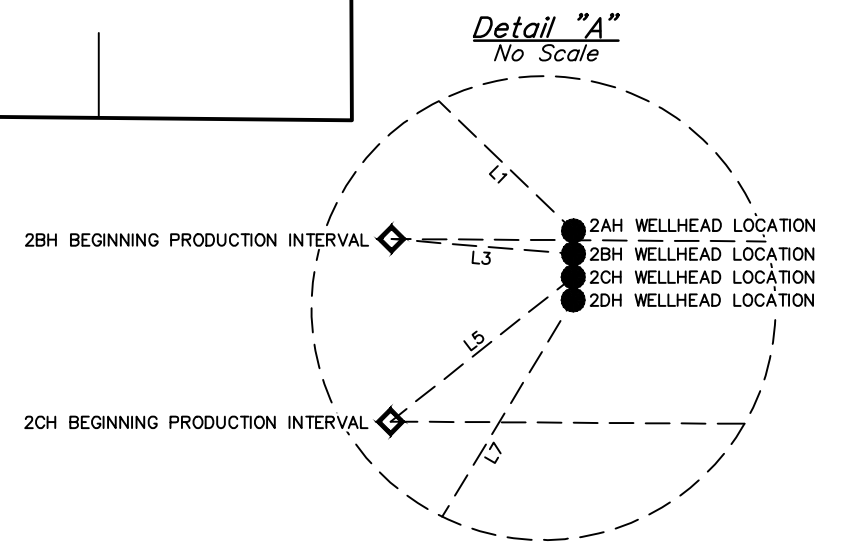
**LEGEND:**

- = WELLHEAD LOCATION.
- = TARGET BOTTOM HOLE.
- ◇ = PRODUCTION INTERVAL.

R R  
65 64  
W W



LINE TABLE		
LINE	DIRECTION	LENGTH
L1	N46°03'26"W	436.49'
L2	S89°28'36"E	135.00'
L3	N85°19'28"W	316.95'
L4	S89°28'36"E	135.00'
L5	S51°39'30"W	404.81'
L6	S89°28'36"E	135.00'
L7	S31°08'24"W	617.03'
L8	S89°28'36"E	135.00'



REV: 1 10-03-17 J.J. (EPI & BHL CHANGE)

**ConocoPhillips Company**

**LEFT HAND #3-65 13-18 2AH, 2BH, 2CH & 2DH  
SW 1/4 NW 1/4, SECTION 13, T3S, R65W, 6th P.M.  
ADAMS COUNTY, COLORADO**

SURVEYED BY	CHAD MEIERS	09-13-17	SCALE
DRAWN BY	K.B.	09-21-17	1" = 1000'
<b>MULTI-WELL PLAN</b>		<b>FIGURE #4</b>	