

**LEGEND:**

 PROPOSED LOCATION



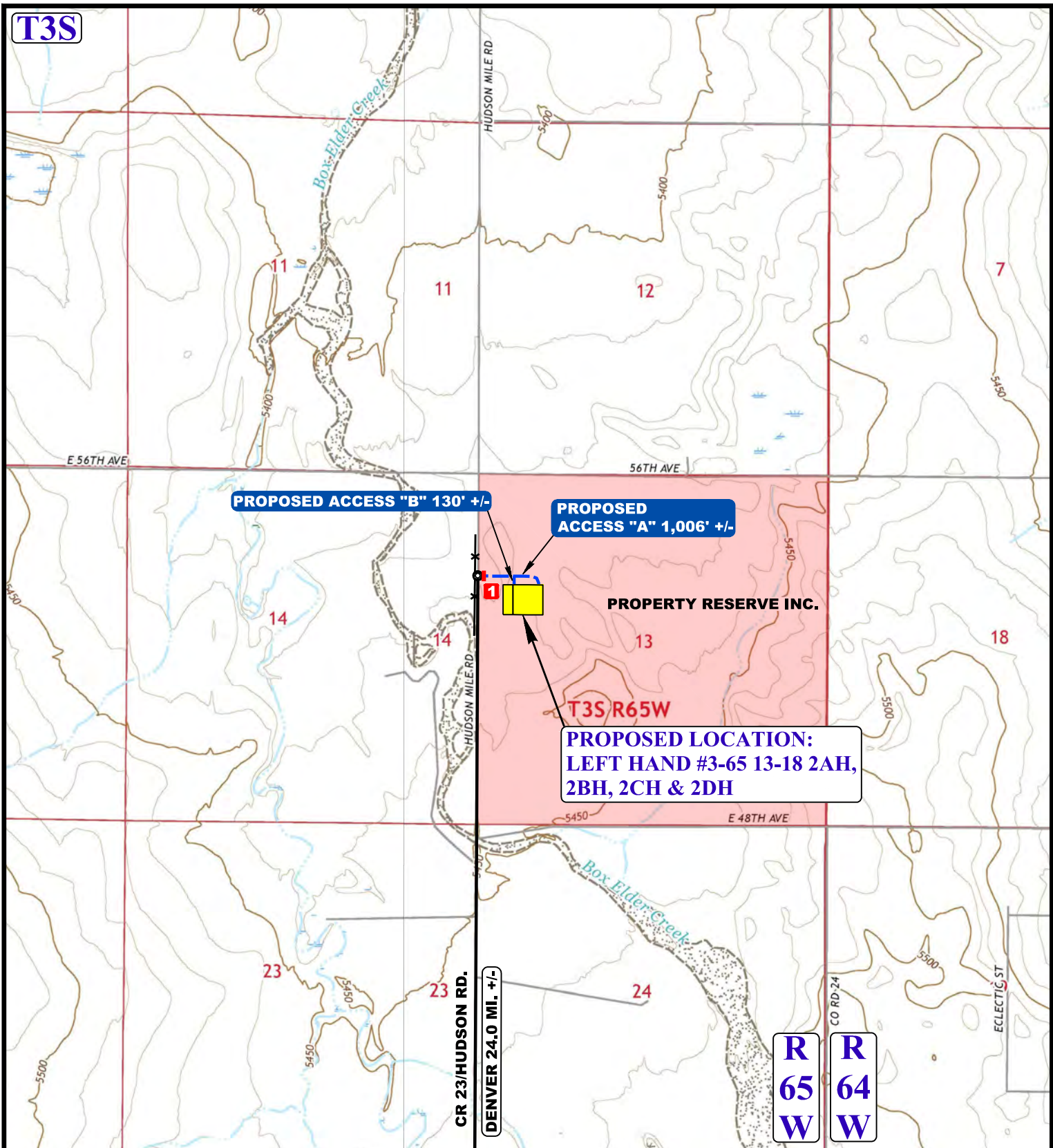
**ConocoPhillips Company**

LEFT HAND #3-65 13-18 2AH, 2BH, 2CH & 2DH  
 SW 1/4 NW 1/4, SECTION 13, T3S, R65W, 6th P.M.  
 ADAMS COUNTY, COLORADO


SURVEYED BY	C.M.	09-13-17	SCALE
DRAWN BY	J.L.G.	09-19-17	1 : 100,000
<b>ACCESS ROAD MAP</b>			<b>TOPO A</b>



**UELS, LLC**  
 Corporate Office \* 85 South 200 East  
 Vernal, UT 84078 \* (435) 789-1017



NOTE: PARCEL DATA SHOWN HAS BEEN OBTAINED FROM VARIOUS SOURCES AND SHOULD BE USED FOR MAPPING, GRAPHIC AND PLANNING PURPOSES ONLY. NO WARRANTY IS MADE BY UINTAH ENGINEERING AND LAND SURVEYING (UELS) FOR ACCURACY OF THE PARCEL DATA.

<b>LEGEND:</b>		<b>1</b> INSTALL 18" CULVERT				<b>ConocoPhillips Company</b> LEFT HAND #3-65 13-18 2AH, 2BH, 2CH & 2DH SW 1/4 NW 1/4, SECTION 13, T3S, R65W, 6th P.M. ADAMS COUNTY, COLORADO													
—	EXISTING ROAD																		
- - -	PROPOSED ROAD			<table border="1"> <tr> <td>SURVEYED BY</td> <td>C.M.</td> <td>09-13-17</td> <td>SCALE</td> </tr> <tr> <td>DRAWN BY</td> <td>J.L.G.</td> <td>09-19-17</td> <td>1 : 24,000</td> </tr> </table>		SURVEYED BY	C.M.	09-13-17	SCALE	DRAWN BY	J.L.G.	09-19-17	1 : 24,000	<table border="1"> <tr> <td colspan="2"><b>ACCESS ROAD MAP</b></td> <td colspan="2"><b>TOPO B</b></td> </tr> </table>		<b>ACCESS ROAD MAP</b>		<b>TOPO B</b>	
SURVEYED BY	C.M.	09-13-17	SCALE																
DRAWN BY	J.L.G.	09-19-17	1 : 24,000																
<b>ACCESS ROAD MAP</b>		<b>TOPO B</b>																	



**UELS, LLC**  
 Corporate Office \* 85 South 200 East  
 Vernal, UT 84078 \* (435) 789-1017