

US ROCKIES WATTENBERG PLANNING

**WELD-NAD83-UTMFT13N
2N-65W-25 Zelda 29-25HZ Pad
ZELDA 25-11HZ**

Plan A

Plan: Permit Rev-1

SHL Latitude/Longitude: 40.115727/-104.617064
Survey Program: MWD+IFR

Standard Planning Report

21 August, 2017

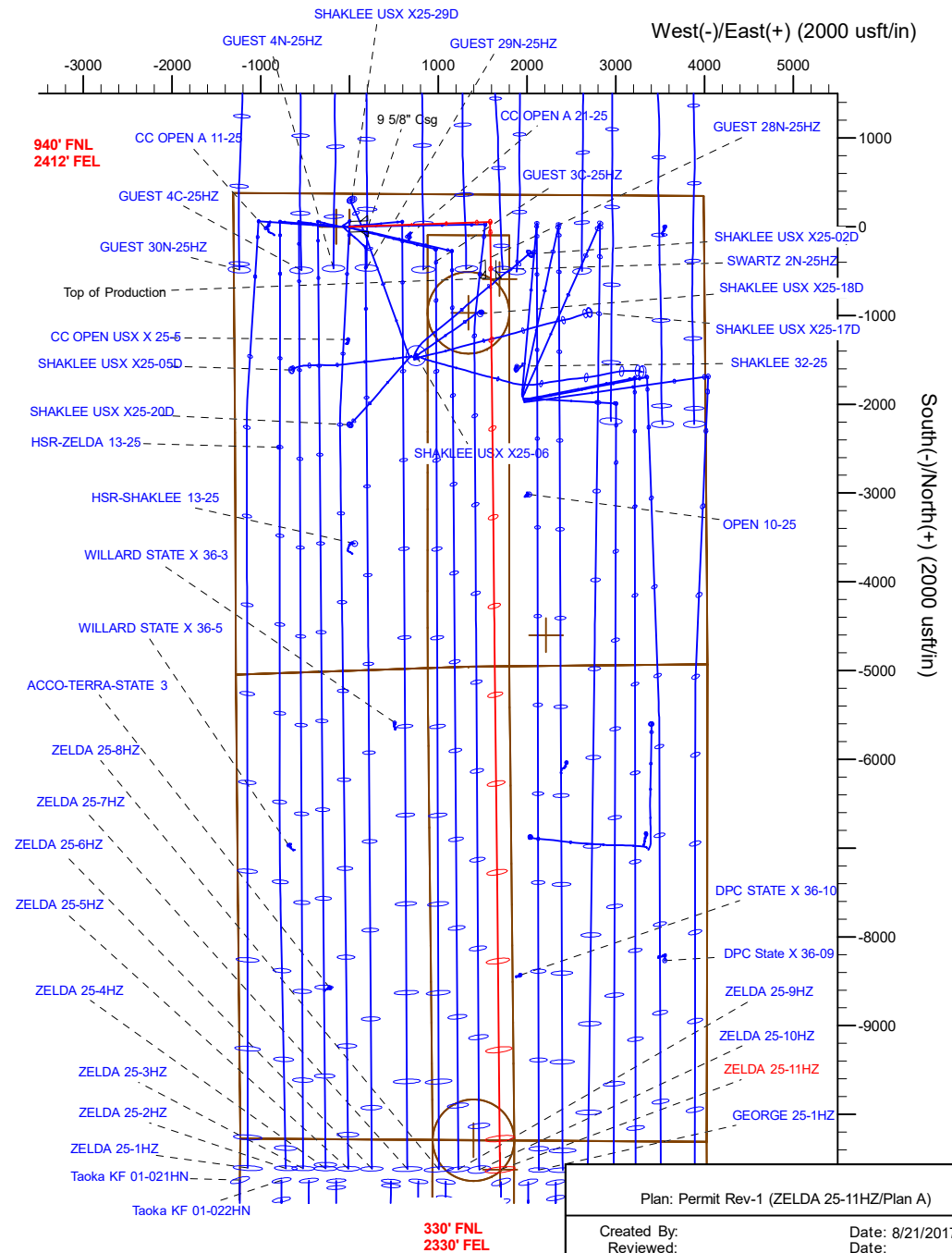
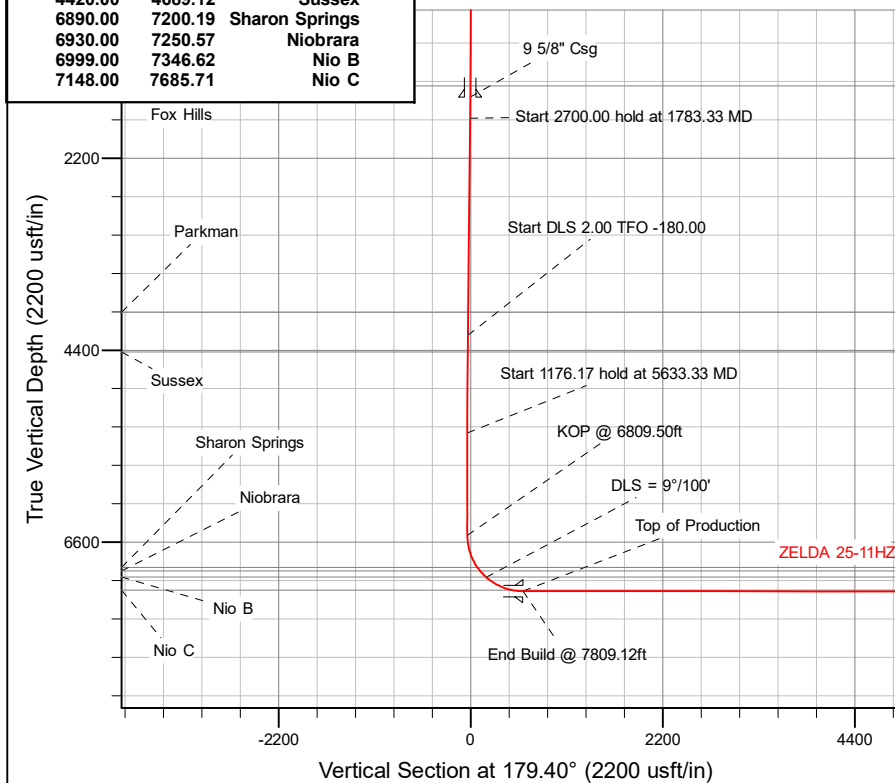
US ROCKIES WATTENBERG PLANNING

CASING DETAILS			WELL DETAILS: ZELDA 25-11HZ GL = 4903' RKB = 17' @ 4920.00usft (Drilling Rig)
TVD	MD	Size	
1500.00	1523.46	9-5/8	
7160.00	7809.12	5-1/2	

SECTION DETAILS										
Sec	MD	Inc	Azi	TVD	+N-S	+E-W	Dleg	TFace	VSect	Target
1	0.00	0.00	0.00	0.00	0.00	0.00	0.00	0.00	0.00	
2	250.00	0.00	0.00	250.00	0.00	0.00	0.00	0.00	0.00	
3	1783.33	23.00	88.00	1742.48	10.60	303.46	1.50	88.00	-7.42	
4	4483.33	23.00	88.00	4227.85	47.42	1357.80	0.00	0.00	-33.19	
5	5633.33	0.00	0.00	5347.21	55.36	1585.39	2.00	-180.00	-38.76	
6	6809.50	0.00	0.00	6523.38	55.36	1585.39	0.00	0.00	-38.76	
7	7809.12	89.97	179.40	7160.00	-580.84	1592.05	9.00	179.40	597.48	
8	17851.54	89.97	179.40	7166.00	-10622.71	1697.13	0.00	0.00	10639.90	ZELDA 25-11HZ_BHL

WELLBORE TARGET DETAILS (LAT/LONG)					
Name	TVD	+N/-S	+E/-W	Latitude	Longitude
ZELDA 25-11HZ_SHL	0.00	0.00	0.00	40.115727	-104.617064
ZELDA 25-11HZ_BHL	7166.00	-10622.71	1697.13	40.086556	-104.610996

FORMATION TOP DETAILS		
TVDP	Path	Formation
1372.00	1388.80	Fox Hills
3967.00	4199.96	Parkman
4420.00	4689.12	Sussex
6890.00	7200.19	Sharon Springs
6930.00	7250.57	Niobrara
6999.00	7346.62	Nio B
7148.00	7685.71	Nio C



Corporate Planning Report

Database:	PLANNING	Local Co-ordinate Reference:	Well ZELDA 25-11HZ
Company:	US ROCKIES WATTENBERG PLANNING	TVD Reference:	RKB = 17' @ 4920.00usft (Drilling Rig)
Project:	WELD-NAD83-UTMFT13N	MD Reference:	RKB = 17' @ 4920.00usft (Drilling Rig)
Site:	2N-65W-25 Zelda 29-25HZ Pad	North Reference:	True
Well:	ZELDA 25-11HZ	Survey Calculation Method:	Minimum Curvature
Wellbore:	Plan A		
Design:	Permit Rev-1		

Project	WELD-NAD83-UTMFT13N		
Map System:	Universal Transverse Mercator (US Survey Feet)	System Datum:	Mean Sea Level
Geo Datum:	North American Datum 1983		
Map Zone:	Zone 13N (108 W to 102 W)		

Site	2N-65W-25 Zelda 29-25HZ Pad				
Site Position:		Northing:	14,569,106.11 usft	Latitude:	40.115731
From:	Lat/Long	Easting:	1,747,327.27 usft	Longitude:	-104.617600
Position Uncertainty:	0.00 usft	Slot Radius:	13-3/16 "	Grid Convergence:	0.25

Well	ZELDA 25-11HZ					
Well Position	+N-S	-1.46 usft	Northing:	14,569,105.29 usft	Latitude:	40.115727
	+E-W	149.86 usft	Easting:	1,747,477.13 usft	Longitude:	-104.617064
Position Uncertainty		3.28 usft	Wellhead Elevation:		Ground Level:	4,903.00 usft

Wellbore	Plan A				
Magnetics	Model Name	Sample Date	Declination (°)	Dip Angle (°)	Field Strength (nT)
	IGRF2010	8/16/2017	7.93	66.63	52,347.26477496

Design	Permit Rev-1				
Audit Notes:					
Version:		Phase:	PLAN	Tie On Depth:	0.00
Vertical Section:	Depth From (TVD) (usft)	+N/-S (usft)	+E/-W (usft)	Direction (°)	
	0.00	0.00	0.00	179.40	

Plan Survey Tool Program		Date	8/21/2017		
Depth From (usft)	Depth To (usft)	Survey (Wellbore)	Tool Name	Remarks	
1	0.00	1,500.00	Permit Rev-1 (Plan A)	APC_ISCWSA REV 2 MWD+II Fixed:v2:crustal field declinatio	
2	1,500.00	17,851.54	Permit Rev-1 (Plan A)	APC_ISCWSA REV 2 MWD+II Fixed:v2:crustal field declinatio	

Corporate Planning Report

Database:	PLANNING	Local Co-ordinate Reference:	Well ZELDA 25-11HZ
Company:	US ROCKIES WATTENBERG PLANNING	TVD Reference:	RKB = 17' @ 4920.00usft (Drilling Rig)
Project:	WELD-NAD83-UTMFT13N	MD Reference:	RKB = 17' @ 4920.00usft (Drilling Rig)
Site:	2N-65W-25 Zelda 29-25HZ Pad	North Reference:	True
Well:	ZELDA 25-11HZ	Survey Calculation Method:	Minimum Curvature
Wellbore:	Plan A		
Design:	Permit Rev-1		

Plan Sections										
Measured Depth (usft)	Inclination (°)	Azimuth (°)	Vertical Depth (usft)	+N/-S (usft)	+E/-W (usft)	Dogleg Rate (°/100usft)	Build Rate (°/100usft)	Turn Rate (°/100usft)	TFO (°)	Target
0.00	0.00	0.00	0.00	0.00	0.00	0.00	0.00	0.00	0.00	
250.00	0.00	0.00	250.00	0.00	0.00	0.00	0.00	0.00	0.00	
1,783.33	23.00	88.00	1,742.48	10.60	303.46	1.50	1.50	0.00	88.00	
4,483.33	23.00	88.00	4,227.85	47.42	1,357.80	0.00	0.00	0.00	0.00	
5,633.33	0.00	0.00	5,347.21	55.36	1,585.39	2.00	-2.00	-7.65	-180.00	
6,809.50	0.00	0.00	6,523.38	55.36	1,585.39	0.00	0.00	0.00	0.00	
7,809.12	89.97	179.40	7,160.00	-580.84	1,592.05	9.00	9.00	17.95	179.40	
17,851.54	89.97	179.40	7,166.00	-10,622.71	1,697.13	0.00	0.00	0.00	0.00	ZELDA 25-11HZ_BHL

Corporate Planning Report

Database:	PLANNING	Local Co-ordinate Reference:	Well ZELDA 25-11HZ
Company:	US ROCKIES WATTENBERG PLANNING	TVD Reference:	RKB = 17' @ 4920.00usft (Drilling Rig)
Project:	WELD-NAD83-UTMFT13N	MD Reference:	RKB = 17' @ 4920.00usft (Drilling Rig)
Site:	2N-65W-25 Zelda 29-25HZ Pad	North Reference:	True
Well:	ZELDA 25-11HZ	Survey Calculation Method:	Minimum Curvature
Wellbore:	Plan A		
Design:	Permit Rev-1		

Planned Survey									
Measured Depth (usft)	Inclination (°)	Azimuth (°)	Vertical Depth (usft)	+N/-S (usft)	+E/-W (usft)	Vertical Section (usft)	Dogleg Rate (°/100usft)	Build Rate (°/100usft)	Turn Rate (°/100usft)
0.00	0.00	0.00	0.00	0.00	0.00	0.00	0.00	0.00	0.00
100.00	0.00	0.00	100.00	0.00	0.00	0.00	0.00	0.00	0.00
200.00	0.00	0.00	200.00	0.00	0.00	0.00	0.00	0.00	0.00
250.00	0.00	0.00	250.00	0.00	0.00	0.00	0.00	0.00	0.00
Start Build 1.50									
300.00	0.75	88.00	300.00	0.01	0.33	-0.01	1.50	1.50	0.00
400.00	2.25	88.00	399.96	0.10	2.94	-0.07	1.50	1.50	0.00
500.00	3.75	88.00	499.82	0.29	8.17	-0.20	1.50	1.50	0.00
600.00	5.25	88.00	599.51	0.56	16.01	-0.39	1.50	1.50	0.00
700.00	6.75	88.00	698.96	0.92	26.46	-0.65	1.50	1.50	0.00
800.00	8.25	88.00	798.10	1.38	39.50	-0.97	1.50	1.50	0.00
900.00	9.75	88.00	896.87	1.93	55.14	-1.35	1.50	1.50	0.00
1,000.00	11.25	88.00	995.19	2.56	73.35	-1.79	1.50	1.50	0.00
1,100.00	12.75	88.00	1,093.00	3.29	94.13	-2.30	1.50	1.50	0.00
1,200.00	14.25	88.00	1,190.24	4.10	117.46	-2.87	1.50	1.50	0.00
1,300.00	15.75	88.00	1,286.83	5.00	143.32	-3.50	1.50	1.50	0.00
1,388.80	17.08	88.00	1,372.00	5.88	168.40	-4.12	1.50	1.50	0.00
Fox Hills									
1,400.00	17.25	88.00	1,382.71	6.00	171.71	-4.20	1.50	1.50	0.00
1,500.00	18.75	88.00	1,477.81	7.07	202.59	-4.95	1.50	1.50	0.00
1,523.46	19.10	88.00	1,500.00	7.34	210.19	-5.14	1.50	1.50	0.00
9 5/8" Csg									
1,600.00	20.25	88.00	1,572.07	8.24	235.95	-5.77	1.50	1.50	0.00
1,700.00	21.75	88.00	1,665.43	9.49	271.76	-6.64	1.50	1.50	0.00
1,783.33	23.00	88.00	1,742.48	10.60	303.46	-7.42	1.50	1.50	0.00
Start 2700.00 hold at 1783.33 MD									
1,800.00	23.00	88.00	1,757.82	10.82	309.97	-7.58	0.00	0.00	0.00
1,900.00	23.00	88.00	1,849.88	12.19	349.02	-8.53	0.00	0.00	0.00
2,000.00	23.00	88.00	1,941.93	13.55	388.07	-9.49	0.00	0.00	0.00
2,100.00	23.00	88.00	2,033.98	14.92	427.12	-10.44	0.00	0.00	0.00
2,200.00	23.00	88.00	2,126.03	16.28	466.17	-11.40	0.00	0.00	0.00
2,300.00	23.00	88.00	2,218.08	17.64	505.22	-12.35	0.00	0.00	0.00
2,400.00	23.00	88.00	2,310.13	19.01	544.27	-13.31	0.00	0.00	0.00
2,500.00	23.00	88.00	2,402.18	20.37	583.32	-14.26	0.00	0.00	0.00
2,600.00	23.00	88.00	2,494.23	21.73	622.37	-15.22	0.00	0.00	0.00
2,700.00	23.00	88.00	2,586.28	23.10	661.42	-16.17	0.00	0.00	0.00
2,800.00	23.00	88.00	2,678.33	24.46	700.47	-17.12	0.00	0.00	0.00
2,900.00	23.00	88.00	2,770.38	25.82	739.51	-18.08	0.00	0.00	0.00
3,000.00	23.00	88.00	2,862.43	27.19	778.56	-19.03	0.00	0.00	0.00
3,100.00	23.00	88.00	2,954.48	28.55	817.61	-19.99	0.00	0.00	0.00
3,200.00	23.00	88.00	3,046.53	29.92	856.66	-20.94	0.00	0.00	0.00
3,300.00	23.00	88.00	3,138.58	31.28	895.71	-21.90	0.00	0.00	0.00
3,400.00	23.00	88.00	3,230.63	32.64	934.76	-22.85	0.00	0.00	0.00
3,500.00	23.00	88.00	3,322.68	34.01	973.81	-23.81	0.00	0.00	0.00
3,600.00	23.00	88.00	3,414.73	35.37	1,012.86	-24.76	0.00	0.00	0.00
3,700.00	23.00	88.00	3,506.78	36.73	1,051.91	-25.72	0.00	0.00	0.00
3,800.00	23.00	88.00	3,598.83	38.10	1,090.96	-26.67	0.00	0.00	0.00
3,900.00	23.00	88.00	3,690.88	39.46	1,130.01	-27.63	0.00	0.00	0.00
4,000.00	23.00	88.00	3,782.94	40.82	1,169.06	-28.58	0.00	0.00	0.00
4,100.00	23.00	88.00	3,874.99	42.19	1,208.11	-29.53	0.00	0.00	0.00
4,199.96	23.00	88.00	3,967.00	43.55	1,247.14	-30.49	0.00	0.00	0.00
Parkman									
4,200.00	23.00	88.00	3,967.04	43.55	1,247.16	-30.49	0.00	0.00	0.00
4,300.00	23.00	88.00	4,059.09	44.92	1,286.21	-31.44	0.00	0.00	0.00

Corporate Planning Report

Database:	PLANNING	Local Co-ordinate Reference:	Well ZELDA 25-11HZ
Company:	US ROCKIES WATTENBERG PLANNING	TVD Reference:	RKB = 17' @ 4920.00usft (Drilling Rig)
Project:	WELD-NAD83-UTMFT13N	MD Reference:	RKB = 17' @ 4920.00usft (Drilling Rig)
Site:	2N-65W-25 Zelda 29-25HZ Pad	North Reference:	True
Well:	ZELDA 25-11HZ	Survey Calculation Method:	Minimum Curvature
Wellbore:	Plan A		
Design:	Permit Rev-1		

Planned Survey									
Measured Depth (usft)	Inclination (°)	Azimuth (°)	Vertical Depth (usft)	+N/-S (usft)	+E/-W (usft)	Vertical Section (usft)	Dogleg Rate (°/100usft)	Build Rate (°/100usft)	Turn Rate (°/100usft)
4,400.00	23.00	88.00	4,151.14	46.28	1,325.25	-32.40	0.00	0.00	0.00
4,483.33	23.00	88.00	4,227.85	47.42	1,357.80	-33.19	0.00	0.00	0.00
Start DLS 2.00 TFO -180.00									
4,500.00	22.67	88.00	4,243.21	47.64	1,364.26	-33.35	2.00	-2.00	0.00
4,600.00	20.67	88.00	4,336.14	48.93	1,401.16	-34.25	2.00	-2.00	0.00
4,689.12	18.88	88.00	4,420.00	49.98	1,431.29	-34.99	2.00	-2.00	0.00
Sussex									
4,700.00	18.67	88.00	4,430.30	50.10	1,434.79	-35.08	2.00	-2.00	0.00
4,800.00	16.67	88.00	4,525.58	51.16	1,465.12	-35.82	2.00	-2.00	0.00
4,900.00	14.67	88.00	4,621.86	52.11	1,492.10	-36.48	2.00	-2.00	0.00
5,000.00	12.67	88.00	4,719.02	52.93	1,515.71	-37.05	2.00	-2.00	0.00
5,100.00	10.67	88.00	4,816.95	53.64	1,535.92	-37.55	2.00	-2.00	0.00
5,200.00	8.67	88.00	4,915.53	54.22	1,552.70	-37.96	2.00	-2.00	0.00
5,300.00	6.67	88.00	5,014.63	54.69	1,566.03	-38.28	2.00	-2.00	0.00
5,400.00	4.67	88.00	5,114.13	55.03	1,575.90	-38.53	2.00	-2.00	0.00
5,500.00	2.67	88.00	5,213.92	55.25	1,582.29	-38.68	2.00	-2.00	0.00
5,600.00	0.67	88.00	5,313.88	55.36	1,585.20	-38.75	2.00	-2.00	0.00
5,633.33	0.00	0.00	5,347.21	55.36	1,585.39	-38.76	2.00	-2.00	-264.00
Start 1176.17 hold at 5633.33 MD									
5,700.00	0.00	0.00	5,413.88	55.36	1,585.39	-38.76	0.00	0.00	0.00
5,800.00	0.00	0.00	5,513.88	55.36	1,585.39	-38.76	0.00	0.00	0.00
5,900.00	0.00	0.00	5,613.88	55.36	1,585.39	-38.76	0.00	0.00	0.00
6,000.00	0.00	0.00	5,713.88	55.36	1,585.39	-38.76	0.00	0.00	0.00
6,100.00	0.00	0.00	5,813.88	55.36	1,585.39	-38.76	0.00	0.00	0.00
6,200.00	0.00	0.00	5,913.88	55.36	1,585.39	-38.76	0.00	0.00	0.00
6,300.00	0.00	0.00	6,013.88	55.36	1,585.39	-38.76	0.00	0.00	0.00
6,400.00	0.00	0.00	6,113.88	55.36	1,585.39	-38.76	0.00	0.00	0.00
6,500.00	0.00	0.00	6,213.88	55.36	1,585.39	-38.76	0.00	0.00	0.00
6,600.00	0.00	0.00	6,313.88	55.36	1,585.39	-38.76	0.00	0.00	0.00
6,700.00	0.00	0.00	6,413.88	55.36	1,585.39	-38.76	0.00	0.00	0.00
6,800.00	0.00	0.00	6,513.88	55.36	1,585.39	-38.76	0.00	0.00	0.00
6,809.50	0.00	0.00	6,523.38	55.36	1,585.39	-38.76	0.00	0.00	0.00
KOP @ 6809.50ft									
6,900.00	8.14	179.40	6,613.57	48.94	1,585.46	-32.34	9.00	9.00	198.24
7,000.00	17.14	179.40	6,711.04	27.08	1,585.69	-10.47	9.00	9.00	0.00
7,100.00	26.14	179.40	6,803.90	-9.77	1,586.08	26.38	9.00	9.00	0.00
7,200.00	35.14	179.40	6,889.84	-60.69	1,586.61	77.30	9.00	9.00	0.00
7,200.19	35.14	179.40	6,890.00	-60.80	1,586.61	77.41	0.00	0.00	0.00
Sharon Springs									
7,250.57	39.70	179.40	6,930.00	-91.41	1,586.93	108.02	9.03	9.03	0.00
Niobrara									
7,300.00	44.14	179.40	6,966.77	-124.42	1,587.27	141.03	9.00	9.00	0.00
7,346.62	48.34	179.40	6,999.00	-158.08	1,587.63	174.70	9.00	9.00	0.00
Nio B									
7,350.00	48.64	179.40	7,001.24	-160.61	1,587.65	177.23	9.00	9.00	0.00
DLS = 9°/100'									
7,400.00	53.14	179.40	7,032.77	-199.40	1,588.06	216.02	9.00	9.00	0.00
7,500.00	62.14	179.40	7,086.23	-283.78	1,588.94	300.41	9.00	9.00	0.00
7,600.00	71.14	179.40	7,125.84	-375.49	1,589.90	392.12	9.00	9.00	0.00
7,685.71	78.86	179.40	7,148.00	-458.21	1,590.77	474.85	9.00	9.00	0.00
Nio C									
7,700.00	80.14	179.40	7,150.60	-472.26	1,590.91	488.90	9.00	9.00	0.00
7,800.00	89.14	179.40	7,159.93	-571.72	1,591.96	588.36	9.00	9.00	0.00

Corporate Planning Report

Database:	PLANNING	Local Co-ordinate Reference:	Well ZELDA 25-11HZ
Company:	US ROCKIES WATTENBERG PLANNING	TVD Reference:	RKB = 17' @ 4920.00usft (Drilling Rig)
Project:	WELD-NAD83-UTMFT13N	MD Reference:	RKB = 17' @ 4920.00usft (Drilling Rig)
Site:	2N-65W-25 Zelda 29-25HZ Pad	North Reference:	True
Well:	ZELDA 25-11HZ	Survey Calculation Method:	Minimum Curvature
Wellbore:	Plan A		
Design:	Permit Rev-1		

Planned Survey									
Measured Depth (usft)	Inclination (°)	Azimuth (°)	Vertical Depth (usft)	+N/-S (usft)	+E/-W (usft)	Vertical Section (usft)	Dogleg Rate (°/100usft)	Build Rate (°/100usft)	Turn Rate (°/100usft)
7,809.12	89.97	179.40	7,160.00	-580.84	1,592.05	597.48	9.00	9.00	0.00
End Build @ 7809.12ft - Top of Production									
7,900.00	89.97	179.40	7,160.05	-671.71	1,593.00	688.36	0.00	0.00	0.00
8,000.00	89.97	179.40	7,160.11	-771.71	1,594.05	788.36	0.00	0.00	0.00
8,100.00	89.97	179.40	7,160.17	-871.70	1,595.09	888.36	0.00	0.00	0.00
8,200.00	89.97	179.40	7,160.23	-971.70	1,596.14	988.36	0.00	0.00	0.00
8,300.00	89.97	179.40	7,160.29	-1,071.69	1,597.19	1,088.36	0.00	0.00	0.00
8,400.00	89.97	179.40	7,160.35	-1,171.69	1,598.23	1,188.36	0.00	0.00	0.00
8,500.00	89.97	179.40	7,160.41	-1,271.68	1,599.28	1,288.36	0.00	0.00	0.00
8,600.00	89.97	179.40	7,160.47	-1,371.67	1,600.33	1,388.36	0.00	0.00	0.00
8,700.00	89.97	179.40	7,160.53	-1,471.67	1,601.37	1,488.36	0.00	0.00	0.00
8,800.00	89.97	179.40	7,160.59	-1,571.66	1,602.42	1,588.36	0.00	0.00	0.00
8,900.00	89.97	179.40	7,160.65	-1,671.66	1,603.47	1,688.36	0.00	0.00	0.00
9,000.00	89.97	179.40	7,160.71	-1,771.65	1,604.51	1,788.36	0.00	0.00	0.00
9,100.00	89.97	179.40	7,160.77	-1,871.65	1,605.56	1,888.36	0.00	0.00	0.00
9,200.00	89.97	179.40	7,160.83	-1,971.64	1,606.61	1,988.36	0.00	0.00	0.00
9,300.00	89.97	179.40	7,160.89	-2,071.64	1,607.65	2,088.36	0.00	0.00	0.00
9,400.00	89.97	179.40	7,160.95	-2,171.63	1,608.70	2,188.36	0.00	0.00	0.00
9,500.00	89.97	179.40	7,161.01	-2,271.63	1,609.74	2,288.36	0.00	0.00	0.00
9,600.00	89.97	179.40	7,161.07	-2,371.62	1,610.79	2,388.36	0.00	0.00	0.00
9,700.00	89.97	179.40	7,161.13	-2,471.61	1,611.84	2,488.36	0.00	0.00	0.00
9,800.00	89.97	179.40	7,161.19	-2,571.61	1,612.88	2,588.36	0.00	0.00	0.00
9,900.00	89.97	179.40	7,161.25	-2,671.60	1,613.93	2,688.36	0.00	0.00	0.00
10,000.00	89.97	179.40	7,161.31	-2,771.60	1,614.98	2,788.36	0.00	0.00	0.00
10,100.00	89.97	179.40	7,161.37	-2,871.59	1,616.02	2,888.36	0.00	0.00	0.00
10,200.00	89.97	179.40	7,161.43	-2,971.59	1,617.07	2,988.36	0.00	0.00	0.00
10,300.00	89.97	179.40	7,161.49	-3,071.58	1,618.12	3,088.36	0.00	0.00	0.00
10,400.00	89.97	179.40	7,161.55	-3,171.58	1,619.16	3,188.36	0.00	0.00	0.00
10,500.00	89.97	179.40	7,161.61	-3,271.57	1,620.21	3,288.36	0.00	0.00	0.00
10,600.00	89.97	179.40	7,161.67	-3,371.57	1,621.25	3,388.36	0.00	0.00	0.00
10,700.00	89.97	179.40	7,161.73	-3,471.56	1,622.30	3,488.36	0.00	0.00	0.00
10,800.00	89.97	179.40	7,161.79	-3,571.55	1,623.35	3,588.36	0.00	0.00	0.00
10,900.00	89.97	179.40	7,161.85	-3,671.55	1,624.39	3,688.36	0.00	0.00	0.00
11,000.00	89.97	179.40	7,161.91	-3,771.54	1,625.44	3,788.36	0.00	0.00	0.00
11,100.00	89.97	179.40	7,161.96	-3,871.54	1,626.49	3,888.36	0.00	0.00	0.00
11,200.00	89.97	179.40	7,162.02	-3,971.53	1,627.53	3,988.36	0.00	0.00	0.00
11,300.00	89.97	179.40	7,162.08	-4,071.53	1,628.58	4,088.36	0.00	0.00	0.00
11,400.00	89.97	179.40	7,162.14	-4,171.52	1,629.63	4,188.36	0.00	0.00	0.00
11,500.00	89.97	179.40	7,162.20	-4,271.52	1,630.67	4,288.36	0.00	0.00	0.00
11,600.00	89.97	179.40	7,162.26	-4,371.51	1,631.72	4,388.36	0.00	0.00	0.00
11,700.00	89.97	179.40	7,162.32	-4,471.50	1,632.76	4,488.36	0.00	0.00	0.00
11,800.00	89.97	179.40	7,162.38	-4,571.50	1,633.81	4,588.36	0.00	0.00	0.00
11,900.00	89.97	179.40	7,162.44	-4,671.49	1,634.86	4,688.36	0.00	0.00	0.00
12,000.00	89.97	179.40	7,162.50	-4,771.49	1,635.90	4,788.36	0.00	0.00	0.00
12,100.00	89.97	179.40	7,162.56	-4,871.48	1,636.95	4,888.36	0.00	0.00	0.00
12,200.00	89.97	179.40	7,162.62	-4,971.48	1,638.00	4,988.36	0.00	0.00	0.00
12,300.00	89.97	179.40	7,162.68	-5,071.47	1,639.04	5,088.36	0.00	0.00	0.00
12,400.00	89.97	179.40	7,162.74	-5,171.47	1,640.09	5,188.36	0.00	0.00	0.00
12,500.00	89.97	179.40	7,162.80	-5,271.46	1,641.14	5,288.36	0.00	0.00	0.00
12,600.00	89.97	179.40	7,162.86	-5,371.46	1,642.18	5,388.36	0.00	0.00	0.00
12,700.00	89.97	179.40	7,162.92	-5,471.45	1,643.23	5,488.36	0.00	0.00	0.00
12,800.00	89.97	179.40	7,162.98	-5,571.44	1,644.28	5,588.36	0.00	0.00	0.00
12,900.00	89.97	179.40	7,163.04	-5,671.44	1,645.32	5,688.36	0.00	0.00	0.00

Corporate Planning Report

Database:	PLANNING	Local Co-ordinate Reference:	Well ZELDA 25-11HZ
Company:	US ROCKIES WATTENBERG PLANNING	TVD Reference:	RKB = 17' @ 4920.00usft (Drilling Rig)
Project:	WELD-NAD83-UTMFT13N	MD Reference:	RKB = 17' @ 4920.00usft (Drilling Rig)
Site:	2N-65W-25 Zelda 29-25HZ Pad	North Reference:	True
Well:	ZELDA 25-11HZ	Survey Calculation Method:	Minimum Curvature
Wellbore:	Plan A		
Design:	Permit Rev-1		

Planned Survey									
Measured Depth (usft)	Inclination (°)	Azimuth (°)	Vertical Depth (usft)	+N/-S (usft)	+E/-W (usft)	Vertical Section (usft)	Dogleg Rate (°/100usft)	Build Rate (°/100usft)	Turn Rate (°/100usft)
13,000.00	89.97	179.40	7,163.10	-5,771.43	1,646.37	5,788.36	0.00	0.00	0.00
13,100.00	89.97	179.40	7,163.16	-5,871.43	1,647.41	5,888.36	0.00	0.00	0.00
13,200.00	89.97	179.40	7,163.22	-5,971.42	1,648.46	5,988.36	0.00	0.00	0.00
13,300.00	89.97	179.40	7,163.28	-6,071.42	1,649.51	6,088.36	0.00	0.00	0.00
13,400.00	89.97	179.40	7,163.34	-6,171.41	1,650.55	6,188.36	0.00	0.00	0.00
13,500.00	89.97	179.40	7,163.40	-6,271.41	1,651.60	6,288.36	0.00	0.00	0.00
13,600.00	89.97	179.40	7,163.46	-6,371.40	1,652.65	6,388.36	0.00	0.00	0.00
13,700.00	89.97	179.40	7,163.52	-6,471.39	1,653.69	6,488.36	0.00	0.00	0.00
13,800.00	89.97	179.40	7,163.58	-6,571.39	1,654.74	6,588.36	0.00	0.00	0.00
13,900.00	89.97	179.40	7,163.64	-6,671.38	1,655.79	6,688.36	0.00	0.00	0.00
14,000.00	89.97	179.40	7,163.70	-6,771.38	1,656.83	6,788.36	0.00	0.00	0.00
14,100.00	89.97	179.40	7,163.76	-6,871.37	1,657.88	6,888.36	0.00	0.00	0.00
14,200.00	89.97	179.40	7,163.82	-6,971.37	1,658.92	6,988.36	0.00	0.00	0.00
14,300.00	89.97	179.40	7,163.88	-7,071.36	1,659.97	7,088.36	0.00	0.00	0.00
14,400.00	89.97	179.40	7,163.94	-7,171.36	1,661.02	7,188.36	0.00	0.00	0.00
14,500.00	89.97	179.40	7,164.00	-7,271.35	1,662.06	7,288.36	0.00	0.00	0.00
14,600.00	89.97	179.40	7,164.06	-7,371.35	1,663.11	7,388.36	0.00	0.00	0.00
14,700.00	89.97	179.40	7,164.12	-7,471.34	1,664.16	7,488.36	0.00	0.00	0.00
14,800.00	89.97	179.40	7,164.18	-7,571.33	1,665.20	7,588.36	0.00	0.00	0.00
14,900.00	89.97	179.40	7,164.24	-7,671.33	1,666.25	7,688.36	0.00	0.00	0.00
15,000.00	89.97	179.40	7,164.30	-7,771.32	1,667.30	7,788.36	0.00	0.00	0.00
15,100.00	89.97	179.40	7,164.36	-7,871.32	1,668.34	7,888.36	0.00	0.00	0.00
15,200.00	89.97	179.40	7,164.42	-7,971.31	1,669.39	7,988.36	0.00	0.00	0.00
15,300.00	89.97	179.40	7,164.48	-8,071.31	1,670.43	8,088.36	0.00	0.00	0.00
15,400.00	89.97	179.40	7,164.53	-8,171.30	1,671.48	8,188.36	0.00	0.00	0.00
15,500.00	89.97	179.40	7,164.59	-8,271.30	1,672.53	8,288.36	0.00	0.00	0.00
15,600.00	89.97	179.40	7,164.65	-8,371.29	1,673.57	8,388.36	0.00	0.00	0.00
15,700.00	89.97	179.40	7,164.71	-8,471.29	1,674.62	8,488.36	0.00	0.00	0.00
15,800.00	89.97	179.40	7,164.77	-8,571.28	1,675.67	8,588.36	0.00	0.00	0.00
15,900.00	89.97	179.40	7,164.83	-8,671.27	1,676.71	8,688.36	0.00	0.00	0.00
16,000.00	89.97	179.40	7,164.89	-8,771.27	1,677.76	8,788.36	0.00	0.00	0.00
16,100.00	89.97	179.40	7,164.95	-8,871.26	1,678.81	8,888.36	0.00	0.00	0.00
16,200.00	89.97	179.40	7,165.01	-8,971.26	1,679.85	8,988.36	0.00	0.00	0.00
16,300.00	89.97	179.40	7,165.07	-9,071.25	1,680.90	9,088.36	0.00	0.00	0.00
16,400.00	89.97	179.40	7,165.13	-9,171.25	1,681.94	9,188.36	0.00	0.00	0.00
16,500.00	89.97	179.40	7,165.19	-9,271.24	1,682.99	9,288.36	0.00	0.00	0.00
16,600.00	89.97	179.40	7,165.25	-9,371.24	1,684.04	9,388.36	0.00	0.00	0.00
16,700.00	89.97	179.40	7,165.31	-9,471.23	1,685.08	9,488.36	0.00	0.00	0.00
16,800.00	89.97	179.40	7,165.37	-9,571.22	1,686.13	9,588.36	0.00	0.00	0.00
16,900.00	89.97	179.40	7,165.43	-9,671.22	1,687.18	9,688.36	0.00	0.00	0.00
17,000.00	89.97	179.40	7,165.49	-9,771.21	1,688.22	9,788.36	0.00	0.00	0.00
17,100.00	89.97	179.40	7,165.55	-9,871.21	1,689.27	9,888.36	0.00	0.00	0.00
17,200.00	89.97	179.40	7,165.61	-9,971.20	1,690.32	9,988.36	0.00	0.00	0.00
17,300.00	89.97	179.40	7,165.67	-10,071.20	1,691.36	10,088.36	0.00	0.00	0.00
17,400.00	89.97	179.40	7,165.73	-10,171.19	1,692.41	10,188.36	0.00	0.00	0.00
17,500.00	89.97	179.40	7,165.79	-10,271.19	1,693.46	10,288.36	0.00	0.00	0.00
17,600.00	89.97	179.40	7,165.85	-10,371.18	1,694.50	10,388.36	0.00	0.00	0.00
17,700.00	89.97	179.40	7,165.91	-10,471.18	1,695.55	10,488.36	0.00	0.00	0.00
17,800.00	89.97	179.40	7,165.97	-10,571.17	1,696.59	10,588.36	0.00	0.00	0.00
17,851.54	89.97	179.40	7,166.00	-10,622.71	1,697.13	10,639.90	0.00	0.00	0.00
TD Well @ 17851.54ft									

Corporate Planning Report

Database:	PLANNING	Local Co-ordinate Reference:	Well ZELDA 25-11HZ
Company:	US ROCKIES WATTENBERG PLANNING	TVD Reference:	RKB = 17' @ 4920.00usft (Drilling Rig)
Project:	WELD-NAD83-UTMFT13N	MD Reference:	RKB = 17' @ 4920.00usft (Drilling Rig)
Site:	2N-65W-25 Zelda 29-25HZ Pad	North Reference:	True
Well:	ZELDA 25-11HZ	Survey Calculation Method:	Minimum Curvature
Wellbore:	Plan A		
Design:	Permit Rev-1		

Casing Points					
Measured Depth (usft)	Vertical Depth (usft)	Name	Casing Diameter (")	Hole Diameter (")	
1,523.46	1,500.00	9 5/8" Csg	9-5/8	13-1/2	
7,809.12	7,160.00	Top of Production	5-1/2	7-7/8	

Formations						
Measured Depth (usft)	Vertical Depth (usft)	Name	Lithology	Dip (°)	Dip Direction (°)	
1,388.80	1,372.00	Fox Hills				
4,199.96	3,967.00	Parkman				
4,689.12	4,420.00	Sussex				
7,200.19	6,890.00	Sharon Springs				
7,250.57	6,930.00	Niobrara				
7,346.62	6,999.00	Nio B				
7,685.71	7,148.00	Nio C				

Plan Annotations					
Measured Depth (usft)	Vertical Depth (usft)	Local Coordinates		Comment	
		+N/-S (usft)	+E/-W (usft)		
250.00	250.00	0.00	0.00	Start Build 1.50	
1,783.33	1,742.48	10.60	303.46	Start 2700.00 hold at 1783.33 MD	
4,483.33	4,227.85	47.42	1,357.80	Start DLS 2.00 TFO -180.00	
5,633.33	5,347.21	55.36	1,585.39	Start 1176.17 hold at 5633.33 MD	
6,809.50	6,523.38	55.36	1,585.39	KOP @ 6809.50ft	
7,350.00	7,001.24	-160.61	1,587.65	DLS = 9°/100'	
7,809.12	7,160.00	-580.84	1,592.05	End Build @ 7809.12ft	
17,851.54	7,166.00	-10,622.71	1,697.13	TD Well @ 17851.54ft	