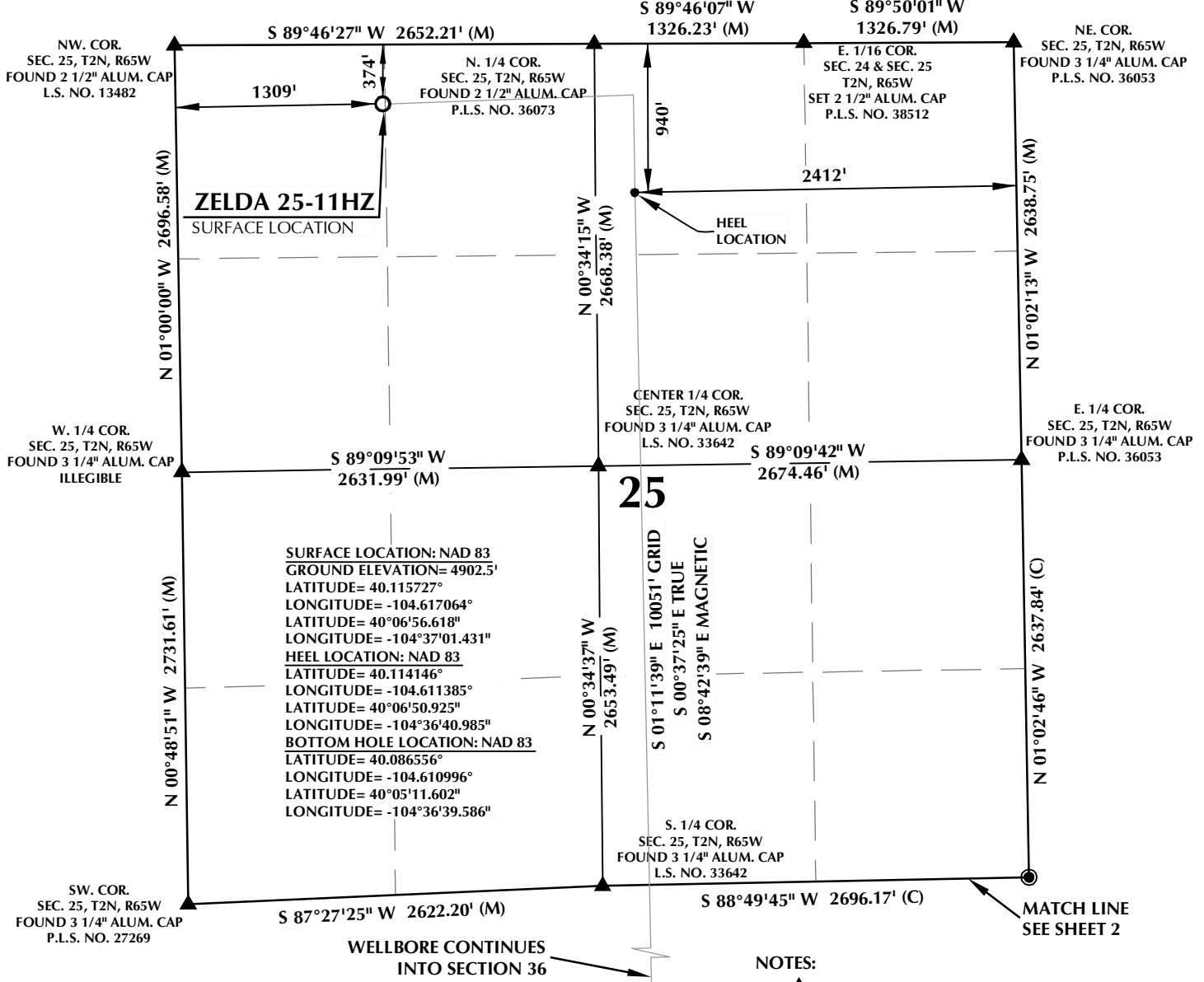


# T2N, R65W



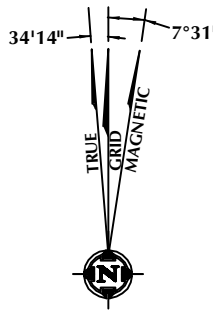
## CERTIFICATE OF SURVEYOR:

THIS IS TO CERTIFY THAT THE ABOVE PLAT WAS PREPARED FROM FIELD NOTES OF ACTUAL SURVEYS MADE BY ME OR UNDER MY SUPERVISION AND THAT THE SAME ARE TRUE AND CORRECT TO THE BEST OF MY KNOWLEDGE AND BELIEF. THIS CERTIFICATE DOES NOT REPRESENT A LAND SURVEY PLAT OR IMPROVEMENT SURVEY PLAT AS DEFINED BY C.R.S. 38-5-102 AND CANNOT BE RELIED UPON TO DETERMINE OWNERSHIP.

*Randall K. French*  
 RANDALL K. FRENCH  
 PROFESSIONAL LAND SURVEYOR  
 COLORADO REGISTRATION NUMBER 38512

NOTICE:  
 ACCORDING TO COLORADO STATE LAW YOU MUST TAKE LEGAL ACTION BASED UPON ANY DEFECT IN THIS SURVEY WITHIN THREE YEARS AFTER YOU FIRST DISCOVER SUCH DEFECT. IN NO EVENT MAY ANY ACTION BASED UPON ANY DEFECT IN THIS SURVEY BE COMMENCED MORE THAN TEN YEARS FROM THE DATE ON THE CERTIFICATION SHOWN HEREON.

NOTE:  
 MAGNETIC NORTH IS CURRENT AS OF 8/31/2017.  
 MAGNETIC NORTH CHANGES WEST 0°06' PER YEAR.



## WELL PAD - ZELDA 25-6HZ

ZELDA 25-11HZ  
 WELL LOCATION CERTIFICATE  
 374' FNL & 1309' FWL NWNW (SURFACE)  
 940' FNL & 2412' FEL NWNW (HEEL)  
 LOCATED IN SECTION 25  
 T2N, R65W, 6TH P.M.  
 331' FNL & 2328' FEL LOT 1 (NWNW) (BOTTOM)  
 LOCATED IN SECTION 1  
 T1N, R65W, 6TH P.M.  
 WELD COUNTY, COLORADO

**Kerr-McGee Oil &  
 Gas Onshore L.P.**  
 1099 18th Street  
 Denver, Colorado 80202



## CONSULTING, LLC

SHERIDAN OFFICE  
 1095 Saberton Avenue  
 Sheridan, Wyoming 82801  
 Phone 307-674-0609

LOVELAND OFFICE  
 1635 Foxtrail Drive, Suite 204  
 Loveland, Colorado 80538  
 Phone 970-776-4331

DRAFTED BY:	LMO	CHECKED BY:	RKF	SHEET NO:
DATE DRAFTED:	9/15/17	DATE SURVEYED:	7/27/17	1
REVISED:		FILE NAME:	16-188	1 OF 3

T2N, R65W

MATCH LINE  
SEE SHEET 1

NW. COR.  
SEC. 36, T2N, R65W  
FOUND 3 1/4" ALUM. CAP  
P.L.S. NO. 27269

N. 1/4 COR.  
SEC. 36, T2N, R65W  
FOUND 3 1/4" ALUM. CAP  
L.S. NO. 33642

SURFACE LOCATION: NAD 83  
GROUND ELEVATION= 4902.5'  
LATITUDE= 40.115727°  
LONGITUDE= -104.617064°  
LATITUDE= 40°06'56.618"  
LONGITUDE= -104°37'01.431"  
HEEL LOCATION: NAD 83  
LATITUDE= 40.114146°  
LONGITUDE= -104.611385°  
LATITUDE= 40°06'50.925"  
LONGITUDE= -104°36'40.985"  
BOTTOM HOLE LOCATION: NAD 83  
LATITUDE= 40.086556°  
LONGITUDE= -104.610996°  
LATITUDE= 40°05'11.602"  
LONGITUDE= -104°36'39.586"

N 01°10'51" W  
2677.89' (M)

S 01°11'39" E 10051' GRID  
S 00°37'25" E TRUE  
S 08°42'39" E MAGNETIC

N 00°28'48" W 2691.68' (C)

36

W. 1/4 COR.  
SEC. 36, T2N, R65W  
FOUND 3 1/4" ALUM. CAP  
L.S. NO. 37890

S 89°07'26" W  
2624.00' (M)

S 89°07'18" W  
2663.29' (M)

E. 1/4 COR.  
SEC. 36, T2N, R65W  
FOUND 3 1/4" ALUM. CAP  
ILLEGIBLE

CENTER 1/4 COR.  
SEC. 36, T2N, R65W  
FOUND 2 1/2" ALUM. CAP  
P.L.S. NO. 38345

N 01°06'20" W 2626.64' (M)

N 01°11'13" W  
2659.67' (M)

N 00°25'59" W 2692.80' (M)

S. 1/4 COR.  
SEC. 36, T2N, R65W  
FOUND 2 1/2" ALUM. CAP  
P.L.S. NO. 38345

S 89°50'34" W 2628.25' (M)

SE. COR.  
SEC. 36, T2N, R65W  
FOUND 2 1/2" ALUM. CAP  
ILLEGIBLE

SW. COR.  
SEC. 36, T2N, R65W  
FOUND 3 1/4" ALUM. CAP  
L.S. NO. 16406

S 89°50'38" W 2628.12' (M)

WELLBORE CONTINUES  
INTO SECTION 1, T1N, R65W

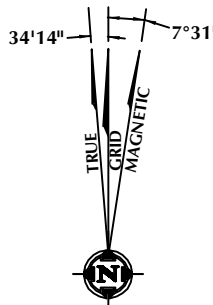
MATCH LINE  
SEE SHEET 3

# CERTIFICATE OF SURVEYOR:

THIS IS TO CERTIFY THAT THE ABOVE PLAT WAS PREPARED FROM FIELD NOTES OF ACTUAL SURVEYS MADE BY ME OR UNDER MY SUPERVISION AND THAT THE SAME ARE TRUE AND CORRECT TO THE BEST OF MY KNOWLEDGE AND BELIEF. THIS CERTIFICATE DOES NOT REPRESENT A LAND SURVEY PLAT OR IMPROVEMENT SURVEY PLAT AS DEFINED BY C.R.S. 38-5-102 AND CANNOT BE RELIED UPON TO DETERMINE OWNERSHIP.

*Randall K. French*  
RANDALL K. FRENCH  
PROFESSIONAL LAND SURVEYOR  
COLORADO REGISTRATION NUMBER 38512

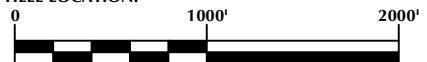
NOTICE:  
ACCORDING TO COLORADO STATE LAW YOU MUST TAKE LEGAL ACTION BASED UPON ANY DEFECT IN THIS SURVEY WITHIN THREE YEARS AFTER YOU FIRST DISCOVER SUCH DEFECT. IN NO EVENT MAY ANY ACTION BASED UPON ANY DEFECT IN THIS SURVEY BE COMMENCED MORE THAN TEN YEARS FROM THE DATE ON THE CERTIFICATION SHOWN HEREON.



NOTE:  
MAGNETIC NORTH IS CURRENT AS OF 8/31/2017.  
MAGNETIC NORTH CHANGES WEST 0°06' PER YEAR.

## NOTES:

- ▲ INDICATES SECTION CORNER
- INDICATES CALCULATED CORNER
- ELEVATION BASED ON NAVD88 (GEOID12B)
- BASIS OF BEARING DERIVED FROM COLORADO COORDINATE SYSTEM OF 1983 NORTH ZONE.
- ALL MEASURED DISTANCES ARE GRID.  
COMBINED SCALE FACTOR: .99972880 CALCULATED FROM THE N. 1/4 CORNER OF SECTION 25, T2N, R65W
- OPERATOR: TRAVIS HOLLAND / PDOP = 1.4
- SEE ADDENDUM TO WELL LOCATION CERTIFICATE FOR EXISTING IMPROVEMENTS WITHIN 500' OF THE WELL PAD. WELL FOOTAGES ARE MEASURED AT RIGHT ANGLES TO THE SECTION LINES.
- THE BOTTOM OF HOLE BEARS S01°11'39"E, 10051' FROM THE HEEL LOCATION.



SCALE: 1" = 1000'

## WELL PAD - ZELDA 25-6HZ

ZELDA 25-11HZ  
WELL LOCATION CERTIFICATE  
374' FNL & 1309' FWL NWNW (SURFACE)  
940' FNL & 2412' FEL NWNW (HEEL)  
LOCATED IN SECTION 25  
T2N, R65W, 6TH P.M.  
331' FNL & 2328' FEL LOT 1 (NWNW) (BOTTOM)  
LOCATED IN SECTION 1  
T1N, R65W, 6TH P.M.  
WELD COUNTY, COLORADO

Kerr-McGee Oil &  
Gas Onshore L.P.

1099 18th Street  
Denver, Colorado 80202



## CONSULTING, LLC

SHERIDAN OFFICE  
1095 Saberton Avenue  
Sheridan, Wyoming 82801  
Phone 307-674-0609

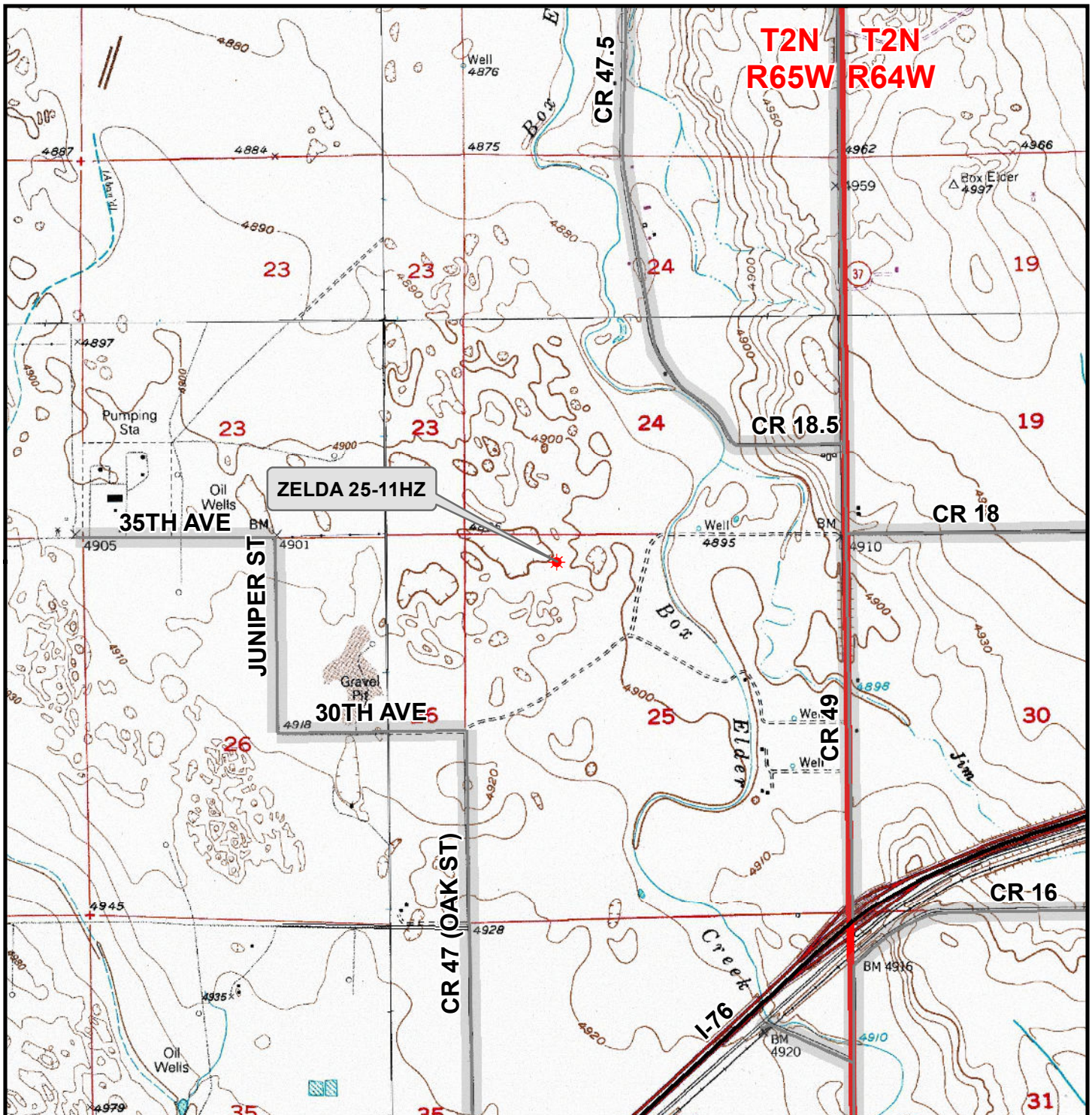
LOVELAND OFFICE  
1635 Foxtrail Drive, Suite 204  
Loveland, Colorado 80538  
Phone 970-776-4331

DRAFTED BY:	LMO	CHECKED BY:	RKF	SHEET NO:
DATE DRAFTED:	9/15/17	DATE SURVEYED:	7/27/17	2
REVISED:		FILE NAME:	16-188	2 OF 3

## C:\ANADARKO\2016\2016 188 ZELDA T2N R65W SEC 25\PLATS\ZELDA PLATS.dwg, 9/14/2017 3:42:38 PM, lsa



K:\ANADARKO\2016\2016\_188\_ZELDA\_T2N\_R65W\_SEC\_25\GIS\Maps\_ABC\Zelda 25-11HZ\Zelda 25-11HZ.mxd 9/15/2017 8:59:05 AM



### Legend

- ★ Well - Fee - Proposed    === Road - Primitive - Existing    — Road - County - Existing  
—— Road - Improved - Existing    ——— Road - Highway - Existing

**WELL PAD - ZELDA 25-6HZ**  
**GENERAL LOCATION MAP**  
**ZELDA 25-11HZ**  
**LOCATED IN SECTION 25**  
**T2N, R65W, 6th P.M.**  
**WELD COUNTY, COLORADO**

**Kerr-McGee Oil &  
Gas Onshore L.P.**

1099 18th Street  
Denver, Colorado 80202



**CONSULTING, LLC**

**SHERIDAN OFFICE**    **LOVELAND OFFICE**  
1095 Saberton Avenue    1635 Foxtail Drive, Suite 204  
Sheridan, Wyoming 82801    Loveland, Colorado 80538  
Phone 307-674-0609    Phone 970-776-4331

SCALE: 1" = 2,000ft

NAD83 CO-Nft

DRAWN: DP

DATE: 15 Sep 2017

REVISED:

DATE: