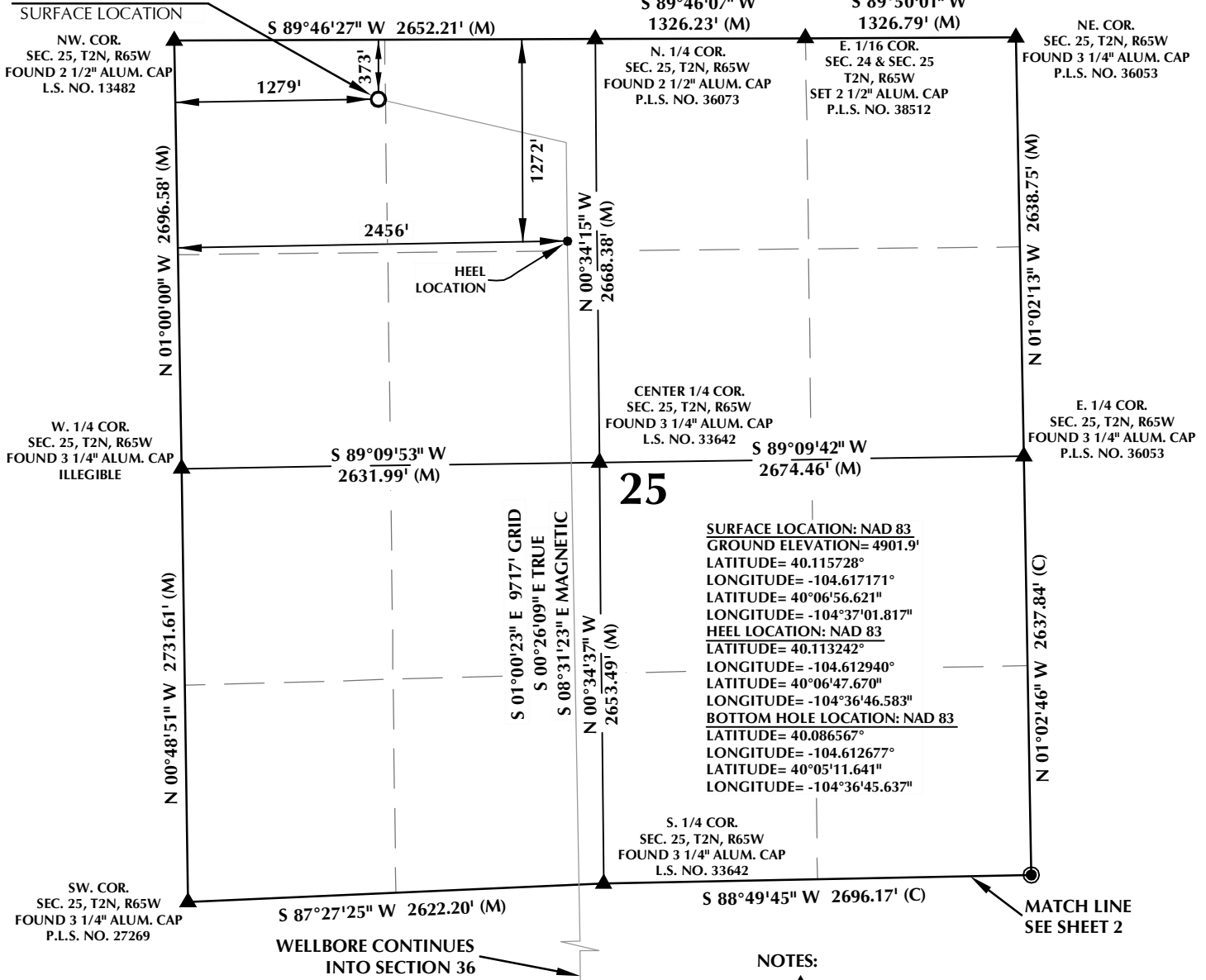


T2N, R65W

ZELDA 25-9HZ



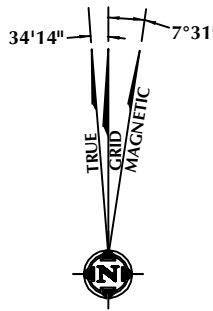
25

CERTIFICATE OF SURVEYOR:

THIS IS TO CERTIFY THAT THE ABOVE PLAT WAS PREPARED FROM FIELD NOTES OF ACTUAL SURVEYS MADE BY ME OR UNDER MY SUPERVISION AND THAT THE SAME ARE TRUE AND CORRECT TO THE BEST OF MY KNOWLEDGE AND BELIEF. THIS CERTIFICATE DOES NOT REPRESENT A LAND SURVEY PLAT OR IMPROVEMENT SURVEY PLAT AS DEFINED BY C.R.S. 38-5-102 AND CANNOT BE RELIED UPON TO DETERMINE OWNERSHIP.

Randall K. French
 RANDALL K. FRENCH
 PROFESSIONAL LAND SURVEYOR
 COLORADO REGISTRATION NUMBER 38512
 9/15/17

NOTICE: ACCORDING TO COLORADO STATE LAW YOU MUST TAKE LEGAL ACTION BASED UPON ANY DEFECT IN THIS SURVEY WITHIN THREE YEARS AFTER YOU FIRST DISCOVER SUCH DEFECT. IN NO EVENT MAY ANY ACTION BASED UPON ANY DEFECT IN THIS SURVEY BE COMMENCED MORE THAN TEN YEARS FROM THE DATE ON THE CERTIFICATION SHOWN HEREON.



NOTE: MAGNETIC NORTH IS CURRENT AS OF 8/31/2017. MAGNETIC NORTH CHANGES WEST 0°06' PER YEAR.

NOTES:

- ▲ INDICATES SECTION CORNER
- INDICATES CALCULATED CORNER
- ELEVATION BASED ON NAVD88 (GEOID12B)
- BASIS OF BEARING DERIVED FROM COLORADO COORDINATE SYSTEM OF 1983 NORTH ZONE.
- ALL MEASURED DISTANCES ARE GRID.
 COMBINED SCALE FACTOR: .99972880 CALCULATED FROM THE N. 1/4 CORNER OF SECTION 25, T2N, R65W
- OPERATOR: TRAVIS HOLLAND / PDOP = 1.4
- SEE ADDENDUM TO WELL LOCATION CERTIFICATE FOR EXISTING IMPROVEMENTS WITHIN 500' OF THE WELL PAD. WELL FOOTAGES ARE MEASURED AT RIGHT ANGLES TO THE SECTION LINES.
- THE BOTTOM OF HOLE BEARS S01°00'23"E, 9717' FROM THE HEEL LOCATION.



WELL PAD - ZELDA 25-6HZ

ZELDA 25-9HZ
 WELL LOCATION CERTIFICATE
 373' FNL & 1279' FWL NWNW (SURFACE)
 1272' FNL & 2456' FWL NENW (HEEL)
 LOCATED IN SECTION 25
 T2N, R65W, 6TH P.M.
 330' FNL & 2461' FWL LOT 2 (NENW) (BOTTOM)
 LOCATED IN SECTION 1
 T1N, R65W, 6TH P.M.
 WELD COUNTY, COLORADO

Kerr-McGee Oil & Gas Onshore L.P.
 1099 18th Street
 Denver, Colorado 80202



CONSULTING, LLC

SHERIDAN OFFICE 1095 Saberton Avenue Sheridan, Wyoming 82801 Phone 307-674-0609
 LOVELAND OFFICE 1635 Foxtrail Drive, Suite 204 Loveland, Colorado 80538 Phone 970-776-4331

DRAFTED BY: LMO	CHECKED BY: RKF	SHEET NO: 1 1 OF 3
DATE DRAFTED: 9/15/17	DATE SURVEYED: 7/27/17	
REVISED:	FILE NAME: 16-188	

T2N, R65W

NW COR.
SEC. 36, T2N, R65W
FOUND 3 1/4" ALUM. CAP
P.L.S. NO. 27269

N. 1/4 COR.
SEC. 36, T2N, R65W
FOUND 3 1/4" ALUM. CAP
L.S. NO. 33642

SURFACE LOCATION: NAD 83
GROUND ELEVATION=4901.9'
LATITUDE= 40.115728°
LONGITUDE= -104.617171°
LATITUDE= 40°06'56.621"
LONGITUDE= -104°37'01.817"
HEEL LOCATION: NAD 83
LATITUDE= 40.113242°
LONGITUDE= -104.612940°
LATITUDE= 40°06'47.670"
LONGITUDE= -104°36'46.583"
BOTTOM HOLE LOCATION: NAD 83
LATITUDE= 40.086567°
LONGITUDE= -104.612677°
LATITUDE= 40°05'11.641"
LONGITUDE= -104°36'45.637"

36

W. 1/4 COR.
SEC. 36, T2N, R65W
FOUND 3 1/4" ALUM. CAP
L.S. NO. 37890

CENTER 1/4 COR.
SEC. 36, T2N, R65W
FOUND 2 1/2" ALUM. CAP
P.L.S. NO. 38345

E. 1/4 COR.
SEC. 36, T2N, R65W
FOUND 2 1/4" ALUM. CAP
ILLEGIBLE

SW COR.
SEC. 36, T2N, R65W
FOUND 3 1/4" ALUM. CAP
L.S. NO. 16406

S. 1/4 COR.
SEC. 36, T2N, R65W
FOUND 2 1/2" ALUM. CAP
P.L.S. NO. 38345

SE COR.
SEC. 36, T2N, R65W
FOUND 2 1/2" ALUM. CAP
ILLEGIBLE

WELLBORE CONTINUES
INTO SECTION 1, T1N, R65W

NOTES:

- ▲ INDICATES SECTION CORNER
- INDICATES CALCULATED CORNER
- ELEVATION BASED ON NAVD88 (GEOID12B)
- BASIS OF BEARING DERIVED FROM COLORADO COORDINATE SYSTEM OF 1983 NORTH ZONE.
- ALL MEASURED DISTANCES ARE GRID.
COMBINED SCALE FACTOR: .99972880 CALCULATED FROM THE N. 1/4 CORNER OF SECTION 25, T2N, R65W
- OPERATOR: TRAVIS HOLLAND / PDOP = 1.4
- SEE ADDENDUM TO WELL LOCATION CERTIFICATE FOR EXISTING IMPROVEMENTS WITHIN 500' OF THE WELL PAD. WELL FOOTAGES ARE MEASURED AT RIGHT ANGLES TO THE SECTION LINES.
- THE BOTTOM OF HOLE BEARS S01°00'23"E, 9717' FROM THE HEEL LOCATION.

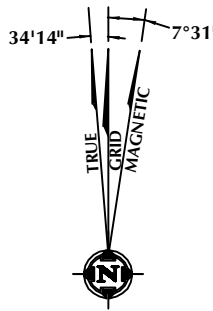


CERTIFICATE OF SURVEYOR:

THIS IS TO CERTIFY THAT THE ABOVE PLAT WAS PREPARED FROM FIELD NOTES OF ACTUAL SURVEYS MADE BY ME OR UNDER MY SUPERVISION AND THAT THE SAME ARE TRUE AND CORRECT TO THE BEST OF MY KNOWLEDGE AND BELIEF. THIS CERTIFICATE DOES NOT REPRESENT A LAND SURVEY PLAT OR IMPROVEMENT SURVEY PLAT AS DEFINED BY C.R.S. 24-5-102 AND CANNOT BE RELIED UPON TO DETERMINE OWNERSHIP.

Randall K. French
38512
PROFESSIONAL LAND SURVEYOR
9/15/17
RANDALL K. FRENCH
PROFESSIONAL LAND SURVEYOR
COLORADO REGISTRATION NUMBER 38512

NOTICE:
ACCORDING TO COLORADO STATE LAW YOU MUST TAKE LEGAL ACTION BASED UPON ANY DEFECT IN THIS SURVEY WITHIN THREE YEARS AFTER YOU FIRST DISCOVER SUCH DEFECT. IN NO EVENT MAY ANY ACTION BASED UPON ANY DEFECT IN THIS SURVEY BE COMMENCED MORE THAN TEN YEARS FROM THE DATE ON THE CERTIFICATION SHOWN HEREON.



NOTE:
MAGNETIC NORTH IS CURRENT AS OF 8/31/2017.
MAGNETIC NORTH CHANGES WEST 0°06' PER YEAR.

WELL PAD - ZELDA 25-6HZ

ZELDA 25-9HZ
WELL LOCATION CERTIFICATE
373' FNL & 1279' FWL NWNW (SURFACE)
1272' FNL & 2456' FWL NENW (HEEL)
LOCATED IN SECTION 25
T2N, R65W, 6TH P.M.
330' FNL & 2461' FWL LOT 2 (NENW) (BOTTOM)
LOCATED IN SECTION 1
T1N, R65W, 6TH P.M.
WELD COUNTY, COLORADO

**Kerr-McGee Oil &
Gas Onshore L.P.**
1099 18th Street
Denver, Colorado 80202



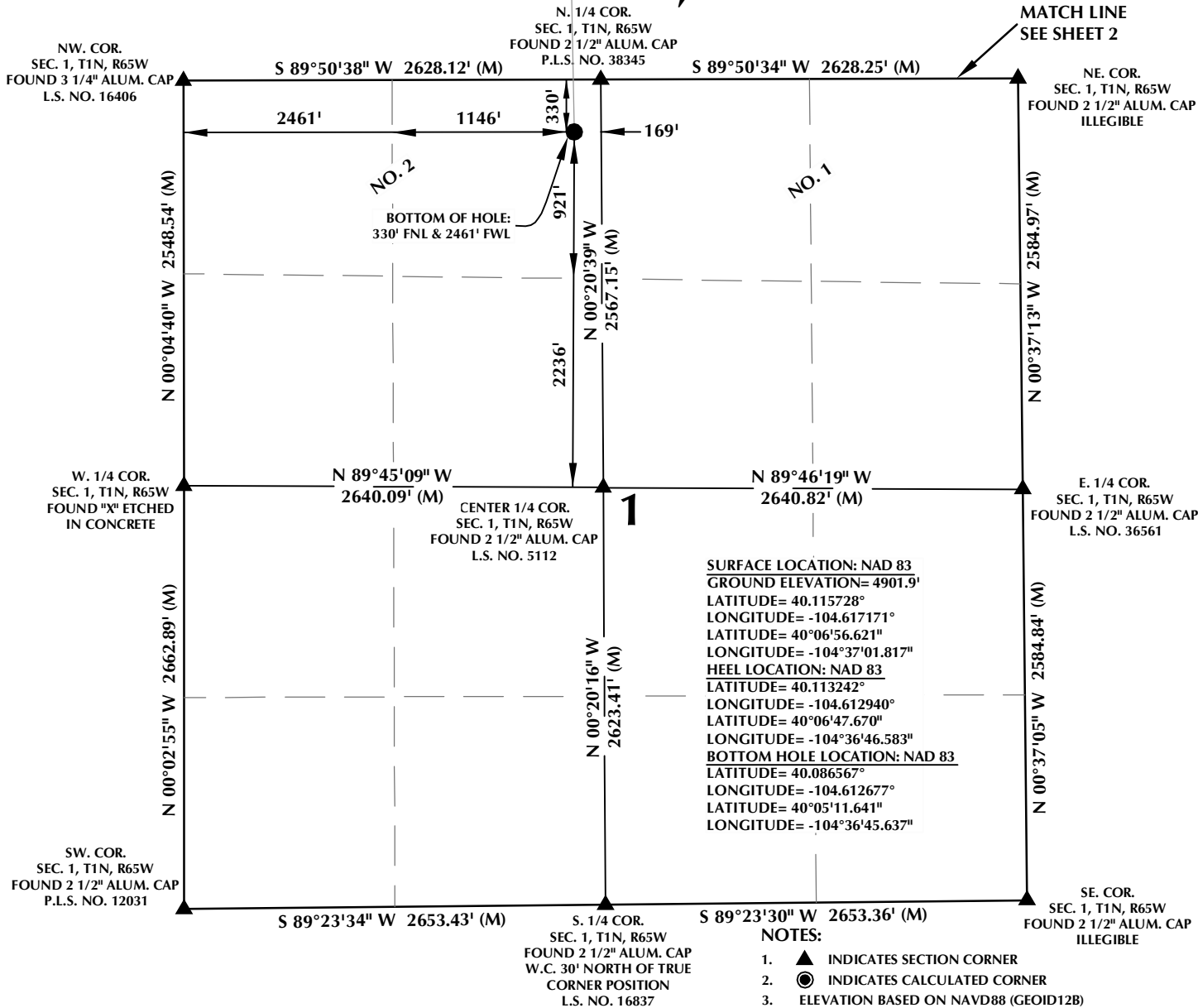
CONSULTING, LLC

SHERIDAN OFFICE
1095 Saberton Avenue
Sheridan, Wyoming 82801
Phone 307-674-0609

LOVELAND OFFICE
1635 Foxtrail Drive, Suite 204
Loveland, Colorado 80538
Phone 970-776-4331

DRAFTED BY:	LMO	CHECKED BY:	RKF	SHEET NO:
DATE DRAFTED:	9/15/17	DATE SURVEYED:	7/27/17	2
REVISED:		FILE NAME:	16-188	2 OF 3

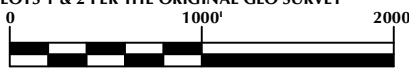
T1N, R65W



SURFACE LOCATION: NAD 83
 GROUND ELEVATION= 4901.9'
 LATITUDE= 40.115728°
 LONGITUDE= -104.617171°
HEEL LOCATION: NAD 83
 LATITUDE= 40.113242°
 LONGITUDE= -104.612940°
BOTTOM HOLE LOCATION: NAD 83
 LATITUDE= 40.086567°
 LONGITUDE= -104.612677°
 LONGITUDE= -104°36'45.637"

NOTES:

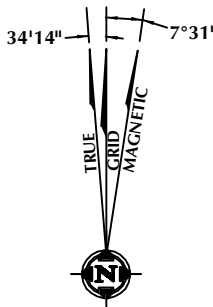
1. ▲ INDICATES SECTION CORNER
2. ● INDICATES CALCULATED CORNER
3. ELEVATION BASED ON NAVD88 (GEOID12B)
4. BASIS OF BEARING DERIVED FROM COLORADO COORDINATE SYSTEM OF 1983 NORTH ZONE.
5. ALL MEASURED DISTANCES ARE GRID.
 COMBINED SCALE FACTOR: .99972880 CALCULATED FROM THE N. 1/4 CORNER OF SECTION 25, T2N, R65W
6. OPERATOR: TRAVIS HOLLAND / PDOP = 1.4
7. SEE ADDENDUM TO WELL LOCATION CERTIFICATE FOR EXISTING IMPROVEMENTS WITHIN 500' OF THE WELL PAD.
8. WELL FOOTAGES ARE MEASURED AT RIGHT ANGLES TO THE SECTION LINES.
9. THE BOTTOM OF HOLE BEARS S01°00'23"E, 9717' FROM THE HEEL LOCATION.
10. NO. 1 & NO. 2 AS SHOWN HEREON ARE GOVERNMENT LOTS 1 & 2 PER THE ORIGINAL GLO SURVEY



CERTIFICATE OF SURVEYOR:

THIS IS TO CERTIFY THAT THE ABOVE PLAT WAS PREPARED FROM FIELD NOTES OF ACTUAL SURVEYS MADE BY ME OR UNDER MY SUPERVISION AND THAT THE SAME ARE TRUE AND CORRECT TO THE BEST OF MY KNOWLEDGE AND BELIEF. THIS CERTIFICATE DOES NOT REPRESENT A LAND SURVEY PLAT OR IMPROVEMENT SURVEY PLAT AS DEFINED BY C.R.S. §§ 5-5102 AND CANNOT BE RELIED UPON TO DETERMINE OWNERSHIP.

Randall K. French
 RANDALL K. FRENCH
 PROFESSIONAL LAND SURVEYOR
 COLORADO REGISTRATION NUMBER 38512
 9/15/17



NOTE:
 MAGNETIC NORTH IS CURRENT AS OF 8/31/2017.
 MAGNETIC NORTH CHANGES WEST 0°06' PER YEAR.

NOTICE:
 ACCORDING TO COLORADO STATE LAW YOU MUST TAKE LEGAL ACTION BASED UPON ANY DEFECT IN THIS SURVEY WITHIN THREE YEARS AFTER YOU FIRST DISCOVER SUCH DEFECT. IN NO EVENT MAY ANY ACTION BASED UPON ANY DEFECT IN THIS SURVEY BE COMMENCED MORE THAN TEN YEARS FROM THE DATE ON THE CERTIFICATION SHOWN HEREON.

WELL PAD - ZELDA 25-6HZ

ZELDA 25-9HZ
 WELL LOCATION CERTIFICATE
 373' FNL & 1279' FWL NWNW (SURFACE)
 1272' FNL & 2456' FWL NENW (HEEL)
 LOCATED IN SECTION 25
 T2N, R65W, 6TH P.M.
 330' FNL & 2461' FWL LOT 2 (NENW) (BOTTOM)
 LOCATED IN SECTION 1
 T1N, R65W, 6TH P.M.
 WELD COUNTY, COLORADO

Kerr-McGee Oil & Gas Onshore L.P.
 1099 18th Street
 Denver, Colorado 80202



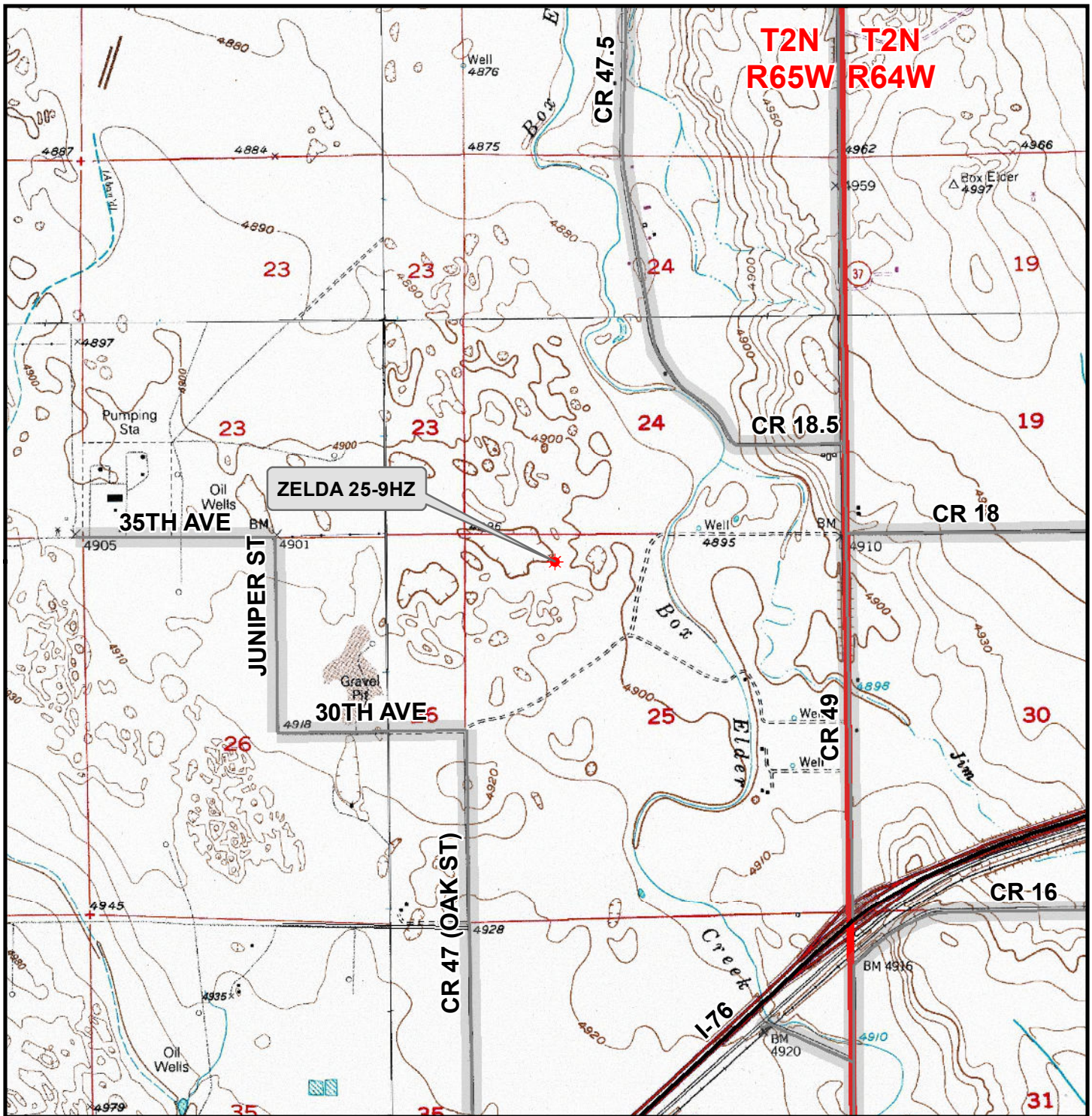
CONSULTING, LLC

SHERIDAN OFFICE
 1095 Saberton Avenue
 Sheridan, Wyoming 82801
 Phone 307-674-0609

LOVELAND OFFICE
 1635 Foxtrail Drive, Suite 204
 Loveland, Colorado 80538
 Phone 970-776-4331

DRAFTED BY: LMO	CHECKED BY: RKF	SHEET NO: 3 3 OF 3
DATE DRAFTED: 9/15/17	DATE SURVEYED: 7/27/17	
REVISED:	FILE NAME: 16-188	

K:\ANADARKO\2016\16_188_ZELDA_T2N_R65W_SEC_25\GIS\Maps_ABC\Zelda 25-1HZ\Zelda 25-9HZ.mxd 9/15/2017 8:59:52 AM



Legend

- ★ Well - Fee - Proposed
- ==== Road - Primitive - Existing
- Road - County - Existing
- Road - Improved - Existing
- Road - Highway - Existing

WELL PAD - ZELDA 25-6HZ
 GENERAL LOCATION MAP
 ZELDA 25-9HZ
 LOCATED IN SECTION 25
 T2N, R65W, 6th P.M.
 WELD COUNTY, COLORADO

**Kerr-McGee Oil &
 Gas Onshore L.P.**

1099 18th Street
 Denver, Colorado 80202



CONSULTING, LLC
 SHERIDAN OFFICE 1095 Saberton Avenue
 Sheridan, Wyoming 82801 Phone 307-674-0609
 LOVELAND OFFICE 1635 Foxtail Drive, Suite 204
 Loveland, Colorado 80538 Phone 970-776-4331

SCALE: 1" = 2,000ft	NAD83 CO-Nft
DRAWN: DP	DATE: 15 Sep 2017
REVISED:	DATE: