

# **US ROCKIES WATTENBERG PLANNING**

**WELD-NAD83-UTMFT13N  
2N-65W-25 Zelda 29-25HZ Pad  
ZELDA 25-7HZ**

**Plan A**

**Plan: Permit Rev-1**

SHL Latitude/Longitude: 40.115729/-104.617279  
Survey Program: MWD+IFR

## **Standard Planning Report**

**21 August, 2017**

Project: WELD-NAD83-UTMFT13N  
 Site: 2N-65W-25 Zelda 29-25HZ Pad  
 Well: ZELDA 25-7HZ  
 Wellbore: Plan A  
 Design: Permit Rev-1

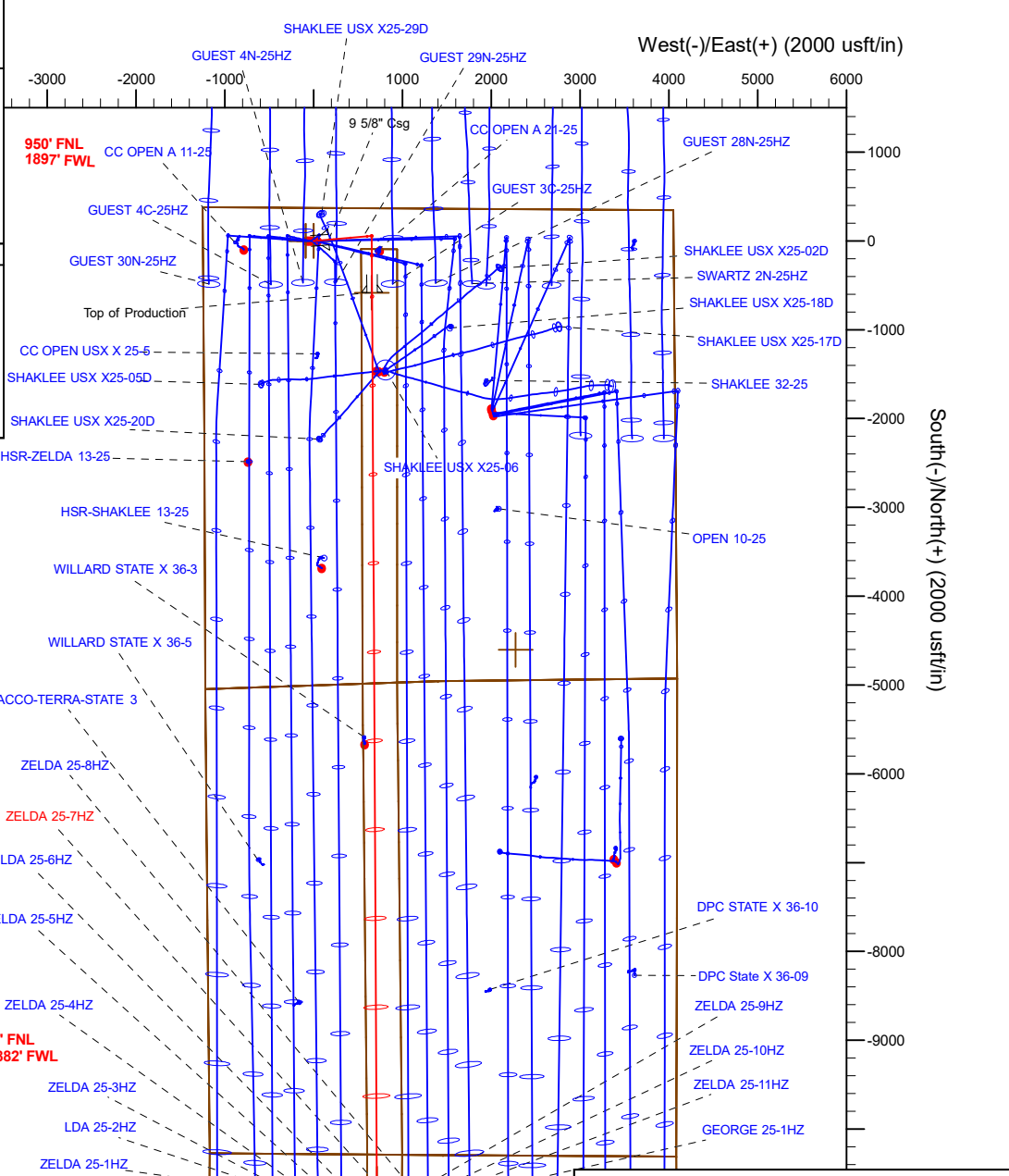
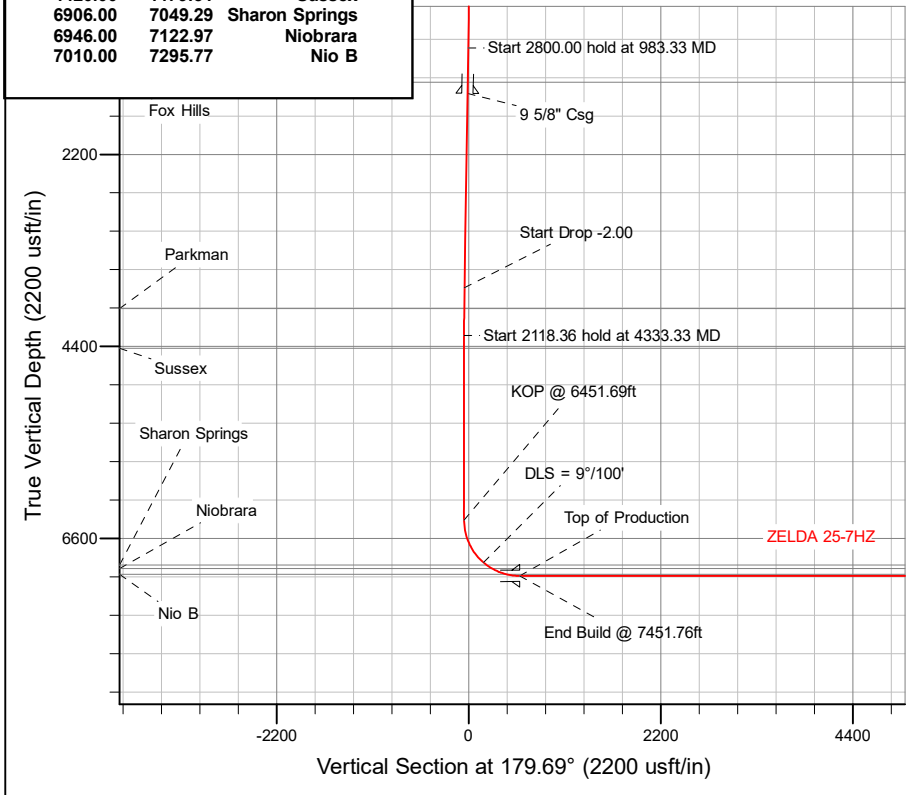
# US ROCKIES WATTENBERG PLANNING

CASING DETAILS			WELL DETAILS: ZELDA 25-7HZ	
TVD	MD	Size	GL = 4903'	
1500.00	1514.25	9-5/8		
7029.00	7451.76	5-1/2	RKB = 17' @ 4920.00usft (Drilling Rig)	

SECTION DETAILS										
Sec	MD	Inc	Azi	TVD	+N/-S	+E/-W	Dleg	TFace	Vsect	Target
1	0.00	0.00	0.00	0.00	0.00	0.00	0.00	0.00	0.00	0.00
2	250.00	0.00	0.00	250.00	0.00	0.00	0.00	0.00	0.00	0.00
3	983.33	11.00	85.00	978.84	6.12	69.91	1.50	85.00	-5.74	
4	3783.33	11.00	85.00	3727.39	52.68	602.14	0.00	0.00	-49.42	
5	4333.33	0.00	0.00	4274.02	57.27	654.58	2.00	180.00	-53.73	
6	6451.69	0.00	0.00	6392.38	57.27	654.58	0.00	0.00	-53.73	
7	7451.76	90.01	179.69	7029.00	-579.41	658.02	9.00	179.69	582.96	ZELDA 25-7HZ_BHL
8	17488.32	90.01	179.69	7028.00	-10615.82	712.29	0.00	0.00	10619.52	ZELDA 25-7HZ_BHL

WELLBORE TARGET DETAILS (LAT/LONG)						
Name	TVD	+N/-S	+E/-W	Latitude	Longitude	
ZELDA 25-7HZ_SHL	0.00	0.00	0.00	40.115729	-104.617279	
ZELDA 25-7HZ_BHL	7028.00	-10615.82	712.29	40.086577	-104.614732	

FORMATION TOP DETAILS		
TVDPath	MDPath	Formation
1372.00	1383.86	Fox Hills
3967.00	4025.72	Parkman
4420.00	4479.31	Sussex
6906.00	7049.29	Sharon Springs
6946.00	7122.97	Niobrara
7010.00	7295.77	Nio B



Plan: Permit Rev-1 (ZELDA 25-7HZ/Plan A)  
 Created By: \_\_\_\_\_ Date: 8/21/2017  
 Reviewed: \_\_\_\_\_ Date: \_\_\_\_\_

## Corporate Planning Report

<b>Database:</b>	PLANNING	<b>Local Co-ordinate Reference:</b>	Well ZELDA 25-7HZ
<b>Company:</b>	US ROCKIES WATTENBERG PLANNING	<b>TVD Reference:</b>	RKB = 17' @ 4920.00usft (Drilling Rig)
<b>Project:</b>	WELD-NAD83-UTMFT13N	<b>MD Reference:</b>	RKB = 17' @ 4920.00usft (Drilling Rig)
<b>Site:</b>	2N-65W-25 Zelda 29-25HZ Pad	<b>North Reference:</b>	True
<b>Well:</b>	ZELDA 25-7HZ	<b>Survey Calculation Method:</b>	Minimum Curvature
<b>Wellbore:</b>	Plan A		
<b>Design:</b>	Permit Rev-1		

<b>Project</b>	WELD-NAD83-UTMFT13N		
<b>Map System:</b>	Universal Transverse Mercator (US Survey Feet)	<b>System Datum:</b>	Mean Sea Level
<b>Geo Datum:</b>	North American Datum 1983		
<b>Map Zone:</b>	Zone 13N (108 W to 102 W)		

<b>Site</b>	2N-65W-25 Zelda 29-25HZ Pad				
<b>Site Position:</b>		<b>Northing:</b>	14,569,106.11 usft	<b>Latitude:</b>	40.115731
<b>From:</b>	Lat/Long	<b>Easting:</b>	1,747,327.27 usft	<b>Longitude:</b>	-104.617600
<b>Position Uncertainty:</b>	0.00 usft	<b>Slot Radius:</b>	13-3/16 "	<b>Grid Convergence:</b>	0.25 °

<b>Well</b>	ZELDA 25-7HZ					
<b>Well Position</b>	<b>+N-S</b>	-0.73 usft	<b>Northing:</b>	14,569,105.76 usft	<b>Latitude:</b>	40.115729
	<b>+E-W</b>	89.75 usft	<b>Easting:</b>	1,747,417.02 usft	<b>Longitude:</b>	-104.617279
<b>Position Uncertainty</b>		3.28 usft	<b>Wellhead Elevation:</b>		<b>Ground Level:</b>	4,903.00 usft

<b>Wellbore</b>	Plan A				
<b>Magnetics</b>	<b>Model Name</b>	<b>Sample Date</b>	<b>Declination (°)</b>	<b>Dip Angle (°)</b>	<b>Field Strength (nT)</b>
	IGRF2010	8/16/2017	7.93	66.63	52,347.24418306

<b>Design</b>	Permit Rev-1				
<b>Audit Notes:</b>					
<b>Version:</b>	<b>Phase:</b>	PLAN	<b>Tie On Depth:</b>	0.00	
<b>Vertical Section:</b>	<b>Depth From (TVD) (usft)</b>	<b>+N-S (usft)</b>	<b>+E-W (usft)</b>	<b>Direction (°)</b>	
	0.00	0.00	0.00	179.69	

<b>Plan Survey Tool Program</b>		<b>Date</b>	8/21/2017		
<b>Depth From (usft)</b>	<b>Depth To (usft)</b>	<b>Survey (Wellbore)</b>	<b>Tool Name</b>	<b>Remarks</b>	
1	0.00	1,500.00	Permit Rev-1 (Plan A)	APC_ISCWSA REV 2 MWD+II Fixed:v2:crustal field declinatio	
2	1,500.00	17,488.32	Permit Rev-1 (Plan A)	APC_ISCWSA REV 2 MWD+II Fixed:v2:crustal field declinatio	

## Corporate Planning Report

<b>Database:</b>	PLANNING	<b>Local Co-ordinate Reference:</b>	Well ZELDA 25-7HZ
<b>Company:</b>	US ROCKIES WATTENBERG PLANNING	<b>TVD Reference:</b>	RKB = 17' @ 4920.00usft (Drilling Rig)
<b>Project:</b>	WELD-NAD83-UTMFT13N	<b>MD Reference:</b>	RKB = 17' @ 4920.00usft (Drilling Rig)
<b>Site:</b>	2N-65W-25 Zelda 29-25HZ Pad	<b>North Reference:</b>	True
<b>Well:</b>	ZELDA 25-7HZ	<b>Survey Calculation Method:</b>	Minimum Curvature
<b>Wellbore:</b>	Plan A		
<b>Design:</b>	Permit Rev-1		

Plan Sections										
Measured Depth (usft)	Inclination (°)	Azimuth (°)	Vertical Depth (usft)	+N/-S (usft)	+E/-W (usft)	Dogleg Rate (°/100usft)	Build Rate (°/100usft)	Turn Rate (°/100usft)	TFO (°)	Target
0.00	0.00	0.00	0.00	0.00	0.00	0.00	0.00	0.00	0.00	
250.00	0.00	0.00	250.00	0.00	0.00	0.00	0.00	0.00	0.00	
983.33	11.00	85.00	978.84	6.12	69.91	1.50	1.50	0.00	85.00	
3,783.33	11.00	85.00	3,727.39	52.68	602.14	0.00	0.00	0.00	0.00	
4,333.33	0.00	0.00	4,274.02	57.27	654.58	2.00	-2.00	0.00	180.00	
6,451.69	0.00	0.00	6,392.38	57.27	654.58	0.00	0.00	0.00	0.00	
7,451.76	90.01	179.69	7,029.00	-579.41	658.02	9.00	9.00	17.97	179.69	
17,488.32	90.01	179.69	7,028.00	-10,615.82	712.29	0.00	0.00	0.00	0.00	ZELDA 25-7HZ_BHL

## Corporate Planning Report

<b>Database:</b>	PLANNING	<b>Local Co-ordinate Reference:</b>	Well ZELDA 25-7HZ
<b>Company:</b>	US ROCKIES WATTENBERG PLANNING	<b>TVD Reference:</b>	RKB = 17' @ 4920.00usft (Drilling Rig)
<b>Project:</b>	WELD-NAD83-UTMFT13N	<b>MD Reference:</b>	RKB = 17' @ 4920.00usft (Drilling Rig)
<b>Site:</b>	2N-65W-25 Zelda 29-25HZ Pad	<b>North Reference:</b>	True
<b>Well:</b>	ZELDA 25-7HZ	<b>Survey Calculation Method:</b>	Minimum Curvature
<b>Wellbore:</b>	Plan A		
<b>Design:</b>	Permit Rev-1		

Planned Survey									
Measured Depth (usft)	Inclination (°)	Azimuth (°)	Vertical Depth (usft)	+N/-S (usft)	+E/-W (usft)	Vertical Section (usft)	Dogleg Rate (°/100usft)	Build Rate (°/100usft)	Turn Rate (°/100usft)
0.00	0.00	0.00	0.00	0.00	0.00	0.00	0.00	0.00	0.00
100.00	0.00	0.00	100.00	0.00	0.00	0.00	0.00	0.00	0.00
200.00	0.00	0.00	200.00	0.00	0.00	0.00	0.00	0.00	0.00
250.00	0.00	0.00	250.00	0.00	0.00	0.00	0.00	0.00	0.00
<b>Start Build 1.50</b>									
300.00	0.75	85.00	300.00	0.03	0.33	-0.03	1.50	1.50	0.00
400.00	2.25	85.00	399.96	0.26	2.93	-0.24	1.50	1.50	0.00
500.00	3.75	85.00	499.82	0.71	8.15	-0.67	1.50	1.50	0.00
600.00	5.25	85.00	599.51	1.40	15.96	-1.31	1.50	1.50	0.00
700.00	6.75	85.00	698.96	2.31	26.38	-2.16	1.50	1.50	0.00
800.00	8.25	85.00	798.10	3.45	39.38	-3.23	1.50	1.50	0.00
900.00	9.75	85.00	896.87	4.81	54.96	-4.51	1.50	1.50	0.00
983.33	11.00	85.00	978.84	6.12	69.91	-5.74	1.50	1.50	0.00
<b>Start 2800.00 hold at 983.33 MD</b>									
1,000.00	11.00	85.00	995.20	6.39	73.08	-6.00	0.00	0.00	0.00
1,100.00	11.00	85.00	1,093.36	8.06	92.09	-7.56	0.00	0.00	0.00
1,200.00	11.00	85.00	1,191.52	9.72	111.10	-9.12	0.00	0.00	0.00
1,300.00	11.00	85.00	1,289.69	11.38	130.10	-10.68	0.00	0.00	0.00
1,383.86	11.00	85.00	1,372.00	12.78	146.04	-11.99	0.00	0.00	0.00
<b>Fox Hills</b>									
1,400.00	11.00	85.00	1,387.85	13.05	149.11	-12.24	0.00	0.00	0.00
1,500.00	11.00	85.00	1,486.01	14.71	168.12	-13.80	0.00	0.00	0.00
1,514.25	11.00	85.00	1,500.00	14.95	170.83	-14.02	0.00	0.00	0.00
<b>9 5/8" Csg</b>									
1,600.00	11.00	85.00	1,584.17	16.37	187.13	-15.36	0.00	0.00	0.00
1,700.00	11.00	85.00	1,682.34	18.03	206.14	-16.92	0.00	0.00	0.00
1,800.00	11.00	85.00	1,780.50	19.70	225.15	-18.48	0.00	0.00	0.00
1,900.00	11.00	85.00	1,878.66	21.36	244.15	-20.04	0.00	0.00	0.00
2,000.00	11.00	85.00	1,976.82	23.02	263.16	-21.60	0.00	0.00	0.00
2,100.00	11.00	85.00	2,074.99	24.69	282.17	-23.16	0.00	0.00	0.00
2,200.00	11.00	85.00	2,173.15	26.35	301.18	-24.72	0.00	0.00	0.00
2,300.00	11.00	85.00	2,271.31	28.01	320.19	-26.28	0.00	0.00	0.00
2,400.00	11.00	85.00	2,369.48	29.68	339.20	-27.84	0.00	0.00	0.00
2,500.00	11.00	85.00	2,467.64	31.34	358.20	-29.40	0.00	0.00	0.00
2,600.00	11.00	85.00	2,565.80	33.00	377.21	-30.96	0.00	0.00	0.00
2,700.00	11.00	85.00	2,663.96	34.66	396.22	-32.52	0.00	0.00	0.00
2,800.00	11.00	85.00	2,762.13	36.33	415.23	-34.08	0.00	0.00	0.00
2,900.00	11.00	85.00	2,860.29	37.99	434.24	-35.64	0.00	0.00	0.00
3,000.00	11.00	85.00	2,958.45	39.65	453.25	-37.20	0.00	0.00	0.00
3,100.00	11.00	85.00	3,056.61	41.32	472.25	-38.76	0.00	0.00	0.00
3,200.00	11.00	85.00	3,154.78	42.98	491.26	-40.32	0.00	0.00	0.00
3,300.00	11.00	85.00	3,252.94	44.64	510.27	-41.88	0.00	0.00	0.00
3,400.00	11.00	85.00	3,351.10	46.31	529.28	-43.44	0.00	0.00	0.00
3,500.00	11.00	85.00	3,449.27	47.97	548.29	-45.00	0.00	0.00	0.00
3,600.00	11.00	85.00	3,547.43	49.63	567.30	-46.56	0.00	0.00	0.00
3,700.00	11.00	85.00	3,645.59	51.29	586.30	-48.12	0.00	0.00	0.00
3,783.33	11.00	85.00	3,727.39	52.68	602.14	-49.42	0.00	0.00	0.00
<b>Start Drop -2.00</b>									
3,800.00	10.67	85.00	3,743.76	52.95	605.26	-49.68	2.00	-2.00	0.00
3,900.00	8.67	85.00	3,842.34	54.42	621.99	-51.05	2.00	-2.00	0.00
4,000.00	6.67	85.00	3,941.44	55.58	635.28	-52.14	2.00	-2.00	0.00
4,025.72	6.15	85.00	3,967.00	55.83	638.14	-52.38	2.00	-2.00	0.00
<b>Parkman</b>									

## Corporate Planning Report

<b>Database:</b>	PLANNING	<b>Local Co-ordinate Reference:</b>	Well ZELDA 25-7HZ
<b>Company:</b>	US ROCKIES WATTENBERG PLANNING	<b>TVD Reference:</b>	RKB = 17' @ 4920.00usft (Drilling Rig)
<b>Project:</b>	WELD-NAD83-UTMFT13N	<b>MD Reference:</b>	RKB = 17' @ 4920.00usft (Drilling Rig)
<b>Site:</b>	2N-65W-25 Zelda 29-25HZ Pad	<b>North Reference:</b>	True
<b>Well:</b>	ZELDA 25-7HZ	<b>Survey Calculation Method:</b>	Minimum Curvature
<b>Wellbore:</b>	Plan A		
<b>Design:</b>	Permit Rev-1		

Planned Survey										
Measured Depth (usft)	Inclination (°)	Azimuth (°)	Vertical Depth (usft)	+N/-S (usft)	+E/-W (usft)	Vertical Section (usft)	Dogleg Rate (°/100usft)	Build Rate (°/100usft)	Turn Rate (°/100usft)	
4,100.00	4.67	85.00	4,040.94	56.44	645.12	-52.95	2.00	-2.00	0.00	
4,200.00	2.67	85.00	4,140.74	57.00	651.49	-53.47	2.00	-2.00	0.00	
4,300.00	0.67	85.00	4,240.69	57.25	654.38	-53.71	2.00	-2.00	0.00	
4,333.33	0.00	0.00	4,274.02	57.27	654.58	-53.73	2.00	-2.00	0.00	
<b>Start 2118.36 hold at 4333.33 MD</b>										
4,400.00	0.00	0.00	4,340.69	57.27	654.58	-53.73	0.00	0.00	0.00	
4,479.31	0.00	0.00	4,420.00	57.27	654.58	-53.73	0.00	0.00	0.00	
<b>Sussex</b>										
4,500.00	0.00	0.00	4,440.69	57.27	654.58	-53.73	0.00	0.00	0.00	
4,600.00	0.00	0.00	4,540.69	57.27	654.58	-53.73	0.00	0.00	0.00	
4,700.00	0.00	0.00	4,640.69	57.27	654.58	-53.73	0.00	0.00	0.00	
4,800.00	0.00	0.00	4,740.69	57.27	654.58	-53.73	0.00	0.00	0.00	
4,900.00	0.00	0.00	4,840.69	57.27	654.58	-53.73	0.00	0.00	0.00	
5,000.00	0.00	0.00	4,940.69	57.27	654.58	-53.73	0.00	0.00	0.00	
5,100.00	0.00	0.00	5,040.69	57.27	654.58	-53.73	0.00	0.00	0.00	
5,200.00	0.00	0.00	5,140.69	57.27	654.58	-53.73	0.00	0.00	0.00	
5,300.00	0.00	0.00	5,240.69	57.27	654.58	-53.73	0.00	0.00	0.00	
5,400.00	0.00	0.00	5,340.69	57.27	654.58	-53.73	0.00	0.00	0.00	
5,500.00	0.00	0.00	5,440.69	57.27	654.58	-53.73	0.00	0.00	0.00	
5,600.00	0.00	0.00	5,540.69	57.27	654.58	-53.73	0.00	0.00	0.00	
5,700.00	0.00	0.00	5,640.69	57.27	654.58	-53.73	0.00	0.00	0.00	
5,800.00	0.00	0.00	5,740.69	57.27	654.58	-53.73	0.00	0.00	0.00	
5,900.00	0.00	0.00	5,840.69	57.27	654.58	-53.73	0.00	0.00	0.00	
6,000.00	0.00	0.00	5,940.69	57.27	654.58	-53.73	0.00	0.00	0.00	
6,100.00	0.00	0.00	6,040.69	57.27	654.58	-53.73	0.00	0.00	0.00	
6,200.00	0.00	0.00	6,140.69	57.27	654.58	-53.73	0.00	0.00	0.00	
6,300.00	0.00	0.00	6,240.69	57.27	654.58	-53.73	0.00	0.00	0.00	
6,400.00	0.00	0.00	6,340.69	57.27	654.58	-53.73	0.00	0.00	0.00	
6,451.69	0.00	0.00	6,392.38	57.27	654.58	-53.73	0.00	0.00	0.00	
<b>KOP @ 6451.69ft</b>										
6,500.00	4.35	179.69	6,440.64	55.44	654.59	-51.89	9.00	9.00	0.00	
6,600.00	13.35	179.69	6,539.35	40.07	654.67	-36.53	9.00	9.00	0.00	
6,700.00	22.35	179.69	6,634.44	9.45	654.84	-5.91	9.00	9.00	0.00	
6,800.00	31.35	179.69	6,723.57	-35.66	655.08	39.20	9.00	9.00	0.00	
6,900.00	40.35	179.69	6,804.54	-94.16	655.40	97.71	9.00	9.00	0.00	
7,000.00	49.35	179.69	6,875.37	-164.61	655.78	168.16	9.00	9.00	0.00	
<b>DLS = 9°/100'</b>										
7,049.29	53.78	179.69	6,906.00	-203.21	655.99	206.76	9.00	9.00	0.00	
<b>Sharon Springs</b>										
7,100.00	58.35	179.69	6,934.30	-245.27	656.21	248.82	9.00	9.00	0.00	
7,122.97	60.41	179.69	6,946.00	-265.04	656.32	268.59	9.00	9.00	0.00	
<b>Niobrara</b>										
7,200.00	67.35	179.69	6,979.89	-334.16	656.69	337.71	9.00	9.00	0.00	
7,295.77	75.97	179.69	7,010.00	-424.97	657.19	428.52	9.00	9.00	0.00	
<b>Nio B</b>										
7,300.00	76.35	179.69	7,011.01	-429.08	657.21	432.63	9.00	9.00	0.00	
7,400.00	85.35	179.69	7,026.90	-527.71	657.74	531.26	9.00	9.00	0.00	
7,451.76	90.01	179.69	7,029.00	-579.41	658.02	582.96	9.00	9.00	0.00	
<b>End Build @ 7451.76ft - Top of Production</b>										
7,500.00	90.01	179.69	7,029.00	-627.65	658.28	631.20	0.00	0.00	0.00	
7,600.00	90.01	179.69	7,028.99	-727.65	658.82	731.20	0.00	0.00	0.00	
7,700.00	90.01	179.69	7,028.98	-827.65	659.36	831.20	0.00	0.00	0.00	
7,800.00	90.01	179.69	7,028.97	-927.64	659.90	931.20	0.00	0.00	0.00	

## Corporate Planning Report

<b>Database:</b>	PLANNING	<b>Local Co-ordinate Reference:</b>	Well ZELDA 25-7HZ
<b>Company:</b>	US ROCKIES WATTENBERG PLANNING	<b>TVD Reference:</b>	RKB = 17' @ 4920.00usft (Drilling Rig)
<b>Project:</b>	WELD-NAD83-UTMFT13N	<b>MD Reference:</b>	RKB = 17' @ 4920.00usft (Drilling Rig)
<b>Site:</b>	2N-65W-25 Zelda 29-25HZ Pad	<b>North Reference:</b>	True
<b>Well:</b>	ZELDA 25-7HZ	<b>Survey Calculation Method:</b>	Minimum Curvature
<b>Wellbore:</b>	Plan A		
<b>Design:</b>	Permit Rev-1		

Planned Survey									
Measured Depth (usft)	Inclination (°)	Azimuth (°)	Vertical Depth (usft)	+N/-S (usft)	+E/-W (usft)	Vertical Section (usft)	Dogleg Rate (°/100usft)	Build Rate (°/100usft)	Turn Rate (°/100usft)
7,900.00	90.01	179.69	7,028.96	-1,027.64	660.44	1,031.20	0.00	0.00	0.00
8,000.00	90.01	179.69	7,028.95	-1,127.64	660.99	1,131.20	0.00	0.00	0.00
8,100.00	90.01	179.69	7,028.94	-1,227.64	661.53	1,231.20	0.00	0.00	0.00
8,200.00	90.01	179.69	7,028.93	-1,327.64	662.07	1,331.20	0.00	0.00	0.00
8,300.00	90.01	179.69	7,028.92	-1,427.64	662.61	1,431.20	0.00	0.00	0.00
8,400.00	90.01	179.69	7,028.91	-1,527.64	663.15	1,531.20	0.00	0.00	0.00
8,500.00	90.01	179.69	7,028.90	-1,627.63	663.69	1,631.20	0.00	0.00	0.00
8,600.00	90.01	179.69	7,028.89	-1,727.63	664.23	1,731.20	0.00	0.00	0.00
8,700.00	90.01	179.69	7,028.88	-1,827.63	664.77	1,831.20	0.00	0.00	0.00
8,800.00	90.01	179.69	7,028.87	-1,927.63	665.31	1,931.20	0.00	0.00	0.00
8,900.00	90.01	179.69	7,028.86	-2,027.63	665.85	2,031.20	0.00	0.00	0.00
9,000.00	90.01	179.69	7,028.85	-2,127.63	666.39	2,131.20	0.00	0.00	0.00
9,100.00	90.01	179.69	7,028.84	-2,227.62	666.93	2,231.20	0.00	0.00	0.00
9,200.00	90.01	179.69	7,028.83	-2,327.62	667.47	2,331.20	0.00	0.00	0.00
9,300.00	90.01	179.69	7,028.82	-2,427.62	668.01	2,431.20	0.00	0.00	0.00
9,400.00	90.01	179.69	7,028.81	-2,527.62	668.56	2,531.20	0.00	0.00	0.00
9,500.00	90.01	179.69	7,028.80	-2,627.62	669.10	2,631.20	0.00	0.00	0.00
9,600.00	90.01	179.69	7,028.79	-2,727.62	669.64	2,731.20	0.00	0.00	0.00
9,700.00	90.01	179.69	7,028.78	-2,827.62	670.18	2,831.20	0.00	0.00	0.00
9,800.00	90.01	179.69	7,028.77	-2,927.61	670.72	2,931.20	0.00	0.00	0.00
9,900.00	90.01	179.69	7,028.76	-3,027.61	671.26	3,031.20	0.00	0.00	0.00
10,000.00	90.01	179.69	7,028.75	-3,127.61	671.80	3,131.20	0.00	0.00	0.00
10,100.00	90.01	179.69	7,028.74	-3,227.61	672.34	3,231.20	0.00	0.00	0.00
10,200.00	90.01	179.69	7,028.73	-3,327.61	672.88	3,331.20	0.00	0.00	0.00
10,300.00	90.01	179.69	7,028.72	-3,427.61	673.42	3,431.20	0.00	0.00	0.00
10,400.00	90.01	179.69	7,028.71	-3,527.61	673.96	3,531.20	0.00	0.00	0.00
10,500.00	90.01	179.69	7,028.70	-3,627.60	674.50	3,631.20	0.00	0.00	0.00
10,600.00	90.01	179.69	7,028.69	-3,727.60	675.04	3,731.20	0.00	0.00	0.00
10,700.00	90.01	179.69	7,028.68	-3,827.60	675.58	3,831.20	0.00	0.00	0.00
10,800.00	90.01	179.69	7,028.67	-3,927.60	676.13	3,931.20	0.00	0.00	0.00
10,900.00	90.01	179.69	7,028.66	-4,027.60	676.67	4,031.20	0.00	0.00	0.00
11,000.00	90.01	179.69	7,028.65	-4,127.60	677.21	4,131.20	0.00	0.00	0.00
11,100.00	90.01	179.69	7,028.64	-4,227.60	677.75	4,231.20	0.00	0.00	0.00
11,200.00	90.01	179.69	7,028.63	-4,327.59	678.29	4,331.20	0.00	0.00	0.00
11,300.00	90.01	179.69	7,028.62	-4,427.59	678.83	4,431.20	0.00	0.00	0.00
11,400.00	90.01	179.69	7,028.61	-4,527.59	679.37	4,531.20	0.00	0.00	0.00
11,500.00	90.01	179.69	7,028.60	-4,627.59	679.91	4,631.20	0.00	0.00	0.00
11,600.00	90.01	179.69	7,028.59	-4,727.59	680.45	4,731.20	0.00	0.00	0.00
11,700.00	90.01	179.69	7,028.58	-4,827.59	680.99	4,831.20	0.00	0.00	0.00
11,800.00	90.01	179.69	7,028.57	-4,927.59	681.53	4,931.20	0.00	0.00	0.00
11,900.00	90.01	179.69	7,028.56	-5,027.58	682.07	5,031.20	0.00	0.00	0.00
12,000.00	90.01	179.69	7,028.55	-5,127.58	682.61	5,131.20	0.00	0.00	0.00
12,100.00	90.01	179.69	7,028.54	-5,227.58	683.15	5,231.20	0.00	0.00	0.00
12,200.00	90.01	179.69	7,028.53	-5,327.58	683.70	5,331.20	0.00	0.00	0.00
12,300.00	90.01	179.69	7,028.52	-5,427.58	684.24	5,431.20	0.00	0.00	0.00
12,400.00	90.01	179.69	7,028.51	-5,527.58	684.78	5,531.20	0.00	0.00	0.00
12,500.00	90.01	179.69	7,028.50	-5,627.58	685.32	5,631.20	0.00	0.00	0.00
12,600.00	90.01	179.69	7,028.49	-5,727.57	685.86	5,731.20	0.00	0.00	0.00
12,700.00	90.01	179.69	7,028.48	-5,827.57	686.40	5,831.20	0.00	0.00	0.00
12,800.00	90.01	179.69	7,028.47	-5,927.57	686.94	5,931.20	0.00	0.00	0.00
12,900.00	90.01	179.69	7,028.46	-6,027.57	687.48	6,031.20	0.00	0.00	0.00
13,000.00	90.01	179.69	7,028.45	-6,127.57	688.02	6,131.20	0.00	0.00	0.00
13,100.00	90.01	179.69	7,028.44	-6,227.57	688.56	6,231.20	0.00	0.00	0.00
13,200.00	90.01	179.69	7,028.43	-6,327.57	689.10	6,331.20	0.00	0.00	0.00

## Corporate Planning Report

<b>Database:</b>	PLANNING	<b>Local Co-ordinate Reference:</b>	Well ZELDA 25-7HZ
<b>Company:</b>	US ROCKIES WATTENBERG PLANNING	<b>TVD Reference:</b>	RKB = 17' @ 4920.00usft (Drilling Rig)
<b>Project:</b>	WELD-NAD83-UTMFT13N	<b>MD Reference:</b>	RKB = 17' @ 4920.00usft (Drilling Rig)
<b>Site:</b>	2N-65W-25 Zelda 29-25HZ Pad	<b>North Reference:</b>	True
<b>Well:</b>	ZELDA 25-7HZ	<b>Survey Calculation Method:</b>	Minimum Curvature
<b>Wellbore:</b>	Plan A		
<b>Design:</b>	Permit Rev-1		

### Planned Survey

Measured Depth (usft)	Inclination (°)	Azimuth (°)	Vertical Depth (usft)	+N/-S (usft)	+E/-W (usft)	Vertical Section (usft)	Dogleg Rate (°/100usft)	Build Rate (°/100usft)	Turn Rate (°/100usft)
13,300.00	90.01	179.69	7,028.42	-6,427.56	689.64	6,431.20	0.00	0.00	0.00
13,400.00	90.01	179.69	7,028.41	-6,527.56	690.18	6,531.20	0.00	0.00	0.00
13,500.00	90.01	179.69	7,028.40	-6,627.56	690.72	6,631.20	0.00	0.00	0.00
13,600.00	90.01	179.69	7,028.39	-6,727.56	691.27	6,731.20	0.00	0.00	0.00
13,700.00	90.01	179.69	7,028.38	-6,827.56	691.81	6,831.20	0.00	0.00	0.00
13,800.00	90.01	179.69	7,028.37	-6,927.56	692.35	6,931.20	0.00	0.00	0.00
13,900.00	90.01	179.69	7,028.36	-7,027.55	692.89	7,031.20	0.00	0.00	0.00
14,000.00	90.01	179.69	7,028.35	-7,127.55	693.43	7,131.20	0.00	0.00	0.00
14,100.00	90.01	179.69	7,028.34	-7,227.55	693.97	7,231.20	0.00	0.00	0.00
14,200.00	90.01	179.69	7,028.33	-7,327.55	694.51	7,331.20	0.00	0.00	0.00
14,300.00	90.01	179.69	7,028.32	-7,427.55	695.05	7,431.20	0.00	0.00	0.00
14,400.00	90.01	179.69	7,028.31	-7,527.55	695.59	7,531.20	0.00	0.00	0.00
14,500.00	90.01	179.69	7,028.30	-7,627.55	696.13	7,631.20	0.00	0.00	0.00
14,600.00	90.01	179.69	7,028.29	-7,727.54	696.67	7,731.20	0.00	0.00	0.00
14,700.00	90.01	179.69	7,028.28	-7,827.54	697.21	7,831.20	0.00	0.00	0.00
14,800.00	90.01	179.69	7,028.27	-7,927.54	697.75	7,931.20	0.00	0.00	0.00
14,900.00	90.01	179.69	7,028.26	-8,027.54	698.29	8,031.20	0.00	0.00	0.00
15,000.00	90.01	179.69	7,028.25	-8,127.54	698.84	8,131.20	0.00	0.00	0.00
15,100.00	90.01	179.69	7,028.24	-8,227.54	699.38	8,231.20	0.00	0.00	0.00
15,200.00	90.01	179.69	7,028.23	-8,327.54	699.92	8,331.20	0.00	0.00	0.00
15,300.00	90.01	179.69	7,028.22	-8,427.53	700.46	8,431.20	0.00	0.00	0.00
15,400.00	90.01	179.69	7,028.21	-8,527.53	701.00	8,531.20	0.00	0.00	0.00
15,500.00	90.01	179.69	7,028.20	-8,627.53	701.54	8,631.20	0.00	0.00	0.00
15,600.00	90.01	179.69	7,028.19	-8,727.53	702.08	8,731.20	0.00	0.00	0.00
15,700.00	90.01	179.69	7,028.18	-8,827.53	702.62	8,831.20	0.00	0.00	0.00
15,800.00	90.01	179.69	7,028.17	-8,927.53	703.16	8,931.20	0.00	0.00	0.00
15,900.00	90.01	179.69	7,028.16	-9,027.53	703.70	9,031.20	0.00	0.00	0.00
16,000.00	90.01	179.69	7,028.15	-9,127.52	704.24	9,131.20	0.00	0.00	0.00
16,100.00	90.01	179.69	7,028.14	-9,227.52	704.78	9,231.20	0.00	0.00	0.00
16,200.00	90.01	179.69	7,028.13	-9,327.52	705.32	9,331.20	0.00	0.00	0.00
16,300.00	90.01	179.69	7,028.12	-9,427.52	705.86	9,431.20	0.00	0.00	0.00
16,400.00	90.01	179.69	7,028.11	-9,527.52	706.41	9,531.20	0.00	0.00	0.00
16,500.00	90.01	179.69	7,028.10	-9,627.52	706.95	9,631.20	0.00	0.00	0.00
16,600.00	90.01	179.69	7,028.09	-9,727.52	707.49	9,731.20	0.00	0.00	0.00
16,700.00	90.01	179.69	7,028.08	-9,827.51	708.03	9,831.20	0.00	0.00	0.00
16,800.00	90.01	179.69	7,028.07	-9,927.51	708.57	9,931.20	0.00	0.00	0.00
16,900.00	90.01	179.69	7,028.06	-10,027.51	709.11	10,031.20	0.00	0.00	0.00
17,000.00	90.01	179.69	7,028.05	-10,127.51	709.65	10,131.20	0.00	0.00	0.00
17,100.00	90.01	179.69	7,028.04	-10,227.51	710.19	10,231.20	0.00	0.00	0.00
17,200.00	90.01	179.69	7,028.03	-10,327.51	710.73	10,331.20	0.00	0.00	0.00
17,300.00	90.01	179.69	7,028.02	-10,427.51	711.27	10,431.20	0.00	0.00	0.00
17,400.00	90.01	179.69	7,028.01	-10,527.50	711.81	10,531.20	0.00	0.00	0.00
17,488.32	90.01	179.69	7,028.00	-10,615.82	712.29	10,619.52	0.00	0.00	0.00
<b>TD Well @ 17488.32ft</b>									

### Casing Points

Measured Depth (usft)	Vertical Depth (usft)	Name	Casing Diameter (")	Hole Diameter (")
1,514.25	1,500.00	9 5/8" Csg	9-5/8	13-1/2
7,451.76	7,029.00	Top of Production	5-1/2	7-7/8

## Corporate Planning Report

<b>Database:</b>	PLANNING	<b>Local Co-ordinate Reference:</b>	Well ZELDA 25-7HZ
<b>Company:</b>	US ROCKIES WATTENBERG PLANNING	<b>TVD Reference:</b>	RKB = 17' @ 4920.00usft (Drilling Rig)
<b>Project:</b>	WELD-NAD83-UTMFT13N	<b>MD Reference:</b>	RKB = 17' @ 4920.00usft (Drilling Rig)
<b>Site:</b>	2N-65W-25 Zelda 29-25HZ Pad	<b>North Reference:</b>	True
<b>Well:</b>	ZELDA 25-7HZ	<b>Survey Calculation Method:</b>	Minimum Curvature
<b>Wellbore:</b>	Plan A		
<b>Design:</b>	Permit Rev-1		

Formations						
	Measured Depth (usft)	Vertical Depth (usft)	Name	Lithology	Dip (°)	Dip Direction (°)
	1,383.86	1,372.00	Fox Hills			
	4,025.72	3,967.00	Parkman			
	4,479.31	4,420.00	Sussex			
	7,049.29	6,906.00	Sharon Springs			
	7,122.97	6,946.00	Niobrara			
	7,295.77	7,010.00	Nio B			

Plan Annotations					
	Measured Depth (usft)	Vertical Depth (usft)	Local Coordinates		Comment
			+N/-S (usft)	+E/-W (usft)	
	250.00	250.00	0.00	0.00	Start Build 1.50
	983.33	978.84	6.12	69.91	Start 2800.00 hold at 983.33 MD
	3,783.33	3,727.39	52.68	602.14	Start Drop -2.00
	4,333.33	4,274.02	57.27	654.58	Start 2118.36 hold at 4333.33 MD
	6,451.69	6,392.38	57.27	654.58	KOP @ 6451.69ft
	7,000.00	6,875.37	-164.61	655.78	DLS = 9°/100'
	7,451.76	7,029.00	-579.41	658.02	End Build @ 7451.76ft
	17,488.32	7,028.00	-10,615.82	712.29	TD Well @ 17488.32ft