

US ROCKIES WATTENBERG PLANNING

**WELD-NAD83-UTMFT13N
2N-65W-25 Zelda 29-25HZ Pad
ZELDA 25-4HZ**

Plan A

Plan: Permit Rev-1

SHL Latitude/Longitude: 40.115730/-104.617439
Survey Program: MWD+IFR+MSA

Standard Planning Report

21 August, 2017

Project: WELD-NAD83-UTMFT13N
 Site: 2N-65W-25 Zelda 29-25HZ Pad
 Well: ZELDA 25-4HZ
 Wellbore: Plan A
 Design: Permit Rev-1

US ROCKIES WATTENBERG PLANNING

CASING DETAILS

TVD	MD	Size
1500.00	1508.79	9-5/8
7031.00	7410.59	5-1/2

WELL DETAILS: ZELDA 25-4HZ
 GL = 4903'
 RKB = 17' @ 4920.00usft (Drilling Rig)

SECTION DETAILS

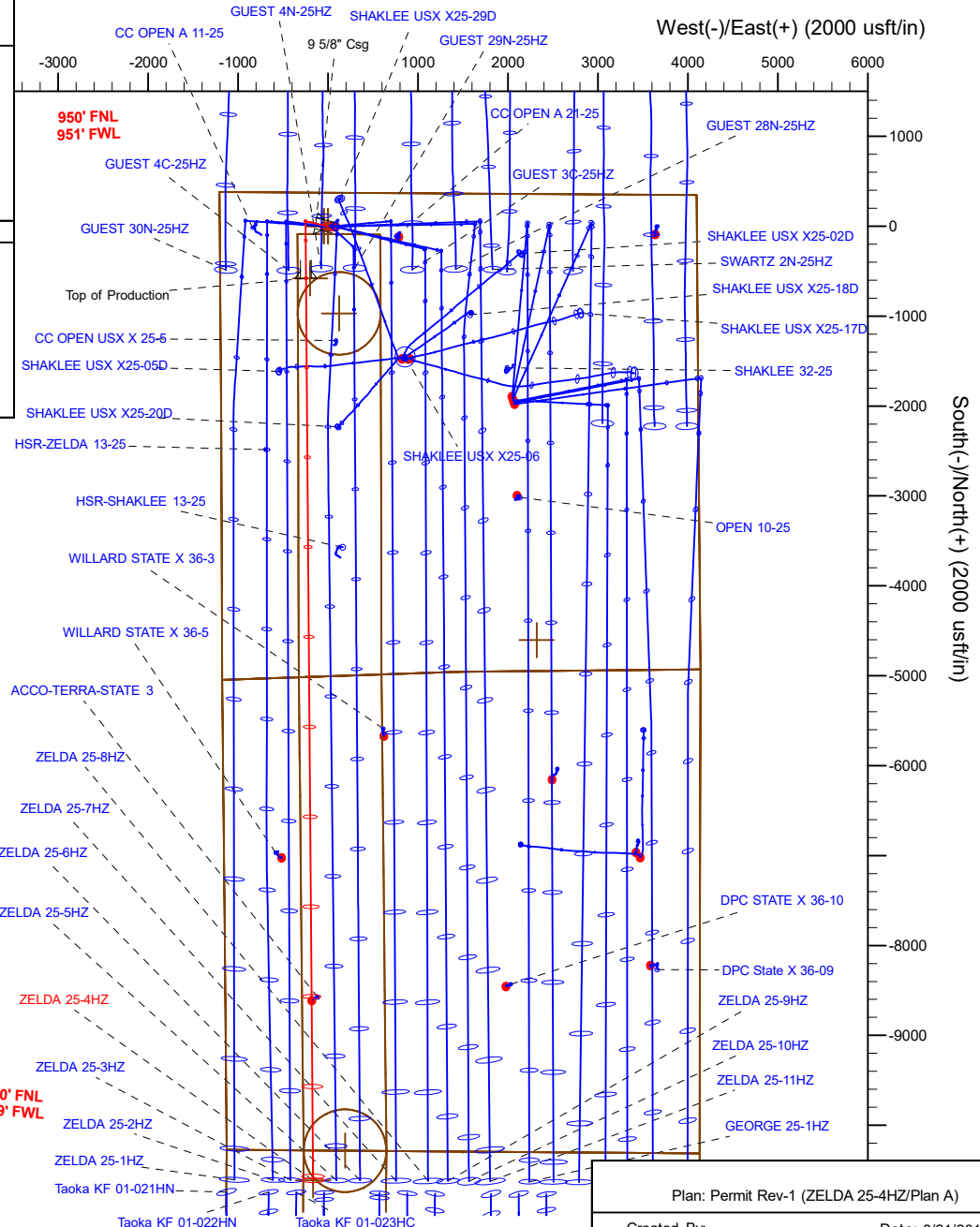
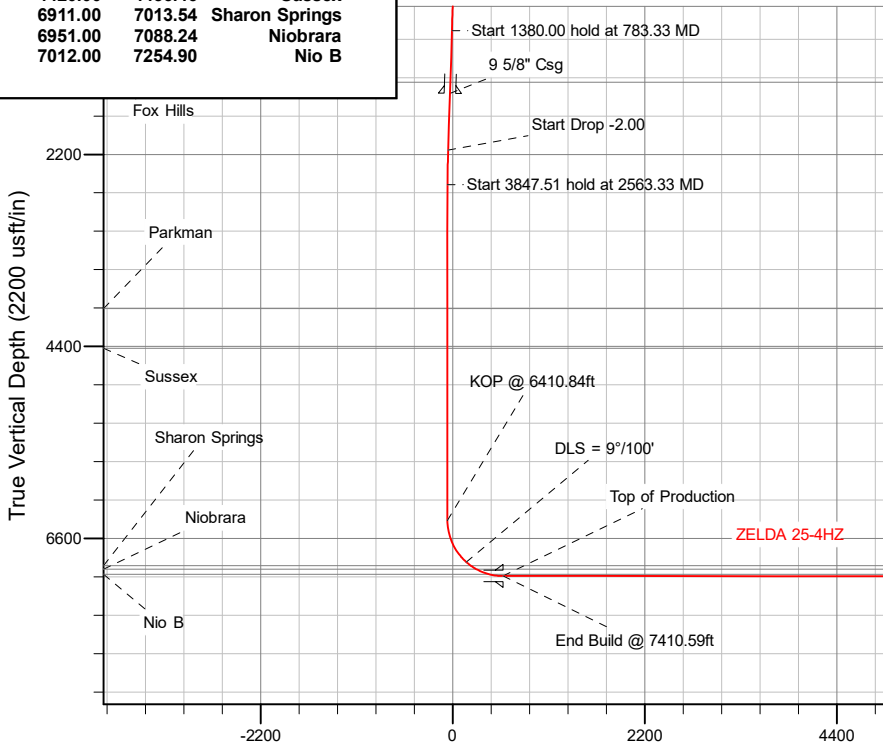
Sec	MD	Inc	Azi	TVD	+N/-S	+E/-W	Dleg	TFace	Vsect	Target
1	0.00	0.00	0.00	0.00	0.00	0.00	0.00	0.00	0.00	
2	250.00	0.00	0.00	250.00	0.00	0.00	0.00	0.00	0.00	
3	783.33	8.00	283.00	781.60	8.36	-36.22	1.50	283.00	-8.65	
4	2163.33	8.00	283.00	2148.17	51.57	-223.36	0.00	0.00	-53.32	
5	2563.33	0.00	0.00	2546.87	57.84	-250.52	2.00	180.00	-59.80	
6	6410.84	0.00	0.00	6394.38	57.84	-250.52	0.00	0.00	-59.80	
7	7410.59	89.98	179.55	7031.00	-578.51	-245.48	9.00	179.55	576.56	ZELDA 25-4HZ_BHL
8	17442.59	89.98	179.55	7035.00	-10610.19	-165.94	0.00	0.00	10608.56	ZELDA 25-4HZ_BHL

WELLBORE TARGET DETAILS (LAT/LONG)

Name	TVD	+N/-S	+E/-W	Latitude	Longitude
ZELDA 25-4HZ_SHL	0.00	0.00	0.00	40.115730	-104.617439
ZELDA 25-4HZ_BHL	7035.00	-10610.19	-165.94	40.086593	-104.618032

FORMATION TOP DETAILS

TVDPath	MDPath	Formation
1372.00	1379.53	Fox Hills
3967.00	3983.46	Parkman
4420.00	4436.46	Sussex
6911.00	7013.54	Sharon Springs
6951.00	7088.24	Niobrara
7012.00	7254.90	Nio B



Plan: Permit Rev-1 (ZELDA 25-4HZ/Plan A)

Created By: _____ Date: 8/21/2017
 Reviewed: _____ Date: _____

Corporate Planning Report

Database:	PLANNING	Local Co-ordinate Reference:	Well ZELDA 25-4HZ
Company:	US ROCKIES WATTENBERG PLANNING	TVD Reference:	RKB = 17' @ 4920.00usft (Drilling Rig)
Project:	WELD-NAD83-UTMFT13N	MD Reference:	RKB = 17' @ 4920.00usft (Drilling Rig)
Site:	2N-65W-25 Zelda 29-25HZ Pad	North Reference:	True
Well:	ZELDA 25-4HZ	Survey Calculation Method:	Minimum Curvature
Wellbore:	Plan A		
Design:	Permit Rev-1		

Project	WELD-NAD83-UTMFT13N		
Map System:	Universal Transverse Mercator (US Survey Feet)	System Datum:	Mean Sea Level
Geo Datum:	North American Datum 1983		
Map Zone:	Zone 13N (108 W to 102 W)		

Site	2N-65W-25 Zelda 29-25HZ Pad				
Site Position:		Northing:	14,569,106.11 usft	Latitude:	40.115731
From:	Lat/Long	Easting:	1,747,327.27 usft	Longitude:	-104.617600
Position Uncertainty:	0.00 usft	Slot Radius:	13-3/16 "	Grid Convergence:	0.25 °

Well	ZELDA 25-4HZ					
Well Position	+N-S	-0.36 usft	Northing:	14,569,105.94 usft	Latitude:	40.115730
	+E-W	45.01 usft	Easting:	1,747,372.29 usft	Longitude:	-104.617439
Position Uncertainty		3.28 usft	Wellhead Elevation:		Ground Level:	4,903.00 usft

Wellbore	Plan A				
Magnetics	Model Name	Sample Date	Declination (°)	Dip Angle (°)	Field Strength (nT)
	IGRF2010	8/16/2017	7.93	66.63	52,347.22860240

Design	Permit Rev-1				
Audit Notes:					
Version:	Phase:	PLAN	Tie On Depth:	0.00	
Vertical Section:	Depth From (TVD) (usft)	+N-S (usft)	+E-W (usft)	Direction (°)	
	0.00	0.00	0.00	179.55	

Plan Survey Tool Program		Date	8/21/2017		
Depth From (usft)	Depth To (usft)	Survey (Wellbore)	Tool Name	Remarks	
1	0.00	1,500.00	Permit Rev-1 (Plan A)	APC_ISCWSA REV 2 MWD+II Fixed:v2:crustal field declinatio	
2	1,500.00	17,442.59	Permit Rev-1 (Plan A)	APC_ISCWSA REV 2 MWD+II Fixed:v2:Rockies, crustal dec +	

Corporate Planning Report

Database:	PLANNING	Local Co-ordinate Reference:	Well ZELDA 25-4HZ
Company:	US ROCKIES WATTENBERG PLANNING	TVD Reference:	RKB = 17' @ 4920.00usft (Drilling Rig)
Project:	WELD-NAD83-UTMFT13N	MD Reference:	RKB = 17' @ 4920.00usft (Drilling Rig)
Site:	2N-65W-25 Zelda 29-25HZ Pad	North Reference:	True
Well:	ZELDA 25-4HZ	Survey Calculation Method:	Minimum Curvature
Wellbore:	Plan A		
Design:	Permit Rev-1		

Plan Sections										
Measured Depth (usft)	Inclination (°)	Azimuth (°)	Vertical Depth (usft)	+N/-S (usft)	+E/-W (usft)	Dogleg Rate (°/100usft)	Build Rate (°/100usft)	Turn Rate (°/100usft)	TFO (°)	Target
0.00	0.00	0.00	0.00	0.00	0.00	0.00	0.00	0.00	0.00	
250.00	0.00	0.00	250.00	0.00	0.00	0.00	0.00	0.00	0.00	
783.33	8.00	283.00	781.60	8.36	-36.22	1.50	1.50	0.00	283.00	
2,163.33	8.00	283.00	2,148.17	51.57	-223.36	0.00	0.00	0.00	0.00	
2,563.33	0.00	0.00	2,546.87	57.84	-250.52	2.00	-2.00	0.00	180.00	
6,410.84	0.00	0.00	6,394.38	57.84	-250.52	0.00	0.00	0.00	0.00	
7,410.59	89.98	179.55	7,031.00	-578.51	-245.48	9.00	9.00	17.96	179.55	
17,442.59	89.98	179.55	7,035.00	-10,610.19	-165.94	0.00	0.00	0.00	0.00	ZELDA 25-4HZ_BHL

Corporate Planning Report

Database:	PLANNING	Local Co-ordinate Reference:	Well ZELDA 25-4HZ
Company:	US ROCKIES WATTENBERG PLANNING	TVD Reference:	RKB = 17' @ 4920.00usft (Drilling Rig)
Project:	WELD-NAD83-UTMFT13N	MD Reference:	RKB = 17' @ 4920.00usft (Drilling Rig)
Site:	2N-65W-25 Zelda 29-25HZ Pad	North Reference:	True
Well:	ZELDA 25-4HZ	Survey Calculation Method:	Minimum Curvature
Wellbore:	Plan A		
Design:	Permit Rev-1		

Planned Survey

Measured Depth (usft)	Inclination (°)	Azimuth (°)	Vertical Depth (usft)	+N/-S (usft)	+E/-W (usft)	Vertical Section (usft)	Dogleg Rate (°/100usft)	Build Rate (°/100usft)	Turn Rate (°/100usft)
0.00	0.00	0.00	0.00	0.00	0.00	0.00	0.00	0.00	0.00
100.00	0.00	0.00	100.00	0.00	0.00	0.00	0.00	0.00	0.00
200.00	0.00	0.00	200.00	0.00	0.00	0.00	0.00	0.00	0.00
250.00	0.00	0.00	250.00	0.00	0.00	0.00	0.00	0.00	0.00
Start Build 1.50									
300.00	0.75	283.00	300.00	0.07	-0.32	-0.08	1.50	1.50	0.00
400.00	2.25	283.00	399.96	0.66	-2.87	-0.68	1.50	1.50	0.00
500.00	3.75	283.00	499.82	1.84	-7.97	-1.90	1.50	1.50	0.00
600.00	5.25	283.00	599.51	3.60	-15.61	-3.73	1.50	1.50	0.00
700.00	6.75	283.00	698.96	5.96	-25.80	-6.16	1.50	1.50	0.00
783.33	8.00	283.00	781.60	8.36	-36.22	-8.65	1.50	1.50	0.00
Start 1380.00 hold at 783.33 MD									
800.00	8.00	283.00	798.11	8.88	-38.48	-9.19	0.00	0.00	0.00
900.00	8.00	283.00	897.13	12.01	-52.04	-12.42	0.00	0.00	0.00
1,000.00	8.00	283.00	996.16	15.15	-65.60	-15.66	0.00	0.00	0.00
1,100.00	8.00	283.00	1,095.19	18.28	-79.16	-18.90	0.00	0.00	0.00
1,200.00	8.00	283.00	1,194.21	21.41	-92.72	-22.13	0.00	0.00	0.00
1,300.00	8.00	283.00	1,293.24	24.54	-106.28	-25.37	0.00	0.00	0.00
1,379.53	8.00	283.00	1,372.00	27.03	-117.07	-27.95	0.00	0.00	0.00
Fox Hills									
1,400.00	8.00	283.00	1,392.27	27.67	-119.84	-28.61	0.00	0.00	0.00
1,500.00	8.00	283.00	1,491.29	30.80	-133.40	-31.85	0.00	0.00	0.00
1,508.79	8.00	283.00	1,500.00	31.07	-134.60	-32.13	0.00	0.00	0.00
9 5/8" Csg									
1,600.00	8.00	283.00	1,590.32	33.93	-146.97	-35.08	0.00	0.00	0.00
1,700.00	8.00	283.00	1,689.35	37.06	-160.53	-38.32	0.00	0.00	0.00
1,800.00	8.00	283.00	1,788.37	40.19	-174.09	-41.56	0.00	0.00	0.00
1,900.00	8.00	283.00	1,887.40	43.32	-187.65	-44.79	0.00	0.00	0.00
2,000.00	8.00	283.00	1,986.43	46.45	-201.21	-48.03	0.00	0.00	0.00
2,100.00	8.00	283.00	2,085.46	49.58	-214.77	-51.27	0.00	0.00	0.00
2,163.33	8.00	283.00	2,148.17	51.57	-223.36	-53.32	0.00	0.00	0.00
Start Drop -2.00									
2,200.00	7.27	283.00	2,184.51	52.66	-228.10	-54.45	2.00	-2.00	0.00
2,300.00	5.27	283.00	2,283.91	55.12	-238.74	-56.99	2.00	-2.00	0.00
2,400.00	3.27	283.00	2,383.63	56.79	-245.99	-58.72	2.00	-2.00	0.00
2,500.00	1.27	283.00	2,483.55	57.68	-249.84	-59.64	2.00	-2.00	0.00
2,563.33	0.00	0.00	2,546.87	57.84	-250.52	-59.80	2.00	-2.00	0.00
Start 3847.51 hold at 2563.33 MD									
2,600.00	0.00	0.00	2,583.54	57.84	-250.52	-59.80	0.00	0.00	0.00
2,700.00	0.00	0.00	2,683.54	57.84	-250.52	-59.80	0.00	0.00	0.00
2,800.00	0.00	0.00	2,783.54	57.84	-250.52	-59.80	0.00	0.00	0.00
2,900.00	0.00	0.00	2,883.54	57.84	-250.52	-59.80	0.00	0.00	0.00
3,000.00	0.00	0.00	2,983.54	57.84	-250.52	-59.80	0.00	0.00	0.00
3,100.00	0.00	0.00	3,083.54	57.84	-250.52	-59.80	0.00	0.00	0.00
3,200.00	0.00	0.00	3,183.54	57.84	-250.52	-59.80	0.00	0.00	0.00
3,300.00	0.00	0.00	3,283.54	57.84	-250.52	-59.80	0.00	0.00	0.00
3,400.00	0.00	0.00	3,383.54	57.84	-250.52	-59.80	0.00	0.00	0.00
3,500.00	0.00	0.00	3,483.54	57.84	-250.52	-59.80	0.00	0.00	0.00
3,600.00	0.00	0.00	3,583.54	57.84	-250.52	-59.80	0.00	0.00	0.00
3,700.00	0.00	0.00	3,683.54	57.84	-250.52	-59.80	0.00	0.00	0.00
3,800.00	0.00	0.00	3,783.54	57.84	-250.52	-59.80	0.00	0.00	0.00
3,900.00	0.00	0.00	3,883.54	57.84	-250.52	-59.80	0.00	0.00	0.00
3,983.46	0.00	0.00	3,967.00	57.84	-250.52	-59.80	0.00	0.00	0.00

Corporate Planning Report

Database:	PLANNING	Local Co-ordinate Reference:	Well ZELDA 25-4HZ
Company:	US ROCKIES WATTENBERG PLANNING	TVD Reference:	RKB = 17' @ 4920.00usft (Drilling Rig)
Project:	WELD-NAD83-UTMFT13N	MD Reference:	RKB = 17' @ 4920.00usft (Drilling Rig)
Site:	2N-65W-25 Zelda 29-25HZ Pad	North Reference:	True
Well:	ZELDA 25-4HZ	Survey Calculation Method:	Minimum Curvature
Wellbore:	Plan A		
Design:	Permit Rev-1		

Planned Survey									
Measured Depth (usft)	Inclination (°)	Azimuth (°)	Vertical Depth (usft)	+N/-S (usft)	+E/-W (usft)	Vertical Section (usft)	Dogleg Rate (°/100usft)	Build Rate (°/100usft)	Turn Rate (°/100usft)
Parkman									
4,000.00	0.00	0.00	3,983.54	57.84	-250.52	-59.80	0.00	0.00	0.00
4,100.00	0.00	0.00	4,083.54	57.84	-250.52	-59.80	0.00	0.00	0.00
4,200.00	0.00	0.00	4,183.54	57.84	-250.52	-59.80	0.00	0.00	0.00
4,300.00	0.00	0.00	4,283.54	57.84	-250.52	-59.80	0.00	0.00	0.00
4,400.00	0.00	0.00	4,383.54	57.84	-250.52	-59.80	0.00	0.00	0.00
4,436.46	0.00	0.00	4,420.00	57.84	-250.52	-59.80	0.00	0.00	0.00
Sussex									
4,500.00	0.00	0.00	4,483.54	57.84	-250.52	-59.80	0.00	0.00	0.00
4,600.00	0.00	0.00	4,583.54	57.84	-250.52	-59.80	0.00	0.00	0.00
4,700.00	0.00	0.00	4,683.54	57.84	-250.52	-59.80	0.00	0.00	0.00
4,800.00	0.00	0.00	4,783.54	57.84	-250.52	-59.80	0.00	0.00	0.00
4,900.00	0.00	0.00	4,883.54	57.84	-250.52	-59.80	0.00	0.00	0.00
5,000.00	0.00	0.00	4,983.54	57.84	-250.52	-59.80	0.00	0.00	0.00
5,100.00	0.00	0.00	5,083.54	57.84	-250.52	-59.80	0.00	0.00	0.00
5,200.00	0.00	0.00	5,183.54	57.84	-250.52	-59.80	0.00	0.00	0.00
5,300.00	0.00	0.00	5,283.54	57.84	-250.52	-59.80	0.00	0.00	0.00
5,400.00	0.00	0.00	5,383.54	57.84	-250.52	-59.80	0.00	0.00	0.00
5,500.00	0.00	0.00	5,483.54	57.84	-250.52	-59.80	0.00	0.00	0.00
5,600.00	0.00	0.00	5,583.54	57.84	-250.52	-59.80	0.00	0.00	0.00
5,700.00	0.00	0.00	5,683.54	57.84	-250.52	-59.80	0.00	0.00	0.00
5,800.00	0.00	0.00	5,783.54	57.84	-250.52	-59.80	0.00	0.00	0.00
5,900.00	0.00	0.00	5,883.54	57.84	-250.52	-59.80	0.00	0.00	0.00
6,000.00	0.00	0.00	5,983.54	57.84	-250.52	-59.80	0.00	0.00	0.00
6,100.00	0.00	0.00	6,083.54	57.84	-250.52	-59.80	0.00	0.00	0.00
6,200.00	0.00	0.00	6,183.54	57.84	-250.52	-59.80	0.00	0.00	0.00
6,300.00	0.00	0.00	6,283.54	57.84	-250.52	-59.80	0.00	0.00	0.00
6,400.00	0.00	0.00	6,383.54	57.84	-250.52	-59.80	0.00	0.00	0.00
6,410.84	0.00	0.00	6,394.38	57.84	-250.52	-59.80	0.00	0.00	0.00
KOP @ 6410.84ft									
6,500.00	8.02	179.55	6,483.25	51.60	-250.47	-53.57	9.00	9.00	0.00
6,600.00	17.02	179.55	6,580.77	29.94	-250.30	-31.91	9.00	9.00	0.00
6,700.00	26.02	179.55	6,673.70	-6.71	-250.01	4.74	9.00	9.00	0.00
6,800.00	35.02	179.55	6,759.75	-57.44	-249.61	55.48	9.00	9.00	0.00
6,900.00	44.02	179.55	6,836.81	-121.02	-249.10	119.06	9.00	9.00	0.00
6,950.00	48.52	179.55	6,871.36	-157.14	-248.82	155.18	9.00	9.00	0.00
DLS = 9°/100'									
7,000.00	53.02	179.55	6,902.97	-195.86	-248.51	193.90	9.00	9.00	0.00
7,013.54	54.24	179.55	6,911.00	-206.76	-248.42	204.81	9.00	9.00	0.00
Sharon Springs									
7,088.24	60.97	179.55	6,951.00	-269.80	-247.92	267.85	9.00	9.00	0.00
Niobrara									
7,100.00	62.02	179.55	6,956.61	-280.13	-247.84	278.18	9.00	9.00	0.00
7,200.00	71.02	179.55	6,996.41	-371.76	-247.12	369.81	9.00	9.00	0.00
7,254.90	75.97	179.55	7,012.00	-424.38	-246.70	422.43	9.00	9.00	0.00
Nio B									
7,300.00	80.02	179.55	7,021.38	-468.48	-246.35	466.53	9.00	9.00	0.00
7,400.00	89.02	179.55	7,030.91	-567.92	-245.56	565.97	9.00	9.00	0.00
7,410.59	89.98	179.55	7,031.00	-578.51	-245.48	576.56	9.00	9.00	0.00
End Build @ 7410.59ft - Top of Production									
7,500.00	89.98	179.55	7,031.04	-667.92	-244.77	665.97	0.00	0.00	0.00
7,600.00	89.98	179.55	7,031.08	-767.91	-243.98	765.97	0.00	0.00	0.00
7,700.00	89.98	179.55	7,031.12	-867.91	-243.18	865.97	0.00	0.00	0.00

Corporate Planning Report

Database:	PLANNING	Local Co-ordinate Reference:	Well ZELDA 25-4HZ
Company:	US ROCKIES WATTENBERG PLANNING	TVD Reference:	RKB = 17' @ 4920.00usft (Drilling Rig)
Project:	WELD-NAD83-UTMFT13N	MD Reference:	RKB = 17' @ 4920.00usft (Drilling Rig)
Site:	2N-65W-25 Zelda 29-25HZ Pad	North Reference:	True
Well:	ZELDA 25-4HZ	Survey Calculation Method:	Minimum Curvature
Wellbore:	Plan A		
Design:	Permit Rev-1		

Planned Survey									
Measured Depth (usft)	Inclination (°)	Azimuth (°)	Vertical Depth (usft)	+N/-S (usft)	+E/-W (usft)	Vertical Section (usft)	Dogleg Rate (°/100usft)	Build Rate (°/100usft)	Turn Rate (°/100usft)
7,800.00	89.98	179.55	7,031.16	-967.91	-242.39	965.97	0.00	0.00	0.00
7,900.00	89.98	179.55	7,031.20	-1,067.90	-241.60	1,065.97	0.00	0.00	0.00
8,000.00	89.98	179.55	7,031.24	-1,167.90	-240.80	1,165.97	0.00	0.00	0.00
8,100.00	89.98	179.55	7,031.28	-1,267.90	-240.01	1,265.97	0.00	0.00	0.00
8,200.00	89.98	179.55	7,031.32	-1,367.89	-239.22	1,365.97	0.00	0.00	0.00
8,300.00	89.98	179.55	7,031.36	-1,467.89	-238.43	1,465.97	0.00	0.00	0.00
8,400.00	89.98	179.55	7,031.40	-1,567.89	-237.63	1,565.97	0.00	0.00	0.00
8,500.00	89.98	179.55	7,031.44	-1,667.88	-236.84	1,665.97	0.00	0.00	0.00
8,600.00	89.98	179.55	7,031.48	-1,767.88	-236.05	1,765.97	0.00	0.00	0.00
8,700.00	89.98	179.55	7,031.52	-1,867.88	-235.25	1,865.97	0.00	0.00	0.00
8,800.00	89.98	179.55	7,031.56	-1,967.88	-234.46	1,965.97	0.00	0.00	0.00
8,900.00	89.98	179.55	7,031.60	-2,067.87	-233.67	2,065.97	0.00	0.00	0.00
9,000.00	89.98	179.55	7,031.64	-2,167.87	-232.88	2,165.97	0.00	0.00	0.00
9,100.00	89.98	179.55	7,031.68	-2,267.87	-232.08	2,265.97	0.00	0.00	0.00
9,200.00	89.98	179.55	7,031.72	-2,367.86	-231.29	2,365.97	0.00	0.00	0.00
9,300.00	89.98	179.55	7,031.76	-2,467.86	-230.50	2,465.97	0.00	0.00	0.00
9,400.00	89.98	179.55	7,031.80	-2,567.86	-229.70	2,565.97	0.00	0.00	0.00
9,500.00	89.98	179.55	7,031.84	-2,667.85	-228.91	2,665.97	0.00	0.00	0.00
9,600.00	89.98	179.55	7,031.88	-2,767.85	-228.12	2,765.97	0.00	0.00	0.00
9,700.00	89.98	179.55	7,031.92	-2,867.85	-227.33	2,865.97	0.00	0.00	0.00
9,800.00	89.98	179.55	7,031.96	-2,967.84	-226.53	2,965.97	0.00	0.00	0.00
9,900.00	89.98	179.55	7,032.00	-3,067.84	-225.74	3,065.97	0.00	0.00	0.00
10,000.00	89.98	179.55	7,032.04	-3,167.84	-224.95	3,165.97	0.00	0.00	0.00
10,100.00	89.98	179.55	7,032.07	-3,267.83	-224.15	3,265.97	0.00	0.00	0.00
10,200.00	89.98	179.55	7,032.11	-3,367.83	-223.36	3,365.97	0.00	0.00	0.00
10,300.00	89.98	179.55	7,032.15	-3,467.83	-222.57	3,465.97	0.00	0.00	0.00
10,400.00	89.98	179.55	7,032.19	-3,567.82	-221.78	3,565.97	0.00	0.00	0.00
10,500.00	89.98	179.55	7,032.23	-3,667.82	-220.98	3,665.97	0.00	0.00	0.00
10,600.00	89.98	179.55	7,032.27	-3,767.82	-220.19	3,765.97	0.00	0.00	0.00
10,700.00	89.98	179.55	7,032.31	-3,867.82	-219.40	3,865.97	0.00	0.00	0.00
10,800.00	89.98	179.55	7,032.35	-3,967.81	-218.60	3,965.97	0.00	0.00	0.00
10,900.00	89.98	179.55	7,032.39	-4,067.81	-217.81	4,065.97	0.00	0.00	0.00
11,000.00	89.98	179.55	7,032.43	-4,167.81	-217.02	4,165.97	0.00	0.00	0.00
11,100.00	89.98	179.55	7,032.47	-4,267.80	-216.23	4,265.97	0.00	0.00	0.00
11,200.00	89.98	179.55	7,032.51	-4,367.80	-215.43	4,365.97	0.00	0.00	0.00
11,300.00	89.98	179.55	7,032.55	-4,467.80	-214.64	4,465.97	0.00	0.00	0.00
11,400.00	89.98	179.55	7,032.59	-4,567.79	-213.85	4,565.97	0.00	0.00	0.00
11,500.00	89.98	179.55	7,032.63	-4,667.79	-213.05	4,665.97	0.00	0.00	0.00
11,600.00	89.98	179.55	7,032.67	-4,767.79	-212.26	4,765.97	0.00	0.00	0.00
11,700.00	89.98	179.55	7,032.71	-4,867.78	-211.47	4,865.97	0.00	0.00	0.00
11,800.00	89.98	179.55	7,032.75	-4,967.78	-210.68	4,965.97	0.00	0.00	0.00
11,900.00	89.98	179.55	7,032.79	-5,067.78	-209.88	5,065.97	0.00	0.00	0.00
12,000.00	89.98	179.55	7,032.83	-5,167.77	-209.09	5,165.97	0.00	0.00	0.00
12,100.00	89.98	179.55	7,032.87	-5,267.77	-208.30	5,265.97	0.00	0.00	0.00
12,200.00	89.98	179.55	7,032.91	-5,367.77	-207.50	5,365.97	0.00	0.00	0.00
12,300.00	89.98	179.55	7,032.95	-5,467.76	-206.71	5,465.97	0.00	0.00	0.00
12,400.00	89.98	179.55	7,032.99	-5,567.76	-205.92	5,565.97	0.00	0.00	0.00
12,500.00	89.98	179.55	7,033.03	-5,667.76	-205.13	5,665.97	0.00	0.00	0.00
12,600.00	89.98	179.55	7,033.07	-5,767.76	-204.33	5,765.97	0.00	0.00	0.00
12,700.00	89.98	179.55	7,033.11	-5,867.75	-203.54	5,865.97	0.00	0.00	0.00
12,800.00	89.98	179.55	7,033.15	-5,967.75	-202.75	5,965.97	0.00	0.00	0.00
12,900.00	89.98	179.55	7,033.19	-6,067.75	-201.96	6,065.97	0.00	0.00	0.00
13,000.00	89.98	179.55	7,033.23	-6,167.74	-201.16	6,165.97	0.00	0.00	0.00
13,100.00	89.98	179.55	7,033.27	-6,267.74	-200.37	6,265.97	0.00	0.00	0.00

Corporate Planning Report

Database:	PLANNING	Local Co-ordinate Reference:	Well ZELDA 25-4HZ
Company:	US ROCKIES WATTENBERG PLANNING	TVD Reference:	RKB = 17' @ 4920.00usft (Drilling Rig)
Project:	WELD-NAD83-UTMFT13N	MD Reference:	RKB = 17' @ 4920.00usft (Drilling Rig)
Site:	2N-65W-25 Zelda 29-25HZ Pad	North Reference:	True
Well:	ZELDA 25-4HZ	Survey Calculation Method:	Minimum Curvature
Wellbore:	Plan A		
Design:	Permit Rev-1		

Planned Survey									
Measured Depth (usft)	Inclination (°)	Azimuth (°)	Vertical Depth (usft)	+N/-S (usft)	+E/-W (usft)	Vertical Section (usft)	Dogleg Rate (°/100usft)	Build Rate (°/100usft)	Turn Rate (°/100usft)
13,200.00	89.98	179.55	7,033.31	-6,367.74	-199.58	6,365.97	0.00	0.00	0.00
13,300.00	89.98	179.55	7,033.35	-6,467.73	-198.78	6,465.97	0.00	0.00	0.00
13,400.00	89.98	179.55	7,033.39	-6,567.73	-197.99	6,565.97	0.00	0.00	0.00
13,500.00	89.98	179.55	7,033.43	-6,667.73	-197.20	6,665.97	0.00	0.00	0.00
13,600.00	89.98	179.55	7,033.47	-6,767.72	-196.41	6,765.97	0.00	0.00	0.00
13,700.00	89.98	179.55	7,033.51	-6,867.72	-195.61	6,865.97	0.00	0.00	0.00
13,800.00	89.98	179.55	7,033.55	-6,967.72	-194.82	6,965.97	0.00	0.00	0.00
13,900.00	89.98	179.55	7,033.59	-7,067.71	-194.03	7,065.97	0.00	0.00	0.00
14,000.00	89.98	179.55	7,033.63	-7,167.71	-193.23	7,165.97	0.00	0.00	0.00
14,100.00	89.98	179.55	7,033.67	-7,267.71	-192.44	7,265.97	0.00	0.00	0.00
14,200.00	89.98	179.55	7,033.71	-7,367.71	-191.65	7,365.97	0.00	0.00	0.00
14,300.00	89.98	179.55	7,033.75	-7,467.70	-190.86	7,465.97	0.00	0.00	0.00
14,400.00	89.98	179.55	7,033.79	-7,567.70	-190.06	7,565.97	0.00	0.00	0.00
14,500.00	89.98	179.55	7,033.83	-7,667.70	-189.27	7,665.97	0.00	0.00	0.00
14,600.00	89.98	179.55	7,033.87	-7,767.69	-188.48	7,765.97	0.00	0.00	0.00
14,700.00	89.98	179.55	7,033.91	-7,867.69	-187.68	7,865.97	0.00	0.00	0.00
14,800.00	89.98	179.55	7,033.95	-7,967.69	-186.89	7,965.97	0.00	0.00	0.00
14,900.00	89.98	179.55	7,033.99	-8,067.68	-186.10	8,065.97	0.00	0.00	0.00
15,000.00	89.98	179.55	7,034.03	-8,167.68	-185.31	8,165.97	0.00	0.00	0.00
15,100.00	89.98	179.55	7,034.07	-8,267.68	-184.51	8,265.97	0.00	0.00	0.00
15,200.00	89.98	179.55	7,034.11	-8,367.67	-183.72	8,365.97	0.00	0.00	0.00
15,300.00	89.98	179.55	7,034.15	-8,467.67	-182.93	8,465.97	0.00	0.00	0.00
15,400.00	89.98	179.55	7,034.19	-8,567.67	-182.13	8,565.97	0.00	0.00	0.00
15,500.00	89.98	179.55	7,034.23	-8,667.66	-181.34	8,665.97	0.00	0.00	0.00
15,600.00	89.98	179.55	7,034.27	-8,767.66	-180.55	8,765.97	0.00	0.00	0.00
15,700.00	89.98	179.55	7,034.31	-8,867.66	-179.76	8,865.97	0.00	0.00	0.00
15,800.00	89.98	179.55	7,034.35	-8,967.65	-178.96	8,965.97	0.00	0.00	0.00
15,900.00	89.98	179.55	7,034.39	-9,067.65	-178.17	9,065.97	0.00	0.00	0.00
16,000.00	89.98	179.55	7,034.43	-9,167.65	-177.38	9,165.97	0.00	0.00	0.00
16,100.00	89.98	179.55	7,034.47	-9,267.65	-176.58	9,265.97	0.00	0.00	0.00
16,200.00	89.98	179.55	7,034.51	-9,367.64	-175.79	9,365.97	0.00	0.00	0.00
16,300.00	89.98	179.55	7,034.54	-9,467.64	-175.00	9,465.97	0.00	0.00	0.00
16,400.00	89.98	179.55	7,034.58	-9,567.64	-174.21	9,565.97	0.00	0.00	0.00
16,500.00	89.98	179.55	7,034.62	-9,667.63	-173.41	9,665.97	0.00	0.00	0.00
16,600.00	89.98	179.55	7,034.66	-9,767.63	-172.62	9,765.97	0.00	0.00	0.00
16,700.00	89.98	179.55	7,034.70	-9,867.63	-171.83	9,865.97	0.00	0.00	0.00
16,800.00	89.98	179.55	7,034.74	-9,967.62	-171.03	9,965.97	0.00	0.00	0.00
16,900.00	89.98	179.55	7,034.78	-10,067.62	-170.24	10,065.97	0.00	0.00	0.00
17,000.00	89.98	179.55	7,034.82	-10,167.62	-169.45	10,165.97	0.00	0.00	0.00
17,100.00	89.98	179.55	7,034.86	-10,267.61	-168.66	10,265.97	0.00	0.00	0.00
17,200.00	89.98	179.55	7,034.90	-10,367.61	-167.86	10,365.97	0.00	0.00	0.00
17,300.00	89.98	179.55	7,034.94	-10,467.61	-167.07	10,465.97	0.00	0.00	0.00
17,400.00	89.98	179.55	7,034.98	-10,567.60	-166.28	10,565.97	0.00	0.00	0.00
17,442.59	89.98	179.55	7,035.00	-10,610.19	-165.94	10,608.56	0.00	0.00	0.00
TD Well @ 17442.59ft									

Corporate Planning Report

Database:	PLANNING	Local Co-ordinate Reference:	Well ZELDA 25-4HZ
Company:	US ROCKIES WATTENBERG PLANNING	TVD Reference:	RKB = 17' @ 4920.00usft (Drilling Rig)
Project:	WELD-NAD83-UTMFT13N	MD Reference:	RKB = 17' @ 4920.00usft (Drilling Rig)
Site:	2N-65W-25 Zelda 29-25HZ Pad	North Reference:	True
Well:	ZELDA 25-4HZ	Survey Calculation Method:	Minimum Curvature
Wellbore:	Plan A		
Design:	Permit Rev-1		

Casing Points					
	Measured Depth (usft)	Vertical Depth (usft)	Name	Casing Diameter (")	Hole Diameter (")
	1,508.79	1,500.00	9 5/8" Csg	9-5/8	13-1/2
	7,410.59	7,031.00	Top of Production	5-1/2	7-7/8

Formations						
	Measured Depth (usft)	Vertical Depth (usft)	Name	Lithology	Dip (°)	Dip Direction (°)
	1,379.53	1,372.00	Fox Hills			
	3,983.46	3,967.00	Parkman			
	4,436.46	4,420.00	Sussex			
	7,013.54	6,911.00	Sharon Springs			
	7,088.24	6,951.00	Niobrara			
	7,254.90	7,012.00	Nio B			

Plan Annotations					
	Measured Depth (usft)	Vertical Depth (usft)	Local Coordinates		Comment
			+N/-S (usft)	+E/-W (usft)	
	250.00	250.00	0.00	0.00	Start Build 1.50
	783.33	781.60	8.36	-36.22	Start 1380.00 hold at 783.33 MD
	2,163.33	2,148.17	51.57	-223.36	Start Drop -2.00
	2,563.33	2,546.87	57.84	-250.52	Start 3847.51 hold at 2563.33 MD
	6,410.84	6,394.38	57.84	-250.52	KOP @ 6410.84ft
	6,950.00	6,871.36	-157.14	-248.82	DLS = 9°/100'
	7,410.59	7,031.00	-578.51	-245.48	End Build @ 7410.59ft
	17,442.59	7,035.00	-10,610.19	-165.94	TD Well @ 17442.59ft