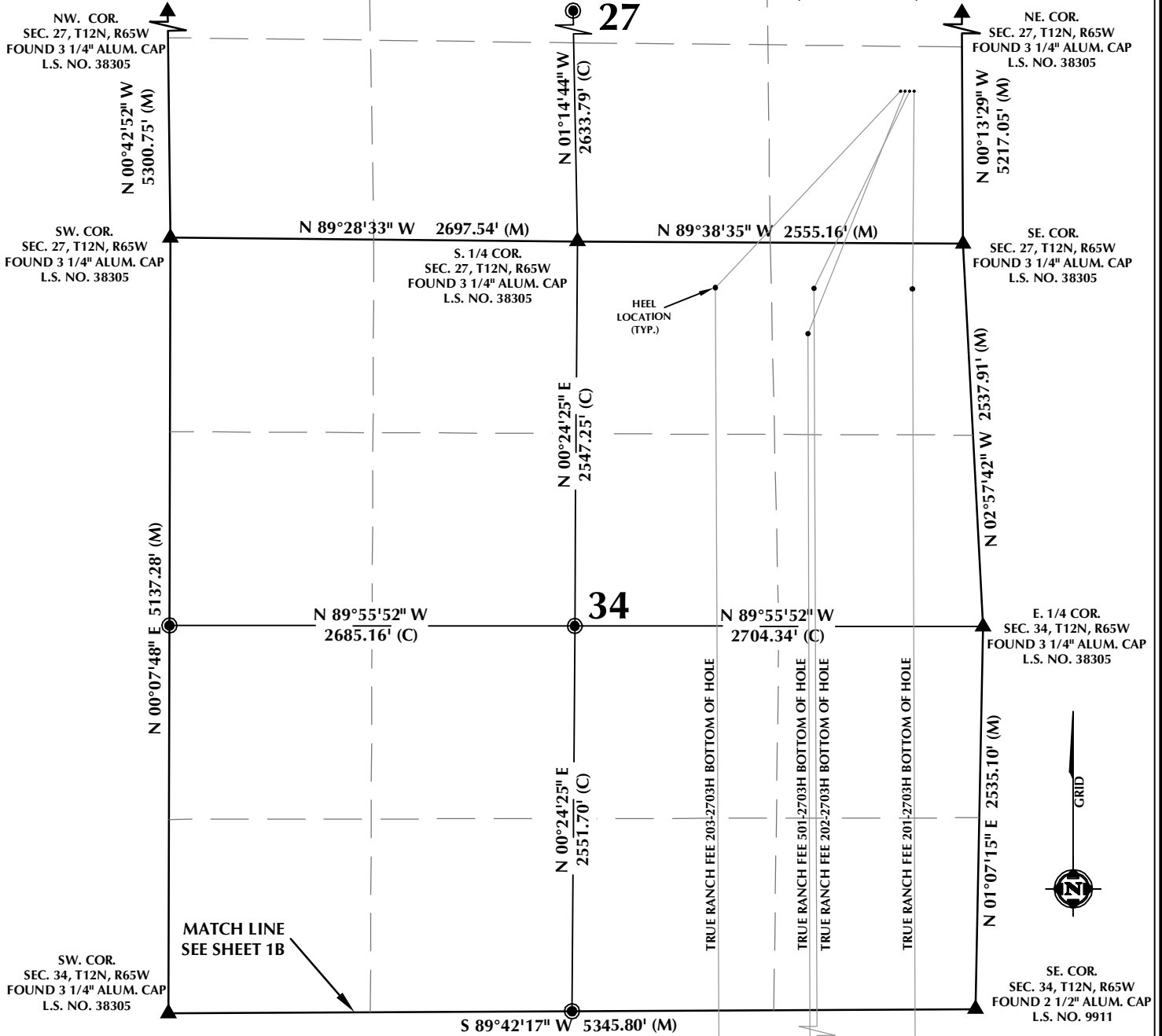


MULTI-WELL PLAN SECTIONS 27 & 34, T12N, R65W



WELL NOTES:

TRUE RANCH FEE 203-2703H
SURFACE: 1010' FSL, 410' FEL, SEC. 27, T12N, R65W
BOTTOM HOLE: 300' FSL, 1648' FEL, SEC. 3, T11N, R65W

TRUE RANCH FEE 501-2703H
SURFACE: 1010' FSL, 380' FEL, SEC. 27, T12N, R65W
BOTTOM HOLE: 600' FSL, 1049' FEL, SEC. 3, T11N, R65W

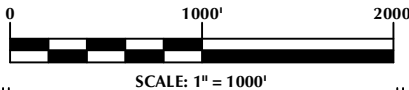
TRUE RANCH FEE 202-2703H
SURFACE: 1010' FSL, 350' FEL, SEC. 27, T12N, R65W
BOTTOM HOLE: 300' FSL, 999' FEL, SEC. 3, T11N, R65W

TRUE RANCH FEE 201-2703H
SURFACE: 1010' FSL, 320' FEL, SEC. 27, T12N, R65W
BOTTOM HOLE: 300' FSL, 350' FEL, SEC. 3, T11N, R65W

WELLBORES CONTINUE INTO
SECTION 3, T11N, R65W

NOTES:

- ▲ INDICATES SECTION CORNER.
 - INDICATES CALCULATED CORNER.
 - BASIS OF BEARING DERIVED FROM COLORADO COORDINATE SYSTEM OF 1983 NORTH ZONE.
 - ALL MEASURED DISTANCES ARE GRID.
- COMBINED SCALE FACTOR: .99975250 CALCULATED FROM THE S. 1/4 CORNER OF SECTION 27, T12N, R65W.
- WELL FOOTAGES ARE MEASURED AT RIGHT ANGLES TO THE SECTION LINES.



WELL PAD - TRUE RANCH FEE 27 EAST

MULTI-WELL PLAN
TRUE RANCH FEE 203-2703H, TRUE RANCH FEE 501-2703H,
TRUE RANCH FEE 202-2703H & TRUE RANCH FEE 201-2703H
LOCATED IN SECTIONS 27 & 34
T12N, R65W, 6TH P.M. &
LOCATED IN SECTION 3
T11N, R65W, 6TH P.M.
WELD COUNTY, COLORADO



CLEAR CREEK
Resource Partners

717 17th Street, Suite 1525
Denver, Colorado 80202



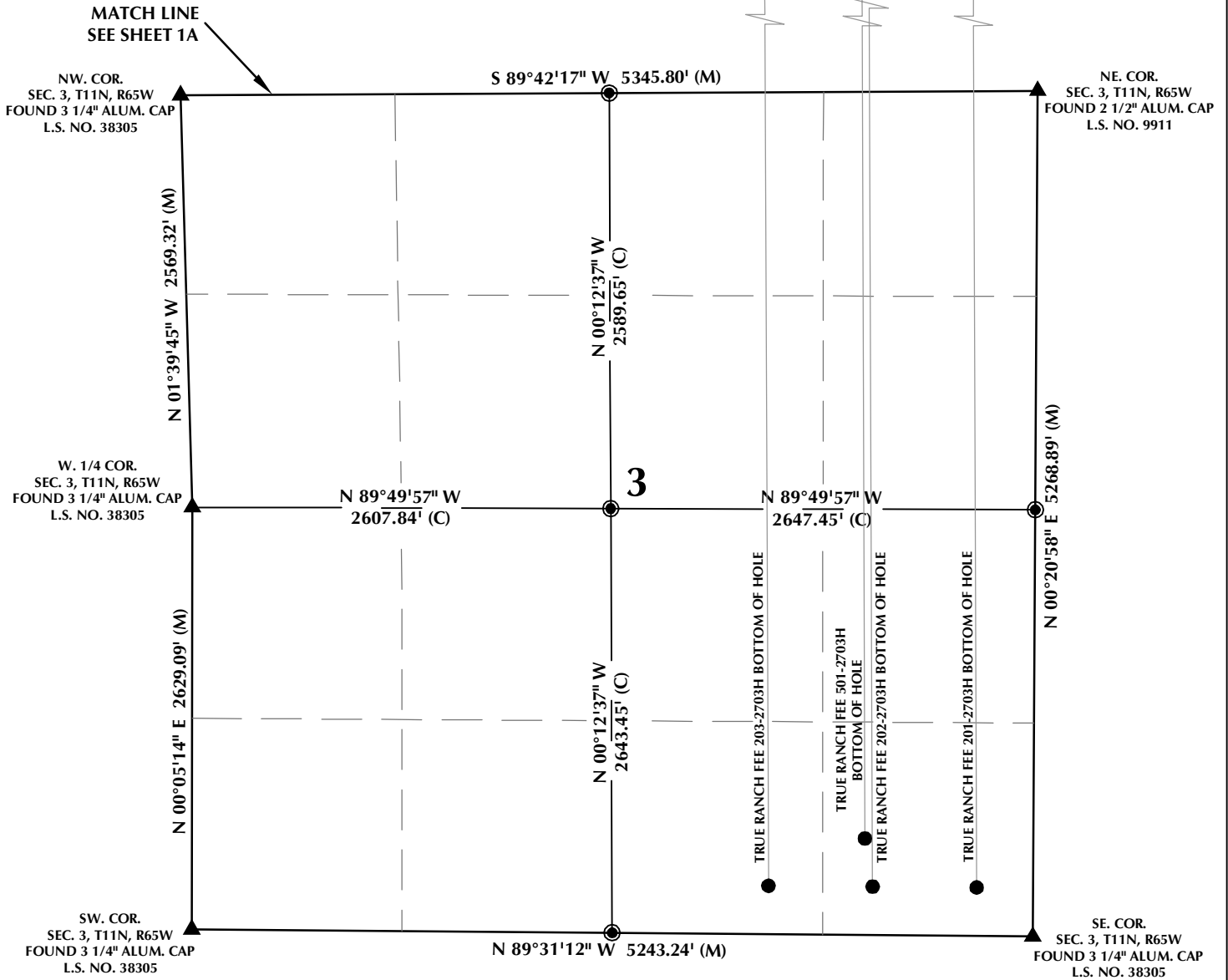
CONSULTING, LLC

SHERIDAN OFFICE
1095 Saberton Avenue
Sheridan, Wyoming 82801
Phone 307-674-0609

LOVELAND OFFICE
1635 Foxtrail Drive, Suite 204
Loveland, Colorado 80538
Phone 970-776-4331

DRAFTED BY:	LMO	CHECKED BY:	RKF	SHEET NO:
DATE DRAFTED:	11/1/17	DATE SURVEYED:	10/16/17	1A
REVISED:	11/16/17	FILE NAME:	17-191	1A OF 1

MULTI-WELL PLAN SECTION 3, T11N, R65W



WELL NOTES:

TRUE RANCH FEE 203-2703H
SURFACE: 1010' FSL, 410' FEL, SEC. 27, T12N, R65W
BOTTOM HOLE: 300' FSL, 1648' FEL, SEC. 3, T11N, R65W

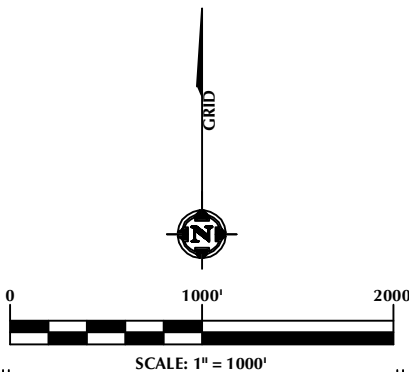
TRUE RANCH FEE 501-2703H
SURFACE: 1010' FSL, 380' FEL, SEC. 27, T12N, R65W
BOTTOM HOLE: 600' FSL, 1049' FEL, SEC. 3, T11N, R65W

TRUE RANCH FEE 202-2703H
SURFACE: 1010' FSL, 350' FEL, SEC. 27, T12N, R65W
BOTTOM HOLE: 300' FSL, 999' FEL, SEC. 3, T11N, R65W

TRUE RANCH FEE 201-2703H
SURFACE: 1010' FSL, 320' FEL, SEC. 27, T12N, R65W
BOTTOM HOLE: 300' FSL, 350' FEL, SEC. 3, T11N, R65W

NOTES:

- ▲ INDICATES SECTION CORNER.
- INDICATES CALCULATED CORNER.
- BASIS OF BEARING DERIVED FROM COLORADO COORDINATE SYSTEM OF 1983 NORTH ZONE.
- ALL MEASURED DISTANCES ARE GRID.
COMBINED SCALE FACTOR: .99975250 CALCULATED FROM THE S. 1/4 CORNER OF SECTION 27, T12N, R65W.
- WELL FOOTAGES ARE MEASURED AT RIGHT ANGLES TO THE SECTION LINES.



WELL PAD - TRUE RANCH FEE 27 EAST

MULTI-WELL PLAN
TRUE RANCH FEE 203-2703H, TRUE RANCH FEE 501-2703H,
TRUE RANCH FEE 202-2703H & TRUE RANCH FEE 201-2703H
LOCATED IN SECTIONS 27 & 34
T12N, R65W, 6TH P.M. &
LOCATED IN SECTION 3
T11N, R65W, 6TH P.M.
WELD COUNTY, COLORADO



CLEAR CREEK
Resource Partners

717 17th Street, Suite 1525
Denver, Colorado 80202



CONSULTING, LLC

SHERIDAN OFFICE
1095 Saberton Avenue
Sheridan, Wyoming 82801
Phone 307-674-0609

LOVELAND OFFICE
1635 Foxtrail Drive, Suite 204
Loveland, Colorado 80538
Phone 970-776-4331

DRAFTED BY:	LMO	CHECKED BY:	RKF	SHEET NO:
DATE DRAFTED:	11/1/17	DATE SURVEYED:	10/16/17	1B
REVISED:	11/16/17	FILE NAME:	17-191	1B OF 1