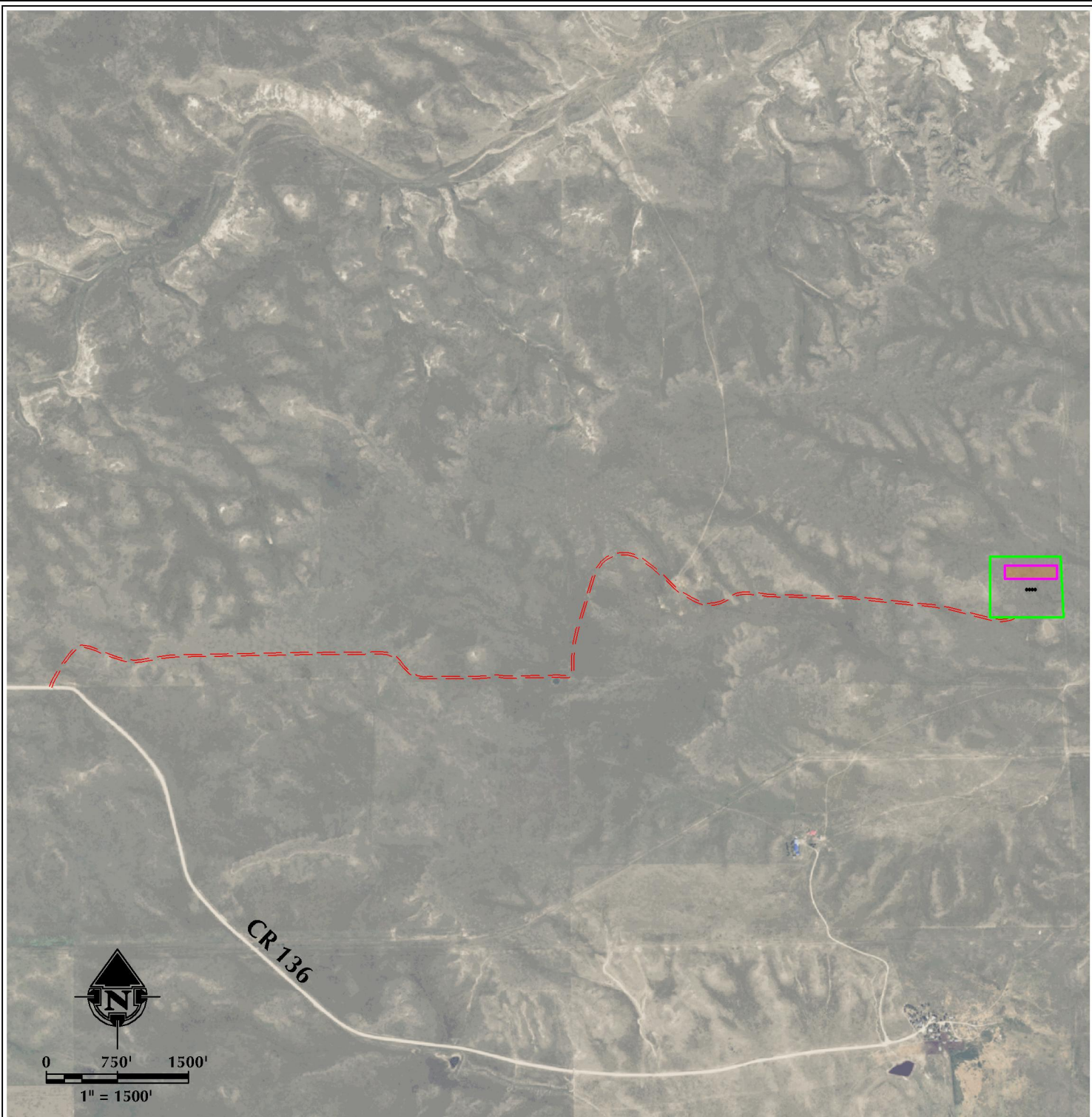


K:\CGRP\2017_19_BLACK_CO_CD\DISJ\DISJSECTION 27 T12N R65W\SECTION 27 T12N R65W.dwg, 11/3/2017 5:44:33 PM, sheet 31




LEGEND

- PROPOSED WELL
- ACCESS ROAD
- ▭ DISTURBANCE AREA
- ▭ PROPOSED FACILITY

PAD - TRUE RANCH FEE 27 EAST

ACCESS ROAD MAP
 TRUE RANCH FEE 203-2703H, TRUE RANCH FEE 501-2703H,
 TRUE RANCH FEE 202-2703H & TRUE RANCH FEE 201-2703H
 LOCATED IN SECTION 27
 T12N, R65W, 6TH P.M.
 WELD COUNTY, COLORADO

 **CLEAR CREEK**
 Resource Partners
 717 17th Street, Suite 1525
 Denver, Colorado 80202



CONSULTING, LLC

SHERIDAN OFFICE **LOVELAND OFFICE**
 1095 Saberton Avenue 1635 Foxtrail Drive, Suite 204
 Sheridan, Wyoming 82801 Loveland, Colorado 80538
 Phone 307-674-0609 Phone 970-776-4331

SCALE:	1" = 1500ft	NAD83 CO-Nft
DRAWN:	SRS	DATE: 11/3/17
REVISED:		DATE: