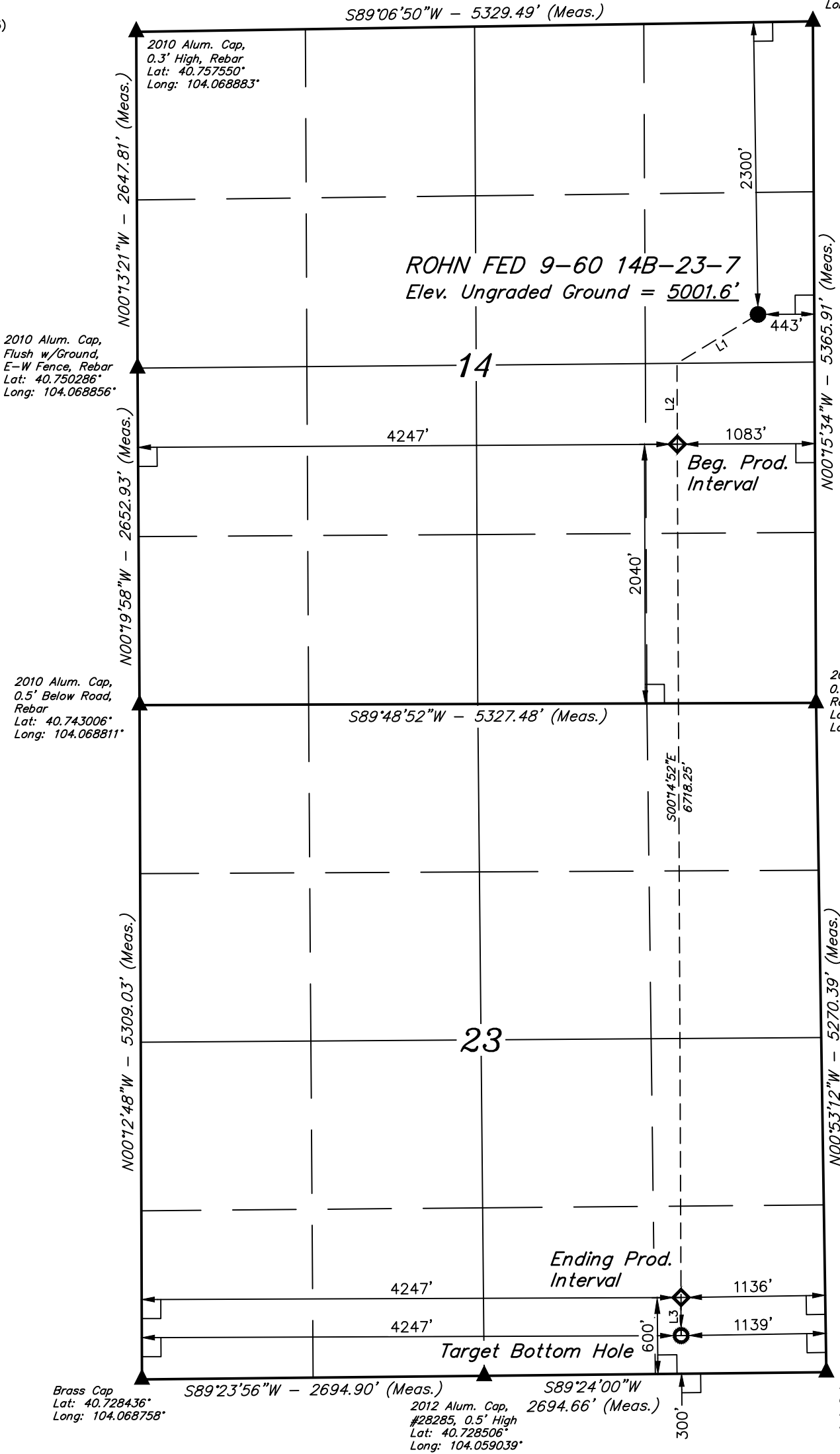


LEGEND:

- = 90° SYMBOL
- = PROPOSED WELLHEAD.
- = PRODUCTION INTERVAL.
- = TARGET BOTTOM HOLE.
- = SECTION CORNERS LOCATED. (NAD 83)

T9N, R60W, 6th P.M.

2010 Alum. Cap,
0.5' Below Road,
Rebar
Lat: 40.757761°
Long: 104.049653°



LINE TABLE		
LINE	DIRECTION	LENGTH
L1	S58°52'56"W	745.46'
L2	S00°14'52"E	636.85'
L3	S00°14'52"E	300.01'



PDOP = 1.6

CERTIFICATE
THIS IS TO CERTIFY THAT THE ABOVE MAP WAS PREPARED FROM FIELD NOTES OF ACTUAL SURVEYS MADE BY ME OR UNDER MY SUPERVISION, AND THAT THE SAME ARE TRUE AND CORRECT TO THE BEST OF MY KNOWLEDGE AND BELIEF.



SURFACE LOCATION 2300' FNL 443' FEL	BEG. PROD. INTERVAL 2040' FSL 4247' FWL 1083' FEL	ENDING PROD. INTERVAL 600' FSL 4247' FWL 1136' FEL	TARGET BOTTOM HOLE 300' FSL 4247' FWL 1139' FEL
NAD 83 (SURFACE LOCATION) LATITUDE = 40°45'05.15" (40.751431) LONGITUDE = 104°03'04.40" (104.051222)	NAD 83 (BEG. PROD. INTERVAL) LATITUDE = 40°44'55.06" (40.748628) LONGITUDE = 104°03'12.67" (104.053519)	NAD 83 (ENDING PROD. INTERVAL) LATITUDE = 40°43'48.69" (40.730192) LONGITUDE = 104°03'12.41" (104.053447)	NAD 83 (TARGET BOTTOM HOLE) LATITUDE = 40°43'45.73" (40.729369) LONGITUDE = 104°03'12.39" (104.053442)
NAD 27 (SURFACE LOCATION) LATITUDE = 40°45'05.20" (40.751444) LONGITUDE = 104°03'02.59" (104.050719)	NAD 27 (BEG. PROD. INTERVAL) LATITUDE = 40°44'55.11" (40.748642) LONGITUDE = 104°03'10.86" (104.053017)	NAD 27 (ENDING PROD. INTERVAL) LATITUDE = 40°43'48.74" (40.730206) LONGITUDE = 104°03'10.59" (104.052942)	NAD 27 (TARGET BOTTOM HOLE) LATITUDE = 40°43'45.78" (40.729383) LONGITUDE = 104°03'10.58" (104.052939)
STATE PLANE NAD 83 (CO. NORTH) N: 1519870.02 E: 3401389.70	STATE PLANE NAD 83 (CO. NORTH) N: 1518838.72 E: 3400769.88	STATE PLANE NAD 83 (CO. NORTH) N: 1512123.39 E: 3400900.08	STATE PLANE NAD 83 (CO. NORTH) N: 1511823.51 E: 3400905.90
STATE PLANE NAD 27 (CO. NORTH) N: 519868.07 E: 2401539.88	STATE PLANE NAD 27 (CO. NORTH) N: 518836.78 E: 2400920.04	STATE PLANE NAD 27 (CO. NORTH) N: 512121.57 E: 2401050.35	STATE PLANE NAD 27 (CO. NORTH) N: 511821.70 E: 2401056.17

BASIS OF BEARINGS
BASIS OF BEARINGS IS A G.P.S. OBSERVATION

BASIS OF ELEVATION
SPOT ELEVATION LOCATED AT THE NORTHEAST CORNER OF SECTION 2, T9N, R61W, 6th P.M., TAKEN FROM THE GROVER SOUTH, QUADRANGLE, COLORADO, WELD COUNTY, 7.5 MINUTE QUAD (TOPOGRAPHICAL MAP) PUBLISHED BY THE UNITED STATES DEPARTMENT OF THE INTERIOR, GEOLOGICAL SURVEY. SAID ELEVATION IS MARKED AS BEING 5043 FEET.



UELS, LLC
Corporate Office * 85 South 200 East
Vernal, UT 84078 * (435) 789-1017



BISON OIL & GAS II

ROHN FED 9-60 14B-23-7
SE 1/4 NE 1/4, SECTION 14, T9N, R60W, 6th P.M.
WELD COUNTY, COLORADO

SURVEYED BY	JAMES FRESHWATER, G.B.	09-14-17	SCALE
DRAWN BY	C.C.	09-19-17	1" = 1000'

WELL LOCATION PLAT