

# **BISON OIL & GAS II, LLC**

**WELD COUNTY, COLORADO (NAD 83)**

**SE NE SEC. 14 T9N R60W 6th P.M.**

**ROHN FED 9-60 14B-23-7**

**ORIGINAL WELLBORE**

**03 October, 2017**

**Plan: PROPOSAL #1**





Project: WELD COUNTY, COLORADO (NAD 83)  
Site: SE NE SEC. 14 T9N R60W 6th P.M.  
Well: ROHN FED 9-60 14B-23-7  
Wellbore: ORIGINAL WELLBORE  
Design: PROPOSAL #1

ANNOTATIONS										
TVD	MD	Inc	Azi	+N/-S	+E/-W	VSect	Dep	Annotation		
0.0	0.0	0.00	0.00	0.0	0.0	0.0	0.0	SHL: 2300ft FNL & 443ft FEL of Sec 14		
1700.0	1700.0	0.00	0.00	0.0	0.0	0.0	0.0	START NUDGE (2"/100ft BUR)		
2395.4	2402.4	14.05	234.92	-49.2	-70.1	54.5	85.7	EOB TO 14.05° INC		
4827.2	4909.2	14.05	234.92	-399.0	-568.1	441.1	694.2	END OF TANGENT		
5522.6	5611.6	0.00	0.00	-448.2	-638.2	495.6	779.9	EOD TO VERTICAL		
5622.6	5711.6	0.00	0.00	-448.2	-638.2	495.6	779.9	KOP (10"/100ft BUR)		
6195.6	6611.7	90.00	179.83	-1021.2	-636.5	1066.8	1352.9	BPI: 2040ft FSL & 1083ft FEL of Sec 14		
6195.6	13328.5	90.00	179.84	-7738.0	-616.7	7762.5	8069.7	EPI: 600ft FSL & 1136ft FEL of Sec 23		
6195.6	13331.8	90.00	179.74	-7741.3	-616.7	7765.8	8073.0	EOT TO 179.74° AZ		
6195.6	13628.4	90.00	179.73	-8037.9	-615.3	8061.4	8369.6	BHL: 300ft FSL & 1139ft FEL of Sec 23		

PROPOSED LOCAL COORDINATES:

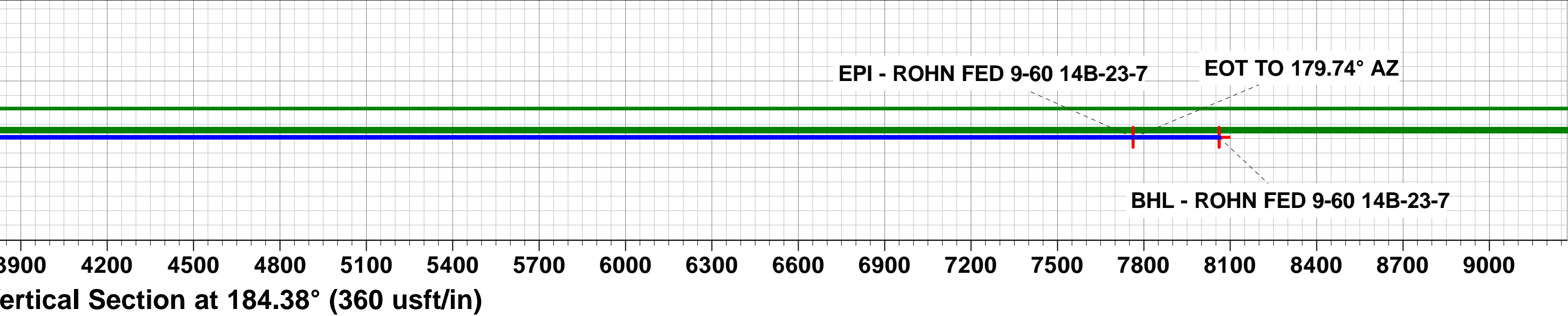
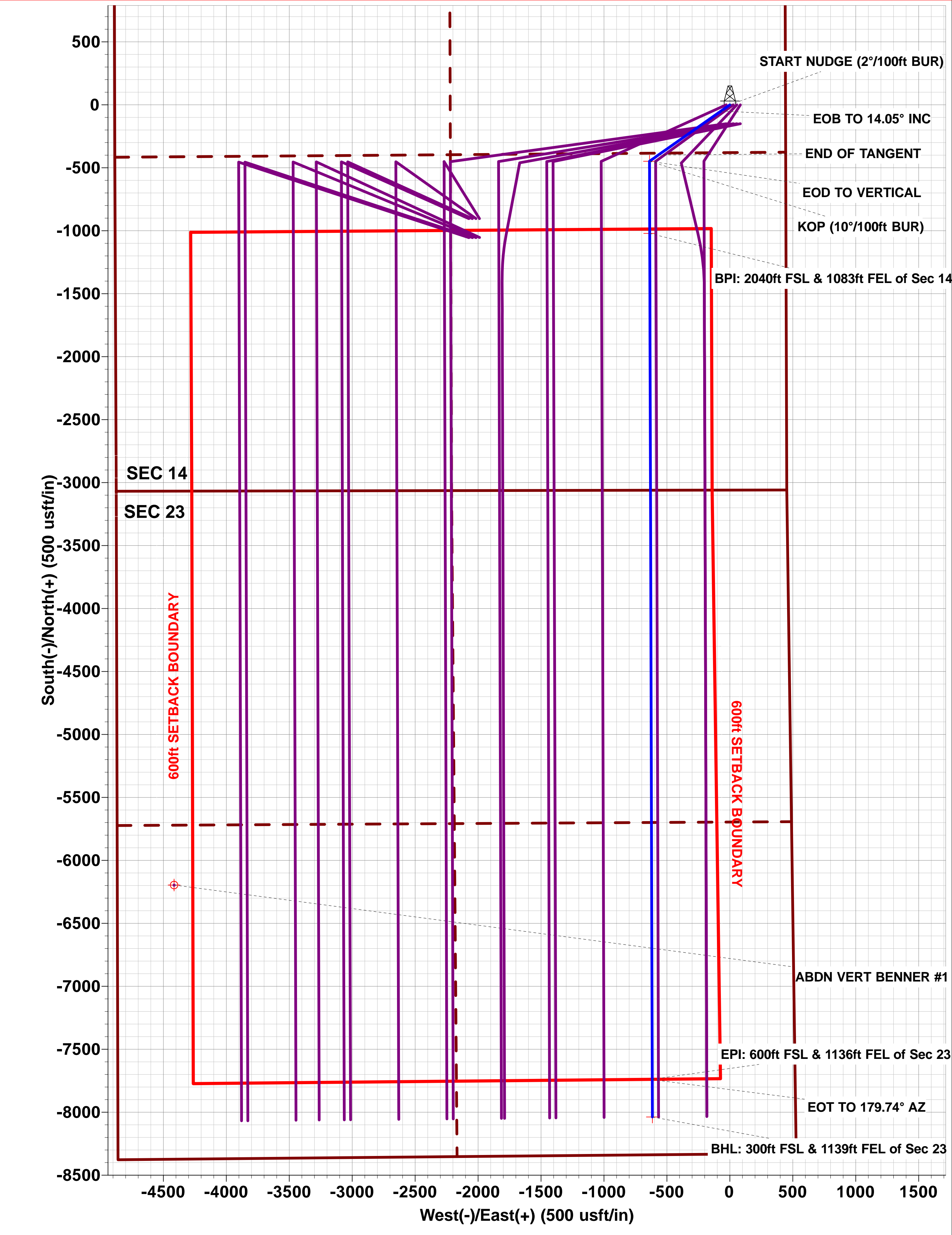
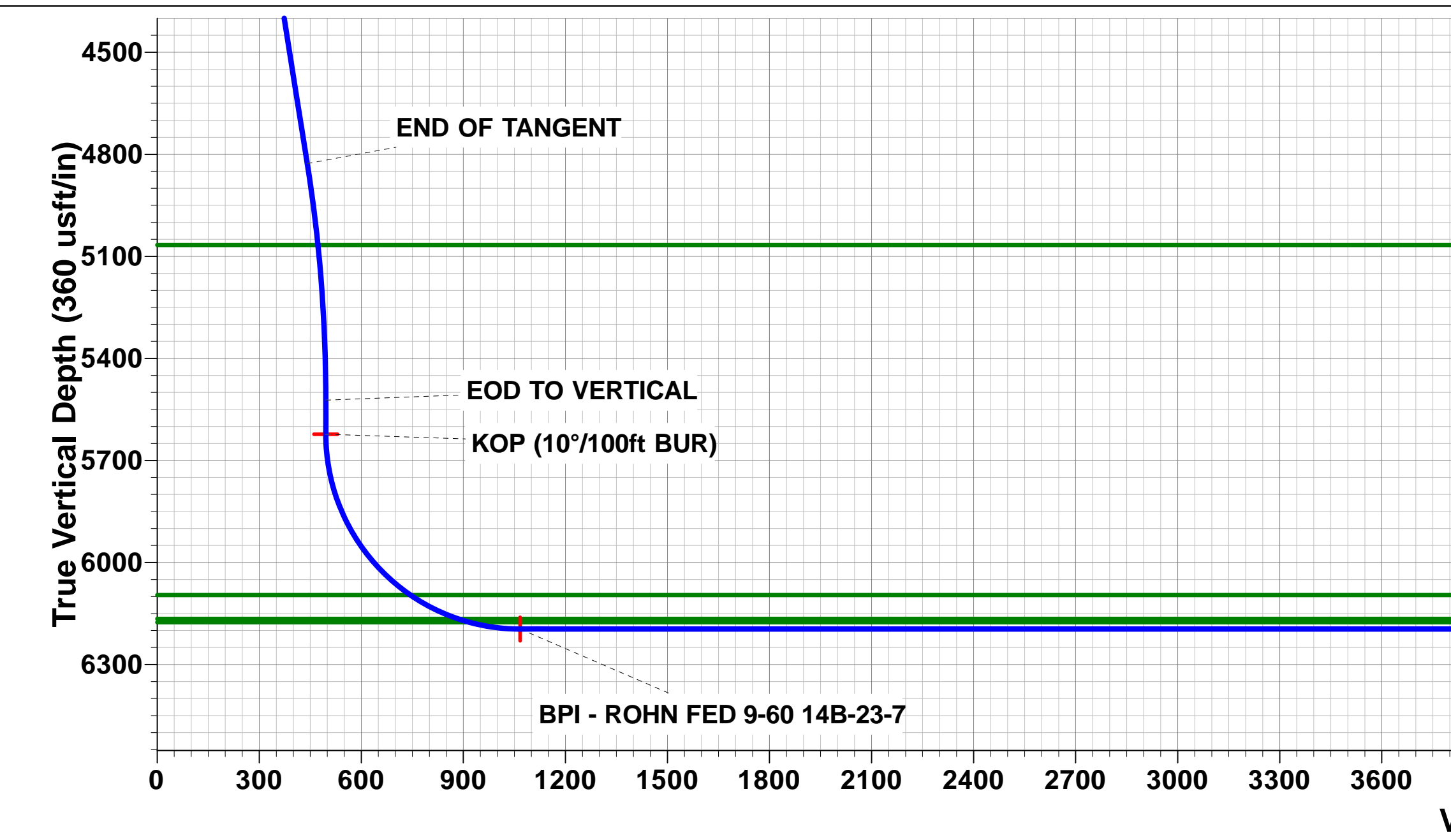
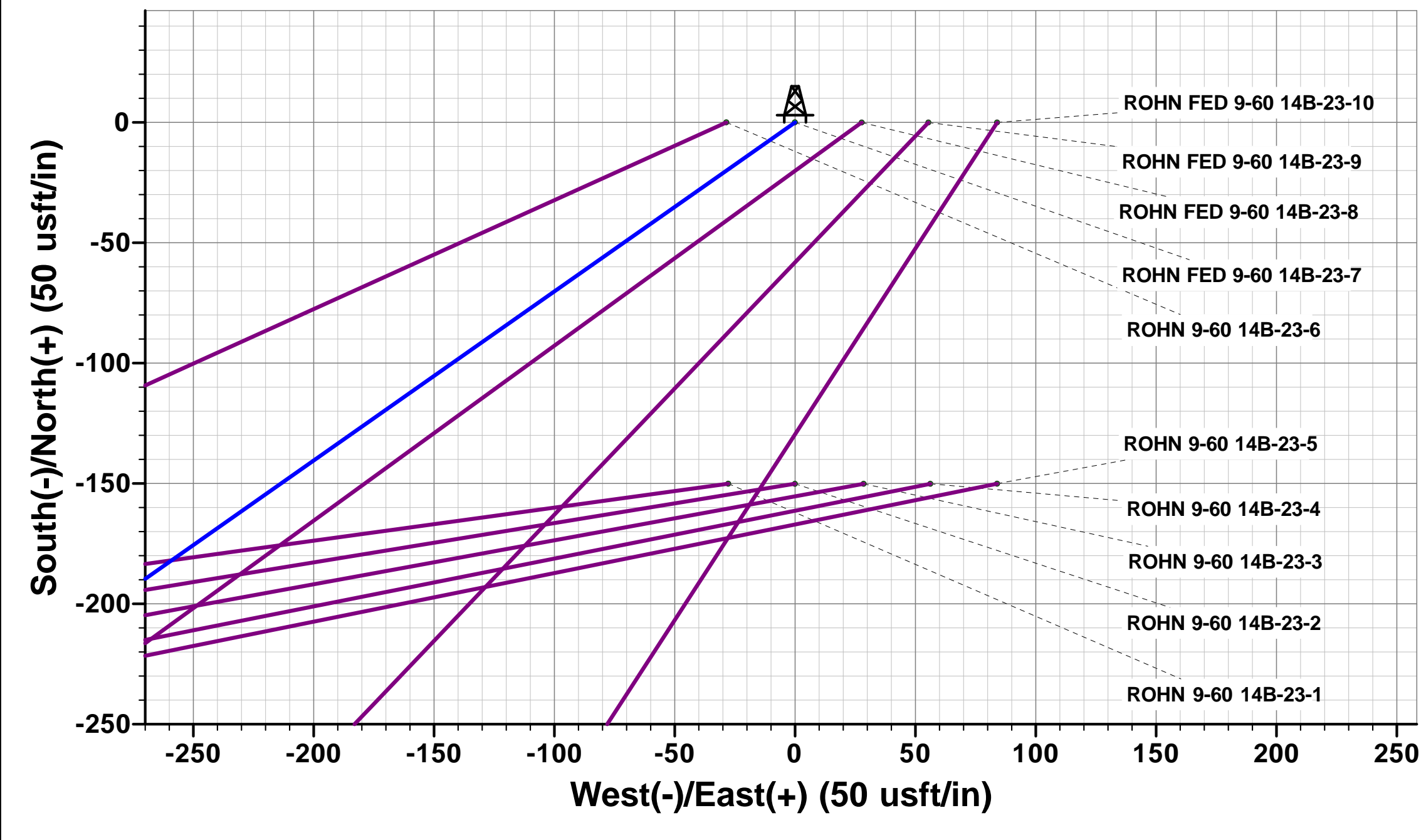
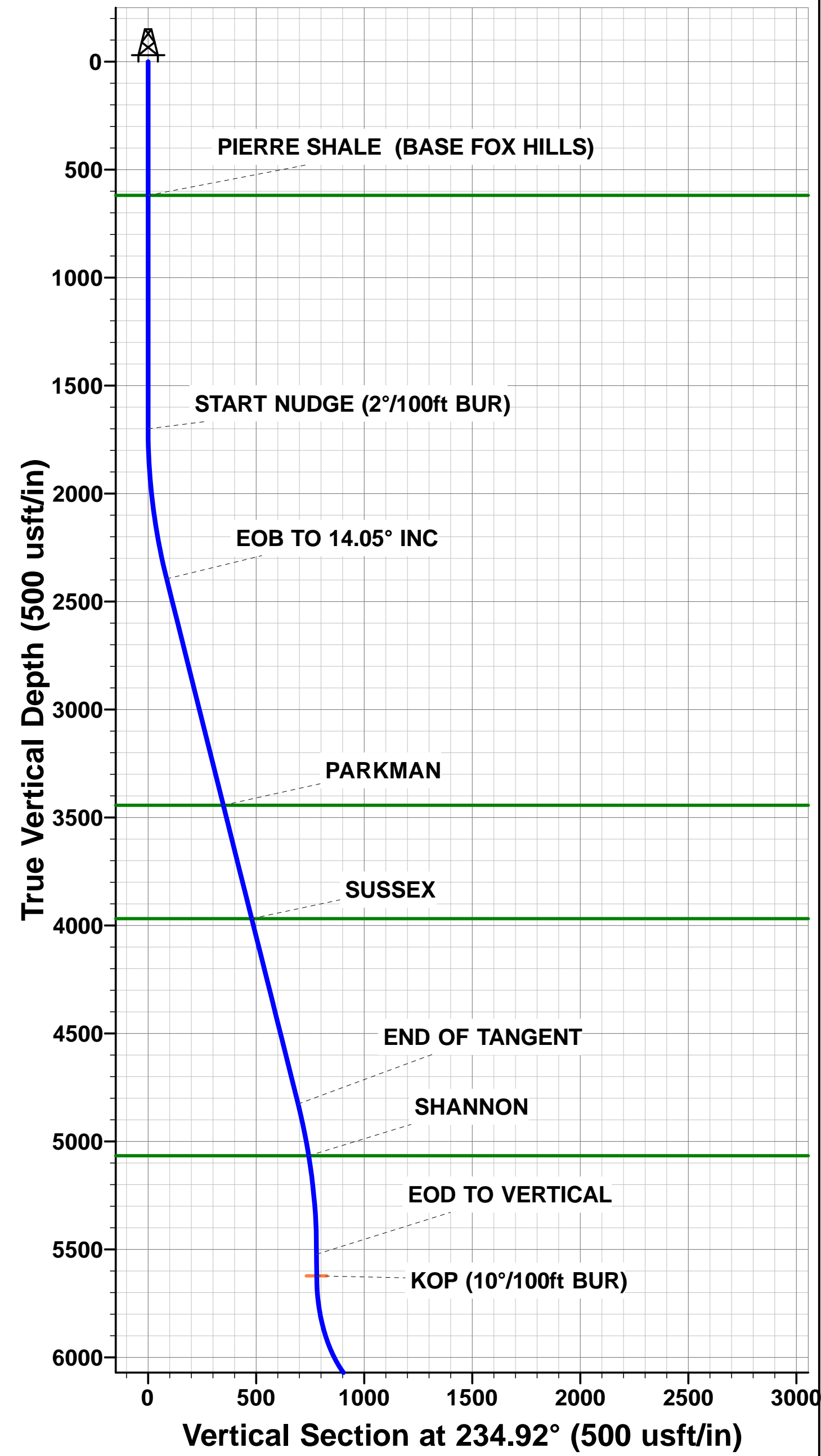
SHL: 2300ft FNL & 443ft FEL Sec 14

BPI: 2040ft FSL & 1083ft FEL Sec 14

EPI: 600ft FSL & 1136ft FEL Sec 23

BHL: 300ft FSL & 1139ft FEL of Sec 23

WELLBORE TARGET DETAILS (LAT/LONG)					
Name	TVD	+N/-S	+E/-W	Latitude	Longitude
KOP - ROHN FED 9-60 14B-23-7	5622.6	-448.2	-638.2	40.750201	-104.053525
BPI - ROHN FED 9-60 14B-23-7	6195.6	-1021.2	-636.5	40.748628	-104.053519
EPI - ROHN FED 9-60 14B-23-7	6195.6	-7738.0	-616.7	40.730192	-104.053447
BHL - ROHN FED 9-60 14B-23-7	6195.6	-8037.9	-615.3	40.729369	-104.053442



# Planning Report



<b>Database:</b>	EDM 5000.1 Single User Db	<b>Local Co-ordinate Reference:</b>	Well ROHN FED 9-60 14B-23-7
<b>Company:</b>	BISON OIL & GAS II, LLC	<b>TVD Reference:</b>	KB-EST @ 5026.6usft (Original Well Elev)
<b>Project:</b>	WELD COUNTY, COLORADO (NAD 83)	<b>MD Reference:</b>	KB-EST @ 5026.6usft (Original Well Elev)
<b>Site:</b>	SE NE SEC. 14 T9N R60W 6th P.M.	<b>North Reference:</b>	True
<b>Well:</b>	ROHN FED 9-60 14B-23-7	<b>Survey Calculation Method:</b>	Minimum Curvature
<b>Wellbore:</b>	ORIGINAL WELLBORE		
<b>Design:</b>	PROPOSAL #1		

<b>Project</b>	WELD COUNTY, COLORADO (NAD 83)		
<b>Map System:</b>	US State Plane 1983	<b>System Datum:</b>	Mean Sea Level
<b>Geo Datum:</b>	North American Datum 1983		
<b>Map Zone:</b>	Colorado Northern Zone		Using geodetic scale factor

<b>Site</b>	SE NE SEC. 14 T9N R60W 6th P.M.		
<b>Site Position:</b>		<b>Northing:</b>	1,519,719.85 usft
<b>From:</b>	Lat/Long	<b>Easting:</b>	3,401,364.79 usft
<b>Position Uncertainty:</b>	0.0 usft	<b>Slot Radius:</b>	1.10000 ft
		<b>Latitude:</b>	40.751019
		<b>Longitude:</b>	-104.051322
		<b>Grid Convergence:</b>	0.94 °

<b>Well</b>	ROHN FED 9-60 14B-23-7		
<b>Well Position</b>	<b>+N/-S</b>	150.1 usft	<b>Northing:</b>
	<b>+E/-W</b>	27.7 usft	<b>Easting:</b>
<b>Position Uncertainty</b>		0.0 usft	<b>Wellhead Elevation:</b>
			<b>Latitude:</b>
			<b>Longitude:</b>
			<b>Ground Level:</b>

<b>Wellbore</b>	ORIGINAL WELLBORE				
<b>Magnetics</b>	<b>Model Name</b>	<b>Sample Date</b>	<b>Declination (°)</b>	<b>Dip Angle (°)</b>	<b>Field Strength (nT)</b>
	IGRF2015	03/10/2017	7.82	67.23	52,611

<b>Design</b>	PROPOSAL #1			
<b>Audit Notes:</b>				
<b>Version:</b>	<b>Phase:</b>	PROTOTYPE	<b>Tie On Depth:</b>	0.0
<b>Vertical Section:</b>	<b>Depth From (TVD) (usft)</b>	<b>+N/-S (usft)</b>	<b>+E/-W (usft)</b>	<b>Direction (°)</b>
	0.0	0.0	0.0	184.38

<b>Plan Sections</b>											
MD (usft)	Inc (°)	Azi (°)	Vertical Depth	SS (usft)	+N/-S (usft)	+E/-W (usft)	Dogleg Rate (°/100usf)	Build Rate (°/100usf)	Turn Rate (°/100usf)	TFO (°)	Target
0.0	0.00	0.00	0.0	-5,026.6	0.0	0.0	0.00	0.00	0.00	0.00	
1,700.0	0.00	0.00	1,700.0	-3,326.6	0.0	0.0	0.00	0.00	0.00	0.00	
2,402.4	14.05	234.92	2,395.4	-2,631.2	-49.2	-70.1	2.00	2.00	0.00	234.92	
4,909.2	14.05	234.92	4,827.2	-199.4	-399.0	-568.1	0.00	0.00	0.00	0.00	
5,611.6	0.00	0.00	5,522.6	496.0	-448.2	-638.2	2.00	-2.00	0.00	180.00	
5,711.6	0.00	0.00	5,622.6	596.0	-448.2	-638.2	0.00	0.00	0.00	0.00	KOP - ROHN FED 9
6,611.7	90.00	179.83	6,195.6	1,169.0	-1,021.2	-636.5	10.00	10.00	19.98	179.83	BPI - ROHN FED 9
13,328.5	90.00	179.84	6,195.6	1,169.0	-7,738.0	-616.7	0.00	0.00	0.00	91.15	EPI - ROHN FED 9
13,331.8	90.00	179.74	6,195.6	1,169.0	-7,741.3	-616.7	3.00	0.00	-3.00	270.00	
13,628.4	90.00	179.73	6,195.6	1,169.0	-8,037.9	-615.3	0.00	0.00	0.00	-88.19	BHL - ROHN FED 9

## Planning Report



<b>Database:</b>	EDM 5000.1 Single User Db	<b>Local Co-ordinate Reference:</b>	Well ROHN FED 9-60 14B-23-7
<b>Company:</b>	BISON OIL & GAS II, LLC	<b>TVD Reference:</b>	KB-EST @ 5026.6usft (Original Well Elev)
<b>Project:</b>	WELD COUNTY, COLORADO (NAD 83)	<b>MD Reference:</b>	KB-EST @ 5026.6usft (Original Well Elev)
<b>Site:</b>	SE NE SEC. 14 T9N R60W 6th P.M.	<b>North Reference:</b>	True
<b>Well:</b>	ROHN FED 9-60 14B-23-7	<b>Survey Calculation Method:</b>	Minimum Curvature
<b>Wellbore:</b>	ORIGINAL WELLBORE		
<b>Design:</b>	PROPOSAL #1		

## Planned Survey

MD (usft)	Inc (°)	Azi (°)	TVD (usft)	SS (usft)	+N/-S (usft)	+E/-W (usft)	Vertical Section (usft)	Dogleg Rate (°/100usft)	Build Rate (°/100usft)	Turn Rate (°/100usft)
<b>SHL: 2300ft FNL &amp; 443ft FEL of Sec 14</b>										
0.0	0.00	0.00	0.0	5,026.60	0.0	0.0	0.0	0.00	0.00	0.00
100.0	0.00	0.00	100.0	4,926.60	0.0	0.0	0.0	0.00	0.00	0.00
200.0	0.00	0.00	200.0	4,826.60	0.0	0.0	0.0	0.00	0.00	0.00
300.0	0.00	0.00	300.0	4,726.60	0.0	0.0	0.0	0.00	0.00	0.00
400.0	0.00	0.00	400.0	4,626.60	0.0	0.0	0.0	0.00	0.00	0.00
500.0	0.00	0.00	500.0	4,526.60	0.0	0.0	0.0	0.00	0.00	0.00
600.0	0.00	0.00	600.0	4,426.60	0.0	0.0	0.0	0.00	0.00	0.00
<b>PIERRE SHALE (BASE FOX HILLS)</b>										
619.6	0.00	0.00	619.6	4,407.00	0.0	0.0	0.0	0.00	0.00	0.00
700.0	0.00	0.00	700.0	4,326.60	0.0	0.0	0.0	0.00	0.00	0.00
800.0	0.00	0.00	800.0	4,226.60	0.0	0.0	0.0	0.00	0.00	0.00
900.0	0.00	0.00	900.0	4,126.60	0.0	0.0	0.0	0.00	0.00	0.00
1,000.0	0.00	0.00	1,000.0	4,026.60	0.0	0.0	0.0	0.00	0.00	0.00
1,100.0	0.00	0.00	1,100.0	3,926.60	0.0	0.0	0.0	0.00	0.00	0.00
1,200.0	0.00	0.00	1,200.0	3,826.60	0.0	0.0	0.0	0.00	0.00	0.00
1,300.0	0.00	0.00	1,300.0	3,726.60	0.0	0.0	0.0	0.00	0.00	0.00
1,400.0	0.00	0.00	1,400.0	3,626.60	0.0	0.0	0.0	0.00	0.00	0.00
1,500.0	0.00	0.00	1,500.0	3,526.60	0.0	0.0	0.0	0.00	0.00	0.00
1,600.0	0.00	0.00	1,600.0	3,426.60	0.0	0.0	0.0	0.00	0.00	0.00
<b>START NUDGE (2°/100ft BUR)</b>										
1,700.0	0.00	0.00	1,700.0	3,326.60	0.0	0.0	0.0	0.00	0.00	0.00
1,800.0	2.00	234.92	1,800.0	3,226.62	-1.0	-1.4	1.1	2.00	2.00	0.00
1,900.0	4.00	234.92	1,899.8	3,126.76	-4.0	-5.7	4.4	2.00	2.00	0.00
2,000.0	6.00	234.92	1,999.5	3,027.15	-9.0	-12.8	10.0	2.00	2.00	0.00
2,100.0	8.00	234.92	2,098.7	2,927.90	-16.0	-22.8	17.7	2.00	2.00	0.00
2,200.0	10.00	234.92	2,197.5	2,829.13	-25.0	-35.6	27.7	2.00	2.00	0.00
2,300.0	12.00	234.92	2,295.6	2,730.98	-36.0	-51.2	39.8	2.00	2.00	0.00
2,400.0	14.00	234.92	2,393.1	2,633.54	-48.9	-69.6	54.1	2.00	2.00	0.00
<b>EOB TO 14.05° INC</b>										
2,402.4	14.05	234.92	2,395.4	2,631.20	-49.2	-70.1	54.5	2.00	2.00	0.00
2,500.0	14.05	234.92	2,490.1	2,536.54	-62.9	-89.5	69.5	0.00	0.00	0.00
2,600.0	14.05	234.92	2,587.1	2,439.53	-76.8	-109.4	84.9	0.00	0.00	0.00
2,700.0	14.05	234.92	2,684.1	2,342.52	-90.8	-129.2	100.4	0.00	0.00	0.00
2,800.0	14.05	234.92	2,781.1	2,245.51	-104.7	-149.1	115.8	0.00	0.00	0.00
2,900.0	14.05	234.92	2,878.1	2,148.50	-118.7	-169.0	131.2	0.00	0.00	0.00
3,000.0	14.05	234.92	2,975.1	2,051.49	-132.6	-188.8	146.6	0.00	0.00	0.00
3,100.0	14.05	234.92	3,072.1	1,954.48	-146.6	-208.7	162.1	0.00	0.00	0.00
3,200.0	14.05	234.92	3,169.1	1,857.47	-160.5	-228.6	177.5	0.00	0.00	0.00
3,300.0	14.05	234.92	3,266.1	1,760.46	-174.5	-248.4	192.9	0.00	0.00	0.00
3,400.0	14.05	234.92	3,363.1	1,663.45	-188.4	-268.3	208.3	0.00	0.00	0.00
<b>PARKMAN</b>										
3,482.9	14.05	234.92	3,443.6	1,583.00	-200.0	-284.8	221.1	0.00	0.00	0.00
3,500.0	14.05	234.92	3,460.2	1,566.44	-202.4	-288.2	223.8	0.00	0.00	0.00
3,600.0	14.05	234.92	3,557.2	1,469.43	-216.3	-308.0	239.2	0.00	0.00	0.00
3,700.0	14.05	234.92	3,654.2	1,372.43	-230.3	-327.9	254.6	0.00	0.00	0.00
3,800.0	14.05	234.92	3,751.2	1,275.42	-244.2	-347.7	270.0	0.00	0.00	0.00
3,900.0	14.05	234.92	3,848.2	1,178.41	-258.2	-367.6	285.5	0.00	0.00	0.00
4,000.0	14.05	234.92	3,945.2	1,081.40	-272.1	-387.5	300.9	0.00	0.00	0.00
<b>SUSSEX</b>										
4,024.1	14.05	234.92	3,968.6	1,058.00	-275.5	-392.3	304.6	0.00	0.00	0.00
4,100.0	14.05	234.92	4,042.2	984.39	-286.1	-407.3	316.3	0.00	0.00	0.00
4,200.0	14.05	234.92	4,139.2	887.38	-300.0	-427.2	331.7	0.00	0.00	0.00



# Planning Report



<b>Database:</b>	EDM 5000.1 Single User Db	<b>Local Co-ordinate Reference:</b>	Well ROHN FED 9-60 14B-23-7
<b>Company:</b>	BISON OIL & GAS II, LLC	<b>TVD Reference:</b>	KB-EST @ 5026.6usft (Original Well Elev)
<b>Project:</b>	WELD COUNTY, COLORADO (NAD 83)	<b>MD Reference:</b>	KB-EST @ 5026.6usft (Original Well Elev)
<b>Site:</b>	SE NE SEC. 14 T9N R60W 6th P.M.	<b>North Reference:</b>	True
<b>Well:</b>	ROHN FED 9-60 14B-23-7	<b>Survey Calculation Method:</b>	Minimum Curvature
<b>Wellbore:</b>	ORIGINAL WELLBORE		
<b>Design:</b>	PROPOSAL #1		

## Planned Survey

MD (usft)	Inc (°)	Azi (°)	TVD (usft)	SS (usft)	+N/-S (usft)	+E/-W (usft)	Vertical Section (usft)	Dogleg Rate (°/100usft)	Build Rate (°/100usft)	Turn Rate (°/100usft)
4,300.0	14.05	234.92	4,236.2	790.37	-314.0	-447.1	347.2	0.00	0.00	0.00
4,400.0	14.05	234.92	4,333.2	693.36	-327.9	-466.9	362.6	0.00	0.00	0.00
4,500.0	14.05	234.92	4,430.2	596.35	-341.9	-486.8	378.0	0.00	0.00	0.00
4,600.0	14.05	234.92	4,527.3	499.34	-355.8	-506.7	393.5	0.00	0.00	0.00
4,700.0	14.05	234.92	4,624.3	402.33	-369.8	-526.5	408.9	0.00	0.00	0.00
4,800.0	14.05	234.92	4,721.3	305.33	-383.7	-546.4	424.3	0.00	0.00	0.00
4,900.0	14.05	234.92	4,818.3	208.32	-397.7	-566.3	439.7	0.00	0.00	0.00
<b>END OF TANGENT</b>										
<b>4,909.2</b>	<b>14.05</b>	<b>234.92</b>	<b>4,827.2</b>	<b>199.40</b>	<b>-399.0</b>	<b>-568.1</b>	<b>441.1</b>	<b>0.00</b>	<b>0.00</b>	<b>0.00</b>
5,000.0	12.23	234.92	4,915.6	110.97	-410.8	-585.0	454.3	2.00	-2.00	0.00
5,100.0	10.23	234.92	5,013.7	12.89	-422.0	-600.9	466.6	2.00	-2.00	0.00
<b>SHANNON</b>										
<b>5,153.7</b>	<b>9.16</b>	<b>234.92</b>	<b>5,066.6</b>	<b>-40.00</b>	<b>-427.2</b>	<b>-608.3</b>	<b>472.4</b>	<b>2.00</b>	<b>-2.00</b>	<b>0.00</b>
5,200.0	8.23	234.92	5,112.4	-85.81	-431.2	-614.0	476.8	2.00	-2.00	0.00
5,300.0	6.23	234.92	5,211.6	-185.01	-438.5	-624.3	484.8	2.00	-2.00	0.00
5,400.0	4.23	234.92	5,311.2	-284.58	-443.7	-631.8	490.6	2.00	-2.00	0.00
5,500.0	2.23	234.92	5,411.0	-384.42	-446.9	-636.4	494.2	2.00	-2.00	0.00
5,600.0	0.23	234.92	5,511.0	-484.39	-448.2	-638.2	495.6	2.00	-2.00	0.00
<b>EOD TO VERTICAL</b>										
<b>5,611.6</b>	<b>0.00</b>	<b>0.00</b>	<b>5,522.6</b>	<b>-496.00</b>	<b>-448.2</b>	<b>-638.2</b>	<b>495.6</b>	<b>2.00</b>	<b>-2.00</b>	<b>0.00</b>
5,700.0	0.00	0.00	5,611.0	-584.39	-448.2	-638.2	495.6	0.00	0.00	0.00
<b>KOP (10°/100ft BUR)</b>										
<b>5,711.6</b>	<b>0.00</b>	<b>0.00</b>	<b>5,622.6</b>	<b>-596.00</b>	<b>-448.2</b>	<b>-638.2</b>	<b>495.6</b>	<b>0.00</b>	<b>0.00</b>	<b>0.00</b>
5,800.0	8.84	179.83	5,710.6	-684.04	-455.0	-638.2	502.4	10.00	10.00	0.00
5,900.0	18.84	179.83	5,807.6	-781.02	-478.9	-638.1	526.2	10.00	10.00	0.00
6,000.0	28.84	179.83	5,899.0	-872.37	-519.3	-638.0	566.4	10.00	10.00	0.00
6,100.0	38.84	179.83	5,981.9	-955.33	-574.9	-637.8	621.9	10.00	10.00	0.00
6,200.0	48.84	179.83	6,054.0	-1,027.37	-644.0	-637.6	690.8	10.00	10.00	0.00
<b>SHARON SPRINGS SHALE</b>										
<b>6,268.0</b>	<b>55.64</b>	<b>179.83</b>	<b>6,095.6</b>	<b>-1,069.00</b>	<b>-697.8</b>	<b>-637.4</b>	<b>744.4</b>	<b>10.00</b>	<b>10.00</b>	<b>0.00</b>
6,300.0	58.83	179.83	6,112.9	-1,086.30	-724.7	-637.4	771.2	10.00	10.00	0.00
6,400.0	68.83	179.83	6,156.9	-1,130.34	-814.3	-637.1	860.6	10.00	10.00	0.00
<b>NIOBARRA FORMATION</b>										
<b>6,425.4</b>	<b>71.38</b>	<b>179.83</b>	<b>6,165.6</b>	<b>-1,139.00</b>	<b>-838.2</b>	<b>-637.0</b>	<b>884.4</b>	<b>10.00</b>	<b>10.00</b>	<b>0.00</b>
<b>NIOBARRA A CHALK</b>										
<b>6,459.8</b>	<b>74.82</b>	<b>179.83</b>	<b>6,175.6</b>	<b>-1,149.00</b>	<b>-871.1</b>	<b>-636.9</b>	<b>917.2</b>	<b>10.00</b>	<b>10.00</b>	<b>0.00</b>
6,500.0	78.83	179.83	6,184.8	-1,158.15	-910.2	-636.8	956.2	10.00	10.00	0.00
6,600.0	88.83	179.83	6,195.5	-1,168.88	-1,009.5	-636.5	1,055.2	10.00	10.00	0.00
<b>BPI: 2040ft FSL &amp; 1083ft FEL of Sec 14</b>										
<b>6,611.7</b>	<b>90.00</b>	<b>179.83</b>	<b>6,195.6</b>	<b>-1,169.00</b>	<b>-1,021.2</b>	<b>-636.5</b>	<b>1,066.8</b>	<b>10.00</b>	<b>10.00</b>	<b>0.00</b>
6,700.0	90.00	179.83	6,195.6	-1,169.00	-1,109.5	-636.2	1,154.8	0.00	0.00	0.00
6,800.0	90.00	179.83	6,195.6	-1,169.00	-1,209.5	-635.9	1,254.5	0.00	0.00	0.00
6,900.0	90.00	179.83	6,195.6	-1,169.00	-1,309.5	-635.6	1,354.2	0.00	0.00	0.00
7,000.0	90.00	179.83	6,195.6	-1,169.00	-1,409.5	-635.3	1,453.9	0.00	0.00	0.00
7,100.0	90.00	179.83	6,195.6	-1,169.00	-1,509.5	-635.0	1,553.6	0.00	0.00	0.00
7,200.0	90.00	179.83	6,195.6	-1,169.00	-1,609.5	-634.7	1,653.3	0.00	0.00	0.00
7,300.0	90.00	179.83	6,195.6	-1,169.00	-1,709.5	-634.4	1,752.9	0.00	0.00	0.00
7,400.0	90.00	179.83	6,195.6	-1,169.00	-1,809.5	-634.1	1,852.6	0.00	0.00	0.00
7,500.0	90.00	179.83	6,195.6	-1,169.00	-1,909.5	-633.8	1,952.3	0.00	0.00	0.00
7,600.0	90.00	179.83	6,195.6	-1,169.00	-2,009.5	-633.5	2,052.0	0.00	0.00	0.00
7,700.0	90.00	179.83	6,195.6	-1,169.00	-2,109.5	-633.1	2,151.7	0.00	0.00	0.00
7,800.0	90.00	179.83	6,195.6	-1,169.00	-2,209.5	-632.8	2,251.4	0.00	0.00	0.00
7,900.0	90.00	179.83	6,195.6	-1,169.00	-2,309.5	-632.5	2,351.1	0.00	0.00	0.00

# Planning Report



<b>Database:</b>	EDM 5000.1 Single User Db	<b>Local Co-ordinate Reference:</b>	Well ROHN FED 9-60 14B-23-7
<b>Company:</b>	BISON OIL & GAS II, LLC	<b>TVD Reference:</b>	KB-EST @ 5026.6usft (Original Well Elev)
<b>Project:</b>	WELD COUNTY, COLORADO (NAD 83)	<b>MD Reference:</b>	KB-EST @ 5026.6usft (Original Well Elev)
<b>Site:</b>	SE NE SEC. 14 T9N R60W 6th P.M.	<b>North Reference:</b>	True
<b>Well:</b>	ROHN FED 9-60 14B-23-7	<b>Survey Calculation Method:</b>	Minimum Curvature
<b>Wellbore:</b>	ORIGINAL WELLBORE		
<b>Design:</b>	PROPOSAL #1		

Planned Survey										
MD (usft)	Inc (°)	Azi (°)	TVD (usft)	SS (usft)	+N/-S (usft)	+E/-W (usft)	Vertical Section (usft)	Dogleg Rate (°/100usft)	Build Rate (°/100usft)	Turn Rate (°/100usft)
8,000.0	90.00	179.83	6,195.6	-1,169.00	-2,409.5	-632.2	2,450.7	0.00	0.00	0.00
8,100.0	90.00	179.83	6,195.6	-1,169.00	-2,509.5	-631.9	2,550.4	0.00	0.00	0.00
8,200.0	90.00	179.83	6,195.6	-1,169.00	-2,609.5	-631.6	2,650.1	0.00	0.00	0.00
8,300.0	90.00	179.83	6,195.6	-1,169.00	-2,709.5	-631.3	2,749.8	0.00	0.00	0.00
8,400.0	90.00	179.83	6,195.6	-1,169.00	-2,809.5	-631.0	2,849.5	0.00	0.00	0.00
8,500.0	90.00	179.83	6,195.6	-1,169.00	-2,909.5	-630.7	2,949.2	0.00	0.00	0.00
8,600.0	90.00	179.83	6,195.6	-1,169.00	-3,009.5	-630.4	3,048.9	0.00	0.00	0.00
8,700.0	90.00	179.83	6,195.6	-1,169.00	-3,109.5	-630.1	3,148.5	0.00	0.00	0.00
8,800.0	90.00	179.83	6,195.6	-1,169.00	-3,209.5	-629.8	3,248.2	0.00	0.00	0.00
8,900.0	90.00	179.83	6,195.6	-1,169.00	-3,309.5	-629.6	3,347.9	0.00	0.00	0.00
9,000.0	90.00	179.83	6,195.6	-1,169.00	-3,409.5	-629.3	3,447.6	0.00	0.00	0.00
9,100.0	90.00	179.83	6,195.6	-1,169.00	-3,509.5	-629.0	3,547.3	0.00	0.00	0.00
9,200.0	90.00	179.83	6,195.6	-1,169.00	-3,609.5	-628.7	3,647.0	0.00	0.00	0.00
9,300.0	90.00	179.83	6,195.6	-1,169.00	-3,709.5	-628.4	3,746.6	0.00	0.00	0.00
9,400.0	90.00	179.83	6,195.6	-1,169.00	-3,809.5	-628.1	3,846.3	0.00	0.00	0.00
9,500.0	90.00	179.83	6,195.6	-1,169.00	-3,909.5	-627.8	3,946.0	0.00	0.00	0.00
9,600.0	90.00	179.83	6,195.6	-1,169.00	-4,009.5	-627.5	4,045.7	0.00	0.00	0.00
9,700.0	90.00	179.83	6,195.6	-1,169.00	-4,109.5	-627.2	4,145.4	0.00	0.00	0.00
9,800.0	90.00	179.83	6,195.6	-1,169.00	-4,209.5	-626.9	4,245.1	0.00	0.00	0.00
9,900.0	90.00	179.83	6,195.6	-1,169.00	-4,309.5	-626.6	4,344.8	0.00	0.00	0.00
10,000.0	90.00	179.83	6,195.6	-1,169.00	-4,409.5	-626.3	4,444.4	0.00	0.00	0.00
10,100.0	90.00	179.83	6,195.6	-1,169.00	-4,509.5	-626.0	4,544.1	0.00	0.00	0.00
10,200.0	90.00	179.83	6,195.6	-1,169.00	-4,609.5	-625.7	4,643.8	0.00	0.00	0.00
10,300.0	90.00	179.83	6,195.6	-1,169.00	-4,709.5	-625.4	4,743.5	0.00	0.00	0.00
10,400.0	90.00	179.83	6,195.6	-1,169.00	-4,809.5	-625.1	4,843.2	0.00	0.00	0.00
10,500.0	90.00	179.83	6,195.6	-1,169.00	-4,909.5	-624.8	4,942.9	0.00	0.00	0.00
10,600.0	90.00	179.83	6,195.6	-1,169.00	-5,009.5	-624.5	5,042.6	0.00	0.00	0.00
10,700.0	90.00	179.83	6,195.6	-1,169.00	-5,109.5	-624.2	5,142.2	0.00	0.00	0.00
10,800.0	90.00	179.83	6,195.6	-1,169.00	-5,209.5	-623.9	5,241.9	0.00	0.00	0.00
10,900.0	90.00	179.83	6,195.6	-1,169.00	-5,309.5	-623.7	5,341.6	0.00	0.00	0.00
11,000.0	90.00	179.83	6,195.6	-1,169.00	-5,409.5	-623.4	5,441.3	0.00	0.00	0.00
11,100.0	90.00	179.83	6,195.6	-1,169.00	-5,509.5	-623.1	5,541.0	0.00	0.00	0.00
11,200.0	90.00	179.83	6,195.6	-1,169.00	-5,609.5	-622.8	5,640.7	0.00	0.00	0.00
11,300.0	90.00	179.83	6,195.6	-1,169.00	-5,709.5	-622.5	5,740.4	0.00	0.00	0.00
11,400.0	90.00	179.83	6,195.6	-1,169.00	-5,809.5	-622.2	5,840.0	0.00	0.00	0.00
11,500.0	90.00	179.83	6,195.6	-1,169.00	-5,909.5	-621.9	5,939.7	0.00	0.00	0.00
11,600.0	90.00	179.83	6,195.6	-1,169.00	-6,009.5	-621.6	6,039.4	0.00	0.00	0.00
11,700.0	90.00	179.83	6,195.6	-1,169.00	-6,109.5	-621.3	6,139.1	0.00	0.00	0.00
11,800.0	90.00	179.83	6,195.6	-1,169.00	-6,209.5	-621.0	6,238.8	0.00	0.00	0.00
11,900.0	90.00	179.83	6,195.6	-1,169.00	-6,309.5	-620.8	6,338.5	0.00	0.00	0.00
12,000.0	90.00	179.83	6,195.6	-1,169.00	-6,409.5	-620.5	6,438.2	0.00	0.00	0.00
12,100.0	90.00	179.84	6,195.6	-1,169.00	-6,509.5	-620.2	6,537.8	0.00	0.00	0.00
12,200.0	90.00	179.84	6,195.6	-1,169.00	-6,609.5	-619.9	6,637.5	0.00	0.00	0.00
12,300.0	90.00	179.84	6,195.6	-1,169.00	-6,709.5	-619.6	6,737.2	0.00	0.00	0.00
12,400.0	90.00	179.84	6,195.6	-1,169.00	-6,809.5	-619.3	6,836.9	0.00	0.00	0.00
12,500.0	90.00	179.84	6,195.6	-1,169.00	-6,909.5	-619.0	6,936.6	0.00	0.00	0.00
12,600.0	90.00	179.84	6,195.6	-1,169.00	-7,009.5	-618.7	7,036.3	0.00	0.00	0.00
12,700.0	90.00	179.84	6,195.6	-1,169.00	-7,109.5	-618.5	7,136.0	0.00	0.00	0.00
12,800.0	90.00	179.84	6,195.6	-1,169.00	-7,209.5	-618.2	7,235.6	0.00	0.00	0.00
12,900.0	90.00	179.84	6,195.6	-1,169.00	-7,309.5	-617.9	7,335.3	0.00	0.00	0.00
13,000.0	90.00	179.84	6,195.6	-1,169.00	-7,409.5	-617.6	7,435.0	0.00	0.00	0.00
13,100.0	90.00	179.84	6,195.6	-1,169.00	-7,509.5	-617.3	7,534.7	0.00	0.00	0.00
13,200.0	90.00	179.84	6,195.6	-1,169.00	-7,609.5	-617.0	7,634.4	0.00	0.00	0.00
13,300.0	90.00	179.84	6,195.6	-1,169.00	-7,709.5	-616.8	7,734.1	0.00	0.00	0.00

# Planning Report



<b>Database:</b>	EDM 5000.1 Single User Db	<b>Local Co-ordinate Reference:</b>	Well ROHN FED 9-60 14B-23-7
<b>Company:</b>	BISON OIL & GAS II, LLC	<b>TVD Reference:</b>	KB-EST @ 5026.6usft (Original Well Elev)
<b>Project:</b>	WELD COUNTY, COLORADO (NAD 83)	<b>MD Reference:</b>	KB-EST @ 5026.6usft (Original Well Elev)
<b>Site:</b>	SE NE SEC. 14 T9N R60W 6th P.M.	<b>North Reference:</b>	True
<b>Well:</b>	ROHN FED 9-60 14B-23-7	<b>Survey Calculation Method:</b>	Minimum Curvature
<b>Wellbore:</b>	ORIGINAL WELLBORE		
<b>Design:</b>	PROPOSAL #1		

Planned Survey										
MD (usft)	Inc (°)	Azi (°)	TVD (usft)	SS (usft)	+N/-S (usft)	+E/-W (usft)	Vertical Section (usft)	Dogleg Rate (°/100usft)	Build Rate (°/100usft)	Turn Rate (°/100usft)
<b>EPI: 600ft FSL &amp; 1136ft FEL of Sec 23</b>										
13,328.5	90.00	179.84	6,195.6	-1,169.00	-7,738.0	-616.7	7,762.5	0.00	0.00	0.00
<b>EOT TO 179.74° AZ</b>										
13,331.8	90.00	179.74	6,195.6	-1,169.00	-7,741.3	-616.7	7,765.8	3.00	0.00	-3.00
13,400.0	90.00	179.74	6,195.6	-1,169.00	-7,809.5	-616.3	7,833.8	0.00	0.00	0.00
13,500.0	90.00	179.74	6,195.6	-1,169.00	-7,909.5	-615.9	7,933.4	0.00	0.00	0.00
13,600.0	90.00	179.73	6,195.6	-1,169.00	-8,009.5	-615.4	8,033.1	0.00	0.00	0.00
<b>BHL: 300ft FSL &amp; 1139ft FEL of Sec 23</b>										
13,628.4	90.00	179.73	6,195.6	-1,169.00	-8,037.9	-615.3	8,061.4	0.00	0.00	0.00

Formations						
MD (usft)	TVD (usft)	Name	Lithology	Dip (°)	Dip Direction (°)	
619.6	619.6	PIERRE SHALE (BASE FOX HILLS				
3,482.9	3,443.6	PARKMAN				
4,024.1	3,968.6	SUSSEX				
5,153.7	5,066.6	SHANNON				
6,268.0	6,095.6	SHARON SPRINGS SHALE				
6,425.4	6,165.6	NIOBRARA FORMATION				
6,459.8	6,175.6	NIOBRARA A CHALK				

Plan Annotations				
MD (usft)	TVD (usft)	Local Coordinates		Comment
		+N/-S (usft)	+E/-W (usft)	
0.0	0.0	0.0	0.0	SHL: 2300ft FNL & 443ft FEL of Sec 14
1,700.0	1,700.0	0.0	0.0	START NUDGE (2°/100ft BUR)
2,402.4	2,395.4	-49.2	-70.1	EOB TO 14.05° INC
4,909.2	4,827.2	-399.0	-568.1	END OF TANGENT
5,611.6	5,522.6	-448.2	-638.2	EOD TO VERTICAL
5,711.6	5,622.6	-448.2	-638.2	KOP (10°/100ft BUR)
6,611.7	6,195.6	-1,021.2	-636.5	BPI: 2040ft FSL & 1083ft FEL of Sec 14
13,328.5	6,195.6	-7,738.0	-616.7	EPI: 600ft FSL & 1136ft FEL of Sec 23
13,331.8	6,195.6	-7,741.3	-616.7	EOT TO 179.74° AZ
13,628.4	6,195.6	-8,037.9	-615.3	BHL: 300ft FSL & 1139ft FEL of Sec 23