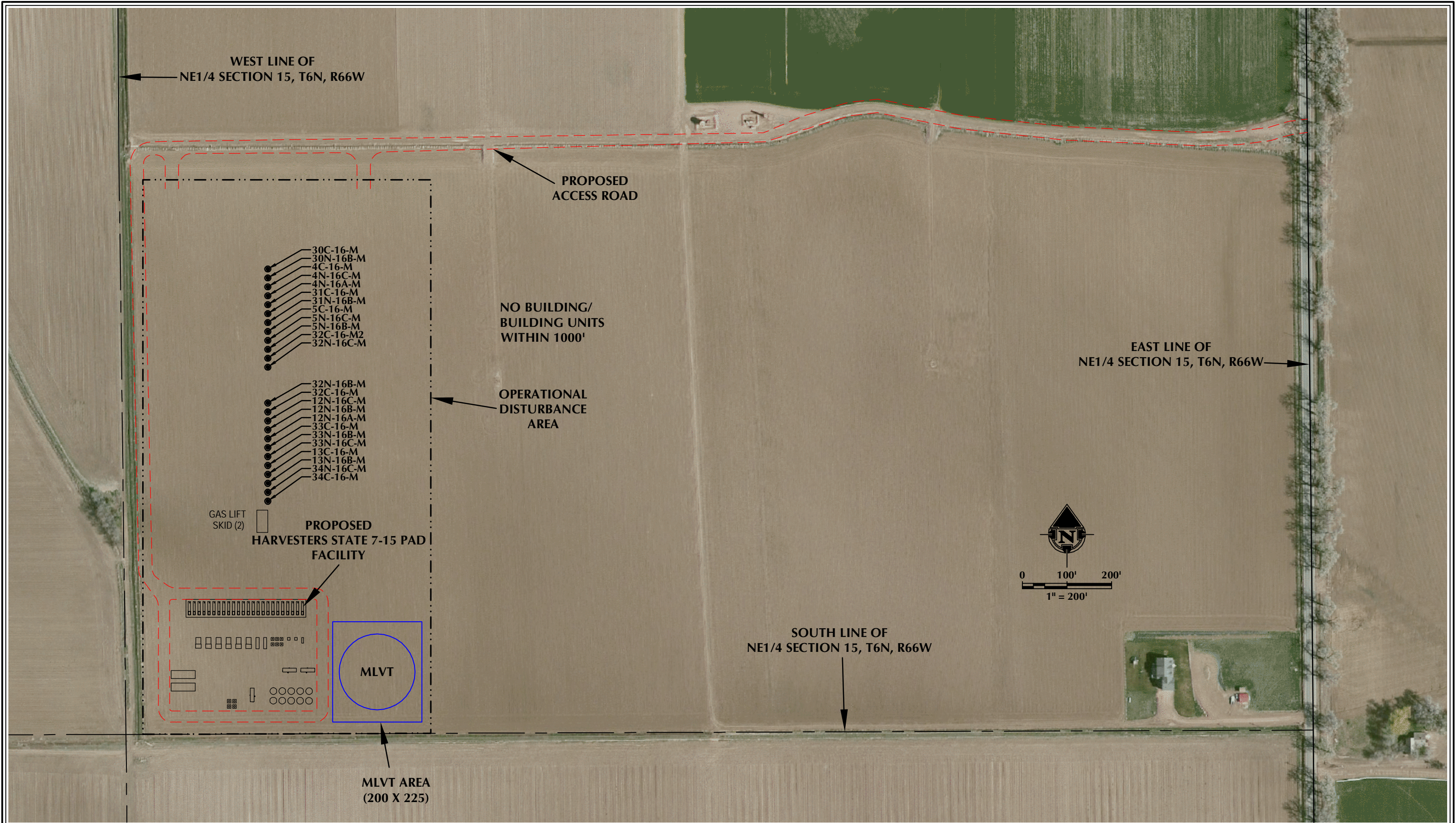


K:\S\ENERGY RESOURCES\2017\_24\_HARVESTERS\_T6N\_R66W\_SEC\_15\DWG\HARVESTER.DWG, 8/29/2017 11:19:54 AM, jhe



**NOTES:**

1. EQUIPMENT PLACEMENT IS APPROXIMATE AND SUBJECT TO MINOR MODIFICATION DUE TO SPECIFIC CIRCUMSTANCES.

**DATA SOURCES:**  
- AERIAL COURTESY OF ESRI, INC.



LOVELAND OFFICE  
1635 Foxtrail Drive, Suite 204  
Loveland, Colorado 80538  
Phone 970-776-4331

SHERIDAN OFFICE  
1095 Saberton Avenue  
Sheridan, Wyoming 82801  
Phone 307-674-0609



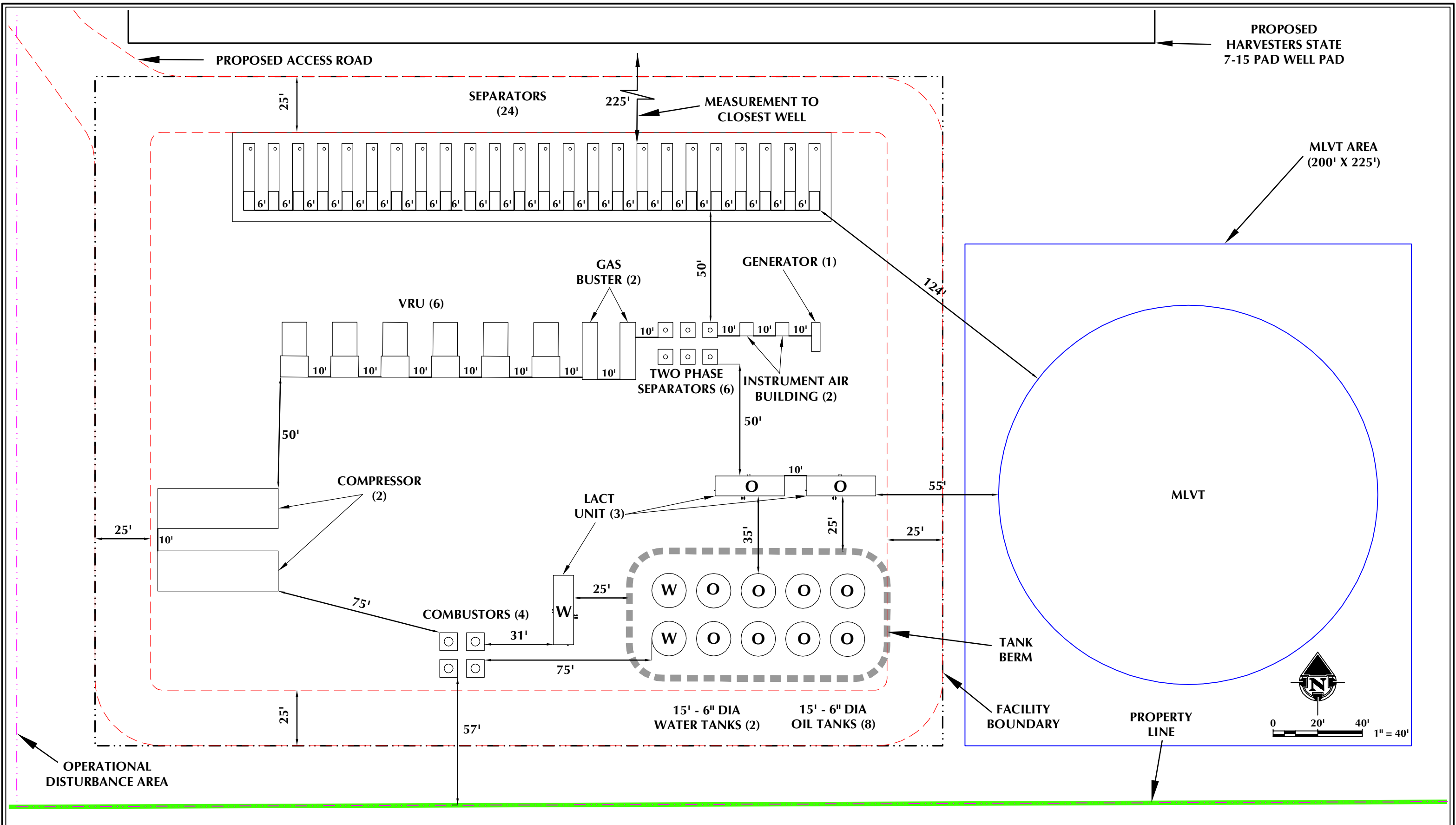
**SRC ENERGY**  
1675 Broadway, Suite 2600  
Denver, Colorado 80202

SCALE: 1" = 200'  
DATE SURVEYED: 7/17/17  
DATE: 7/28/17  
DRAFTER: HJL  
REVISED: 8/29/17

**FACILITY LOCATION DRAWING (A)**  
HARVESTERS STATE 7-15 PAD  
LOCATED IN SECTION 15, T6N, R66W, 6TH P.M.  
WELD COUNTY, COLORADO



K:\SYNERGY RESOURCES\2017\_74\_HARVESTERS\_T6N\_R66W\_SEC\_15\DWG\HARVEST.DWG, 8/29/2017 11:20:42 AM, jhe



<p><b>NOTES:</b></p> <p>1. EQUIPMENT PLACEMENT IS APPROXIMATE AND SUBJECT TO MINOR MODIFICATION DUE TO SPECIFIC CIRCUMSTANCES.</p>		<p><b>609</b> CONSULTING, LLC</p> <p>LOVELAND OFFICE 1635 Foxtrail Drive, Suite 204 Loveland, Colorado 80538 Phone 970-776-4331</p> <p>SHERIDAN OFFICE 1095 Saberton Avenue Sheridan, Wyoming 82801 Phone 307-674-0609</p>	<p><b>SRC ENERGY</b></p> <p>1675 Broadway, Suite 2600 Denver, Colorado 80202</p>	<p>SCALE: 1" = 200'</p> <p>DATE SURVEYED: N/A</p> <p>DATE: 7/19/17</p> <p>DRAFTER: HJL</p> <p>REVISED: 8/29/17</p>	<p><b>FACILITY LOCATION DRAWING (B)</b></p> <p>HARVESTERS STATE 7-15 PAD</p> <p>LOCATED IN SECTION 15, T6N, R66W, 6TH P.M.</p> <p>WELD COUNTY, COLORADO</p>
--	--	---	---	--	---

**FACILITY LOCATION DRAWING (C)**  
**HARVESTERS STATE 7-15 PAD**  
**PRODUCTION FACILITY & MISC. EQUIPMENT**

# MLVTs	1
# VRUs	6
# Compressors	2
# LACT Units	3
# Combustors	4
# Gas Busters	2
# Oil Tanks	8
# Water Tanks	2
# Generators	1
# Single Separators	24
# Two Phase Separators	6
# Instrument Air Buildings	2
# Gas Lift Skids	2
* No existing facility equipment within disturbance area *	

**WELLS**

Proposed:

HARVESTERS STATE 30C-16-M, HARVESTERS STATE 30N-16B-M,  
HARVESTERS STATE 4C-16-M, HARVESTERS STATE 4N-16C-M,  
HARVESTERS STATE 4N-16A-M, HARVESTERS STATE 31C-16-M,  
HARVESTERS STATE 31N-16B-M, HARVESTERS STATE 5C-16-M,  
HARVESTERS STATE 5N-16C-M, HARVESTERS STATE 5N-16B-M,  
HARVESTERS STATE 32C-16-M2, HARVESTERS STATE 32N-16C-M,  
HARVESTERS STATE 32N-16B-M, HARVESTERS STATE 32C-16-M,  
HARVESTERS STATE 12N-16C-M, HARVESTERS STATE 12N-16B-M,  
HARVESTERS STATE 12N-16A-M, HARVESTERS STATE 33C-16-M,  
HARVESTERS STATE 33N-16B-M, HARVESTERS STATE 33N-16C-M,  
HARVESTERS STATE 13C-16-M, HARVESTERS STATE 13N-16B-M,  
HARVESTERS STATE 34N-16C-M & HARVESTERS STATE 34C-16-M

\* No existing wells within disturbance area \*