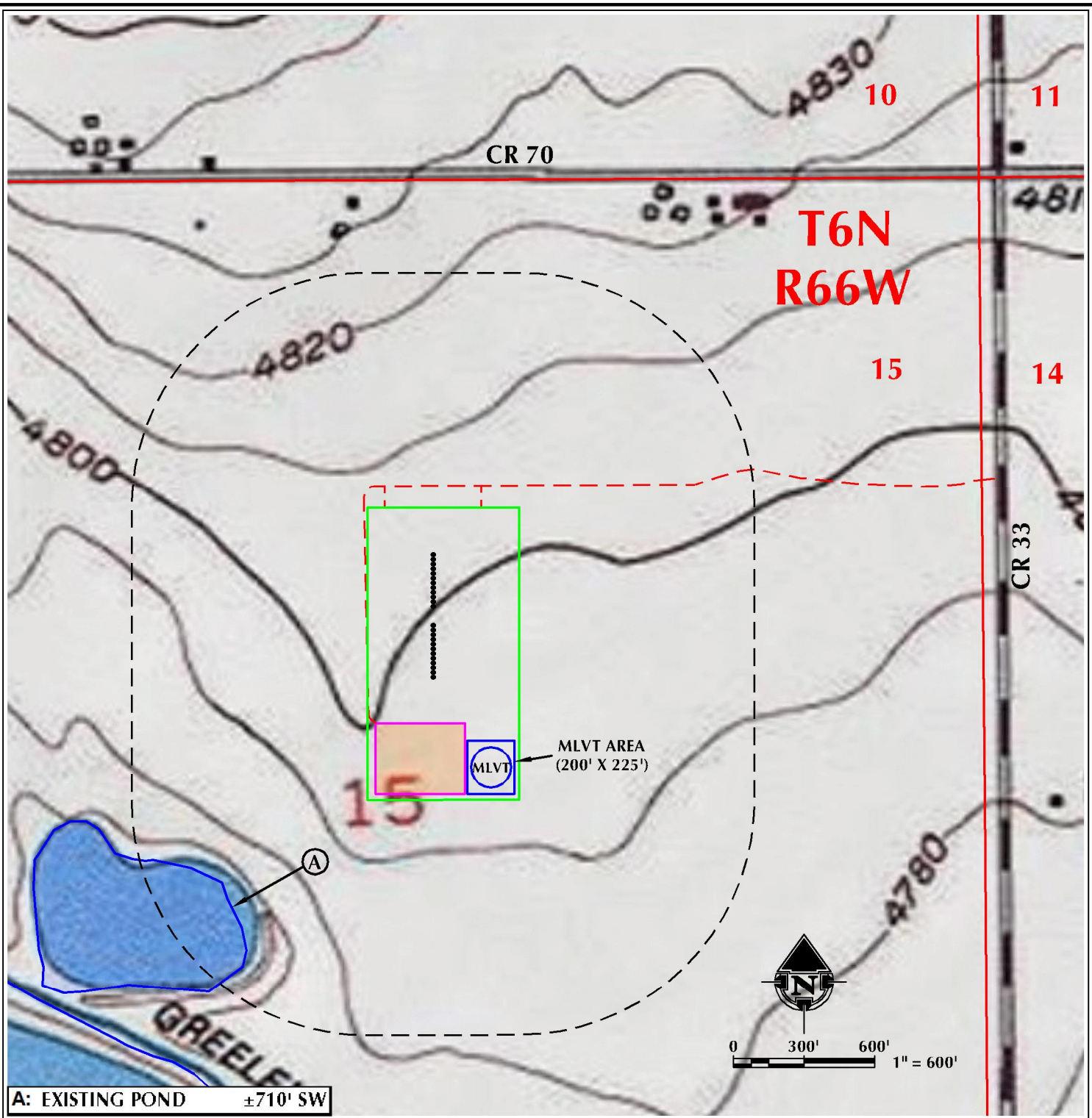


R:\SHERIDAN\RESOURCES\2017_74_HARVESTERS_T6N_R66W_SEC_15.DWG\HARVESTERS.DWG, 8/29/2017 11:14:02 AM, jhl



A: EXISTING POND ±710' SW

LEGEND

- | | | |
|------------------------|----------------------------|---|
| ● PROPOSED WELL | — SECTION LINE | *ALL DISTANCES MEASURED FROM EDGE OF DISTURBANCE. |
| - - - ACCESS ROAD | ▭ DISTURBANCE AREA | == ROAD - IMPROVED - EXISTING |
| — DITCH/CANAL/DRAINAGE | ▭ PROPOSED FACILITY | - - - ROAD - PRIMITIVE - EXISTING |
| | ▭ 1000' DISTURBANCE BUFFER | — ROAD - HIGHWAY - EXISTING |

PAD - HARVESTERS STATE 7-15 PAD

HYDROLOGY MAP
HARVESTERS STATE 30C-16-M, HARVESTERS STATE 30N-16B-M, HARVESTERS STATE 4C-16-M,
HARVESTERS STATE 4N-16C-M, HARVESTERS STATE 4N-16A-M, HARVESTERS STATE 31C-16-M,
HARVESTERS STATE 31N-16B-M, HARVESTERS STATE 5C-16-M, HARVESTERS STATE 5N-16C-M,
HARVESTERS STATE 5N-16B-M, HARVESTERS STATE 32C-16-M2, HARVESTERS STATE 32N-16C-M,
HARVESTERS STATE 32N-16B-M, HARVESTERS STATE 32C-16-M, HARVESTERS STATE 12N-16C-M,
HARVESTERS STATE 12N-16B-M, HARVESTERS STATE 12N-16A-M, HARVESTERS STATE 33C-16-M,
HARVESTERS STATE 33N-16B-M, HARVESTERS STATE 33N-16C-M, HARVESTERS STATE 13C-16-M,
HARVESTERS STATE 13N-16B-M, HARVESTERS STATE 34N-16C-M & HARVESTERS STATE 34C-16-M
LOCATED IN SECTION 15, T6N, R66W, 6TH P.M.
WEED COUNTY, COLORADO

SRC ENERGY
1675 Broadway, Suite 2600
Denver, Colorado 80202

609 CONSULTING, LLC
SHERIDAN OFFICE 1095 Saberton Avenue Sheridan, Wyoming 82801 Phone 307-674-0609
LOVELAND OFFICE 1635 Foxtrail Drive, Suite 204 Loveland, Colorado 80538 Phone 970-776-4331

SCALE:	1" = 600ft	NAD83 CO-Nft
DRAWN:	HJL	DATE: 7/28/17
REVISED:	JFE	DATE: 8/29/17