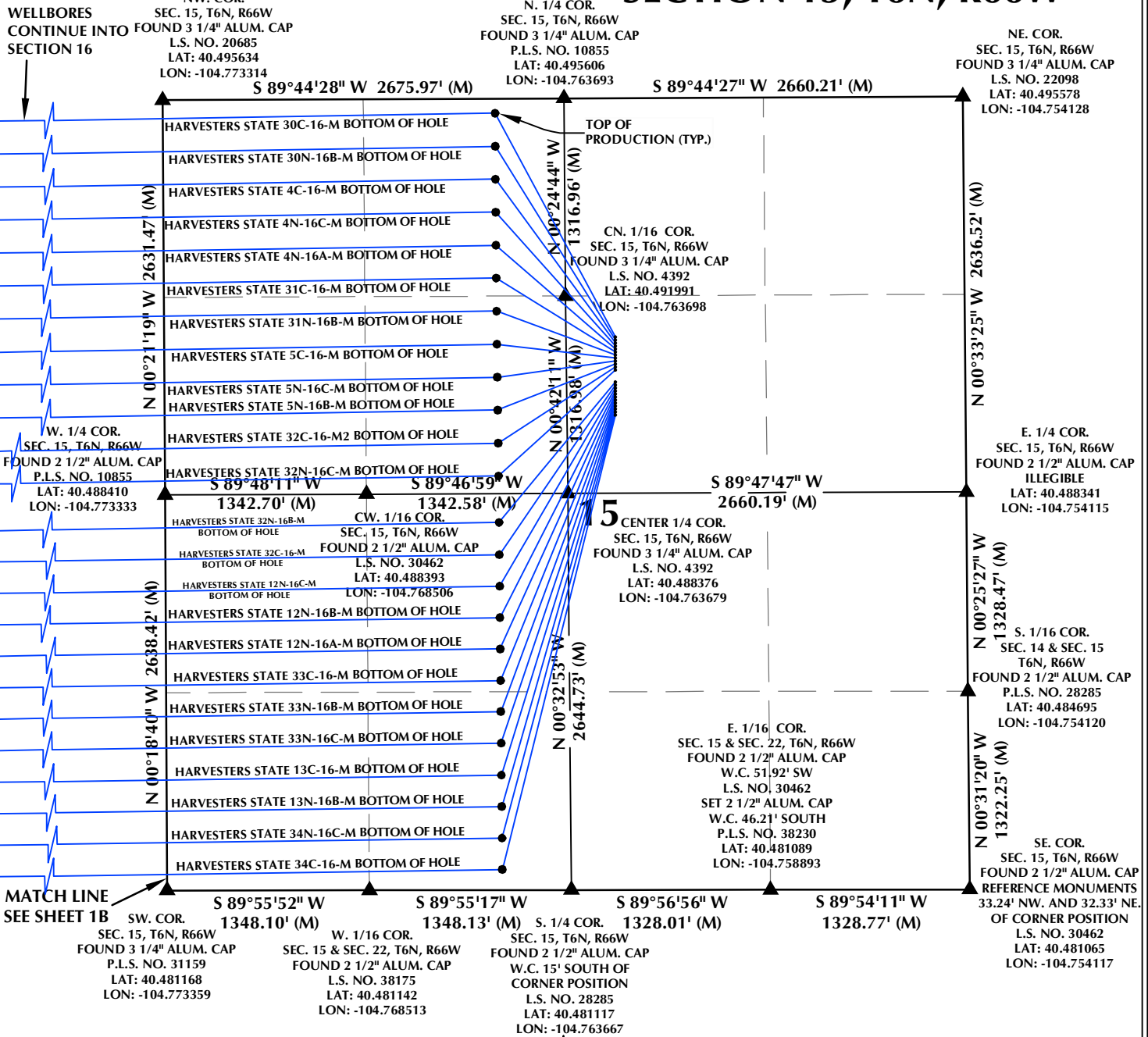
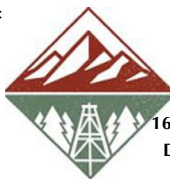


SECTION 15, T6N, R66W



WELL PAD - HARVESTERS STATE 7-15 PAD

MULTI-WELL PLAN
HARVESTERS STATE 30C-16-M, HARVESTERS STATE 30N-16B-M, HARVESTERS STATE 4C-16-M,
HARVESTERS STATE 4N-16C-M, HARVESTERS STATE 4N-16A-M, HARVESTERS STATE 31C-16-M,
HARVESTERS STATE 31N-16B-M, HARVESTERS STATE 5C-16-M, HARVESTERS STATE 5N-16C-M,
HARVESTERS STATE 5N-16B-M, HARVESTERS STATE 32C-16-M2, HARVESTERS STATE 32N-16C-M,
HARVESTERS STATE 32N-16B-M, HARVESTERS STATE 32C-16-M, HARVESTERS STATE 12N-16C-M,
HARVESTERS STATE 12N-16B-M, HARVESTERS STATE 12N-16A-M, HARVESTERS STATE 33C-16-M,
HARVESTERS STATE 33N-16B-M, HARVESTERS STATE 33N-16C-M, HARVESTERS STATE 13C-16-M,
HARVESTERS STATE 13N-16B-M, HARVESTERS STATE 34N-16C-M & HARVESTERS STATE 34C-16-M
LOCATED IN SECTIONS 15 & 16
T6N, R66W, 6TH P.M.
WELD COUNTY, COLORADO



SRC ENERGY
1675 Broadway, Suite 2600
Denver, Colorado 80202



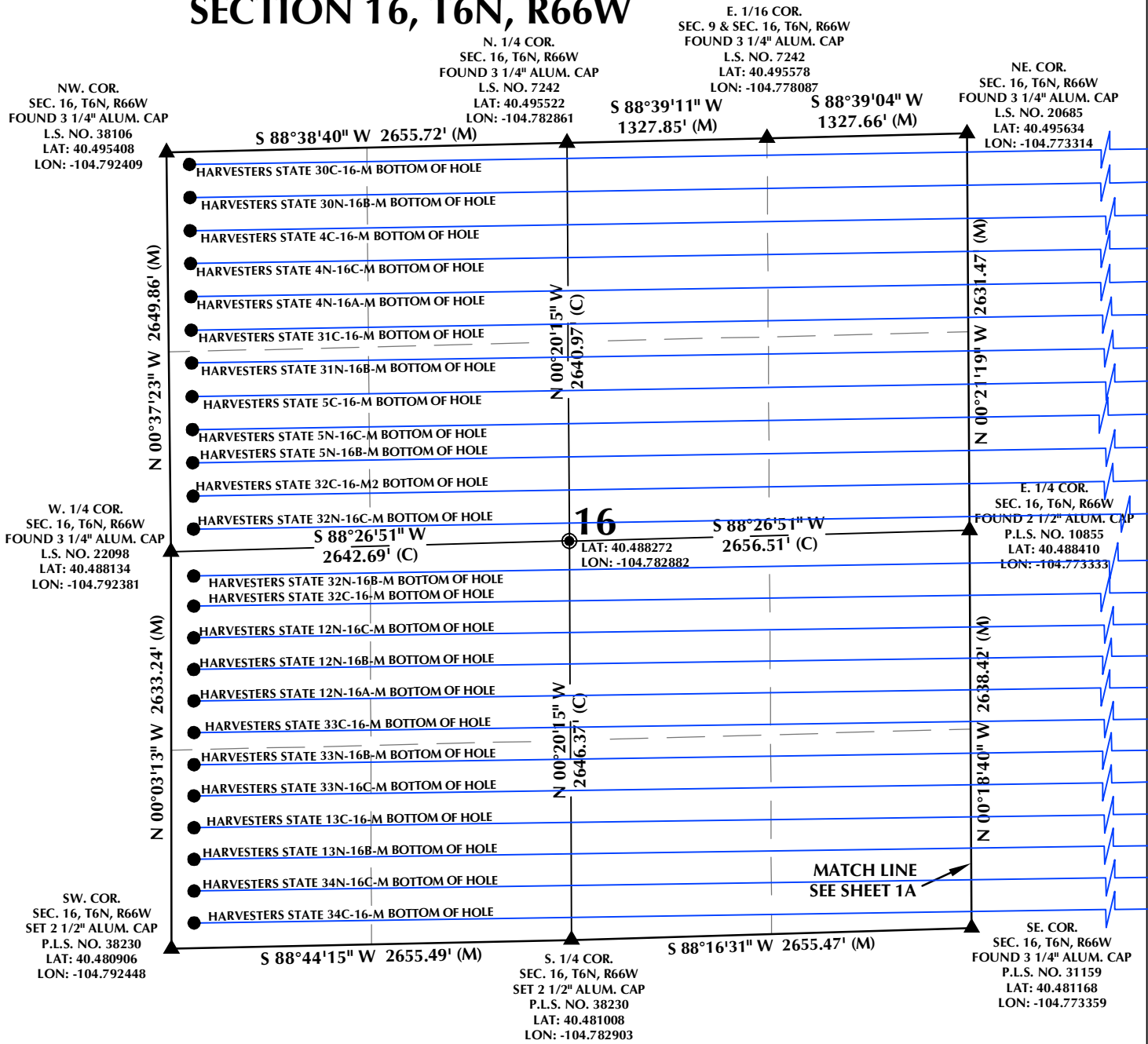
CONSULTING, LLC

SHERIDAN OFFICE
1095 Saberton Avenue
Sheridan, Wyoming 82801
Phone 307-674-0609

LOVELAND OFFICE
1635 Foxtrail Drive, Suite 204
Loveland, Colorado 80538
Phone 970-776-4331

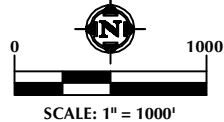
DRAFTED BY:	LMO	CHECKED BY:	JRS	SHEET NO:
DATE DRAFTED:	7/24/17	DATE SURVEYED:	7/7/17	1A
REVISED:	8/29/17	FILE NAME:	17-74	1A OF 3

SECTION 16, T6N, R66W



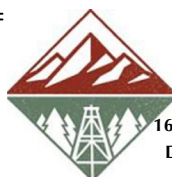
NOTES:

- ▲ INDICATES SECTION CORNER
- INDICATES CALCULATED CORNER
- BASIS OF BEARING DERIVED FROM COLORADO COORDINATE SYSTEM OF 1983 NORTH ZONE.
- ALL MEASURED DISTANCES ARE GRID.
COMBINED SCALE FACTOR: .99974077 CALCULATED FROM THE W. 1/4 CORNER OF SECTION 15, T6N, R66W
- WELL FOOTAGES ARE MEASURED AT RIGHT ANGLES TO THE SECTION LINES.



WELL PAD - HARVESTERS STATE 7-15 PAD

MULTI-WELL PLAN
HARVESTERS STATE 30C-16-M, HARVESTERS STATE 30N-16B-M, HARVESTERS STATE 4C-16-M,
HARVESTERS STATE 4N-16C-M, HARVESTERS STATE 4N-16A-M, HARVESTERS STATE 31C-16-M,
HARVESTERS STATE 31N-16B-M, HARVESTERS STATE 5C-16-M, HARVESTERS STATE 5N-16C-M,
HARVESTERS STATE 5N-16B-M, HARVESTERS STATE 32C-16-M2, HARVESTERS STATE 32N-16C-M,
HARVESTERS STATE 32N-16B-M, HARVESTERS STATE 32C-16-M, HARVESTERS STATE 12N-16C-M,
HARVESTERS STATE 12N-16B-M, HARVESTERS STATE 12N-16A-M, HARVESTERS STATE 33C-16-M,
HARVESTERS STATE 33N-16B-M, HARVESTERS STATE 33N-16C-M, HARVESTERS STATE 13C-16-M,
HARVESTERS STATE 13N-16B-M, HARVESTERS STATE 34N-16C-M & HARVESTERS STATE 34C-16-M
LOCATED IN SECTIONS 15 & 16
T6N, R66W, 6TH P.M.
WELD COUNTY, COLORADO



SRC ENERGY
1675 Broadway, Suite 2600
Denver, Colorado 80202



CONSULTING, LLC

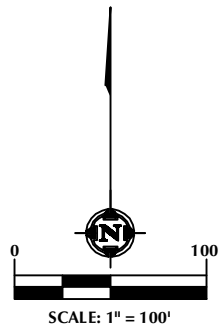
SHERIDAN OFFICE
1095 Saberton Avenue
Sheridan, Wyoming 82801
Phone 307-674-0609

LOVELAND OFFICE
1635 Foxtrail Drive, Suite 204
Loveland, Colorado 80538
Phone 970-776-4331

DRAFTED BY:	LMO	CHECKED BY:	JRS	SHEET NO:
DATE DRAFTED:	7/24/17	DATE SURVEYED:	7/7/17	1B
REVISED:	8/29/17	FILE NAME:	17-74	1B OF 3

HARVESTERS STATE 7-15 PAD

HARVESTERS STATE 30C-16-M ●
 HARVESTERS STATE 30N-16B-M ● 20'
 HARVESTERS STATE 4C-16-M ● 20'
 HARVESTERS STATE 4N-16C-M ● 20'
 HARVESTERS STATE 4N-16A-M ● 20'
 HARVESTERS STATE 31C-16-M ● 20'
 HARVESTERS STATE 31N-16B-M ● 20'
 HARVESTERS STATE 5C-16-M ● 20'
 HARVESTERS STATE 5N-16C-M ● 20'
 HARVESTERS STATE 5N-16B-M ● 20'
 HARVESTERS STATE 32C-16-M2 ● 20'
 HARVESTERS STATE 32N-16C-M ● 20'
 80'
 HARVESTERS STATE 32N-16B-M ● 20'
 HARVESTERS STATE 32C-16-M ● 20'
 HARVESTERS STATE 12N-16C-M ● 20'
 HARVESTERS STATE 12N-16B-M ● 20'
 HARVESTERS STATE 12N-16A-M ● 20'
 HARVESTERS STATE 33C-16-M ● 20'
 HARVESTERS STATE 33N-16B-M ● 20'
 HARVESTERS STATE 33N-16C-M ● 20'
 HARVESTERS STATE 13C-16-M ● 20'
 HARVESTERS STATE 13N-16B-M ● 20'
 HARVESTERS STATE 34N-16C-M ● 20'
 HARVESTERS STATE 34C-16-M ●

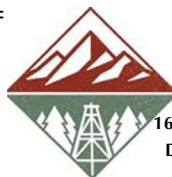


NOTES:

- ▲ INDICATES SECTION CORNER
- INDICATES CALCULATED CORNER
- BASIS OF BEARING DERIVED FROM COLORADO COORDINATE SYSTEM OF 1983 NORTH ZONE.
- ALL MEASURED DISTANCES ARE GRID.
COMBINED SCALE FACTOR: .99974077 CALCULATED FROM THE W. 1/4 CORNER OF SECTION 15, T6N, R66W
- WELL FOOTAGES ARE MEASURED AT RIGHT ANGLES TO THE SECTION LINES.

WELL PAD - HARVESTERS STATE 7-15 PAD

MULTI-WELL PLAN
 HARVESTERS STATE 30C-16-M, HARVESTERS STATE 30N-16B-M, HARVESTERS STATE 4C-16-M,
 HARVESTERS STATE 4N-16C-M, HARVESTERS STATE 4N-16A-M, HARVESTERS STATE 31C-16-M,
 HARVESTERS STATE 31N-16B-M, HARVESTERS STATE 5C-16-M, HARVESTERS STATE 5N-16C-M,
 HARVESTERS STATE 5N-16B-M, HARVESTERS STATE 32C-16-M2, HARVESTERS STATE 32N-16C-M,
 HARVESTERS STATE 32N-16B-M, HARVESTERS STATE 32C-16-M, HARVESTERS STATE 12N-16C-M,
 HARVESTERS STATE 12N-16B-M, HARVESTERS STATE 12N-16A-M, HARVESTERS STATE 33C-16-M,
 HARVESTERS STATE 33N-16B-M, HARVESTERS STATE 33N-16C-M, HARVESTERS STATE 13C-16-M,
 HARVESTERS STATE 13N-16B-M, HARVESTERS STATE 34N-16C-M & HARVESTERS STATE 34C-16-M
 LOCATED IN SECTIONS 15 & 16
 T6N, R66W, 6TH P.M.
 WELD COUNTY, COLORADO



SRC ENERGY
 1675 Broadway, Suite 2600
 Denver, Colorado 80202



CONSULTING, LLC

SHERIDAN OFFICE
 1095 Saberton Avenue
 Sheridan, Wyoming 82801
 Phone 307-674-0609

LOVELAND OFFICE
 1635 Foxtrail Drive, Suite 204
 Loveland, Colorado 80538
 Phone 970-776-4331

DRAFTED BY:	LMO	CHECKED BY:	JRS	SHEET NO:
DATE DRAFTED:	7/24/17	DATE SURVEYED:	7/7/17	2
REVISED:	8/29/17	FILE NAME:	17-74	2 OF 3

HARVESTERS STATE 7-15 PAD

WELL NOTES:

HARVESTERS STATE 30C-16-M

SURFACE:	TOP OF PRODUCTION:	BOTTOM HOLE:	FORMATION:
1593' FNL & 2332' FEL	96' FNL & 2216' FWL	83' FNL & 150' FWL	CODELL
LATITUDE= 40.491230°	LATITUDE= 40.495348°	LATITUDE= 40.495186°	
LONGITUDE= -104.762506°	LONGITUDE= -104.765347°	LONGITUDE= -104.791869°	

HARVESTERS STATE 30N-16B-M

SURFACE:	TOP OF PRODUCTION:	BOTTOM HOLE:	FORMATION:
1613' FNL & 2333' FEL	317' FNL & 2216' FWL	302' FNL & 150' FWL	NIOBRARA
LATITUDE= 40.491176°	LATITUDE= 40.494741°	LATITUDE= 40.494585°	
LONGITUDE= -104.762506°	LONGITUDE= -104.765348°	LONGITUDE= -104.791866°	

HARVESTERS STATE 4C-16-M

SURFACE:	TOP OF PRODUCTION:	BOTTOM HOLE:	FORMATION:
1633' FNL & 2333' FEL	536' FNL & 2216' FWL	523' FNL & 150' FWL	CODELL
LATITUDE= 40.491121°	LATITUDE= 40.494140°	LATITUDE= 40.493978°	
LONGITUDE= -104.762507°	LONGITUDE= -104.765349°	LONGITUDE= -104.791864°	

HARVESTERS STATE 4N-16C-M

SURFACE:	TOP OF PRODUCTION:	BOTTOM HOLE:	FORMATION:
1653' FNL & 2333' FEL	756' FNL & 2217' FWL	741' FNL & 150' FWL	NIOBRARA
LATITUDE= 40.491066°	LATITUDE= 40.493536°	LATITUDE= 40.493380°	
LONGITUDE= -104.762508°	LONGITUDE= -104.765349°	LONGITUDE= -104.791862°	

HARVESTERS STATE 4N-16A-M

SURFACE:	TOP OF PRODUCTION:	BOTTOM HOLE:	FORMATION:
1673' FNL & 2333' FEL	977' FNL & 2217' FWL	961' FNL & 150' FWL	NIOBRARA
LATITUDE= 40.491011°	LATITUDE= 40.492929°	LATITUDE= 40.492776°	
LONGITUDE= -104.762508°	LONGITUDE= -104.765350°	LONGITUDE= -104.791860°	

HARVESTERS STATE 31C-16-M

SURFACE:	TOP OF PRODUCTION:	BOTTOM HOLE:	FORMATION:
1693' FNL & 2333' FEL	1195' FNL & 2217' FWL	1183' FNL & 150' FWL	CODELL
LATITUDE= 40.490956°	LATITUDE= 40.492331°	LATITUDE= 40.492167°	
LONGITUDE= -104.762509°	LONGITUDE= -104.765351°	LONGITUDE= -104.791857°	

HARVESTERS STATE 31N-16B-M

SURFACE:	TOP OF PRODUCTION:	BOTTOM HOLE:	FORMATION:
1713' FNL & 2334' FEL	1416' FNL & 2218' FWL	1401' FNL & 150' FWL	NIOBRARA
LATITUDE= 40.490901°	LATITUDE= 40.491724°	LATITUDE= 40.491568°	
LONGITUDE= -104.762509°	LONGITUDE= -104.765350°	LONGITUDE= -104.791855°	

HARVESTERS STATE 5C-16-M

SURFACE:	TOP OF PRODUCTION:	BOTTOM HOLE:	FORMATION:
1733' FNL & 2334' FEL	1637' FNL & 2219' FWL	1623' FNL & 150' FWL	CODELL
LATITUDE= 40.490846°	LATITUDE= 40.491118°	LATITUDE= 40.490959°	
LONGITUDE= -104.762510°	LONGITUDE= -104.765347°	LONGITUDE= -104.791853°	

HARVESTERS STATE 5N-16C-M

SURFACE:	TOP OF PRODUCTION:	BOTTOM HOLE:	FORMATION:
1753' FNL & 2334' FEL	1857' FNL & 2221' FWL	1842' FNL & 150' FWL	NIOBRARA
LATITUDE= 40.490791°	LATITUDE= 40.490514°	LATITUDE= 40.490358°	
LONGITUDE= -104.762511°	LONGITUDE= -104.765344°	LONGITUDE= -104.791850°	

HARVESTERS STATE 5N-16B-M

SURFACE:	TOP OF PRODUCTION:	BOTTOM HOLE:	FORMATION:
1773' FNL & 2334' FEL	2076' FNL & 2222' FWL	2062' FNL & 150' FWL	NIOBRARA
LATITUDE= 40.490736°	LATITUDE= 40.489912°	LATITUDE= 40.489754°	
LONGITUDE= -104.762511°	LONGITUDE= -104.765341°	LONGITUDE= -104.791848°	

HARVESTERS STATE 32C-16-M2

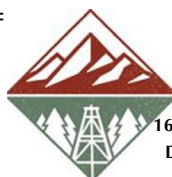
SURFACE:	TOP OF PRODUCTION:	BOTTOM HOLE:	FORMATION:
1793' FNL & 2334' FEL	2297' FNL & 2223' FWL	2284' FNL & 150' FWL	CODELL
LATITUDE= 40.490681°	LATITUDE= 40.489306°	LATITUDE= 40.489144°	
LONGITUDE= -104.762512°	LONGITUDE= -104.765338°	LONGITUDE= -104.791846°	

HARVESTERS STATE 32N-16C-M

SURFACE:	TOP OF PRODUCTION:	BOTTOM HOLE:	FORMATION:
1813' FNL & 2335' FEL	2515' FNL & 2225' FWL	2502' FNL & 150' FWL	NIOBRARA
LATITUDE= 40.490627°	LATITUDE= 40.488707°	LATITUDE= 40.488546°	
LONGITUDE= -104.762512°	LONGITUDE= -104.765335°	LONGITUDE= -104.791844°	

WELL PAD - HARVESTERS STATE 7-15 PAD

MULTI-WELL PLAN
HARVESTERS STATE 30C-16-M, HARVESTERS STATE 30N-16B-M, HARVESTERS STATE 4C-16-M,
HARVESTERS STATE 4N-16C-M, HARVESTERS STATE 4N-16A-M, HARVESTERS STATE 31C-16-M,
HARVESTERS STATE 31N-16B-M, HARVESTERS STATE 5C-16-M, HARVESTERS STATE 5N-16C-M,
HARVESTERS STATE 5N-16B-M, HARVESTERS STATE 32C-16-M2, HARVESTERS STATE 32N-16C-M,
HARVESTERS STATE 32N-16B-M, HARVESTERS STATE 32C-16-M, HARVESTERS STATE 12N-16C-M,
HARVESTERS STATE 12N-16B-M, HARVESTERS STATE 12N-16A-M, HARVESTERS STATE 33C-16-M,
HARVESTERS STATE 33N-16B-M, HARVESTERS STATE 33N-16C-M, HARVESTERS STATE 13C-16-M,
HARVESTERS STATE 13N-16B-M, HARVESTERS STATE 34N-16C-M & HARVESTERS STATE 34C-16-M
LOCATED IN SECTIONS 15 & 16
T6N, R66W, 6TH P.M.
WELD COUNTY, COLORADO



SRC ENERGY

1675 Broadway, Suite 2600
Denver, Colorado 80202



CONSULTING, LLC

SHERIDAN OFFICE
1095 Saberton Avenue
Sheridan, Wyoming 82801
Phone 307-674-0609

LOVELAND OFFICE
1635 Foxtrail Drive, Suite 204
Loveland, Colorado 80538
Phone 970-776-4331

DRAFTED BY:	LMO	CHECKED BY:	JRS	SHEET NO: 3A 3A OF 3
DATE DRAFTED:	7/24/17	DATE SURVEYED:	7/7/17	
REVISED:	8/29/17	FILE NAME:	17-74	

HARVESTERS STATE 7-15 PAD

WELL NOTES:

HARVESTERS STATE 32N-16B-M

SURFACE:	TOP OF PRODUCTION:	BOTTOM HOLE:	FORMATION:
1893' FNL & 2335' FEL	2452' FSL & 2226' FWL	2468' FSL & 150' FWL	NIOBRARA
LATITUDE= 40.490407°	LATITUDE= 40.487856°	LATITUDE= 40.487688°	
LONGITUDE= -104.762515°	LONGITUDE= -104.765332°	LONGITUDE= -104.791846°	

HARVESTERS STATE 32C-16-M

SURFACE:	TOP OF PRODUCTION:	BOTTOM HOLE:	FORMATION:
1913' FNL & 2335' FEL	2236' FSL & 2227' FWL	2269' FSL & 150' FWL	CODELL
LATITUDE= 40.490352°	LATITUDE= 40.487263°	LATITUDE= 40.487141°	
LONGITUDE= -104.762515°	LONGITUDE= -104.765331°	LONGITUDE= -104.791851°	

HARVESTERS STATE 12N-16C-M

SURFACE:	TOP OF PRODUCTION:	BOTTOM HOLE:	FORMATION:
1933' FNL & 2336' FEL	2026' FSL & 2228' FWL	2058' FSL & 150' FWL	NIOBRARA
LATITUDE= 40.490297°	LATITUDE= 40.486687°	LATITUDE= 40.486562°	
LONGITUDE= -104.762516°	LONGITUDE= -104.765330°	LONGITUDE= -104.791857°	

HARVESTERS STATE 12N-16B-M

SURFACE:	TOP OF PRODUCTION:	BOTTOM HOLE:	FORMATION:
1953' FNL & 2336' FEL	1817' FSL & 2229' FWL	1849' FSL & 150' FWL	NIOBRARA
LATITUDE= 40.490242°	LATITUDE= 40.486113°	LATITUDE= 40.485988°	
LONGITUDE= -104.762517°	LONGITUDE= -104.765329°	LONGITUDE= -104.791862°	

HARVESTERS STATE 12N-16A-M

SURFACE:	TOP OF PRODUCTION:	BOTTOM HOLE:	FORMATION:
1973' FNL & 2336' FEL	1608' FSL & 2230' FWL	1640' FSL & 150' FWL	NIOBRARA
LATITUDE= 40.490187°	LATITUDE= 40.485539°	LATITUDE= 40.485414°	
LONGITUDE= -104.762517°	LONGITUDE= -104.765328°	LONGITUDE= -104.791867°	

HARVESTERS STATE 33C-16-M

SURFACE:	TOP OF PRODUCTION:	BOTTOM HOLE:	FORMATION:
1993' FNL & 2336' FEL	1397' FSL & 2230' FWL	1430' FSL & 150' FWL	CODELL
LATITUDE= 40.490133°	LATITUDE= 40.484960°	LATITUDE= 40.484838°	
LONGITUDE= -104.762518°	LONGITUDE= -104.765327°	LONGITUDE= -104.791872°	

HARVESTERS STATE 33N-16B-M

SURFACE:	TOP OF PRODUCTION:	BOTTOM HOLE:	FORMATION:
2013' FNL & 2336' FEL	1190' FSL & 2231' FWL	1217' FSL & 150' FWL	NIOBRARA
LATITUDE= 40.490078°	LATITUDE= 40.484392°	LATITUDE= 40.484253°	
LONGITUDE= -104.762518°	LONGITUDE= -104.765326°	LONGITUDE= -104.791878°	

HARVESTERS STATE 33N-16C-M

SURFACE:	TOP OF PRODUCTION:	BOTTOM HOLE:	FORMATION:
2033' FNL & 2337' FEL	979' FSL & 2232' FWL	1010' FSL & 150' FWL	NIOBRARA
LATITUDE= 40.490023°	LATITUDE= 40.483813°	LATITUDE= 40.483685°	
LONGITUDE= -104.762519°	LONGITUDE= -104.765325°	LONGITUDE= -104.791883°	

HARVESTERS STATE 13C-16-M

SURFACE:	TOP OF PRODUCTION:	BOTTOM HOLE:	FORMATION:
2053' FNL & 2337' FEL	766' FSL & 2233' FW	799' FSL & 150' FWL	CODELL
LATITUDE= 40.489968°	LATITUDE= 40.483228°	LATITUDE= 40.483105°	
LONGITUDE= -104.762520°	LONGITUDE= -104.765324°	LONGITUDE= -104.791888°	

HARVESTERS STATE 13N-16B-M

SURFACE:	TOP OF PRODUCTION:	BOTTOM HOLE:	FORMATION:
2073' FNL & 2337' FEL	577' FSL & 2234' FWL	589' FSL & 150' FWL	NIOBRARA
LATITUDE= 40.489913°	LATITUDE= 40.482654°	LATITUDE= 40.482529°	
LONGITUDE= -104.762520°	LONGITUDE= -104.765323°	LONGITUDE= -104.791894°	

HARVESTERS STATE 34N-16C-M

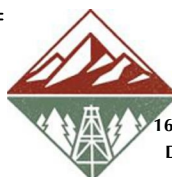
SURFACE:	TOP OF PRODUCTION:	BOTTOM HOLE:	FORMATION:
2093' FNL & 2337' FEL	346' FSL & 2235' FWL	379' FSL & 150' FWL	NIOBRARA
LATITUDE= 40.489858°	LATITUDE= 40.482075°	LATITUDE= 40.481952°	
LONGITUDE= -104.762521°	LONGITUDE= -104.765322°	LONGITUDE= -104.791899°	

HARVESTERS STATE 34C-16-M

SURFACE:	TOP OF PRODUCTION:	BOTTOM HOLE:	FORMATION:
2113' FNL & 2337' FEL	137' FSL & 2236' FWL	168' FSL & 150' FWL	CODELL
LATITUDE= 40.489803°	LATITUDE= 40.481501°	LATITUDE= 40.481373°	
LONGITUDE= -104.762521°	LONGITUDE= -104.765321°	LONGITUDE= -104.791904°	

WELL PAD - HARVESTERS STATE 7-15 PAD

MULTI-WELL PLAN
HARVESTERS STATE 30C-16-M, HARVESTERS STATE 30N-16B-M, HARVESTERS STATE 4C-16-M,
HARVESTERS STATE 4N-16C-M, HARVESTERS STATE 4N-16A-M, HARVESTERS STATE 31C-16-M,
HARVESTERS STATE 31N-16B-M, HARVESTERS STATE 5C-16-M, HARVESTERS STATE 5N-16C-M,
HARVESTERS STATE 5N-16B-M, HARVESTERS STATE 32C-16-M2, HARVESTERS STATE 32N-16C-M,
HARVESTERS STATE 32N-16B-M, HARVESTERS STATE 32C-16-M, HARVESTERS STATE 12N-16C-M,
HARVESTERS STATE 12N-16B-M, HARVESTERS STATE 12N-16A-M, HARVESTERS STATE 33C-16-M,
HARVESTERS STATE 33N-16B-M, HARVESTERS STATE 33N-16C-M, HARVESTERS STATE 13C-16-M,
HARVESTERS STATE 13N-16B-M, HARVESTERS STATE 34N-16C-M & HARVESTERS STATE 34C-16-M
LOCATED IN SECTIONS 15 & 16
T6N, R66W, 6TH P.M.
WELD COUNTY, COLORADO



SRC ENERGY

1675 Broadway, Suite 2600
Denver, Colorado 80202



CONSULTING, LLC

SHERIDAN OFFICE
1095 Saberton Avenue
Sheridan, Wyoming 82801
Phone 307-674-0609

LOVELAND OFFICE
1635 Foxtrail Drive, Suite 204
Loveland, Colorado 80538
Phone 970-776-4331

DRAFTED BY:	LMO	CHECKED BY:	JRS	SHEET NO: 3B 3B OF 3
DATE DRAFTED:	7/24/17	DATE SURVEYED:	7/7/17	
REVISED:	8/29/17	FILE NAME:	17-74	