

T2N, R65W

NW. COR.
SEC. 25, T2N, R65W
FOUND 2 1/2" ALUM. CAP
L.S. NO. 13482

S 89°46'27" W 2652.21' (M)

N. 1/4 COR.
SEC. 25, T2N, R65W
FOUND 2 1/2" ALUM. CAP
P.L.S. NO. 36073

S 89°46'07" W
1326.23' (M)

S 89°50'01" W
1326.79' (M)

NE. COR.
SEC. 25, T2N, R65W
FOUND 3 1/4" ALUM. CAP
P.L.S. NO. 36053

W. 1/4 COR.
SEC. 25, T2N, R65W
FOUND 3 1/4" ALUM. CAP
ILLEGIBLE

S 89°09'53" W

2631.99' (M)

CENTER 1/4 COR.
SEC. 25, T2N, R65W
FOUND 3 1/4" ALUM. CAP
L.S. NO. 33642

25

S 89°09'42" W

2674.46' (M)

E. 1/4 COR.
SEC. 25, T2N, R65W
FOUND 3 1/4" ALUM. CAP
P.L.S. NO. 36053

HEEL LOCATION

SURFACE LOCATION: NAD 83
GROUND ELEVATION= 4899.2'
LATITUDE= 40.110298°
LONGITUDE= -104.610017°
LATITUDE= 40°06'37.074"
LONGITUDE= -104°36'36.062"
HEEL LOCATION: NAD 83
LATITUDE= 40.109376°
LONGITUDE= -104.602714°
LATITUDE= 40°06'33.754"
LONGITUDE= -104°36'09.772"
BOTTOM HOLE LOCATION: NAD 83
LATITUDE= 40.086506°
LONGITUDE= -104.603152°
LATITUDE= 40°05'11.422"
LONGITUDE= -104°36'11.347"

SW. COR.
SEC. 25, T2N, R65W
FOUND 3 1/4" ALUM. CAP
P.L.S. NO. 27269

S 87°27'25" W 2622.20' (M)

S. 1/4 COR.
SEC. 25, T2N, R65W
FOUND 3 1/4" ALUM. CAP
L.S. NO. 33642

S 88°49'45" W 2696.17' (C)

WELLBORE CONTINUES
INTO SECTION 36

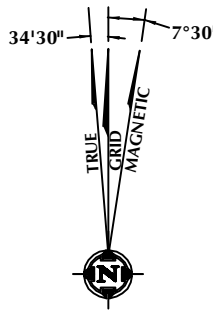
MATCH LINE
SEE SHEET 2

CERTIFICATE OF SURVEYOR:

THIS IS TO CERTIFY THAT THE ABOVE PLAT WAS PREPARED FROM FIELD NOTES OF ACTUAL SURVEYS MADE BY ME OR UNDER MY SUPERVISION AND THAT THE SAME ARE TRUE AND CORRECT TO THE BEST OF MY KNOWLEDGE AND BELIEF. THIS CERTIFICATE DOES NOT REPRESENT A LAND SURVEY PLAT OR IMPROVEMENT SURVEY PLAT AS DEFINED BY C.R.S. 38-5-102 AND CANNOT BE RELIED UPON TO DETERMINE OWNERSHIP.

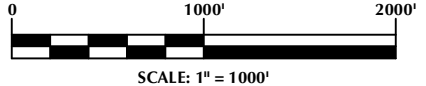
Randall K. French
RANDALL K. FRENCH
PROFESSIONAL LAND SURVEYOR
COLORADO REGISTRATION NUMBER 38512
9/19/17

NOTICE:
ACCORDING TO COLORADO STATE LAW YOU MUST TAKE LEGAL ACTION BASED UPON ANY DEFECT IN THIS SURVEY WITHIN THREE YEARS AFTER YOU FIRST DISCOVER SUCH DEFECT. IN NO EVENT MAY ANY ACTION BASED UPON ANY DEFECT IN THIS SURVEY BE COMMENCED MORE THAN TEN YEARS FROM THE DATE ON THE CERTIFICATION SHOWN HEREON.



NOTE:
MAGNETIC NORTH IS CURRENT AS OF 8/31/2017.
MAGNETIC NORTH CHANGES WEST 0°06' PER YEAR.

- ▲ INDICATES SECTION CORNER
- INDICATES CALCULATED CORNER
- ELEVATION BASED ON NAVD88 (GEOID12B)
- BASIS OF BEARING DERIVED FROM COLORADO COORDINATE SYSTEM OF 1983 NORTH ZONE.
- ALL MEASURED DISTANCES ARE GRID.
COMBINED SCALE FACTOR: .99972880 CALCULATED FROM THE N. 1/4 CORNER OF SECTION 25, T2N, R65W
- OPERATOR: TRAVIS HOLLAND / PDOP = 1.4
- SEE ADDENDUM TO WELL LOCATION CERTIFICATE FOR EXISTING IMPROVEMENTS WITHIN 500' OF THE WELL PAD. WELL FOOTAGES ARE MEASURED AT RIGHT ANGLES TO THE SECTION LINES.
- THE BOTTOM OF HOLE BEARS S00°15'44"W, 8332' FROM THE HEEL LOCATION.



WELL PAD - GEORGE 25-4HZ

GEORGE 25-7HZ
WELL LOCATION CERTIFICATE
2339' FNL & 2041' FEL SWNE (SURFACE)
2615' FSL & 1' FEL NESE (HEEL)
LOCATED IN SECTION 25
T2N, R65W, 6TH P.M.
333' FNL & 133' FEL LOT 1 (NENE) (BOTTOM)
LOCATED IN SECTION 1
T1N, R65W, 6TH P.M.
WELD COUNTY, COLORADO

**Kerr-McGee Oil &
Gas Onshore L.P.**
1099 18th Street
Denver, Colorado 80202



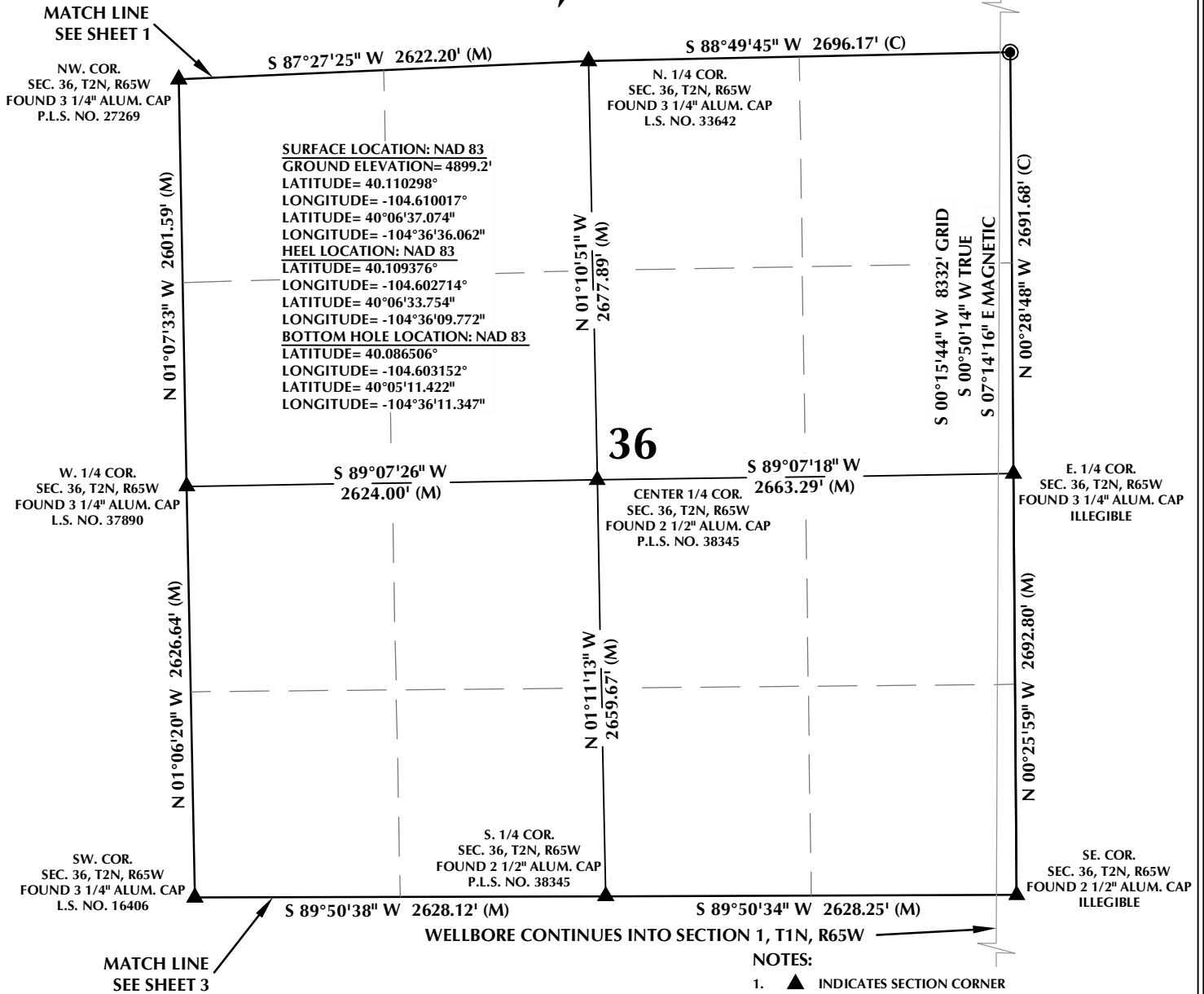
CONSULTING, LLC

SHERIDAN OFFICE
1095 Saberton Avenue
Sheridan, Wyoming 82801
Phone 307-674-0609

LOVELAND OFFICE
1635 Foxtrail Drive, Suite 204
Loveland, Colorado 80538
Phone 970-776-4331

DRAFTED BY:	LMO	CHECKED BY:	RKF	SHEET NO:
DATE DRAFTED:	9/19/17	DATE SURVEYED:	7/27/17	1
REVISED:		FILE NAME:	16-186	1 OF 3

T2N, R65W

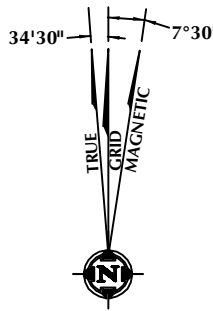


CERTIFICATE OF SURVEYOR:

THIS IS TO CERTIFY THAT THE ABOVE PLAT WAS PREPARED FROM FIELD NOTES OF ACTUAL SURVEYS MADE BY ME OR UNDER MY SUPERVISION AND THAT THE SAME ARE TRUE AND CORRECT TO THE BEST OF MY KNOWLEDGE AND BELIEF. THIS CERTIFICATE DOES NOT REPRESENT A LAND SURVEY PLAT OR IMPROVEMENT SURVEY PLAT AS DEFINED BY C.R.S. 38-5-102 AND CANNOT BE RELIED UPON TO DETERMINE OWNERSHIP.

Randall K. French
38512
9/19/17
RANDALL K. FRENCH
PROFESSIONAL LAND SURVEYOR
COLORADO REGISTRATION NUMBER 38512

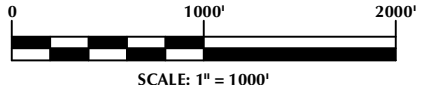
NOTICE:
ACCORDING TO COLORADO STATE LAW YOU MUST TAKE LEGAL ACTION BASED UPON ANY DEFECT IN THIS SURVEY WITHIN THREE YEARS AFTER YOU FIRST DISCOVER SUCH DEFECT. IN NO EVENT MAY ANY ACTION BASED UPON ANY DEFECT IN THIS SURVEY BE COMMENCED MORE THAN TEN YEARS FROM THE DATE ON THE CERTIFICATION SHOWN HEREON.



NOTE:
MAGNETIC NORTH IS CURRENT AS OF 8/31/2017.
MAGNETIC NORTH CHANGES WEST 0°06' PER YEAR.

NOTES:

- ▲ INDICATES SECTION CORNER
- INDICATES CALCULATED CORNER
- ELEVATION BASED ON NAVD88 (GEOID12B)
- BASIS OF BEARING DERIVED FROM COLORADO COORDINATE SYSTEM OF 1983 NORTH ZONE.
- ALL MEASURED DISTANCES ARE GRID.
COMBINED SCALE FACTOR: .99972880 CALCULATED FROM THE N. 1/4 CORNER OF SECTION 25, T2N, R65W
- OPERATOR: TRAVIS HOLLAND / PDOP = 1.4
- SEE ADDENDUM TO WELL LOCATION CERTIFICATE FOR EXISTING IMPROVEMENTS WITHIN 500' OF THE WELL PAD. WELL FOOTAGES ARE MEASURED AT RIGHT ANGLES TO THE SECTION LINES.
- THE BOTTOM OF HOLE BEARS S00°15'44"W, 8332' FROM THE HEEL LOCATION.



WELL PAD - GEORGE 25-4HZ

GEORGE 25-4HZ
WELL LOCATION CERTIFICATE
2339' FNL & 2041' FEL SWNE (SURFACE)
2615' FSL & 1' FEL NESE (HEEL)
LOCATED IN SECTION 25
T2N, R65W, 6TH P.M.
333' FNL & 133' FEL LOT 1 (NENE) (BOTTOM)
LOCATED IN SECTION 1
T1N, R65W, 6TH P.M.
WELD COUNTY, COLORADO

**Kerr-McGee Oil &
Gas Onshore L.P.**
1099 18th Street
Denver, Colorado 80202



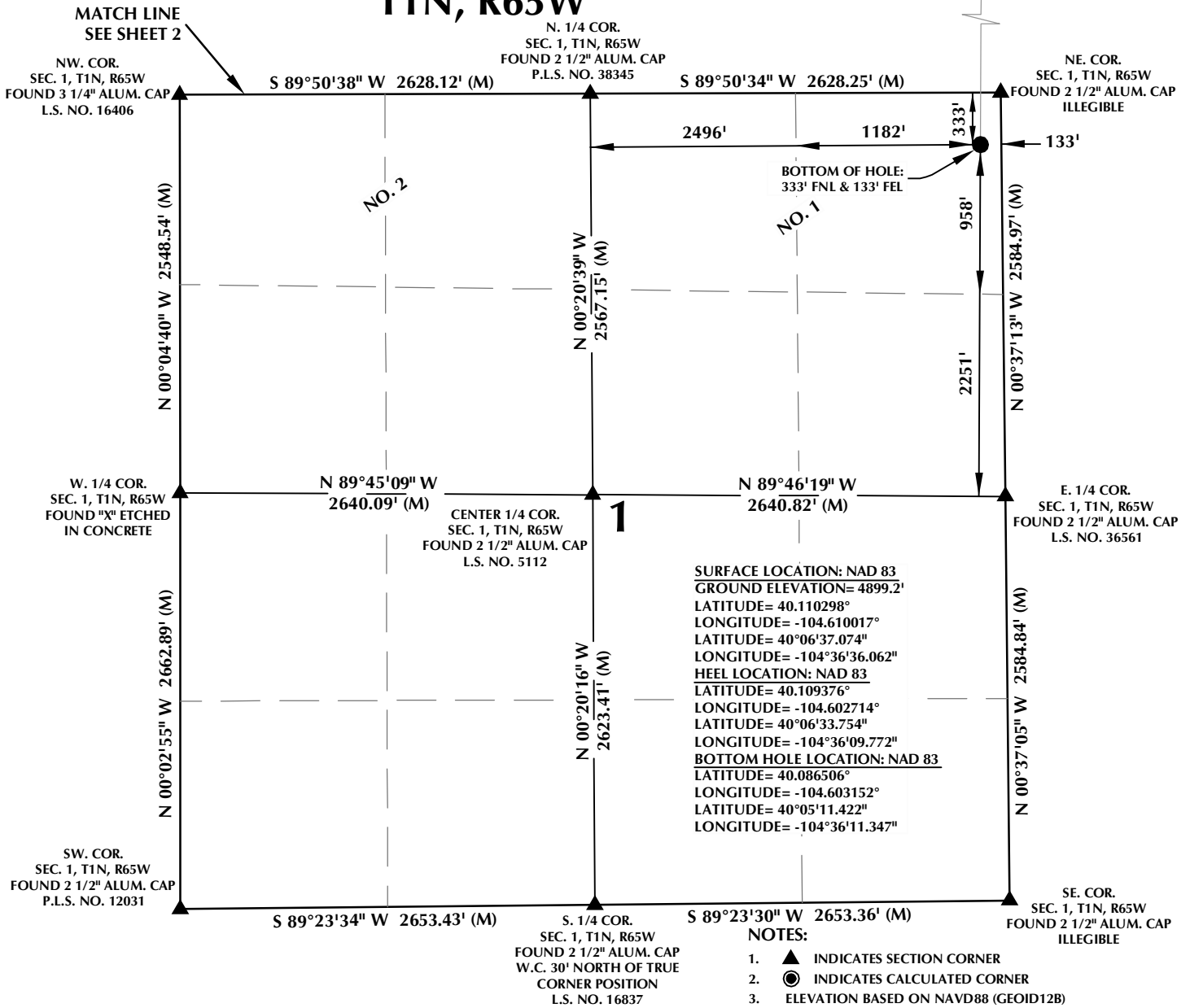
CONSULTING, LLC

SHERIDAN OFFICE
1095 Saberton Avenue
Sheridan, Wyoming 82801
Phone 307-674-0609

LOVELAND OFFICE
1635 Foxtrail Drive, Suite 204
Loveland, Colorado 80538
Phone 970-776-4331

DRAFTED BY:	LMO	CHECKED BY:	RKF	SHEET NO:
DATE DRAFTED:	9/19/17	DATE SURVEYED:	7/27/17	2
REVISED:		FILE NAME:	16-186	2 OF 3

T1N, R65W

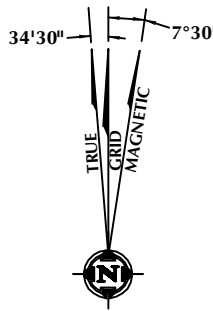


CERTIFICATE OF SURVEYOR:

THIS IS TO CERTIFY THAT THE ABOVE PLAT WAS PREPARED FROM FIELD NOTES OF ACTUAL SURVEYS MADE BY ME OR UNDER MY SUPERVISION AND THAT THE SAME ARE TRUE AND CORRECT TO THE BEST OF MY KNOWLEDGE AND BELIEF. THIS CERTIFICATE DOES NOT REPRESENT A LAND SURVEY PLAT OR IMPROVEMENT SURVEY PLAT AS DEFINED BY C.R.S. 38-5-102 AND CANNOT BE RELIED UPON TO DETERMINE OWNERSHIP.

Randall K. French
 RANDALL K. FRENCH
 PROFESSIONAL LAND SURVEYOR
 COLORADO REGISTRATION NUMBER 38512

NOTICE:
 ACCORDING TO COLORADO STATE LAW YOU MUST TAKE LEGAL ACTION BASED UPON ANY DEFECT IN THIS SURVEY WITHIN THREE YEARS AFTER YOU FIRST DISCOVER SUCH DEFECT. IN NO EVENT MAY ANY ACTION BASED UPON ANY DEFECT IN THIS SURVEY BE COMMENCED MORE THAN TEN YEARS FROM THE DATE ON THE CERTIFICATION SHOWN HEREON.



NOTE:
 MAGNETIC NORTH IS CURRENT AS OF 8/31/2017.
 MAGNETIC NORTH CHANGES WEST 0°06' PER YEAR.

WELL PAD - GEORGE 25-4HZ

GEORGE 25-4HZ
 WELL LOCATION CERTIFICATE
 2339' FNL & 2041' FEL SWNE (SURFACE)
 2615' FSL & 1' FEL NESE (HEEL)
 LOCATED IN SECTION 25
 T2N, R65W, 6TH P.M.
 333' FNL & 133' FEL LOT 1 (NENE) (BOTTOM)
 LOCATED IN SECTION 1
 T1N, R65W, 6TH P.M.
 WELD COUNTY, COLORADO

**Kerr-McGee Oil &
 Gas Onshore L.P.**
 1099 18th Street
 Denver, Colorado 80202



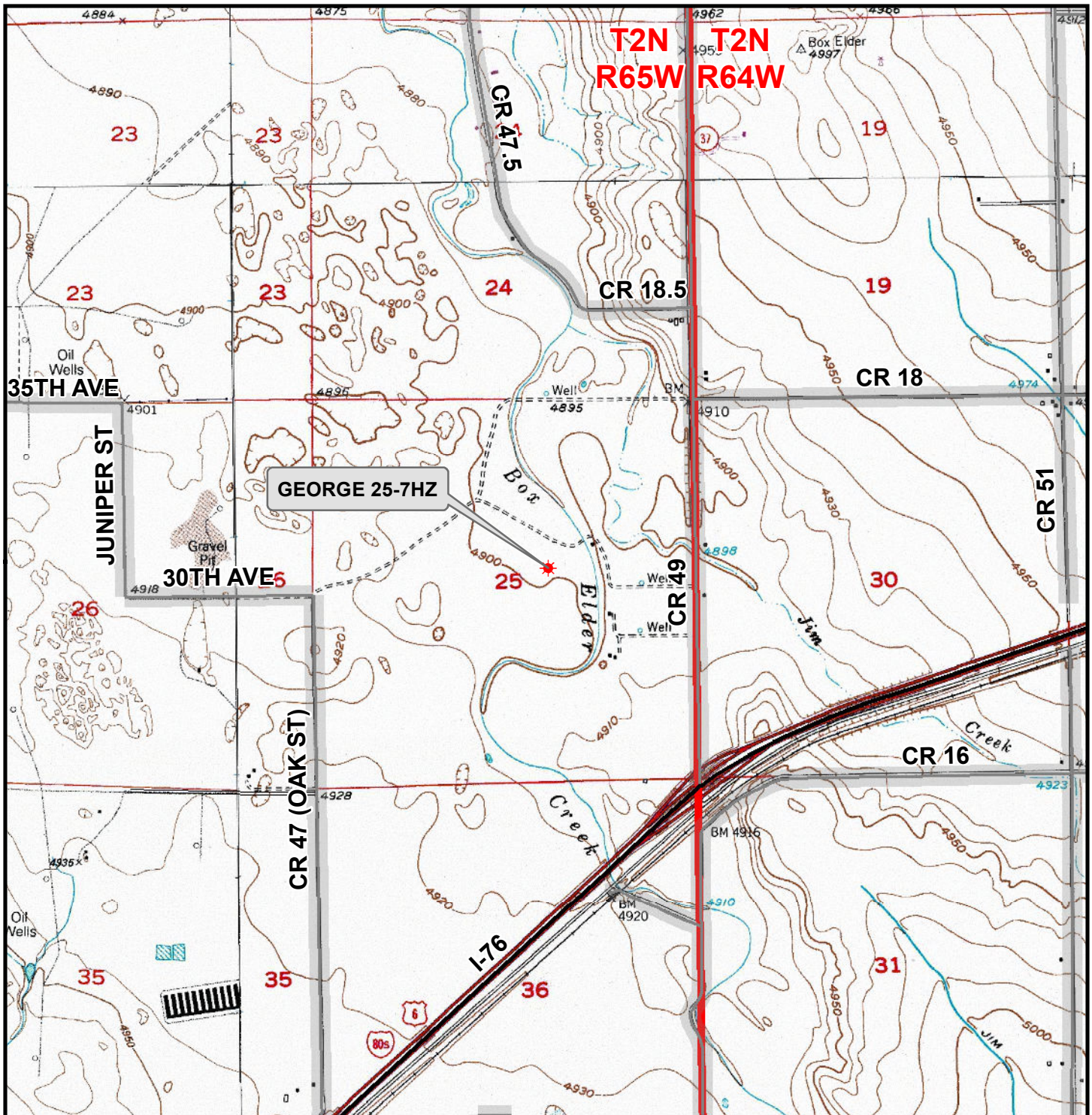
CONSULTING, LLC

SHERIDAN OFFICE
 1095 Saberton Avenue
 Sheridan, Wyoming 82801
 Phone 307-674-0609

LOVELAND OFFICE
 1635 Foxtrail Drive, Suite 204
 Loveland, Colorado 80538
 Phone 970-776-4331

DRAFTED BY:	LMO	CHECKED BY:	RKF	SHEET NO:
DATE DRAFTED:	9/19/17	DATE SURVEYED:	7/27/17	3
REVISED:		FILE NAME:	16-186	3 OF 3

K:\ANADARKO\2016\186_GEORGE_T2N_R65W_SEC_25\GIS\Maps_ABC\George 25-4HZ\George 25-7HZ.mxd 9/15/2017 9:11:00 AM



Legend

- ★ Well - Fee - Proposed --- Road - Primitive - Existing — Road - County - Existing
— Road - Improved - Existing — Road - Highway - Existing

WELL PAD - GEORGE 25-4HZ
GENERAL LOCATION MAP
GEORGE 25-7HZ
LOCATED IN SECTION 25
T2N, R65W, 6th P.M.
WELD COUNTY, COLORADO

**Kerr-McGee Oil &
Gas Onshore L.P.**

1099 18th Street
Denver, Colorado 80202



CONSULTING, LLC

SHERIDAN OFFICE
1095 Saberton Avenue
Sheridan, Wyoming 82801
Phone 307-674-0609

LOVELAND OFFICE
1635 Foxtail Drive, Suite 204
Loveland, Colorado 80538
Phone 970-776-4331



SCALE: 1" = 2,000ft

NAD83 CO-Nft

DRAWN: DP

DATE: 19 Sep 2017

REVISED:

DATE: