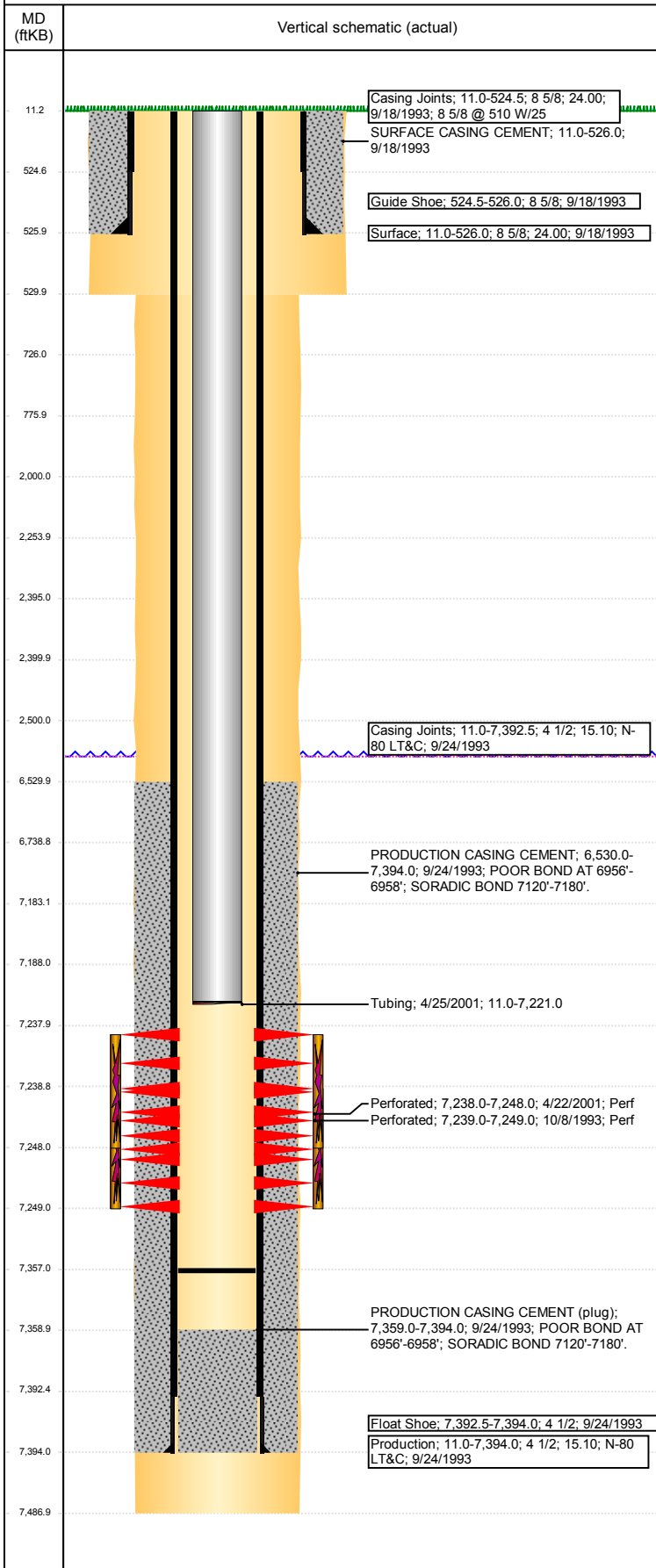


**Well Name: LUNDVALL 13-12**

VERTICAL - ORIGINAL HOLE, 12/6/2017 12:25:50 PM



## Well Header

API 05-123-17356	Business Unit DJ BASIN	District 15	Well Config VERTICAL
Original KB Elevation (ft) 4,863	KB - GL / MSL (ftKB) 11.00	Spud Date 9/17/1993	P & A Date
Comment			

## Directions To Well

## Congressional Location

Quarter 3 NW	Quarter 4 NE	Section 13	Township 5	Twntshp N/S Dir N	Range 67	Range E/W Dir W
-----------------	-----------------	---------------	---------------	----------------------	-------------	--------------------

## Bottom Hole Location

North-South Distance (ft)	From N or S Line	East-West Distance (ft)	From E or W Line
---------------------------	------------------	-------------------------	------------------

## Plug Back Total Depths

Date	Depth (ftKB)	Method	Com
9/24/1993	7,359.0	CASING TALLY	ORIGINAL PBTD, GUIDE SHOE
10/6/1993	7,358.0	CASED HOLE LOG	DEPTH LOGGER
4/24/2001	7,357.0	TAG	CLEANED OUT TO FILL

## Wellbore Sections

Section Des	Size (in)	Act Top, MD (ftKB)	Act Btm, MD (ftKB)
SURFACE	12 1/4	11	530
PRODUCTION	7 7/8	530	7,487

## Zone Statuses

Zone Name	Status Date	Status	Fluid Type	Job	Prod Method
CODELL	10/27/1993	PR	Water	DRILLING/CO...	Flowing
CODELL	4/26/2001	PR		RE-FRAC, 4/20...	
CODELL	9/10/2010	PR			
CODELL	1/19/2015	PR			

## Casing Strings

### Surface, 526.0ftKB

Casing Description	Run Date	OD (in)	Wt/Len (l...)	Grade	Top, MD (ft...)	MD (ftKB)
Surface	9/18/1993	8 5/8	24.00		11.0	526.0

### Production, 7,394.0ftKB

Casing Description	Run Date	OD (in)	Wt/Len (l...)	Grade	Top, MD (ft...)	MD (ftKB)
Production	9/24/1993	4 1/2	15.10	N-80 LT&C	11.0	7,394.0

## Cement

Description	Top Depth (ftKB)	Bottom Depth (ftKB)
SURFACE CASING CEMENT	11.0	526.0
PRODUCTION CASING CEMENT	6,530.0	7,394.0
Cement Plug	6,739.0	7,183.0
Cement Squeeze	2,000.0	2,500.0
Balance Plug	2,400.0	2,500.0
Cement Plug	2,254.0	2,395.0
Shoe Plug	726.0	776.0
Shoe Plug	11.0	726.0

## Tubing Strings

Tubing Description	Run Date	String...	ID (in)	Wt (lb/ft)	Grade	Len (ft)	Set De...
Tubing	4/25/2001	2 3/8	2.00	4.70		7,210.00	

## Tubing Components

Item Des	OD (in)	Wt (lb/ft)	Grade	Jts	Len (ft)	Btm (ftKB)	Btm (TVD) (ftKB)
Tubing	2 3/8	4.70		232	7,208.00	7,219.0	
Seat Nipple	2 3/8	4.70			1.00	7,220.0	
Mule Shoe	2 3/8	4.70			1.00	7,221.0	

## Other In Hole

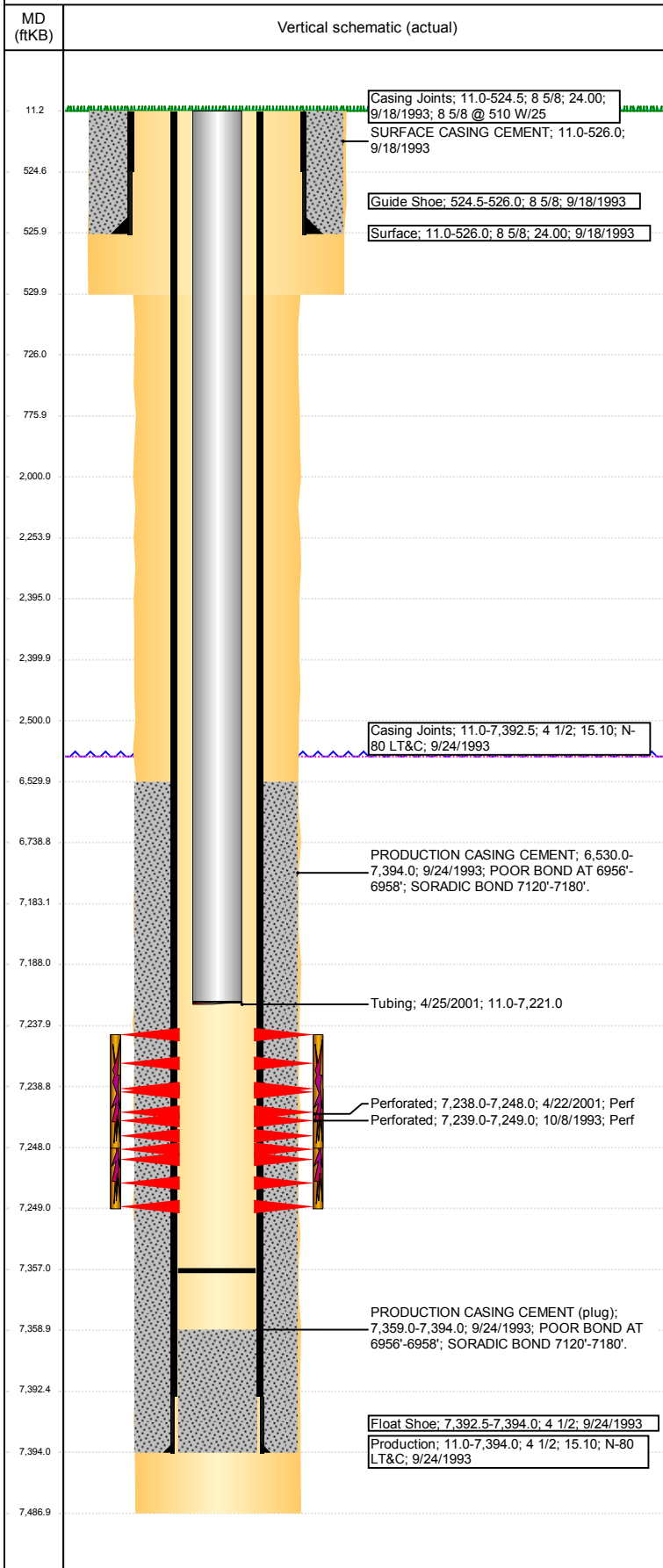
Run Date	Des	OD (in)	Top (ftKB)	Btm (ftKB)
12/4/2017	Cement Retainer	3.826	2,395.0	2,400.0
12/4/2017	Cast Iron Bridge Plug	3.826	7,183.0	7,188.0

## Logs

Date	Type	Top, MD (ftKB)	Btm, MD (ftKB)
9/23/1993	COMPENSATED DENSITY	500.0	7,500.0

**Well Name: LUNDVALL 13-12**

VERTICAL - ORIGINAL HOLE, 12/6/2017 12:25:50 PM



Logs			
Date	Type	Top, MD (ftKB)	Btm, MD (ftKB)
9/23/1993	INDUCTION	500.0	7,500.0
10/6/1993	CBL/CCL/GR	6,320.0	7,350.0
7/6/2017	GYRO	0.0	7,150.0

Perforation Data					
Linked Zone	Bnch/St g	Sum of Entered Shot Total	Top (ftKB)	Btm (ftKB)	Date
		0	2,500.00	2,500.00	12/4/2017
CODELL, ORIGINAL HOLE		40	7,238.00	7,248.00	4/22/2001
CODELL, ORIGINAL HOLE		40	7,239.00	7,249.00	10/8/1993
<b>Total (Sum)</b>		<b>80</b>			

Stimulation Intervals		
Start Date	Primary Job Type	
10/20/1993	DRILLING/COMPLETION - ORIGINAL	
Technical Result	Tech Result Details	Tech Result Note
Comment		
Start Date	Primary Job Type	
4/24/2001	RE-FRAC	
Technical Result	Tech Result Details	Tech Result Note
Comment		