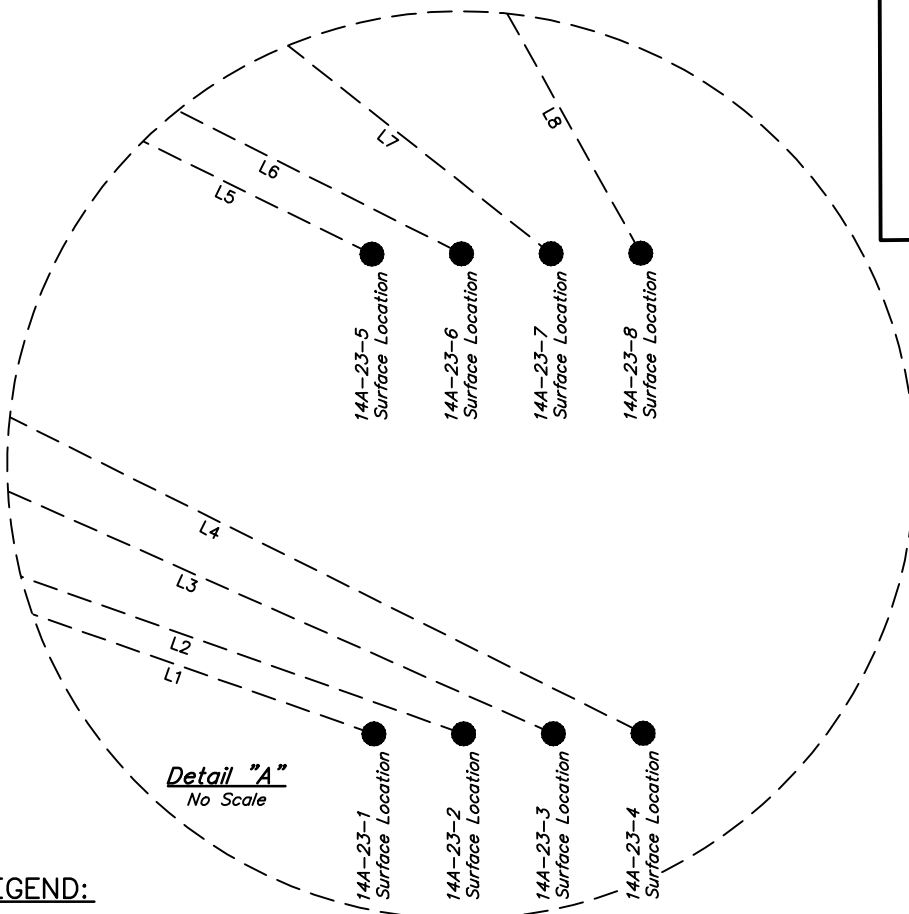
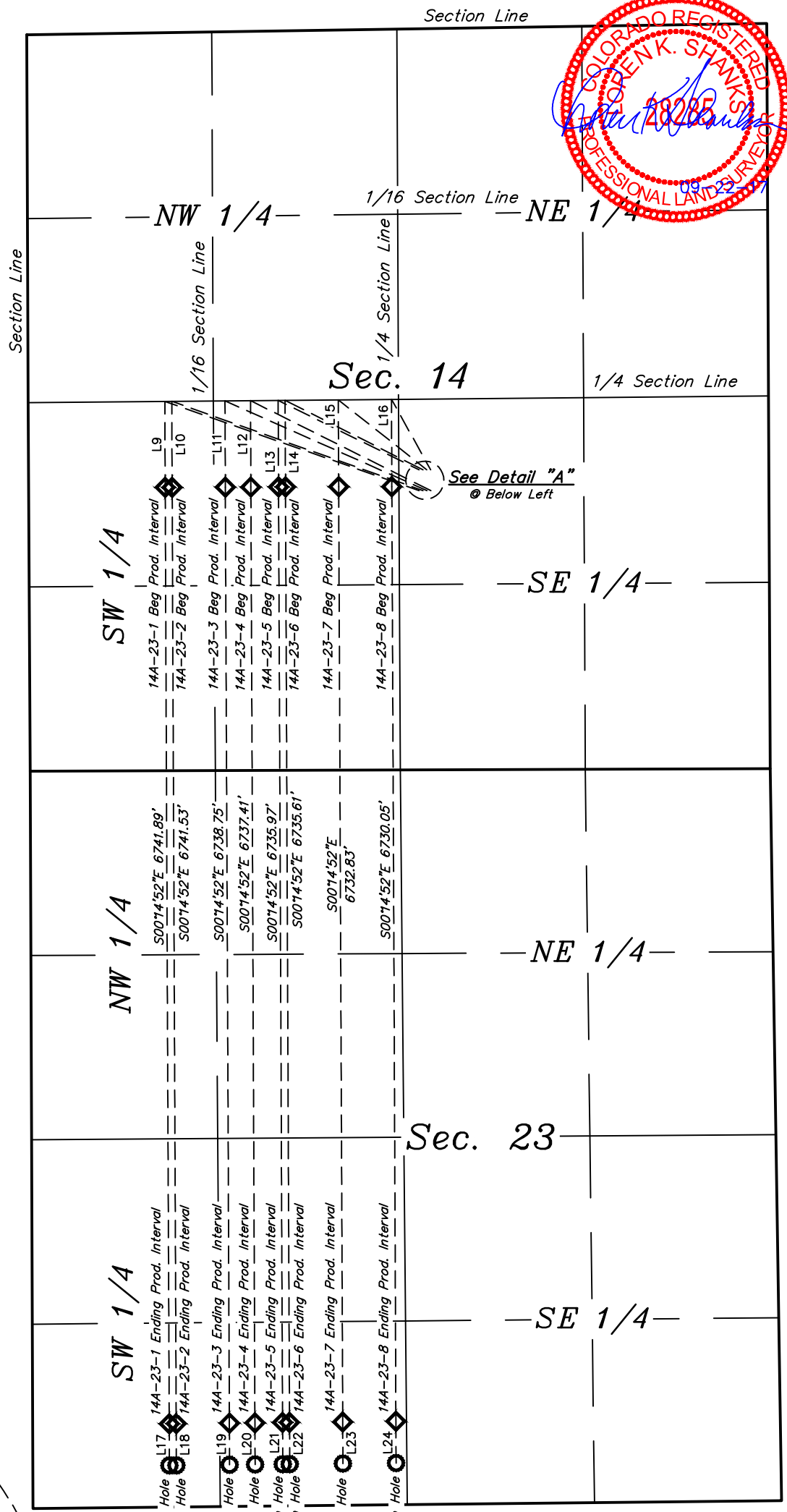




LINE TABLE		
LINE	DIRECTION	LENGTH
L1	N70°39'46"W	1940.31'
L2	N70°26'01"W	1919.73'
L3	N66°02'09"W	1591.08'
L4	N63°28'43"W	1450.65'
L5	N63°46'02"W	1130.69'
L6	N63°15'04"W	1111.11'
L7	N51°41'17"W	812.14'
L8	N29°07'03"W	580.05'
L9	S00°14'52"E	618.46'
L10	S00°14'52"E	618.75'
L11	S00°14'52"E	620.90'
L12	S00°14'52"E	621.94'
L13	S00°14'52"E	623.06'
L14	S00°14'52"E	623.34'
L15	S00°14'52"E	625.50'
L16	S00°14'52"E	627.66'
L17	S00°14'52"E	300.01'
L18	S00°14'52"E	300.01'
L19	S00°14'52"E	300.01'
L20	S00°14'52"E	300.01'
L21	S00°14'52"E	300.01'
L22	S00°14'52"E	300.01'
L23	S00°14'52"E	300.01'
L24	S00°14'52"E	300.01'



- LEGEND:**
- = PROPOSED WELLHEAD.
  - ◇ = PRODUCTION INTERVAL.
  - = TARGET BOTTOM HOLE.

**NOTES:**

**BISON OIL & GAS II**  
**ROHN 9-60 14A PAD**  
 NW 1/4 SE 1/4, SECTION 14, T9N, R60W, 6th P.M.  
 WELD COUNTY, COLORADO

<b>SURVEYED BY</b>	JAMES FRESHWATER, G.B.	09-14-17	<b>SCALE</b>
<b>DRAWN BY</b>	J.J.	09-19-17	1" = 1000'
<b>MULTI-Well PLAN</b>		<b>FIGURE #5</b>	



**UELS, LLC**  
 Corporate Office \* 85 South 200 East  
 Vernal, UT 84078 \* (435) 789-1017